

APB 20-015-36844

DEC 19 2008

District I  
1625 N. French Dr., Hobbs, NM 88240  
District II  
1301 W. Grand Avenue, Artesia, NM 88210  
District III  
1000 Rio Brazos Rd., Aztec, NM 87410  
District IV  
1220 S. St. Francis Dr., Santa Fe, NM 87505

State of New Mexico  
Energy, Minerals & Natural Resources Department  
OIL CONSERVATION DIVISION  
1220 South St. Francis Dr.  
Santa Fe, NM 87505

OCD-ARTESIA

Form C-102

Revised October 12, 2005

Submit to Appropriate District Office

State Lease- 4 Copies

Fee Lease- 3 Copies

☐ AMENDED REPORT

## WELL LOCATION AND ACREAGE DEDICATION PLAT

API Number	Pool Code 96070	Pool Name UC; Morrow Gas
Property Code	Property Name EASTON 10 STATE COM	Well Number 2
OGRID No. 7377	Operator Name EOG RESOURCES, INC.	Elevation 3195.3'

## Surface Location

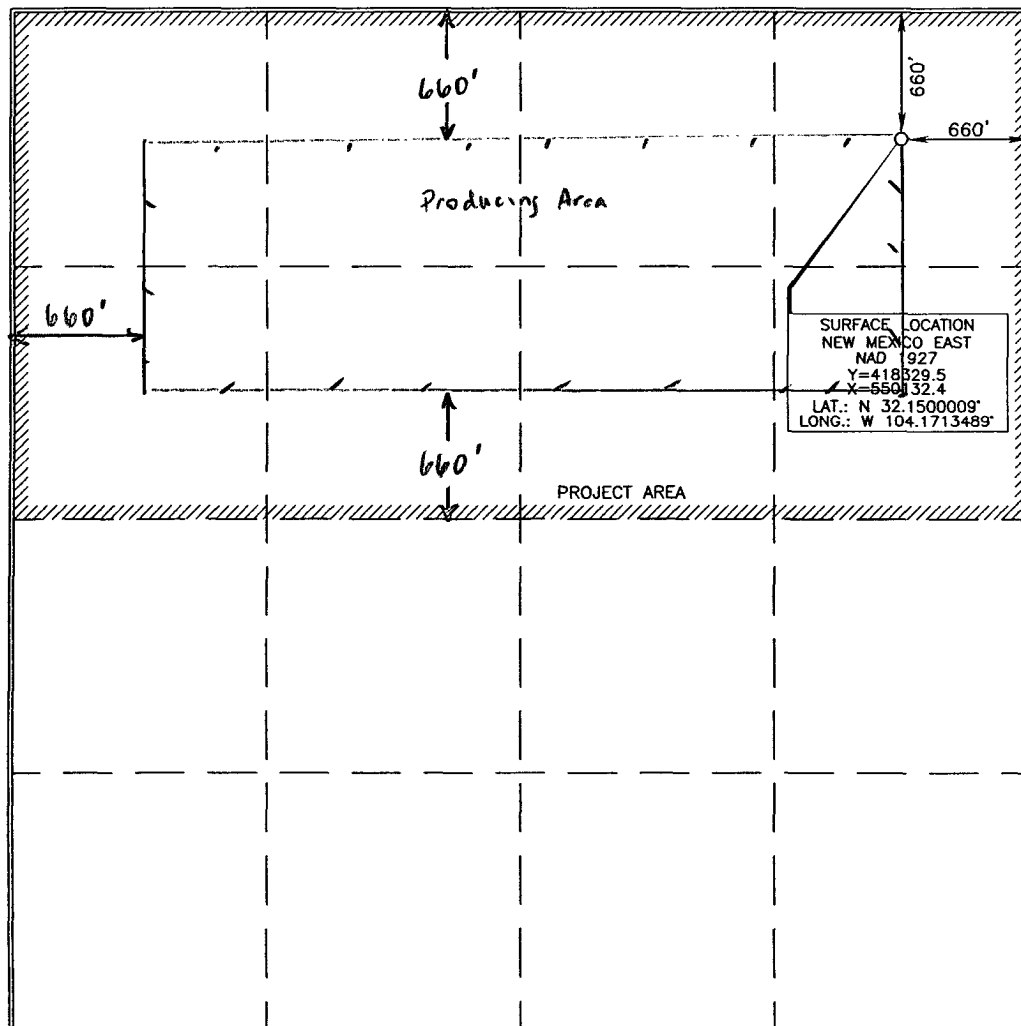
UL or lot no.	Section	Township	Range	Lot Idn	Feet from the	North/South line	Feet from the	East/West line	County
A	10	25 SOUTH	27 EAST, N.M.P.M.		660	NORTH	660	EAST	EDDY

## Bottom Hole Location If Different From Surface

UL or lot no.	Section	Township	Range	Lot Idn	Feet from the	North/South line	Feet from the	East/West line	County

Dedicated Acres 3.20	Joint or Infill	Consolidation Code	Order No.
-------------------------	-----------------	--------------------	-----------

No allowable will be assigned to this completion until all interests have been consolidated or a non-standard unit has been approved by the division.



## OPERATOR CERTIFICATION

I hereby certify that the information contained herein is true and complete to the best of my knowledge and belief, and that this organization either owns a working interest or unleased mineral interest in the land including the proposed bottom hole location or has a right to drill this well at this location pursuant to a contract with an owner of such a mineral or working interest, or to a voluntary pooling agreement or a compulsory pooling order heretofore entered by the division.

*Don D. Mott* 12/17/08  
Signature Date

Donny G. Glantz  
Printed Name

## SURVEYOR CERTIFICATION

I hereby certify that the well location shown on this plat was plotted from field notes or actual surveys made by me or under my supervision, and that the same is true and correct to the best of my belief.

NOVEMBER 11, 2008  
Date of Survey

Signature and Seal of  
Professional Surveyor

*Terry J. Abel* 12/18/2008  
Certificate Number 15079

WO# 081001WL-d(KA)

**Permit Information:**

Well Name: Easton 10 State Com #2

Location:

SL 660' FNL & 660' FEL, Section 10, T-25-S, R-27-E, Eddy Co., N.M.  
 BHL Same

**Casing Program:**

Casing	Setting Depth	Hole Size	Casing Size	Casing Weight	Casing Grade	Desired TOC
Surface	450'	17-1/2"	13-3/8"	48#	H-40	Surface
1 <sup>st</sup> Intermediate	2,300'	12-1/4"	9-5/8"	40#	J-55	Surface
2 <sup>nd</sup> Intermediate	9,500'	8-3/4"	7"	26#	HCP-110	1,900'
Production Liner	12,600'	6-1/8"	4-1/2"	11.6#	HCP-110	9,300' TOL

**Cement Program:**

Depth	No. Sacks	Slurries:
<b>450'</b>	500	Premium Plus C + 0.005 pps Static Free + 2% CaCl <sub>2</sub> + 0.25 pps CelloFlake + 0.005 gps FP-6L
<b>2,300'</b>	400	Lead: 50:50 Poz C + 0.005 pps Static Free + 5% NaCl + 0.25 pps CelloFlake + 5 pps LCM-1 + 0.005 gps FP-6L + 10% Bentonite
	200	Tail: Premium Plus C + 0.005 pps Static Free + 2% CaCl <sub>2</sub> + 0.25 pps CelloFlake + 0.005 gps FP-6L
<b>9,500'</b> <i>Stage 1</i>	175	Lead: 35:65 Poz H + 0.005 pps Static Free + 5% NaCl + 0.125 pps CelloFlake + 0.1% FL-52A + 0.005 gps FP-6L + 6% Bentonite + 0.1% ASA-301 + 0.1% SMS + 1% FL-62A
	465	Tail: 50:50 Poz H + 2% Bentonite + 0.005 gps FP-6L + 0.005 pps Static Free + 5% NaCl + 0.1% R-3 + 0.2% CD-32 + 0.3% FL-52A
<i>Stage 2</i>	435	Lead: 50:50 Poz C + 0.005 pps Static Free + 5% NaCl + 0.25 pps CelloFlake + 5 pps LCM-1 + 0.005 gps FP-6L + 10% Bentonite
	100	Tail: Class H + 0.005 pps Static Free + 0.005 gps FP-6L
<b>12,600'</b>	410	Premium Plus H + 0.005 gps FP-6L + 0.4% BA-10A + 0.005 pps Static Free + 0.4% R-3 + 0.3% CD-32 + 1% FL-62 + 0.1% ASA-301 + 0.1% SMS

**Mud Program:**

Depth	Type	Weight (ppg)	Viscosity	Water Loss
0 – 450'	Fresh - Gel	8.6-8.8	28-34	N/c
450' – 2,300'	Brine	10.0-10.2	28-34	N/c
2,300' – 9,500'	Fresh Water	8.4 – 8.6	28-34	N/c
9,500' – 11,100'	Cut Brine	8.8-9.6	28-34	N/c
11,100' – 12,600'	Cut Brine/ Polymer	8.8-10.6	30-40	10-15



**EOG Resources, Inc.**  
P.O. Box 2267  
Midland, TX 79702  
(432) 686-3600

December 15, 2008

State of New Mexico Energy, Minerals and Natural Resources  
Oil Conservation Division  
1220 South St. Francis Dr.  
Santa Fe, NM 87505

To Whom It May Concern:

I am writing to request a waiver for the inclusion of an H<sub>2</sub>S Contingency Plan for the Easton 10 State Com #2. The current plan is to complete this well in the Atoka/ Morrow, which is sweet, and I do not anticipate encountering any H<sub>2</sub>S bearing formations during drilling operations.

Sincerely,

A handwritten signature in black ink, appearing to read "Jason LaGrega", written over a horizontal line.

Jason LaGrega  
Drilling Engineer