

DEC 09 2008

OCD-ARTESIA Form C-102

District I
1625 N. French Dr., Hobbs, NM 88240
District II
1301 W. Grand Avenue, Artesia, NM 88210
District III
1000 Rio Brazos Rd., Aztec, NM 87410
District IV
1220 S. St. Francis Dr., Santa Fe, NM 87505

State of New Mexico
Energy, Minerals & Natural Resources Department
OIL CONSERVATION DIVISION
1220 South St. Francis Dr.
Santa Fe, NM 87505

Revised October 12, 2005
Submit to Appropriate District Office
State Lease- 4 Copies
Fee Lease- 3 Copies

☐ AMENDED REPORT

WELL LOCATION AND ACREAGE DEDICATION PLAT

API Number 30-015-20590	Pool Code 97415	Pool Name Four Mile Draw; Wolfcamp (G)
Property Code 337433	Property Name BOW FED. COM	Well Number 1H
OGRID No. 7377	Operator Name EOG RESOURCES, INC.	Elevation 3943.7'

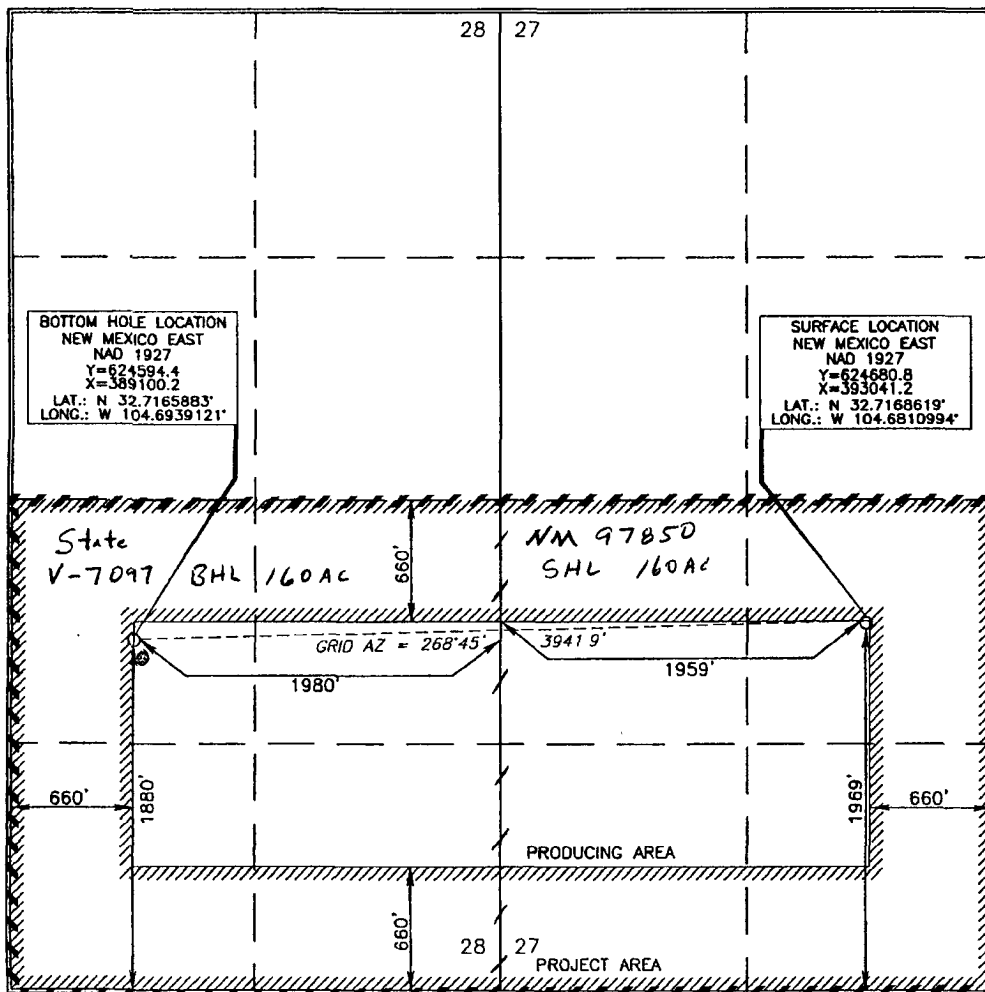
Surface Location

UL or lot no.	Section	Township	Range	Lot Idn	Feet from the	North/South line	Feet from the	East/West line	County
K	27	18 SOUTH	23 EAST, N.M.P.M.		1969	SOUTH	1959	WEST	EDDY

Bottom Hole Location If Different From Surface

UL or lot no.	Section	Township	Range	Lot Idn	Feet from the	North/South line	Feet from the	East/West line	County
J	28	18 SOUTH	23 EAST, N.M.P.M.		1750	SOUTH	1895	EAST	EDDY
Dedicated Acres 320		Joint or Infill	Consolidation Code	Order No.					

No allowable will be assigned to this completion until all interests have been consolidated or a non-standard unit has been approved by the division.



OPERATOR CERTIFICATION

I hereby certify that the information contained herein is true and complete to the best of my knowledge and belief, and that this organization either owns a working interest or unleased mineral interest in the land including the proposed bottom hole location or has a right to drill this well at this location pursuant to a contract with an owner of such a mineral or working interest, or to a voluntary pooling agreement or a compulsory pooling order heretofore entered by the division.

Don D. Muth 9/8/08
Signature Date

Don D. Muth Danny G Glatton
Printed Name

SURVEYOR CERTIFICATION

I hereby certify that the well location shown on this plat was plotted from field notes of actual survey made by me or under my supervision and that the same is true and correct to the best of my belief.

AUGUST 29, 2008
Date of Survey

Sunny D. Abel
Signature and Seal of Professional Surveyor

9/8/2008
Certificate Number 15079

WO# 080829WL(KA)