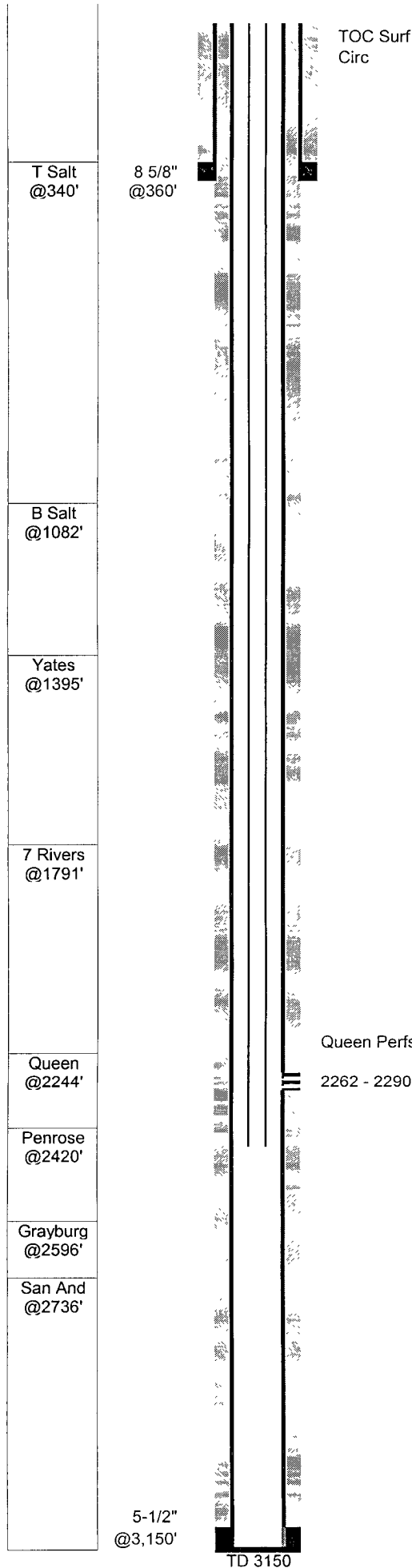


APPROVED BY: _____ TITLE _____ DATE _____
 Conditions of Approval (if any): _____



EQU #21 (P.J. State A #16)							
GL:	3,364	Status:	Active pumping				
KB:	3,373	Perfs:	Queen 2262 - 2290				
TD:	3,150	API:	30-015-26104				
PBD:	3,100	NM Lse:	B-7717				
Fr. Wtr:		Field:	Turkey Track (Sr-Qn-Gb-Sa)				
Legal:	990 from S 990 from E	Logs:	CNL, FDC, DLL, RXO				
Section:	2-P	Archeological:					
Township:	19S						
Range:	29E						
County:	Eddy						

Casing	Wt	Type	Set	Cmt	Hole	TOC	Method
8-5/8"	24.00	J55	360	300	12-1/4"	Surf	did not circ RM?
5-1/2"	15.50	J55 used	3,150	600	7-7/8"	Surf	Circ 109 sx

25-Apr-89 Spud well
Fred Pool - P.J. State A #16

8-May-89 **Queen Completion**
Perf 2262-2290 1 SPF 29 holes 0.41"
acidized w/500 gal 15% HCL
frac w/40Mgal gel wtr, 30M# 20/40, 54M# 12/20

17-Sep-08 **Recondition to Queen flood producer**
Pulled rods, pump and tbg. Ran bit and scraper to 2538'.
Ran production tubing, rods and pump

TUBING STRING 9/17/08

# OF JTS	DESCRIPTION	LENGTH	FROM	TO
	Distance from KB to top of pipe	9.00	0.00	9.00
76	2-3/8 J-55 4.7# Tbg	2343.84	9.00	2352.84
1	2-3/8 X 1-25/32 SN	1.10	2352.84	2353.94
1	2 3/8" 3' perf sub	3.00	2353.94	2356.94
1	2 3/8" bull plugged mud joint	30.84	2356.94	2387.78

ROD STRING 9/17/08

# OF JTS	SIZE	TYPE OF RODS	LENGTH
1	1-1/4	Polished Rod	16
3	3/4	Pony Rods 6,6,4	16
92	3/4	Rods	2300
1	3/4	Pony Rods 2	2
1	2x1.5x12'	RWTC pump w/1"x6' GA	12
			2346