

District I  
1625 N. French Dr., Hobbs, NM 88240  
District II  
1301 W. Grand Avenue, Artesia, NM 88210  
District III  
1000 Rio Brazos Road, Aztec, NM 87410  
District IV  
1220 S. St. Francis Dr., Santa Fe, NM 87505

State of New Mexico  
Energy Minerals and Natural Resources

Form C-101  
June 16, 2008

LM

Oil Conservation Division  
1220 South St. Francis Dr.  
Santa Fe, NM 87505

MAR 31 2009

Submit to appropriate District Office

☐ AMENDED REPORT

APPLICATION FOR PERMIT TO DRILL, RE-ENTER, DEEPEN, PLUGBACK, OR ADD A ZONE

<sup>1</sup> Operator Name and Address PURE ENERGY OPERATING, INC. 153 TREELINE PARK SUITE 220 SAN ANTONIO, TEXAS 78209		<sup>2</sup> OGRID Number 236435 <sup>3</sup> API Number 30-013-20009
<sup>4</sup> Property Code 37642	<sup>5</sup> Property Name OLE	<sup>6</sup> Well No. 1
<sup>7</sup> Proposed Pool 1 STRATIGRAPHIC TEST (CORE)		<sup>8</sup> Proposed Pool 2

<sup>7</sup> Surface Location

UL or lot no.	Section	Township	Range	Lot Idn	Feet from the	North/South line	Feet from the	East/West line	County
0	18	23S	3E		1063'	SOUTH	1369'	EAST	DONA ANA

<sup>8</sup> Proposed Bottom Hole Location If Different From Surface

UL or lot no.	Section	Township	Range	Lot Idn	Feet from the	North/South line	Feet from the	East/West line	County

Additional Well Information

<sup>11</sup> Work Type Code N	<sup>12</sup> Well Type Code CORE HOLE.	<sup>13</sup> Cable/Rotary ROTARY	<sup>14</sup> Lease Type Code P	<sup>15</sup> Ground Level Elevation 4464'
<sup>16</sup> Multiple NO	<sup>17</sup> Proposed Depth 4000'	<sup>18</sup> Formation FUSSELMAN	<sup>19</sup> Contractor STEWART BROS	<sup>20</sup> Spud Date WHEN APPROVED

Per Joe Janica 4/1/09  
<sup>21</sup> Proposed Casing and Cement Program

Hole Size	Casing Size	Casing weight/foot	Setting Depth	Sacks of Cement	Estimated TOC
8 3/4" 9 1/8"	7"	23#	500'	275 Sx.	Surface.
6 1/8"	-----	-----	-----		

<sup>22</sup> Describe the proposed program. If this application is to DEEPEN or PLUG BACK, give the data on the present productive zone and proposed new productive zone. Describe the blowout prevention program, if any. Use additional sheets if necessary.

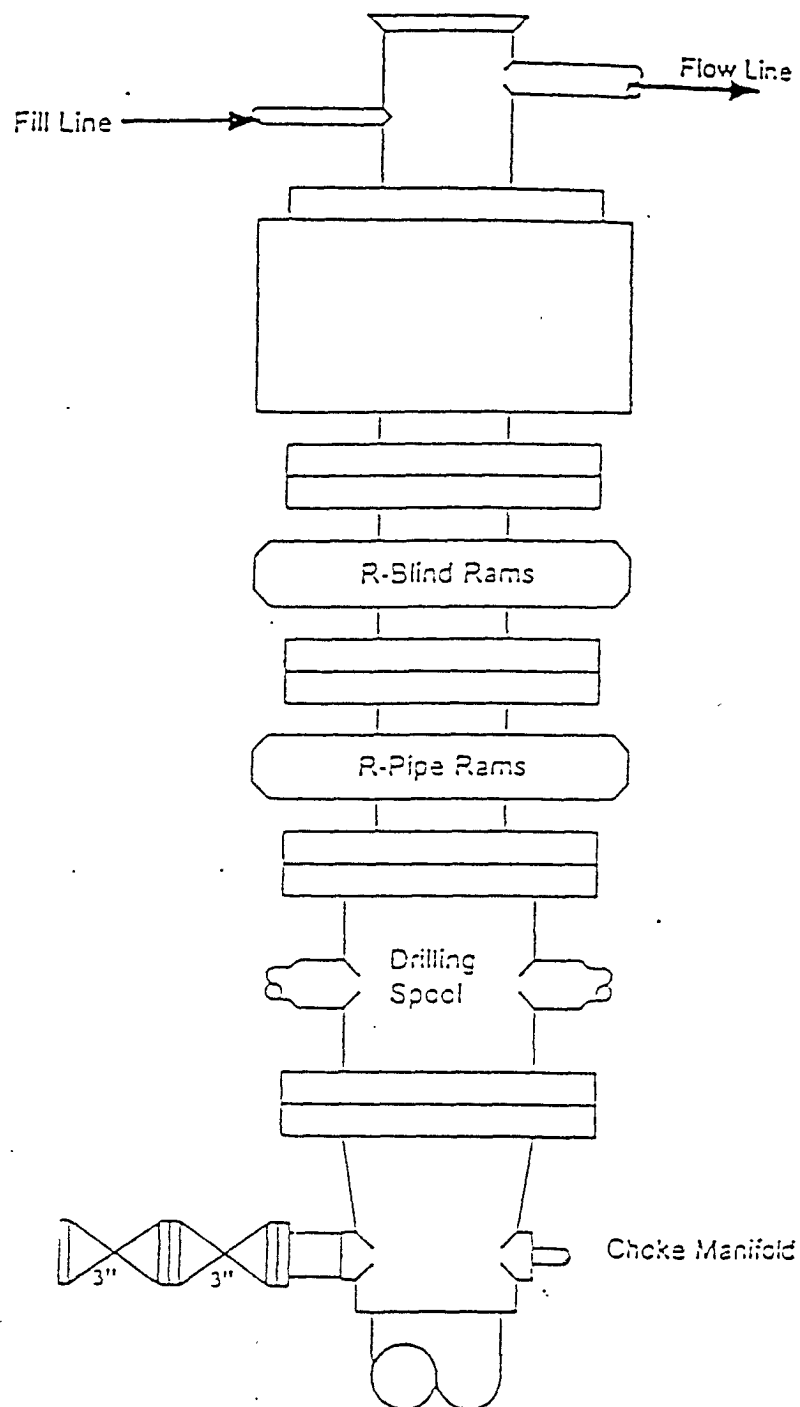
SEE ATTACHED SHEET FOR DETAIL

\* Hole can't be used for hydrocarbon production.

<sup>23</sup> I hereby certify that the information given above is true and complete to the best of my knowledge and belief.		OIL CONSERVATION DIVISION	
Signature: Joe T. Janica		Approved by: Jacqui R...	
Printed name: Joe T. Janica		Title: Geologist	
Title: Permit Eng.		Approval Date: 4/3/2009 Expiration Date: 4/3/2011	
E-mail Address: joejanica@valornet.com			
Date: 03/03/09	Phone: 575-391-8503	Conditions of Approval Attached <input checked="" type="checkbox"/> Described Above	

1. Move in drilling rig and rig up.
2. Drill ~~8 3/4"~~ <sup>nr 9 7/8"</sup> hole to 500'. Run and set 500' of 7" 23# J-55 ST&C casing. Cement with 275 Sx. of Class "C" cement + 2% CaCl, + 1/4# Flocele/Sx, Yield 1.3, circulate cement to surface.
3. Drill 6 1/8" hole to 2800'. Pull out of hole with drilling assembly and lay down same.
4. Pick up core barrel and go in hole to 2800'. Core interval from 2800' to 2920.
5. Lay down core barrel and if necessary pick up reamer and go in hole and ream to 2920', pull out of hole with reamer and lay down same.
6. Pick up drilling assembly and 6 1/8" bit and drill hole to a total depth of 4000'. Pull out of hole with drilling assembly.
7. Rig up open hole loggers and logwell from total depth back to surface. Rig up cementers and set cement plugs pre OIL CONSERVATION DIVISION approval, prep to abandon well bore.
8. Rig down drilling contractor and move out. Clean location to the satisfaction of the surface owner and the OIL CONSERVATION DIVISION. Abandone location.

This core hole will be drilled with fresh water and a closed mud system.



Type 900 Series  
3000 psi WP

DISTRICT I  
1626 N. FRENCH DR., UDOOS, NM 88240

DISTRICT II  
1301 W. GRAND AVENUE, ARTESIA, NM 88210

DISTRICT III  
1000 Rio Brazos Rd., Aztec, NM 87410

DISTRICT IV  
1220 S. ST. FRANCIS DR., SANTA FE, NM 87505

State of New Mexico  
Energy, Minerals and Natural Resources Department

OIL CONSERVATION DIVISION  
1220 SOUTH ST. FRANCIS DR.  
Santa Fe, New Mexico 87505

Form C-102  
Revised October 12, 2002  
Submit to Appropriate District Office  
State Lease - 4 Copies  
Fee Lease - 3 Copies

WELL LOCATION AND ACREAGE DEDICATION PLAT

☐ AMENDED REPORT

API Number <b>30-013-20009</b>	Pool Code	Pool Name <b>STRATIGRAPHIC TEST</b>
Property Code <b>37642</b>	Property Name <b>OLE</b>	Well Number <b>1</b>
OGRID No. <b>236435</b>	Operator Name <b>PURE ENERGY OPERATING, INC.</b>	Elevation <b>4464' GL</b>

Surface Location

UL or lot No.	Section	Township	Range	Lot Idn	Feet from the	North/South line	Feet from the	East/West line	County
<b>0</b>	<b>18</b>	<b>23S</b>	<b>3E</b>		<b>1063'</b>	<b>SOUTH</b>	<b>1369'</b>	<b>EAST</b>	<b>DONA</b>

Bottom Hole Location If Different From Surface

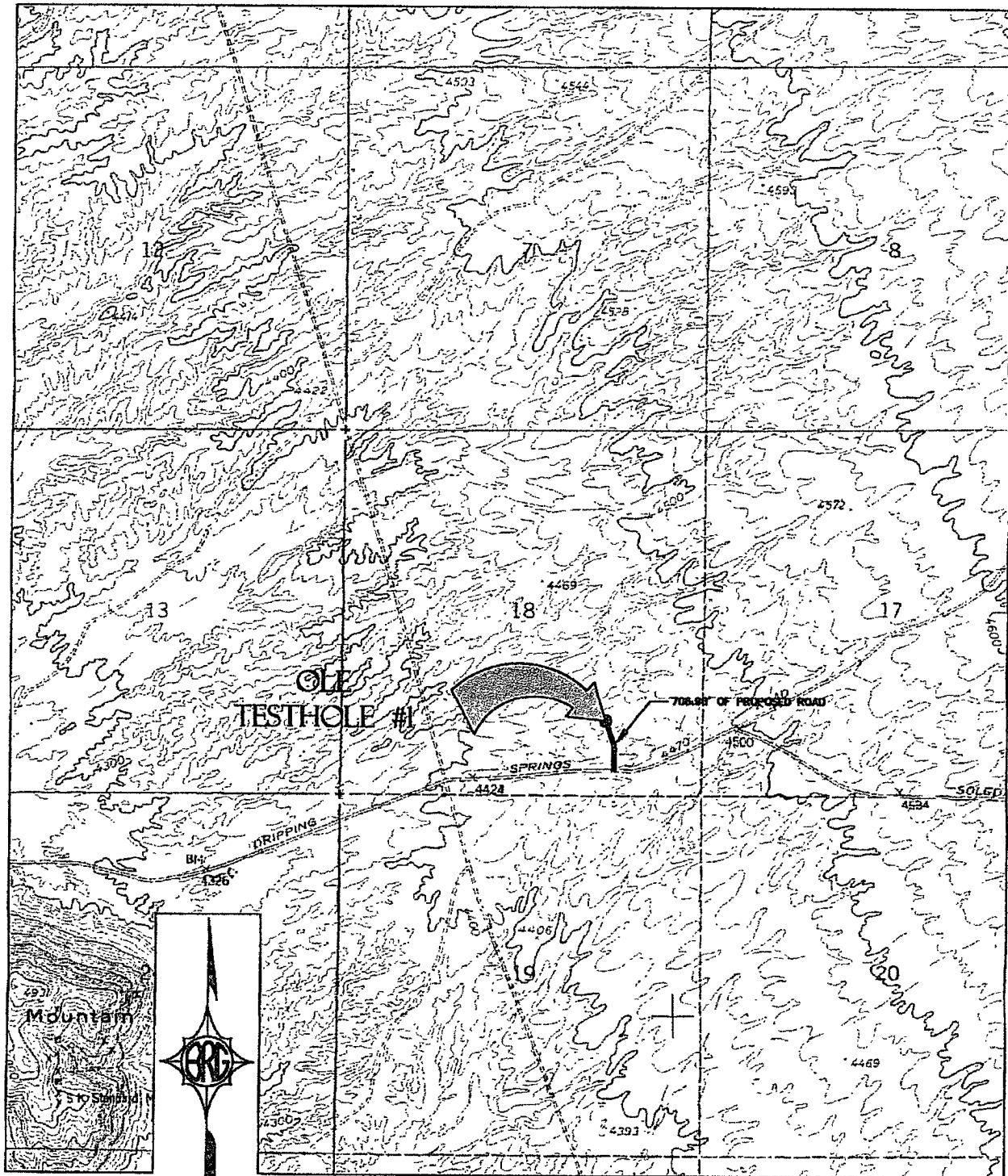
UL or lot No.	Section	Township	Range	Lot Idn	Feet from the	North/South line	Feet from the	East/West line	County

Dedicated Acres	Joint or Infill	Consolidation Code	Order No.
<b>40</b>			

NO ALLOWABLE WILL BE ASSIGNED TO THIS COMPLETION UNTIL ALL INTERESTS HAVE BEEN CONSOLIDATED  
OR A NON-STANDARD UNIT HAS BEEN APPROVED BY THE DIVISION

<div>STATE PLANE COORDINATES NAD 27 NEW MEXICO CENTRAL N=474420.06' (Y) E=370299.06' (X) ELEVATION= 4464.47' (NAVD 88) LAT.=32°18'13.33758" N LONG.=106°40'13.23784" W</div>	<div>SITE LOCATION</div>	<div>OPERATOR CERTIFICATION</div> <p>I hereby certify that the information herein is true and complete to the best of my knowledge and belief, and that this organization either owns a working interest or unleased mineral interest in the land including the proposed bottom hole location or has a right to drill this well at this location pursuant to a contract with an owner of such mineral or working interest, or to a voluntary pooling agreement or a compulsory pooling order heretofore entered by the division.</p> <p><i>Joe T. Janica</i> Signature Date <b>Joe T. Janica</b> <b>03/30/09</b> Printed Name</p>
		<div>SURVEYOR CERTIFICATION</div> <p>I hereby certify that the well location shown on this plat was plotted from field notes of actual surveys made by me or under my supervision, and that the same is true and correct to the best of my belief.</p> <p><b>3-27-09</b> <b>W. GREINER</b> Date Surveyed Signature of Surveyor Professional Surveyor <b>NEW MEXICO</b> <b>REGISTERED</b> <b>PROFESSIONAL LAND SURVEYOR</b> <b>9761</b></p> <p>Certificate No. <b>NM 9761</b></p>

# LOCATION VERIFICATION MAP



U.S.G.S. TOPOGRAPHIC MAP - TORTUGAS MOUNTAIN, NM  
CONTOUR INTERVAL = 10 FEET



**BRG** BLACKHAM, ROMAN, GREINER  
AND ASSOCIATES, INC.  
ENGINEERING · PLANNING · SURVEYING  
1203 MEDPARK DR. - LAS CRUCES, NM 88005 - (575) 525-2278 - (575) 523-9518 (FAX)  
PROJECT: 09-13