

MAY - 1 2009

State of New Mexico  
Energy Minerals and Natural Resources

District I  
1625 N. French Dr., Hobbs, NM 88240  
District II  
1301 W. Grand Avenue, Artesia, NM 88210  
District III  
1000 Rio Brazos Road, Aztec, NM 87410  
District IV  
1220 S. St. Francis Dr., Santa Fe, NM 87505

Oil Conservation Division  
1220 South St. Francis Dr.  
Santa Fe, NM 87505

Submit to appropriate District Office

☐ AMENDED REPORT

**APPLICATION FOR PERMIT TO DRILL, RE-ENTER, DEEPEN,  
PLUGBACK, OR ADD A ZONE**

|   |  |  |
|---|--|--|
| <sup>1</sup> Operator Name and Address<br>Lime Rock Resources A, L.P.<br>1111 Bagby St. Suite 4600<br>Houston, TX 77002 |  | <sup>2</sup> OGRID Number<br>255333        |
| <sup>3</sup> Property Code<br>305451  |  | <sup>4</sup> Property Name<br>STALEY STATE |
| <sup>5</sup> Proposed Pool 1<br>Red Lake; Glorieta-Yeso-NE (96836)  |  | <sup>6</sup> Well No<br>6                  |
| <sup>7</sup> Surface Location   |  | <sup>8</sup> Proposed Pool 2               |

| UL or lot no | Section | Township | Range | Lot Idn | Feet from the<br>1960 | North/South line<br>South | Feet from the<br>990 | East/West line<br>West | County<br>Eddy |
|--------------|---------|----------|-------|---------|-----------------------|---------------------------|----------------------|------------------------|----------------|
| 3            | 30      | 17-S     | 28-E  |         |                       |                           |                      |                        |                |

| UL or lot no | Section | Township | Range | Lot Idn | Feet from the | North/South line | Feet from the | East/West line | County |
|--------------|---------|----------|-------|---------|---------------|------------------|---------------|----------------|--------|
|              |         |          |       |         |               |                  |               |                |        |

**Additional Well Information**

|                                   |                                       |                                      |   |   |
|-----------------------------------|---------------------------------------|--------------------------------------|---|---|
| <sup>11</sup> Work Type Code<br>N | <sup>12</sup> Well Type Code<br>O     | <sup>13</sup> Cable/Rotary<br>Rotary | <sup>14</sup> Lease Type Code<br>S          | <sup>15</sup> Ground Level Elevation<br>3593' |
| <sup>16</sup> Multiple<br>N       | <sup>17</sup> Proposed Depth<br>4000' | <sup>18</sup> Formation<br>Yeso      | <sup>19</sup> Contractor<br>United Drilling | <sup>20</sup> Spud Date<br>6/15/09            |

**<sup>21</sup> Proposed Casing and Cement Program**

| Hole Size | Casing Size | Casing weight/foot | Setting Depth | Sacks of Cement    | Estimated TOC |
|-----------|-------------|--------------------|---------------|--------------------|---------------|
| 12 1/4"   | 8 5/8"      | 24#                | 420'          | 350 sx "C"+ add    | Surface       |
| 7 7/8"    | 5 1/2"      | 14#                | 4,000'        | 350 Poz + 400 Lite | Surface       |
|           |             |                    |               |                    |               |
|           |             |                    |               |                    |               |

<sup>22</sup> Describe the proposed program. If this application is to DEEPEN or PLUG BACK, give the data on the present productive zone and proposed new productive zone. Describe the blowout prevention program, if any. Use additional sheets if necessary.

Lime Rock Resources A, L.P. proposes to drill/test the Yeso formation. Approximately 420' will be drilled with fresh water, then set and cement 8 5/8" surface casing to 420'.

Drill 7 7/8" hole to T.D. at approx. 4,000'. Run OH logs. Set 5 1/2" casing to T.D. and cement will be circulated back to surface.

Will perforate the Yeso formation and stimulate, as necessary, for optimum production. Produce well by flowing or pumping.

H2S levels are not expected to be high enough to require an H2 S program.

See Exhibit "A" for BOP.

<sup>23</sup> I hereby certify that the information given above is true and complete to the best of my knowledge and belief.

Signature:

*George R. Smith*

Printed name  
George R. Smith

Title  
Agent for Lime Rock Resources A, L.P.:

E-mail Address  
gr.smith130@yahoo.com

Date  
4/24/09

Phone  
575-623-4940

**OIL CONSERVATION DIVISION**

Approved by:

*Jacqui Brewer*  
Geologist

Title:

Approval Date:

5/4/2009

Expiration Date:

5/4/2011

Conditions of Approval Attached ☐

DISTRICT I  
1625 N. FRENCH DR., HOBBS, NM 88240

DISTRICT II  
1301 W. GRAND AVENUE, ARTESIA, NM 88210

DISTRICT III  
1000 Rio Brazos Rd., Aztec, NM 87410

DISTRICT IV  
1220 S. ST. FRANCIS DR., SANTA FE, NM 87505

State of New Mexico  
Energy, Minerals and Natural Resources Department

OIL CONSERVATION DIVISION  
1220 SOUTH ST. FRANCIS DR.  
Santa Fe, New Mexico 87505

Form C-102  
Revised October 12, 2005  
Submit to Appropriate District Office  
State Lease - 4 Copies  
Fee Lease - 3 Copies

WELL LOCATION AND ACREAGE DEDICATION PLAT

☐ AMENDED REPORT

|                                   |   |   |
|-----------------------------------|---|---|
| API Number<br><b>30-015-37056</b> | Pool Code<br><b>96836</b>                           | Pool Name<br><b>Red; Glorieta-Yeso-NE</b> |
| Property Code<br><b>305451</b>    | Property Name<br><b>STALEY STATE</b>                | Well Number<br><b>6</b>                   |
| OGRID No.<br><b>255333</b>        | Operator Name<br><b>LIME ROCK RESOURCES A, L.P.</b> | Elevation<br><b>3593'</b>                 |

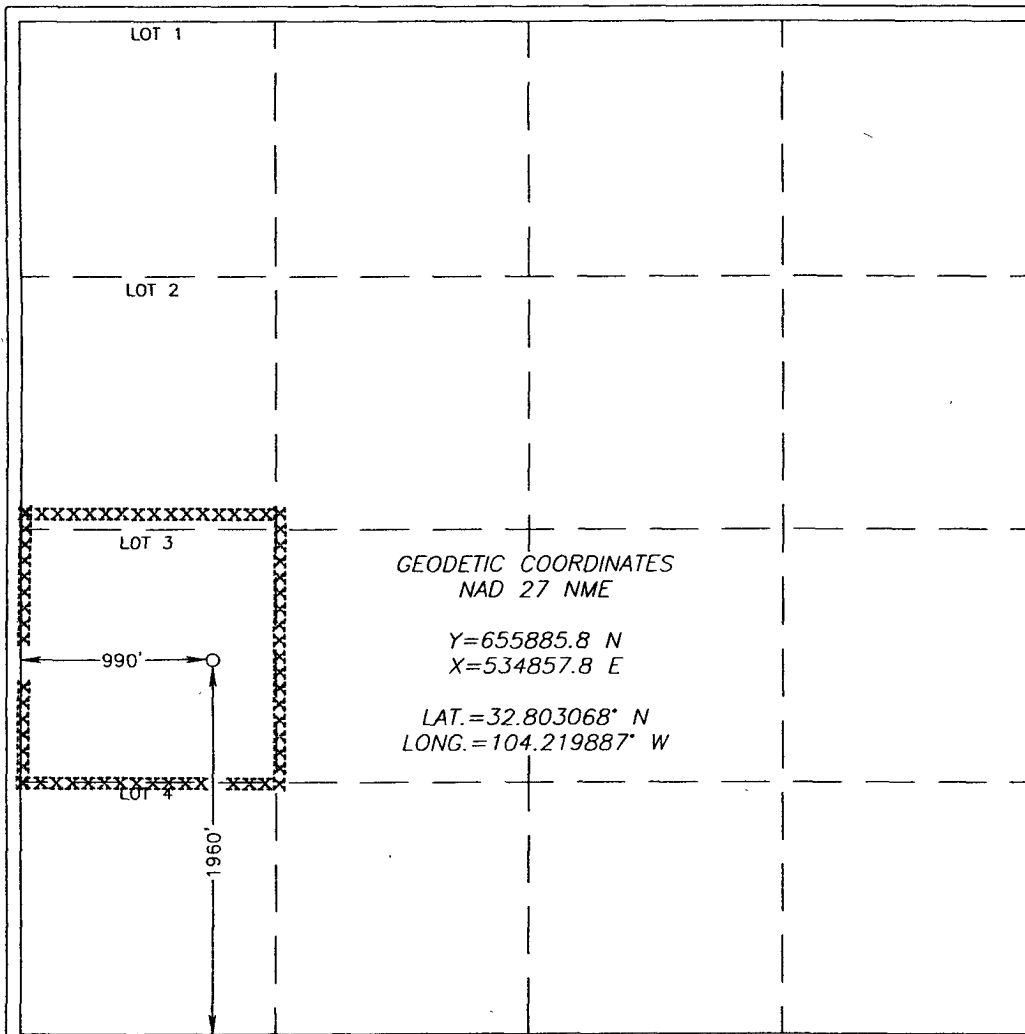
Surface Location

|                           |                      |                         |                      |         |                              |                                  |                             |                               |                       |
|---------------------------|----------------------|-------------------------|----------------------|---------|------------------------------|----------------------------------|-----------------------------|-------------------------------|-----------------------|
| UL or lot No.<br><b>3</b> | Section<br><b>30</b> | Township<br><b>17-S</b> | Range<br><b>28-E</b> | Lot Idn | Feet from the<br><b>1960</b> | North/South line<br><b>SOUTH</b> | Feet from the<br><b>990</b> | East/West line<br><b>WEST</b> | County<br><b>EDDY</b> |
|---------------------------|----------------------|-------------------------|----------------------|---------|------------------------------|----------------------------------|-----------------------------|-------------------------------|-----------------------|

Bottom Hole Location If Different From Surface

|                              |                 |                    |           |         |               |                  |               |                |        |
|------------------------------|-----------------|--------------------|-----------|---------|---------------|------------------|---------------|----------------|--------|
| UL or lot No.                | Section         | Township           | Range     | Lot Idn | Feet from the | North/South line | Feet from the | East/West line | County |
| Dedicated Acres<br><b>40</b> | Joint or Infill | Consolidation Code | Order No. |         |               |                  |               |                |        |

NO ALLOWABLE WILL BE ASSIGNED TO THIS COMPLETION UNTIL ALL INTERESTS HAVE BEEN CONSOLIDATED  
OR A NON-STANDARD UNIT HAS BEEN APPROVED BY THE DIVISION



OPERATOR CERTIFICATION

I hereby certify that the information herein is true and complete to the best of my knowledge and belief, and that this organization either owns a working interest or unleased mineral interest in the land including the proposed bottom hole location or has a right to drill this well at this location pursuant to a contract with an owner of such mineral or working interest, or to a voluntary pooling agreement or a compulsory pooling order heretofore entered by the division.

*George R. Smith* 4/24/09  
Signature Date  
George R. Smith, POA agent  
Printed Name

SURVEYOR CERTIFICATION

I hereby certify that the well location shown on this plat was plotted from field notes of actual surveys made by me or under my supervision, and that the same is true and correct to the best of my belief.

*Ronald J. Eidson* 3/27/09  
Date Surveyed Signature & Seal of Professional Surveyor  
Certificate No. GARY EIDSON 12641  
RONALD J. EIDSON 3239

# BOP DIAGRAM 3000# SYSTEM

