

District I
1625 N. French Dr., Hobbs, NM 88240
District II
1301 W. Grand Avenue, Artesia, NM 88210
District III
1000 Rio Brazos Road, Aztec, NM 87410
District IV
1220 S. St. Francis Dr., Santa Fe, NM 87505

State of New Mexico
Energy Minerals and Natural Resources

MAY - 1 2009

Form C-101
June 16, 2008

Oil Conservation Division
1220 South St. Francis Dr.
Santa Fe, NM 87505

Submit to appropriate District Office

☐ AMENDED REPORT

**APPLICATION FOR PERMIT TO DRILL, RE-ENTER, DEEPEN,
PLUGBACK, OR ADD A ZONE**

¹ Operator Name and Address Lime Rock Resources A, L.P. 1111 Bagby Street, Suite 4600 Houston, TX 77002		² OGRID Number 255333
		³ API Number 30-015-37057
³ Property Code 305465	⁵ Property Name NW STATE	⁶ Well No. 31
⁹ Proposed Pool 1 ARTESIA; QUEEN-GRAYBURG-SA (3230)		¹⁰ Proposed Pool 2

Surface Location

UL or lot no	Section	Township	Range	Lot Idn	Feet from the	North/South line	Feet from the	East/West line	County
N	32	17-S	28-E		330	SOUTH	1750	WEST	EDDY

Proposed Bottom Hole Location If Different From Surface

UL or lot no	Section	Township	Range	Lot Idn	Feet from the	North/South line	Feet from the	East/West line	County
--------------	---------	----------	-------	---------	---------------	------------------	---------------	----------------	--------

Additional Well Information

¹¹ Work Type Code N	¹² Well Type Code O	¹³ Cable/Rotary ROTARY	¹⁴ Lease Type Code S	¹⁵ Ground Level Elevation 3666'
¹⁶ Multiple N	¹⁷ Proposed Depth 3,500'	¹⁸ Formation SAN ANDRES	¹⁹ Contractor UNITED DRILLING	²⁰ Spud Date 6-25-09

Proposed Casing and Cement Program

Hole Size	Casing Size	Casing weight/foot	Setting Depth	Sacks of Cement	Estimated TOC
12 1/4"	8 5/8"	24#	450'	350 sx CI C	Surface
7 7/8"	5 1/2"	14#	3,500'	400 Poz + 400 Lite	Surface

²² Describe the proposed program. If this application is to DEEPEN or PLUG BACK, give the data on the present productive zone and proposed new productive zone. Describe the blowout prevention program, if any. Use additional sheets if necessary.

Drilling operations will utilize a closed loop mud system w/fresh water during surface hole and brine fluids after BOP info attached. Plan to drill a 12-1/4" hole to approx. 450', then set and cement 8-5/8" casing to 450'. Class C cement will be circulated back to surface.

Drill 7 7/8" hole to TD of approx. 3500'. Run OH logs. Set 5 1/2" casing to TD and cement will be circulated back to surface. Perforate the San Andres interval. Stimulate as necessary for optimum production. Produce well by flowing or pumping.

H2S levels are not expected to high enough to require a H2S Contingency Plan

²³ I hereby certify that the information given above is true and complete to the best of my knowledge and belief.

Signature.

George R. Smith

Printed name
George R. Smith:

Title:
POA Agent for Lime Rock Resources A, L.P.

E-mail Address
grsmith130@yahoo.com

Date:
April 24, 2009

Phone.
(575) 623-4940

OIL CONSERVATION DIVISION

Approved by:

Jacqui Reener
Geologist

Title:

Approval Date:

5/4/2009

Expiration Date:

5/4/2011

Conditions of Approval Attached ☐

DISTRICT I
1625 N. FRENCH DR., HOBBS, NM 88240

DISTRICT II
1301 W. GRAND AVENUE, ARTESIA, NM 88210

DISTRICT III
1000 Rio Brazos Rd., Aztec, NM 87410

DISTRICT IV
1220 S. ST. FRANCIS DR., SANTA FE, NM 87505

State of New Mexico
Energy, Minerals and Natural Resources Department

OIL CONSERVATION DIVISION
1220 SOUTH ST. FRANCIS DR.
Santa Fe, New Mexico 87505

Form C-102
Revised October 12, 2005
Submit to Appropriate District Office
State Lease - 4 Copies
Fee Lease - 3 Copies

WELL LOCATION AND ACREAGE DEDICATION PLAT

☐ AMENDED REPORT

API Number 30-015-37057	Pool Code 3230	Pool Name Artesia; Queen-Grayburg-San Andres
Property Code 305465 /	Property Name N W STATE	Well Number 31
OGRID No. 255333	Operator Name LIME ROCK RESOURCES A, L.P.	Elevation 3666'

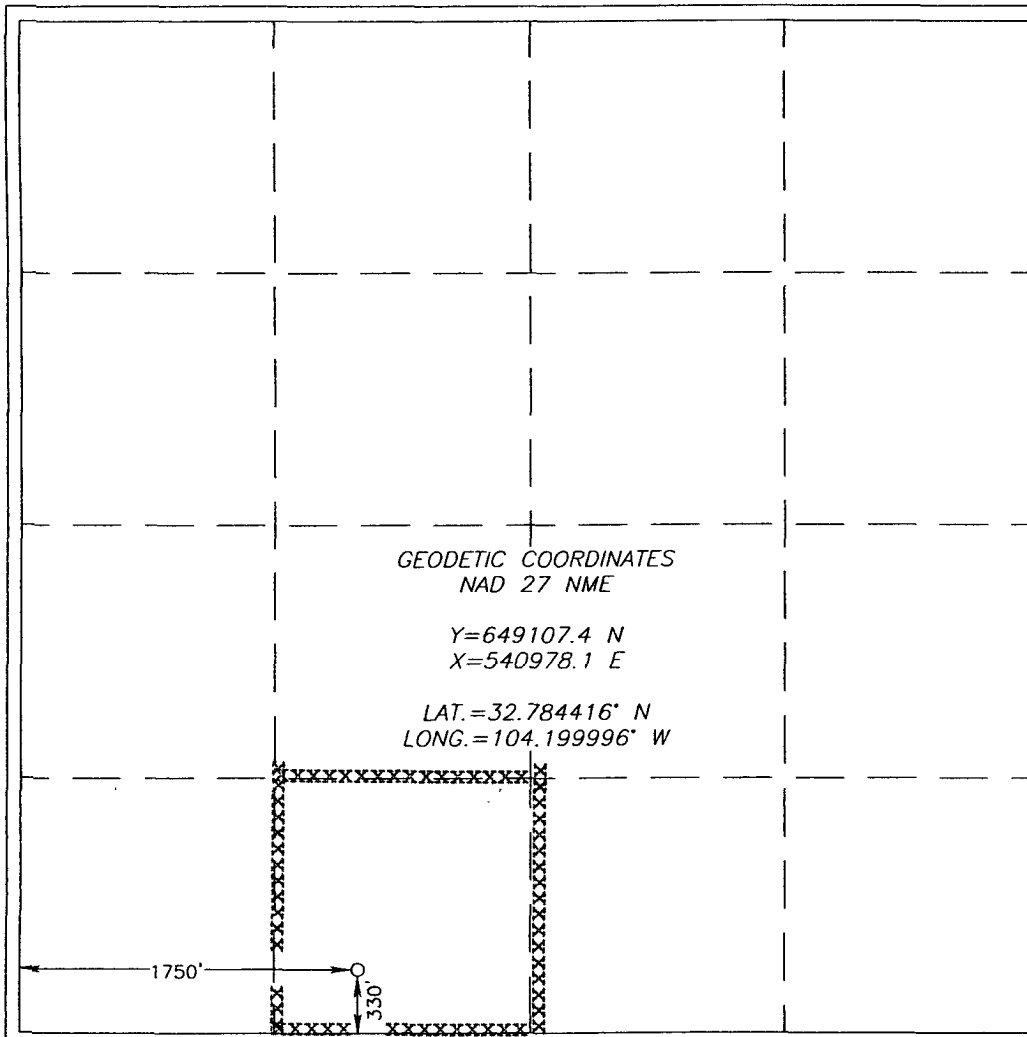
Surface Location

UL or lot No.	Section	Township	Range	Lot Idn	Feet from the	North/South line	Feet from the	East/West line	County
N	32	17-S	28-E		330	SOUTH	1750	WEST	EDDY ✓

Bottom Hole Location If Different From Surface

UL or lot No.	Section	Township	Range	Lot Idn	Feet from the	North/South line	Feet from the	East/West line	County
Dedicated Acres 40	Joint or Infill	Consolidation Code	Order No.						

NO ALLOWABLE WILL BE ASSIGNED TO THIS COMPLETION UNTIL ALL INTERESTS HAVE BEEN CONSOLIDATED
OR A NON-STANDARD UNIT HAS BEEN APPROVED BY THE DIVISION



OPERATOR CERTIFICATION

I hereby certify that the information herein is true and complete to the best of my knowledge and belief, and that this organization either owns a working interest or unleased mineral interest in the land including the proposed bottom hole location or has a right to drill this well at this location pursuant to a contract with an owner of such mineral or working interest, or to a voluntary pooling agreement or a compulsory pooling order heretofore entered by the division.

George R. Smith 4/24/09
Signature Date

George R. Smith, POA agent
Printed Name

SURVEYOR CERTIFICATION

I hereby certify that the well location shown on this plat was plotted from field notes of actual surveys made by me or under my supervision, and that the same is true and correct to the best of my belief.

RONALD J. EIDSON
MARCH 25, 2009
NEW MEXICO
Date Surveyed
Signature & Seal of Professional Surveyor
3239
RONALD J. EIDSON
03/27/09

Certificate No. GARY EIDSON 12641
RONALD J. EIDSON 3239

BOP DIAGRAM 3000# SYSTEM

