

District I  
1625 N. French Dr., Hobbs, NM 88240  
District II  
1301 W. Grand Avenue, Artesia, NM 88210  
District III  
1000 Rio Brazos Road, Aztec, NM 87410  
District IV  
1220 S. St. Francis Dr., Santa Fe, NM 87505

State of New Mexico  
Energy Minerals and Natural Resources

MAY - 8 2009

Form C-101  
June 16, 2008

Rm

Oil Conservation Division  
1220 South St. Francis Dr.  
Santa Fe, NM 87505

Submit to appropriate District Office

☐ AMENDED REPORT

APPLICATION FOR PERMIT TO DRILL, RE-ENTER, DEEPEN, PLUGBACK, OR ADD A ZONE

<sup>1</sup> Operator Name and Address Nadel and Gussman HEYCO, LLC P.O. Box 1936 Roswell N.M. 88202		<sup>2</sup> OGRID Number 258462
<sup>3</sup> Property Code 305002	<sup>4</sup> Property Name Aid State	<sup>5</sup> API Number 30 - 015 - 37068
<sup>9</sup> Proposed Pool 1 Blneby		<sup>10</sup> Proposed Pool 2 Grayburg

<sup>7</sup> Surface Location

UL or lot no.	Section	Township	Range	Lot Idn	Feet from the	North/South line	Feet from the	East/West line	County
O	13	17S	28E		330'	SOUTH	1650'	EAST	EDDY

<sup>8</sup> Proposed Bottom Hole Location If Different From Surface

UL or lot no.	Section	Township	Range	Lot Idn	Feet from the	North/South line	Feet from the	East/West line	County
0	13	17S	28E		330'	SOUTH	1650'	EAST	EDDY

Additional Well Information

<sup>11</sup> Work Type Code N	<sup>12</sup> Well Type Code O	<sup>13</sup> Cable/Rotary R	<sup>14</sup> Lease Type Code S	<sup>15</sup> Ground Level Elevation 3704
<sup>16</sup> Multiple Y	<sup>17</sup> Proposed Depth 5400	<sup>18</sup> Formation TUBB	<sup>19</sup> Contractor	<sup>20</sup> Spud Date

<sup>21</sup> Proposed Casing and Cement Program

Hole Size	Casing Size	Casing weigh/foot	Setting Depth	Sacks of Cement	Estimated TOC
12 1/4"	9 5/8"	36#	300'	169 sx	Surface
7 7/8"	5 1/2"	15.5#	5300'	805 sx	1542'

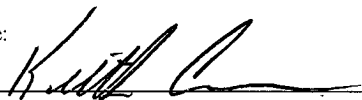
<sup>22</sup> Describe the proposed program. If this application is to DEEPEN or PLUG BACK, give the data on the present productive zone and proposed new productive zone. Describe the blowout prevention program, if any. Use additional sheets if necessary.

Mud Program:

0' to 300': 8.4 to 8.8 ppg, 80 - 55 visc w/ Fresh water spud mud  
300' to 5300': 8.8 to 10.0 ppg, 28-30 visc, w/ brine / cut brine water

<sup>23</sup> I hereby certify that the information given above is true and complete to the best of my knowledge and belief.

Signature:



Printed name:

Keith Cannon

Title:

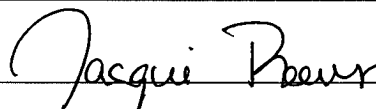
Drilling Superintendent

E-mail Address:

kcannon@heycoenergy.com

OIL CONSERVATION DIVISION

Approved by:



Title:

Geologist

Approval Date:

5/13/2009

Expiration Date:

5/13/2011

Date: 5/8/2009	Phone: 575 - 623-6601	Conditions of Approval Attached <input type="checkbox"/>
-------------------	--------------------------	--

DISTRICT I  
1625 N. FRENCH DR., HOBBS, NM 88240

DISTRICT II  
1301 W. GRAND AVENUE, ARTESIA, NM 88210

DISTRICT III  
1000 RIO BRAZOS RD., AZTEC, NM 87410

DISTRICT IV  
11885 S. ST. FRANCIS DR., SANTA FE, NM 87505

State of New Mexico  
Energy, Minerals and Natural Resources Department

OIL CONSERVATION DIVISION  
11885 SOUTH ST. FRANCIS DR.  
Santa Fe, New Mexico 87505

Form C-102  
Revised October 12, 2005  
Submit to Appropriate District Office  
State Lease - 4 Copies  
Fee Lease - 3 Copies

WELL LOCATION AND ACREAGE DEDICATION PLAT

☐ AMENDED REPORT

API Number 30-015-37068	Pool Code 96210 /	Pool Name Empire Glorieta-Yeso
Property Code	Property Name AID STATE	Well Number 2
OGRID No. 258462	Operator Name NADEL AND GUSSMAN HEYCO, LLC	Elevation 3704'

Surface Location

UL or lot No. 0	Section 13	Township 17-S	Range 28-E	Lot Idn	Feet from the 330	North/South line SOUTH	Feet from the 1650	East/West line EAST	County EDDY
--------------------	---------------	------------------	---------------	---------	----------------------	---------------------------	-----------------------	------------------------	----------------

Bottom Hole Location If Different From Surface

UL or lot No. 0	Section 13	Township 17-S	Range 28-E	Lot Idn	Feet from the 330	North/South line South	Feet from the 1650	East/EAST line East	County Eddy
Dedicated Acres 40	Joint or Infill	Consolidation Code	Order No.						

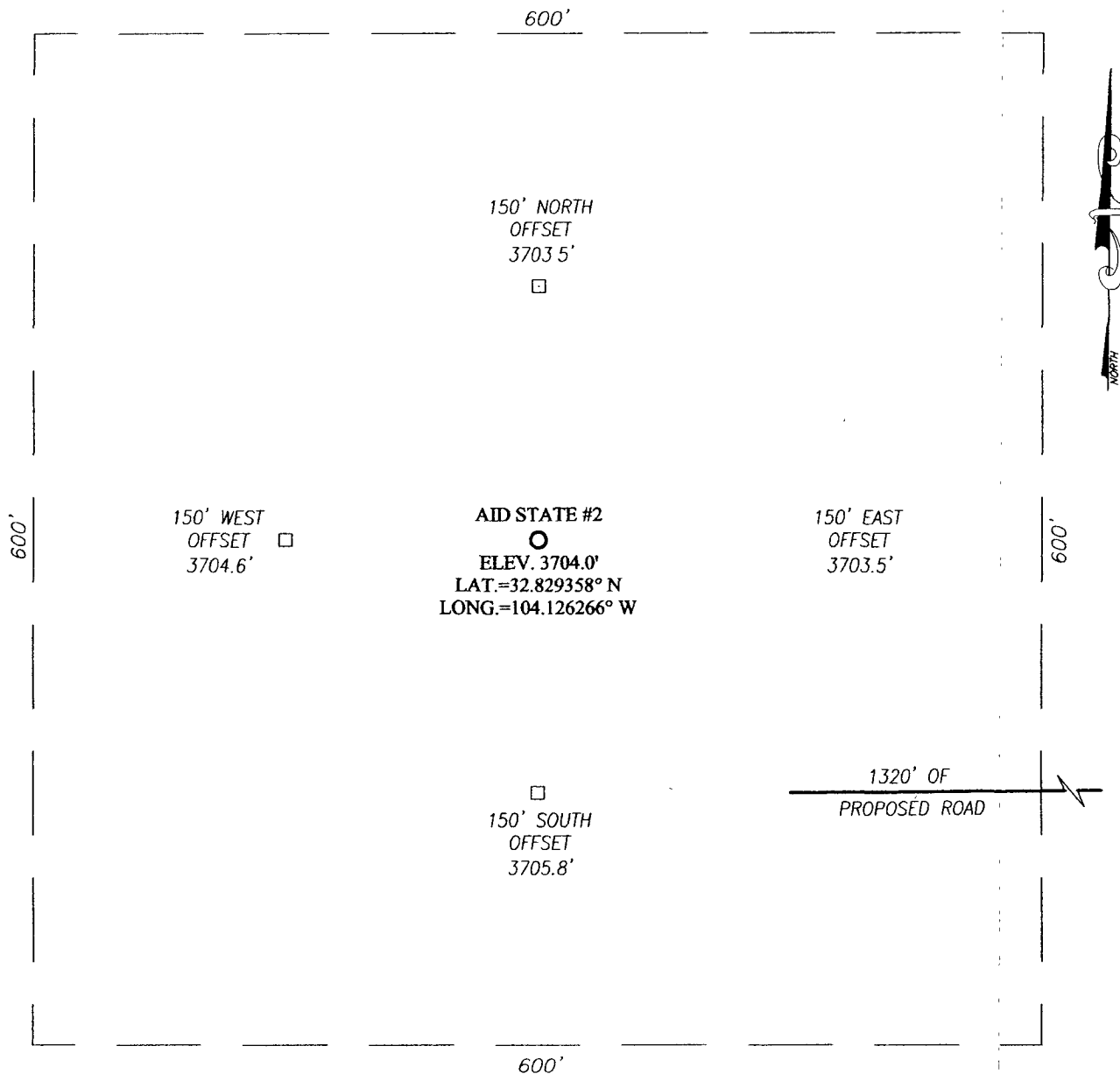
NO ALLOWABLE WILL BE ASSIGNED TO THIS COMPLETION UNTIL ALL INTERESTS HAVE BEEN CONSOLIDATED  
OR A NON-STANDARD UNIT HAS BEEN APPROVED BY THE DIVISION

<p>GEODETIC COORDINATES NAD 27 NME  Y=665494.0 N X=563605.3 E  LAT.=32.829358° N LONG =104.126266° W</p>				<p>OPERATOR CERTIFICATION</p> <p>I hereby certify that the information herein is true and complete to the best of my knowledge and belief, and that this organization either owns a working interest or unleased mineral interest in the land including the proposed bottom hole location or has a right to drill this well at this location pursuant to a contract with an owner of such mineral or working interest, or to a voluntary pooling agreement or a compulsory pooling order heretofore entered by the division.</p> <p><i>Keith Cannon</i> 5/8/09 Signature Date</p> <p>Keith Cannon Printed Name</p>	
<p>LG-3782</p>				<p>SURVEYOR CERTIFICATION</p> <p>I hereby certify that the well location shown on this plat was plotted from field notes of actual surveys made by me or under my supervision, and that the same is true and correct to the best of my belief.</p> <p><i>Ronald J. Eidson</i> Signature &amp; Seal of Professional Surveyor</p> <p>APR 30 2009 Date Surveyed DSS</p> <p>Certificate No. GARY G. EIDSON 12641 RONALD J. EIDSON 3239</p>	

# SECTION 13, TOWNSHIP 17 SOUTH, RANGE 28 EAST, N.M.P.M.,

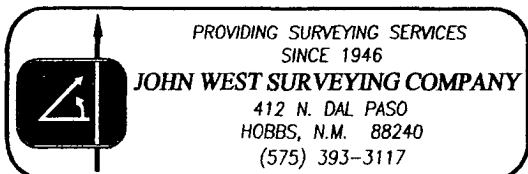
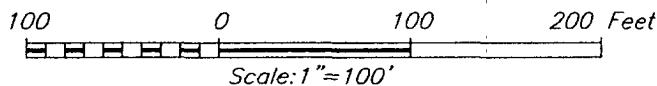
EDDY COUNTY,

NEW MEXICO



## DIRECTIONS TO LOCATION

FROM THE INTERSECTION OF STATE HIGHWAY 82 AND COUNTY ROAD 211 (OLD LOCO ROAD), GO SOUTHWEST ON STATE HIGHWAY 82 APPROX. 0.85 MILES. TURN RIGHT ON CALICHE ROAD AND GO NORTH APPROX. 0.15 MILES. VEER RIGHT AND GO NORTHEAST APPROX. 0.1 MILE. VEER LEFT AND GO NORTH APPROX. 0.3 MILES. TURN LEFT AND GO SOUTHWEST APPROX. 0.25 MILES. VEER RIGHT AND GO NORTHWEST APPROX. 0.25 MILES. VEER LEFT AND GO WEST APPROX. 300 FEET. VEER RIGHT AND GO NORTHWEST APPROX. 0.4 MILES. VEER RIGHT AND GO NORTH APPROX. 0.3 MILES. TURN LEFT AND GO WEST APPROX. 170 FEET TO THE NADEL AND GUSSMAN HEYCO, LLC, AID STATE #3 WELL. CONTINUE WEST ON PROPOSED ROAD SURVEY APPROX. 0.25 MILES TO THIS LOCATION.

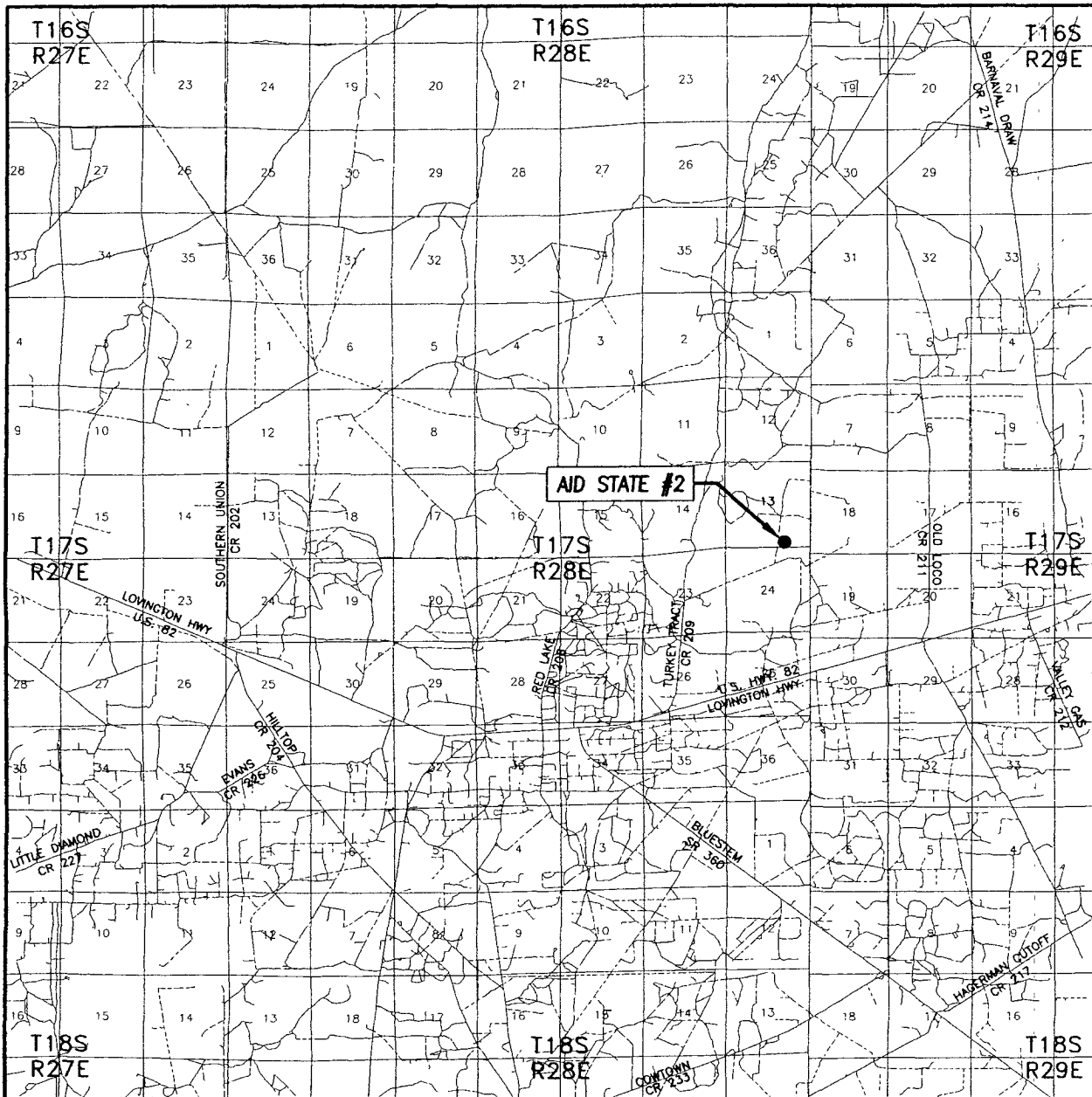


## NADEL AND GUSSMAN HEYCO, LLC

AID STATE #2 WELL  
LOCATED 330 FEET FROM THE SOUTH LINE  
AND 1650 FEET FROM THE EAST LINE OF SECTION 13,  
TOWNSHIP 17 SOUTH, RANGE 28 EAST, N.M.P.M.,  
EDDY COUNTY, NEW MEXICO.

Survey Date: 4/30/09	Sheet 1 of 1 Sheets
W.O. Number: 09.11.0403	Dr By: DSS
Date: 4/4/09	09110403
	Scale: 1"=100'

# VICINITY MAP



SCALE: 1" = 2 MILES

SEC. 13 TWP. 17-S RGE. 28-E

SURVEY N.M.P.M.

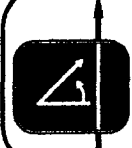
COUNTY EDDY STATE NEW MEXICO

DESCRIPTION 330' FSL & 1650' FEL

ELEVATION 3704'

OPERATOR NADEL AND GUSSMAN HEYCO, LLC

LEASE AID STATE

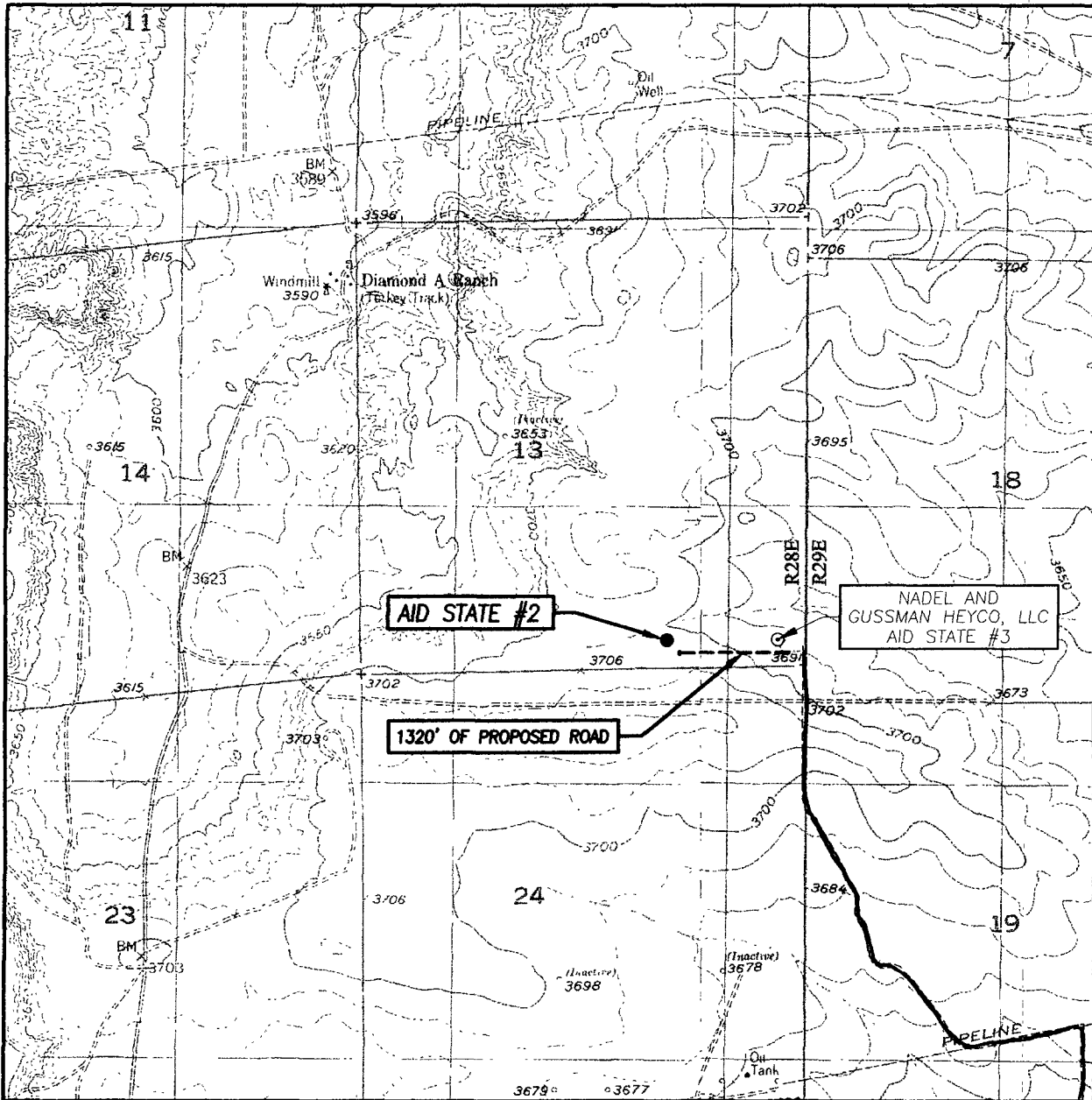


PROVIDING SURVEYING SERVICES  
SINCE 1946

**JOHN WEST SURVEYING COMPANY**

412 N. DAL PASO  
HOBBS, N.M. 88240  
(575) 393-3117

# LOCATION VERIFICATION MAP



SCALE: 1" = 2000'

CONTOUR INTERVAL:  
RED LAKE, N.M. - 10'  
RED LAKE SE, N.M. - 10'

SEC. 13 TWP. 17-S RGE. 28-E

SURVEY N.M.P.M.

COUNTY EDDY STATE NEW MEXICO

DESCRIPTION 330' FSL & 1650' FEL

ELEVATION 3704'

OPERATOR NADEL AND GUSSMAN HEYCO, LLC

LEASE AID STATE

U.S.G.S. TOPOGRAPHIC MAP  
RED LAKE, N.M.

PROVIDING SURVEYING SERVICES  
SINCE 1946

**JOHN WEST SURVEYING COMPANY**

412 N. DAL PASO  
HOBBS, N.M. 88240  
(575) 393-3117