

UNITED STATES  
DEPARTMENT OF THE INTERIOR  
BUREAU OF LAND MANAGEMENT

Oil Cons.  
N.M. Div-Dist. 2  
1301 W. Grand Avenue  
Artesia, NM 88210

FORM APPROVED  
OMB No. 1004-0135  
Expires: January 31, 2004

**SUNDRY NOTICES AND REPORTS ON ARTESIA, NM 88210**  
**Do not use this form for proposals to drill or to re-enter an abandoned well. Use Form 3160-3 (APD) for such proposals.**

5. Lease Serial No.

NMNM-33437

6. If Indian, Allottee or Tribe Name

7. If Unit or C/A Agreement, Name and/or No.

25198

8. Well Name and No.

Fren 8 Fed Com #7

9. API Well No.

30-015-33091

10. Field and Pool, or Exploratory Area

Shugart Strawn

11. County or Parish, State

Eddy County, NM

**SUBMIT IN TRIPLICATE - Other instructions on reverse side**

1. Type of Well

☐ Oil Well ☒ Gas Well ☐ Other

2. Name of Operator

Mewbourne Oil Company 14744

3a. Address

PO Box 5270 Hobbs, NM 88240

3b. Phone No. (include area code)

505-393-5905

4. Location of Well (Footage, Sec., T, R., M., or Survey Description)

1650' FNL & 1980' FWL, Unit Letter F of Sec 8-T18S-R31E

RECEIVED

DEC 2 9 2003

OCD-ARTESIA

**12. CHECK APPROPRIATE BOX(ES) TO INDICATE NATURE OF NOTICE, REPORT, OR OTHER DATA**

**TYPE OF SUBMISSION**

**TYPE OF ACTION**

☒ Notice of Intent

☐ Subsequent Report

☐ Final Abandonment Notice

☐ Acidize

☐ Alter Casing

☐ Casing Repair

☐ Change Plans

☐ Convert to Injection

☐ Deepen

☐ Fracture Treat

☐ New Construction

☐ Plug and Abandon

☐ Plug Back

☐ Production (Start/Resume)

☐ Reclamation

☐ Recomplete

☐ Temporarily Abandon

☐ Water Disposal

☐ Water Shut-Off

☐ Well Integrity

☒ Other Spud & Csg Jobs

3. Describe Proposed or Completed Operation (clearly state all pertinent details, including estimated starting date of any proposed work and approximate duration thereof. If the proposal is to deepen directionally or recompleate horizontally, give subsurface locations and measured and true vertical depths of all pertinent markers and zones. Attach the Bond under which the work will be performed or provide the Bond No. on file with BLM/BIA. Required subsequent reports shall be filed within 30 days following completion of the involved operations. If the operation results in a multiple completion or recompleation in a new interval, a Form 3160-4 shall be filed once testing has been completed. Final Abandonment Notices shall be filed only after all requirements, including reclamation, have been completed, and the operator has determined that the site is ready for final inspection.)

12/04/03...MI & spud 17 1/2" hole. TD'd hole @ 620'. Ran 620' 13 3/8" 48# H40 ST&C csg. Cemented w/ 400 sks Poz "C" w/ additives. Mixed @ 12.5 #/g w/ 1.98 yd. Tailed w/ 200 sk Class "C" w/ 2% CaCl2. Mixed @ 14.8 #/g w/ 1.34 yd. Circ 90 sks to pit. WOC 18 hrs. Test BOPE to 800 psi, OK. Drill out w/ 12 1/4" bit.

12/10/03...TD'ed 12 1/4" hole @ 3505'. Ran 3505' 9 5/8" 40# K55/N80 LT&C Csg. Cemented w/ 1200 sks Poz "C" w/ additives. Mixed @ 12.5 #/g w/ 1.96 yd. Tailed w/ 200 sks Class "C" w/ 2% CaCl2. Mixed @ 14.8 #/g w/ 1.34 yd. Circ 98 sks to pit. WOC 18 hrs.

\*Test BOPE as required. All equipment passed. Charts and schematic attached. Drill out w/ 8 3/4" bit.

ACCEPTED FOR RECORD

DEC 18 2003

ALEXIS C. SWOBODA  
PETROLEUM ENGINEER

14. I hereby certify that the foregoing is true and correct

Name (Printed/Typed)

NM Young

Title Hobbs District Manager

Signature

Date 09/15/03

THIS SPACE FOR FEDERAL OR STATE OFFICE USE

Approved by (Signature)

Name  
(Printed/Typed)

Title

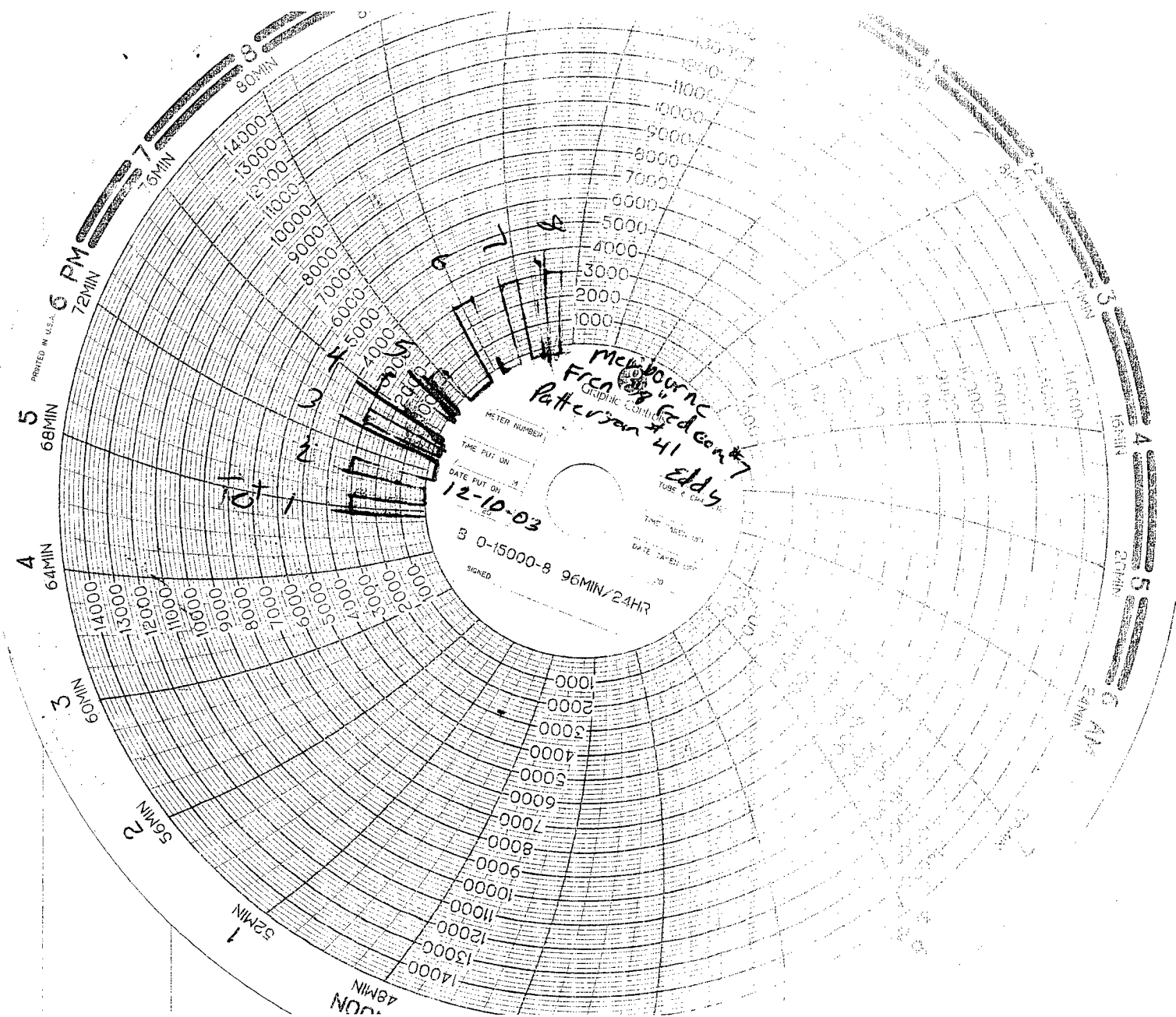
Conditions of approval, if any, are attached. Approval of this notice does not warrant or certify that the applicant holds legal or equitable title to those rights in the subject lease which would entitle the applicant to conduct operations thereon.

Office

Date

Title 18 U.S.C. Section 1001 and Title 43 U.S.C. Section 1212, make it a crime for any person knowingly and willfully to make to any department or agency of the United States any false, fictitious or fraudulent statements or representations as to any matter within its jurisdiction.

(Continued on next page)



RECEIVED  
DEC 28 2003  
OCD-ARTESIA

# MAN WELDING SERVICE

(505) 396-4540

INVOICE NO 8-2220

Company Mewbourne Date 12-10-13 Start Time 1200 ☐ am ☐ pm

Lease Fron "8" Fedcon "7" County add State nm

Company Man \_\_\_\_\_

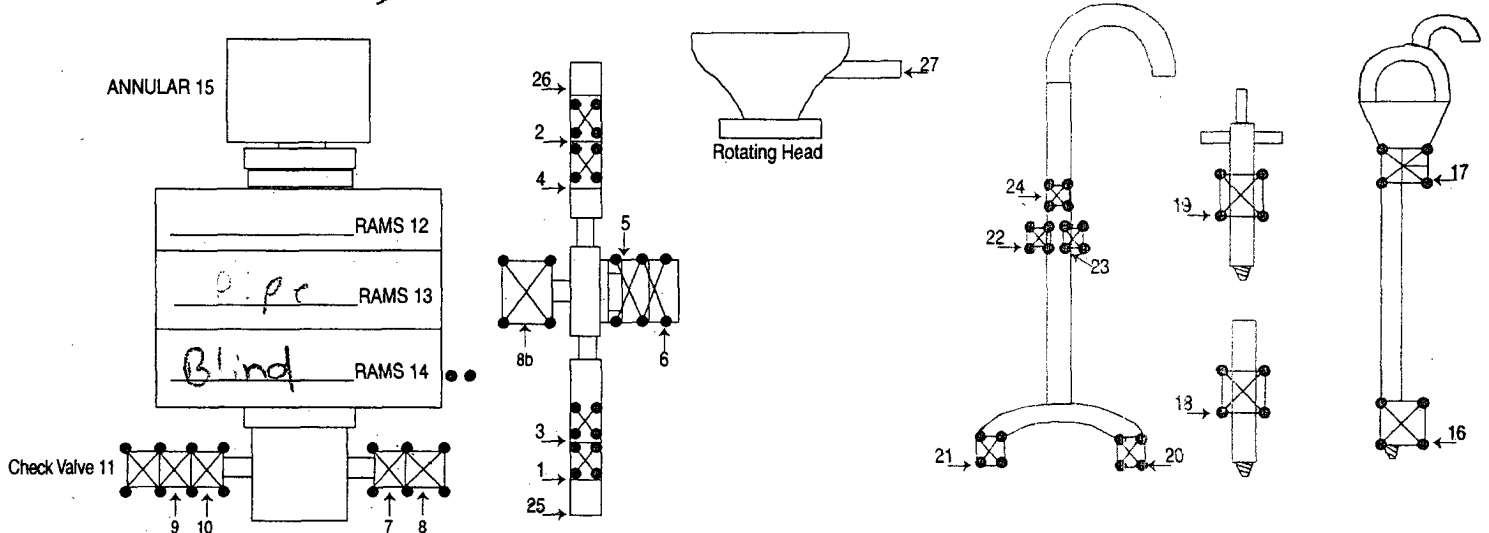
Wellhead Vender \_\_\_\_\_ Tester K-H 6011's

Drig. Contractor R. Herson Rig # 41

Tool Pusher \_\_\_\_\_

Plug Type C-22 Plug Size 11" Drill Pipe Size 4 1/2" X 14

Casing Valve Opened 4-5 Check Valve Open 4-5



TEST #	ITEMS TESTED	TEST LENGTH	LOW PSI	HIGH PSI	REMARKS
1	25, 26, 5, 10, 14	10 min		3000	
2	1, 2, 5, 9, 14	10 min		3000	
3	1, 2, 5, 11, 14	10 min		3000	
4	8, 11, 13	10 min		3000	
5	8, 11, 15	10 min		1500	
6	16	10 min		3000	
7	17	10 min		3000	
8	18	10 min		3000	

8 HR @ \$900<sup>00</sup>  
 2 HR @ \$170<sup>00</sup>  
 Mileage @ \$100<sup>00</sup>  
 Method

*[Signature]*

SUB TOTAL ~~1170~~ 1170<sup>00</sup>  
 TAX ~~5250~~ 61.42  
 TOTAL ~~1170~~ 1231.42

McWourne

Fren 3"

Fed com #7

Patterson

#41

Eddy DM

J.J. 9/00

## Accumulator Function Test

○ CHECK THE USABLE FLUID STORED IN THE NITROGEN BOTTLES ON THE ACCUMULATOR ( O.S.O. #2 section III.A.2.c.i. or ii or iii)

1. Make sure all rams and annular are open and if applicable HCR is closed.
2. Ensure accumulator is pumped up to working pressure! (Shut off all pumps)
3. Open HCR Valve. (If applicable)
4. Close annular.
5. Close all pipe rams.
6. Open one set of the pipe rams to simulate closing the blind ram.
7. If you have a 3 ram stack open the annular to achieve the 50±% safety factor for 5M and greater systems).
8. Accumulator pressure should be 200 psi over desired precharge pressure, ( Accumulator working pressure {1500 psi = 750 desired psi} {2000 and 3000 psi = 1000 desired psi}).

9. Record the remaining pressure 1475 psi.

If annular is closed, open it at this time and close HCR.

○ CHECK THE CAPACITY OF THE ACCUMULATOR PUMPS ( O.S.O. #2 section III.A.2.f.)

Shut the accumulator bottles or spherical, ( isolate them from the pumps & manifold) open the bleed off valve to the tank,( manifold psi should go to 0 psi) close bleed valve.

1. Open the HCR valve, ( if applicable).
2. Close annular.
3. With pumps only, time how long it takes to regain manifold pressure to 200 psi over desired precharge pressure! ( Accumulator working pressure {1500 psi = 750 desired psi} {2000 and 3000 psi = 1000 desired psi}).

4. Record elapsed time 32 <sup>sec.</sup> ( 2 minutes or less)

○ CHECK THE PRECHARGE ON BOTTLES OR SPHERICAL ( O.S.O. #2 section III.A.2.d.)

1. Open bottles back up to the manifold ( pressure should be above the desired precharge pressure, {1500 psi = 750 desired psi} {2000 and 3000 psi = 1000 desired psi}) may need to use pumps to pressure back up.
2. With power to pumps shut off open bleed line to the tank.
3. Watch and record where the pressure drops, ( accumulator psi ).

Record the pressure drop 1000 psi.

If pressure drops below MINIMUM precharge, (Accumulator working pressure {1500 psi = 700 min.} {2000 and 3000psi = 900 psi min.}) each bottle shall be independently checked with a gauge.