

District I
1625 N. French Dr., Hobbs, NM 88240
District II
1301 W. Grand Avenue, Artesia, NM 88210
District III
1000 Rio Brazos Road, Aztec, NM 87410
District IV
1220 S. St. Francis Dr., Santa Fe, NM 87505

State of New Mexico
Energy Minerals and Natural Resources
Department
Oil Conservation Division
1220 South St. Francis Dr.
Santa Fe, NM 87505

For temporary pits, closed-loop systems, and below-grade tanks, submit to the appropriate NMOCD District Office.
For permanent pits and exceptions submit to the Santa Fe Environmental Bureau office and provide a copy to the appropriate NMOCD District Office.

Pit, Closed-Loop System, Below-Grade Tank, or Proposed Alternative Method Permit or Closure Plan Application

Type of action: Permit of a pit, closed-loop system, below-grade tank, or proposed alternative method
 Closure of a pit, closed-loop system, below-grade tank, or proposed alternative method
 Modification to an existing permit
 Closure plan only submitted for an existing permitted or non-permitted pit, closed-loop system, below-grade tank, or proposed alternative method

Instructions: Please submit one application (Form C-144) per individual pit, closed-loop system, below-grade tank or alternative request

Please be advised that approval of this request does not relieve the operator of liability should operations result in pollution of surface water, ground water or the environment. Nor does approval relieve the operator of its responsibility to comply with any other applicable governmental authority's rules, regulations or ordinances.

1.
Operator: Forest Oil Corporation _____ OGRID #:8041 _____
Address: 3504 NW County Road Hobbs, NM 88241 _____
Facility or well name: Lea D 1 _____
API Number: 30-015-05411 _____ OCD Permit Number: _____
U/L or Qtr/Qtr B _____ Section 26 _____ Township 17S _____ Range 31E _____ County: Eddy _____
Center of Proposed Design: Latitude _____ Longitude _____ NAD: 1927 1983
Surface Owner: Federal State Private Tribal Trust or Indian Allotment

2.
 Pit: Subsection F or G of 19.15.17.11 NMAC
Temporary: Drilling Workover
 Permanent Emergency Cavitation P&A
X Lined Unlined Liner type: Thickness 20 _____ mil LLDPE HDPE PVC Other _____
X String-Reinforced
Liner Seams: Welded Factory Other _____ Volume: 50 bbl Dimensions: L18' _____ x W10' _____ x D4' _____

3.
 Closed-loop System: Subsection H of 19.15.17.11 NMAC
Type of Operation: P&A Drilling a new well Workover or Drilling (Applies to activities which require prior approval of a permit or notice of intent)
 Drying Pad Above Ground Steel Tanks Haul-off Bins Other _____
 Lined Unlined Liner type: Thickness _____ mil LLDPE HDPE PVC Other _____
Liner Seams: Welded Factory Other _____

4.
 Below-grade tank: Subsection I of 19.15.17.11 NMAC
Volume: _____ bbl Type of fluid: _____
Tank Construction material: _____
 Secondary containment with leak detection Visible sidewalls, liner, 6-inch lift and automatic overflow shut-off
 Visible sidewalls and liner Visible sidewalls only Other _____
Liner type: Thickness _____ mil HDPE PVC Other _____

5.
 Alternative Method:
Submittal of an exception request is required. Exceptions must be submitted to the Santa Fe Environmental Bureau office for consideration of approval.

6. **Fencing:** Subsection D of 19.15.17.11 NMAC (*Applies to permanent pits, temporary pits, and below-grade tanks*)

Chain link, six feet in height, two strands of barbed wire at top (*Required if located within 1000 feet of a permanent residence, school, hospital, institution or church*)

Four foot height, four strands of barbed wire evenly spaced between one and four feet

Alternate. Please specify _____

7. **Netting:** Subsection E of 19.15.17.11 NMAC (*Applies to permanent pits and permanent open top tanks*)

Screen Netting Other _____

Monthly inspections (If netting or screening is not physically feasible)

8. **Signs:** Subsection C of 19.15.17.11 NMAC

12"x 24", 2" lettering, providing Operator's name, site location, and emergency telephone numbers

Signed in compliance with 19.15.3.103 NMAC

9. **Administrative Approvals and Exceptions:**
 Justifications and/or demonstrations of equivalency are required. Please refer to 19.15.17 NMAC for guidance.
Please check a box if one or more of the following is requested, if not leave blank:

Administrative approval(s): Requests must be submitted to the appropriate division district or the Santa Fe Environmental Bureau office for consideration of approval.

Exception(s): Requests must be submitted to the Santa Fe Environmental Bureau office for consideration of approval.

10. **Siting Criteria (regarding permitting):** 19.15.17.10 NMAC

Instructions: The applicant must demonstrate compliance for each siting criteria below in the application. Recommendations of acceptable source material are provided below. Requests regarding changes to certain siting criteria may require administrative approval from the appropriate district office or may be considered an exception which must be submitted to the Santa Fe Environmental Bureau office for consideration of approval. Applicant must attach justification for request. Please refer to 19.15.17.10 NMAC for guidance. Siting criteria does not apply to drying pads or above-grade tanks associated with a closed-loop system.

Ground water is less than 50 feet below the bottom of the temporary pit, permanent pit, or below-grade tank. - NM Office of the State Engineer - iWATERS database search; USGS; Data obtained from nearby wells	<input type="checkbox"/> Yes <input type="checkbox"/> No
Within 300 feet of a continuously flowing watercourse, or 200 feet of any other significant watercourse or lakebed, sinkhole, or playa lake (measured from the ordinary high-water mark). - Topographic map; Visual inspection (certification) of the proposed site	<input type="checkbox"/> Yes <input type="checkbox"/> No
Within 300 feet from a permanent residence, school, hospital, institution, or church in existence at the time of initial application. (<i>Applies to temporary, emergency, or cavitation pits and below-grade tanks</i>) - Visual inspection (certification) of the proposed site; Aerial photo; Satellite image	<input type="checkbox"/> Yes <input type="checkbox"/> No <input type="checkbox"/> NA
Within 1000 feet from a permanent residence, school, hospital, institution, or church in existence at the time of initial application. (<i>Applies to permanent pits</i>) - Visual inspection (certification) of the proposed site; Aerial photo; Satellite image	<input type="checkbox"/> Yes <input type="checkbox"/> No <input type="checkbox"/> NA
Within 500 horizontal feet of a private, domestic fresh water well or spring that less than five households use for domestic or stock watering purposes, or within 1000 horizontal feet of any other fresh water well or spring, in existence at the time of initial application. - NM Office of the State Engineer - iWATERS database search; Visual inspection (certification) of the proposed site	<input type="checkbox"/> Yes <input type="checkbox"/> No
Within incorporated municipal boundaries or within a defined municipal fresh water well field covered under a municipal ordinance adopted pursuant to NMSA 1978, Section 3-27-3, as amended. - Written confirmation or verification from the municipality; Written approval obtained from the municipality	<input type="checkbox"/> Yes <input type="checkbox"/> No
Within 500 feet of a wetland. - US Fish and Wildlife Wetland Identification map; Topographic map; Visual inspection (certification) of the proposed site	<input type="checkbox"/> Yes <input type="checkbox"/> No
Within the area overlying a subsurface mine. - Written confirmation or verification or map from the NM EMNRD-Mining and Mineral Division	<input type="checkbox"/> Yes <input type="checkbox"/> No
Within an unstable area. - Engineering measures incorporated into the design; NM Bureau of Geology & Mineral Resources; USGS; NM Geological Society; Topographic map	<input type="checkbox"/> Yes <input type="checkbox"/> No
Within a 100-year floodplain. - FEMA map	<input type="checkbox"/> Yes <input type="checkbox"/> No

11. **Temporary Pits, Emergency Pits, and Below-grade Tanks Permit Application Attachment Checklist:** Subsection B of 19.15.17.9 NMAC
Instructions: Each of the following items must be attached to the application. Please indicate, by a check mark in the box, that the documents are attached.

Hydrogeologic Report (Below-grade Tanks) - based upon the requirements of Paragraph (4) of Subsection B of 19.15.17.9 NMAC
 Hydrogeologic Data (Temporary and Emergency Pits) - based upon the requirements of Paragraph (2) of Subsection B of 19.15.17.9 NMAC
 Siting Criteria Compliance Demonstrations - based upon the appropriate requirements of 19.15.17.10 NMAC
 Design Plan - based upon the appropriate requirements of 19.15.17.11 NMAC
 Operating and Maintenance Plan - based upon the appropriate requirements of 19.15.17.12 NMAC
 Closure Plan (Please complete Boxes 14 through 18, if applicable) - based upon the appropriate requirements of Subsection C of 19.15.17.9 NMAC and 19.15.17.13 NMAC

Previously Approved Design (attach copy of design) API Number: _____ or Permit Number: _____

12. **Closed-loop Systems Permit Application Attachment Checklist:** Subsection B of 19.15.17.9 NMAC
Instructions: Each of the following items must be attached to the application. Please indicate, by a check mark in the box, that the documents are attached.

Geologic and Hydrogeologic Data (only for on-site closure) - based upon the requirements of Paragraph (3) of Subsection B of 19.15.17.9
 Siting Criteria Compliance Demonstrations (only for on-site closure) - based upon the appropriate requirements of 19.15.17.10 NMAC
 Design Plan - based upon the appropriate requirements of 19.15.17.11 NMAC
 Operating and Maintenance Plan - based upon the appropriate requirements of 19.15.17.12 NMAC
 Closure Plan (Please complete Boxes 14 through 18, if applicable) - based upon the appropriate requirements of Subsection C of 19.15.17.9 NMAC and 19.15.17.13 NMAC

Previously Approved Design (attach copy of design) API Number: _____

Previously Approved Operating and Maintenance Plan API Number: _____ (Applies only to closed-loop system that use above ground steel tanks or haul-off bins and propose to implement waste removal for closure)

13. **Permanent Pits Permit Application Checklist:** Subsection B of 19.15.17.9 NMAC
Instructions: Each of the following items must be attached to the application. Please indicate, by a check mark in the box, that the documents are attached.

Hydrogeologic Report - based upon the requirements of Paragraph (1) of Subsection B of 19.15.17.9 NMAC
 Siting Criteria Compliance Demonstrations - based upon the appropriate requirements of 19.15.17.10 NMAC
 Climatological Factors Assessment
 Certified Engineering Design Plans - based upon the appropriate requirements of 19.15.17.11 NMAC
 Dike Protection and Structural Integrity Design - based upon the appropriate requirements of 19.15.17.11 NMAC
 Leak Detection Design - based upon the appropriate requirements of 19.15.17.11 NMAC
 Liner Specifications and Compatibility Assessment - based upon the appropriate requirements of 19.15.17.11 NMAC
 Quality Control/Quality Assurance Construction and Installation Plan
 Operating and Maintenance Plan - based upon the appropriate requirements of 19.15.17.12 NMAC
 Freeboard and Overtopping Prevention Plan - based upon the appropriate requirements of 19.15.17.11 NMAC
 Nuisance or Hazardous Odors, including H₂S, Prevention Plan
 Emergency Response Plan
 Oil Field Waste Stream Characterization
 Monitoring and Inspection Plan
 Erosion Control Plan
 Closure Plan - based upon the appropriate requirements of Subsection C of 19.15.17.9 NMAC and 19.15.17.13 NMAC

14. **Proposed Closure:** 19.15.17.13 NMAC
Instructions: Please complete the applicable boxes, Boxes 14 through 18, in regards to the proposed closure plan.

Type: Drilling Workover Emergency Cavitation P&A Permanent Pit Below-grade Tank Closed-loop System
 Alternative

Proposed Closure Method: Waste Excavation and Removal
 Waste Removal (Closed-loop systems only)
 On-site Closure Method (Only for temporary pits and closed-loop systems)
 In-place Burial On-site Trench Burial
 Alternative Closure Method (Exceptions must be submitted to the Santa Fe Environmental Bureau for consideration)

15. **Waste Excavation and Removal Closure Plan Checklist:** (19.15.17.13 NMAC) **Instructions:** Each of the following items must be attached to the closure plan. Please indicate, by a check mark in the box, that the documents are attached.

Protocols and Procedures - based upon the appropriate requirements of 19.15.17.13 NMAC
 Confirmation Sampling Plan (if applicable) - based upon the appropriate requirements of Subsection F of 19.15.17.13 NMAC
 Disposal Facility Name and Permit Number (for liquids, drilling fluids and drill cuttings)
 Soil Backfill and Cover Design Specifications - based upon the appropriate requirements of Subsection H of 19.15.17.13 NMAC
 Re-vegetation Plan - based upon the appropriate requirements of Subsection I of 19.15.17.13 NMAC
 Site Reclamation Plan - based upon the appropriate requirements of Subsection G of 19.15.17.13 NMAC

16.

Waste Removal Closure For Closed-loop Systems That Utilize Above Ground Steel Tanks or Haul-off Bins Only: (19.15.17.13.D NMAC)

Instructions: Please identify the facility or facilities for the disposal of liquids, drilling fluids and drill cuttings. Use attachment if more than two facilities are required.

Disposal Facility Name: _____ Disposal Facility Permit Number: _____

Disposal Facility Name: _____ Disposal Facility Permit Number: _____

Will any of the proposed closed-loop system operations and associated activities occur on or in areas that *will not* be used for future service and operations?

Yes (If yes, please provide the information below) No

Required for impacted areas which will not be used for future service and operations:

- Soil Backfill and Cover Design Specifications - based upon the appropriate requirements of Subsection H of 19.15.17.13 NMAC
- Re-vegetation Plan - based upon the appropriate requirements of Subsection I of 19.15.17.13 NMAC
- Site Reclamation Plan - based upon the appropriate requirements of Subsection G of 19.15.17.13 NMAC

17.

Siting Criteria (regarding on-site closure methods only): 19.15.17.10 NMAC

Instructions: Each siting criteria requires a demonstration of compliance in the closure plan. Recommendations of acceptable source material are provided below. Requests regarding changes to certain siting criteria may require administrative approval from the appropriate district office or may be considered an exception which must be submitted to the Santa Fe Environmental Bureau office for consideration of approval. Justifications and/or demonstrations of equivalency are required. Please refer to 19.15.17.10 NMAC for guidance.

- | | |
|---|---|
| Ground water is less than 50 feet below the bottom of the buried waste.
- NM Office of the State Engineer - iWATERS database search; USGS; Data obtained from nearby wells | <input type="checkbox"/> Yes <input type="checkbox"/> No
<input type="checkbox"/> NA |
| Ground water is between 50 and 100 feet below the bottom of the buried waste
- NM Office of the State Engineer - iWATERS database search; USGS; Data obtained from nearby wells | <input type="checkbox"/> Yes <input type="checkbox"/> No
<input type="checkbox"/> NA |
| Ground water is more than 100 feet below the bottom of the buried waste.
- NM Office of the State Engineer - iWATERS database search; USGS; Data obtained from nearby wells | <input type="checkbox"/> Yes <input type="checkbox"/> No
<input type="checkbox"/> NA |
| Within 300 feet of a continuously flowing watercourse, or 200 feet of any other significant watercourse or lakebed, sinkhole, or playa lake (measured from the ordinary high-water mark).
- Topographic map; Visual inspection (certification) of the proposed site | <input type="checkbox"/> Yes <input type="checkbox"/> No |
| Within 300 feet from a permanent residence, school, hospital, institution, or church in existence at the time of initial application.
- Visual inspection (certification) of the proposed site; Aerial photo; Satellite image | <input type="checkbox"/> Yes <input type="checkbox"/> No |
| Within 500 horizontal feet of a private, domestic fresh water well or spring that less than five households use for domestic or stock watering purposes, or within 1000 horizontal feet of any other fresh water well or spring, in existence at the time of initial application.
- NM Office of the State Engineer - iWATERS database; Visual inspection (certification) of the proposed site | <input type="checkbox"/> Yes <input type="checkbox"/> No |
| Within incorporated municipal boundaries or within a defined municipal fresh water well field covered under a municipal ordinance adopted pursuant to NMSA 1978, Section 3-27-3, as amended.
- Written confirmation or verification from the municipality; Written approval obtained from the municipality | <input type="checkbox"/> Yes <input type="checkbox"/> No |
| Within 500 feet of a wetland.
- US Fish and Wildlife Wetland Identification map; Topographic map; Visual inspection (certification) of the proposed site | <input type="checkbox"/> Yes <input type="checkbox"/> No |
| Within the area overlying a subsurface mine.
- Written confirmation or verification or map from the NM EMNRD-Mining and Mineral Division | <input type="checkbox"/> Yes <input type="checkbox"/> No |
| Within an unstable area.
- Engineering measures incorporated into the design; NM Bureau of Geology & Mineral Resources; USGS; NM Geological Society; Topographic map | <input type="checkbox"/> Yes <input type="checkbox"/> No |
| Within a 100-year floodplain.
- FEMA map | <input type="checkbox"/> Yes <input type="checkbox"/> No |

18.

On-Site Closure Plan Checklist: (19.15.17.13 NMAC) **Instructions:** Each of the following items must be attached to the closure plan. Please indicate, by a check mark in the box, that the documents are attached.

- Siting Criteria Compliance Demonstrations - based upon the appropriate requirements of 19.15.17.10 NMAC
- Proof of Surface Owner Notice - based upon the appropriate requirements of Subsection F of 19.15.17.13 NMAC
- Construction/Design Plan of Burial Trench (if applicable) based upon the appropriate requirements of 19.15.17.11 NMAC
- Construction/Design Plan of Temporary Pit (for in-place burial of a drying pad) - based upon the appropriate requirements of 19.15.17.11 NMAC
- Protocols and Procedures - based upon the appropriate requirements of 19.15.17.13 NMAC
- Confirmation Sampling Plan (if applicable) - based upon the appropriate requirements of Subsection F of 19.15.17.13 NMAC
- Waste Material Sampling Plan - based upon the appropriate requirements of Subsection F of 19.15.17.13 NMAC
- Disposal Facility Name and Permit Number (for liquids, drilling fluids and drill cuttings or in case on-site closure standards cannot be achieved)
- Soil Cover Design - based upon the appropriate requirements of Subsection H of 19.15.17.13 NMAC
- Re-vegetation Plan - based upon the appropriate requirements of Subsection I of 19.15.17.13 NMAC
- Site Reclamation Plan - based upon the appropriate requirements of Subsection G of 19.15.17.13 NMAC

19.

Operator Application Certification:

I hereby certify that the information submitted with this application is true, accurate and complete to the best of my knowledge and belief.

Name (Print): _____ Title: _____

Signature: _____ Date: _____

e-mail address: _____ Telephone: _____

20.

OCD Approval: Permit Application (including closure plan) Closure Plan (only) OCD Conditions (see attachment)

OCD Representative Signature: _____ **Approval Date:** _____

Title: _____ **OCD Permit Number:** _____

21.

Closure Report (required within 60 days of closure completion): Subsection K of 19.15.17.13 NMAC

Instructions: Operators are required to obtain an approved closure plan prior to implementing any closure activities and submitting the closure report. The closure report is required to be submitted to the division within 60 days of the completion of the closure activities. Please do not complete this section of the form until an approved closure plan has been obtained and the closure activities have been completed.

Closure Completion Date: 11Jun09

22.

Closure Method:

Waste Excavation and Removal On-Site Closure Method Alternative Closure Method Waste Removal (Closed-loop systems only)
 If different from approved plan, please explain.

23.

Closure Report Regarding Waste Removal Closure For Closed-loop Systems That Utilize Above Ground Steel Tanks or Haul-off Bins Only:

Instructions: Please identify the facility or facilities for where the liquids, drilling fluids and drill cuttings were disposed. Use attachment if more than two facilities were utilized.

Disposal Facility Name: _____ Disposal Facility Permit Number: _____

Disposal Facility Name: _____ Disposal Facility Permit Number: _____

Were the closed-loop system operations and associated activities performed on or in areas that *will not* be used for future service and operations?

Yes (If yes, please demonstrate compliance to the items below) No

Required for impacted areas which will not be used for future service and operations:

- Site Reclamation (Photo Documentation)
- Soil Backfilling and Cover Installation
- Re-vegetation Application Rates and Seeding Technique

24.

Closure Report Attachment Checklist: *Instructions: Each of the following items must be attached to the closure report. Please indicate, by a check mark in the box, that the documents are attached.*

- Proof of Closure Notice (surface owner and division)
- Proof of Deed Notice (required for on-site closure)
- Plot Plan (for on-site closures and temporary pits)
- Confirmation Sampling Analytical Results (if applicable)
- Waste Material Sampling Analytical Results (required for on-site closure)
- Disposal Facility Name and Permit Number
- Soil Backfilling and Cover Installation
- Re-vegetation Application Rates and Seeding Technique
- Site Reclamation (Photo Documentation)

On-site Closure Location: Latitude _____ Longitude _____ NAD: 1927 1983

25.

Operator Closure Certification:

I hereby certify that the information and attachments submitted with this closure report is true, accurate and complete to the best of my knowledge and belief. I also certify that the closure complies with all applicable closure requirements and conditions specified in the approved closure plan.

Name (Print): Rick Rickman Title: HSE

Signature: *Rick Rickman* Date: *6-19-09*

e-mail address: rdrickman@forestoil.com Telephone: 575 369 6176 cell

Accepted for record
NMOCD

JUL 08 2009

Forest Oil Corporation

Pit Closure Summary

JUL - 7 2009

Lea D #1

API 30-015-05411

UL. B, Sec. 26, T17S, R31E

Eddy County, NM

GPS N32 48.673 W103 50.292

Start date: 1Jun09

Finish date: 18Jun09

Prepared By: Vernon K. Black

Environmental Technician

Hungry Horse Environmental, LLC

PO Box 1058

Hobbs, NM 88240

(575)-393-3386



Table of Contents

1.0 Introduction	pg. 1
2.0 Area Description	pg. 1
3.0 Pit Closure Process	pg. 1
Diagram of Pit/Location Area	pg. 2

Attachments

- Attachment 1 – Overhead View
- Attachment 2 – Lab Analytical & Chain of Custody
- Attachment 3 – One call
- Attachment 4 – Photos of Progress
- Attachment 5 – Proof of Closure Notice
- Attachment 6 – Plot Plan
- Attachment 7 – C 144 w/Closure Plan
- Attachment 8 – C 144 Final
- Attachment 9 – C141 Initial & Final Report

1.0 Introduction

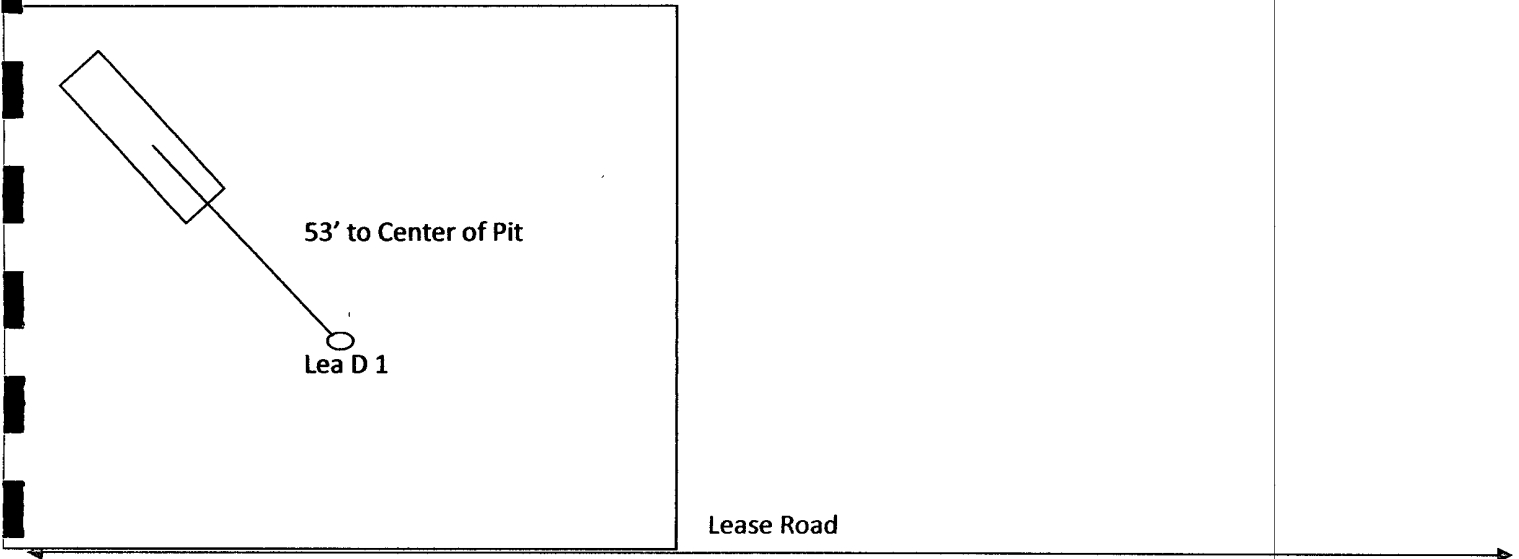
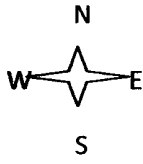
This report addresses the pit (work over) closure at Forest Oil Corporation's Lea D 1 injection well. Analytical results, photos of the project, an overhead map, and a general scope of the work conducted are included in this document as attachments. The project manager for Hungry Horse Environmental Services was Vernon K. Black.

2.0 Area Description

This geographical area is primarily caliche/caliche rock base covered with sand. Vegetation present in this area is mesquite, yucca plants, and a variety of range grass and weeds. The depth to the ground water is >200' based on the Eddy County Depth to Ground Water Map. There are no known water wells or surface bodies of water within a half of a mile of this location. This location is in rural Eddy County, NM approximately five miles west of Maljamar south of Highway 82.

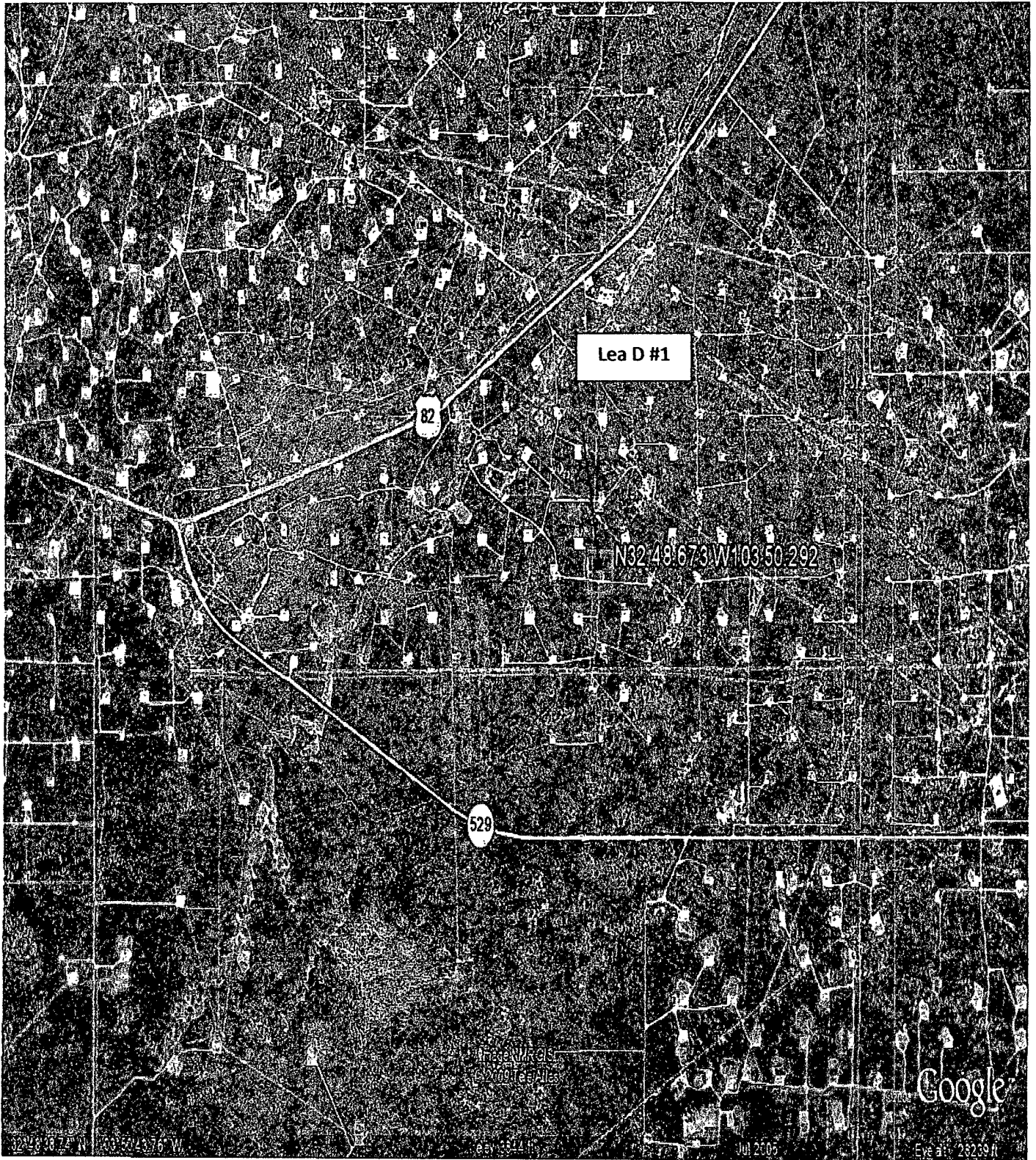
3.0 Pit Closure Process

This pit closure was accomplished using the Waste Excavation and Removal Process. The work over pit was 18'L x 10'W X 4'D and was lined with a synthetic liner. The pit contents, along with the liner, and two feet of material from underneath the liner were excavated and removed. All material removed was disposed of at CRI (NM OCD Order R9166). A five-point composite soil sample was obtained from the pit and taken to Cardinal Labs for analysis. Lab results indicated that chlorides, Benzene, and BTEX were all well below the limits set forth by NM OCD. However, TPH and GRO/DRO levels were slightly elevated. Further excavation was performed to a depth of 11'BGS and another composite sample was obtained and analyzed. Lab results indicated that the TPD and GRO/DRO were well below the limits set forth by NM OCD. Mike Bratcher, NM OCD Dist II, was notified of the results and advised that backfilling could commence. The final depth of the excavation was eleven feet. The excavated area was backfilled using clean material from a nearby source and contoured to match the existing grade of the location. All work was conducted on the existing location and no re-seeding was required.



Note: Drawing is not to scale

Attachment 1



Lea D #1

82

N32.48.673 W 103.50.292

529

Google

Images, Maps, etc.
© 2007 Google

Jul 21, 05

Eye at: 26239 ft

32.48.38.74 N 103.50.43.76 W

Attachment 2



PHONE (575) 393-2326 • 101 E. MARLAND • HOBBS, NM 88240

ANALYTICAL RESULTS FOR
 HUNGRY HORSE ENVIRONMENTAL SERVICES
 ATTN. VERNON K. BLACK
 P.O. BOX 1058
 HOBBS, NM 88241
 FAX TO: (575) 391-4585

Receiving Date: 06/01/09
 Reporting Date: 06/05/09
 Project Owner: FOREST OIL
 Project Name: LEA O #1
 Project Location: EDDY COUNTY, NM

Sampling Date: 06/01/09
 Sample Type: SOIL
 Sample Condition: COOL & INTACT @ 6°C
 Sample Received By: ML
 Analyzed By: AB/ZL

LAB NO.	SAMPLE ID	GRO (C ₆ -C ₁₀) (mg/kg)	DRO (>C ₁₀ -C ₂₈) (mg/kg)	BENZENE (mg/kg)	TOLUENE (mg/kg)	ETHYL BENZENE (mg/kg)	TOTAL XYLENES (mg/kg)	Cl ⁻ (mg/kg)
	ANALYSIS DATE:	06/03/09	06/03/09	06/02/09	06/02/09	06/02/09	06/02/09	06/03/09
	H17531-1 5PT COMPOSITE 7' BGS WORKOVER PIT	<10.0	960	<0.050	<0.050	<0.050	<0.300	32
	Quality Control	486	453	0.059	0.048	0.043	0.129	490
	True Value QC	500	500	0.050	0.050	0.050	0.150	500
	% Recovery	97.2	90.6	118	96.0	88.0	86.0	98.0
	Relative Percent Difference	2.5	0.6	19.7	4.2	4.3	3.6	2.0

METHODS: TPH GRO & DRO - EPA SW-846 8015 M; BTEX - SW-846 8021B; Cl⁻: Std. Methods 4500-Cl-B
 *Analysis performed on a 1:4 w/v aqueous extract. Reported on wet weight.
 TPH GRO/DRO and Chloride are not NELAP accredited.

TEXAS NELAP ACCREDITATION T104704398-08-TX FOR BENZENE, TOLUENE, ETHYL BENZENE,
 AND TOTAL XYLENES

Lab Director

Date

H17531 TBCL HHE

PLEASE NOTE: Liability and Damages. Cardinal's liability and client's exclusive remedy for any claim arising, whether based in contract or tort, shall be limited to the amount paid by client for analyses. All claims, including those for negligence and any other cause whatsoever shall be deemed waived unless made in writing and received by Cardinal within thirty (30) days after completion of the applicable service. In no event shall Cardinal be liable for incidental or consequential damages, including, without limitation, business interruptions, loss of use, or loss of profits incurred by client, its subsidiaries, affiliates or successors arising out of or related to the performance of services hereunder by Cardinal, regardless of whether such claim is based upon any of the above-stated reasons or otherwise. Results relate only to the samples identified above. This report shall not be reproduced except in full with written approval of Cardinal Laboratories.



PHONE (575) 393-2328 • 101 E MARLAND • HOBBS, NM 88240

ANALYTICAL RESULTS FOR
HUNGRY HORSE ENVIRONMENTAL SERVICES
ATTN: VERNON K. BLACK
P O. BOX 1058
HOBBS, NM 88241
FAX TO: (575) 391-4585

Receiving Date: 06/01/09
Reporting Date: 06/08/09
Project Owner: FOREST OIL
Project Name: LEA O #1
Project Location: EDDY COUNTY, NM

Sampling Date: 06/01/09
Sample Type: SOIL
Sample Condition: COOL & INTACT @ 6°C
Sample Received By: ML
Analyzed By: AB

LAB NUMBER SAMPLE ID
418.1
TOTAL
TPH
(mg/kg)

ANALYSIS DATE	06/08/09
H17531-1 5PT COMPOSITE 7' BGS WORKOVER PIT	5.280
Quality Control	321
True Value QC	300
% Recovery	107
Relative Percent Difference	2.9

METHODS: EPA 418.1 Reported on wet weight Analyte not
NELAP accredited.

Chemist

Date

H17526 THROUGH H17534 418 1 HHE

PLEASE NOTE Liability and Damages: Cardinal's liability and client's exclusive remedy for any claim arising whether based in contract or tort shall be limited to the amount paid by client for analyses. All claims including those for negligence and any other cause whatsoever shall be deemed waived unless made in writing and received by Cardinal within thirty (30) days after completion of the applicable service. In no event shall Cardinal be liable for incidental or consequential damages, including without limitation business interruptions, loss of use, or loss of profits incurred by client, its subsidiaries, affiliates or successors arising out of or related to the performance of services hereunder by Cardinal regardless of whether such claim is based upon any of the above-stated reasons or otherwise. Results relate only to the samples identified above. This report shall not be reproduced except in full with written approval of Cardinal Laboratories.



CARDINAL LABORATORIES

101 East Marland, Hobbs, NM 88240
(875) 393-2328 Fax (875) 393-2478

Page ___ of ___

Company Name: Hungry Horse Environmental Services		BILL TO			ANALYSIS REQUEST														
Project Manager: Vernon K. Black		P.O. #:																	
Address: PO Box 1058		Company: SAME																	
City: Hobbs State: NM Zip: 88241		ATTN:																	
Phone #: 575-393-3386 Fax #: 575-391-4585		Address:																	
Project #: Project Owner: Forestal Corp		City:																	
Project Name: Lead Htl		State: Zip:																	
Project Location: Eddy County NM		Phone #:																	
Sampler Name: Vernon K. Black		Fax #:																	
FOR LAB USE ONLY	Lab I.D.	Sample I.D.	MATRIX	PRESERV	SAMPLING														
	H153H1	Work Over Pit SPT Composite 7 lbs	GROUNDWATER WASTEWATER SOIL OIL SLUDGE OTHER	ACID/BASE ICE / COOL OTHER	DATE 1 Jun	TIME 1100	Chlorides	TPH	Geo/Org	BTEX									
			X	X			X	X	X	X									

ALERT NOTE: Labby and Gemg's Cardinals today and clients outside remedy for any claim arising whether based in contract or tort, shall be limited to the amount paid by the client for the analysis. All claims arising from negligence and any other cause shall be deemed waived unless made in writing and received by Cardinal within 30 days of completion of the applicable service. In no event shall Cardinal be liable for incidental or consequential damages, including without limitation, business interruption, loss of use, or loss of profits incurred by client, its subsidiaries, affiliates or successors arising out of or related to the performance of services rendered by Cardinal. Cardinal's liability shall not exceed the amount of the client's payment for the analysis.

Terms and Conditions: Labby will be charged on all accounts more than 10 days past due at the rate of 24% per annum less the original date of invoice, and all costs of collection, including attorney's fees.

Sampler Relinquished:	Date:	Received By:	Phone Result:	<input type="checkbox"/> No	Add'l Phone #:
	Time:		Fax Result:	<input type="checkbox"/> No	Add'l Fax #:
Relinquished By:	Date: 1 Jun	Received By:	REMARKS:		
	Time: 1000				
Delivered By: (Circle One)	Temp:	Sample Condition	CHECKED BY:		
Sampler - UPS - Bus - Other:	60°	Cool Intact	Initials: VAB		
		<input checked="" type="checkbox"/> Yes <input type="checkbox"/> No			

† Cardinal cannot accept verbal changes. Please fax written changes to 875-393-2478.

#26



ANALYTICAL RESULTS FOR
 HUNGRY HORSE ENVIRONMENTAL SERVICES
 ATTN. VERNON K. BLACK
 P.O. BOX 1058
 HOBBS, NM 88241
 FAX TO: (575) 391-4585

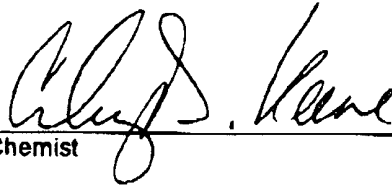
Receiving Date: 06/10/09
 Reporting Date: 06/12/09
 Project Owner: FOREST OIL CORP
 Project Name: LEA D #1
 Project Location: EDDY COUNTY, NM

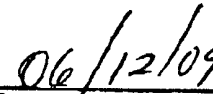
Sampling Date: 06/10/09
 Sample Type: SOIL
 Sample Condition: INTACT @ 13.5°C
 Sample Received By: ML
 Analyzed By: AB

LAB NUMBER	SAMPLE ID	418.1		
		GRO (C ₆ -C ₁₀) (mg/kg)	DRO (>C ₁₀ -C ₂₈) (mg/kg)	TOTAL TPH (mg/kg)

ANALYSIS DATE	06/08/09	06/06/09	06/11/09
H17603-1 11'BGS WORKOVER PIT	<10.0	<10.0	<100
Quality Control	595	599	310
True Value QC	500	500	300
% Recovery	119	120	103
Relative Percent Difference	0.8	6.2	1.5

METHODS: TPH GRO & DRO: EPA SW-846 8015 M; EPA 418.1
 Reported on wet weight.


 Chemist


 Date

H17603 TPH2 HHE

PLEASE NOTE Liability and Damages. Cardinal's liability and client's exclusive remedy for any claim arising, whether based in contract or tort, shall be limited to the amount paid by client for analyses. All claims, including those for negligence and any other cause whatsoever shall be deemed waived unless made in writing and received by Cardinal within thirty (30) days after completion of the applicable service. In no event shall Cardinal be liable for incidental or consequential damages including, without limitation, business interruptions, loss of use or loss of profits incurred by client, its subsidiaries, affiliates or successors arising out of or related to the performance of services hereunder by Cardinal, regardless of whether such claim is based upon any of the above-stated reasons or otherwise. Results relate only to the samples identified above. This report shall not be reproduced except in full with written approval of Cardinal Laboratories.



CARDINAL LABORATORIES

101 East Marland, Hobbs, NM 88240

(878) 393-2326 Fax (878) 393-2476

Page ___ of ___

Company Name: Hungry Horse Environmental Services Project Manager: Vernon K. Black Address: P.O. Box 1058 City: Hobbs State: NM Zip: 88241 Phone #: 575-393-3386 Fax #: 575-391-4585 Project #: Project Owner: Forest O.L. Corp Project Name: Lea O #1 Project Location: Eddy County NM Sampler Name: Vernon K. Black		BILL TO P.O. #: Company: SAME Attn: Address: City: State: Zip: Phone #: Fax #:		ANALYSIS REQUEST											
FOR LAB USE ONLY Lab I.D. 1176031 Sample I.D. Workover pit 11' B65		1 G/RAB OR 10 JUMP # CONTAINERS 6	MATRIX GROUNDWATER WASTEWATER SOIL OIL SLUDGE OTHER	PRESERV ACIDBASE ICE / COOL OTHER	SAMPLING DATE 1400 TIME 10 June	TPH G60/Dec									

PLEASE NOTE: Liability and damages. Cardinal's liability and shall's exclusive remedy for any claim arising in other states to be stated or filed, shall be limited to the amount paid by the client for the services. All claims, including those for negligence and any other claim whatsoever, shall be deemed waived, time made in writing and received by Cardinal within 30 days after completion of the applicable service. In no event shall Cardinal be liable for incidental or consequential damages, including without limitation, business interruption, loss of use, or loss of profits incurred by client, its subsidiaries, affiliates or licensees as a result of or related to the performance of services rendered by Cardinal. Cardinal's liability shall be limited to the amount paid by the client for the applicable services.

Terms and conditions of service will be charged on all accounts more than 30 days past due at the rate of 2% per annum from the original date of invoice, and all costs of collection, including attorney's fees.

Sampler Relinquished: Date: Received By: Time:	Phone Result: <input type="checkbox"/> No Add'l Phone #: Fax Result: <input type="checkbox"/> No Add'l Fax #: REMARKS:
Relinquished By: <i>[Signature]</i> Delivered By: (Circle One) Sampler - UPS - Bus - Other:	Date: 12/20/09 Received By: <i>[Signature]</i> Time: 1545 Temp: 13.5°C Sample Condition: Cool Intact CHECKED BY: <i>[Signature]</i> <input type="checkbox"/> Yes <input checked="" type="checkbox"/> No

† Cardinal cannot accept verbal changes. Please fax written changes to 878-393-2476.

* cooling process had begun

Attachment 3

NEW MEXICO ONE CALL
Locate Request Confirmation

Ticket #:2009220345 Reason Code:STANDARD LOCATE
Work to Begin Date: 05/28/2009 Time: 08:10:00 AM

CALLER INFORMATION

SHANON RUSK Excavator Type:CONTRACTOR
HUNGRY HORSE LLC Tel.:(575)631-0983

DIG LOCATION

City:RURAL EDDY
Subdivision:
Address : To:
Street : LEA D #1
Nearest Intersecting Street :
Second Intersecting Street :

Additional Dig Information:
SOIL REMEDIATION
FROM MALJAMAR W ON HWY 82 FOR 5.3- S TO A 'Y'- R
0.6MI- SE 0.3MI TO LOCATION
SPOT 200FT RADIUS AROUND WELL

Remarks:

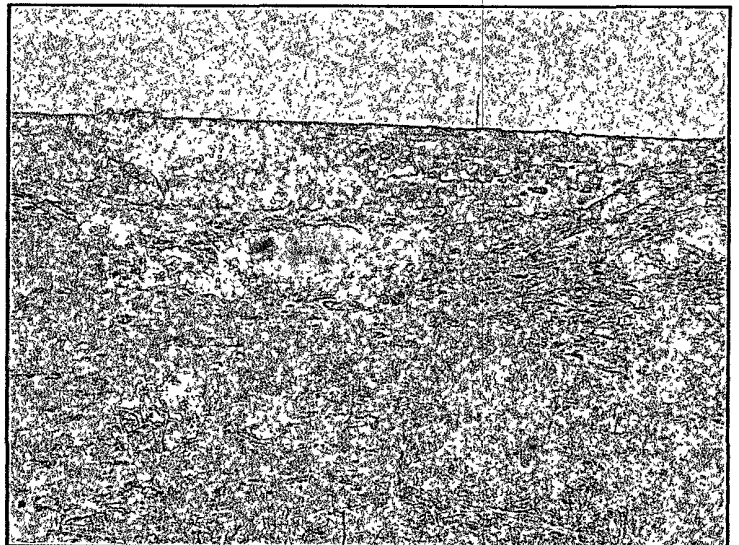
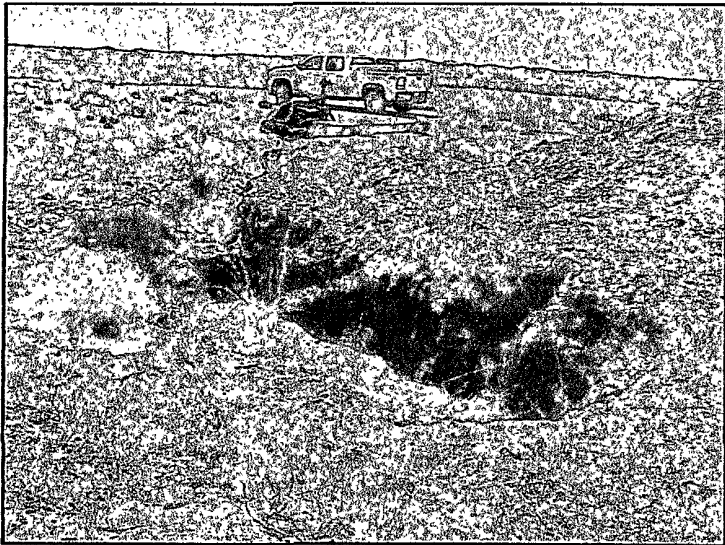
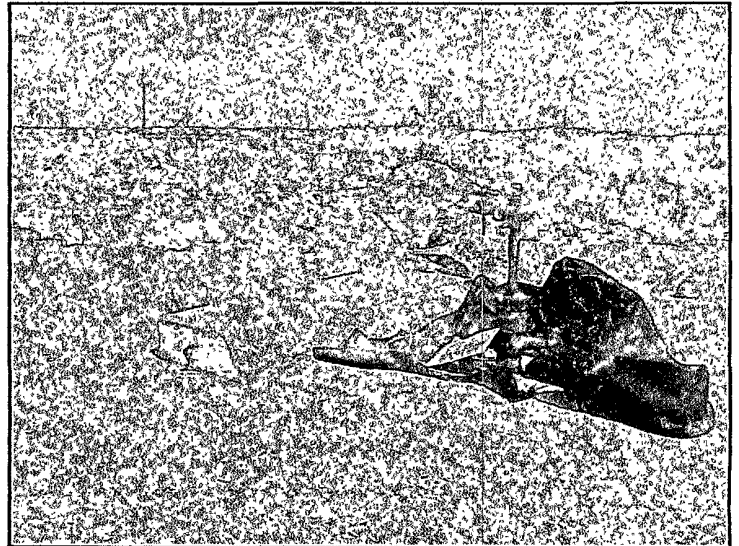
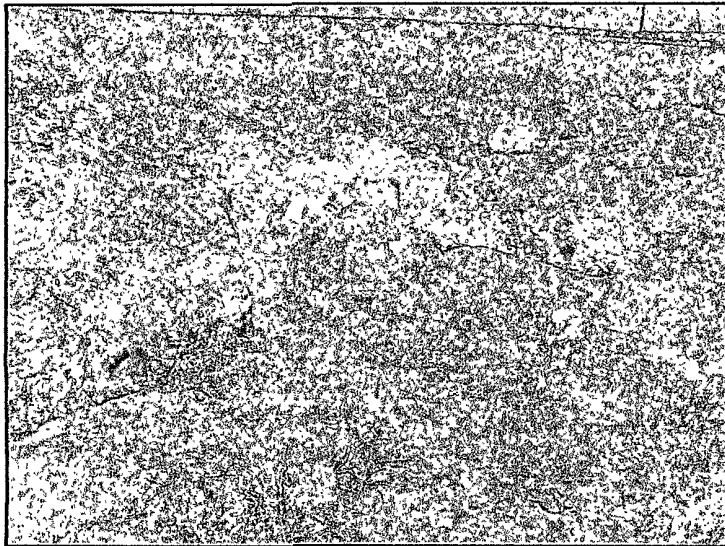
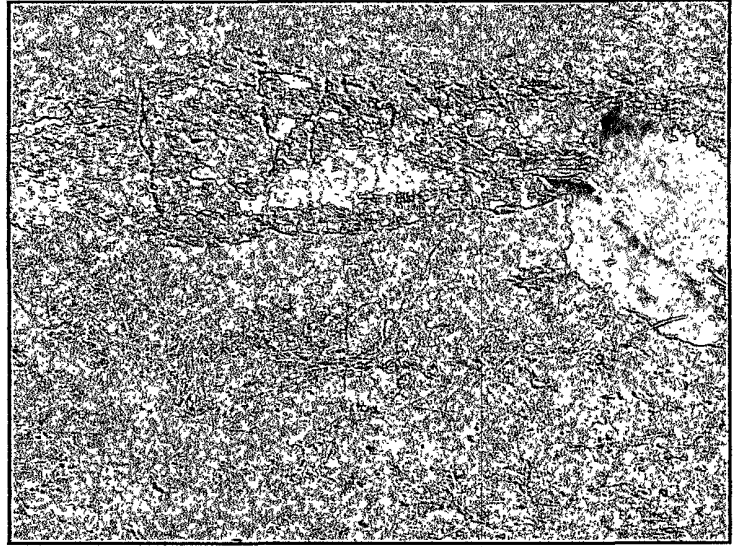
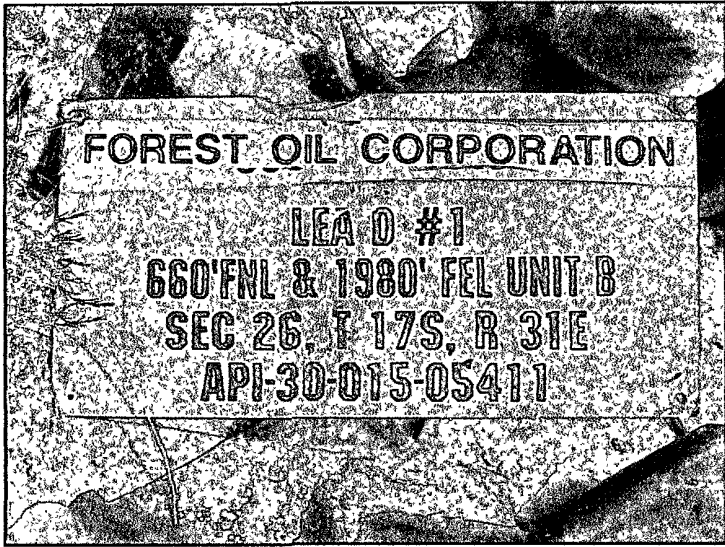
Township: 17S Range: 31E Section 1/4: 26 NE
Type of Work: OIL/GAS-PIPELINE CONSTRUCTION

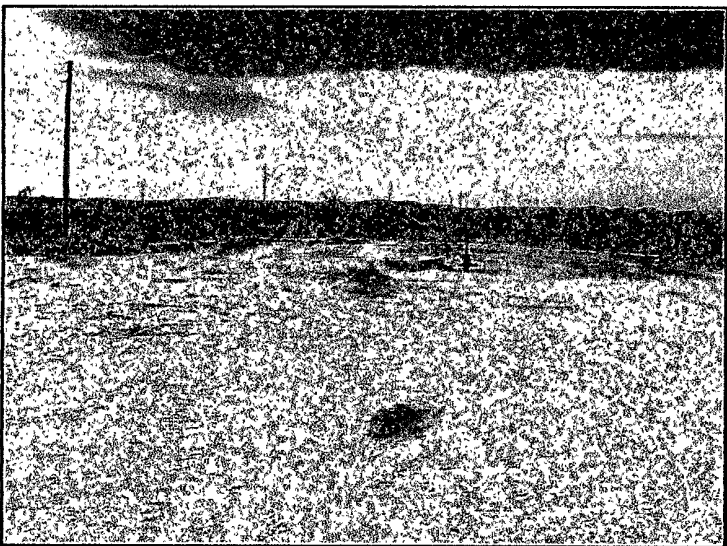
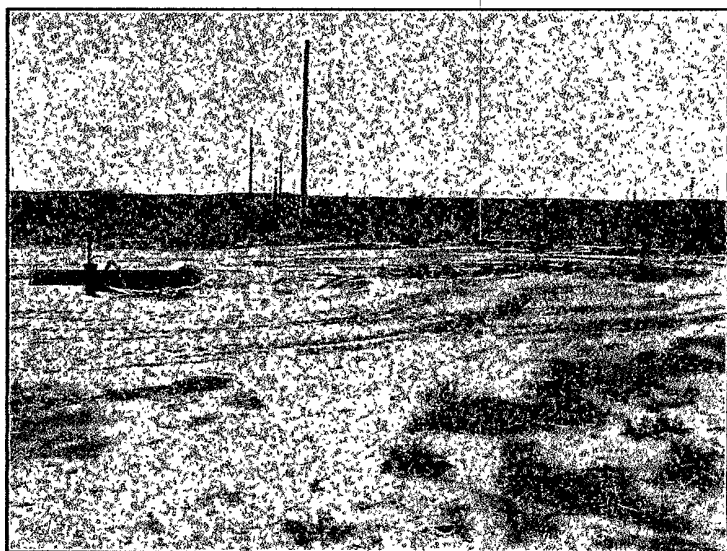
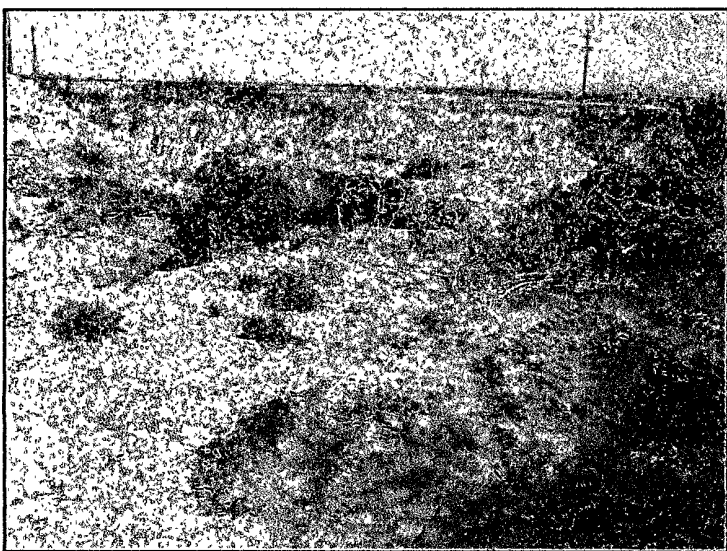
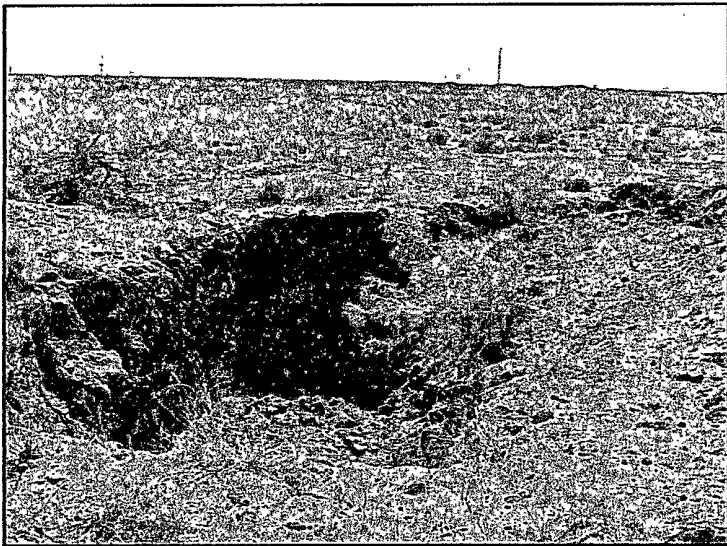
The following utility owners have been notified of
your proposed excavation site:
CONOCO-PHILLIPS & WESTTEX 66 PIPELINE
HOLLY ENERGY PARTNERS, L.P.
PLAINS PIPELINE - HOBBS
FRONTIER FIELD SERVICES,LLC
NEW MEXICO GAS COMPANY - CARLSBAD TRANSMISSION
DCP MIDSTREAM - LINUM

IMPORTANT CONFIRMATION NOTICE

Your fax request has been received and processed. It is your
responsibility to review the information provided on this faxback
confirmation ticket and ensure it has been correctly interpreted from
your request. Notify us immediately of any corrections or errors.
Acceptance of this faxback confirmation ticket means you accept
responsibility for the accuracy of the information contained in the
ticket and you agree to indemnify New Mexico One Call Systems, Inc. of
all liability, claims, fees, or damages, including reasonable attorney
fees arising from or resulting from the use of the information provided
on this confirmation ticket.

Attachment 4





Attachment 5

HUNGRY HORSE, LLC
ENVIRONMENTAL SERVICES

Dirt Work * On-Site Remediation * Soil Testing * Excavation

18May09

To: Jim Amos, BLM Carlsbad Office
Reference: Pit Closures and Site Reclamation

Dear Mr. Amos,

As per our earlier phone conversation, Hungry Horse Environmental Services has been retained by Forest Oil Corporation to conduct pit closure and site reclamation work on several locations on BLM land. All work over pits will be closed using the waste excavation and removal process with one P&A'd well location being reclaimed in the process. All pit closure work will be done in accordance with 19.15.17.13 NMAC. Each affected area off the existing location will be returned to its natural state. Should you have any questions, please feel free to contact me at any time. The work to be conducted is at the listed well locations. All locations are in T17S, R31E.

Lea D1	30-015-05411
Lea D2	30-015-05412
Skelly Unit 83	30-015-05418
Skelly Unit 72	30-015-05372
Skelly Units 300	30-015-29452
Skelly Unit 106	30-015-20366
Skelly Unit 19	30-015-05155
Skelly Unit 110	30-015-20469
Skelly Unit 38	30-015-10770 (location to be reclaimed)

Thanks for your help,



Vernon K. Black
Hungry Horse Environmental Services

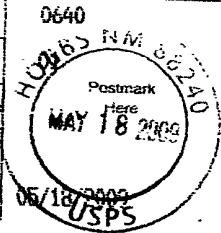
7007 0220 0001 1744 4357

U.S. Postal Service
CERTIFIED MAIL™ RECEIPT
(Domestic Mail Only. No Insurance Coverage Provided)

For delivery information, visit our website at www.usps.com

CARLSBAD NM 88220

Postage	\$	\$0.44
Certified Fee		\$2.80
Return Receipt Fee (Endorsement Required)		\$2.30
Restricted Delivery Fee (Endorsement Required)		\$0.00
Total Postage & Fees	\$	\$5.54



Send To Jim Amos Bureau/Carlsbad office
 Street, Apt. No.,
 or PO Box No. 402 E Greene St
 City, State, ZIP+4 Carlsbad, NM 88220

PS Form 3800, August 2005 Seal Reverse for Instructions

Attachment 6

The center of the closed pit is **53' northwest** of the well head, **GPS N32 48.673 W103 50.292**.

Reference the drawing on page #2

Attachment 7

Rec'd 5/20/09
NMOCD DIST II

District I
1625 N. Frouch Dr., Hobbs, NM 88240
District II
1301 W. Grand Avenue, Artesia, NM 88210
District III
1000 Rio Brazos Road, Aztec, NM 87410
District IV
1220 S. St. Francis Dr., Santa Fe, NM 87505

State of New Mexico
Energy Minerals and Natural Resources
Department
Oil Conservation Division
1220 South St. Francis Dr.
Santa Fe, NM 87505

For temporary pits, closed-loop systems, and below-grade tanks, submit to the appropriate NMOCD District Office.
For permanent pits and exceptions submit to the Santa Fe Environmental Bureau office and provide a copy to the appropriate NMOCD District Office.

Pit, Closed-Loop System, Below-Grade Tank, or
Proposed Alternative Method Permit or Closure Plan Application

- Type of action: Permit of a pit, closed-loop system, below-grade tank, or proposed alternative method
 Closure of a pit, closed-loop system, below-grade tank, or proposed alternative method
 Modification to an existing permit
X Closure plan only submitted for an existing permitted or non-permitted pit, closed-loop system, below-grade tank, or proposed alternative method

Instructions: Please submit one application (Form C-144) per individual pit, closed-loop system, below-grade tank or alternative request

Please be advised that approval of this request does not relieve the operator of liability should operations result in pollution of surface water, ground water or the environment. Nor does approval relieve the operator of its responsibility to comply with any other applicable governmental authority's rules, regulations or ordinances.

1
Operator: Forest Oil Corporation _____ OGRID #:8041 _____
Address: 3504 NW County Road Hobbs, NM 88240 _____
Facility or well name: Lea D1 _____
API Number: 30-015-05411 _____ OCD Permit Number: _____
U/L or Qtr/Qtr B _____ Section 26 _____ Township 17S _____ Range 31E _____ County: Eddy _____
Center of Proposed Design: Latitude _____ Longitude _____ NAD: 1927 1983
Surface Owner: X Federal State Private Tribal Trust or Indian Allotment

2
X Pit: Subsection F or G of 19.15.17.11 NMAC
Temporary: Drilling X Workover
 Permanent Emergency Cavitation P&A
X Lined Unlined Liner type: Thickness 20 _____ mil LLDPE HDPE PVC Other _____
X String-Reinforced
Liner Seams: Welded Factory Other _____ Volume: 50 _____ bbl Dimensions: L18' _____ x W10' _____ x D4' _____

3
 Closed-loop System: Subsection H of 19.15.17.11 NMAC
Type of Operation: P&A Drilling a new well Workover or Drilling (Applies to activities which require prior approval of a permit or notice of intent)
 Drying Pad Above Ground Steel Tanks Haul-off Bins Other _____
 Lined Unlined Liner type: Thickness _____ mil LLDPE HDPE PVC Other _____
Liner Seams: Welded Factory Other _____

4
 Below-grade tank: Subsection I of 19.15.17.11 NMAC
Volume: _____ bbl Type of fluid: _____
Tank Construction material: _____
 Secondary containment with leak detection Visible sidewalls, liner, 6-inch lift and automatic overflow shut-off
 Visible sidewalls and liner Visible sidewalls only Other _____
Liner type: Thickness _____ mil HDPE PVC Other _____

5
 Alternative Method:
Submittal of an exception request is required. Exceptions must be submitted to the Santa Fe Environmental Bureau office for consideration of approval.

6. Fencing: Subsection D of 19.15.17.11 NMAC (*Applies to permanent pits, temporary pits, and below-grade tanks*)

- Chain link, six feet in height, two strands of barbed wire at top (*Required if located within 1000 feet of a permanent residence, school, hospital, institution or church*)
- Four foot height, four strands of barbed wire evenly spaced between one and four feet
- Alternate. Please specify _____

7. Netting: Subsection E of 19.15.17.11 NMAC (*Applies to permanent pits and permanent open top tanks*)

- Screen Netting Other _____
- Monthly inspections (If netting or screening is not physically feasible)

8. Signs: Subsection C of 19.15.17.11 NMAC

- 12"x 24", 2" lettering, providing Operator's name, site location, and emergency telephone numbers
- Signed in compliance with 19.15.3.103 NMAC

9. Administrative Approvals and Exceptions:

Justifications and/or demonstrations of equivalency are required. Please refer to 19.15.17 NMAC for guidance.

Please check a box if one or more of the following is requested, if not leave blank:

- Administrative approval(s): Requests must be submitted to the appropriate division district or the Santa Fe Environmental Bureau office for consideration of approval.
- Exception(s): Requests must be submitted to the Santa Fe Environmental Bureau office for consideration of approval.

10. Siting Criteria (regarding permitting): 19.15.17.10 NMAC

Instructions: The applicant must demonstrate compliance for each siting criteria below in the application. Recommendations of acceptable source material are provided below. Requests regarding changes to certain siting criteria may require administrative approval from the appropriate district office or may be considered an exception which must be submitted to the Santa Fe Environmental Bureau office for consideration of approval. Applicant must attach justification for request. Please refer to 19.15.17.10 NMAC for guidance. Siting criteria does not apply to drying pads or above-grade tanks associated with a closed-loop system.

- Ground water is less than 50 feet below the bottom of the temporary pit, permanent pit, or below-grade tank.
 - NM Office of the State Engineer - iWATERS database search; USGS; Data obtained from nearby wells Yes No
- Within 300 feet of a continuously flowing watercourse, or 200 feet of any other significant watercourse or lakebed, sinkhole, or playa lake (measured from the ordinary high-water mark).
 - Topographic map; Visual inspection (certification) of the proposed site Yes No
- Within 300 feet from a permanent residence, school, hospital, institution, or church in existence at the time of initial application. (*Applies to temporary, emergency, or cavitation pits and below-grade tanks*)
 - Visual inspection (certification) of the proposed site; Aerial photo; Satellite image Yes No NA
- Within 1000 feet from a permanent residence, school, hospital, institution, or church in existence at the time of initial application. (*Applies to permanent pits*)
 - Visual inspection (certification) of the proposed site; Aerial photo; Satellite image Yes No NA
- Within 500 horizontal feet of a private, domestic fresh water well or spring that less than five households use for domestic or stock watering purposes, or within 1000 horizontal feet of any other fresh water well or spring, in existence at the time of initial application.
 - NM Office of the State Engineer - iWATERS database search; Visual inspection (certification) of the proposed site Yes No
- Within incorporated municipal boundaries or within a defined municipal fresh water well field covered under a municipal ordinance adopted pursuant to NMSA 1978, Section 3-27-3, as amended.
 - Written confirmation or verification from the municipality; Written approval obtained from the municipality Yes No
- Within 500 feet of a wetland.
 - US Fish and Wildlife Wetland Identification map; Topographic map; Visual inspection (certification) of the proposed site Yes No
- Within the area overlying a subsurface mine.
 - Written confirmation or verification or map from the NM EMNRD-Mining and Mineral Division Yes No
- Within an unstable area.
 - Engineering measures incorporated into the design; NM Bureau of Geology & Mineral Resources; USGS; NM Geological Society; Topographic map Yes No
- Within a 100-year floodplain.
 - FEMA map Yes No

11. **Temporary Pits, Emergency Pits, and Below-grade Tanks Permit Application Attachment Checklist:** Subsection B of 19.15.17.9 NMAC
Instructions: Each of the following items must be attached to the application. Please indicate, by a check mark in the box, that the documents are attached.

Hydrogeologic Report (Below-grade Tanks) - based upon the requirements of Paragraph (4) of Subsection B of 19.15.17.9 NMAC
 Hydrogeologic Data (Temporary and Emergency Pits) - based upon the requirements of Paragraph (2) of Subsection B of 19.15.17.9 NMAC
 Siting Criteria Compliance Demonstrations - based upon the appropriate requirements of 19.15.17.10 NMAC
 Design Plan - based upon the appropriate requirements of 19.15.17.11 NMAC
 Operating and Maintenance Plan - based upon the appropriate requirements of 19.15.17.12 NMAC
 Closure Plan (Please complete Boxes 14 through 18, if applicable) - based upon the appropriate requirements of Subsection C of 19.15.17.9 NMAC and 19.15.17.13 NMAC

Previously Approved Design (attach copy of design) API Number: _____ or Permit Number: _____

12. **Closed-loop Systems Permit Application Attachment Checklist:** Subsection B of 19.15.17.9 NMAC
Instructions: Each of the following items must be attached to the application. Please indicate, by a check mark in the box, that the documents are attached.

Geologic and Hydrogeologic Data (only for on-site closure) - based upon the requirements of Paragraph (3) of Subsection B of 19.15.17.9
 Siting Criteria Compliance Demonstrations (only for on-site closure) - based upon the appropriate requirements of 19.15.17.10 NMAC
 Design Plan - based upon the appropriate requirements of 19.15.17.11 NMAC
 Operating and Maintenance Plan - based upon the appropriate requirements of 19.15.17.12 NMAC
 Closure Plan (Please complete Boxes 14 through 18, if applicable) - based upon the appropriate requirements of Subsection C of 19.15.17.9 NMAC and 19.15.17.13 NMAC

Previously Approved Design (attach copy of design) API Number: _____
 Previously Approved Operating and Maintenance Plan API Number: _____ (Applies only to closed-loop system that use above ground steel tanks or haul-off bins and propose to implement waste removal for closure)

13. **Permanent Pits Permit Application Checklist:** Subsection B of 19.15.17.9 NMAC
Instructions: Each of the following items must be attached to the application. Please indicate, by a check mark in the box, that the documents are attached.

Hydrogeologic Report - based upon the requirements of Paragraph (1) of Subsection B of 19.15.17.9 NMAC
 Siting Criteria Compliance Demonstrations - based upon the appropriate requirements of 19.15.17.10 NMAC
 Climatological Factors Assessment
 Certified Engineering Design Plans - based upon the appropriate requirements of 19.15.17.11 NMAC
 Dike Protection and Structural Integrity Design - based upon the appropriate requirements of 19.15.17.11 NMAC
 Leak Detection Design - based upon the appropriate requirements of 19.15.17.11 NMAC
 Liner Specifications and Compatibility Assessment - based upon the appropriate requirements of 19.15.17.11 NMAC
 Quality Control/Quality Assurance Construction and Installation Plan
 Operating and Maintenance Plan - based upon the appropriate requirements of 19.15.17.12 NMAC
 Freeboard and Overtopping Prevention Plan - based upon the appropriate requirements of 19.15.17.11 NMAC
 Nuisance or Hazardous Odors, including H₂S, Prevention Plan
 Emergency Response Plan
 Oil Field Waste Stream Characterization
 Monitoring and Inspection Plan
 Erosion Control Plan
 Closure Plan - based upon the appropriate requirements of Subsection C of 19.15.17.9 NMAC and 19.15.17.13 NMAC

14. **Proposed Closure:** 19.15.17.13 NMAC
Instructions: Please complete the applicable boxes, Boxes 14 through 18, in regards to the proposed closure plan.

Type: Drilling Workover Emergency Cavitation P&A Permanent Pit Below-grade Tank Closed-loop System
 Alternative

Proposed Closure Method: Waste Excavation and Removal
 Waste Removal (Closed-loop systems only)
 On-site Closure Method (Only for temporary pits and closed-loop systems)
 In-place Burial On-site Trench Burial
 Alternative Closure Method (Exceptions must be submitted to the Santa Fe Environmental Bureau for consideration)

15. **Waste Excavation and Removal Closure Plan Checklist:** (19.15.17.13 NMAC) *Instructions: Each of the following items must be attached to the closure plan. Please indicate, by a check mark in the box, that the documents are attached.*

Protocols and Procedures - based upon the appropriate requirements of 19.15.17.13 NMAC
 Confirmation Sampling Plan (if applicable) - based upon the appropriate requirements of Subsection F of 19.15.17.13 NMAC
 Disposal Facility Name and Permit Number (for liquids, drilling fluids and drill cuttings)
 Soil Backfill and Cover Design Specifications - based upon the appropriate requirements of Subsection H of 19.15.17.13 NMAC
 Re-vegetation Plan - based upon the appropriate requirements of Subsection I of 19.15.17.13 NMAC
 Site Reclamation Plan - based upon the appropriate requirements of Subsection G of 19.15.17.13 NMAC

16. Waste Removal Closure For Closed-loop Systems That Utilize Above Ground Steel Tanks or Haul-off Bins Only: (19.15.17.13.D NMAC)
Instructions: Please identify the facility or facilities for the disposal of liquids, drilling fluids and drill cuttings. Use attachment if more than two facilities are required.

Disposal Facility Name: _____ Disposal Facility Permit Number: _____
 Disposal Facility Name: _____ Disposal Facility Permit Number: _____

Will any of the proposed closed-loop system operations and associated activities occur on or in areas that *will not* be used for future service and operations?
 Yes (If yes, please provide the information below) No

Required for impacted areas which will not be used for future service and operations:

Soil Backfill and Cover Design Specifications - based upon the appropriate requirements of Subsection H of 19.15.17.13 NMAC
 Re-vegetation Plan - based upon the appropriate requirements of Subsection I of 19.15.17.13 NMAC
 Site Reclamation Plan - based upon the appropriate requirements of Subsection G of 19.15.17.13 NMAC

17. Siting Criteria (regarding on-site closure methods only): 19.15.17.10 NMAC
Instructions: Each siting criteria requires a demonstration of compliance in the closure plan. Recommendations of acceptable source material are provided below. Requests regarding changes to certain siting criteria may require administrative approval from the appropriate district office or may be considered an exception which must be submitted to the Santa Fe Environmental Bureau office for consideration of approval. Justifications and/or demonstrations of equivalency are required. Please refer to 19.15.17.10 NMAC for guidance.

Ground water is less than 50 feet below the bottom of the buried waste. - NM Office of the State Engineer - iWATERS database search; USGS; Data obtained from nearby wells	<input type="checkbox"/> Yes <input type="checkbox"/> No <input type="checkbox"/> NA
Ground water is between 50 and 100 feet below the bottom of the buried waste - NM Office of the State Engineer - iWATERS database search; USGS; Data obtained from nearby wells	<input type="checkbox"/> Yes <input type="checkbox"/> No <input type="checkbox"/> NA
Ground water is more than 100 feet below the bottom of the buried waste. - NM Office of the State Engineer - iWATERS database search; USGS; Data obtained from nearby wells	<input type="checkbox"/> Yes <input type="checkbox"/> No <input type="checkbox"/> NA
Within 300 feet of a continuously flowing watercourse, or 200 feet of any other significant watercourse or lakebed, sinkhole, or playa lake (measured from the ordinary high-water mark). - Topographic map; Visual inspection (certification) of the proposed site	<input type="checkbox"/> Yes <input type="checkbox"/> No
Within 300 feet from a permanent residence, school, hospital, institution, or church in existence at the time of initial application. - Visual inspection (certification) of the proposed site; Aerial photo; Satellite image	<input type="checkbox"/> Yes <input type="checkbox"/> No
Within 500 horizontal feet of a private, domestic fresh water well or spring that less than five households use for domestic or stock watering purposes, or within 1000 horizontal feet of any other fresh water well or spring, in existence at the time of initial application. - NM Office of the State Engineer - iWATERS database; Visual inspection (certification) of the proposed site	<input type="checkbox"/> Yes <input type="checkbox"/> No
Within incorporated municipal boundaries or within a defined municipal fresh water well field covered under a municipal ordinance adopted pursuant to NMSA 1978, Section 3-27-3, as amended. - Written confirmation or verification from the municipality; Written approval obtained from the municipality	<input type="checkbox"/> Yes <input type="checkbox"/> No
Within 500 feet of a wetland. - US Fish and Wildlife Wetland Identification map; Topographic map; Visual inspection (certification) of the proposed site	<input type="checkbox"/> Yes <input type="checkbox"/> No
Within the area overlying a subsurface mine. - Written confirmation or verification or map from the NM EMNRD-Mining and Mineral Division	<input type="checkbox"/> Yes <input type="checkbox"/> No
Within an unstable area. - Engineering measures incorporated into the design; NM Bureau of Geology & Mineral Resources; USGS; NM Geological Society; Topographic map	<input type="checkbox"/> Yes <input type="checkbox"/> No
Within a 100-year floodplain. - FEMA map	<input type="checkbox"/> Yes <input type="checkbox"/> No

18. On-Site Closure Plan Checklist: (19.15.17.13 NMAC) Instructions: Each of the following items must be attached to the closure plan. Please indicate, by a check mark in the box, that the documents are attached.

Siting Criteria Compliance Demonstrations - based upon the appropriate requirements of 19.15.17.10 NMAC
 Proof of Surface Owner Notice - based upon the appropriate requirements of Subsection F of 19.15.17.13 NMAC
 Construction/Design Plan of Burial Trench (if applicable) based upon the appropriate requirements of 19.15.17.11 NMAC
 Construction/Design Plan of Temporary Pit (for in-place burial of a drying pad) - based upon the appropriate requirements of 19.15.17.11 NMAC
 Protocols and Procedures - based upon the appropriate requirements of 19.15.17.13 NMAC
 Confirmation Sampling Plan (if applicable) - based upon the appropriate requirements of Subsection F of 19.15.17.13 NMAC
 Waste Material Sampling Plan - based upon the appropriate requirements of Subsection F of 19.15.17.13 NMAC
 Disposal Facility Name and Permit Number (for liquids, drilling fluids and drill cuttings or in case on-site closure standards cannot be achieved)
 Soil Cover Design - based upon the appropriate requirements of Subsection H of 19.15.17.13 NMAC
 Re-vegetation Plan - based upon the appropriate requirements of Subsection I of 19.15.17.13 NMAC
 Site Reclamation Plan - based upon the appropriate requirements of Subsection G of 19.15.17.13 NMAC

19. **Operator Application Certification:**

I hereby certify that the information submitted with this application is true, accurate and complete to the best of my knowledge and belief.

Name (Print): Rick Rickman Title: HSE

Signature: Rick Rickman Date: 19May09

e-mail address: rdrickman@forestoil.com Telephone: 575 369 6176

20. **OCD Approval:** Permit Application (including closure plan) Closure Plan (only) OCD Conditions (see attachment)

OCD Representative Signature: Signed By Mike Benjamin Approval Date: JUN 11 2009

Title: _____ OCD Permit Number: _____

21. **Closure Report (required within 60 days of closure completion):** Subsection K of 19.15.17.13 NMAC

Instructions: Operators are required to obtain an approved closure plan prior to implementing any closure activities and submitting the closure report. The closure report is required to be submitted to the division within 60 days of the completion of the closure activities. Please do not complete this section of the form until an approved closure plan has been obtained and the closure activities have been completed.

Closure Completion Date: _____

22. **Closure Method:**

- Waste Excavation and Removal On-Site Closure Method Alternative Closure Method Waste Removal (Closed-loop systems only)
- If different from approved plan, please explain.

23. **Closure Report Regarding Waste Removal Closure For Closed-loop Systems That Utilize Above Ground Steel Tanks or Haul-off Bins Only:**

Instructions: Please identify the facility or facilities for where the liquids, drilling fluids and drill cuttings were disposed. Use attachment if more than two facilities were utilized.

Disposal Facility Name: _____ Disposal Facility Permit Number: _____

Disposal Facility Name: _____ Disposal Facility Permit Number: _____

Were the closed-loop system operations and associated activities performed on or in areas that will not be used for future service and operations?
 Yes (If yes, please demonstrate compliance to the items below) No

Required for impacted areas which will not be used for future service and operations:

- Site Reclamation (Photo Documentation)
- Soil Backfilling and Cover Installation
- Re-vegetation Application Rates and Seeding Technique

24. **Closure Report Attachment Checklist:** *Instructions: Each of the following items must be attached to the closure report. Please indicate, by a check mark in the box, that the documents are attached.*

- Proof of Closure Notice (surface owner and division)
- Proof of Deed Notice (required for on-site closure)
- Plot Plan (for on-site closures and temporary pits)
- Confirmation Sampling Analytical Results (if applicable)
- Waste Material Sampling Analytical Results (required for on-site closure)
- Disposal Facility Name and Permit Number
- Soil Backfilling and Cover Installation
- Re-vegetation Application Rates and Seeding Technique
- Site Reclamation (Photo Documentation)

On-site Closure Location: Latitude _____ Longitude _____ NAD: 1927 1983

25. **Operator Closure Certification:**

I hereby certify that the information and attachments submitted with this closure report is true, accurate and complete to the best of my knowledge and belief. I also certify that the closure complies with all applicable closure requirements and conditions specified in the approved closure plan.

Name (Print): _____ Title: _____

Signature: _____ Date: _____

e-mail address: _____ Telephone: _____

New Mexico Energy, Minerals and Natural Resources Department

Bill Richardson
Governor

Joanna Prukop
Cabinet Secretary
Reese Fullerton
Deputy Cabinet Secretary

Mark Fesmire
Division Director
Oil Conservation Division



Conditions of approval for closure of a drilling or work over pit

Notify OCD District 2 office 48 hours prior to commencement of closure activities.

Notify OCD District 2 office 48 hours prior to obtaining samples where analyses of samples obtained are to be submitted to OCD.

Sampling requirements are listed in 19.15.17.13 [NMAC] (Pit Rule)

Final closure report is to be submitted to OCD not later than 60 days after completion of closure.

Surface restoration per OCD/BLM requirements. — N/A



**HUNGRY HORSE, LLC
ENVIRONMENTAL SERVICES**

Dirt Work * On-Site Remediation * Soil Testing * Excavation

18May09

TO: Mike Bratcher, NM OCD Dist 2
REFERENCE: Work Plan for Closure of a Temporary Pit

OPERATOR: Forest Oil Corporation
LOCATION: Lea D1
API: 30-015-05411
LEGALS: UL. B, Sec. 26, T17S, R31E
GPS: N32 48.673 W103 50.292
DEPTH to GROUND WATER: >200'

Protocols and Procedures: The closure of this work over pit will be accomplished by using the waste excavation and removal method. All contents of the pit to include the synthetic liner will be removed and disposed of at a division-approved facility. The pit will be excavated to a depth of 2' below the liner at which point soil sampling/analysis will be conducted to determine if a release has occurred. If it is determined that a release has occurred, an initial C 141 will be submitted and work will proceed until further soil analysis indicate the levels of contaminants have reached acceptable levels as per NM OCD guidelines.

Confirmation Sampling: A composite sample of the excavated area will be obtained and analyzed to determine the levels of Benzene, BTEX, TPH, GRO/DRO, and Chlorides. All analysis will be conducted using NM OCD approved analysis methods.

Disposal Facility: Controlled Recovery Inc (CRI)

Soil backfill and Cover Design Specifications: The excavated area will be backfilled to the existing grade of the location using the stockpiled material that came from the pit construction. Should additional material be required for back fill, it will be obtained from a near-by source.

Re-vegetation Plan: due to the affected area being on an active well location, no re-vegetation will be conducted.

Submitted By: Vernon K. Black, Hungry Horse Environmental Services

Signature:  (18 May 09)

Attachment 8

Attachment 9

District I
1625 N. French Dr., Hobbs, NM 88240
District II
1301 W. Grand Avenue, Artesia, NM 88210
District III
1000 Rio Brazos Road, Aztec, NM 87410
District IV
1220 S. St. Francis Dr., Santa Fe, NM 87505

State of New Mexico
Energy Minerals and Natural Resources

Oil Conservation Division
1220 South St. Francis Dr.
Santa Fe, NM 87505

Form C-141
Revised October 10, 2003

Submit 2 Copies to appropriate
District Office in accordance
with Rule 116 on back
side of form

Release Notification and Corrective Action

OPERATOR

X Initial Report Final Report

Name of Company Forest Oil Corporation	Contact Rick Rickman
Address 3504 NW County Road	Telephone No. 575 392 9797
Facility Name Lea D1	Facility Type Injection Well

Surface Owner Federal	Mineral Owner	Lease No. API 30-015-05411
-----------------------	---------------	----------------------------

LOCATION OF RELEASE

Unit Letter	Section	Township	Range	Feet from the	North/South Line	Feet from the	East/West Line	County
B	26	17S	31E					Eddy

Latitude _____ Longitude _____

NATURE OF RELEASE

Type of Release Hydrocarbons	Volume of Release Unknown	Volume Recovered Unknown
Source of Release Workover Pit	Date and Hour of Occurrence Unknown	Date and Hour of Discovery 1Jun09
Was Immediate Notice Given? <input type="checkbox"/> Yes X No <input type="checkbox"/> Not Required	If YES, To Whom? N/A	
By Whom? N/A	Date and Hour N/A	
Was a Watercourse Reached? <input type="checkbox"/> Yes X No	If YES, Volume Impacting the Watercourse.	

If a Watercourse was Impacted, Describe Fully.*
N/A

Describe Cause of Problem and Remedial Action Taken.*
The elevated levels of TPG and GRO/DRO were discovered during the sampling phase of the closure of the work over pit. The 5 point composite sample from the pit was obtained at a depth of 7' BGS. Further excavation will be conducted until a sample free of hydrocarbons is available.

Describe Area Affected and Cleanup Action Taken.*

I hereby certify that the information given above is true and complete to the best of my knowledge and understand that pursuant to NMOCD rules and regulations all operators are required to report and/or file certain release notifications and perform corrective actions for releases which may endanger public health or the environment. The acceptance of a C-141 report by the NMOCD marked as "Final Report" does not relieve the operator of liability should their operations have failed to adequately investigate and remediate contamination that pose a threat to ground water, surface water, human health or the environment. In addition, NMOCD acceptance of a C-141 report does not relieve the operator of responsibility for compliance with any other federal, state, or local laws and/or regulations.

Signature: <i>Rick Rickman</i>	OIL CONSERVATION DIVISION	
Printed Name: Rick Rickman	Approved by District Supervisor: <i>Mike Brannon</i>	
Title: HSE	Approval Date: JUL 08 2009	Expiration Date: N/A
E-mail Address: rdrickman@forestoil.com	Conditions of Approval: N/A	Attached <input type="checkbox"/>
Date: 8Jun09 Phone: 575 369 6176		

Attach Additional Sheets If Necessary

District I
1625 N. French Dr., Hobbs, NM 88240
District II
1301 W. Grand Avenue, Artesia, NM 88210
District III
1000 Rio Brazos Road, Aztec, NM 87410
District IV
1220 S. St. Francis Dr., Santa Fe, NM 87505

State of New Mexico
Energy Minerals and Natural Resources
Oil Conservation Division
1220 South St. Francis Dr.
Santa Fe, NM 87505

Form C-141
Revised October 10, 2003

Submit 2 Copies to appropriate
District Office in accordance
with Rule 116 on back
side of form

Release Notification and Corrective Action

OPERATOR

Initial Report Final Report

Name of Company Forest Oil Corporation	Contact Rick Rickman
Address 3504 NW County Road Hobbs, NM 88241	Telephone No. 575 392 9797
Facility Name Lea D1	Facility Type Injection Well

Surface Owner Federal	Mineral Owner	Lease No. API 30-015-05411
-----------------------	---------------	----------------------------

LOCATION OF RELEASE

Unit Letter	Section	Township	Range	Feet from the	North/South Line	Feet from the	East/West Line	County
B	26	17S	31E					Eddy

Latitude _____ Longitude _____

NATURE OF RELEASE

Type of Release Hydrocarbons	Volume of Release Unknown	Volume Recovered Unknown
Source of Release Work over Pit	Date and Hour of Occurrence Unknown	Date and Hour of Discovery 1Jun09
Was Immediate Notice Given? <input type="checkbox"/> Yes <input checked="" type="checkbox"/> No <input type="checkbox"/> Not Required	If YES, To Whom? N/A	
By Whom? N/A	Date and Hour N/A	
Was a Watercourse Reached? <input type="checkbox"/> Yes <input checked="" type="checkbox"/> No	If YES, Volume Impacting the Watercourse. N/A	

If a Watercourse was Impacted, Describe Fully.*
N/A

Describe Cause of Problem and Remedial Action Taken.*

Describe Area Affected and Cleanup Action Taken.*
The affected area was the directly below the work over pit. Hydrocarbons were detected at 7' BGS. Excavation continued to a depth of 11' BGS at which point another 5 point composite sample was obtained and analyzed. Lab results indicated TPH and GRO/DRO levels were well below the limits set forth by NM OCD. Closure of the pit was continued as per the approved work plan.

I hereby certify that the information given above is true and complete to the best of my knowledge and understand that pursuant to NMOCD rules and regulations all operators are required to report and/or file certain release notifications and perform corrective actions for releases which may endanger public health or the environment. The acceptance of a C-141 report by the NMOCD marked as "Final Report" does not relieve the operator of liability should their operations have failed to adequately investigate and remediate contamination that pose a threat to ground water, surface water, human health or the environment. In addition, NMOCD acceptance of a C-141 report does not relieve the operator of responsibility for compliance with any other federal, state, or local laws and/or regulations.

Signature: <i>Rick Rickman</i>	OIL CONSERVATION DIVISION	
Printed Name: Rick Rickman	Signed By <i>Mike Brannan</i> Approved by District Supervisor	
Title: HSE	Approval Date: JUL 08 2009	Expiration Date: N/A
E-mail Address: rdrickman@forestoil.com	Conditions of Approval: <i>n/a</i>	Attached <input type="checkbox"/>
Date: 16Jun09 Phone: 575 369 6176		

Attach Additional Sheets If Necessary