

OCD-ARTESIA

AUG 10 2009 15-09-330

Secretary's Potash

Potash
0719

UNITED STATES
DEPARTMENT OF THE INTERIOR
BUREAU OF LAND MANAGEMENT
APPLICATION FOR PERMIT TO DRILL OR REENTER

FORM APPROVED
OMB NO. 1004-0137
Expires: July 31, 2010

1a. Type of Work: <input checked="" type="checkbox"/> DRILL <input type="checkbox"/> REENTER		5. Lease Serial No. NM-99034 <i>BHL NM119754</i>
1b. Type of Well: <input checked="" type="checkbox"/> Oil Well <input type="checkbox"/> Gas Well <input type="checkbox"/> Other <input type="checkbox"/> Single Zone <input type="checkbox"/> Multiple Zone		6. If Indian, Allottee or Tribe Name N/A
2. Name of Operator Yates Petroleum Corporation 025575		7. If Unit or CA Agreement, Name and No. N/A
3a. Address 105 South Fourth Street, Artesia, NM 88210		8. Lease Name and Well No. Juniper BIP Federal #7H
3b. Phone No. (include area code) 575 505-748-1471		9. API Well No. 30-015-37212
4. Location of well (Report location clearly and in accordance with any State requirements. *) At surface 2310' FNL & 660' FWL, Ut. D^E At proposed prod. zone 1980' FNL & 330' FEL, Ut. A^H		10. Field and Pool, or Exploratory Wildcat Bone Spring
11. Sec., T., R., M., or Blk. And Survey or Area Section 4-T24S-R29E		12. County or Parish Eddy
13. State NM		14. Distance in miles and direction from the nearest town or post office* The well is about 8 miles east of Malaga, NM.
15. Distance from proposed* location to nearest property or lease line, ft (Also to nearest drlg unit line, if any) 330'	16. No. of acres in lease 878.94	17. Spacing Unit dedicated to this well S2N2 of Section 4-24S-29E
18. Distance from proposed location* to nearest well, drilling, completed, applied for, on this lease, ft	19. Proposed Depth 7890' VD; 11938'MD	20. BLM/ BIA Bond No. on file NATIONWIDE BOND #NMB000434
21. Elevations (Show whether DF, KDB, RT, GL, etc.) 3050 GL	22. Approximate date work will start* ASAP	23. Estimated duration

24. Attachments

The following, completed in accordance with the requirements of Onshore Oil and Gas Order No. 1 shall be attached to this form.

- | | |
|--|--|
| 1 Well plat certified by a registered surveyor. | 4 Bond to cover the operations unless covered by existing bond on file (see item 20 above) |
| 2 A Drilling Plan | 5 Operator certification |
| 3 A Surface Use Plan (if the location is on National Forest System Lands, the SUPO must be filed with the appropriate Forest Service Office) | 6 Such other site specific information and/ or plans as may be required by the BLM |

25. Signature <i>Cy Cowan</i>	Name (Printed/ Typed) Cy Cowan	Date 5/7/09
Title Land Regulatory Agent		
Approved By (Signature) /s/ Linda S.C. Rundell	Name (Printed/ Typed)	Date AUG 4 2009
Title STATE DIRECTOR		
Office NM STATE OFFICE		

Application approval does not warrant or certify that the applicant holds legal or equitable title to those rights in the subject lease which would entitle the applicant to operations thereon

Conditions of approval, if any, are attached.

APPROVAL FOR TWO YEARS

Title 18 U.S.C. Section 1001 and Title 43 U.S.C. Section 1212, make it a crime for any person knowingly and wilfully to make to any department or agency of the United States any false, fictitious or fraudulent statements or representations as to any matter within its jurisdiction.

* (Instructions on page 2)

Carlsbad Controlled Water Basin SEE ATTACHED FOR
CONDITIONS OF APPROVAL

Approval Subject to General Requirements
& Special Stipulations Attached

DISTRICT I
1825 N. French Dr., Hobbs, NM 88240
DISTRICT II
1301 W. Grand Avenue, Artesia, NM 88210
DISTRICT III
1000 Rio Brazos Rd., Aztec, NM 87410
DISTRICT IV
1220 S. St. Francis Dr., Santa Fe, NM 87505

State of New Mexico
Energy, Minerals and Natural Resources Department

Form C-102
Revised October 12, 2005

Submit to Appropriate District Office
State Lease - 4 Copies
Fee Lease - 3 Copies

OIL CONSERVATION DIVISION
1220 South St. Francis Dr.
Santa Fe, New Mexico 87505

☐ AMENDED REPORT

WELL LOCATION AND ACREAGE DEDICATION PLAT

API Number 30-015-37212	Pool Code	Pool Name Wildcat Bone Spring
Property Code 36237	Property Name JUNIPER "BIP" FEDERAL	Well Number 7H
OGRID No. 025575	Operator Name YATES PETROLEUM CORP.	Elevation 3050'

Surface Location

UL or lot No.	Section	Township	Range	Lot Idn	Feet from the	North/South line	Feet from the	East/West line	County
E	4	24 S	29 E		2310	NORTH	660	WEST	EDDY

Bottom Hole Location If Different From Surface

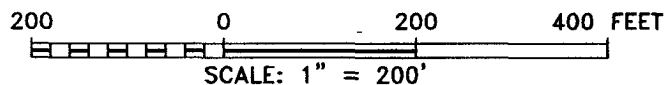
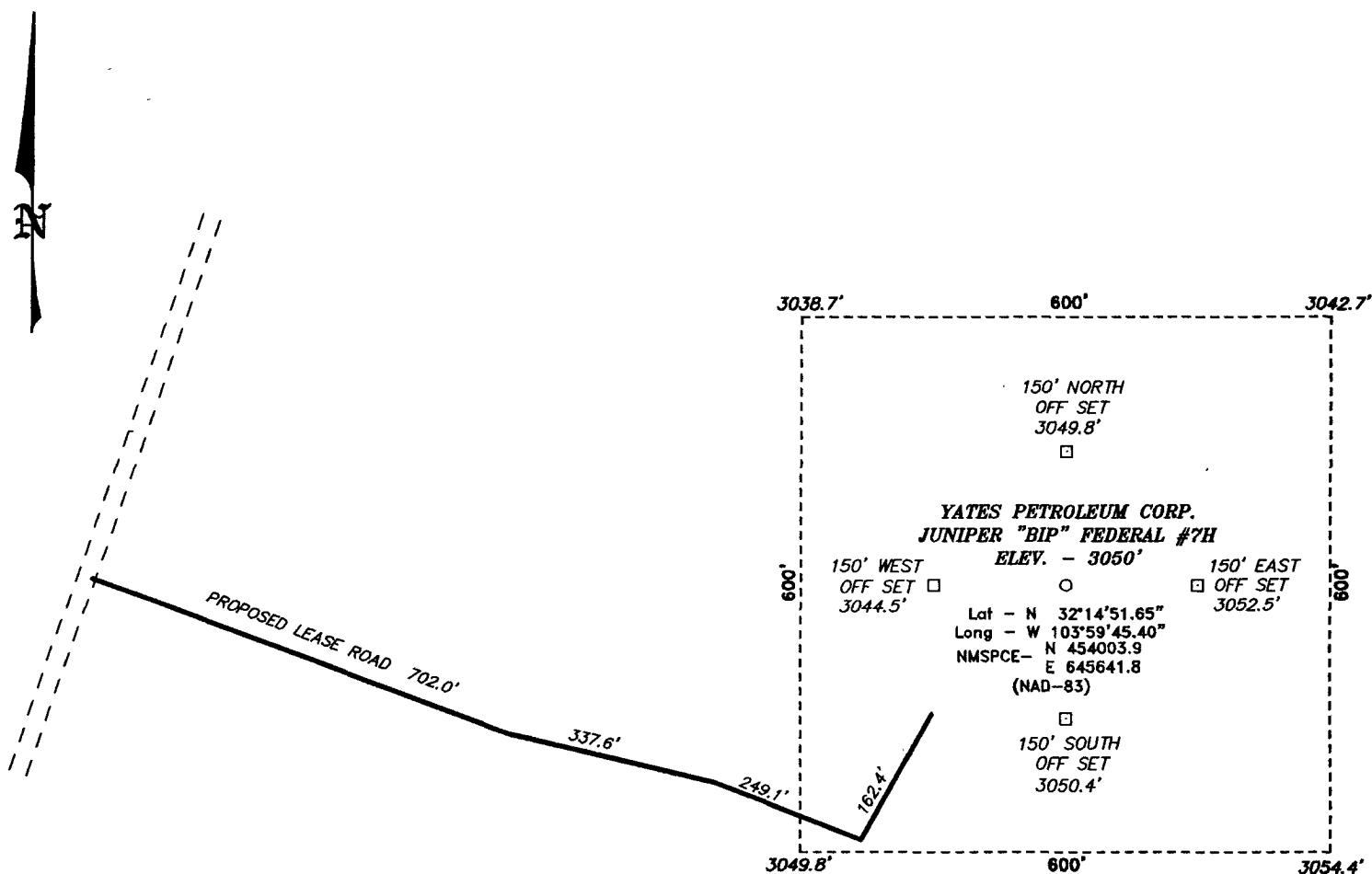
UL or lot No.	Section	Township	Range	Lot Idn	Feet from the	North/South line	Feet from the	East/West line	County
H	4	24 S	29 E		1980	NORTH	330	EAST	EDDY

Dedicated Acres	Joint or Infill	Consolidation Code	Order No.
160			

NO ALLOWABLE WILL BE ASSIGNED TO THIS COMPLETION UNTIL ALL INTERESTS HAVE BEEN CONSOLIDATED
OR A NON-STANDARD UNIT HAS BEEN APPROVED BY THE DIVISION

	<p>OPERATOR CERTIFICATION</p> <p>I hereby certify that the information contained herein is true and complete to the best of my knowledge and belief, and that this organization either owns a working interest or unleased mineral interest in the land including the proposed bottom hole location pursuant to a contract with an owner of such a mineral or working interest, or to a voluntary pooling agreement or a compulsory pooling order heretofore entered by the Division.</p> <p><i>Cy Cowan</i> 5/7/09 Signature Date</p> <p>Cy Cowan, Land Regulatory Printed Name Agent</p> <p>SURVEYOR CERTIFICATION</p> <p>I hereby certify that the well location shown on this plat was plotted from field notes of actual surveys made by me or under my supervision, and that the same is true and correct to the best of my belief.</p> <p> Date Surveyed Signature & Seal of Professional Surveyor 7977</p> <p>Certificate No. Gary L. Jones 7977</p> <p>BASIN SURVEYS</p>
--	---

SECTION 4, TOWNSHIP 24 SOUTH, RANGE 29 EAST, N.M.P.M.,
EDDY COUNTY, NEW MEXICO.



YATES PETROLEUM CORP.

REF: JUNIPER "BIP" FEDERAL #7H / WELL PAD TOPO

THE JUNIPER "BIP" FEDERAL #7H LOCATED 2310'
FROM THE NORTH LINE AND 660' FROM THE WEST LINE OF
SECTION 4, TOWNSHIP 24 SOUTH, RANGE 29 EAST,
N.M.P.M., EDDY COUNTY, NEW MEXICO.

BASIN SURVEYS P.O. BOX 1786-HOBBS, NEW MEXICO

W.O. Number: 21276 Drawn By: J. SMALL

Date: 04-09-2009 Disk: JMS 21276

Survey Date: 04-08-2009 Sheet 1 of 1 Sheets

YATES PETROLEUM CORPORATION

Juniper BIP Federal #7H

2310' FNL & 660' FWL

1980' FNL & 330' FEL

Section 4-T24S-R29E

Eddy County, New Mexico

1. The estimated tops of geologic markers are as follows:

Rustler	312'	Brushy Canyon Marker	6320'
Top of Salt	650'	Bone Spring	6620' OIL
Base of Salt	2750'	1 st Bone Spring Sand	7740' OIL
Bell Canyon	2990' OIL	Bone Spring Sand 1 Pay	8107' OIL
Cherry Canyon	3820' OIL	TVD	7890'
Brushy Canyon	5050' OIL	MD	11938'

2. The estimated depths at which anticipated water, oil or gas formations are expected to be encountered:

Water: Approx 35'

Oil or Gas: OIL: Bell Canyon, Cherry Canyon, Brushy Canyon, Bone Spring, 1st Bone Spring, and Bone Spring 1 Pay.

3. Pressure Control Equipment: BOPE will be installed on the 11 3/4" and 8 5/8" casing and rated for 3000 BOP systems will be consistent with API RP 53. Pressure tests will be conducted before drilling out from under all casing strings, which are set and cemented in place. Blowout Preventor controls will be installed prior to drilling the surface plug and will remain in use until the well is completed or abandoned. Preventors will be inspected and operated at least daily to ensure good mechanical working order, and this inspection recorded on the daily drilling report. See Exhibit B.

Auxiliary Equipment:

- A. Auxiliary Equipment: Kelly cock, pit level indicators, flow sensor equipment and a sub with full opening valve to fit the drill pipe and collars will be available on the rig floor in the open position at all times for use when kelly is not in use.

4. THE PROPOSED CASING AND CEMENTING PROGRAM:

- A. Casing Program: (All New)

<u>Hole Size</u>	<u>Casing Size</u>	<u>Wt./Ft</u>	<u>Grade</u>	<u>Coupling</u>	<u>Interval</u>	<u>Length</u>
14 3/4"	11 3/4"	42#	H-40	ST&C	0-650'	650'
11"	8 5/8"	32#	J-55	ST&C	0-100'	100'
11"	8 5/8"	24#	J-55	ST&C	100'-2200'	2100'
11"	8 5/8"	32#	J-55	ST&C	2200'-2850'	650'
7 7/8"	5 1/2"	17#	HCP-110	LT&C	0-8200'	8200'
7 7/8"	5 1/2"	17#	L-80	LT&C	8200'-11938	3738'

This well will be drilled vertically to 7363'. At 7363' the well will be kicked off and directionally drilled at 12 degrees per 100' with a 7 7/8" hole to 11,938' MD (7,890' TVD) where 5 1/2" casing will be set and cemented to surface. Penetration point of producing zone will be encountered at 2274' FNL and 1,130' FWL of section 4-24S-39E. The deepest TVD in the well is 7890' in the lateral.

Minimum Casing Design Factors: Burst 1.0, Tensile 1.8, Collapse 1.125

B. CEMENTING PROGRAM:

← See COA

Surface casing: TOC surface. Lead with 200 sacks C + 2% CaCl₂ (WT 14.80 YLD 1.64);
tail in with 200 sacks Class "C" + 2% CaCl₂ (WT 14.80 YLD 1.34).

Intermediate Casing: TOC surface. Lead with 585 sacks Lite "C" (WT 12.40 YLD 2.00).
Tail in with 200 sacks "C" + 2% CaCl₂ (WT. 14.80 YLD 1.32).

Production Casing:

Stage I: TOC 6000' DV tool at 6000'. Lead with 1300 sacks 505010 PzH
(WT 13.20 YLD 1.57)

Stage II: TOC 2500' DV Tool at 2500'. Lead with 775 sacks 505010PzH
(WT 13.20 YLD 1.57).

Stage III: TOC surface. 375 sacks 35:65:6PzC (WT 12.50 YLD 2.01).
Tail in with 100 sacks C Neat (WT 15.60 YLD 1.18).

5. Mud Program and Auxiliary Equipment:

<u>Interval</u>	<u>Type</u>	<u>Weight</u>	<u>Viscosity</u>	<u>Fluid Loss</u>
0-650'	Fresh Water	8.6-9.2	29-32	N/C
650'-2850'	Brine Water	10.0-10.2	28-28	N/C
2850'-7363'	Cut Brine	8.9-9.1	28-29	N/C
7363'-11938'	Cut Brine	8.9-9.1	28-32	<15

(Lateral Section)

Sufficient mud material(s) to maintain mud properties, control lost circulation and contain a blow out will be available at the well site during drilling operations. Mud will be checked hourly by rig personnel.

6. EVALUATION PROGRAM:

Samples: 30' samples to 3000'; 10' samples 3000'-TD.

Logging: Platform HALS; CMR.

Coring: None Anticipated.

DST's: As warranted.

Mudlogging: Yes-from surface casing to TD

7. Abnormal Conditions, Bottom hole pressure and potential hazards:

Anticipated BHP:

From: 0 TO: 650' Anticipated Max. BHP: 310 PSI

From: 650' TO: 2850' Anticipated Max. BHP: 1510 PSI

From: 2850' TO: 7890' Anticipated Max. BHP: 3725 PSI

Abnormal pressures or temperatures anticipated: None

Lost Circulation Zones Anticipated: None.

H₂S Zones Anticipated: None-

Maximum Bottom Hole Temperature: 152 F

8. ANTICIPATED STARTING DATE:

Plans are to drill this well as soon as possible after receiving approval. It should take approximately 30 days to drill the well with completion taking another 15 days.

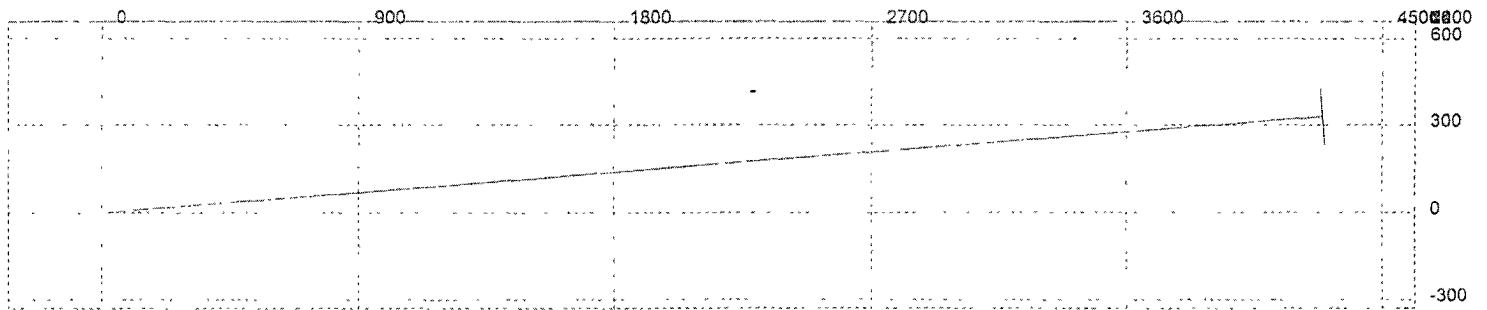
M.D.	Inclination	Azimuth	T.V.D.	N+/S-	E+/W-	D.L.S.	ToolFace	T.F. Ref.[HS/GN]	
0	0	0	0	0	0	0			
312	0	0	312	0	0	0			RUSTLER
650	0	0	650	0	0	0			TOP OF SALT
2,750	0	0	2,750	0	0	0			BASE OF SALT
2,990	0	0	2,990	0	0	0			BELL CANYON
3,820	0	0	3,820	0	0	0			CHERRY CANYON
5,050	0	0	5,050	0	0	0			BRUSHY CANYON
6,320	0	0	6,320	0	0	0			BRUSHY CANYON MARKER
6,620	0	0	6,620	0	0	0			BONE SPRINGS
7363	0	0	7363	0	0	12	86	GN	KOP
7375	1.44	85.6	7375	0.01	0.15	12	0	HS	
7400	4.44	85.6	7399.96	0.11	1.43	12	360	HS	
7425	7.44	85.6	7424.83	0.31	4.01	12	0	HS	
7450	10.44	85.6	7449.52	0.61	7.88	12	360	HS	
7475	13.44	85.6	7473.98	1	13.04	12	360	HS	
7500	16.44	85.6	7498.13	1.5	19.46	12	0	HS	
7525	19.44	85.6	7521.91	2.09	27.14	12	360	HS	
7550	22.44	85.6	7545.26	2.77	36.05	12	0	HS	
7575	25.44	85.6	7568.1	3.55	46.16	12	360	HS	
7600	28.44	85.6	7590.39	4.42	57.45	12	0	HS	
7625	31.44	85.6	7612.05	5.38	69.89	12	0	HS	
7650	34.44	85.6	7633.03	6.42	83.44	12	0	HS	
7675	37.44	85.6	7653.27	7.54	98.07	12	0	HS	
7700	40.44	85.6	7672.71	8.75	113.74	12	360	HS	
7725	43.44	85.6	7691.3	10.03	130.39	12	360	HS	
7740	45.24	85.6	7702.03	10.83	140.85	12	360	HS	1ST BONE SPRINGS
7750	46.44	85.6	7709	11.38	148	12	0	HS	
7775	49.44	85.6	7725.74	12.81	166.5	12	0	HS	
7800	52.44	85.6	7741.49	14.3	185.86	12	0	HS	
7825	55.44	85.6	7756.21	15.85	206.01	12	0	HS	
7850	58.44	85.6	7769.84	17.45	226.89	12	0	HS	
7875	61.44	85.6	7782.37	19.11	248.47	12	0	HS	
7900	64.44	85.6	7793.74	20.82	270.66	12	360	HS	
7925	67.44	85.6	7803.93	22.57	293.42	12	360	HS	
7950	70.44	85.6	7812.91	24.36	316.68	12	0	HS	
7975	73.44	85.6	7820.66	26.18	340.37	12	360	HS	
8000	76.44	85.6	7827.16	28.03	364.44	12	0	HS	
8025	79.44	85.6	7832.38	29.91	388.81	12	0	HS	
8050	82.44	85.6	7836.32	31.8	413.43	12	0	HS	
8075	85.44	85.6	7838.95	33.71	438.21	12	0	HS	
8100	88.44	85.6	7840.29	35.62	463.1	12	0	HS	
8106/83	89/26	85.6	7840.43	36.15	469.9	12	360	HS	1st BONE SPRINGS PAY
11938/53	89/26	85.6	7890	330	4290	0			LATERAL TD

Well will be drilled vertically to 7363'. At 7363' well will be kicked off and directionally drilled at 12 degrees per 100' with a 7 7/8" hole to 11,938' MD (7,890' TVD) where 5 1/2" casing will be set and cemented. Penetration point of producing zone will be encountered at 2274' FNL and 1,130' FWL Section 4-24S-29E. Deepest TVD in the well is 7890' in the lateral.

3D³ Directional Drilling Planner - 3D View

Company: Yates Petroleum Corporation

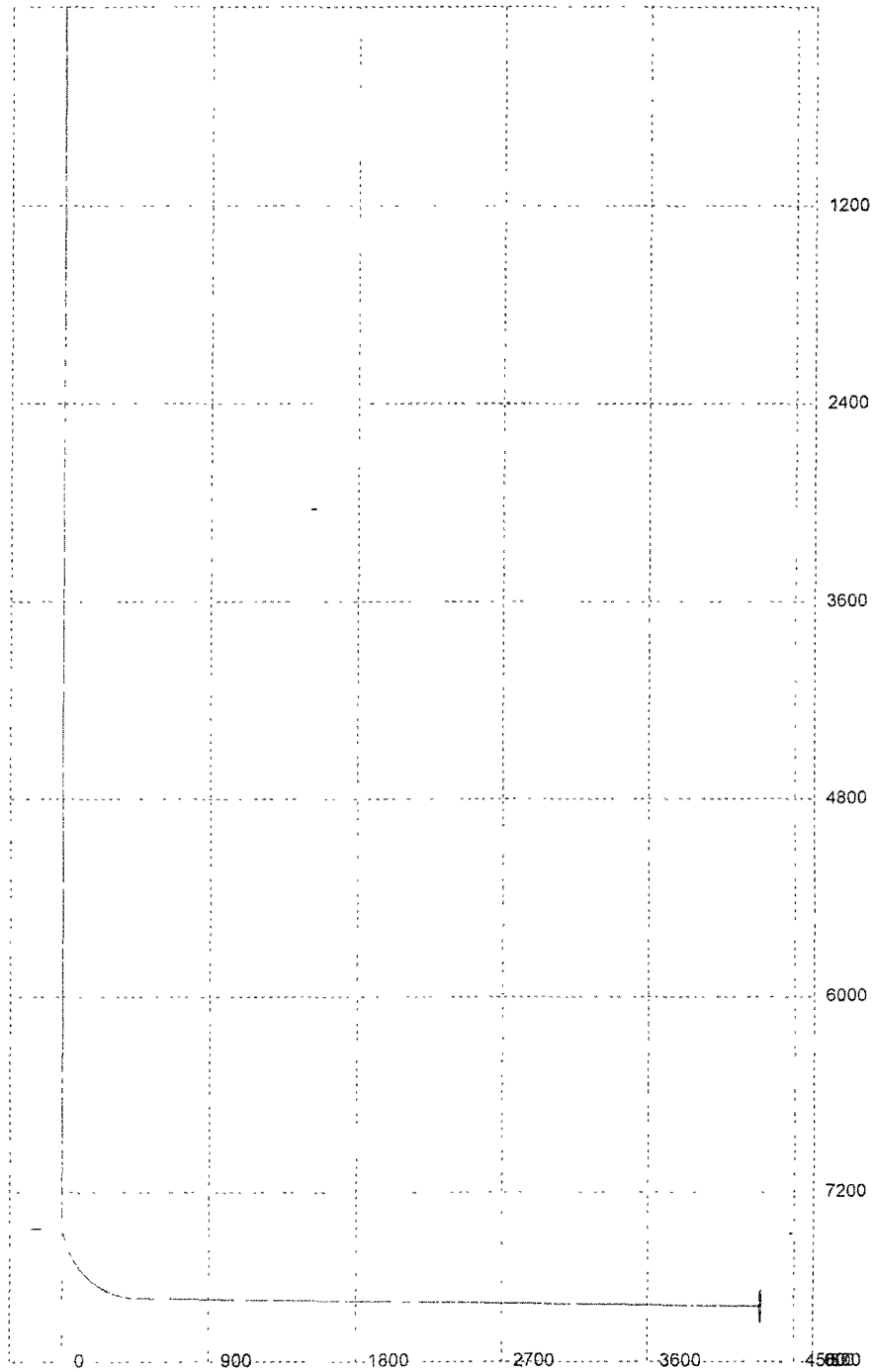
Well: Juniper BIP Federal #7H

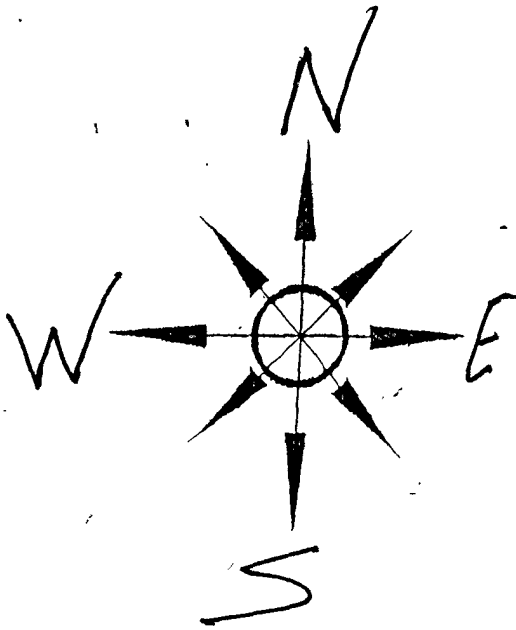


3D³ Directional Drilling Planner - 3D View

Company: Yates Petroleum Corporation

Well: Juniper BIP Federal #7H



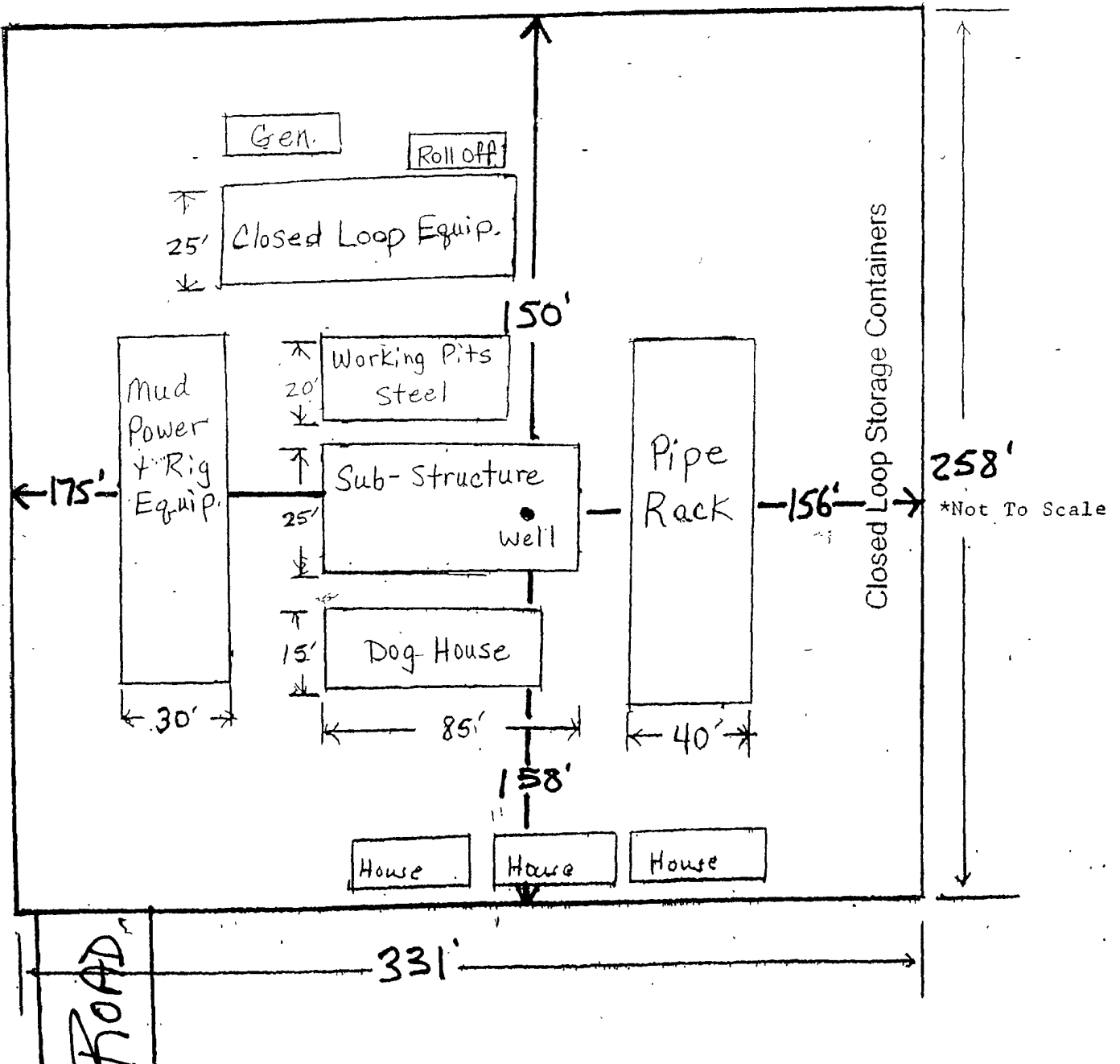


Yates Petroleum Corporation

Location Layout for Permian Basin

Closed Loop Design Plan

YATES PETROLEUM CORPORATION
Juniper BIP Federal. #7H
2310' FNL and 660' FWL SHL
1980' FNL and 330' FEL BHL
Section 4, T24S-R29E
Eddy County, New Mexico Exhibit B



YATES PETROLEUM CORPORATION
Piping from Choke Manifold
to the Closed-Loop Drilling Mud System

YATES PETROLEUM CORPORATION

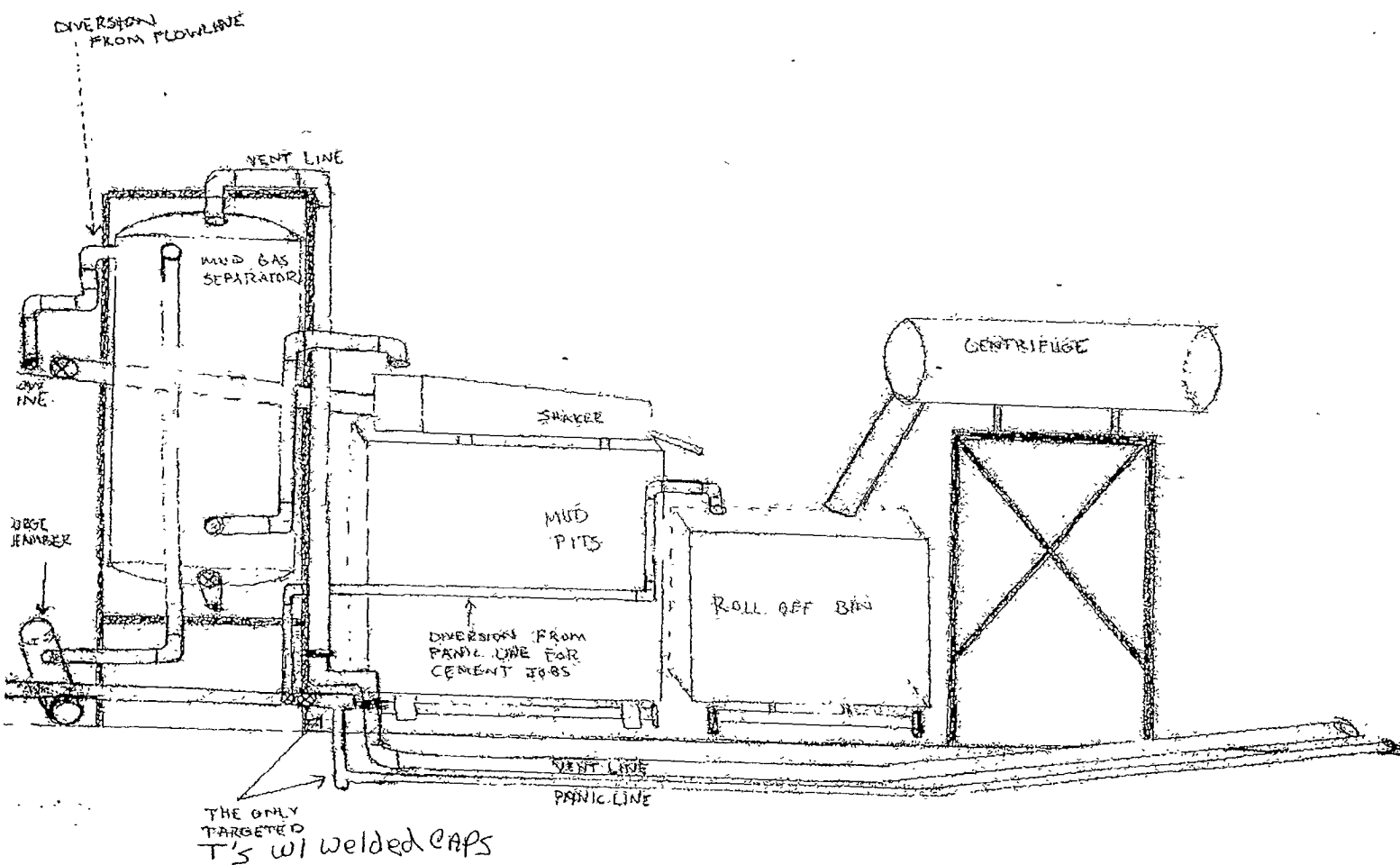
Juniper BIP Federal. #7H

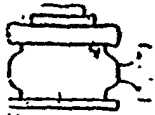
2310' FNL and 660' FWL SHL

1980' FNL and 330' FEL BHL

Section 4, T24S-R29E

Eddy County, New Mexico Exhibit E



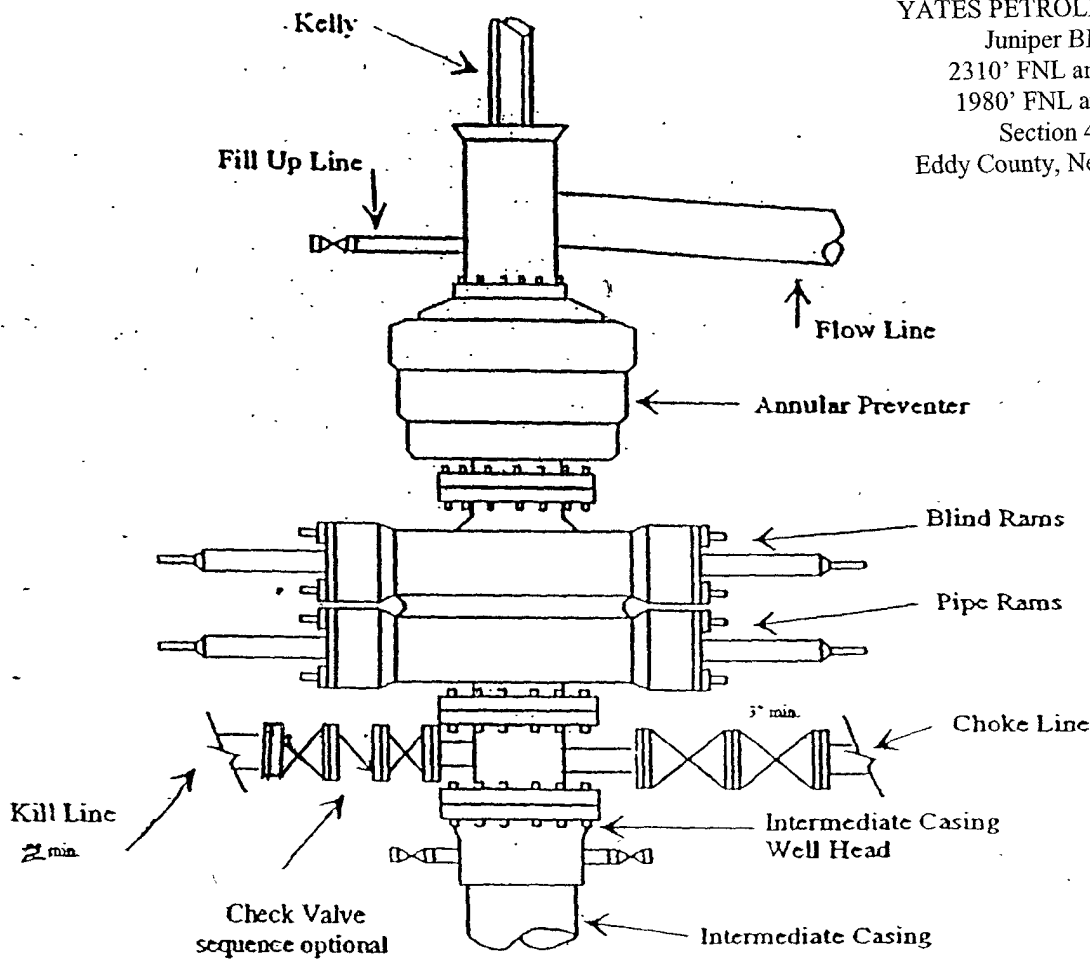


Yates Petroleum Corporation

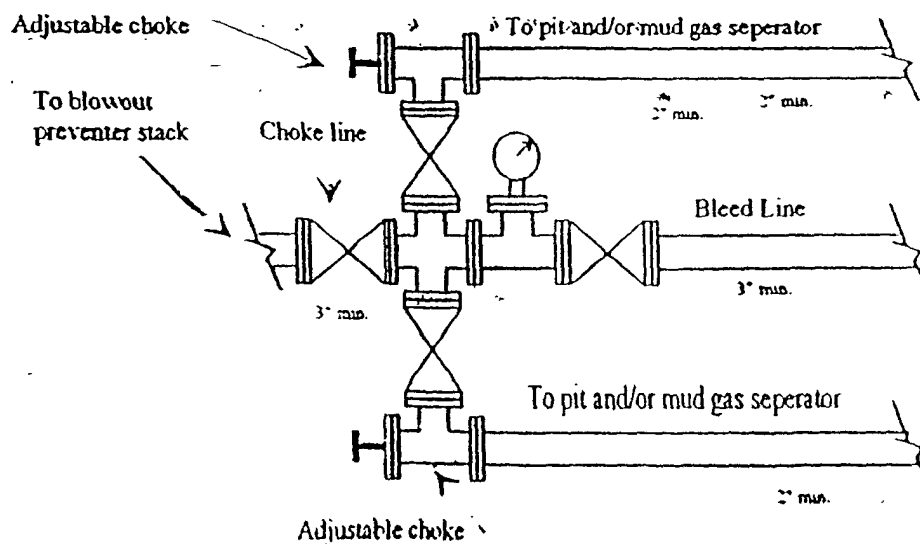
BOP-3

Typical 3,000 psi Pressure System Schematic Annular with Double Ram Preventer Stack

YATES PETROLEUM CORPORATION
Juniper BIP Federal. #7H
2310' FNL and 660' FWL SHL
1980' FNL and 330' FEL BHL
Section 4, T24S-R29E
Eddy County, New Mexico Exhibit C



Typical 3,000 psi choke manifold assembly with at least these minimum features



MULTI-POINT SURFACE USE AND OPERATIONS PLAN

Yates Petroleum Corporation
Juniper BIP Federal #7H
2310' FNL and 660' FWL (Surface Hole Location)
1980' FNL and 330' FEL, (Bottom Hole Location)
Section 4, T24S-R29E
Eddy County, New Mexico

This plan is submitted with Form 3160-3, Application for Permit to Drill, covering the above described well. The purpose of this plan is to describe the location of the proposed well, the proposed construction activities and operations plan, the magnitude of the surface disturbance involved and the procedures to be followed in rehabilitating the surface after completion of the operations, so that a complete appraisal can be made of the environmental effect associated with the operations.

1. EXISTING ROADS:

Exhibit A is a portion of the BLM map showing the well and roads in the vicinity of the proposed location. The proposed well site is located approximately 8 miles east of Malaga, New Mexico and the access route to the location is indicated in red and green on Exhibit A.

DIRECTIONS:

Go east of Malaga, NM on Duarte Road (CR-720) for about 0.7 of a mile to Harroun Road (CR-745). Turn left on Harroun Road and go approximately 2.9 miles to Dog Town Road (CR-788). Turn right on Dog Town Road and go approximately 1.1 miles. Turn left here on caliche road and go approximately 0.6 of a mile. Turn left here on lease road going to the north and go approximately 1.2 miles. The new access road will start here going east.

2. PLANNED ACCESS ROAD:

- A. The proposed new access road will start here going in a southeasterly direction for approximately .3 of a mile and then will turn to the northeast and go approximately 200 feet to the southwest corner of the proposed well location.
- B. The new road will be 14' in width (driving surface) and will be adequately drained to control runoff and soil erosion.
- C. The new road will be bladed with drainage on one side. Traffic turnouts may be built as needed.
- D. The route of the road is visible.
- E. Existing roads will be maintained in the same or better condition.

3. LOCATION OF EXISTING WELL

- A. There is drilling activity within a one-mile radius of the well site.
- B. Exhibit D shows existing wells within a one-mile radius of the proposed well site.

4. LOCATION OF EXISTING AND/OR PROPOSED FACILITIES

- A. There are production facilities on this lease at the present time. However, if production facilities are needed for this well they will be placed on the location as determined by Yates' Production Department. Placement has not been determined at this time.
- B. In the event that the well is productive, the necessary production facilities will be installed on the drilling pad. If the well is productive oil, a gas or diesel self-contained unit will be used to provide the necessary power until an electric power line can be built if needed.

- C. Should off location facilities be needed for power line, flow line right-of-ways, etc. they will be filed under a separate application by Yates or a third party if applicable. The route and placement will be determined at that time.

5. LOCATION AND TYPE OF WATER SUPPLY:

- A. It is planned to drill the proposed well with a fresh water system. The water will be obtained from commercial sources and will be hauled to the location by truck over the existing and proposed roads shown in Exhibit A.

6. SOURCE OF CONSTRUCTION MATERIALS:

The dirt contractor will acquire any materials from the closest source at the time of construction of the well pad.

7. METHODS OF HANDLING WASTE DISPOSAL:

- A. A closed loop system will be used to drill this well.
- B. The closed loop system will be constructed, maintained, and closed in compliance with the State of New Mexico, Energy and Natural Resources Department, Oil Conservation Division – the “Pit Rule” 19.15.17 NMAC.
- C. Water produced during operations will be collected in tanks until hauled to an approved disposal system, or separate disposal application will be submitted.
- D. Oil produced during operations will be stored in tanks until sold.
- E. Current laws and regulations pertaining to the disposal of human waste will be complied with.
- F. All trash, junk, and other waste materials will be contained in trash cages or bins to prevent scattering and will be removed and deposited in an approved sanitary landfill. Burial on site is not approved.

8. ANCILLARY FACILITIES: None

9. WELLSITE LAYOUT:

- A. Exhibit B shows the relative location and dimensions of the well pad, the closed loop mud system, location of the drilling equipment, rig orientation and access road approach. The proposed well location will be approximately 350' x 300'. All of the location will be constructed within the 600' x. 600' staked area.
- B. The closed loop system will be constructed, maintained and closed in compliance with the State of New Mexico, Energy and Natural Resources Department, Oil Conservation Division—the “Pit Rule” 19.15.17 NMAC.

10. PLANS FOR RESTORATION

- A. After finishing drilling and/or completion operations, all equipment and other material not needed for further operations will be removed. The location will be cleaned of all trash and junk to leave the well site in as aesthetically pleasing a condition as possible. At the time interim remediation is proposed Yates will furnish the BLM with a Sundry Notice detailing the remediation plans.
- B. Unguarded pits, if any, containing fluids will be fenced until they have dried and been leveled.
- C. If the proposed well is non-productive, all rehabilitation and/or vegetation requirements of the Bureau of Land Management will be complied with and will be accomplished as expeditiously as possible.

11. SURFACE OWNERSHIP:

Surface Estate: Managed by the Bureau of Land Management, 620 East
Greene Street, Carlsbad, NM 88201

Mineral Estate: Bureau of Land Management, 620 East Greene Street,
Carlsbad, NM 88201

12. OTHER INFORMATION:

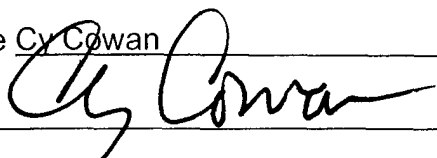
- A. Topography: Refer to the existing archaeological report for a description of the topography, flora, fauna, soil characteristics, and dwellings, historical and cultural sites.
- B. The primary surface use is for grazing.

CERTIFICATION
YATES PETROLEUM CORPORATION
Juniper BIP Federal #7H

I hereby certify that I or the company I represent, have inspected the drill site and access route proposed herein; that the company I represent is familiar with the conditions which currently exist; that full knowledge of state and federal laws applicable to this operation; that the statements made in this APD package are, to the best of my knowledge, true and correct; and that the work associated with the operations proposed herein will be performed in conformity with this APD package and the terms and conditions under which it is approved. I also certify that the company I represent is responsible for the operations conducted under this application. These statements are subject to the provisions of 18 U.S.C. 1001 for the filing of false statements.

Executed this 7th day of May, 2009.

Printed Name Cy Cowan

Signature 

Position Title Land Regulatory Agent

Address 105 South Fourth Street, Artesia, NM 88210

Telephone 575-748-4372

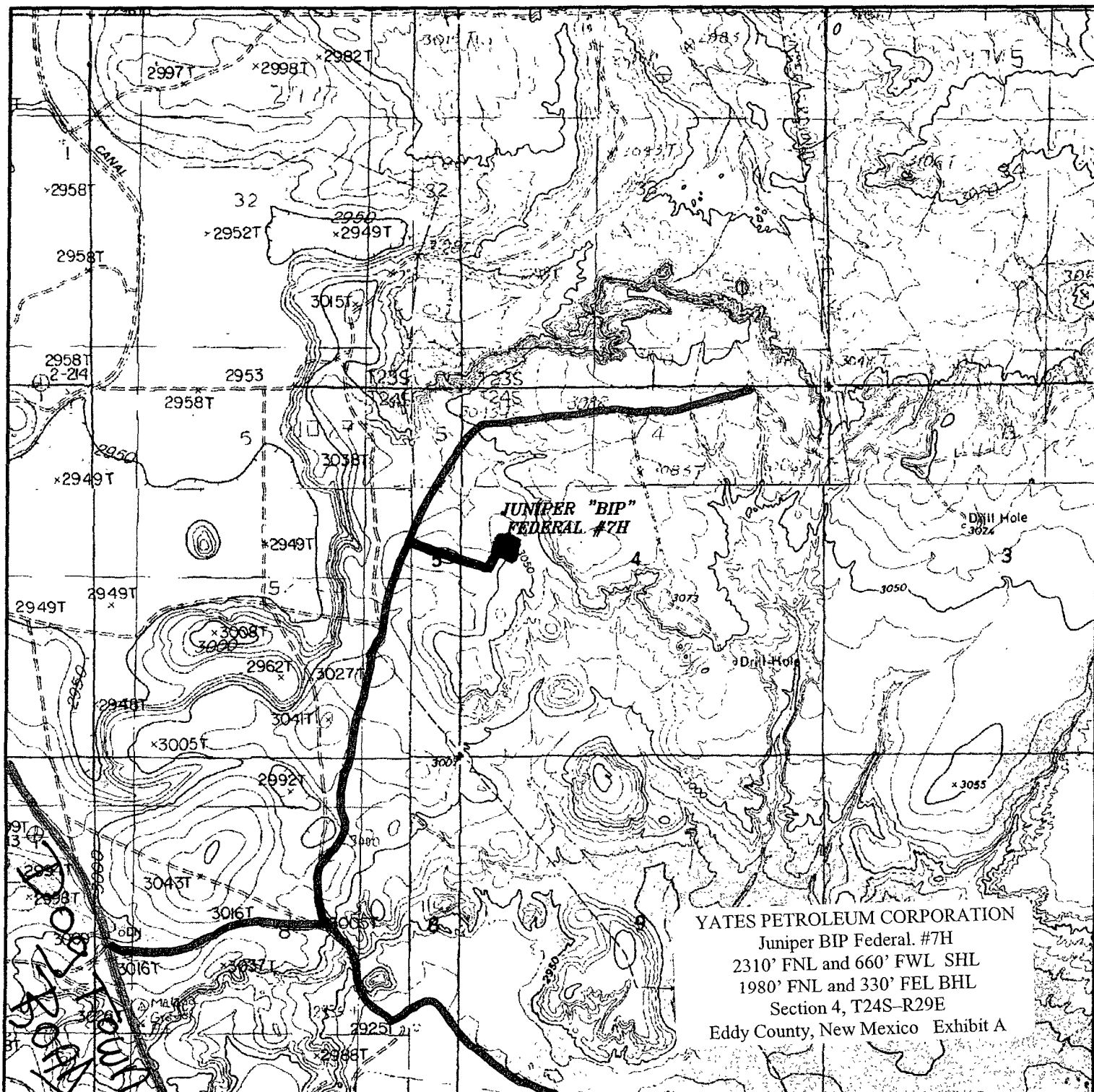
E-mail (optional) cy@yatespetroleum.com

Field Representative (if not above signatory) Tim Bussell

Address (if different from above) Same

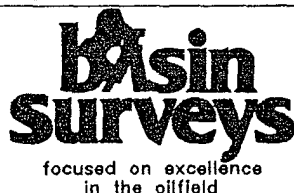
Telephone (if different from above) 575-748-4221

E-mail (optional) _____



JUNIPER "BIP" FEDERAL #7H

Located at 2310' FNL AND 660' FWL
 Section 4, Township 24 South, Range 29 East,
 N.M.P.M., Eddy County, New Mexico.



P.O. Box 1786
 1120 N. West County Rd.
 Hobbs, New Mexico 88241
 (575) 393-7316 - Office
 (575) 392-2206 - Fax
basinsurveys.com

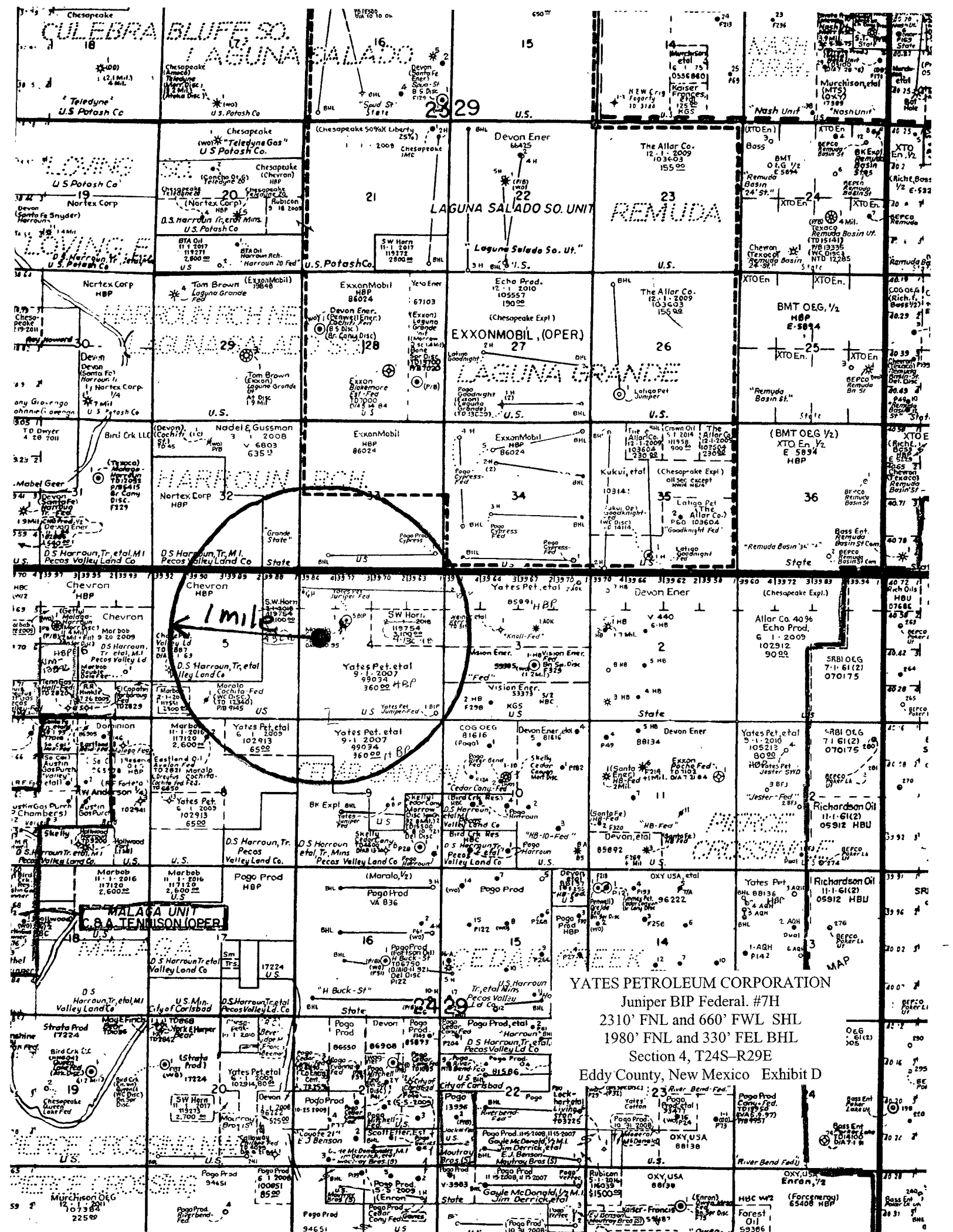
W.O. Number: JMS 21276

Survey Date: 04-08-2009

Scale: 1" = 2000'

Date: 04-09-2009

**YATES
 PETROLEUM
 CORP.**



YATES PETROLEUM CORPORATION
Juniper BIP Federal. #7H
2310' FNL and 660' FWL SHL
1980' FNL and 330' FEL BHL
Section 4, T24S-R29E
Eddy County, New Mexico Exhibit D

ATS-09-330

OCD-ARTESIA

Secretary's Potash

Form 3160-3
(August 2007)

UNITED STATES
DEPARTMENT OF THE INTERIOR
BUREAU OF LAND MANAGEMENT
APPLICATION FOR PERMIT TO DRILL OR REENTER

FORM APPROVED
OMB NO 1004-0137
Expires: July 31, 2010

5. Lease Serial No. 3142 NM-99034 NM119754

6. If Indian, Allottee or Tribe Name
N/A

7. If Unit or CA Agreement, Name and No.
N/A

8. Lease Name and Well No
Juniper BIP Federal #7H

9. API Well No.

1a. Type of Work: ☒ DRILL ☐ REENTER
1b. Type of Well: ☒ Oil Well ☐ Gas Well ☐ Other ☐ Single Zone ☐ Multiple Zone

2. Name of Operator
Yates Petroleum Corporation 025575

3a. Address 105 South Fourth Street, Artesia, NM 88210
3b. Phone No. (include area code) 505-748-1471

10. Field and Pool, or Exploratory
Wildcat Bone Spring

4. Location of well (Report location clearly and in accordance with any State requirements. *)
At surface 2310' FNL & 660' FWL, Ut. D
At proposed prod. zone 1980' FNL & 330' FEL, Ut. A

11. Sec., T., R., M., or Blk. And Survey or Area
Section 4-T24S-R29E

14. Distance in miles and direction from the nearest town or post office*
The well is about 8 miles east of Malaga, NM.

12. County or Parish Eddy
13. State NM

15. Distance from proposed* location to nearest property or lease line, ft. (Also to nearest drlg. unit line, if any) 330'
16. No. of acres in lease 878.94
17. Spacing Unit dedicated to this well S2N2 of Section 4-24S-29E

18. Distance from proposed location* to nearest well, drilling, completed, applied for, on this lease, ft. 7890' VD; 11938'MD
20. BLM/ BIA Bond No. on file NATIONWIDE BOND #NMB000434

21. Elevations (Show whether DF, KDB, RT, GL, etc.) 3050 GL
22. Approximate date work will start* ASAP
23. Estimated duration

24. Attachments

The following, completed in accordance with the requirements of Onshore Oil and Gas Order No. 1 shall be attached to this form:

- Well plat certified by a registered surveyor.
- A Drilling Plan
- A Surface Use Plan (if the location is on National Forest System Lands, the SUPO must be filed with the appropriate
- Bond to cover the operations unless covered by existing bond on file(see item 20 above).
- Operator certification

25. Signature [Signature]

Title

Land Regulatory Agent

Approved By (Signature)

Title

Application approval does not warrant or operations thereon

Conditions of approval, if any, are attached

Title 18 U.S.C. Section 1001 and Title 43

States any false, fictitious or fraudulent statement

*(Instructions on page 2)

POTASH APD & SN QL

Decision: QL Approved

Date: 5/15/09 Initials: TJM

Return to Legal Instruments Examiner

ATS-09-330

ed by the

29

APD DISTRIBUTION CHECK LIST
INITIALS DATE

Geologist: _____
Surface Prot: _____
Solids: TJM 5/15/09
(If Potash) _____
V. P. _____

applicant to cc

of the United

ATS-09-330

PECOS DISTRICT CONDITIONS OF APPROVAL

OPERATOR'S NAME:	Yates Petroleum Corporation
LEASE NO.:	NM-119754
WELL NAME & NO.:	Juniper BIP Federal #7H
SURFACE HOLE FOOTAGE:	2310' FNL & 660' FWL
BOTTOM HOLE FOOTAGE:	1980' FNL & 330' FEL
LOCATION:	Section 04, T. 24 S., R 29 E., NMMPM
COUNTY:	Eddy County, New Mexico

TABLE OF CONTENTS

Standard Conditions of Approval (COA) apply to this APD. If any deviations to these standards exist or special COAs are required, the section with the deviation or requirement will be checked below.

- ☐ **General Provisions**
- ☐ **Permit Expiration**
- ☐ **Archaeology, Paleontology, and Historical Sites**
- ☐ **Noxious Weeds**
- ☒ **Special Requirements**
 - Communitization Agreement**
- ☐ **Construction**
 - Notification
 - Topsoil
 - Reserve Pit
 - Federal Mineral Material Pits
 - Well Pads
 - Roads
- ☐ **Road Section Diagram**
- ☒ **Drilling**
- ☐ **Production (Post Drilling)**
 - Well Structures & Facilities
- ☐ **Interim Reclamation**
- ☐ **Final Abandonment/Reclamation**

I. GENERAL PROVISIONS

The approval of the Application For Permit To Drill (APD) is in compliance with all applicable laws and regulations: 43 Code of Federal Regulations 3160, the lease terms, Onshore Oil and Gas Orders, Notices To Lessees, New Mexico Oil Conservation Division (NMOCD) Rules, National Historical Preservation Act As Amended, and instructions and orders of the Authorized Officer. Any request for a variance shall be submitted to the Authorized Officer on Form 3160-5, Sundry Notices and Report on Wells.

II. PERMIT EXPIRATION

If the permit terminates prior to drilling and drilling cannot be commenced within 60 days after expiration, an operator is required to submit Form 3160-5, Sundry Notices and Reports on Wells, requesting surface reclamation requirements for any surface disturbance. However, if the operator will be able to initiate drilling within 60 days after the expiration of the permit, the operator must have set the conductor pipe in order to allow for an extension of 60 days beyond the expiration date of the APD. (Filing of a Sundry Notice is required for this 60 day extension.)

III. ARCHAEOLOGICAL, PALEONTOLOGY & HISTORICAL SITES

Any cultural and/or paleontological resource discovered by the operator or by any person working on the operator's behalf shall immediately report such findings to the Authorized Officer. The operator is fully accountable for the actions of their contractors and subcontractors. The operator shall suspend all operations in the immediate area of such discovery until written authorization to proceed is issued by the Authorized Officer. An evaluation of the discovery shall be made by the Authorized Officer to determine the appropriate actions that shall be required to prevent the loss of significant cultural or scientific values of the discovery. The operator shall be held responsible for the cost of the proper mitigation measures that the Authorized Officer assesses after consultation with the operator on the evaluation and decisions of the discovery. Any unauthorized collection or disturbance of cultural or paleontological resources may result in a shutdown order by the Authorized Officer.

IV. NOXIOUS WEEDS

The operator shall be held responsible if noxious weeds become established within the areas of operations. Weed control shall be required on the disturbed land where noxious weeds exist, which includes the roads, pads, associated pipeline corridor, and adjacent land affected by the establishment of weeds due to this action. The operator shall consult with the Authorized Officer for acceptable weed control methods, which include following EPA and BLM requirements and policies.

V. SPECIAL REQUIREMENT(S)

Communitization Agreement

A Communitization Agreement covering the acreage dedicated to this well must be filed for approval with the BLM. The effective date of the agreement shall be prior to any sales. Operator to supply NMOCD order or description of pool which details the vertical and horizontal extent of pool to verify that requested communitization is within an approved and established pool.

VI. CONSTRUCTION

A. NOTIFICATION

The BLM shall administer compliance and monitor construction of the access road and well pad. Notify the Carlsbad Field Office at (575) 234-5972 at least 3 working days prior to commencing construction of the access road and/or well pad.

When construction operations are being conducted on this well, the operator shall have the approved APD and Conditions of Approval (COA) on the well site and they shall be made available upon request by the Authorized Officer.

B. TOPSOIL

The operator shall stockpile the topsoil of the well pad. The topsoil to be stripped is approximately 6 inches in depth. The topsoil shall not be used to backfill the reserve pit and will be used for interim and final reclamation.

C. RESERVE PITS

Tanks are required for drilling operations: No Pits.

The operator shall properly dispose of drilling contents at an authorized disposal site.

D. FEDERAL MINERAL MATERIALS PIT

If the operator elects to surface the access road and/or well pad, mineral materials extracted during construction of the reserve pit may be used for surfacing the well pad and access road and other facilities on the lease.

Payment shall be made to the BLM prior to removal of any additional federal mineral materials from any site other than the reserve pit. Call the Carlsbad Field Office at (575) 234-5972.

E. WELL PAD SURFACING

Surfacing of the well pad is not required.

If the operator elects to surface the well pad, the surfacing material may be required to be removed at the time of reclamation.

The well pad shall be constructed in a manner which creates the smallest possible surface disturbance, consistent with safety and operational needs.

F. ON LEASE ACCESS ROADS

Road Width

The access road shall have a driving surface that creates the smallest possible surface disturbance and does not exceed fourteen (14) feet in width. The maximum width of surface disturbance, when constructing the access road, shall not exceed thirty (30) feet.

Surfacing

Surfacing material is not required on the new access road driving surface. If the operator elects to surface the new access road or pad, the surfacing material may be required to be removed at the time of reclamation.

Where possible, no improvements should be made on the unsurfaced access road other than to remove vegetation as necessary, road irregularities, safety issues, or to fill low areas that may sustain standing water.

The Authorized Officer reserves the right to require surfacing of any portion of the access road at any time deemed necessary. Surfacing may be required in the event the road deteriorates, erodes, road traffic increases, or it is determined to be beneficial for future field development. The surfacing depth and type of material will be determined at the time of notification.

Crowning

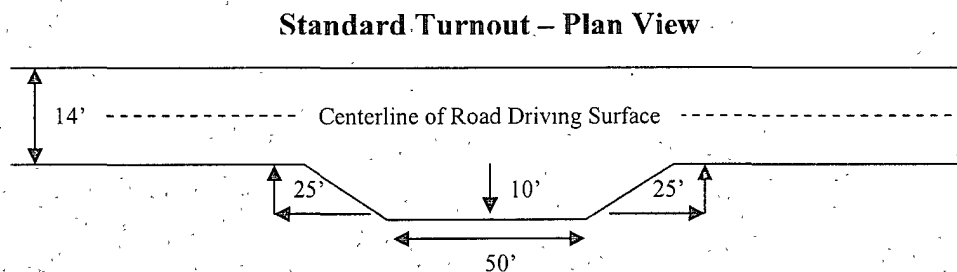
Crowning shall be done on the access road driving surface. The road crown shall have a grade of approximately 2% (i.e., a 1" crown on a 14' wide road). The road shall conform to Figure 1; cross section and plans for typical road construction.

Ditching

Ditching shall be required on both sides of the road.

Turnouts

Vehicle turnouts shall be constructed on the road. Turnouts shall be intervisible with interval spacing distance less than 1000 feet. Turnouts shall be constructed on all blind curves. Turnouts shall conform to the following diagram:

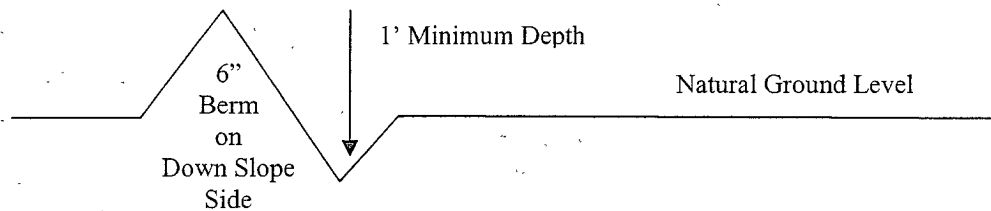


Drainage

Drainage control systems shall be constructed on the entire length of road (e.g. ditches, sidehill outsloping and insloping, lead-off ditches, culvert installation, and low water crossings).

A typical lead-off ditch has a minimum depth of 1 foot below and a berm of 6 inches above natural ground level. The berm shall be on the down-slope side of the lead-off ditch.

Cross Section of a Typical Lead-off Ditch



All lead-off ditches shall be graded to drain water with a 1 percent minimum to 3 percent maximum ditch slope. The spacing interval are variable for lead-off ditches and shall be determined according to the formula for spacing intervals of lead-off ditches, but may be amended depending upon existing soil types and centerline road slope (in %);

Formula for Spacing Interval of Lead-off Ditches

Example - On a 4% road slope that is 400 feet long, the water flow shall drain water into a lead-off ditch. Spacing interval shall be determined by the following formula:

$$400 \text{ foot road with } 4\% \text{ road slope: } \frac{400'}{4\%} + 100' = 200' \text{ lead-off ditch interval}$$

Culvert Installations

Appropriately sized culvert(s) shall be installed at the deep waterway channel flow crossing.

Cattleguards

An appropriately sized cattleguard(s) sufficient to carry out the project shall be installed and maintained at fence crossing(s).

Any existing cattleguard(s) on the access road shall be repaired or replaced if they are damaged or have deteriorated beyond practical use. The operator shall be responsible for the condition of the existing cattleguard(s) that are in place and are utilized during lease operations.

A gate shall be constructed and fastened securely to H-braces.

Fence Requirement

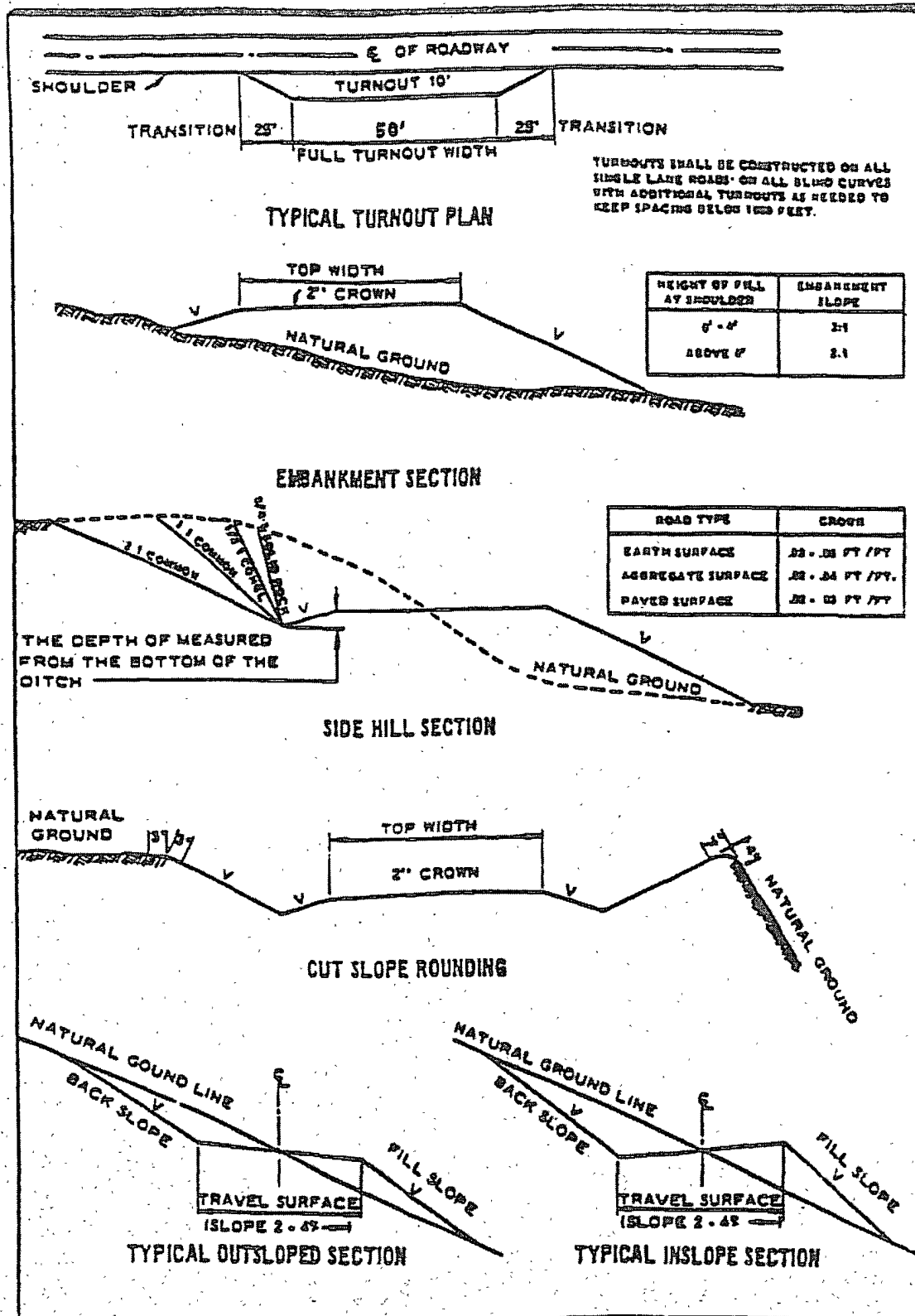
Where entry is required across a fence line, the fence shall be braced and tied off on both sides of the passageway prior to cutting.

The operator shall notify the private surface landowner or the grazing allotment holder prior to crossing any fence(s).

Public Access

Public access on this road shall not be restricted by the operator without specific written approval granted by the Authorized Officer.

Figure 1 – Cross Sections and Plans For Typical Road Sections



VII. DRILLING

A. DRILLING OPERATIONS REQUIREMENTS

The BLM is to be notified a minimum of 4 hours in advance for a representative to witness:

- a. Spudding well
- b. Setting and/or Cementing of all casing strings
- c. BOPE tests

☒ **Eddy County**

Call the Carlsbad Field Office, 620 East Greene St., Carlsbad, NM 88220,
(575) 361-2822

1. **Although Hydrogen Sulfide has not been reported in the area, it is always a potential hazard. If Hydrogen Sulfide is encountered, please report measured amounts and formations to the BLM.**
2. Unless the production casing has been run and cemented or the well has been properly plugged, the drilling rig shall not be removed from over the hole without prior approval.
3. Floor controls are required for 3M or Greater systems. These controls will be on the rig floor, unobstructed, readily accessible to the driller and will be operational at all times during drilling and/or completion activities. Rig floor is defined as the area immediately around the rotary table; the area immediately above the substructure on which the draw works are located, this does not include the dog house or stairway area.

B. CASING

Changes to the approved APD casing and cement program require submitting a sundry and receiving approval prior to work. Failure to obtain approval prior to work will result in an Incident of Non-Compliance being issued.

Centralizers required on surface casing per Onshore Order 2.III.B.1.f.

Wait on cement (WOC) time for a primary cement job will be a minimum 18 hours for a water basin, 24 hours in the potash area, or 500 pounds compressive strength, whichever is greater for all casing strings. Provide compressive strengths including hours to reach required 500 pounds compressive strength prior to cementing each casing string. See individual casing strings for details regarding lead cement slurry requirements.

No pea gravel permitted for remedial or fall back remedial without prior authorization from the BLM engineer.

Secretary's Potash.

Medium cave/karst.

Possible lost circulation in the Delaware and Bone Spring formations.

1. The 11-3/4 inch surface casing shall be set **at approximately 650 feet (a minimum of 25 feet into the Rustler Anhydrite and above the salt)** and cemented to the surface. **If the salt is encountered at a shallower depth, the casing must be set 25' above the top of the salt.**

- a. If cement does not circulate to the surface, the appropriate BLM office shall be notified and a temperature survey utilizing an electronic type temperature survey with a surface log readout will be used or a cement bond log shall be run to verify the top of the cement.
- b. **Wait on cement (WOC) time for a primary cement job is to include the lead cement slurry.**
- c. Wait on cement (WOC) time for a remedial job will be a minimum of 4 hours after bringing cement to surface or 500 pounds compressive strength, whichever is greater.
- d. If cement falls back, remedial cementing will be done prior to drilling out that string.

2. The minimum required fill of cement behind the 8-5/8 inch intermediate casing is:

- ☒ Cement to surface. If cement does not circulate see B.1.a, c-d above.
Wait on cement (WOC) time for a primary cement job is to include the lead cement slurry due to cave/karst and Secretary's Potash.

Centralizers required on horizontal leg, must be type for horizontal service and minimum of one every other joint.

3. The minimum required fill of cement behind the 5-1/2 inch production casing is:

- a. First stage to DV tool, cement shall:
 - ☒ Cement to circulate. If cement does not circulate, contact the appropriate BLM office, before proceeding with second stage cement job.

b. Second stage to second DV tool, cement shall:

- ☒ Cement to circulate. If cement does not circulate, contact the appropriate BLM office, before proceeding with third stage cement job.

c. Third stage above DV tool, cement shall:

- ☒ Cement to circulate. If cement does not circulate, contact the appropriate BLM office.

4. If hardband drill pipe is rotated inside casing, returns will be monitored for metal. If metal is found in samples, drill pipe will be pulled and rubber protectors which have a larger diameter than the tool joints of the drill pipe will be installed prior to continuing drilling operations.

C. PRESSURE CONTROL

1. All blowout preventer (BOP) and related equipment (BOPE) shall comply with well control requirements as described in Onshore Oil and Gas Order No. 2 and API RP 53 Sec. 17. **Piping from choke manifold and to flare to be as straight as possible.**
2. The appropriate BLM office shall be notified a minimum of 4 hours in advance for a representative to witness the tests.
 - a. The tests shall be done by an independent service company.
 - b. The results of the test shall be reported to the appropriate BLM office.
 - c. All tests are required to be recorded on a calibrated test chart. A copy of the BOP/BOPE test chart and a copy of independent service company test will be submitted to the appropriate BLM office.
 - d. The BOP/BOPE test shall include a low pressure test from 250 to 300 psi. The test will be held for a minimum of 10 minutes if test is done with a test plug and 30 minutes without a test plug.

D. DRILL STEM TEST

If drill stem tests are performed, Onshore Order 2.III.D shall be followed.

WWI 060809

VIII. PRODUCTION (POST DRILLING)

A. WELL STRUCTURES & FACILITIES

Placement of Production Facilities

Production facilities should be placed on the well pad to allow for maximum interim recontouring and revegetation of the well location.

Containment Structures

The containment structure shall be constructed to hold the capacity of the entire contents of the largest tank, plus 24 hour production, unless more stringent protective requirements are deemed necessary by the Authorized Officer.

Painting Requirement

All above-ground structures including meter housing that are not subject to safety requirements shall be painted a flat non-reflective paint color
Shale Green, Munsell Soil Color Chart # 5Y 4/2

IX. INTERIM RECLAMATION & RESERVE PIT CLOSURE

A. INTERIM RECLAMATION

If the well is a producer, interim reclamation shall be conducted on the well site in accordance with the orders of the Authorized Officer. The operator shall submit a Sundry Notices and Reports on Wells (Notice of Intent), Form 3160-5, prior to conducting interim reclamation.

During the life of the development, all disturbed areas not needed for active support of production operations should undergo interim reclamation in order to minimize the environmental impacts of development on other resources and uses.

The operators should work with BLM surface management specialists to devise the best strategies to reduce the size of the location. Any reductions should allow for remedial well operations, as well as safe and efficient removal of oil and gas.

During reclamation, the removal of caliche is important to increasing the success of revegetating the site. Removed caliche may be used for road repairs, fire walls or for building other roads and locations. In order to operate the well or complete workover operations, it may be necessary to drive, park and operate on restored interim vegetation within the previously disturbed area. Disturbing revegetated areas for production or workover operations will be allowed. If there is significant disturbance and loss of vegetation, the area will need to be revegetated. Communicate with the appropriate BLM office for any exceptions/exemptions if needed.

Seed Mixture 3, for Shallow Sites

The holder shall seed all disturbed areas with the seed mixture listed below. The seed mixture shall be planted in the amounts specified in pounds of pure live seed (PLS)* per acre. There shall be no primary or secondary noxious weeds in the seed mixture. Seed will be tested and the viability testing of seed will be done in accordance with State law(s) and within nine (9) months prior to purchase. Commercial seed will be either certified or registered seed. The seed container will be tagged in accordance with State law(s) and available for inspection by the authorized officer.

Seed will be planted using a drill equipped with a depth regulator to ensure proper depth of planting where drilling is possible. The seed mixture will be evenly and uniformly planted over the disturbed area (smaller/heavier seeds have a tendency to drop the bottom of the drill and are planted first). The holder shall take appropriate measures to ensure this does not occur. Where drilling is not possible, seed will be broadcast and the area shall be raked or chained to cover the seed. When broadcasting the seed, the pounds per acre are to be doubled. The seeding will be repeated until a satisfactory stand is established as determined by the authorized officer. Evaluation of growth will not be made before completion of at least one full growing season after seeding.

Species to be planted in pounds of pure live seed* per acre:

<u>Species</u>	<u>lb/acre</u>
Plains Bristlegrass (<i>Setaria magrostachya</i>)	1.0
Green Spangletop (<i>Leptochloa dubia</i>)	2.0
Side oats Grama (<i>Bouteloua curtipendula</i>)	5.0

*Pounds of pure live seed:

Pounds of seed x percent purity x percent germination = pounds pure live seed
(Insert Seed Mixture Here)

X. FINAL ABANDONMENT & REHABILITATION REQUIREMENTS

Upon abandonment of the well and/or when the access road is no longer in service the Authorized Officer shall issue instructions and/or orders for surface reclamation and restoration of all disturbed areas.

On private surface/federal mineral estate land the reclamation procedures on the road and well pad shall be accomplished in accordance with the private surface land owner agreement.