

District I
1625 N French Dr, Hobbs, NM 88240
District II
1301 W Grand Avenue, Artesia, NM 88210
District III
1000 Rio Brazos Road, Aztec, NM 87410
District IV
1220 S St Francis Dr, Santa Fe, NM 87505

State of New Mexico
Energy Minerals and Natural Resources
Department
Oil Conservation Division
1220 South St. Francis Dr.
Santa Fe, NM 87505

AUG 12 2009

Form C-144
July 21, 2008

For temporary pits, closed-loop systems, and below-grade tanks, submit to the appropriate NMOCD District Office
For permanent pits and exceptions submit to the Santa Fe Environmental Bureau office and provide a copy to the appropriate NMOCD District Office.

YPC
YPC
YPC

Pit, Closed-Loop System, Below-Grade Tank, or
Proposed Alternative Method Permit or Closure Plan Application

Type of action: ☐ Permit of a pit, closed-loop system, below-grade tank, or proposed alternative method
☒ Closure of a pit, closed-loop system, below-grade tank, or proposed alternative method
☐ Modification to an existing permit **X- Final Closure Report**
☐ Closure plan only submitted for an existing permitted or non-permitted pit, closed-loop system, below-grade tank, or proposed alternative method

Instructions: Please submit one application (Form C-144) per individual pit, closed-loop system, below-grade tank or alternative request

Please be advised that approval of this request does not relieve the operator of liability should operations result in pollution of surface water, ground water or the environment. Nor does approval relieve the operator of its responsibility to comply with any other applicable governmental authority's rules, regulations or ordinances

1
Operator: Yates Petroleum Corp. OGRID #: 025575
Address: 105 South 4th. Artesia N.M. 88210
Facility or well name Knoll AOK Fed. #2-H
API Number: 30-015-35108 OCD Permit Number: _____
U/L or Qtr/Qtr D Section 3 Township 24S Range 29E County: Eddy
Center of Proposed Design. Latitude N32.253083 Longitude W103.965444 NAD: ☒ 1927 ☐ 1983
Surface Owner: ☒ Federal ☐ State ☐ Private ☐ Tribal Trust or Indian Allotment

2.
☒ **Pit:** Subsection F or G of 19.15.17.11 NMAC
Temporary: ☐ Drilling ☒ Workover
☐ Permanent ☐ Emergency ☐ Cavitation ☐ P&A
☒ Lined ☐ Unlined Liner type: Thickness 20 mil ☒ LLDPE ☐ HDPE ☐ PVC ☐ Other _____
☐ String-Reinforced
Liner Seams: ☒ Welded ☒ Factory ☐ Other _____ Volume 13000 bbl Dimensions: L 150 x W 150 x D 6

3.
☐ **Closed-loop System:** Subsection H of 19.15.17.11 NMAC
Type of Operation. ☐ P&A ☐ Drilling a new well ☐ Workover or Drilling (Applies to activities which require prior approval of a permit or notice of intent)
☐ Drying Pad ☐ Above Ground Steel Tanks ☐ Haul-off Bins ☐ Other _____
☐ Lined ☐ Unlined Liner type: Thickness _____ mil ☐ LLDPE ☐ HDPE ☐ PVC ☐ Other _____
Liner Seams: ☐ Welded ☐ Factory ☐ Other _____

4
☐ **Below-grade tank:** Subsection I of 19.15.17.11 NMAC
Volume _____ bbl Type of fluid: _____
Tank Construction material: _____
☐ Secondary containment with leak detection ☐ Visible sidewalls, liner, 6-inch lift and automatic overflow shut-off
☐ Visible sidewalls and liner ☐ Visible sidewalls only ☐ Other _____
Liner type: Thickness _____ mil ☐ HDPE ☐ PVC ☐ Other _____

5.
☐ **Alternative Method:**
Submittal of an exception request is required. Exceptions must be submitted to the Santa Fe Environmental Bureau office for consideration of approval.

Form C-144
Final Closure Completion Date 5/7/09

Oil Conservation Division

Page 1 of 5

6

Fencing: Subsection D of 19.15.17.11 NMAC (*Applies to permanent pits, temporary pits, and below-grade tanks*)

- ☐ Chain link, six feet in height, two strands of barbed wire at top (*Required if located within 1000 feet of a permanent residence, school, hospital, institution or church*)
- ☐ Four foot height, four strands of barbed wire evenly spaced between one and four feet
- ☐ Alternate. Please specify _____

7

Netting: Subsection E of 19.15.17.11 NMAC (*Applies to permanent pits and permanent open top tanks*)

- ☐ Screen ☐ Netting ☐ Other _____
- ☐ Monthly inspections (If netting or screening is not physically feasible)

8.

Signs: Subsection C of 19.15.17.11 NMAC

- ☐ 12"x 24", 2" lettering, providing Operator's name, site location, and emergency telephone numbers
- ☐ Signed in compliance with 19.15.3.103 NMAC

9.

Administrative Approvals and Exceptions:

Justifications and/or demonstrations of equivalency are required. Please refer to 19.15.17 NMAC for guidance.

Please check a box if one or more of the following is requested, if not leave blank:

- ☐ Administrative approval(s): Requests must be submitted to the appropriate division district or the Santa Fe Environmental Bureau office for consideration of approval.
- ☐ Exception(s). Requests must be submitted to the Santa Fe Environmental Bureau office for consideration of approval

10

Siting Criteria (regarding permitting): 19.15.17.10 NMAC

Instructions: The applicant must demonstrate compliance for each siting criteria below in the application. Recommendations of acceptable source material are provided below. Requests regarding changes to certain siting criteria may require administrative approval from the appropriate district office or may be considered an exception which must be submitted to the Santa Fe Environmental Bureau office for consideration of approval. Applicant must attach justification for request. Please refer to 19.15.17.10 NMAC for guidance. Siting criteria does not apply to drying pads or above-grade tanks associated with a closed-loop system.

Ground water is less than 50 feet below the bottom of the temporary pit, permanent pit, or below-grade tank. - NM Office of the State Engineer - iWATERS database search, USGS; Data obtained from nearby wells	<input type="checkbox"/> Yes <input type="checkbox"/> No
Within 300 feet of a continuously flowing watercourse, or 200 feet of any other significant watercourse or lakebed, sinkhole, or playa lake (measured from the ordinary high-water mark) - Topographic map; Visual inspection (certification) of the proposed site	<input type="checkbox"/> Yes <input type="checkbox"/> No
Within 300 feet from a permanent residence, school, hospital, institution, or church in existence at the time of initial application. (Applies to temporary, emergency, or cavitation pits and below-grade tanks) - Visual inspection (certification) of the proposed site; Aerial photo; Satellite image	<input type="checkbox"/> Yes <input type="checkbox"/> No <input type="checkbox"/> NA
Within 1000 feet from a permanent residence, school, hospital, institution, or church in existence at the time of initial application. (Applies to permanent pits) - Visual inspection (certification) of the proposed site; Aerial photo; Satellite image	<input type="checkbox"/> Yes <input type="checkbox"/> No <input type="checkbox"/> NA
Within 500 horizontal feet of a private, domestic fresh water well or spring that less than five households use for domestic or stock watering purposes, or within 1000 horizontal feet of any other fresh water well or spring, in existence at the time of initial application. - NM Office of the State Engineer - iWATERS database search; Visual inspection (certification) of the proposed site	<input type="checkbox"/> Yes <input type="checkbox"/> No
Within incorporated municipal boundaries or within a defined municipal fresh water well field covered under a municipal ordinance adopted pursuant to NMSA 1978, Section 3-27-3, as amended. - Written confirmation or verification from the municipality; Written approval obtained from the municipality	<input type="checkbox"/> Yes <input type="checkbox"/> No
Within 500 feet of a wetland - US Fish and Wildlife Wetland Identification map; Topographic map, Visual inspection (certification) of the proposed site	<input type="checkbox"/> Yes <input type="checkbox"/> No
Within the area overlying a subsurface mine. - Written confirmation or verification or map from the NM EMNRD-Mining and Mineral Division	<input type="checkbox"/> Yes <input type="checkbox"/> No
Within an unstable area - Engineering measures incorporated into the design; NM Bureau of Geology & Mineral Resources; USGS; NM Geological Society; Topographic map	<input type="checkbox"/> Yes <input type="checkbox"/> No
Within a 100-year floodplain. - FEMA map	<input type="checkbox"/> Yes <input type="checkbox"/> No

11

Temporary Pits, Emergency Pits, and Below-grade Tanks Permit Application Attachment Checklist: Subsection B of 19.15.17.9 NMAC
Instructions: Each of the following items must be attached to the application. Please indicate, by a check mark in the box, that the documents are attached.

- ☐ Hydrogeologic Report (Below-grade Tanks) - based upon the requirements of Paragraph (4) of Subsection B of 19.15.17.9 NMAC
☐ Hydrogeologic Data (Temporary and Emergency Pits) - based upon the requirements of Paragraph (2) of Subsection B of 19.15.17.9 NMAC
☐ Siting Criteria Compliance Demonstrations - based upon the appropriate requirements of 19.15.17.10 NMAC
☐ Design Plan - based upon the appropriate requirements of 19.15.17.11 NMAC
☐ Operating and Maintenance Plan - based upon the appropriate requirements of 19.15.17.12 NMAC
☐ Closure Plan (Please complete Boxes 14 through 18, if applicable) - based upon the appropriate requirements of Subsection C of 19.15.17.9 NMAC and 19.15.17.13 NMAC
- ☐ Previously Approved Design (attach copy of design) API Number: _____ or Permit Number: _____

12.

Closed-loop Systems Permit Application Attachment Checklist: Subsection B of 19.15.17.9 NMAC

Instructions: Each of the following items must be attached to the application. Please indicate, by a check mark in the box, that the documents are attached.

- ☐ Geologic and Hydrogeologic Data (only for on-site closure) - based upon the requirements of Paragraph (3) of Subsection B of 19.15.17.9
☐ Siting Criteria Compliance Demonstrations (only for on-site closure) - based upon the appropriate requirements of 19.15.17.10 NMAC
☐ Design Plan - based upon the appropriate requirements of 19.15.17.11 NMAC
☐ Operating and Maintenance Plan - based upon the appropriate requirements of 19.15.17.12 NMAC
☐ Closure Plan (Please complete Boxes 14 through 18, if applicable) - based upon the appropriate requirements of Subsection C of 19.15.17.9 NMAC and 19.15.17.13 NMAC
- ☐ Previously Approved Design (attach copy of design) API Number: _____
- ☐ Previously Approved Operating and Maintenance Plan API Number: _____ (Applies only to closed-loop system that use above ground steel tanks or haul-off bins and propose to implement waste removal for closure)

13.

Permanent Pits Permit Application Checklist: Subsection B of 19.15.17.9 NMAC

Instructions: Each of the following items must be attached to the application. Please indicate, by a check mark in the box, that the documents are attached.

- ☐ Hydrogeologic Report - based upon the requirements of Paragraph (1) of Subsection B of 19.15.17.9 NMAC
☐ Siting Criteria Compliance Demonstrations - based upon the appropriate requirements of 19.15.17.10 NMAC
☐ Climatological Factors Assessment
☐ Certified Engineering Design Plans - based upon the appropriate requirements of 19.15.17.11 NMAC
☐ Dike Protection and Structural Integrity Design - based upon the appropriate requirements of 19.15.17.11 NMAC
☐ Leak Detection Design - based upon the appropriate requirements of 19.15.17.11 NMAC
☐ Liner Specifications and Compatibility Assessment - based upon the appropriate requirements of 19.15.17.11 NMAC
☐ Quality Control/Quality Assurance Construction and Installation Plan
☐ Operating and Maintenance Plan - based upon the appropriate requirements of 19.15.17.12 NMAC
☐ Freeboard and Overtopping Prevention Plan - based upon the appropriate requirements of 19.15.17.11 NMAC
☐ Nuisance or Hazardous Odors, including H₂S, Prevention Plan
☐ Emergency Response Plan
☐ Oil Field Waste Stream Characterization
☐ Monitoring and Inspection Plan
☐ Erosion Control Plan
☐ Closure Plan - based upon the appropriate requirements of Subsection C of 19.15.17.9 NMAC and 19.15.17.13 NMAC

14.

Proposed Closure: 19.15.17.13 NMAC

Instructions: Please complete the applicable boxes, Boxes 14 through 18, in regards to the proposed closure plan.

- Type: ☐ Drilling ☐ Workover ☐ Emergency ☐ Cavitation ☐ P&A ☐ Permanent Pit ☐ Below-grade Tank ☐ Closed-loop System
☐ Alternative
- Proposed Closure Method: ☐ Waste Excavation and Removal
☐ Waste Removal (Closed-loop systems only)
☐ On-site Closure Method (Only for temporary pits and closed-loop systems)
☐ In-place Burial ☐ On-site Trench Burial
☐ Alternative Closure Method (Exceptions must be submitted to the Santa Fe-Environmental Bureau for consideration)

15

Waste Excavation and Removal Closure Plan Checklist: (19.15.17.13 NMAC) *Instructions: Each of the following items must be attached to the closure plan. Please indicate, by a check mark in the box, that the documents are attached.*

- ☐ Protocols and Procedures - based upon the appropriate requirements of 19.15.17.13 NMAC
☐ Confirmation Sampling Plan (if applicable) - based upon the appropriate requirements of Subsection F of 19.15.17.13 NMAC
☐ Disposal Facility Name and Permit Number (for liquids, drilling fluids and drill cuttings)
☐ Soil Backfill and Cover Design Specifications - based upon the appropriate requirements of Subsection H of 19.15.17.13 NMAC
☐ Re-vegetation Plan - based upon the appropriate requirements of Subsection I of 19.15.17.13 NMAC
☐ Site Reclamation Plan - based upon the appropriate requirements of Subsection G of 19.15.17.13 NMAC

16.

Waste Removal Closure For Closed-loop Systems That Utilize Above Ground Steel Tanks or Haul-off Bins Only: (19.15.17.13 D NMAC)

Instructions: Please identify the facility or facilities for the disposal of liquids, drilling fluids and drill cuttings. Use attachment if more than two facilities are required.

Disposal Facility Name _____ Disposal Facility Permit Number: _____

Disposal Facility Name: _____ Disposal Facility Permit Number: _____

Will any of the proposed closed-loop system operations and associated activities occur on or in areas that *will not* be used for future service and operations?

☐ Yes (If yes, please provide the information below) ☐ No

Required for impacted areas which will not be used for future service and operations:

☐ Soil Backfill and Cover Design Specifications - based upon the appropriate requirements of Subsection H of 19.15.17.13 NMAC

☐ Re-vegetation Plan - based upon the appropriate requirements of Subsection I of 19.15.17.13 NMAC

☐ Site Reclamation Plan - based upon the appropriate requirements of Subsection G of 19.15.17.13 NMAC

17.

Siting Criteria (regarding on-site closure methods only): 19.15.17.10 NMAC

Instructions: Each siting criteria requires a demonstration of compliance in the closure plan. Recommendations of acceptable source material are provided below. Requests regarding changes to certain siting criteria may require administrative approval from the appropriate district office or may be considered an exception which must be submitted to the Santa Fe Environmental Bureau office for consideration of approval. Justifications and/or demonstrations of equivalency are required. Please refer to 19.15.17.10 NMAC for guidance.

Ground water is less than 50 feet below the bottom of the buried waste.

- NM Office of the State Engineer - iWATERS database search; USGS; Data obtained from nearby wells

☐ Yes ☐ No
☐ NA

Ground water is between 50 and 100 feet below the bottom of the buried waste

- NM Office of the State Engineer - iWATERS database search; USGS; Data obtained from nearby wells

☐ Yes ☐ No
☐ NA

Ground water is more than 100 feet below the bottom of the buried waste

- NM Office of the State Engineer - iWATERS database search; USGS; Data obtained from nearby wells

☐ Yes ☐ No
☐ NA

Within 300 feet of a continuously flowing watercourse, or 200 feet of any other significant watercourse or lakebed, sinkhole, or playa lake (measured from the ordinary high-water mark).

- Topographic map; Visual inspection (certification) of the proposed site

☐ Yes ☐ No

Within 300 feet from a permanent residence, school, hospital, institution, or church in existence at the time of initial application.

- Visual inspection (certification) of the proposed site; Aerial photo; Satellite image

☐ Yes ☐ No

Within 500 horizontal feet of a private, domestic fresh water well or spring that less than five households use for domestic or stock watering purposes, or within 1000 horizontal feet of any other fresh water well or spring, in existence at the time of initial application.

- NM Office of the State Engineer - iWATERS database; Visual inspection (certification) of the proposed site

☐ Yes ☐ No

Within incorporated municipal boundaries or within a defined municipal fresh water well field covered under a municipal ordinance adopted pursuant to NMSA 1978, Section 3-27-3, as amended.

- Written confirmation or verification from the municipality; Written approval obtained from the municipality

☐ Yes ☐ No

Within 500 feet of a wetland.

- US Fish and Wildlife Wetland Identification map; Topographic map; Visual inspection (certification) of the proposed site

☐ Yes ☐ No

Within the area overlying a subsurface mine.

- Written confirmation or verification or map from the NM EMNRD-Mining and Mineral Division

☐ Yes ☐ No

Within an unstable area.

- Engineering measures incorporated into the design, NM Bureau of Geology & Mineral Resources; USGS; NM Geological Society, Topographic map

☐ Yes ☐ No

Within a 100-year floodplain.

- FEMA map

☐ Yes ☐ No

18.

On-Site Closure Plan Checklist: (19.15.17.13 NMAC) **Instructions:** Each of the following items must be attached to the closure plan. Please indicate, by a check mark in the box, that the documents are attached.

☐ Siting Criteria Compliance Demonstrations - based upon the appropriate requirements of 19.15.17.10 NMAC

☐ Proof of Surface Owner Notice - based upon the appropriate requirements of Subsection F of 19.15.17.13 NMAC

☐ Construction/Design Plan of Burial Trench (if applicable) based upon the appropriate requirements of 19.15.17.11 NMAC

☐ Construction/Design Plan of Temporary Pit (for in-place burial of a drying pad) - based upon the appropriate requirements of 19.15.17.11 NMAC

☐ Protocols and Procedures - based upon the appropriate requirements of 19.15.17.13 NMAC

☐ Confirmation Sampling Plan (if applicable) - based upon the appropriate requirements of Subsection F of 19.15.17.13 NMAC

☐ Waste Material Sampling Plan - based upon the appropriate requirements of Subsection F of 19.15.17.13 NMAC

☐ Disposal Facility Name and Permit Number (for liquids, drilling fluids and drill cuttings or in case on-site closure standards cannot be achieved)

☐ Soil Cover Design - based upon the appropriate requirements of Subsection H of 19.15.17.13 NMAC

☐ Re-vegetation Plan - based upon the appropriate requirements of Subsection I of 19.15.17.13 NMAC

☐ Site Reclamation Plan - based upon the appropriate requirements of Subsection G of 19.15.17.13 NMAC

19.

Operator Application Certification:

I hereby certify that the information submitted with this application is true, accurate and complete to the best of my knowledge and belief.

Name (Print): _____ Title _____

Signature: _____ Date: _____

e-mail address: _____ Telephone: _____

20.

OCD Approval: ☐ Permit Application (including closure plan) ☒ Closure Plan (only) ☒ OCD Conditions (see attachment)

OCD Representative Signature: _____ Mike Bratcher _____ Approval Date: Dec. 15- 2008

Title: _____ OCD Permit Number: _____

21.

Closure Report (required within 60 days of closure completion): Subsection K of 19.15.17.13 NMAC

Instructions: Operators are required to obtain an approved closure plan prior to implementing any closure activities and submitting the closure report. The closure report is required to be submitted to the division within 60 days of the completion of the closure activities. Please do not complete this section of the form until an approved closure plan has been obtained and the closure activities have been completed.

☒ Closure Completion Date: 5-7-09

22.

Closure Method:

☒ Waste Excavation and Removal ☐ On-Site Closure Method ☐ Alternative Closure Method ☐ Waste Removal (Closed-loop systems only)
☐ If different from approved plan, please explain.

23.

Closure Report Regarding Waste Removal Closure For Closed-loop Systems That Utilize Above Ground Steel Tanks or Haul-off Bins Only:

Instructions: Please identify the facility or facilities for where the liquids, drilling fluids and drill cuttings were disposed. Use attachment if more than two facilities were utilized.

Disposal Facility Name: _____ Disposal Facility Permit Number: _____

Disposal Facility Name: _____ Disposal Facility Permit Number: _____

Were the closed-loop system operations and associated activities performed on or in areas that *will not* be used for future service and operations?

☐ Yes (If yes, please demonstrate compliance to the items below) ☐ No

Required for impacted areas which will not be used for future service and operations

- ☐ Site Reclamation (Photo Documentation)
☐ Soil Backfilling and Cover Installation
☐ Re-vegetation Application Rates and Seeding Technique

24.

Closure Report Attachment Checklist: *Instructions: Each of the following items must be attached to the closure report. Please indicate, by a check mark in the box, that the documents are attached.*

- ☒ Proof of Closure Notice (surface owner and division) O.K. by phone 12-23-08
☐ Proof of Deed Notice (required for on-site closure)
☐ Plot Plan (for on-site closures and temporary pits)
☒ Confirmation Sampling Analytical Results (if applicable)
☐ Waste Material Sampling Analytical Results (required for on-site closure)
☒ Disposal Facility Name and Permit Number CRI R91CC
☒ Soil Backfilling and Cover Installation Onsite & Caliche from Lea Land 2
☒ Re-vegetation Application Rates and Seeding Technique Seed drill- BLM # 2 seed 8-6-09 40lbs.
☐ Site Reclamation (Photo Documentation)

On-site Closure Location Latitude _____ Longitude _____ NAD: ☐ 1927 ☐ 1983

25.

Operator Closure Certification:

I hereby certify that the information and attachments submitted with this closure report is true, accurate and complete to the best of my knowledge and belief. I also certify that the closure complies with all applicable closure requirements and conditions specified in the approved closure plan.

Name (Print): Scott Pitts Title: Construction Supervisor

Signature:  Date: 8-5-09

e-mail address: scottp@yatespetroleum.com Telephone: (575)-365-4716

Accepted for record
 NMOCD

AUG 20 2009

Scott Pitts

From: Scott Pitts
Sent: Wednesday, December 03, 2008 3:20 PM
To: 'Mike Bratcher (mbratcher@state.nm.us)'
Cc: Tim Bussell; Jerry Fanning; Mike Larkin
Subject: Knoll AOK Fed. 2-H

Mr. Bratcher,

I would like to request an extension to complete the closure of this reserve pit. We are working on it now , but our six mos. After rig release is 12-10-08, and that may be a little close. I believe a 30 day extension will be ample time. I appreciate your consideration in this matter. Also a return E-mail would be great so I can complete my paper trail.

Knoll AOK Fed. 2-H Sec.3- T24S- R29E Eddy Co. API# 30—015-35108

Thank-You Scott Pitts construction supervisor Yates Petroleum Corp.

12/3/2008

Mr. Bratcher, 1-5-09 9:30 am.

I would like to notify you of my intent to take soil samples from the cleaned out reserve pit at the Knoll AOK fed. 2H

Sec. 3- T24S- R29E- Eddy Co. API# 30-015-35108. I will do this wed. 1-7-09 at 11:00 am.

Thank you

Scott Pitts

Construction Supervisor

Yates Petroleum Corp.

(Type Well Name & Legal Description)

Rig Release Date: 6/19/08 released from knoll

Pit must be inspected daily while drilling rig on location, weekly if liner is torn-either above or below fluid level, NMOCD must be Document the name of the person you notified.
Berm to be constructed to prevent run on of fluids into pit.

DATE:	INSPECTED BY:	HOLE SIZE:	DEPTH	PIT LEVEL <small>1 1/2" 1 1/2"</small> READING	FLUID ADDITIONS	MINIMUM		LINER INTEGRITY		BERM INTEGRITY		FENCE INTEGRITY	
						YES	NO	YES	NO	YES	NO	YES	NO
6/25	Adam Cunyus	7 7/8"	11861	2 ft	N/A	✓		✓		✓		✓	
7/4	Adam Cunyus	7 7/8"	11861	6 ft	N/A	✓		✓		✓		✓	
7/9	Adam	7 7/8"	11861	✓	N/A	✓		✓		✓		✓	
7/16	Adam	7 7/8"	11861	✓	N/A	✓		✓		✓		✓	
Pits dried and ready to be released to environmental													



PHONE (575) 393-2326 • 101 E. MARLAND • HOBBS, NM 88240

ANALYTICAL RESULTS FOR
YATES PETROLEUM CORPORATION
ATTN: SCOTT PITTS
105 SOUTH 4TH STREET
ARTESIA, NM 88210
FAX TO: (575) 748-4635

Receiving Date: 01/23/09
Reporting Date: 01/28/09
Project Owner: YPC
Project Name: KNOLL AOK FED #2H
Project Location: NOT GIVEN


Analysis Date: 01/25/09
Sampling Date: 01/21/09
Sample Type: SOIL
Sample Condition: INTACT
Sample Received By: ML
Analyzed By: HM

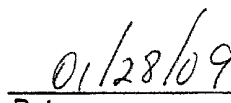
LAB NUMBER	SAMPLE ID	Cl ⁻ (mg/kg)
H16749-1	SURFACE GRAB NE#1 10' ↓ G/L	272
H16749-2	5 SPOT 9' ↓ G/L #2	1,570
H16749-3	NE 14' BGS	992
H16749-4	NE 20' BGS	1,060
H16749-5	NE 35' BGS	96
H16749-6	NE 40' BGS	64
H16749-7	NE 45' BGS	80
Quality Control		500
True Value QC		500
% Recovery		100
Relative Percent Difference		< 0.1

METHOD: Standard Methods

4500-Cl⁻B

Note: Analyses performed on 1:4 w:v aqueous extracts.


Chemist


Date

H16749 YATES

PLEASE NOTE Liability and Damages. Cardinal's liability and client's exclusive remedy for any claim arising, whether based in contract or tort, shall be limited to the amount paid by client for analyses. All claims, including those for negligence and any other cause whatsoever shall be deemed waived unless made in writing and received by Cardinal within thirty (30) days after completion of the applicable service. In no event shall Cardinal be liable for incidental or consequential damages, including, without limitation, business interruptions, loss of use, or loss of profits incurred by client, its subsidiaries, affiliates or successors arising out of or related to the performance of services hereunder by Cardinal, regardless of whether such claim is based upon any of the above-stated reasons or otherwise. Result relate only to the samples identified above. This report shall not be reproduced except in full with written approval of Cardinal Laboratories.



ARDINAL LABORATORIES

PHONE (575) 393-2326 • 101 E. MARLAND • HOBBS, NM 88240

ANALYTICAL RESULTS FOR
YATES PETROLEUM CORPORATION
ATTN: SCOTT PITTS
105 SOUTH 4TH STREET
ARTESIA, NM 88210
FAX TO: (575) 748-4229

Receiving Date: 01/23/09
Reporting Date: 01/27/09
Project Owner: YPC
Project Name: KNOLL AOK FED #2H
Project Location: NOT GIVEN

Sampling Date: 01/21/09
Sample Type: SOIL
Sample Condition: INTACT
Sample Received By: ML
Analyzed By: AB

LAB NUMBER	SAMPLE ID	GRO	DRO	418.1
		(C ₆ -C ₁₀)	(>C ₁₀ -C ₂₈)	TOTAL
		(mg/kg)	(mg/kg)	TPH
				(mg/kg)
ANALYSIS DATE		01/27/09	01/27/09	01/27/09
H16749-1	SURFACE GRAB NE#1 10' ↓ G/L	<10.0	<10.0	<100
H16749-2	5 SPOT 9' ↓ G/L #2	<10.0	<10.0	<100
Quality Control		450	513	324
True Value QC		500	500	300
% Recovery		90.0	103	108
Relative Percent Difference		4.3	2.4	2.4

METHODS: TPH GRO & DRO: EPA SW-846 8015 M; EPA 418.1


Chemist


Date

H16749 TPH2 YATES

PLEASE NOTE **Liability and Damages.** Cardinal's liability and client's exclusive remedy for any claim arising, whether based in contract or tort, shall be limited to the amount paid by client for analyses. All claims, including those for negligence and any other cause whatsoever shall be deemed waived unless made in writing and received by Cardinal within thirty (30) days after completion of the applicable service. In no event shall Cardinal be liable for incidental or consequential damages, including, without limitation, business interruptions, loss of use, or loss of profits incurred by client, its subsidiaries, affiliates or successors arising out of or related to the performance of services hereunder by Cardinal, regardless of whether such claim is based upon any of the above-stated reasons or otherwise. Results relate only to the samples identified above. This report shall not be reproduced except in full with written approval of Cardinal Laboratories.



ARDINAL LABORATORIES

PHONE (575) 393-2326 • 101 E. MARLAND • HOBBS, NM 88240

ANALYTICAL RESULTS FOR
YATES PETROLEUM CORPORATION
ATTN: SCOTT PITTS
105 SOUTH 4TH STREET
ARTESIA, NM 88210
FAX TO: (575) 748-4229

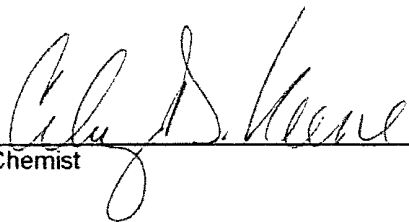
Receiving Date: 01/23/09
Reporting Date: 01/26/09
Project Owner: YPC
Project Name: KNOLL AOK FED #2H
Project Location: NOT GIVEN

Sampling Date: 01/21/09
Sample Type: SOIL
Sample Condition: INTACT
Sample Received By: ML
Analyzed By: ZL

LAB NUMBER	SAMPLE ID	ETHYL TOTAL			
		BENZENE	TOLUENE	BENZENE	XYLENES
		(mg/kg)	(mg/kg)	(mg/kg)	(mg/kg)
ANALYSIS DATE		01/24/09	01/24/09	01/24/09	01/24/09
H16749-1	SURFACE GRAB NE#1 10' ↓ G/L	<0.050	<0.050	<0.050	<0.150
H16749-2	5 SPOT 9' ↓ G/L #2	<0.050	<0.050	<0.050	<0.150
Quality Control		0.055	0.056	0.055	0.162
True Value QC		0.050	0.050	0.050	0.150
% Recovery		110	112	110	108
Relative Percent Difference		3.1	<1.0	<1.0	2.4

METHOD: EPA SW-846 8021B

TEXAS NELAP CERTIFICATION T104704398-08-TX FOR BENZENE, TOLUENE, ETHYL BENZENE,
AND TOTAL XYLENES.



Chemist

01/28/09

Date

PLEASE NOTE: **Liability and Damages.** Cardinal's liability and client's exclusive remedy for any claim arising, whether based in contract or tort, shall be limited to the amount paid by client for analyses. All claims for damages, including but not limited to consequential damages, shall be deemed waived unless made in writing and received by Cardinal within thirty (30) days after completion of the applicable service. In no event shall Cardinal be liable for incidental or consequential damages, including, without limitation, business interruptions, loss of use, or loss of profits incurred by client, its subsidiaries, affiliates or successors arising out of or related to the performance of services hereunder by Cardinal, regardless of whether such claim is based upon any of the above-stated reasons or otherwise. Results relate only to the samples identified above. This report shall not be reproduced except in full with written approval of Cardinal Laboratories.



CARDINAL LABORATORIES

101 East Marland, Hobbs, NM 88240
(575) 393-2326 Fax (575) 393-2476

E-mail scottp@yatespetroleum.com

Page ____ of ____

Company Name: Yates Petroleum		BILL TO		ANALYSIS REQUEST											
Project Manager: Scott P. Hs		P.O. #: 103-2542		<div style="display: flex; flex-direction: column; align-items: center;"> <div style="writing-mode: vertical-rl; transform: rotate(180deg);">B-Tex 8021B</div> <div style="writing-mode: vertical-rl; transform: rotate(180deg);">TPH 41801</div> <div style="writing-mode: vertical-rl; transform: rotate(180deg);">TPH 8015M</div> <div style="writing-mode: vertical-rl; transform: rotate(180deg);">Chlorides 30001</div> </div>											
Address: 105 S. 4th		Company: SAME													
City: Artesia State: NM Zip: 88210		Attn:													
Phone #: 575-365-4716 Fax #: 575-748-4229		Address:													
Project #: _____ Project Owner: YPC		City:													
Project Name: Knoll AOK Fed #24		State: _____ Zip: _____													
Project Location: _____		Phone #: _____													
Sampler Name: Scott P. Hs		Fax #: _____													

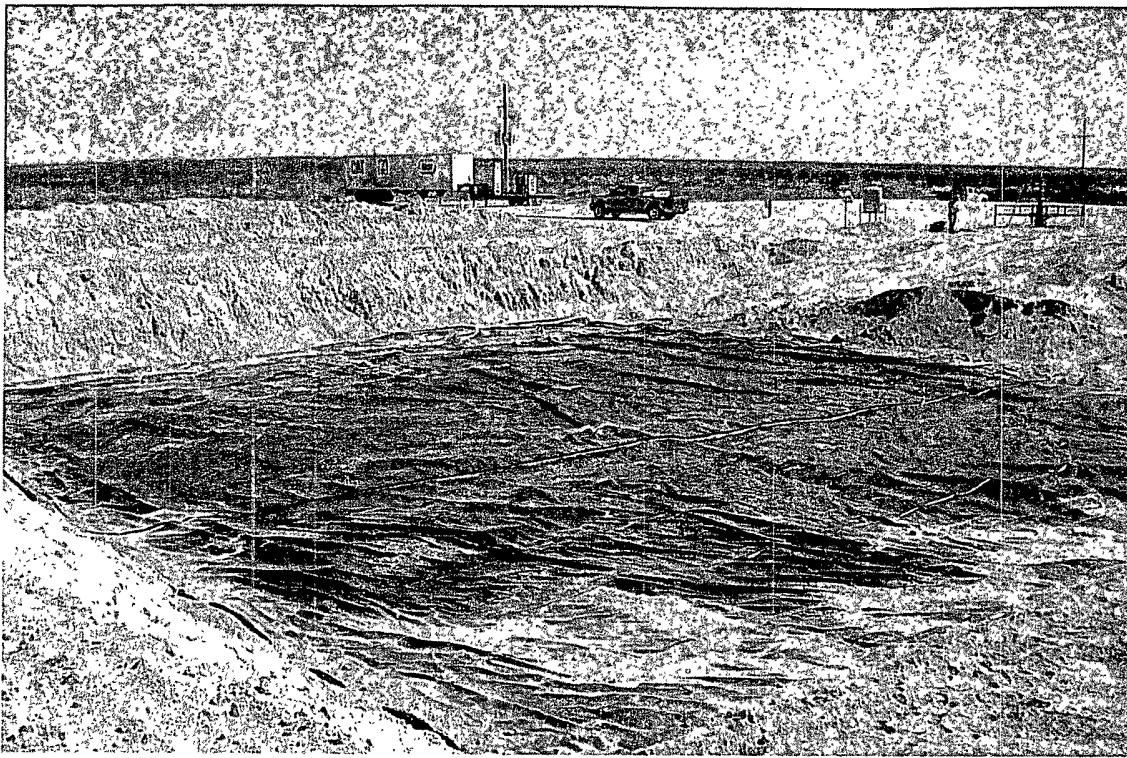
FOR LAB USE ONLY		Lab I.D.	Sample I.D.	(G/RAB OR C/JOMP) # CONTAINERS	MATRIX					PRESERV		SAMPLING													
					GROUNDWATER	WASTEWATER	SOIL	OIL	SLUDGE	OTHER	ACID/BASE	ICE/COOL	OTHER	DATE	TIME										
-1		H16749-1	Surface Brab NE#1 10' 1/2"	1			✓				✓			1-21-09	2:00	✓	✓	✓	✓						
-2			5 SPOT 9' 1/4" G/L #2	2			✓				✓			"	"	✓	✓	✓	✓						
-3			5 Chlorides Only								✓			✓	✓										
-4			14' NE Corner Varying Depths NE 1/4 BGS								✓														
-5			NE 20' BGS																						
-6			NE 35' BGS																						
-7			NE 40' "																						
-8			NE 45' "																						

PLEASE NOTE: Liability and Damages: Cardinal's liability and clients exclusive remedy for any claim arising whether based in contract or tort, shall be limited to the amount paid by the client for the analysis. No claims including those for negligence and any other cause whatsoever shall be deemed waived unless made in writing and received by Cardinal within 30 days after completion of the applicable service. In no event shall Cardinal be liable for incidental or consequential damages including without limitation business interruptions, loss of use, or loss of profits incurred by client, its subsidiaries, or other persons claiming through or by way of derivation to the performance of services hereunder by Cardinal, regardless of whether such claim is based upon any of the above stated reasons or otherwise.

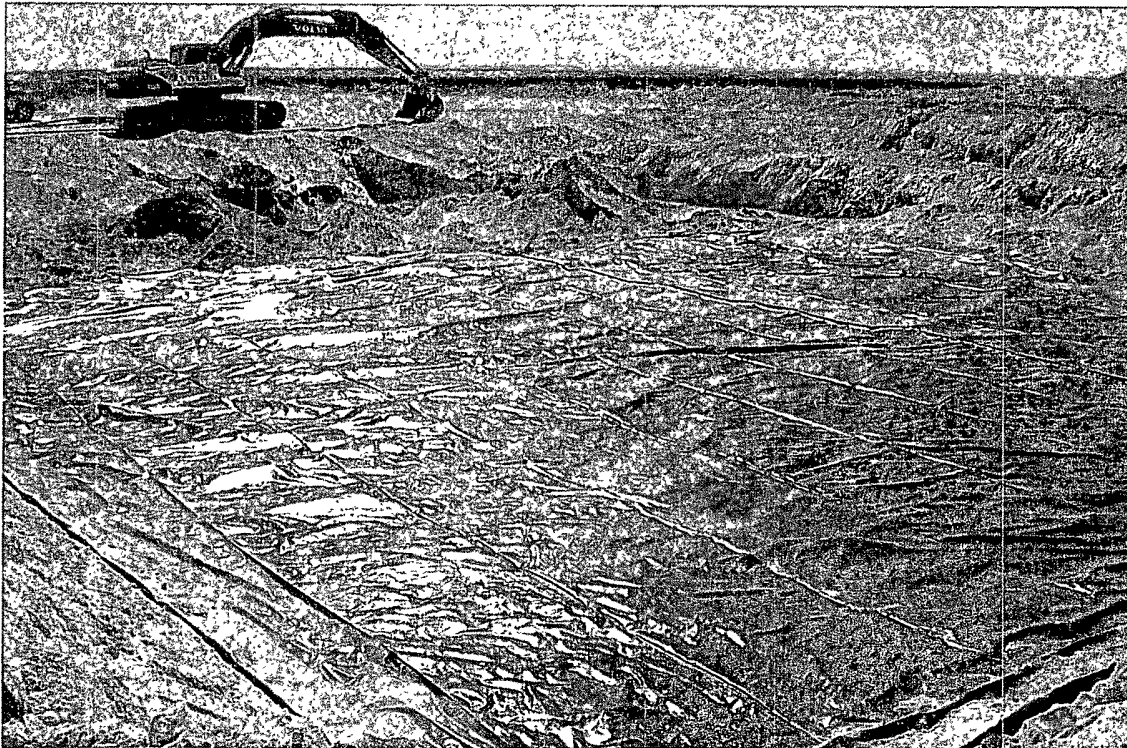
Terms and Conditions: Interest will be charged on all accounts more than 30 days past due at the rate of 24% per annum from the original date of invoice, and all costs of collections, including attorney's fees.

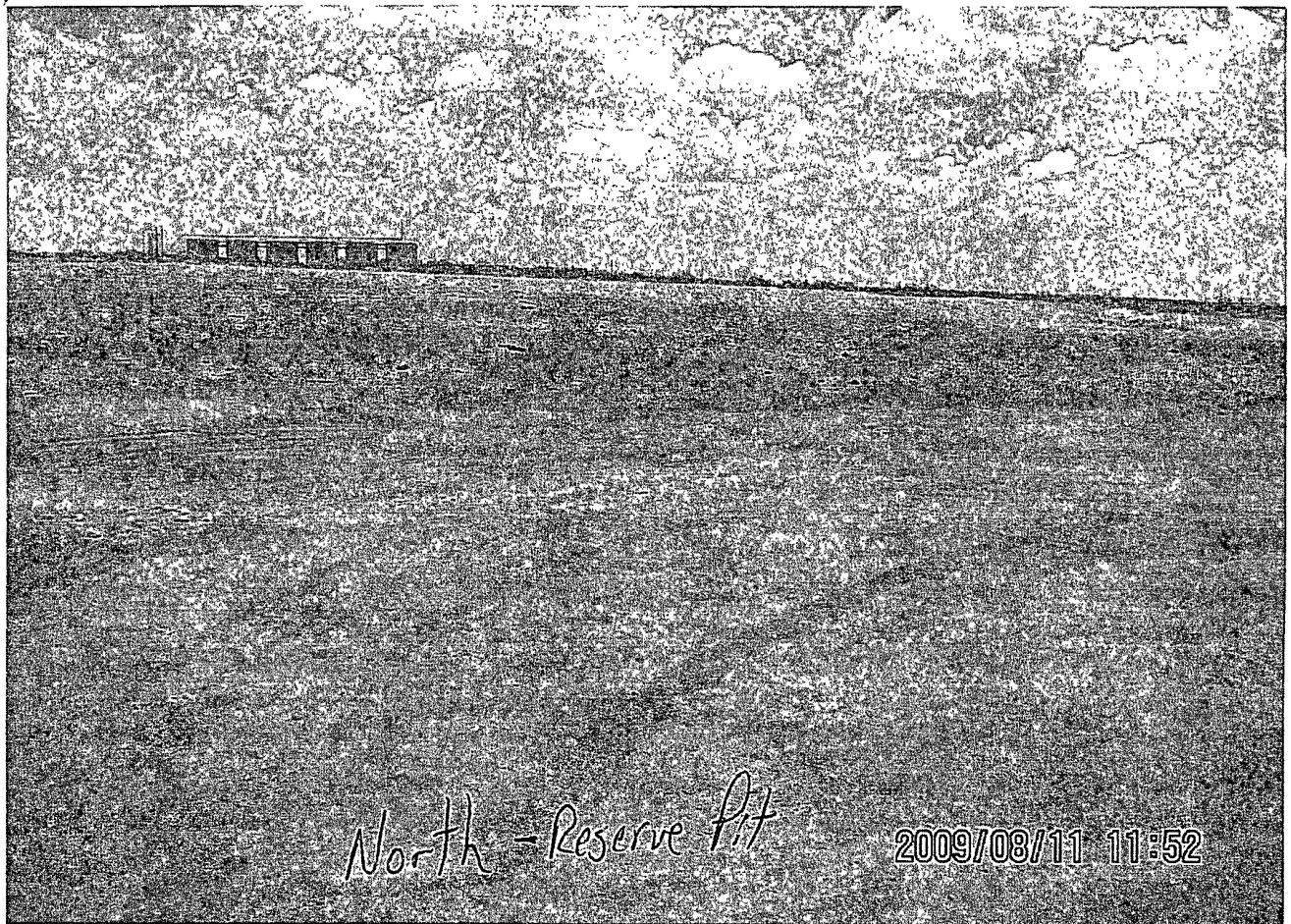
Sampler Relinquished By:		Date: 1-22-09	Received By:	Date: 1-23-09	Phone Result: <input type="checkbox"/> No	Add'l Phone #: _____
Time: 4:00				Time: 2:00	Fax Result: <input type="checkbox"/> No	Add'l Fax #: _____
Relinquished By: _____		Date: _____	Received By: _____		REMARKS:	
Time: _____						
Delivered By: (Circle One) FedEx		Temp. _____	Sample Condition: Cool Intact: <input type="checkbox"/> Yes <input checked="" type="checkbox"/> No	CHECKED BY:		
Sampler - UPS - Bus - Other: _____						

† Cardinal cannot accept verbal changes. Please fax written changes to 575-393-2476.



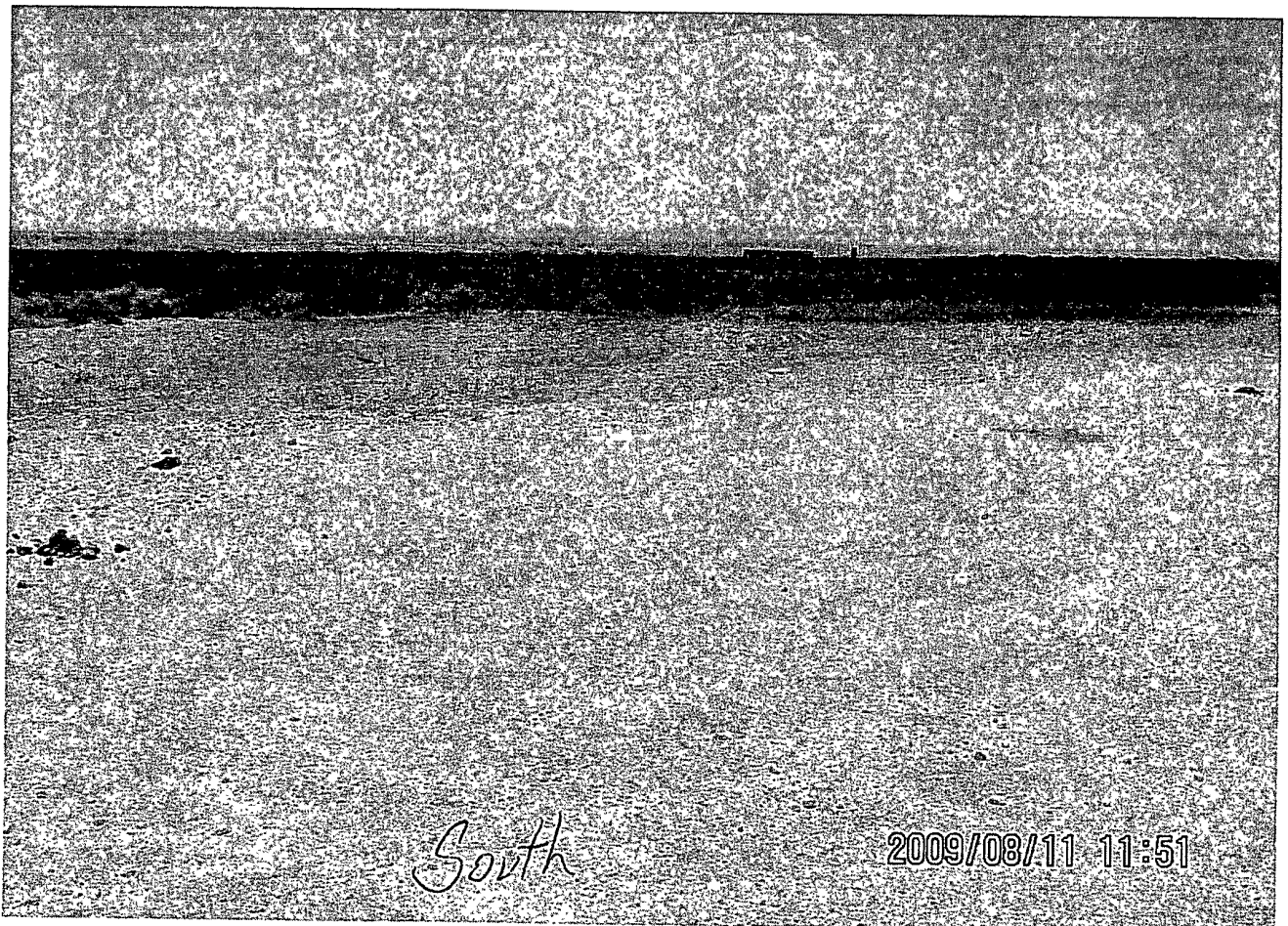
Documentation for
PIT Lining of KNOLL
AOK #2
(prior to back-fill)
N.E. 1/4 OF Pit.





North - Reserve Pit

2009/08/11 11:52



South

2009/08/11 11:51

