

DISTRICT I
1626 N. FRENCH DR., HOHRS. NM 86240

DISTRICT II
1301 W. GRAND AVENUE, ARTESIA, NM 86210

DISTRICT III
1000 Rio Brazos Rd., Aztec, NM 87410

DISTRICT IV
1220 S. ST. FRANCIS DR., SANTA FE, NM 87505

State of New Mexico
Energy, Minerals and Natural Resources Department

OIL CONSERVATION DIVISION

1220 SOUTH ST. FRANCIS DR.
Santa Fe, New Mexico 87505

Form C-102
Revised October 12, 2005
Submit to Appropriate District Office
State Lease - 4 Copies
Fee Lease - 3 Copies

WELL LOCATION AND ACREAGE DEDICATION PLAT

☐ AMENDED REPORT

API Number	Pool Code 96086	Pool Name Wildcat Wolfcamp
Property Code 36904	Property Name OILERS FEDERAL	Well Number 2
GRID No. 013837	Operator Name MACK ENERGY CORPORATION	Elevation 3699'

Surface Location

UL or lot No.	Section	Township	Range	Lot Idn	Feet from the	North/South line	Feet from the	East/West line	County
I	9	16-S	29-E		2310	SOUTH	330	EAST	EDDY

Bottom Hole Location If Different From Surface

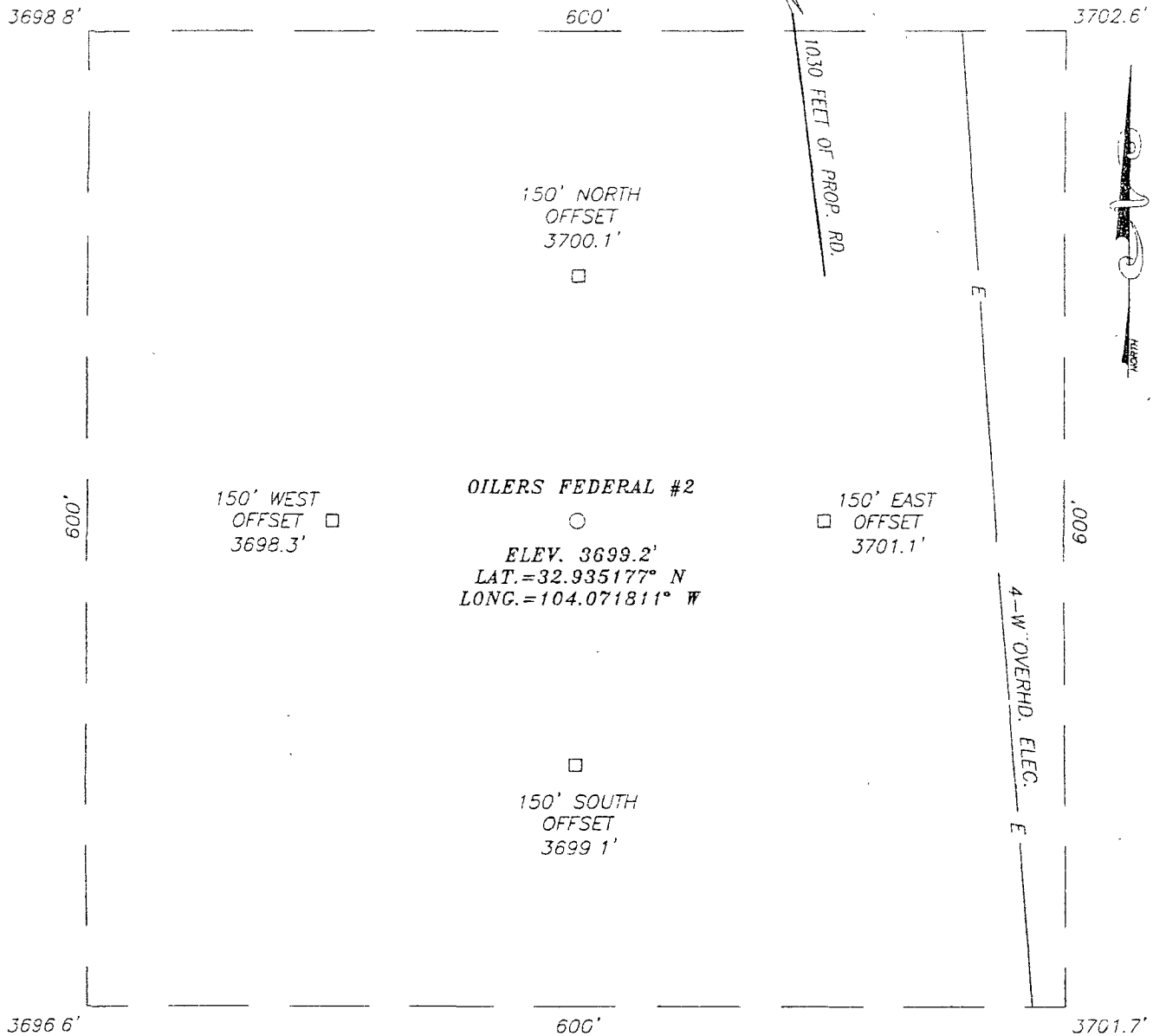
UL or lot No.	Section	Township	Range	Lot Idn	Feet from the	North/South line	Feet from the	East/West line	County
L	9	16-S	29-E		2285	SOUTH	330	WEST	EDDY

Dedicated Acres	Joint or Infill	Consolidation Code	Order No.
160			

NO ALLOWABLE WILL BE ASSIGNED TO THIS COMPLETION UNTIL ALL INTERESTS HAVE BEEN CONSOLIDATED
OR A NON-STANDARD UNIT HAS BEEN APPROVED BY THE DIVISION.

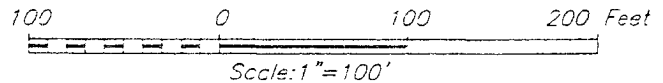
<p>DETAIL</p> <p>3698.8' 3702.5'</p> <p>600' O</p> <p>3696.6' 3701.7'</p> <p>330' BHL</p> <p>GRID AZ -269°30'24"</p> <p>HORIZ DIST -4624'</p> <p>SEE DETAIL</p> <p>330' SL</p> <p>BOTTOM HOLE LOCATION</p> <p>Y=703989.0 N</p> <p>X=575614.2 E</p> <p>GEODETIC COORDINATES</p> <p>NAD 27 NME</p> <p>SURFACE LOCATION</p> <p>Y=704028.8 N</p> <p>X=580237.2 E</p> <p>LAT.=32 935177" N</p> <p>LONG =104 071811" W</p>	<p>OPERATOR CERTIFICATION</p> <p>I hereby certify that the information herein is true and complete to the best of my knowledge and belief, and that this organization either owns a working interest or unleased mineral interest in the land including the proposed bottom hole location or has a right to drill this well at this location pursuant to a contract with an owner of such mineral or working interest, or to a voluntary pooling agreement or a compulsory pooling order heretofore entered by the division.</p> <p><i>Jerry W. Sherrell</i> 10/17/07</p> <p>Signature Date</p> <p>Jerry W. Sherrell</p> <p>Printed Name</p> <p>SURVEYOR CERTIFICATION</p> <p>I hereby certify that the well location shown on this plat was plotted from field notes of actual surveys made by me or under my supervision, and that the same is true and correct to the best of my belief.</p> <p>SEPTEMBER 19, 2007</p> <p>Date Surveyed DSS</p> <p>Signature & Seal of Professional Surveyor</p> <p>3239</p> <p>RONALD EIDSON 9/27/07</p> <p>Certificate No. GARY EIDSON 12641</p> <p>RONALD EIDSON 3239</p>
--	---

SECTION 9, TOWNSHIP 16 SOUTH, RANGE 29 EAST, N.M.P.M.,
EDDY COUNTY, NEW MEXICO



DIRECTIONS TO LOCATION

FROM THE INTERSECTION OF U.S HWY. #82 AND
CO RD. #214 (BARNAVAL DRAW RD.), GO NORTH
ON CO RD. #214 APPROX 6.2 MILES. TURN
RIGHT AT "Y" INTERSECTION AND GO APPROX. 0.6
MILES. TURN LEFT AT "Y" INTERSECTION AND GO
APPROX. 1.3 MILES TO OILERS FEDERAL #3 WELL
FOLLOW STAKED ROAD SOUTH 1030 FEET TO THIS
LOCATION.



PROVIDING SURVEYING SERVICES
SINCE 1946
JOHN WEST SURVEYING COMPANY
412 N. DAL PASO
HOBBS, N.M. 88240
(505) 393-3117

MACK ENERGY CORPORATION

OILERS FEDERAL #2 WELL
LOCATED 2310 FEET FROM THE SOUTH LINE
AND 330 FEET FROM THE EAST LINE OF SECTION 9,
TOWNSHIP 16 SOUTH, RANGE 29 EAST, N.M.P.M.,
EDDY COUNTY, NEW MEXICO
29 X 29

Survey Date: 09/10/07	Sheet 1 of 1 Sheets
W.O. Number: 07111198	Dr By: DSS
Date: 09/25/07	Rev 1 N/A
Disk: 07111198	Scale: 1"=100'