

District I
1625 N French Dr, Hobbs, NM 88240
District II
1301 W. Grand Ave., Artesia, NM 88210
District III
1000 Rio Brazos Rd, Aztec, NM 87410
District IV
1220 S. St Francis Dr., Santa Fe, NM 87505

OIL CONSERVATION DIVISION
1220 South St. Francis Dr.
Santa Fe, NM 87505

WELL API NO. 30-015-26115
5. Indicate Type of Lease STATE <input checked="" type="checkbox"/> FEE <input type="checkbox"/>
6. State Oil & Gas Lease No. K-6385
7. Lease Name or Unit Agreement Name Catchlaw AGM State Com
8. Well Number 1
9. OGRID Number 025575
10. Pool name or Wildcat North Dagger Draw Upper Penn

<p>SUNDRY NOTICES AND REPORTS ON WELLS (DO NOT USE THIS FORM FOR PROPOSALS TO DRILL OR TO DEEPEN OR PLUG BACK TO A DIFFERENT RESERVOIR USE "APPLICATION FOR PERMIT" (FORM C-101) FOR SUCH PROPOSALS.)</p>	
1. Type of Well: Oil Well <input checked="" type="checkbox"/> Gas Well <input type="checkbox"/> Other <input type="checkbox"/>	<div style="border: 2px solid black; padding: 5px; text-align: center;"> <p>RECEIVED</p> <p>OCT 21 2009</p> <p>NMOCD ARTESIA</p> </div>
2. Name of Operator Yates Petroleum Corporation	
3. Address of Operator 105 South Fourth Street, Artesia, NM 88210	
4. Well Location Unit Letter <u>F</u> : <u>1980</u> feet from the <u>North</u> line and <u>1980</u> feet from the <u>West</u> line Section <u>2</u> Township <u>20S</u> Range <u>24E</u> NMPM <u>Eddy</u> County	
11. Elevation (Show whether DR, RKB, RT, GR, etc.) 3658'GR	

12. Check Appropriate Box to Indicate Nature of Notice, Report or Other Data

NOTICE OF INTENTION TO:

PERFORM REMEDIAL WORK ☐ PLUG AND ABANDON ☒
 TEMPORARILY ABANDON ☐ CHANGE PLANS ☐
 PULL OR ALTER CASING ☐ MULTIPLE COMPL ☐
 DOWNHOLE COMMINGLE ☐
 OTHER: ☐

SUBSEQUENT REPORT OF:

REMEDIAL WORK ☐ ALTERING CASING ☐
 COMMENCE DRILLING OPNS. ☐ P AND A ☐
 CASING/CEMENT JOB ☐
 OTHER: ☐

13. Describe proposed or completed operations. (Clearly state all pertinent details, and give pertinent dates, including estimated date of starting any proposed work). SEE RULE 1103. For Multiple Completions: Attach wellbore diagram of proposed completion or recompletion.

Yates Petroleum Corporation plans to plug and abandon this well as follows:

1. MIRU WSU NU BOP RU all safety equipment as needed. No casing recovery will be attempted. POOH with tubing.
2. Pump 50 bbls mud laden fluid. Spot a 40 sx Class "H" cement plug from 8906'-9126'. WOC and tag plug. If necessary, reset the plug. This will place a plug across the Morrow top.
3. Set a CIBP at 7638' with 35' cement on top. This will seal off the Canyon perforations.
4. Load hole with plugging mud. Spot a 60 sx Class "C" cement plug from 5296'-5654'. WOC and tag plug. If necessary, reset the plug. This will place a plug across the stage tool and the Wolfcamp top.
5. Load hole with plugging mud. Spot a 25 sx Class "C" cement plug from 3185'-3335'. WOC and tag plug. If necessary, reset the plug. This will place a plug across the Bone Spring top.
6. Load hole with plugging mud. Spot a 25-sx Class "C" cement plug from 1796'-1946'. WOC and tag plug. If necessary, reset the plug. This will place a plug across the Glorietta top.
7. Load hole with plugging mud. Spot a 25 sx Class "C" cement plug from 1110'-1260'. WOC and tag plug. If necessary, reset the plug. This will place a plug across the surface casing shoe.
8. Load hole with plugging mud. Spot a 25 sx Class "C" cement plug from 0-150'. WOC and tag plug. If necessary, reset the plug. This will place a plug from 150' to the surface.
9. Remove all surface equipment and weld dry hole marker as per regulations.

NOTE: Yates Petroleum Corporation will use steel pits and no earth pits

Spud Date:

Rig Release Date:

**Notify OCD 24 hrs. prio.
To any work done.**

I hereby certify that the information above is true and complete to the best of my knowledge and belief.

SIGNATURE Tina Huerta TITLE Regulatory Compliance Supervisor DATE October 16, 2009

Type or print name Tina Huerta E-mail address: tinah@yatespetroleum.com PHONE: 575-748-4168

For State Use Only

APPROVED BY [Signature] TITLE Approval Granted providing work is complete by 1/22/10 DATE 10/22/09

Conditions of Approval (if any):

WELL NAME: Catclaw AGM #1 FIELD: Dagger Draw

LOCATION: 1,980' FNL & 1,980' FWL of Section 2-20S-24E Eddy Co., NM

GL: 3,658' ZERO: 17' KB: 3,675'

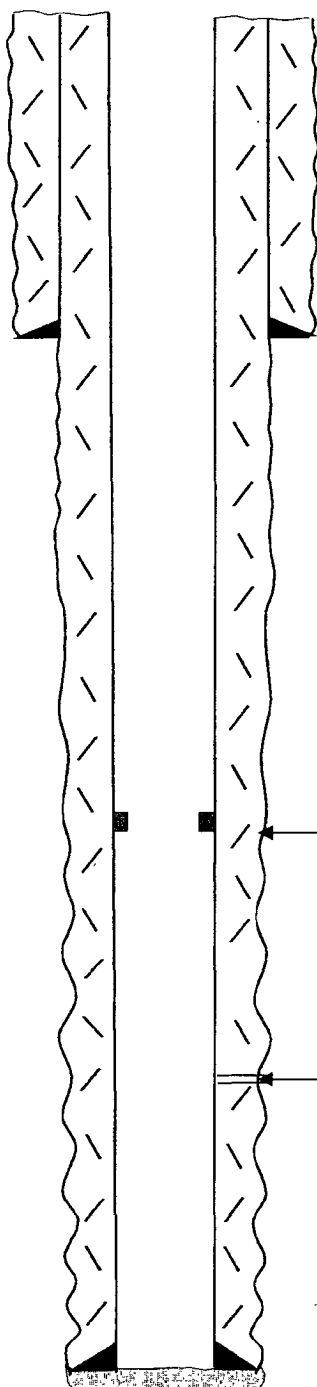
SPUD DATE: 11/3/89 COMPLETION DATE: 2/27/90

COMMENTS: API No.: 30-015-26115

CASING PROGRAM

10-3/4" 40.5% K55 STC		1,210'
7" 26# N80 LTC	164'	
7" 23# N80 LTC	2,321'	
7" 23# J55 LTC	3,292'	
7" 23# N80 LTC	1,014'	
7" 26# J55/N80	1,871'	9,506'

14-3/4" Hole



9-1/2" Hole

10-3/4" @ 1,210' w/700 sx (Circ)

DV Tool @ 5,604'

Canyon Perfs: 7,688-7,800'

TD: 9,506'

7" @ 9,506' w/
1st Stage: 1800 (Circ)
2nd Stage: 1500 sx (Circ)

Before

TOPS

SA	399'
Glorieta	1,896'
Yeso	1,972'
BS	3,285'
WC LS	5,364'
Canyon LS	7,529'
Strawn	8,176'
Atoka	8,711'
Morrow CI	9,076'
L. Morrow	9,137'
Chester	9,123'
Miss	9,457'

Not to Scale

7/30/09
DC/Hill

WELL NAME: Catclaw AGM #1

FIELD: Dagger Draw

LOCATION: 1,980' FNL & 1,980' FWL of Section 2-20S-24E Eddy Co., NM

GL: 3,658' ZERO: 17' KB: 3,675'

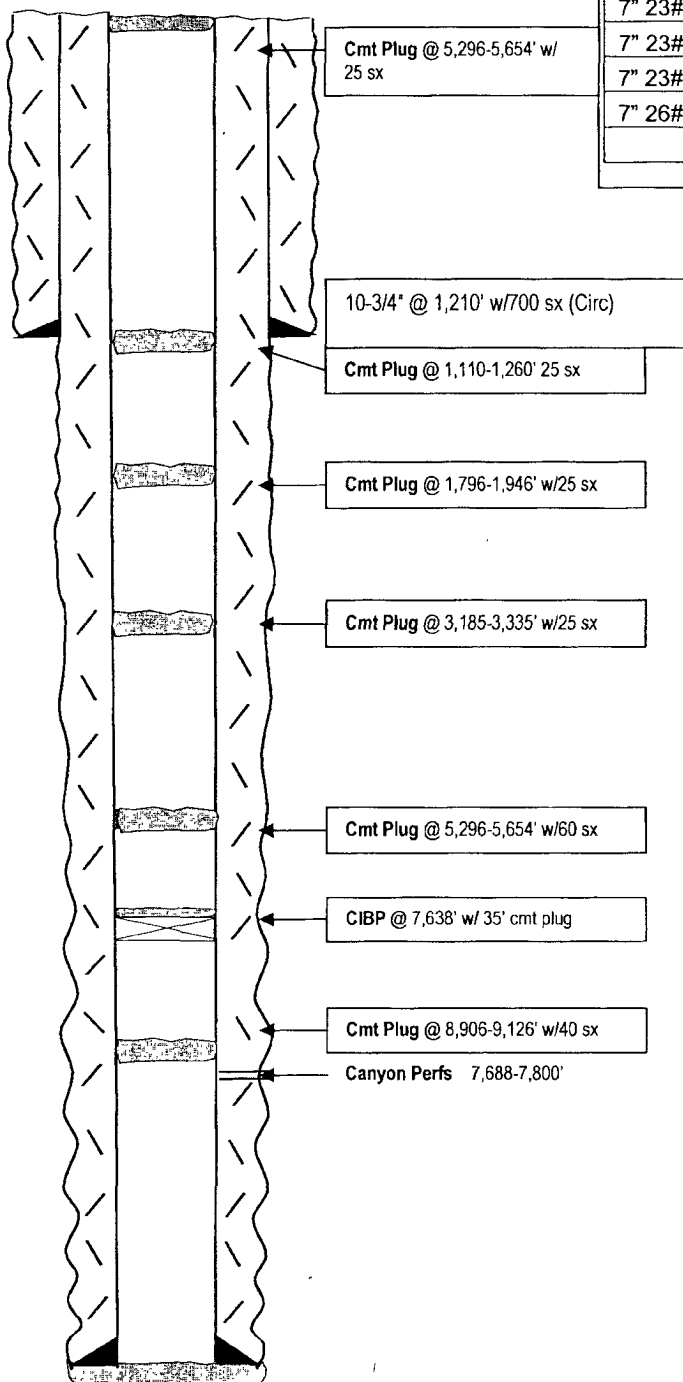
SPUD DATE: 11/3/89 COMPLETION DATE: 2/27/90

COMMENTS: API No.: 30-015-26115

CASING PROGRAM

10-3/4" 40.5% K55 STC	1,210'
7" 26# N80 LTC	164'
7" 23# N80 LTC	2,321'
7" 23# J55 LTC	3,292'
7" 23# N80 LTC	1,014'
7" 26# J55/N80	1,871'
	9,506'

14-3/4" Hole



After

TOPS

SA	399'
Glorieta	1,896'
Yeso	1,972'
BS	3,285'
WC LS	5,364'
Canyon LS	7,529'
Strawn	8,176'
Atoka	8,711'
Morrow CI	9,076'
L. Morrow	9,137'
Chester	9,123'
Miss	9,457'

TD: 9,506'

7" @ 9,506' w/
1st Stage: 1800 (Circ)
2nd Stage: 1500 sx (Circ)

Not to Scale

8/10/09
DC/Hill