

District I  
1625 N. French Dr., Hobbs, NM 88240  
District II  
1301 W. Grand Avenue, Artesia, NM 88210  
District III  
1000 Rio Brazos Rd., Aztec, NM 87410  
District IV  
1220 S. St. Francis Dr., Santa Fe, NM 87505

State of New Mexico  
Energy, Minerals & Natural Resources Department  
OIL CONSERVATION DIVISION  
1220 South St. Francis Dr.  
Santa Fe, NM 87505

Form C-402  
Revised October 12, 2005  
Submit to Appropriate District Office  
State Lease- 4 Copies  
Fee Lease- 3 Copies

☐ AMENDED REPORT

WELL LOCATION AND ACREAGE DEDICATION PLAT

API Number <b>30-015-36937</b>	Pool Code <b>11520</b>	Pool Name <b>Cedar Canyon Bone Springs</b>
Property Code <b>305859</b>	Property Name <b>CYPRESS 33 FEDERAL</b>	Well Number <b>3H</b>
OGRID No. <b>16696</b>	Operator Name <b>OXY USA WTP LP</b>	Elevation <b>3011.2'</b>

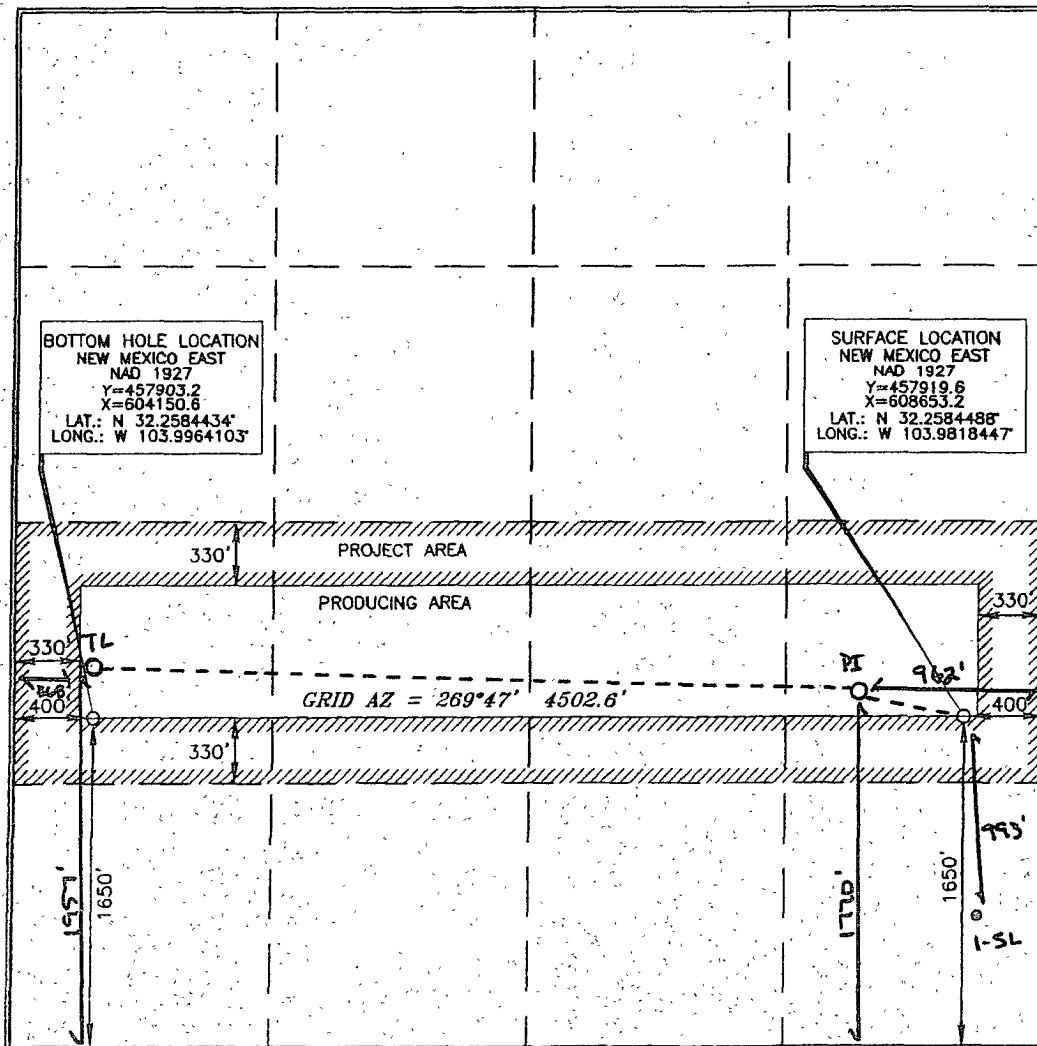
Surface Location

UL or lot no. <b>I</b>	Section <b>33</b>	Township <b>23 SOUTH</b>	Range <b>29 EAST, N.M.P.M.</b>	Lot Idn	Feet from the <b>1650'</b>	North/South line <b>SOUTH</b>	Feet from the <b>400'</b>	East/West line <b>EAST</b>	County <b>EDDY</b>
---------------------------	----------------------	-----------------------------	-----------------------------------	---------	-------------------------------	----------------------------------	------------------------------	-------------------------------	-----------------------

Bottom Hole Location If Different From Surface

UL or lot no. <b>L</b>	Section <b>33</b>	Township <b>23 SOUTH</b>	Range <b>29 EAST, N.M.P.M.</b>	Lot Idn	Feet from the <b>1650'</b> <b>1957</b>	North/South line <b>SOUTH</b>	Feet from the <b>400'</b> <b>368</b>	East/West line <b>WEST</b>	County <b>EDDY</b>
Dedicated Acres <b>160</b>	Joint or Infill <b>N</b>	Consolidation Code	Order No.						

No allowable will be assigned to this completion until all interests have been consolidated or a non-standard unit has been approved by the division.



OPERATOR CERTIFICATION

I hereby certify that the information contained herein is true and complete to the best of my knowledge and belief, and that this organization either owns a working interest or unleased mineral interest in the land including the proposed bottom hole location or has a right to drill this well at this location pursuant to a contract with an owner of such a mineral or working interest, or to a voluntary pooling agreement or a compulsory pooling order heretofore entered by the division.

*David Stewart* 11/20/08  
Signature Date  
David Stewart  
Sub. Reg. Analyst  
Printed Name

SURVEYOR CERTIFICATION

I hereby certify that the well location shown on this plat was plotted from field notes of actual surveys made by me or under my supervision, and that the same is true and correct to the best of my belief.

*Tommy J. Chel* 10/24/2008  
Date of Survey  
15079  
AUGUST 25, 2008  
Signature and Seal of Professional Surveyor  
Certificate Number 15079