

**ENTERED**  
10-29-09

**OCD-ARTESIA**

UNITED STATES  
DEPARTMENT OF THE INTERIOR  
BUREAU OF LAND MANAGEMENT

FORM APPROVED  
OMB NO 1004-0137  
Expires July 31, 2010

**WELL COMPLETION OR RECOMPLETION REPORT AND LOG**

5 LEASE DESIGNATION AND SERIAL NO.

NMNM101108

1a Type of Well  Oil Well  Gas Well  Dry  Other **SWD**  
b Type of Completion  New Well  Workover  Deepen  Plug Back  Diff Resvr.  
Other **RE-ENTRY**

6 INDIAN ALLOTTEE OR TRIBE NAME

7 UNIT AGREEMENT

2 Name of Operator  
**Marbob Energy Corporations**

8 FARM OR LEASE NAME

**West Brushy 5 Federal #5 SWD**

3 Address  
**P.O. Box 227  
Artesia, NM 88211-0227**

3a Phone No (include area code)

575-748-3303

9 API WELL NO

30-015-31869

4 Location of Well (Report location clearly and in accordance with Federal requirements)

At surface **800' FSL & 850' FEL, Unit P (SESE)**

At top prod Interval reported below **Same**

At total depth **Same**

**RECEIVED**  
OCT 20 2009  
NMOCD ARTESIA

10 FIELD NAME

**SWD; Delaware**

11. SEC. T. R. M. OR BLOCK AND SURVEY OR AREA **5 T 26S R 29E**

12 COUNTY OR PARISH 13 STATE  
**Eddy NM**

14 Date Spudded  
**8/26/09 RE**

15 Date TD Reached  
**N/A**

16 Date Completed **9/24/09**  
 D & A  Ready to Prod

17. ELEVATIONS (DF, RKB, RT, GR, etc.)\*  
**2881' GR 2893' KB**

18 Total Depth. MD **6049'**  
TVD **6049'**

19 Plug back T.D. MD **6016'**  
TVD **6016'**

20 Depth Bridge Plug Set MD  
TVD

21 Type Electric & other Logs Run (Submit a copy of each)

22. Was well cored?  No  Yes (Submit analysis)  
Was DST run?  No  Yes (Submit report)  
Directional Survey?  No  Yes (Submit copy).

23 Casing and Liner Record (Report all strings set in well)

Hole Size	Size/Grade	Wt (#/ft.)	Top (MD)	Bottom(MD)	Stage Cementer Depth	No of Sks & Type of Cement	Slurry Vol (Bbl)	Cement Top*	Amount Pulled
11"	8 5/8" J55	24#	0	591'		375 sx (In Place)		0	None
7 7/8"	5 1/2" J55	15.5#	0	6049'		1100 sx (In Place)		620' CBL	None

24 Tubing Record

Size	Depth Set (MD)	Packer Depth (MD)	Size	Depth Set (MD)	Packer Depth (MD)	Size	Depth Set (MD)	Packer Depth (MD)
2 7/8"	4288'	4288'						

25 Producing Intervals

Formation	Top	Bottom	Perforated Interval	Size	No of Holes	Perf Status
A) Delaware	4354'	5912'	4890-4910'	Existing		Squeezed 9/3/09
B)			5193-5223'	Existing		Open
C)			4354-5912'		282	Open
D)						

27 Acid, Fracture Treatment, Cement Squeeze, Etc

Depth Interval	Amount and Type of Material
4890-4910'	Sqz w/200 sx Premium Plus
5662-5912'	Acdz w/3000 gal 15% NEFE
5193-5499'	Acdz w/3000 gal 15% NEFE
4354-4630'	Acdz w/5000 gal 15% NEFE
4354-5912'	Frac w/150380# Brady 20/40 sand & 2741 bbls fluid

**ACCEPTED FOR RECORD**  
OCT 16 2009  
/s/ Chris Walls  
BUREAU OF LAND MANAGEMENT  
CARLSBAD FIELD OFFICE

28 Production- Interval A

Date First Produced	Test Date	Hours Tested	Test Production	Oil Bbl	Gas MCF	Water Bbl	Oil Gravity Corr API	Gas Gravity	Production Method
			→				N/A	N/A	SWD
Choke Size	Tbg Press Flwg SI	Csg Press	24 Hr Rate	Oil Bbl	Gas MCF	Water Bbl	Gas Oil Ratio	Well Status	
N/A	N/A		→						SWD

28a Production- Interval B

Date First Produced	Test Date	Hours Tested	Test Production	Oil Bbl	Gas MCF	Water Bbl	Oil Gravity Corr API	Gas Gravity	Production Method
			→						
Choke Size	Tbg Press Flwg SI	Csg Press	24 Hr Rate	Oil Bbl	Gas MCF	Water Bbl	Gas Oil Ratio	Well Status	
			→						

\* See instructions and spaces for additional data on page 2)

28b Production- Interval C

Date First Produced	Test Date	Hours Tested	Test Production →	Oil Bbl	Gas MCF	Water Bbl	Oil Gravity Corr API	Gas Gravity	Production Method
Choke Size	Tbg Press Flw SI	Csg Press	24 Hr. Rate →	Oil Bbl	Gas MCF	Water Bbl	Gas Oil Ratio	Well Status	

28c Production- Interval D

Date First Produced	Test Date	Hours Tested	Test Production →	Oil Bbl	Gas MCF	Water Bbl	Oil Gravity Corr API	Gas Gravity	Production Method
Choke Size	Tbg Press Flw SI	Csg Press	24 Hr. Rate →	Oil Bbl	Gas MCF	Water Bbl	Gas Oil Ratio	Well Status	

29 Disposition of Gas (Sold, used for fuel, vented, etc)

30 Summary of Porous Zones (include Aquifers)

Show all important zones of porosity and contents thereof Cored intervals and all drill-stem tests, including depth interval tested, cushion used, time tool open, flowing and shut-in pressures and recoveries

31 Formation (Log) Markers


Formation	Top	Bottom	Descriptions Contents, Etc	Name	Top
					Measured Depth
				Rustler Delaware	591' 2813'
					TD 6049'

32. Additional remarks (include plugging procedure)

33 Indicate which items have been attached by placing a check in the appropriate boxes

- Electrical/ Mechanical Logs (1 full set required)     
  Geologic Report     
  DST Report     
  Directional Survey  
 Sundry Notice for plugging and cement verification     
  Core Analysis     
  Other MIT Chart

34 I hereby certify that the foregoing and attached information is complete and correct as determined from all available records (see attached instructions)\*

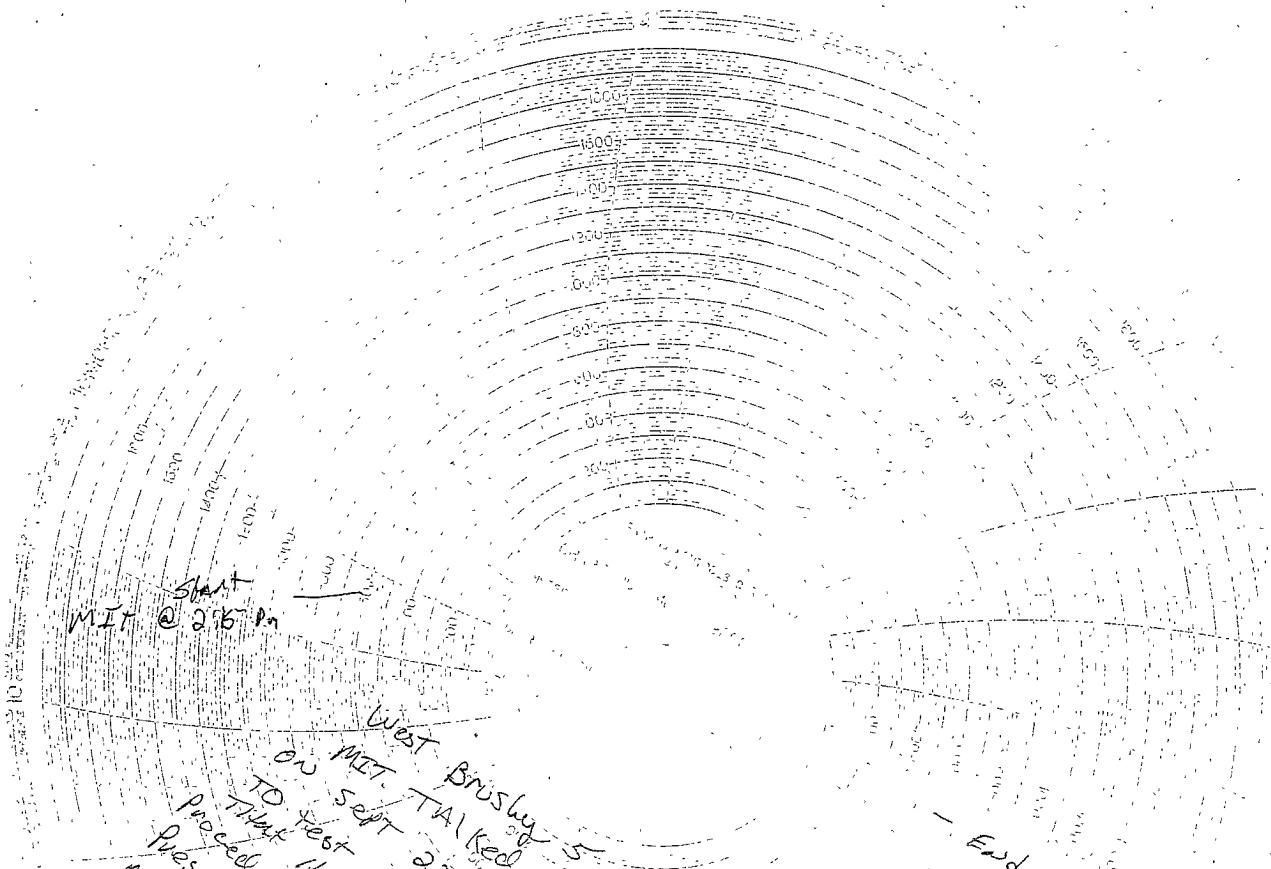
Name (please print) Stormi Davis Title Production Assistant  
 Signature  Date 10/6/09

Title 18 U.S.C. Section 1001 and Title 43 U.S.C. Section 1212, make it a crime for any person knowingly and willfully to make to any department or agency of the United States any false, fictitious or fraudulent statements or representations as to any matter within its jurisdiction

Carlsbad Field Office  
Carlsbad, N.M.

OCT 13 2009

Bureau of Land Management  
RECEIVED



START  
MIT @ 2:15 pm

End @ 2:49 pm

West Brushy 5 FED #5 said NMCCD  
 on MIT TALKED to Richard Judge and was ready  
 to start 2:30 2009 to 2:49 pm  
 That he would not be available for test  
 proceeded with test at 9:24 or @ 2:15 pm  
 pressure manilus to 588 psi held pressure as  
 manilus for 24 min. pressure held from 588  
 580 psi in 3rd min.

Mal D  
 Johnson

Bureau of Land Management  
RECEIVED

OCT 13 2009

Carlsbad Field Office  
Carlsbad, N.M.

