

NEW MEXICO OIL CONSERVATION DIVISION  
SOUTHEAST NEW MEXICO PACKER LEAKAGE TEST

Revised June 9, 2003

30-015-21445

Operator Yates Petroleum Corporation Lease Tidwell "ED" Fee Well No. 1  
Location Of Well: Unit P Section 22 Township 17S Range R26E County Eddy

	Name of Reservoir or Pool	Type of Prod. (Oil or Gas)	Method of Prod. (Flow Art. Lift)	Prod. Medium (Tbg. Or Cag.)	Choke Size
Upper Completion	<u>Atoka (Wildcat)</u>	<u>None</u>	<u>None</u>	<u>CSG</u>	
Lower Completion	<u>Kennedy Farms Atoka</u>	<u>Gas</u>	<u>Compressor</u>	<u>TBG</u>	

**FLOW TEST NO. 1**

Both zones shut-in at (hour, date): 10/12/2009 8:05am

Well opened at (hour, date): 10/13/2009 7:48am

	Upper Completion	Lower Completion
Indicate by (X) the zone producing.....		<u>XXX</u>
Pressure at beginning of test.....	<u>0.0#</u>	<u>200#</u>
Stabilized? (Yes or No).....	<u>Yes</u>	<u>yes</u>
Maximum pressure during test.....	<u>0.0#</u>	<u>200#</u>
Minimum pressure during test.....	<u>0.0#</u>	<u>116#</u>
Pressure at conclusion of test.....	<u>0.0#</u>	<u>118#</u>
Pressure change during test (Maximum minus Minimum).....	<u>0.0#</u>	<u>84#</u>
Was pressure change an increase or a decrease?.....	<u>Stable</u>	<u>Decrease</u>

Well closed at (hour, date): 10/14/2009 8:15am Total Time On Production 24 hours 27 min.

Oil Production \_\_\_\_\_ Gas Production \_\_\_\_\_

During Test: 0 bbls; Grav. \_\_\_\_\_; During Test 32.3 MCF; GOR \_\_\_\_\_

Remarks: Wildcat Atoka will not produce pressure is zero

**FLOW TEST NO. 2**

Both zones shut-in at (hour, date): \_\_\_\_\_

	Upper Completion	Lower Completion
Well opened at (hour, date): _____		
Indicate by (X) the zone producing.....		
Pressure at beginning of test.....		
Stabilized? (Yes or No).....		
Maximum pressure during test.....		
Minimum pressure during test.....		
Pressure at conclusion of test.....		
Pressure change during test (Maximum minus Minimum).....		
Was pressure change an increase or a decrease?.....		

Well closed at (hour, date): \_\_\_\_\_ Total Time On Production \_\_\_\_\_

Oil Production \_\_\_\_\_ Gas Production \_\_\_\_\_

During Test: \_\_\_\_\_ bbls; Grav. \_\_\_\_\_; During Test \_\_\_\_\_ MCF; GOR \_\_\_\_\_

Remarks: \_\_\_\_\_

I hereby certify that the information herein contained is true and complete to the best of my knowledge.

Approved \_\_\_\_\_ 20\_\_\_\_\_  
New Mexico Oil Conservation Division

Operator Wildcat Measurement Service, Inc.

By Don Norman

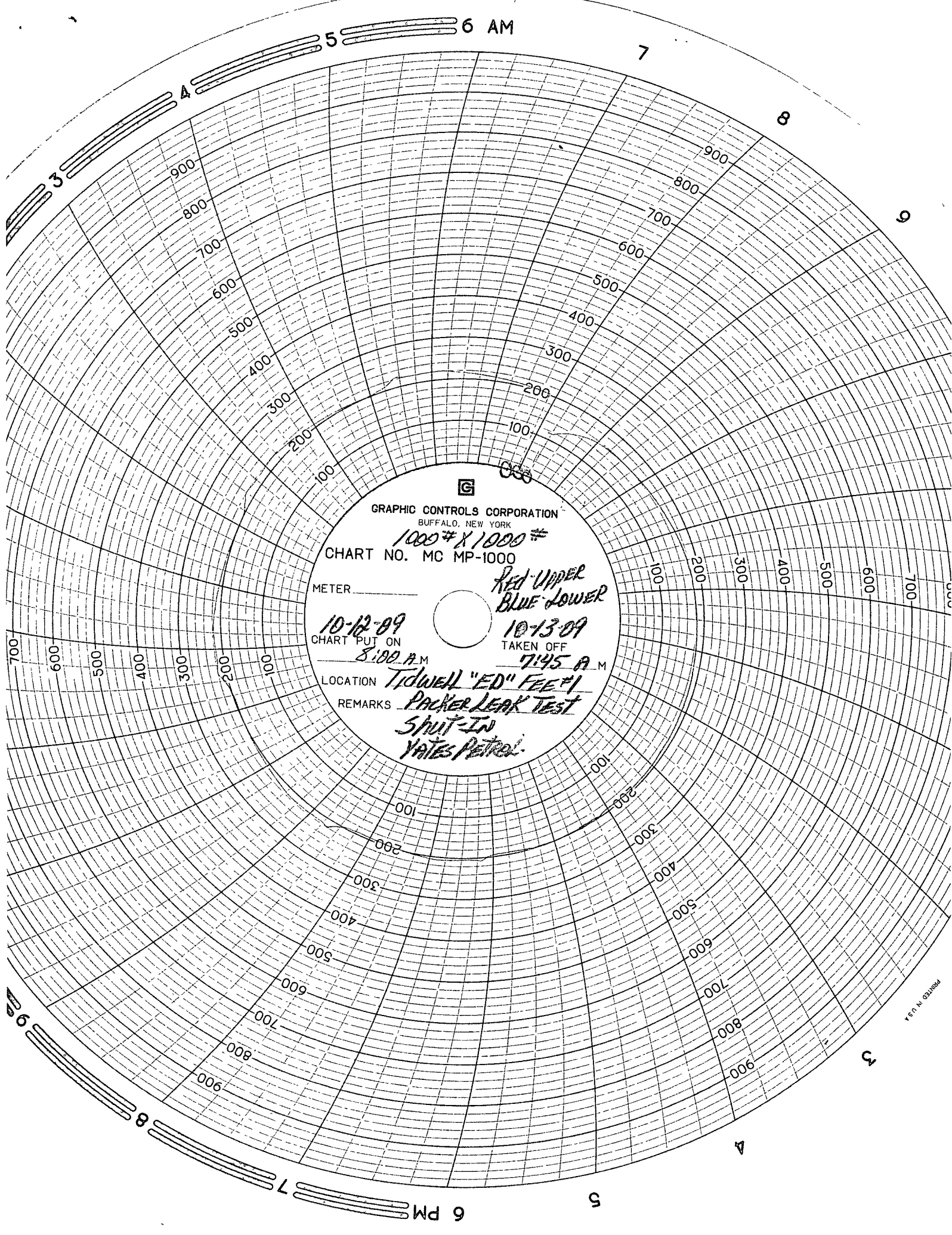
By \_\_\_\_\_

Title Don Norman/Technician

Title \_\_\_\_\_

E-mail Address dnorman@wildcatms.com

Date 10/24/2009



GRAPHIC CONTROLS CORPORATION  
BUFFALO, NEW YORK

1000# X 1000#

CHART NO. MC MP-1000

METER

10-12-09

CHART PUT ON

8:00 A.M.

LOCATION

Tidwell "ED" FEE #1

REMARKS

Packer Leak Test

Shut-In

Yates Petrol.

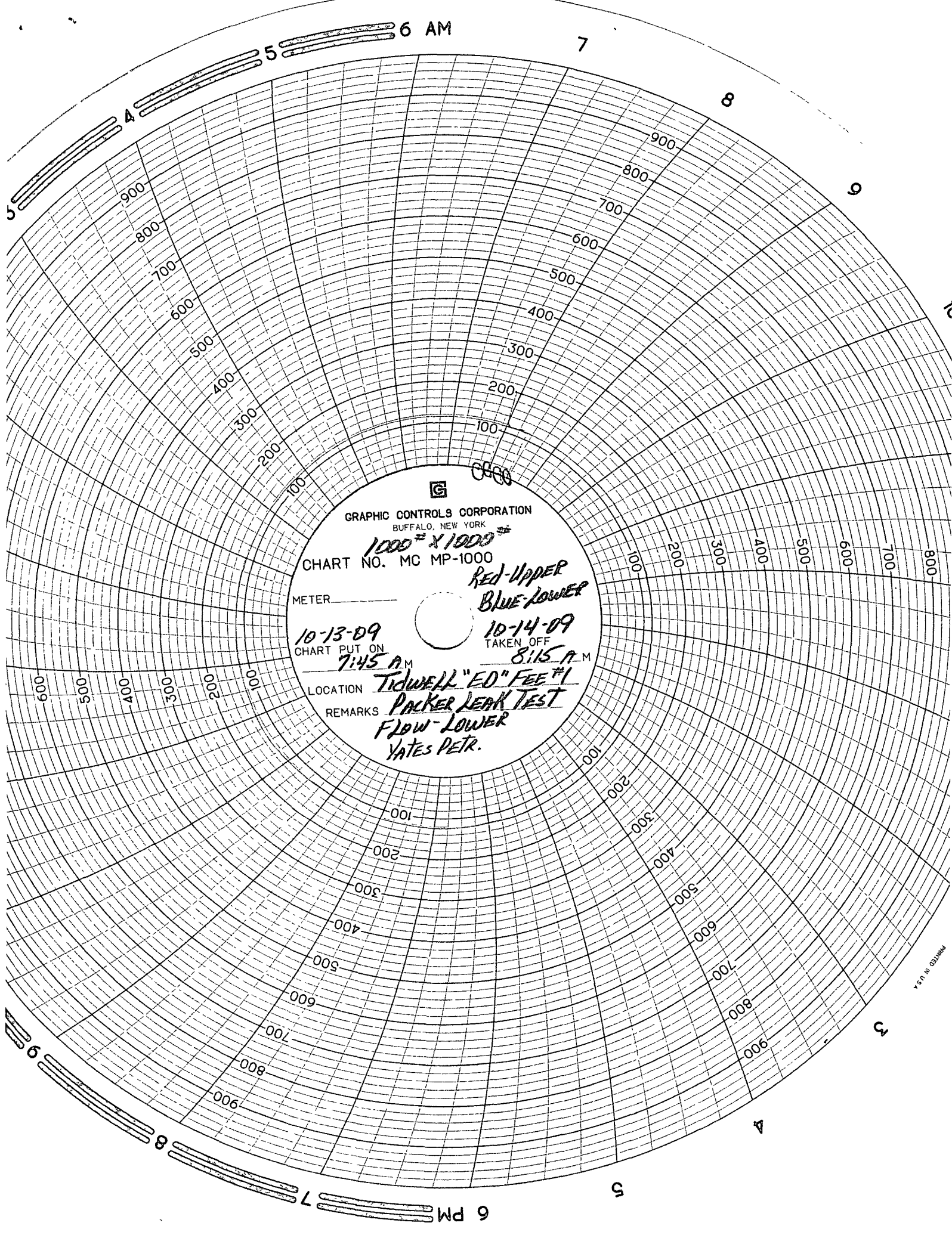
Red Upper  
Blue Lower

10-13-09

TAKEN OFF

7:45 A.M.

PRINTED IN U.S.A.



GRAPHIC CONTROLS CORPORATION  
BUFFALO, NEW YORK

1000" X 1000"  
CHART NO. MC MP-1000

METER \_\_\_\_\_

10-13-09  
CHART PUT ON

7:45 A.M.

LOCATION

TIDWELL "ED" FEE #1

REMARKS

PACKER LEAK TEST  
FLOW-LOWER  
YATES PETR.

10-14-09  
TAKEN OFF

8:15 A.M.