

RECEIVED

NOV -2 2009

NMOCD ARTESIA

NM 88240

Artesia, NM 88210

Rd., Aztec, NM 87410

IV

Francis Dr., Santa Fe, NM 87505

State of New Mexico
Energy, Minerals and Natural Resources Department

OIL CONSERVATION DIVISION

1220 South St. Francis Dr.
Santa Fe, New Mexico 87505Form C-102
Revised October 12, 2005Submit to Appropriate District Office
State Lease - 4 Copies
Fee Lease - 3 Copies☐ AMENDED REPORT

WELL LOCATION AND ACREAGE DEDICATION PLAT

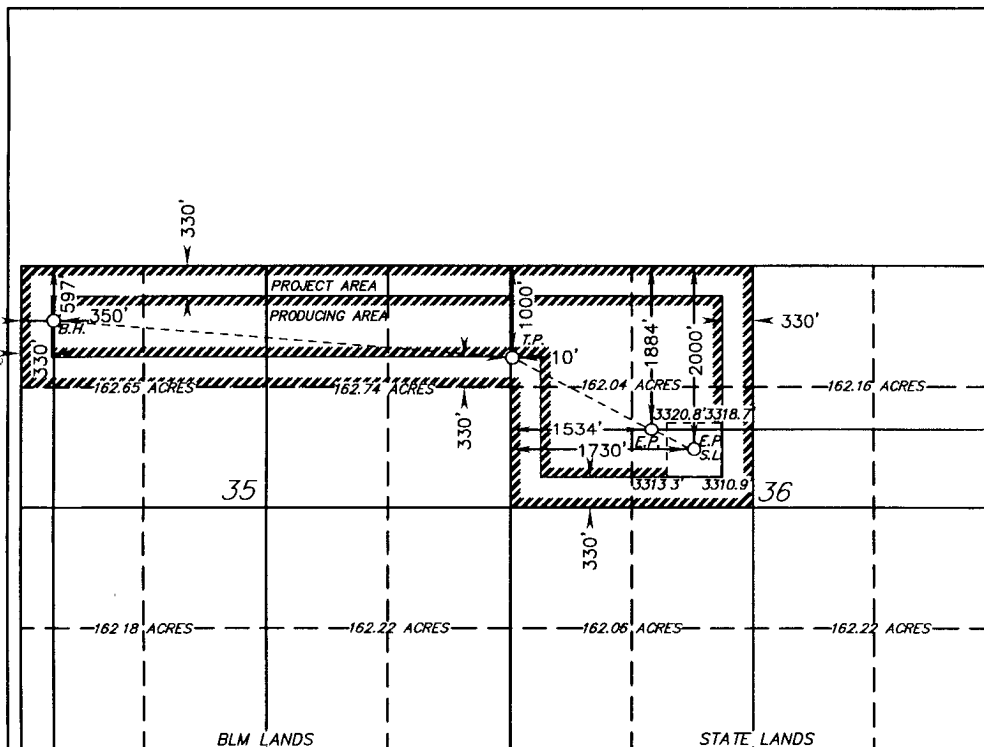
API Number 30-015-37271	Pool Code 50433	Pool Name Quahada Ridge, SE (Delaware)
Property Code 306407	Property Name JAMES RANCH UNIT	Well Number 104H
OGRID No. 260737	Operator Name BOPCO, L.P.	Elevation 3316'

Surface Location

UL or lot No.	Section	Township	Range	Lot Idn	Feet from the	North/South line	Feet from the	East/West line	County
F	36	22 S	30 E		2000	NORTH	1730	WEST	EDDY

Bottom Hole Location If Different From Surface

UL or lot No.	Section	Township	Range	Lot Idn	Feet from the	North/South line	Feet from the	East/West line	County
D	35	22 S	30 E		597	NORTH	350	WEST	EDDY
Dedicated Acres 320	Joint or Infill N	Consolidation Code	Order No.						

NO ALLOWABLE WILL BE ASSIGNED TO THIS COMPLETION UNTIL ALL INTERESTS HAVE BEEN CONSOLIDATED
OR A NON-STANDARD UNIT HAS BEEN APPROVED BY THE DIVISION

PROPOSED BOTTOM HOLE LOCATION

Lat - N 32°21'15.25"
Long - W 103°51'33.08"
NMSPCE - N 492927.086
E 687749.670

(NAD-83)

PROPOSED DELAWARE ENTRY POINT

Lat - N 32°21'01.22"
Long - W 103°50'14.39"
NMSPCE - N 491539.8
E 694505.4

(NAD-83)

SURFACE LOCATION

Lat - N 32°21'01.22"
Long - W 103°50'14.39"
NMSPCE - N 491539.8
E 694505.4

(NAD-83)

PROPOSED TURN POINT
PROVIDED BY BOPCOLat - N 32°21'13.80"
Long - W 103°50'37.86"
NMSPCE - N 492801.45
E 692486.33

(NAD-83)

PROPOSED BRUSHY CANYON ENTRY POINT

Lat - N 32°21'02.35"
Long - W 103°50'16.68"
NMSPCE - N 491652.98
E 694308.49

(NAD-83)

OPERATOR CERTIFICATION

I hereby certify that the information contained herein is true and complete to the best of my knowledge and belief, and that this organization either owns a working interest or unleased mineral interest in the land including the proposed bottom hole location pursuant to a contract with an owner of such a mineral or working interest, or to a voluntary pooling agreement or a compulsory pooling order heretofore entered by the division.

Signature

Date

Gary E. Gerhard

Printed Name

SURVEYOR CERTIFICATION

I hereby certify that the well location shown on this plat was plotted from field notes of actual surveys made by me or under my supervision, and that the same is true and correct to the best of my belief.

Date Surveyed

Signature & Seal of
Professional Surveyor

W.D. 21300

Certificate No. Gary L. Jones 7977

BASIN SURVEYS