

713 296 3396

Marathon Oil

11:46:19 a.m. 05-27-2009

2/4

Form 3160-3
(August 2007)UNITED STATES
DEPARTMENT OF THE INTERIOR
BUREAU OF LAND MANAGEMENTFORM APPROVED
OMB No. 1004-0137
Expires: July 31, 2010**SUNDRY NOTICES AND REPORTS ON WELLS**
Do not use this form for proposals to drill or to re-enter an abandoned well. Use Form 3160-3 (APD) for such proposals.**SUBMIT IN TRIPLICATE - Other Instructions on page 2.**

1. Type of Well

☒ Oil Well ☐ Gas Well ☐ Other

2. Name of Operator

Marathon Oil Company

3a. Address

5555 San Felipe / Mail Stop #3308
Houston, Texas 77056

3b. Phone No. (Include area code)

713-296-3412

4. Location of Well (Footage, Sec., T., R., M., or Survey Description)

UL - "L"

2.215 PBL, 205 FEL, Section 11, Township 21-S, Range 22-E

Latitude: 32.48218
Longitude: 104.58082

5. Lease Serial No.

NM-055518

6. If Indian, Allottee or Tribe Name

7. If Unit of CA Agreement, Name and/or No.

North Indian Basin Unit

8. Well Name and No.

North Indian Basin Unit #27

9. API Well No.

30-015-28977

10. Field and Pool or Exploratory Area

South Dagger Draw / Upper Pen Associated

11. Country or Parish, State

U.S.A. / Eddy County / New Mexico

12. CHECK THE APPROPRIATE BOX(ES) TO INDICATE NATURE OF NOTICE, REPORT OR OTHER DATA

TYPE OF SUBMISSION

- ☐
- Notice of Intent
-
- ☒
- Subsequent Report
-
- ☐
- Final Abandonment Notice

TYPE OF ACTION

- ☐
- Acidize
- ☐
- Deepen
- ☐
- Production (Start/Resume)
- ☐
- Water Shut-Off
-
- ☐
- Alter Casing
- ☐
- Fracture Treat
- ☐
- Reclamation
- ☒
- Well Integrity
-
- ☐
- Casing Repair
- ☐
- New Construction
- ☐
- Recomplete
- ☒
- Other Test Chart Attached!
-
- ☐
- Change Plans
- ☐
- Plug and Abandon
- ☐
- Temporarily Abandon
-
- ☐
- Convert to Injection
- ☐
- Plug Back
- ☐
- Water Disposal

13. Describe Proposed or Completed Operation: Clearly state all pertinent details, including estimated starting date of any proposed work and approximate duration thereof. If the proposal is to deepen directionally or recomplete horizontally, give subsurface locations and measured and true vertical depths of all pertinent markers and zones. Attach the Bond under which the work will be performed or provide the Bond No. on file with BLM/BIA. Required subsequent reports must be filed within 30 days following completion of the involved operations. If the operation results in a multiple completion or recompletion in a new interval, a Form 3160-4 must be filed once testing has been completed. Final Abandonment Notices must be filed only after all requirements, including reclamation, have been completed and the operator has determined that the site is ready for final inspection.)

Marathon Oil Company has completed operations to test the casing on the NIBU #27 well on 05/22/2009. The test showed that the above named well held pressure for the recorded period. Additionally, the test was witnessed by Field and BLM personnel. Please see the attached Pressure Chart for details.

After 3-28-2010 the well must be online or plans to P & A must be submitted.

ACCEPTED FOR RECORD

JUN 2 2009
/s/ JD Whitlock Jr

14. I hereby certify that the foregoing is true and correct. Name (Printed/Typed)

Rick R. Schell

Title Regulatory Compliance Representative

BUREAU OF LAND MANAGEMENT
CARLSBAD FIELD OFFICE

Signature

Date 05/26/2009

THIS SPACE FOR FEDERAL OR STATE OFFICE USE

Approved by

Title DIST II Supervisor

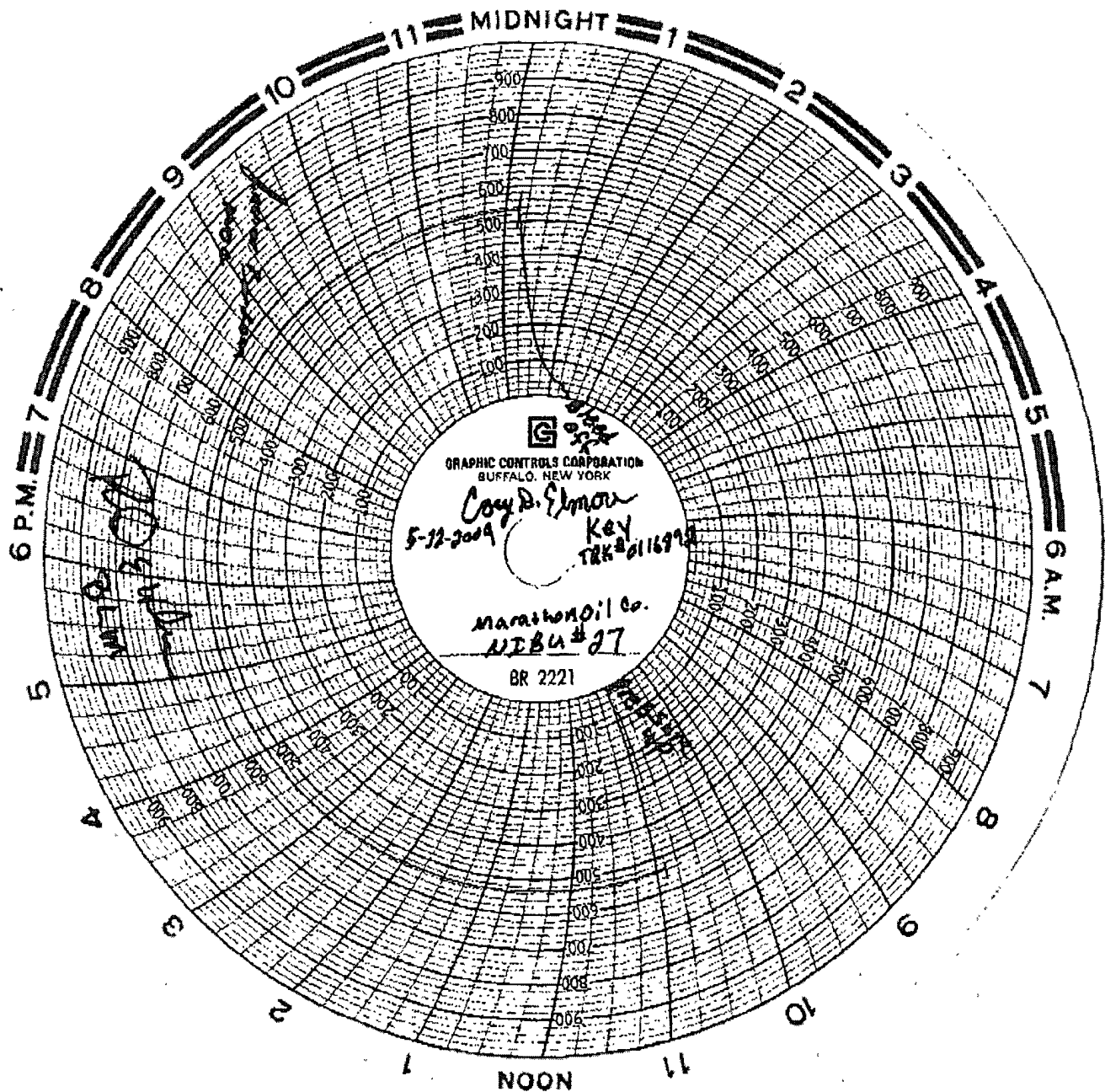
Date 12/03/2009

Conditions of approval, if any, are attached. Approval of this notice does not warrant or certify that the applicant holds legal or equitable title to those rights in the subject lease which would entitle the applicant to conduct operations thereon.

Office

DIST II OCD

Title 18 U.S.C. Section 1001 and Title 43 U.S.C. Section 1212, make it a crime for any person knowingly and willfully to make to any department or agency of the United States any false, fictitious or fraudulent statements or representations as to any matter within its jurisdiction.



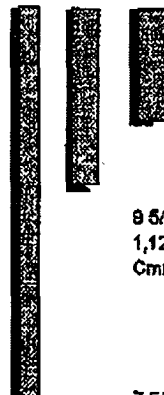
713 296 3396

Marathon Oil

7:46:37 a.m.

05-27-2009

3 / 4



13 3/8" Conductor Casing
Set at 16'. Cemented to
Surface

9 5/8", 36#, K-55 Surface Casing Set at
1,122'. Cemented to Surface w/ 625 Sacks
Cmnt. Circulated 422 Sacks.

7 5/8", 20.4#, N-80 Intermediate Casing
Set at 1,224'. Cemented to Surface w/ 200
Sacks Cmnt. Circulated 40 Sacks.

CIBP set at 7634' with 10' of
cement dump balled on top

5 1/2" TAC stuck at 7643' with 4' of 2 7/8" L-80 tubing on
top and 12 joints below

Canyon Perforations (2 SPF): 7,684'-7,750', 7,770'-7,860'

5 1/2", 17#, K-55 Production Casing Set at 8,308'.
Cemented to Surface w/ 1260 Sacks Cmnt. Circulated
1260 Sacks.

Well Name & Number:		Lease NM 05551			
County or Parish:	Eddy	State/Prov.	New Mexico	Country:	USA
Perforations: (MD)		(TVD)			
Angle/Perfs		Angle @KOP and Depth	0	KOP TVD	0
BHP:	0	BHT:	0	Completion Fluid:	
FWHP:		FBHP:		FWHT:	
				FBHT:	
				Other:	