

# RECEIVED

DEC 16 2009

Form C-102

District I  
1625 N. French Dr., Hobbs, NM 88240  
District II  
1301 W. Grand Avenue, Artesia, NM 88210  
District III  
1000 Rio Brazos Rd., Aztec, NM 87410  
District IV  
1220 S. St. Francis Dr., Santa Fe, NM 87505

State of New Mexico  
Energy, Minerals & Natural Resources Department  
OIL CONSERVATION DIVISION  
1220 South St. Francis Dr.  
Santa Fe, NM 87505

Department  
NMOC D ARTESIA

Revised October 12, 2005  
Submit to Appropriate District Office  
State Lease- 4 Copies  
Fee Lease- 3 Copies

☒ AMENDED REPORT

## WELL LOCATION AND ACREAGE DEDICATION PLAT

|                                   |                                      |   |
|-----------------------------------|--------------------------------------|---|
| API Number<br><b>30-015-37334</b> | Pool Code<br><b>39360</b>            | Pool Name<br><b>Livingston Ridge Delaware</b> |
| Property Code<br><b>304316</b>    | Property Name<br><b>FEDERAL 23</b>   | Well Number<br><b>9</b>                       |
| OGRID No.<br><b>16696</b>         | Operator Name<br><b>OXY USA INC.</b> | Elevation<br><b>3537.1'</b>                   |

## Surface Location

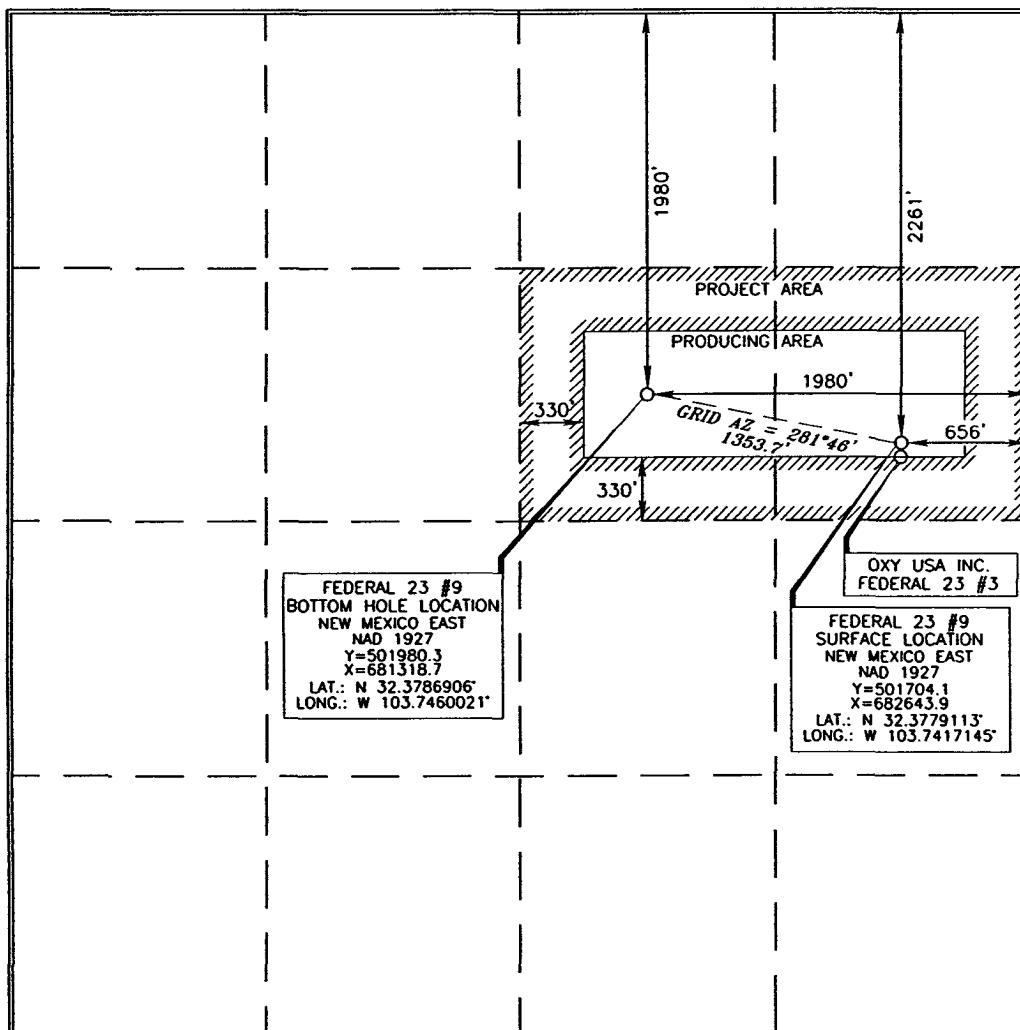
| UL or lot no. | Section   | Township        | Range                    | Lot Idn | Feet from the | North/South line | Feet from the | East/West line | County      |
|---------------|-----------|-----------------|--------------------------|---------|---------------|------------------|---------------|----------------|-------------|
| <b>H</b>      | <b>23</b> | <b>22 SOUTH</b> | <b>31 EAST, N.M.P.M.</b> |         | <b>2261'</b>  | <b>NORTH</b>     | <b>656'</b>   | <b>EAST</b>    | <b>EDDY</b> |

## Bottom Hole Location If Different From Surface

| UL or lot no. | Section   | Township        | Range                    | Lot Idn | Feet from the | North/South line | Feet from the | East/West line | County      |
|---------------|-----------|-----------------|--------------------------|---------|---------------|------------------|---------------|----------------|-------------|
| <b>G</b>      | <b>23</b> | <b>22 SOUTH</b> | <b>31 EAST, N.M.P.M.</b> |         | <b>1980'</b>  | <b>NORTH</b>     | <b>1980'</b>  | <b>EAST</b>    | <b>EDDY</b> |

|                              |                             |                    |           |
|------------------------------|-----------------------------|--------------------|-----------|
| Dedicated Acres<br><b>80</b> | Joint or Infill<br><b>I</b> | Consolidation Code | Order No. |
|------------------------------|-----------------------------|--------------------|-----------|

No allowable will be assigned to this completion until all interests have been consolidated or a non-standard unit has been approved by the division.



## OPERATOR CERTIFICATION

I hereby certify that the information contained herein is true and complete to the best of my knowledge and belief, and that this organization either owns a working interest or unleased mineral interest in the land including the proposed bottom hole location or has a right to drill this well at this location pursuant to a contract with an owner of such a mineral or working interest, or to a voluntary pooling agreement or a compulsory pooling order heretofore entered by the division.

*David Stewart* 12/16/09  
Signature Date

David Stewart  
Printed Name

## SURVEYOR CERTIFICATION

I hereby certify that the well location shown on this plat was plotted from field notes of actual surveys made by me or under my supervision, and that the same is true and correct to the best of my belief.

*Terry J. Paul* 11/24/2009  
Date of Survey

*Terry J. Paul*  
Signature and Seal of Professional Surveyor

15079  
Certificate Number

UNITED STATES  
DEPARTMENT OF THE INTERIOR  
BUREAU OF LAND MANAGEMENTOK  
OCD ArtesiaAT5-08-491  
FORM APPROVED  
OMB NO 1004-0136  
Expires: November 30, 2000


## APPLICATION FOR PERMIT TO DRILL OR REENTER

|   |  |  |  |
|---|--|--|--|
| 1a. Type of Work <input checked="" type="checkbox"/> DRILL <input type="checkbox"/> REENTER   |  | 5. Lease Serial No.<br>NMNM62589                                     |  |
| 1b. Type of Well <input checked="" type="checkbox"/> Oil Well <input type="checkbox"/> Gas Well <input type="checkbox"/> Other <input checked="" type="checkbox"/> Single Zone <input type="checkbox"/> Multiple Zone |  | 6. If Indian, Allottee or Tribe Name                                 |  |
| 2. Name of Operator<br>OXY USA Inc.   |  | 7. Unit or CA Agreement Name and No.                                 |  |
| 3a. Address<br>P.O. Box 50250 Midland, TX 79710-0250  |  | 8. Lease Name and Well No.<br>Federal 23 #9                          |  |
| 3b. Phone No. (include area code)<br>16696<br>432-685-5717  |  | 9. API Well No.<br>30-015-37334                                      |  |
| 4. Location of Well (Report location clearly and in accordance with any State requirements)<br>At surface 2261 FNL 656 FEL SENECH<br>At proposed prod zone 1980 FNL 1980 FEL SWNE(G)                                  |  | 10. Field and Pool, or Exploratory<br>Livingston Ridge Delaware      |  |
| 14. Distance in miles and direction from nearest town or post office*<br>20 miles northeast from Loving, NM   |  | 11. Sec., T., R., M., or Blk. and Survey or Area<br>Sec 23 T22S R31E |  |
| 15. Distance from proposed* location to nearest property or lease line, ft. (Also to nearest drg. unit line, if any)<br>1980'   |  | 12. County or Parish<br>Eddy   |  |
| 16. No. of Acres in lease<br>640  |  | 13. State<br>NM  |  |
| 17. Spacing Unit dedicated to this well<br>40   |  |  |  |
| 18. Distance from proposed location* to nearest well, drilling, completed, applied for, on this lease, ft.<br>1361'   |  | 20. BLM/BIA Bond No. on file<br>ES0136                               |  |
| 21. Elevations (Show whether DF, KDB, RT, GL, etc.)<br>3537.1'  |  | 22. Approximate date work will start*<br>8/09                        |  |
|   |  | 23. Estimated duration<br>45   |  |

## 24. Attachments

The following, completed in accordance with the requirements of Onshore Oil and Gas Order No. 1, shall be attached to this form:

- |   |  |
|---|--|
| 1. Well plat certified by a registered surveyor.  | 4. Bond to cover the operations unless covered by an existing bond on file (see Item 20 above).    |
| 2. A Drilling Plan  | 5. Operator certification  |
| 3. A Surface Use Plan (if the location is on National Forest System Lands, the SUPO shall be filed with the appropriate Forest Service Office). | 6. Such other site specific information and/or plans as may be required by the authorized officer. |

|  |                                       |                    |
|--|---------------------------------------|--------------------|
| 25. Signature<br> | Name (Printed/Typed)<br>David Stewart | Date<br>5/15/09    |
| Title<br>Sr. Regulatory Analyst  |                                       |                    |
| Approved by (Signature)<br>/s/ Linda S.C. Rundell  | Name (Printed/Typed)                  | Date<br>OCT 7 2009 |
| Title<br>STATE DIRECTOR  | Office<br>NM STATE OFFICE             |                    |

Application approval does not warrant or certify that the applicant holds legal or equitable title to those rights in the subject lease which would entitle the applicant to conduct operations thereon  
Conditions of approval, if any, are attached

APPROVAL FOR TWO YEARS

Title 18 U.S.C. Section 1001 and Title 43 U.S.C. Section 1212, make it a crime for any person knowingly and willfully to make to any department or agency of the United States any false, fictitious or fraudulent statements or representations as to any matter within its jurisdiction

\*(Instructions on Reverse)

Carlsbad Controlled Water Basin

Approval Subject to General Requirements  
& Special Stipulations AttachedSEE ATTACHED FOR  
CONDITIONS OF APPROVAL

District I  
1625 N. French Dr., Hobbs, NM 88240  
District II  
1301 W. Grand Avenue, Artesia, NM 88210  
District III  
1000 Rio Brazos Rd., Aztec, NM 87410  
District IV  
1220 S. St. Francis Dr., Santa Fe, NM 87505

State of New Mexico  
Energy, Minerals & Natural Resources Department  
OIL CONSERVATION DIVISION  
1220 South St. Francis Dr.  
Santa Fe, NM 87505

Form C-402  
Revised October 12, 2005  
Submit to Appropriate District Office  
State Lease- 4 Copies  
Fee Lease- 3 Copies

☐ AMENDED REPORT

WELL LOCATION AND ACREAGE DEDICATION PLAT

|                                   |                                      |   |
|-----------------------------------|--------------------------------------|---|
| API Number<br><b>30-015-37334</b> | Pool Code<br><b>39360</b>            | Pool Name<br><b>Livingston Ridge Delaware</b> |
| Property Code<br><b>304816</b>    | Property Name<br><b>FEDERAL 23</b>   | Well Number<br><b>9</b>                       |
| OGRID No.<br><b>16696</b>         | Operator Name<br><b>OXY USA INC.</b> | Elevation<br><b>3537.1'</b>                   |

Surface Location

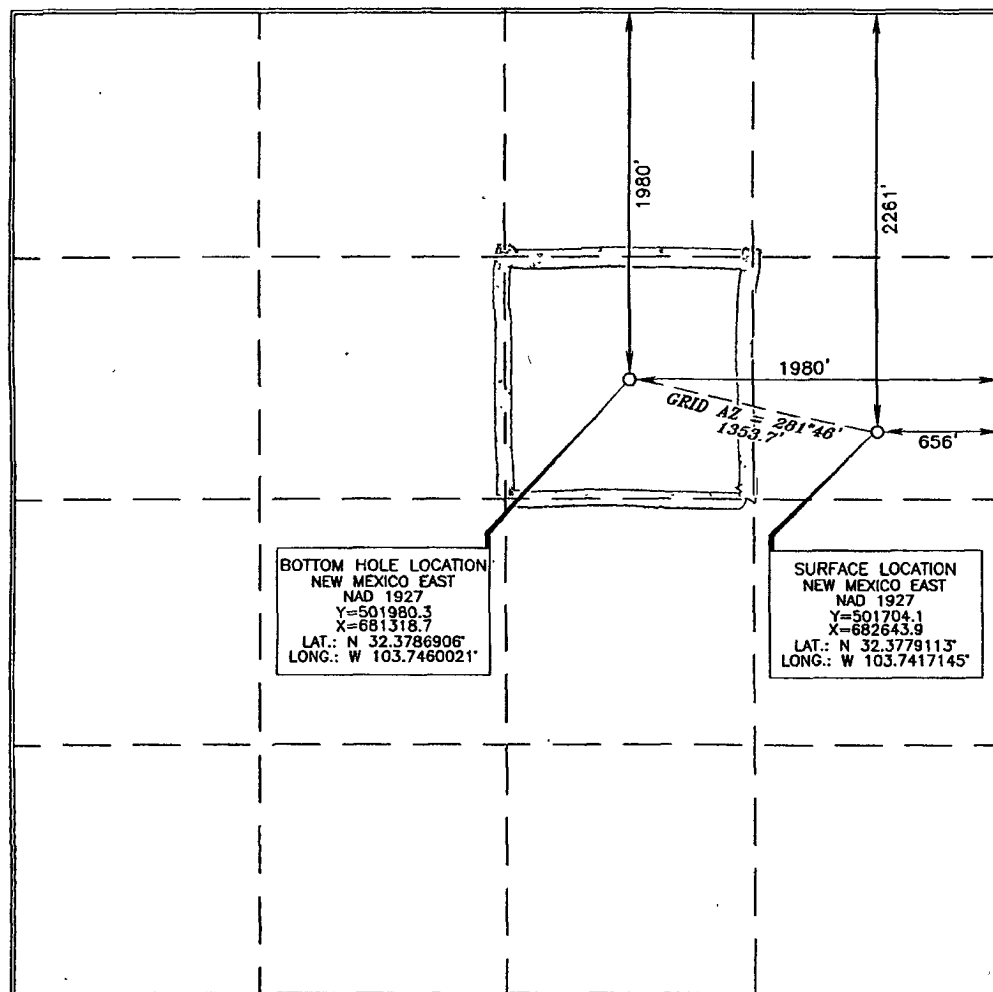
|                           |                      |                             |                                   |         |                               |                                  |                              |                               |                       |
|---------------------------|----------------------|-----------------------------|-----------------------------------|---------|-------------------------------|----------------------------------|------------------------------|-------------------------------|-----------------------|
| UL or lot no.<br><b>H</b> | Section<br><b>23</b> | Township<br><b>22 SOUTH</b> | Range<br><b>31 EAST, N.M.P.M.</b> | Lot Idn | Feet from the<br><b>2261'</b> | North/South line<br><b>NORTH</b> | Feet from the<br><b>656'</b> | East/West line<br><b>EAST</b> | County<br><b>EDDY</b> |
|---------------------------|----------------------|-----------------------------|-----------------------------------|---------|-------------------------------|----------------------------------|------------------------------|-------------------------------|-----------------------|

Bottom Hole Location If Different From Surface

|                           |                      |                             |                                   |         |                               |                                  |                               |                               |                       |
|---------------------------|----------------------|-----------------------------|-----------------------------------|---------|-------------------------------|----------------------------------|-------------------------------|-------------------------------|-----------------------|
| UL or lot no.<br><b>G</b> | Section<br><b>23</b> | Township<br><b>22 SOUTH</b> | Range<br><b>31 EAST, N.M.P.M.</b> | Lot Idn | Feet from the<br><b>1980'</b> | North/South line<br><b>NORTH</b> | Feet from the<br><b>1980'</b> | East/West line<br><b>EAST</b> | County<br><b>EDDY</b> |
|---------------------------|----------------------|-----------------------------|-----------------------------------|---------|-------------------------------|----------------------------------|-------------------------------|-------------------------------|-----------------------|

|                              |                             |                    |           |
|------------------------------|-----------------------------|--------------------|-----------|
| Dedicated Acres<br><b>40</b> | Joint or Infill<br><b>N</b> | Consolidation Code | Order No. |
|------------------------------|-----------------------------|--------------------|-----------|

No allowable will be assigned to this completion until all interests have been consolidated or a non-standard unit has been approved by the division.



OPERATOR CERTIFICATION

I hereby certify that the information contained herein is true and complete to the best of my knowledge and belief, and that this organization either owns a working interest or unleased mineral interest in the land including the proposed bottom hole location or has a right to drill this well at this location pursuant to a contract with an owner of such a mineral or working interest, or to a voluntary pooling agreement or a compulsory pooling order heretofore entered by the division.

*[Signature]* 5/15/09  
Signature Date

*David Stewart*  
Printed Name

SURVEYOR CERTIFICATION

I hereby certify that the well location shown on this plat was adopted from field notes of actual surveys made by me or under my supervision, and that the same is true and correct to the best of my belief.

*[Signature]* 5/14/2009  
Date of Survey

*[Signature]*  
Signature and Seal of Professional Surveyor

*[Signature]* 5/14/2009  
Certificate Number 15079

WO# 080917WL-e (Rev. A) (KA)