

# RECEIVED

DEC 16 2009

Form C-102

District I  
1625 N. French Dr., Hobbs, NM 88240  
District II  
1301 W. Grand Avenue, Artesia, NM 88210  
District III  
1000 Rio Brazos Rd., Aztec, NM 87410  
District IV  
1220 S. St. Francis Dr., Santa Fe, NM 87505

State of New Mexico  
Energy, Minerals & Natural Resources Department  
OIL CONSERVATION DIVISION  
1220 South St. Francis Dr.  
Santa Fe, NM 87505

Revised October 12, 2005  
Submit to Appropriate District Office

State Lease- 4 Copies  
Fee Lease- 3 Copies

☒ AMENDED REPORT

## WELL LOCATION AND ACREAGE DEDICATION PLAT

API Number <b>30-015-37341</b>	Pool Code <b>39360</b>	Pool Name <b>Livingston Ridge Delaware</b>
Property Code <b>304316</b>	Property Name <b>FEDERAL 23</b>	Well Number <b>16</b>
OGRID No. <b>16696</b>	Operator Name <b>OXY USA INC.</b>	Elevation <b>3539.9'</b>

### Surface Location

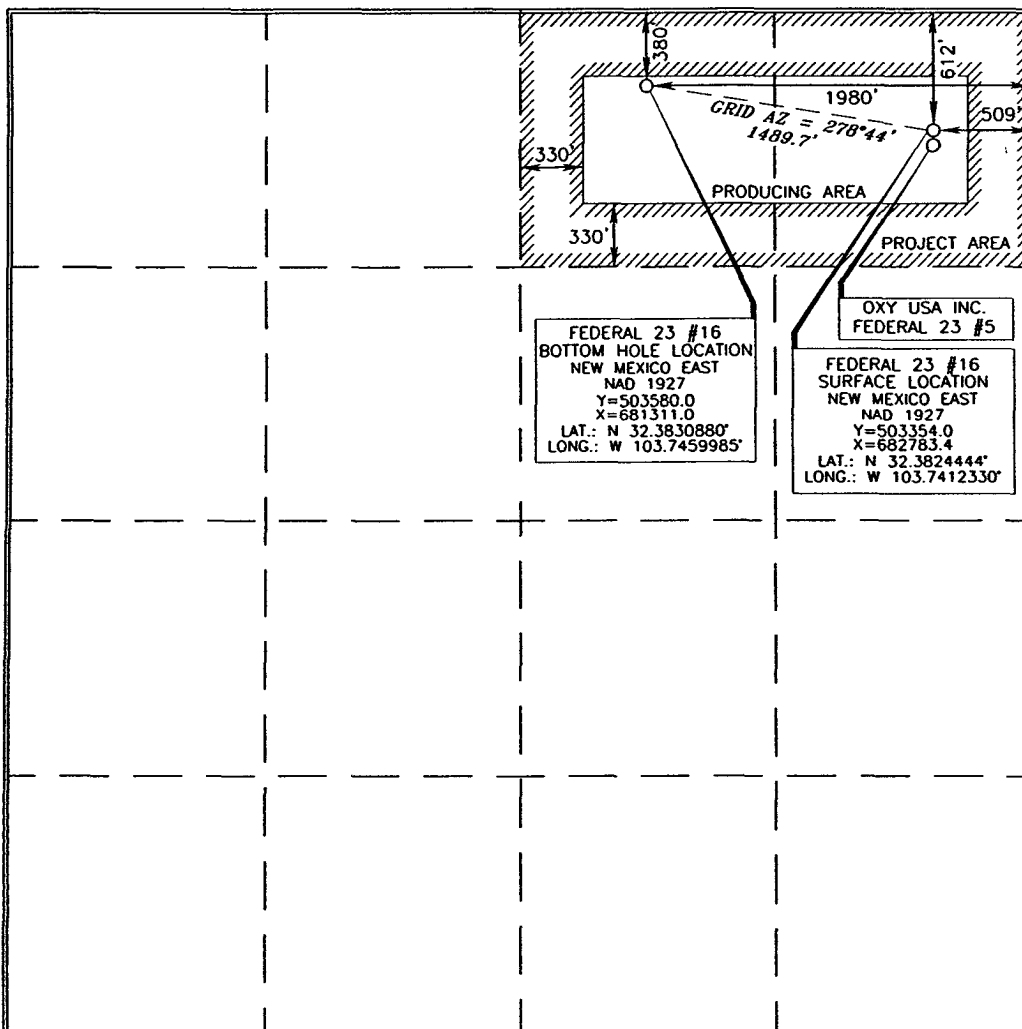
UL or lot no.	Section	Township	Range	Lot Idn	Feet from the	North/South line	Feet from the	East/West line	County
<b>A</b>	<b>23</b>	<b>22 SOUTH</b>	<b>31 EAST, N.M.P.M.</b>		<b>612'</b>	<b>NORTH</b>	<b>509'</b>	<b>EAST</b>	<b>EDDY</b>

### Bottom Hole Location If Different From Surface

UL or lot no.	Section	Township	Range	Lot Idn	Feet from the	North/South line	Feet from the	East/West line	County
<b>B</b>	<b>23</b>	<b>22 SOUTH</b>	<b>31 EAST, N.M.P.M.</b>		<b>380'</b>	<b>NORTH</b>	<b>1980'</b>	<b>EAST</b>	<b>EDDY</b>

Dedicated Acres	Joint or Infill	Consolidation Code	Order No.

No allowable will be assigned to this completion until all interests have been consolidated or a non-standard unit has been approved by the division.



### OPERATOR CERTIFICATION

I hereby certify that the information contained herein is true and complete to the best of my knowledge and belief, and that this organization either owns a working interest or unleased mineral interest in the land including the proposed bottom hole location or has a right to drill this well at this location pursuant to a contract with an owner of such a mineral or working interest, or to a voluntary pooling agreement or a compulsory pooling order heretofore entered by the division.

*David Stewart* 12/16/09  
Signature Date

**David Stewart**  
Printed Name

### SURVEYOR CERTIFICATION

I hereby certify that the well location shown on this plat was plotted from field notes of actual surveys made by me or under my supervision, and that the same is true and correct to the best of my belief.

15079  
APRIL 8, 2009  
Date of Survey

Signature and Seal of Professional Surveyor

*Terry J. Carl* 11/24/2009  
Certificate Number 15079

WO# 080917WL-I (Rev. C) (KA)

UNITED STATES  
DEPARTMENT OF THE INTERIOR  
BUREAU OF LAND MANAGEMENT

RECEIVED

OCT 14 2009

ATS-08-488  
FORM APPROVED  
OMB NO. 1004-0136  
Expires: November 30, 2000

## APPLICATION FOR PERMIT TO DRILL OR REENTER

NMOSD ARTESIA

5 Lease Serial No.  
NMNM62589

6. If Indian, Allottee or Tribe Name

7. Unit or CA Agreement Name and No.

8. Lease Name and Well No.

Federal 23 # 16

9. API Well No.

30-015-37341

10. Field and Pool, or Exploratory

Livingston Ridge Delaware

11. Sec., T., R., M., or Blk and Survey or Area

Sec 23 T22S R31E

12. County or Parish

Eddy

13. State

NM

1a. Type of Work

☒ DRILL☐ REENTER

1b. Type of Well

☒ Oil Well☐ Gas Well☐ Other☒ Single Zone☐ Multiple Zone

2. Name of Operator

OXY USA Inc.

16696

3a. Address

P.O. Box 50250 Midland, TX 79710-0250

3b. Phone No. (include area code)

432-685-5717

4. Location of Well (Report location clearly and in accordance with any State requirements)\*

At surface

612 FNL 509 FEL NENE (A)

At proposed prod. zone

380 FNL 1980 FEL NWNE (B)

14. Distance in miles and direction from nearest town or post office\*

20 miles northeast from Loving, NM

15. Distance from proposed\*

location to nearest  
property or lease line, ft.

(Also to nearest drg. unit line, if any)

380

16. No. of Acres in lease

640

17. Spacing Unit dedicated to this well

40

18. Distance from proposed location\*

to nearest well, drilling, completed,  
applied for, on this lease, ft.

1496'

19. Proposed Depth

8700' M 8400' V

20. BLM/BIA Bond No. on file

ES0136

21. Elevations (Show whether DF, KDB, RT, GL, etc)

3539.9'

22. Approximate date work will start\*

8/09

23. Estimated duration

45

## 24. Attachments

The following, completed in accordance with the requirements of Onshore Oil and Gas Order No. 1, shall be attached to this form:

- 1 Well plat certified by a registered surveyor
- 2 A Drilling Plan
- 3 A Surface Use Plan (if the location is on National Forest System Lands, the SUPO shall be filed with the appropriate Forest Service Office)

- 4 Bond to cover the operations unless covered by an existing bond on file (see Item 20 above)
- 5 Operator certification
- 6 Such other site specific information and/or plans as may be required by the authorized officer.

25. Signature



Name (Printed/Typed)

David Stewart

Date

5/15/09

Title

Sr. Regulatory Analyst

Approved by (Signautre)

/s/ Linda S.C. Rundell

Name (Printed/Typed)

Date

OCT 7 2009

Title

STATE DIRECTOR

Office

NM STATE OFFICE

Application approval does not warrant or certify that the applicant holds legal or equitable title to those rights in the subject lease which would entitle the applicant to conduct operations thereon  
Conditions of approval, if any, are attached.

APPROVAL FOR TWO YEARS

Title 18 U.S.C. Section 1001 and Title 43 U.S.C. Section 1212, make it a crime for any person knowingly and willfully to make to any department or agency of the United States any false, fictitious or fraudulent statements or representations as to any matter within its jurisdiction

\*(Instructions on Reverse)

Carlsbad Controlled Water Basin

SEE ATTACHED FOR  
CONDITIONS OF APPROVALAPPROVAL SUBJECT TO  
GENERAL REQUIREMENTS  
AND SPECIAL STIPULATIONS  
ATTACHED

District I  
1625 N. French Dr., Hobbs, NM 88240  
District II  
1301 W. Grand Avenue, Artesia, NM 88210  
District III  
1000 Rio Brazos Rd., Aztec, NM 87410  
District IV  
1220 S. St. Francis Dr., Santa Fe, NM 87505

State of New Mexico  
Energy, Minerals & Natural Resources Department  
OIL CONSERVATION DIVISION  
1220 South St. Francis Dr.  
Santa Fe, NM 87505

Form C-102  
Revised October 12, 2005  
Submit to Appropriate District Office  
State Lease- 4 Copies  
Fee Lease- 3 Copies

☐ AMENDED REPORT

WELL LOCATION AND ACREAGE DEDICATION PLAT

API Number <b>30-015-37341</b>	Pool Code <b>39360</b>	Pool Name <b>Livingston Ridge Delaware</b>
Property Code <b>304816</b>	Property Name <b>FEDERAL 23</b>	Well Number <b>16</b>
OGRID No. <b>16696</b>	Operator Name <b>OXY USA INC.</b>	Elevation <b>3539.9'</b>

Surface Location

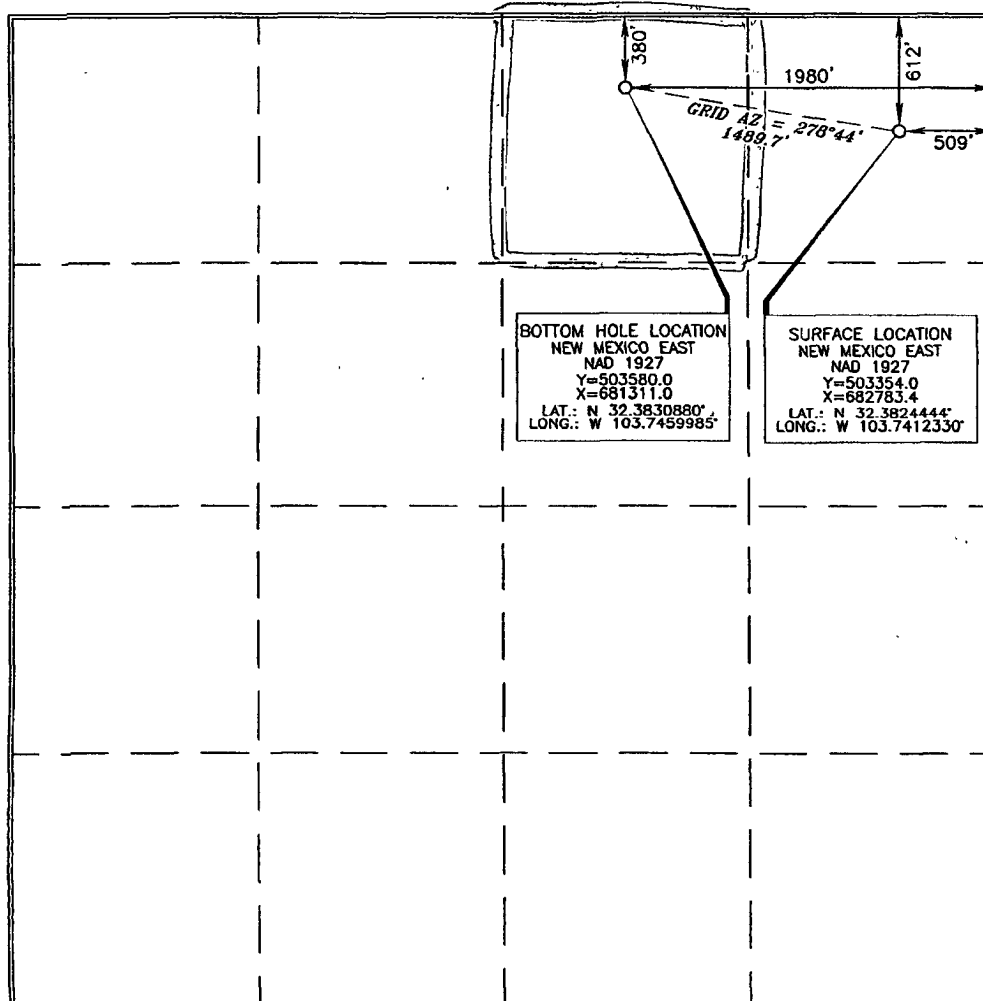
UL or lot no.	Section	Township	Range	Lot Idn	Feet from the	North/South line	Feet from the	East/West line	County
<b>A</b>	<b>23</b>	<b>22 SOUTH</b>	<b>31 EAST, N.M.P.M.</b>		<b>612'</b>	<b>NORTH</b>	<b>509'</b>	<b>EAST</b>	<b>EDDY</b>

Bottom Hole Location If Different From Surface

UL or lot no.	Section	Township	Range	Lot Idn	Feet from the	North/South line	Feet from the	East/West line	County
<b>B</b>	<b>23</b>	<b>22 SOUTH</b>	<b>31 EAST, N.M.P.M.</b>		<b>380'</b>	<b>NORTH</b>	<b>1980'</b>	<b>EAST</b>	<b>EDDY</b>

Dedicated Acres <b>40</b>	Joint or Infill <b>N</b>	Consolidation Code	Order No.
------------------------------	-----------------------------	--------------------	-----------

No allowable will be assigned to this completion until all interests have been consolidated or a non-standard unit has been approved by the division.



OPERATOR CERTIFICATION

I hereby certify that the information contained herein is true and complete to the best of my knowledge and belief, and that this organization either owns a working interest or unleased mineral interest in the land including the proposed bottom hole location or has a right to drill this well at this location pursuant to a contract with an owner of such a mineral or working interest, or to a voluntary pooling agreement or a compulsory pooling order heretofore entered by the division.

*[Signature]* 5/15/09  
Signature Date

*Dwight Stewart*  
Printed Name

SURVEYOR CERTIFICATION

I hereby certify that the well location shown on this plat was plotted from field notes of actual surveys made by me or under my supervision and that the same is true and correct to the best of my belief.

*[Signature]* 5/14/09  
Date of Survey

*[Signature]*  
Signature and Seal of Professional Surveyor

*[Signature]* 5/14/09  
Certificate Number 15079

WO# 080917WL-1 (Rev. B) (KA)