

District I

1625 N. French Dr., Hobbs, NM 88240

District II

1301 W. Grand Ave., Artesia, NM 88210

District III

1000 Rio Brazos Rd., Aztec, NM 87410

District IV

1220 S. St Francis Dr., Santa Fe, NM 87505

State of New Mexico
Energy, Minerals and Natural Resources

Form C-102
Permit 104599**Oil Conservation Division****1220 S. St Francis Dr.****Santa Fe, NM 87505****RECEIVED****APR 28 2010****NMOC ARTESIA****WELL LOCATION AND ACREAGE DEDICATION PLAT**

1. API Number 30-015-37437	2. Pool Code 97558	3. Pool Name GJ;7RVS-QN-GB-GLORIETA-YESO
4. Property Code 302497	5. Property Name G J WEST COOP UNIT	6. Well No. 256
7. OGRID No. 229137	8. Operator Name COG OPERATING LLC	9. Elevation 3563

10. Surface Location

UL - Lot H	Section 21	Township 17S	Range 29E	Lot Idn	Feet From 2390	N/S Line N	Feet From 330	E/W Line E	County EDDY
---------------	---------------	-----------------	--------------	---------	-------------------	---------------	------------------	---------------	----------------

11. Bottom Hole Location If Different From Surface

UL - Lot	Section	Township	Range	Lot Idn	Feet From	N/S Line	Feet From	E/W Line	County
12. Dedicated Acres 40.00		13. Joint or Infill		14. Consolidation Code		15. Order No.			

NO ALLOWABLE WILL BE ASSIGNED TO THIS COMPLETION UNTIL ALL INTERESTS HAVE BEEN CONSOLIDATED OR A NON-STANDARD UNIT HAS BEEN APPROVED BY THE DIVISION

	OPERATOR CERTIFICATION	
	<i>I hereby certify that the information contained herein is true and complete to the best of my knowledge and belief, and that this organization either owns a working interest or unleased mineral interest in the land including the proposed bottom hole location(s) or has a right to drill this well at this location pursuant to a contract with an owner of such a mineral or working interest, or to a voluntary pooling agreement or a compulsory pooling order heretofore entered by the division.</i>	
	E-Signed By: Diane Kuykendall Title: Regulatory Analyst Date: 12/9/2009	
	SURVEYOR CERTIFICATION	
<i>I hereby certify that the well location shown on this plat was plotted from field notes of actual surveys made by me or under my supervision, and that the same is true and correct to the best of my belief.</i>		
Surveyed By: Ronald Eidson Date of Survey: 12/2/2009 Certificate Number: 3239		

DISTRICT I
1625 N. French Dr., Hobbs, NM 88240

DISTRICT II
1301 W. Grand Avenue, Artesia, NM 88210

DISTRICT III
1000 Rio Brazos Rd., Aztec, NM 87410

DISTRICT IV
1220 St. Francis Dr., Santa Fe, NM 87505

State of New Mexico
Energy, Minerals and Natural Resources Department

OIL CONSERVATION DIVISION
1220 South St. Francis Dr.
Santa Fe, New Mexico 87505

RECEIVED
APR 26 2010
NM OGD ARTESIA

Form C-102
Revised October 12, 2005
Submit to Appropriate District Office
State Lease - 4 Copies
Fee Lease - 3 Copies

☐ AMENDED REPORT

WELL LOCATION AND ACREAGE DEDICATION PLAT

API Number 30-015-36924	Pool Code 47545	Pool Name Nash Draw (Delaware/Bone Spring/AvSd)
Property Code 306402	Property Name POKER LAKE UNIT	Well Number 301H
OGRID No. 260737	Operator Name BOPCO, L.P.	Elevation 3345'

Surface Location

UL or lot No	Section	Township	Range	Lot Idn	Feet from the	North/South line	Feet from the	East/West line	County
F	27	24 S	30 E		2460	NORTH	2310	WEST	EDDY

Bottom Hole Location If Different From Surface

UL or lot No	Section	Township	Range	Lot Idn	Feet from the	North/South line	Feet from the	East/West line	County
I	21	24 S	30 E		1537	SOUTH	400	EAST	EDDY

Dedicated Acres	Joint or Infill	Consolidation Code	Order No
280			

NO ALLOWABLE WILL BE ASSIGNED TO THIS COMPLETION UNTIL ALL INTERESTS HAVE BEEN CONSOLIDATED
OR A NON-STANDARD UNIT HAS BEEN APPROVED BY THE DIVISION

<p>PROPOSED BOTTOM HOLE LOCATION LAT - N32°12'00.36" LONG - W103°52'42.20" N.: 436813.853 SPC- E.: 640723.641 (NAD-27)</p> <p>SURFACE LOCATION LAT - N32°11'21.04" LONG - W103°52'10.67" N.: 432852.050 SPC- E.: 643449.893 (NAD-27)</p> <p>PROPOSED DELAWARE ENTRY POINT LAT - N32°11'21.04" LONG - W103°52'10.67" N.: 432852.050 SPC- E.: 643449.893 (NAD-27)</p>	<p>OPERATOR CERTIFICATION</p> <p>I hereby certify that the information contained herein is true and complete to the best of my knowledge and belief, and that this organization either owns a working interest or undivided mineral interest in the land including the proposed bottom hole location pursuant to a contract with an owner of such a mineral or working interest, or to a voluntary pooling agreement or a compulsory pooling order heretofore entered by the division.</p> <p><i>Jordan Evans</i> 10-2-09 Signature Date</p> <p>JORDAN EVANS Printed Name</p> <p>SURVEYOR CERTIFICATION</p> <p>I hereby certify that the well location shown on this plat was plotted from field notes of actual surveys made by me or under my supervision and that the same is true and correct to the best of my belief.</p> <p>OCTOBER 2008 Date Surveyed</p> <p>GARY L. JONES Signature</p> <p>Professional Surveyor 7977</p> <p>W. 260737-8594</p> <p>Certificate No. Gary L. Jones 7977</p> <p>BASIN SURVEYS</p>
--	---

RECEIVED

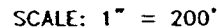
OCT 20 2009

BOPCO WTD PRODUCTION

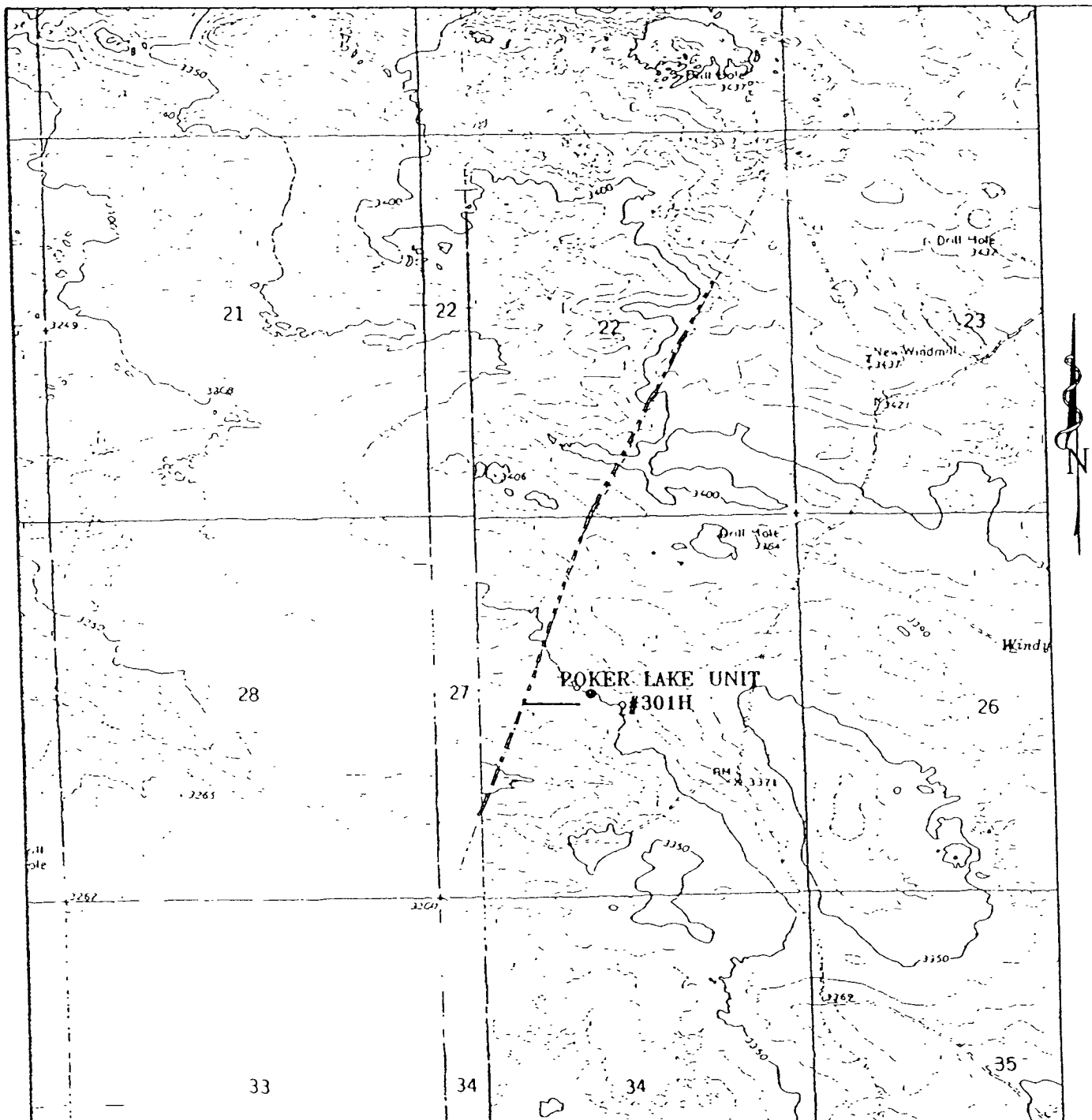
NEW MEXICO.



FROM THE JUNCTION OF TWIN WELLS AND McDONALD,
GO WEST ON McDONALD FOR 0.8 MILES TO 2-TRACK,
ON 2-TRACK GO NORTH 0.4 MILES TO PROPOSED
LEASE ROAD.



Sheet 1 of 1 Sheets



POKER LAKE UNIT #301H

2460' FNL and 2310' FWL

Section 27, Township 24 South, Range 30 East,
N.M.P.M., Eddy County, New Mexico.



P.O. Box 1786
1120 N. West County Rd.
Hobbs, New Mexico 88241
(575) 393-7316 - Office
(575) 392-2206 - Fax
basinsurveys.com

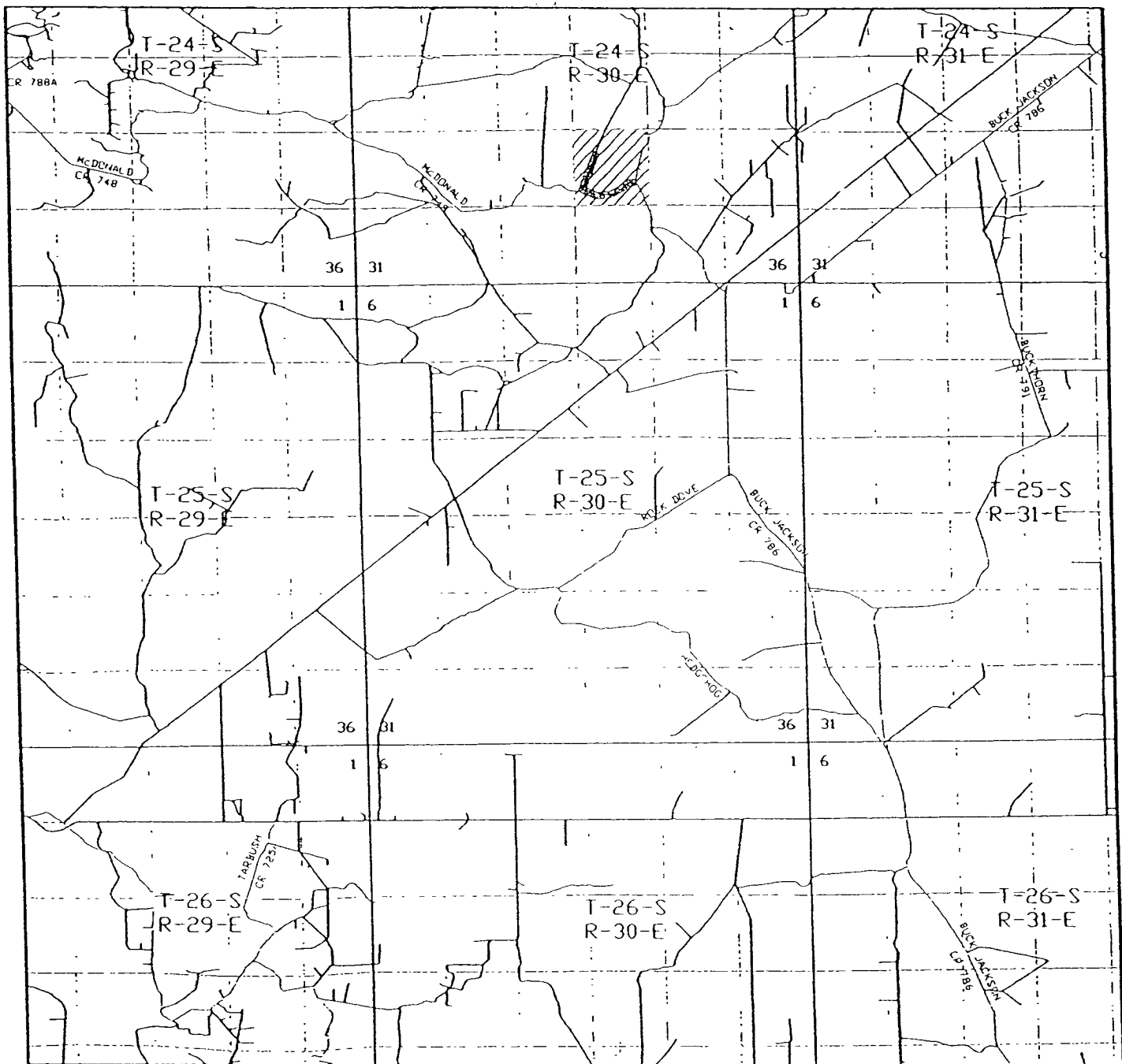
WC Number JMS 20594

Survey Date 10-01-2008

Scale 1" = 2000'

Date 10-02-2008

BOPCO, L.P.



POKER LAKE UNIT #301H
 2460' FNL and 2310' FWL
 Section 27, Township 24 South, Range 30 East,
 N.M.P.M., Eddy County, New Mexico.

basin
surveys
 focused on excellence
 in the oilfield

P.O. Box 1786
 1120 N. West County Rd.
 Hobbs, New Mexico 88241
 (575) 393-7316 - Office
 (575) 392-2206 - Fax
 basin-surveys.com

W.O. Number: JMS 20594

Survey Date: 10-01-2008

Scale: 1" = 2 MILES

Date: 10-02-2008

BOPCO, L.P.

COMPANY: BOPCO, L.P.

WELL: Poker Lake Unit #301H

FIELD: Nash Draw (Delaware)

County: Eddy State: New Mexico

County: Eddy Field: Nash Draw (Delaware) Location: 2460' FNL & 2310' FWL Well: Poker Lake Unit #301H Company: BOPCO, L.P.	LOCATION		Schlumberger		Platform Express					
					Three Detector Litho-Density					
					Compensated Neutron/GR					
			2460' FNL & 2310' FWL		Elev K B. 3365.9 ft G L. 3347.2 ft D F. 3364.4 ft					
			Permanent Datum: GROUND LEVEL		Elev.: 3347.2 ft					
			Log Measured From:		18.7 ft above Perm Datum					
			Drilling Measured From:							
			API Serial No 30-015-36924		Section 27		Township 24S		Range 30E	
Logging Date			12-Aug-2009							
Run Number			1							
Depth Driller			7556 ft							
Schlumberger Depth			7456 ft							
Bottom Log Interval			7448 ft							
Top Log Interval			200 ft							
Casing Driller Size @ Depth			8.625 in @ 2339 ft		@					
Casing Schlumberger			2343 ft							
Bit Size			7.875 in							
Type Fluid In Hole			Deisel Emulsion							
MUD	Density	Viscosity	8.8 lbm/gal 40 s							
	Fluid Loss	PH	9.5							
	Source Of Sample		Mud Pit							
RM @ Measured Temperature			@		@					
RMF @ Measured Temperature			@		@					
RMC @ Measured Temperature			@		@					
Source RMF		RMC	Calculated	Calculated						
RM @ MRT		RMF @ MRT	@ 120	@ 120	@ @					
Maximum Recorded Temperatures			120 degF							
Circulation Stopped		Time	12-Aug-2009 0:10							
Logger On Bottom		Time	12-Aug-2009 9:45							
Unit Number		Location	2154 Roswell, NM							
Recorded By			Daniel Martinez							
Witnessed By			Larry Ludwick							

COMPANY: BOPCO, L.P.

WELL: Poker Lake Unit #301H

FIELD: Nash Draw (Delaware)

County: Eddy State: New Mexico

Eddy County: Field: Nash Draw (Delaware) Location: 2460' FNL & 2310' FWL Well: Poker Lake Unit #301H Company: BOPCO, L.P.		Triple Combo Log			
		Schlumberger			
		LOCATION			
		2460' FNL & 2310' FWL		Elev.: K.B 3365.9 ft G.L. 3347.2 ft D.F. 3364.4 ft	
		Permanent Datum: GROUND LEVEL		Elev.: 3347.2 ft	
		Log Measured From:		18.7 ft above Perm. Datum	
		Drilling Measured From:			
		API Serial No. 30-015-36924		Section 27	Township 24S Range 30E
Logging Date		12-Aug-2009			
Run Number		1			
Depth Driller		7556 ft			
Schlumberger Depth		7456 ft			
Bottom Log Interval		7448 ft			
Top Log Interval		2343 ft			
Casing Driller Size @ Depth		8.625 in @ 2339 ft @			
Casing Schlumberger		2343 ft			
Bit Size		7.875 in			
Type Fluid In Hole		Deisel Emulsion			
MUD	Density	Viscosity	8.8 lbm/gal	40 s	
	Fluid Loss	PH		9.5	
	Source Of Sample		Mud Pit		
RM @ Measured Temperature		@		@	
RMF @ Measured Temperature		@		@	
RMC @ Measured Temperature		@		@	
Source RMF		RMC	Calculated	Calculated	
RM @ MRT		RMF @ MRT	@ 120	@ 120	@ @
Maximum Recorded Temperatures		120 degF			
Circulation Stopped		Time	12-Aug-2009	0:10	
Logger On Bottom		Time	12-Aug-2009	9:45	
Unit Number		Location	2154	Roswell, NM	
Recorded By		Daniel Martinez			
Witnessed By		Larry Ludwick			