

Form 3160-3
(April 2004)**RECEIVED**

JUN 18 2010

NMCD ARTESIA

UNITED STATES
DEPARTMENT OF THE INTERIOR
BUREAU OF LAND MANAGEMENT
APPLICATION FOR PERMIT TO DRILL OR REENTER

SECRETARY'S POTASH

FORM APPROVED
OMB No 1004-0137
Expires March 31, 2007

EA10-691

Lease Serial No.
NMNM77046

6 If Indian, Allottee or Tribe Name

7 If Unit or CA Agreement, Name and No

8. Lease Name and Well No **<30673>**
North Pure Gold 8 Federal 14H9 API Well No.
30-015-3796610 Field and Pool, or Exploratory
Los Medanos; Bone Spring **(40295)**
Sec, T, R, M or Blk and Survey or Area

Unit O SEC 8 T23S R31E

1a. Type of work ☒ DRILL ☐ REENTER1b. Type of Well ☒ Oil Well ☐ Gas Well ☐ Other ☒ Single Zone ☐ Multiple Zone2 Name of Operator
Devon Energy Production Company, LP3a Address **20 North Broadway**
Oklahoma City, Oklahoma City 73102-82603b Phone No. (include area code)
405-228-8699

4. Location of Well (Report location clearly and in accordance with any State requirements*)

At surface **SW/4 SE/ 150' FSL & 1700' FEL**At proposed prod zone **NW/4 NE/4 330' FNL & 1650' FEL**14 Distance in miles and direction from nearest town or post office*
Approximately 17 miles east of Loving, NM.

12. County or Parish

Eddy County

13 State

NM15. Distance from proposed*
location to nearest
property or lease line, ft
(Also to nearest drig. unit line, if any)**660'**

16 No. of acres in lease

1320 Acres

17. Spacing Unit dedicated to this well

160 Acres18 Distance from proposed location*
to nearest well, drilling, completed,
applied for, on this lease, ft**See attached map.**19. Proposed Depth **8550' MD**
8977' MD 13,218' FEL

20 BLM/BIA Bond No. on file

CO-110421 Elevations (Show whether DF, KDB, RT, GL, etc.)
3325' GL

22 Approximate date work will start*

23 Estimated duration

45 days

24. Attachments

The following, completed in accordance with the requirements of Onshore Oil and Gas Order No 1, shall be attached to this form.

- Well plat certified by a registered surveyor
- A Drilling Plan.
- A Surface Use Plan (if the location is on National Forest System Lands, the SUPO shall be filed with the appropriate Forest Service Office)

- Bond to cover the operations unless covered by an existing bond on file (see item 20 above).
- Operator certification
- Such other site specific information and/or plans as may be required by the authorized officer

25. Signature

Title

Regulatory Analyst

Name (Printed/Typed)

Judy A. Barnett

Date

04/16/2010

Approved by (Signature)

Title

ACTING STATE DIRECTOR

Name (Printed/Typed)

Office

NM STATE OFFICE

Date

6-11-10

Application approval does not warrant or certify that the applicant holds legal or equitable title to those rights in the subject lease which would entitle the applicant to conduct operations thereon.

Conditions of approval, if any, are attached

APPROVAL FOR TWO YEARS

Title 18 U.S.C. Section 1001 and Title 43 U.S.C. Section 1212, make it a crime for any person knowingly and willfully to make to any department or agency of the United States any false, fictitious or fraudulent statements or representations as to any matter within its jurisdiction.

*(Instructions on page 2) **well becomes orthodox @ approx. 8550' MD**

KZ

Carlsbad Controlled Water Basin

SEE ATTACHED FOR
CONDITIONS OF APPROVALAPPROVAL SUBJECT TO
GENERAL REQUIREMENTS
AND SPECIAL STIPULATIONS
ATTACHED

DISTRICT I
1625 French Dr., Hobbs, NM 88240

DISTRICT II
1301 W. Grand Avenue, Artesia, NM 88210

DISTRICT III
1000 Rio Brazos Rd., Aztec, NM 87410

DISTRICT IV
1220 S. St. Francis Dr., Santa Fe, NM 87505

State of New Mexico
Energy, Minerals and Natural Resources Department

Form C-102
Revised October 15, 2009

Submit one copy to appropriate
District Office

OIL CONSERVATION DIVISION
1220 South St. Francis Dr.
Santa Fe, New Mexico 87505

WELL LOCATION AND ACREAGE DEDICATION PLAT

☐ AMENDED REPORT

API Number 30-016-77966	Pool Code 40295	Pool Name LOS MEDANOS; BONE SPRINGS
Property Code 30673	Property Name NORTH PURE GOLD "8" FEDERAL	Well Number 14H
OGRID No. 6137	Operator Name DEVON ENERGY PRODUCTION COMPANY, L.P.	Elevation 3325'

Surface Location

UL or lot No.	Section	Township	Range	Lot Idn	Feet from the	North/South line	Feet from the	East/West line	County
O	8	23 S	31 E		150	SOUTH	1700	EAST	EDDY

Bottom Hole Location If Different From Surface

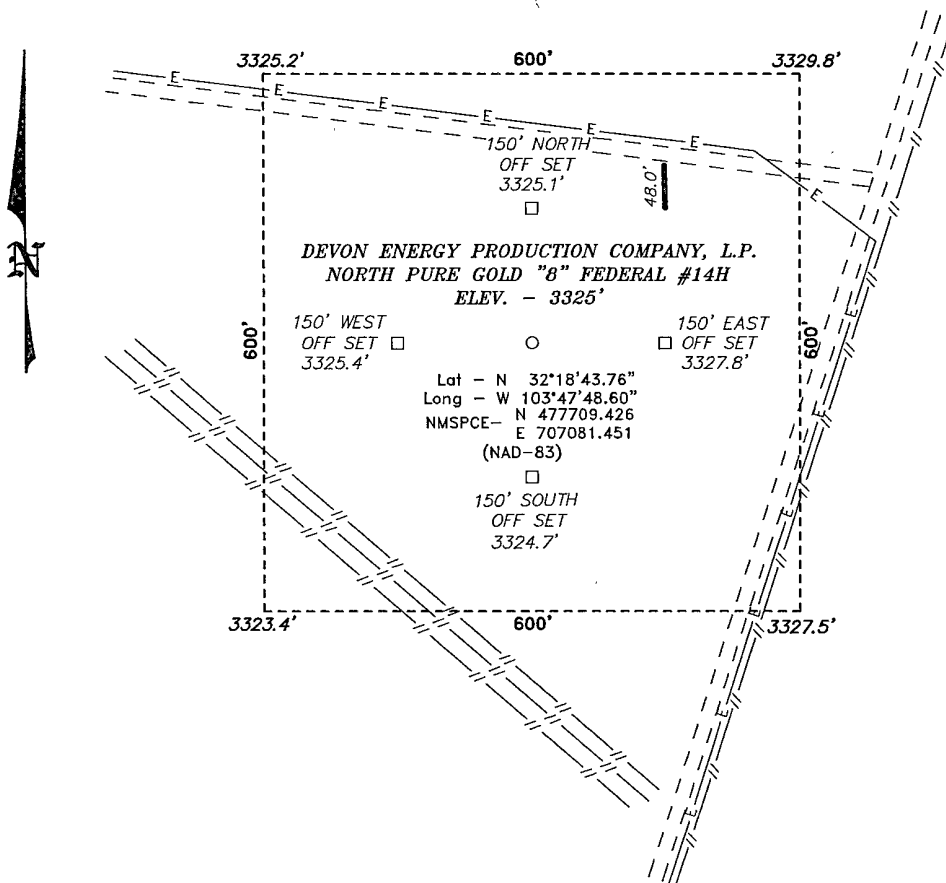
UL or lot No.	Section	Township	Range	Lot Idn	Feet from the	North/South line	Feet from the	East/West line	County
B	8	23 S	31 E		330	NORTH	1650	EAST	EDDY

Dedicated Acres 160	Joint or Infill	Consolidation Code	Order No.
-------------------------------	-----------------	--------------------	-----------

NO ALLOWABLE WILL BE ASSIGNED TO THIS COMPLETION UNTIL ALL INTERESTS HAVE BEEN CONSOLIDATED
OR A NON-STANDARD UNIT HAS BEEN APPROVED BY THE DIVISION

<p>N 482812.7440 E 703478.4550</p> <p>PROPOSED BOTTOM HOLE LOCATION Lat - N 32°19'31.39" Long - W 103°47'48.09" NMSPCE- N 482522.983 E 707100.970 (NAD-83)</p> <p>N 482649.3480 E 706110.1050</p> <p>N 482658.8400 E 708748.6080</p> <p>N 480172.3870 E 703495.5350</p> <p>N 480218.2255 E 708764.5915</p> <p>N 477533.4520 E 703510.3320</p> <p>N 477549.0820 E 706142.2960</p> <p>N 477576.7210 E 708782.4250</p>	<p>PP: 150 FSL & 1700 FEL</p> <p>3325.2'</p> <p>3325.8'</p> <p>3327.5'</p> <p>1700'</p> <p>150'</p> <p>4814.6'</p> <p>1650'</p> <p>330'</p>	<p>OPERATOR CERTIFICATION</p> <p>I hereby certify that the information contained herein is true and complete to the best of my knowledge and belief, and that this organization either owns a working interest or unleased mineral interest in the land including the proposed bottom hole location or has a right to drill this well at this location pursuant to a contract with an owner of such a mineral or working interest, or to a voluntary pooling agreement or a compulsory pooling order heretofore entered by the division.</p> <p><i>Judy A. Barnett</i> 1/14/10 Signature Date</p> <p>Judy A. Barnett Printed Name Regulatory Analyst</p> <p>SURVEYOR CERTIFICATION</p> <p>I hereby certify that the well location shown on this plat was plotted from field notes of actual surveys made by me or under my supervision, and that the same is true and correct to the best of my belief.</p> <p>DATE SURVEYED SIGNATURE & SEAL OF PROFESSIONAL SURVEYOR</p> <p>Certificate No. Gary L. Jones 7977</p> <p>BASIN SURVEYS</p>
--	---	---

**SECTION 8, TOWNSHIP 23 SOUTH, RANGE 31 EAST, N.M.P.M.,
EDDY COUNTY, NEW MEXICO.**



Directions to Location:

FROM THE JUNCTION OF HWY 128 AND TWIN WELLS,
GO EAST ON TWIN WELLS 0.1 MILES TO LEASE ROAD,
ON LEASE ROAD GO NORTH 1.2 MILES TO LEASE
ROAD, ON LEASE ROAD GO WEST 200' TO PROPOSED
LEASE ROAD.

DEVON ENERGY PRODUCTION COMPANY, L.P.

REF: NORTH PURE GOLD "8" FEDERAL #14H / WELL PAD TOPO

THE NORTH PURE GOLD "8" FEDERAL #14H LOCATED 150'
FROM THE SOUTH LINE AND 1700' FROM THE EAST LINE OF
SECTION 8, TOWNSHIP 23 SOUTH, RANGE 31 EAST,
N.M.P.M., EDDY COUNTY, NEW MEXICO.

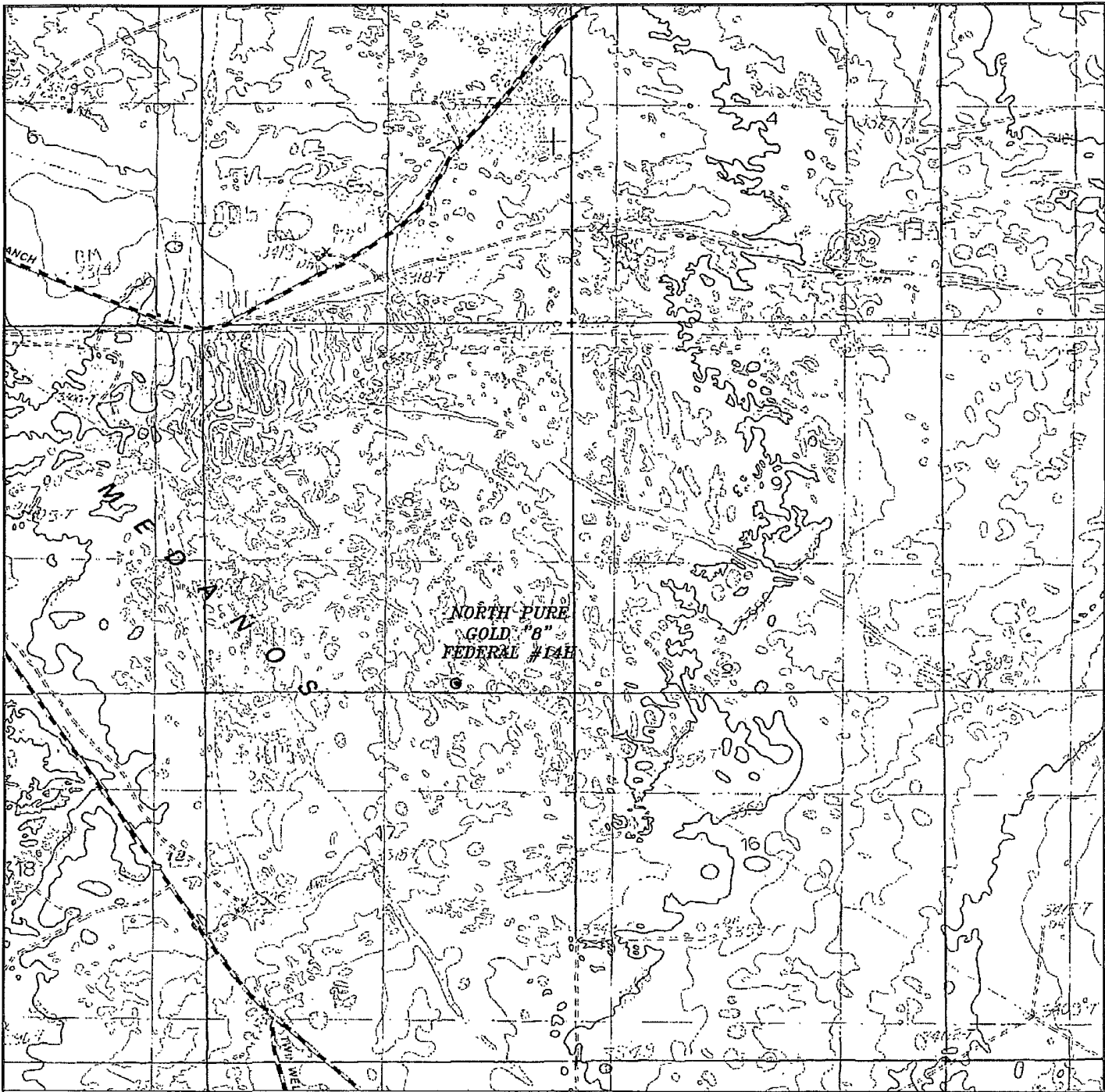
BASIN SURVEYS P.O. BOX 1786 - HOBBS, NEW MEXICO

W.O. Number: 22545 Drawn By: J. SMALL

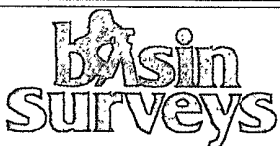
Date: 03-25-2010 Disk: JMS 22545

Survey Date: 03-25-2010

Sheet 1 of 1 Sheets



NORTH PURE GOLD "8" FEDERAL #14H
Located 150' FSL and 1700' FEL
Section 8, Township 23 South, Range 31 East,
N.M.P.M., Eddy County, New Mexico.



P.O. Box 1786
1120 N. West County Rd.
Hobbs, New Mexico 88241
(575) 393-7316 - Office
(575) 392-2206 - Fax
basinsurveys.com

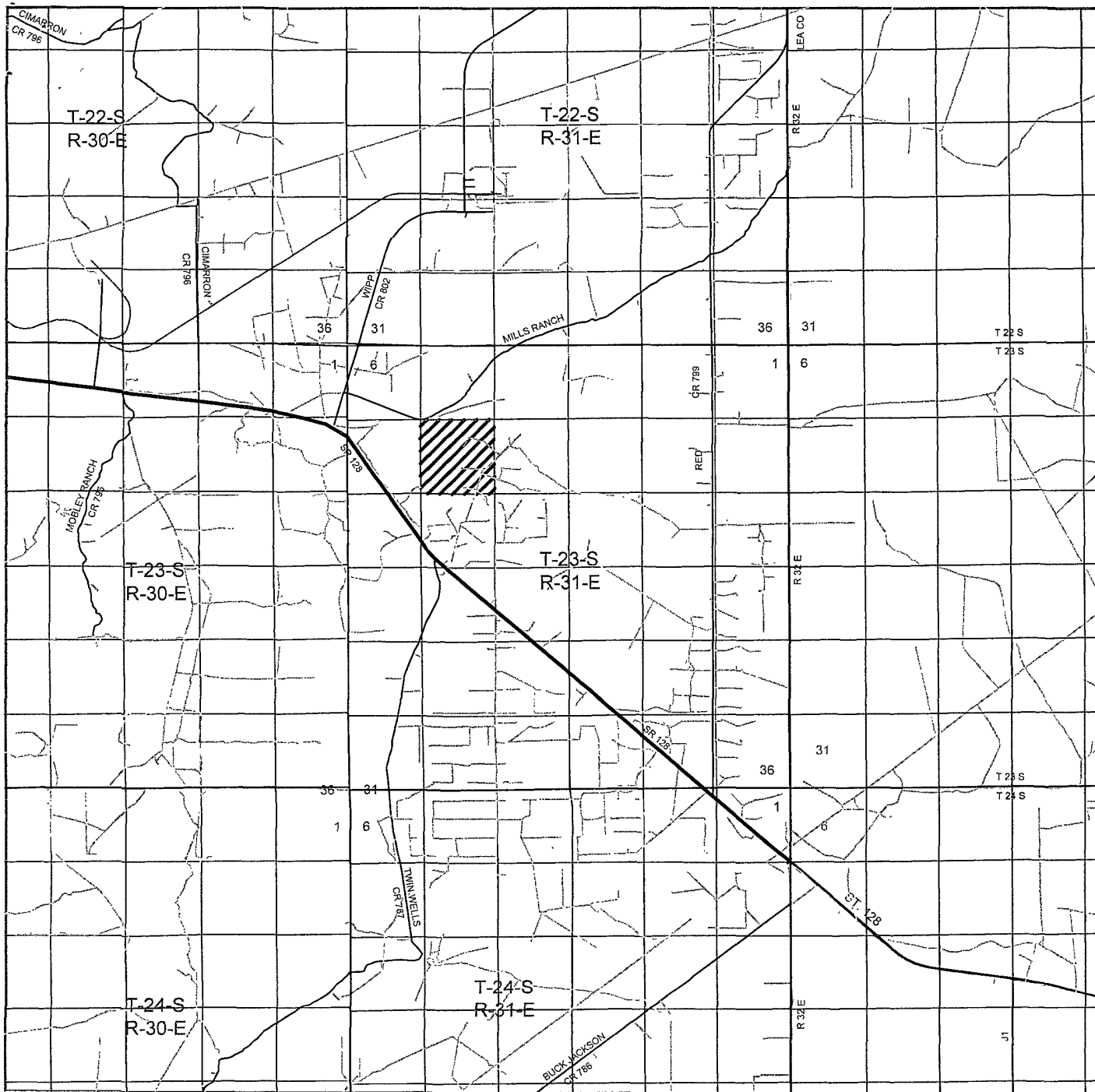
W.O. Number: JMS 22545

Survey Date: 03-25-2010

Scale: 1" = 2000'

Date: 03-25-2010

DEVON ENERGY
PRODUCTION
COMPANY, L.P.



NORTH PURE GOLD "8" FEDERAL #14H
 Located 150' FSL and 1700' FEL
 Section 8, Township 23 South, Range 31 East,
 N.M.P.M., Eddy County, New Mexico.

basin
surveys
 focused on excellence
 in the oilfield

P.O. Box 1786
 1120 N. West County Rd.
 Hobbs, New Mexico 88241
 (575) 393-7316 - Office
 (575) 392-2206 - Fax
 basinsurveys.com

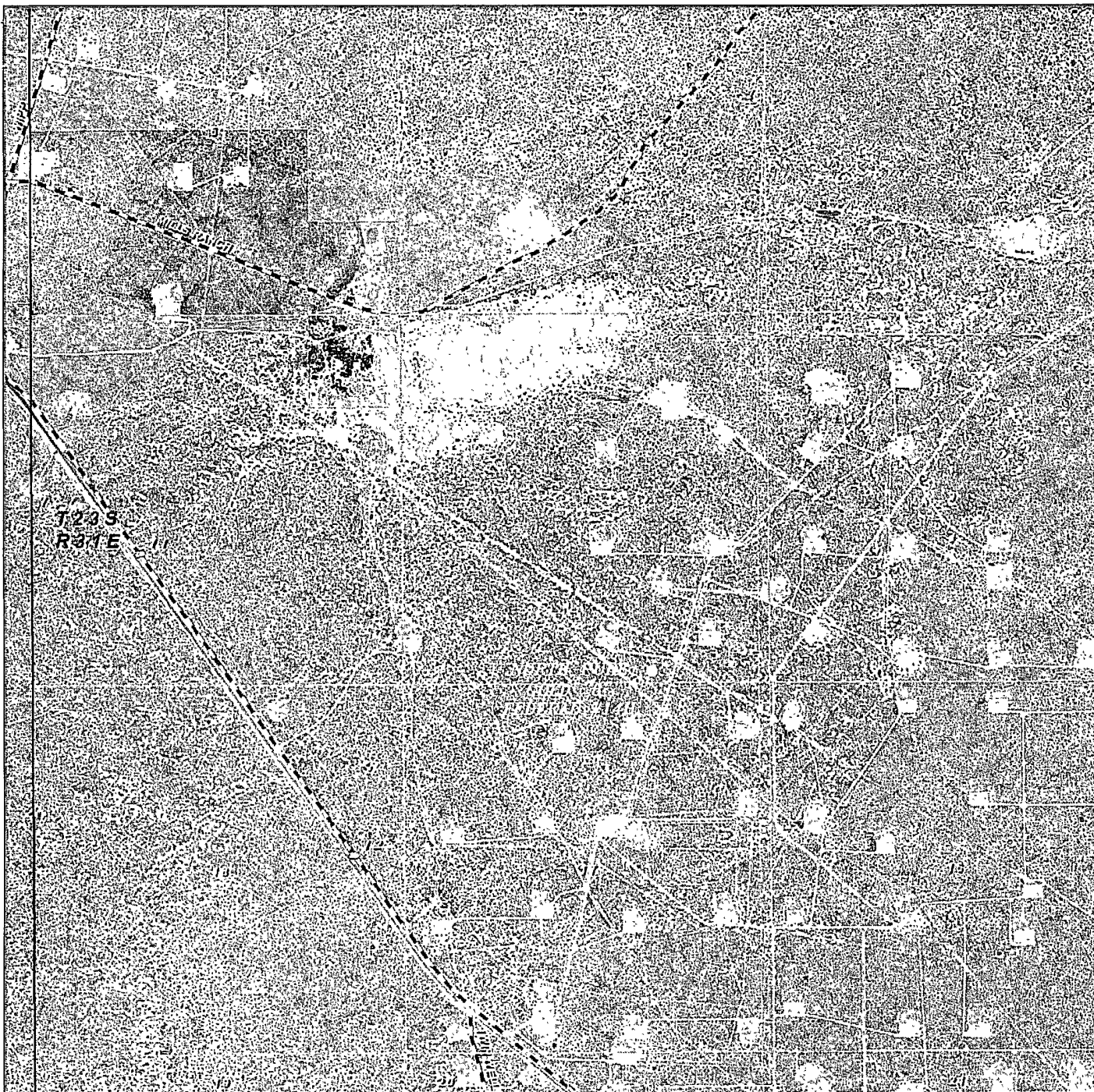
W.O. Number: JMS 22545

Survey Date: 03-25-2010

Scale: 1" = 2 Miles

Date: 03-25-2010

DEVON ENERGY
PRODUCTION
COMPANY, L.P.



NORTH PURE GOLD "8" FEDERAL #14H
Located 150' FSL and 1700' FEL
Section 8, Township 23 South, Range 31 East,
N.M.P.M., Eddy County, New Mexico.



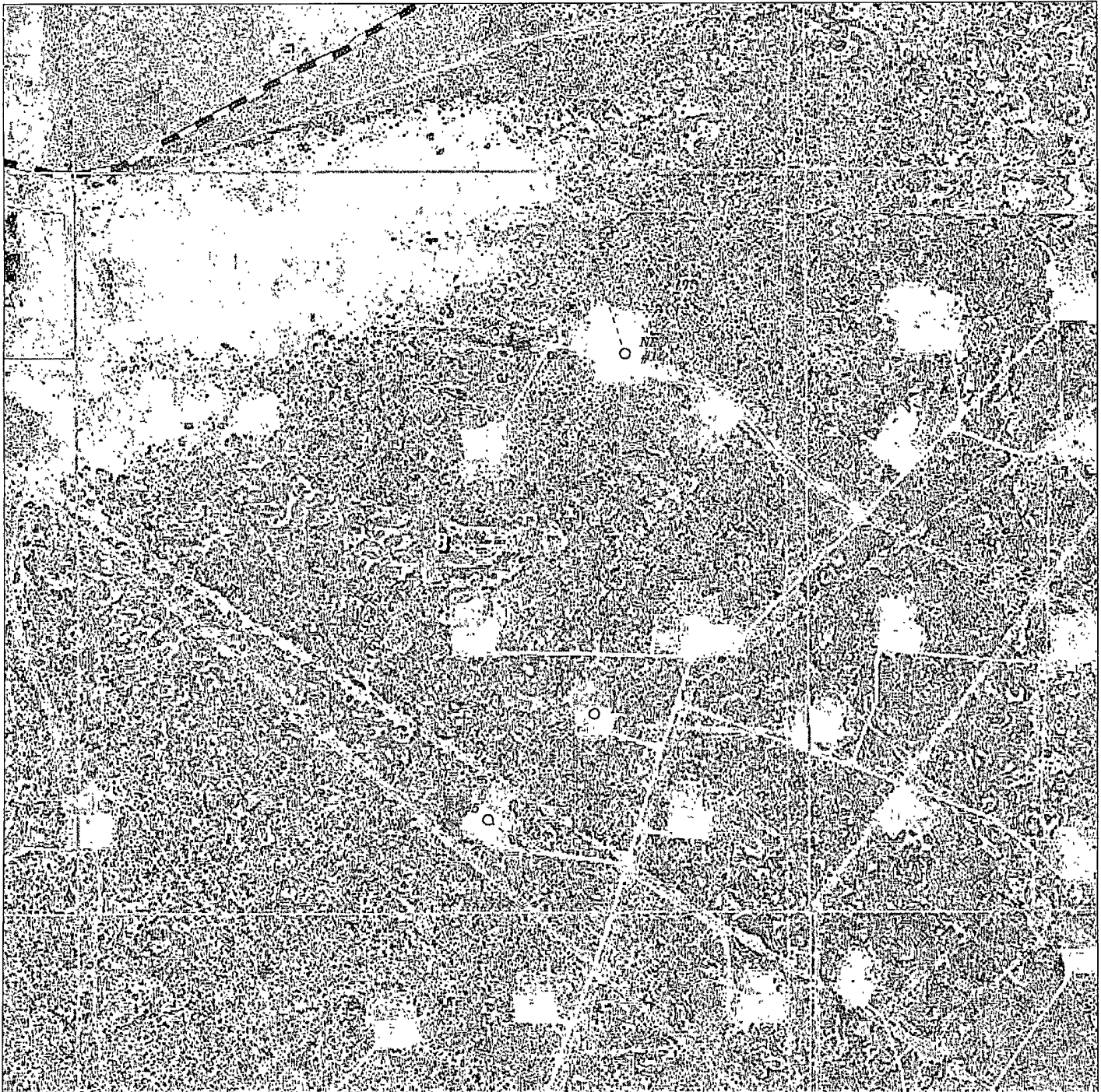
P.O. Box 1786
1120 N. West County Rd.
Hobbs, New Mexico 88241
(575) 393-7316 - Office
(575) 392-2206 - Fax
basinsurveys.com

W.O. Number: JMS 22545

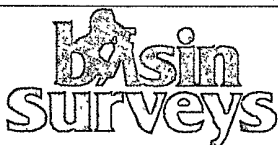
Scale: 1" = 2000'

YELLOW TINT - USA LAND
BLUE TINT - STATE LAND
NATURAL COLOR - FEE LAND

DEVON ENERGY
PRODUCTION
COMPANY, L.P.



NORTH PURE GOLD "8" FEDERAL #14H
Located 150' FSL and 1700' FEL
Section 8, Township 23 South, Range 31 East,
N.M.P.M., Eddy County, New Mexico.



focused on excellence
in the oilfield

P.O. Box 1786
1120 N. West County Rd.
Hobbs, New Mexico 88241
(575) 393-7316 - Office
(575) 392-2206 - Fax
basinsurveys.com

W.O. Number: JMS 22545

Scale: 1" = 1000'

YELLOW TINT - USA LAND
BLUE TINT - STATE LAND
NATURAL COLOR - FEE LAND

DEVON ENERGY
PRODUCTION
COMPANY, L.P.

The map displays the North Pure Gold "8" Fed 14H wellbore area, centered on the wellbore. A 1-mile radius circle is drawn around the wellbore, with a 1-mile radius line extending from the center. The map includes various wellbore locations, including James Ranch, Pure Gold, and Medano VA. Key features include a 1-mile radius circle, a 1-mile radius line, and a 1-mile radius line. The map also shows the location of the wellbore relative to the 1-mile radius circle. The map includes a scale bar and a north arrow.

Wellbore Locations:

- James Ranch Ut 73, 74, 65, 79, 13, 17, 76, 75, 85, 4, 85, 30, 87, 14, 101, 102, 15, 56, 57, 55, 14, 12, 1, 7, 11, 13, 17, 11, 12, 13, 14, 15, 16, 17, 18, 19, 20, 21, 22, 23, 24, 25, 26, 27, 28, 29, 30, 31, 32, 33, 34, 35, 36, 37, 38, 39, 40, 41, 42, 43, 44, 45, 46, 47, 48, 49, 50, 51, 52, 53, 54, 55, 56, 57, 58, 59, 60, 61, 62, 63, 64, 65, 66, 67, 68, 69, 70, 71, 72, 73, 74, 75, 76, 77, 78, 79, 80, 81, 82, 83, 84, 85, 86, 87, 88, 89, 90, 91, 92, 93, 94, 95, 96, 97, 98, 99, 100, 101, 102, 103, 104, 105, 106, 107, 108, 109, 110, 111, 112, 113, 114, 115, 116, 117, 118, 119, 120, 121, 122, 123, 124, 125, 126, 127, 128, 129, 130, 131, 132, 133, 134, 135, 136, 137, 138, 139, 140, 141, 142, 143, 144, 145, 146, 147, 148, 149, 150, 151, 152, 153, 154, 155, 156, 157, 158, 159, 160, 161, 162, 163, 164, 165, 166, 167, 168, 169, 170, 171, 172, 173, 174, 175, 176, 177, 178, 179, 180, 181, 182, 183, 184, 185, 186, 187, 188, 189, 190, 191, 192, 193, 194, 195, 196, 197, 198, 199, 200, 201, 202, 203, 204, 205, 206, 207, 208, 209, 210, 211, 212, 213, 214, 215, 216, 217, 218, 219, 220, 221, 222, 223, 224, 225, 226, 227, 228, 229, 230, 231, 232, 233, 234, 235, 236, 237, 238, 239, 240, 241, 242, 243, 244, 245, 246, 247, 248, 249, 250, 251, 252, 253, 254, 255, 256, 257, 258, 259, 260, 261, 262, 263, 264, 265, 266, 267, 268, 269, 270, 271, 272, 273, 274, 275, 276, 277, 278, 279, 280, 281, 282, 283, 284, 285, 286, 287, 288, 289, 290, 291, 292, 293, 294, 295, 296, 297, 298, 299, 300, 301, 302, 303, 304, 305, 306, 307, 308, 309, 310, 311, 312, 313, 314, 315, 316, 317, 318, 319, 320, 321, 322, 323, 324, 325, 326, 327, 328, 329, 330, 331, 332, 333, 334, 335, 336, 337, 338, 339, 340, 341, 342, 343, 344, 345, 346, 347, 348, 349, 350, 351, 352, 353, 354, 355, 356, 357, 358, 359, 360, 361, 362, 363, 364, 365, 366, 367, 368, 369, 370, 371, 372, 373, 374, 375, 376, 377, 378, 379, 380, 381, 382, 383, 384, 385, 386, 387, 388, 389, 390, 391, 392, 393, 394, 395, 396, 397, 398, 399, 400, 401, 402, 403, 404, 405, 406, 407, 408, 409, 410, 411, 412, 413, 414, 415, 416, 417, 418, 419, 420, 421, 422, 423, 424, 425, 426, 427, 428, 429, 430, 431, 432, 433, 434, 435, 436, 437, 438, 439, 440, 441, 442, 443, 444, 445, 446, 447, 448, 449, 450, 451, 452, 453, 454, 455, 456, 457, 458, 459, 460, 461, 462, 463, 464, 465, 466, 467, 468, 469, 470, 471, 472, 473, 474, 475, 476, 477, 478, 479, 480, 481, 482, 483, 484, 485, 486, 487, 488, 489, 490, 491, 492, 493, 494, 495, 496, 497, 498, 499, 500, 501, 502, 503, 504, 505, 506, 507, 508, 509, 510, 511, 512, 513, 514, 515, 516, 517, 518, 519, 520, 521, 522, 523, 524, 525, 526, 527, 528, 529, 530, 531, 532, 533, 534, 535, 536, 537, 538, 539, 540, 541, 542, 543, 544, 545, 546, 547, 548, 549, 550, 551, 552, 553, 554, 555, 556, 557, 558, 559, 560, 561, 562, 563, 564, 565, 566, 567, 568, 569, 570, 571, 572, 573, 574, 575, 576, 577, 578, 579, 580, 581, 582, 583, 584, 585, 586, 587, 588, 589, 590, 591, 592, 593, 594, 595, 596, 597, 598, 599, 600, 601, 602, 603, 604, 605, 606, 607, 608, 609, 610, 611, 612, 613, 614, 615, 616, 617, 618, 619, 620, 621, 622, 623, 624, 625, 626, 627, 628, 629, 630, 631, 632, 633, 634, 635, 636, 637, 638, 639, 640, 641, 642, 643, 644, 645, 646, 647, 648, 649, 650, 651, 652, 653, 654, 655, 656, 657, 658, 659, 660, 661, 662, 663, 664, 665, 666, 667, 668, 669, 670, 671, 672, 673, 674, 675, 676, 677, 678, 679, 680, 681, 682, 683, 684, 685, 686, 687, 688, 689, 690, 691, 692, 693, 694, 695, 696, 697, 698, 699, 700, 701, 702, 703, 704, 705, 706, 707, 708, 709, 710, 711, 712, 713, 714, 715, 716, 717, 718, 719, 720, 721, 722, 723, 724, 725, 726, 727, 728, 729, 730, 731, 732, 733, 734, 735, 736, 737, 738, 739, 740, 741, 742, 743, 744, 745, 746, 747, 748, 749, 750, 751, 752, 753, 754, 755, 756, 757, 758, 759, 760, 761, 762, 763, 764, 765, 766, 767, 768, 769, 770, 771, 7

DRILLING PROGRAM

Devon Energy Production Company, LP

North Pure Gold 8 Federal 14H

Surface Location: 150 FSL & 1700 FEL, Unit O, Sec 8 T23S R31E, Eddy, NM

Bottom hole Location: 330 FNL & 1650 FEL, Unit B, Sec 8 T23S R31E, Eddy, NM

1. Geologic Name of Surface Formation

a. Quaternary

2. Estimated Tops of Geological Markers & Depths of Anticipated Fresh Water, Oil or Gas:

a. Fresh Water	550'	
b. Rustler	372'	
c. Salado	692'	
d. Base Salt	3800'	
e. Delaware/Lamar	4056'	
f. Bell Canyon	4094'	
g. Cherry Canyon	5019'	
h. Bone Spring	7988'	Oil & Gas
i. Total Depth	13,218'	

No other formations are expected to yield oil, gas or fresh water in measurable volumes. The surface fresh water sands will be protected by setting 13 3/8" casing at 425' and circulating cement back to surface. Potash / fresh water sands will be protected by setting 9 5/8" casing at 4000' and circulating cement to surface. The Delaware intervals will be isolated by setting 5 1/2" casing to total depth and circulating cement.

3. Casing Program:

<u>Hole</u> <u>Size</u>	<u>Hole</u> <u>Interval</u>	<u>OD Csg</u>	<u>Casing</u> <u>Interval</u>	<u>Weight</u>	<u>Collar</u>	<u>Grade</u>
17 1/2"	0'-425'	13 3/8"	0'-425'	48#	ST&C	H-40
12 1/4"	425'-3000'	9 5/8"	0-3000'	36#	LT&C	J-55
12 1/4"	3000'-4000'	9 5/8"	3000'-4000'	40#	LT&C	J-55
8 3/4"	4000'-8000'	5 1/2"	0'-8000'	17#	LT&C	N-80
8 3/4"	8000-13,218	5 1/2"	8000-13.218	17#	BT&C	N-80

Design Parameter Factors:

<u>Casing Size</u>	<u>Collapse Design</u> <u>Factor</u>	<u>Burst Design</u> <u>Factor</u>	<u>Tension Design</u> <u>Factor</u>
13 3/8"	3.87	8.70	15.78
9 5/8" 36#	1.29	2.26	3.06
9 5/8" 40#	1.24	1.90	13.00
5 1/2" 17# N80 LTC	1.68	2.07	1.55
5 1/2" 17# N80 BTC	1.55	1.91	5.03

4. **Cement Program:**

a. 13 3/8" Surface

Lead w/ 235 sx Class C + 2% bwoc Calcium Chloride + 0.125#/sx CF + 4% bwoc Bentonite + 81.4% FW, 13.5 ppg. Yld 1.75 cf/sx. TOC @ surface. **Tail** w/ 250 sx Class C + 2% bwoc Calcium Chloride + 0.125#/sx CF + 56.3% FW, 14.8 ppg. Yld 1.35 cf/sx

b. 9 5/8" Intermediate

Lead w/ 1150 sx 35:65 POZ (Fly Ash): Class C + 5% bwow Sodium Chloride + 0.125#/sx CF + 6% bwoc Bentonite + 107.8% FW, 12.5 ppg. Yld 2.04 cf/sx. TOC @ surface. **Tail** w/ 300 sx 60:40 POZ (Fly Ash): Class C + 5% bwow Sodium Chloride + 0.125#/sx CF + 4% bwoc MPA-5 + 64.7% FW, 13.8 ppg. Yld 1.37 cf/sx.

c. 5 1/2" Production

Stage 1: **Lead** w/ 500 sx 35:65 POZ (Fly Ash) Class H + 5% bwow Sodium Chloride + 0.3% bwoc CD-32 + 0.5% bwoc FL-25 + 2% bwoc Bentonite + 0.6% bwoc Sodium Metasilicate + 0.5% bwoc FL-52A + 102.5% FW, 12.5 ppg. Yld 2.01 cf/sx. **Tail** w/ 1520 sx 50:50 POZ (Fly Ash) Class H + 1% bwow Sodium Chloride + 0.2% bwoc R-3 + 0.125#/sx. CF + 0.5% bwoc BA-10A + 4% bwoc MPA-5 + 58.3% FW, 14.2 ppg. Yld 1.31 cf/sx.

DV Tool @ 6000'

Stage 2: **Lead** w/ 400 sx Class C + 1% bwow Sodium Chloride + 0.125#/sx CF + 157.8 % FW, 11.4 ppg. Yld 2.89 cf/sx. **Tail:** 100 sx 60:40 POZ Fly Ash Class C + 5% bwow Sodium Chloride + 0.125#/sx CF + 4% bwoc MPA-5 + 65.4% FW, 13.8 ppg. Yld: 1.37 cf/sx.

DV Tool @ 3500'

3rd Stage **Lead** w/ 350 sx Class C + 5% bwow Sodium Chloride + 0.125#/sx CF + 157.8% FW, 11.4 ppg. Yld 2.91 cf/sx. TOC @ surface. **Tail** w/ 100 sx 60:40 POZ (Fly Ash) Class C + 5% bwow Sodium Chloride 0.125#/sx CF + 4% bwoc MPA-5 + 65.4% FW. 13.8 ppg. Yld 1.37 cf/sx.

See
COA

The above cement volumes could be revised pending the caliper measurement from the open hole logs. All casing is new and API approved.

The BOP system used to drill the intermediate hole will consist of a 13-5/8" 5M Double Ram and Annular preventer. The BOP system will be tested as per BLM Onshore Oil and Gas Order No. 2 as a 3M system prior to drilling out the surface casing shoe.

The BOP system used to drill the production hole will consist of a 13-5/8" 5M Double Ram and Annular preventer. The BOP system will be tested as per BLM Onshore Oil and Gas Order No. 2 as a 5M system prior to drilling out the intermediate casing shoe.

The pipe rams will be operated and checked each 24 hour period and each time the drill pipe is out of the hole. These tests will be logged in the daily driller's log. A 2" kill line and 3" choke line will be incorporated into the drilling spool below the ram BOP. In addition to the rams and annular preventer, additional BOP accessories include a kelly cock, floor safety valve, choke lines, and choke manifold rated at 5,000 psi WP.

Devon Energy Production Company L. P. requests a variance if H & P Rig #214 is used to drill this well, a co-flex hose may be used between the BOP and the choke manifold. The hose will be kept as straight as possible with minimal turns. CO-Flex Hose Manufacturer: Phoenix Beattie; ~33' (11.43 meters) of co-flex line; 3" coupling w/ 4 1/16" flange on each end – 10,000 psi; Quality Control Inspection & Test Certificate attached; See configuration schematic. Safety clamps are not required since the ends are flanged. See attachments.

See
COA

5. Proposed Mud Circulation System

<u>Depth</u>	<u>Mud Wt.</u>	<u>Visc</u>	<u>Fluid Loss</u>	<u>Type System</u>
0' – 425'	8.4-9.0	30-34	NC	FW
425' – 4000'	9.8-10.0	28-32	NC	Brine
4000' – 13,218'	8.6-9.0	28-32	NC-12	FW

The necessary mud products for weight addition and fluid loss control will be on location at all times.

6. Auxiliary Well Control and Monitoring Equipment:

- A Kelly cock will be in the drill string at all times.
- A full opening drill pipe stabbing valve having the appropriate connections will be on the rig floor at all times.
- Hydrogen Sulfide detection equipment will be in operation after drilling out the 13 3/8" casing shoe until the 4 1/2" liner is cemented. Breathing equipment will be on location upon drilling the 13 3/8" shoe until total depth is reached.

7. Logging, Coring, and Testing Program: See COA

- Drill stem tests will be based on geological sample shows.
- If a drill stem test is anticipated; a procedure, equipment to be used and safety measures will be provided via sundry notice to the BLM.
- The open hole electrical logging program will be:
 - Total Depth to Intermediate Casing and Gamma Ray. Compensated Neutron – Z Density log with Gamma Ray and Caliper. Dual Laterolog-Micro Laterolog with SP
 - Total Depth to Surface Compensated Neutron with Gamma Ray
 - No coring program is planned
 - Additional testing will be initiated subsequent to setting the 5 1/2" production casing. Specific intervals will be targeted based on log evaluation, geological sample shows and drill stem tests.

8. Potential Hazards:

- a. No abnormal pressures or temperatures are expected. There is no known presence of H₂S in this area. If H₂S is encountered the operator will comply with the provisions of Onshore Oil and Gas Order No. 6. No lost circulation is expected to occur. All personnel will be familiar with all aspects of safe operation of equipment being used to drill this well. Estimated BHP 4600 psi and Estimated BHT 140°. No H₂S is anticipated to be encountered.

9. Anticipated Starting Date and Duration of Operations:

- a. Road and location construction will begin after the BLM has approved the APD. Anticipated spud date will be as soon after BLM approval and as soon as a rig will be available. Move in operations and drilling is expected to take 32 days. If production casing is run then an additional 30 days will be needed to complete well and construct surface facilities and/or lay flow lines in order to place well on production.



Weatherford®

Drilling Services

Proposal



devon

NORTH PURE GOLD 8 FEDERAL #14H

EDDY COUNTY, NM

WELL FILE: PLAN 1

APRIL 5, 2010

Weatherford International, Ltd.

P.O. Box 61028

Midland, TX 79711 USA

+1.432.561.8892 Main

+1.432.561.8895 Fax

www.weatherford.com

devon

North Pure Gold 8 FED #14H
Eddy Co., NM

Rig H&P 214

SECTION DETAILS

Sec	MD	Inc	Azi	TVD	+N/-S	+E/-W	DLeg	TFace	VSec	Target
1	0.00	0.00	0.23	0.00	0.00	0.00	0.00	0.00	0.00	
2	8077.04	0.00	0.23	8077.04	0.00	0.00	0.00	0.00	0.00	
3	8977.04	90.00	0.23	8650.00	572.95	2.32	10.00	0.23	572.96	
4	13217.68	90.00	0.23	8650.00	4813.56	19.52	0.00	0.00	4813.60	Pbhl

WELL DETAILS

Name	+N/-S	+E/-W	Northing	Easting	Latitude	Longitude	Slot
NPG 8 Fed #14H	0.00	0.00	477709.43	707081.45	32°18'43.751N	103°47'48.614W	N/A

TARGET DETAILS

Name	TVD	+N/-S	+E/-W	Northing	Easting	Shape
Pbhl	8650.00	4813.56	19.52	482522.98	707100.97	Point

FIELD DETAILS

Eddy Co., NM (NAD 83)

Geodetic System: US State Plane Coordinate System 1983
Ellipsoid: GRS 1980
Zone: New Mexico, Eastern Zone
Magnetic Model: IGRF2010
System Datum: Mean Sea Level
Local North: Grid North

SITE DETAILS

North Pure Gold 8 Federal #14H
Site Centre Northing: 477709.43
Easting: 707081.45

Ground Level: 3325.00
Positional Uncertainty: 0.00
Convergence: 0.29



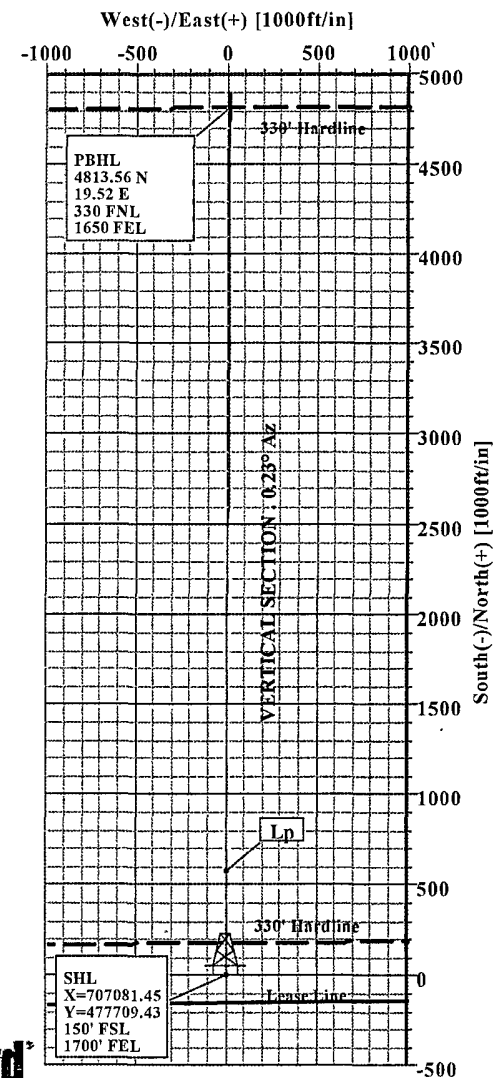
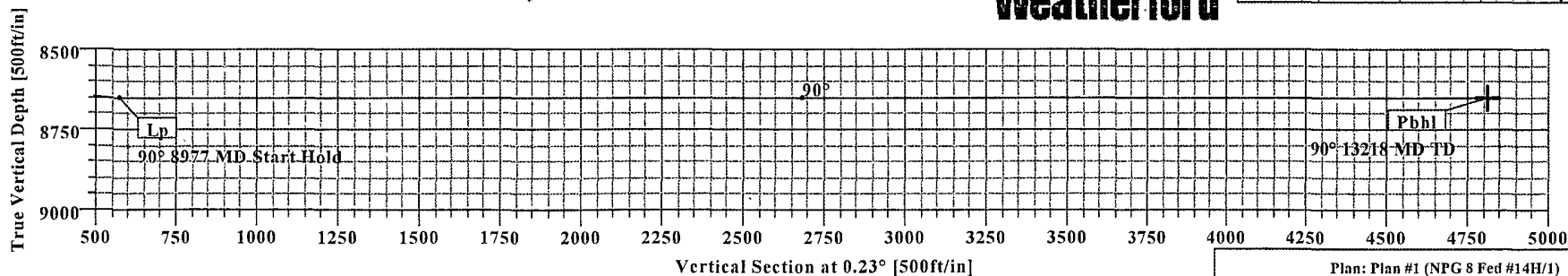
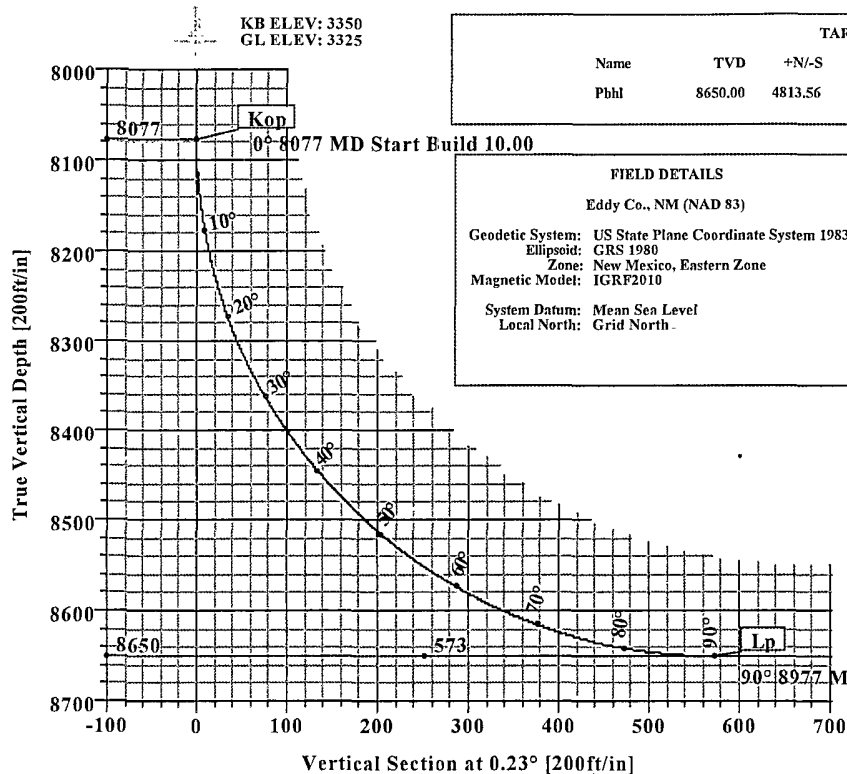
Azimuths to Grid North
True North: -0.29°
Magnetic North: 7.52°

Magnetic Field
Strength: 48758nT
Dip Angle: 60.25°
Date: 7/30/2010
Model: IGRF2010

Total Correction to Grid North: 7.52°



Weatherford



Plan: Plan #1 (NPG 8 Fed #14H/1)

Created By: Russell W Joyner

Date: 4/5/2010



Weatherford International Ltd.

WFT Plan Report - X & Y's



Company: Devon Energy Date: 4/5/2010 Time: 08:57:15 Page: 1
Field: Eddy Co., NM (NAD 83) Co-ordinate(NE) Reference: Well: NPG 8 Fed #14H, Grid North
Site: North Pure Gold 8 Federal #14H Vertical (TVD) Reference: SITE 3350.0
Well: NPG 8 Fed #14H Section (VS) Reference: Well (0.00N,0.00E,0.23Azi)
Wellpath: 1 Survey Calculation Method: Minimum Curvature Db: Sybase

Field: Eddy Co., NM (NAD 83)

Map System: US State Plane Coordinate System 1983
Geo Datum: GRS 1980
Sys Datum: Mean Sea Level

Map Zone: New Mexico, Eastern Zone
Coordinate System: Well Centre
Geomagnetic Model: IGRF2010

Site: North Pure Gold 8 Federal #14H

Site Position: Northing: 477709.43 ft Latitude: 32 18 43.751 N
From: Map Easting: 707081.45 ft Longitude: 103 47 48.614 W
Position Uncertainty: 0.00 ft North Reference: Grid
Ground Level: 3325.00 ft Grid Convergence: 0.29 deg

Well: NPG 8 Fed #14H

Slot Name:

Well Position: +N/-S 0.00 ft Northing: 477709.43 ft Latitude: 32 18 43.751 N
+E/-W 0.00 ft Easting: 707081.45 ft Longitude: 103 47 48.614 W
Position Uncertainty: 0.00 ft

Wellpath: 1

Drilled From: Surface
Tie-on Depth: 0.00 ft
Above System Datum: Mean Sea Level
Declination: 7.80 deg
Mag Dip Angle: 60.25 deg
+E/-W Direction deg

Current Datum: SITE Height 3350.00 ft
Magnetic Data: 7/30/2010
Field Strength: 48758 nT
Vertical Section: Depth From (TVD) ft
8650.00 0.00 0.00 0.23

Plan Section Information

MD ft	Incl deg	Azim deg	TVD ft	+N/-S ft	+E/-W ft	DLS deg/100ft	Build deg/100ft	Turn deg/100ft	TFO deg	Target
0.00	0.00	0.23	0.00	0.00	0.00	0.00	0.00	0.00	0.00	
8077.04	0.00	0.23	8077.04	0.00	0.00	0.00	0.00	0.00	0.00	
8977.04	90.00	0.23	8650.00	572.95	2.32	10.00	10.00	0.00	0.23	
13217.68	90.00	0.23	8650.00	4813.56	19.52	0.00	0.00	0.00	0.00	Pbhl

Survey

MD ft	Incl deg	Azim deg	TVD ft	N/S ft	E/W ft	VS ft	DLS deg/100ft	MapN ft	MapE ft	Comment
8000.00	0.00	0.23	8000.00	0.00	0.00	0.00	0.00	477709.43	707081.45	Kop
8077.04	0.00	0.23	8077.04	0.00	0.00	0.00	0.00	477709.43	707081.45	
8100.00	2.30	0.23	8099.99	0.46	0.00	0.46	10.00	477709.89	707081.45	
8200.00	12.30	0.23	8199.06	13.14	0.05	13.14	10.00	477722.57	707081.50	
8300.00	22.30	0.23	8294.42	42.84	0.17	42.84	10.00	477752.26	707081.62	
8400.00	32.30	0.23	8383.17	88.64	0.36	88.64	10.00	477798.06	707081.81	Lp
8500.00	42.30	0.23	8462.62	149.15	0.60	149.15	10.00	477858.58	707082.06	
8600.00	52.30	0.23	8530.35	222.54	0.90	222.55	10.00	477931.97	707082.35	
8700.00	62.30	0.23	8584.32	306.58	1.24	306.59	10.00	478016.01	707082.69	
8800.00	72.30	0.23	8622.86	398.72	1.62	398.72	10.00	478108.14	707083.07	
8900.00	82.30	0.23	8644.83	496.14	2.01	496.15	10.00	478205.57	707083.46	
8977.04	90.00	0.23	8650.00	572.95	2.32	572.96	10.00	478282.38	707083.77	
9000.00	90.00	0.23	8650.00	595.91	2.42	595.92	0.00	478305.34	707083.87	
9100.00	90.00	0.23	8650.00	695.91	2.82	695.92	0.00	478405.34	707084.27	
9200.00	90.00	0.23	8650.00	795.91	3.23	795.92	0.00	478505.34	707084.68	
9300.00	90.00	0.23	8650.00	895.91	3.63	895.92	0.00	478605.33	707085.08	
9400.00	90.00	0.23	8650.00	995.91	4.04	995.92	0.00	478705.33	707085.49	
9500.00	90.00	0.23	8650.00	1095.91	4.44	1095.92	0.00	478805.33	707085.89	
9600.00	90.00	0.23	8650.00	1195.91	4.85	1195.92	0.00	478905.33	707086.30	
9700.00	90.00	0.23	8650.00	1295.90	5.25	1295.92	0.00	479005.33	707086.71	



Weatherford International Ltd.

WFT Plan Report - X & Y's



Company: Devon Energy
Field: Eddy Co., NM (NAD 83)
Site: North Pure Gold 8 Federal #14H
Well: NPG 8 Fed #14H
Wellpath: 1

Date: 4/5/2010 Time: 08:57:15 Page: 2
Co-ordinate(NE) Reference: Well: NPG 8 Fed #14H, Grid North
Vertical (TVD) Reference: SITE 3350.0
Section (VS) Reference: Well (0.00N,0.00E,0.23Azi)
Survey Calculation Method: Minimum Curvature Db: Sybase

Survey

MD ft	Incl. deg	Azim deg	TVD ft	N/S ft	E/W ft	VS ft	DLS deg/100ft	MapN ft	MapE ft	Comment
9800.00	90.00	0.23	8650.00	1395.90	5.66	1395.92	0.00	479105.33	707087.11	
9900.00	90.00	0.23	8650.00	1495.90	6.07	1495.92	0.00	479205.33	707087.52	
10000.00	90.00	0.23	8650.00	1595.90	6.47	1595.92	0.00	479305.33	707087.92	
10100.00	90.00	0.23	8650.00	1695.90	6.88	1695.92	0.00	479405.33	707088.33	
10200.00	90.00	0.23	8650.00	1795.90	7.28	1795.92	0.00	479505.33	707088.73	
10300.00	90.00	0.23	8650.00	1895.90	7.69	1895.92	0.00	479605.33	707089.14	
10400.00	90.00	0.23	8650.00	1995.90	8.09	1995.92	0.00	479705.33	707089.54	
10500.00	90.00	0.23	8650.00	2095.90	8.50	2095.92	0.00	479805.32	707089.95	
10600.00	90.00	0.23	8650.00	2195.90	8.90	2195.92	0.00	479905.32	707090.36	
10700.00	90.00	0.23	8650.00	2295.90	9.31	2295.92	0.00	480005.32	707090.76	
10800.00	90.00	0.23	8650.00	2395.90	9.72	2395.92	0.00	480105.32	707091.17	
10900.00	90.00	0.23	8650.00	2495.90	10.12	2495.92	0.00	480205.32	707091.57	
11000.00	90.00	0.23	8650.00	2595.89	10.53	2595.92	0.00	480305.32	707091.98	
11100.00	90.00	0.23	8650.00	2695.89	10.93	2695.92	0.00	480405.32	707092.38	
11200.00	90.00	0.23	8650.00	2795.89	11.34	2795.92	0.00	480505.32	707092.79	
11300.00	90.00	0.23	8650.00	2895.89	11.74	2895.92	0.00	480605.32	707093.19	
11400.00	90.00	0.23	8650.00	2995.89	12.15	2995.92	0.00	480705.32	707093.60	
11500.00	90.00	0.23	8650.00	3095.89	12.55	3095.92	0.00	480805.32	707094.00	
11600.00	90.00	0.23	8650.00	3195.89	12.96	3195.92	0.00	480905.32	707094.41	
11700.00	90.00	0.23	8650.00	3295.89	13.36	3295.92	0.00	481005.31	707094.82	
11800.00	90.00	0.23	8650.00	3395.89	13.77	3395.92	0.00	481105.31	707095.22	
11900.00	90.00	0.23	8650.00	3495.89	14.18	3495.92	0.00	481205.31	707095.63	
12000.00	90.00	0.23	8650.00	3595.89	14.58	3595.92	0.00	481305.31	707096.03	
12100.00	90.00	0.23	8650.00	3695.89	14.99	3695.92	0.00	481405.31	707096.44	
12200.00	90.00	0.23	8650.00	3795.88	15.39	3795.92	0.00	481505.31	707096.84	
12300.00	90.00	0.23	8650.00	3895.88	15.80	3895.92	0.00	481605.31	707097.25	
12400.00	90.00	0.23	8650.00	3995.88	16.20	3995.92	0.00	481705.31	707097.65	
12500.00	90.00	0.23	8650.00	4095.88	16.61	4095.92	0.00	481805.31	707098.06	
12600.00	90.00	0.23	8650.00	4195.88	17.01	4195.92	0.00	481905.31	707098.47	
12700.00	90.00	0.23	8650.00	4295.88	17.42	4295.92	0.00	482005.31	707098.87	
12800.00	90.00	0.23	8650.00	4395.88	17.83	4395.92	0.00	482105.31	707099.28	
12900.00	90.00	0.23	8650.00	4495.88	18.23	4495.92	0.00	482205.30	707099.68	
13000.00	90.00	0.23	8650.00	4595.88	18.64	4595.92	0.00	482305.30	707100.09	
13100.00	90.00	0.23	8650.00	4695.88	19.04	4695.92	0.00	482405.30	707100.49	
13200.00	90.00	0.23	8650.00	4795.88	19.45	4795.92	0.00	482505.30	707100.90	
13217.68	90.00	0.23	8650.00	4813.56	19.52	4813.60	0.00	482522.98	707100.97	Pbhl

Targets

Name	Description Dip.	Dir.	TVD ft	+N/-S ft	+E/-W ft	Map Northing ft	Map Easting ft	<--- Latitude ---> Deg Min Sec			<--- Longitude ---> Deg Min Sec		
Pbhl			8650.00	4813.56	19.52	482522.98	707100.97	32	19	31.383 N	103	47	48.106 W

Casing Points

MD	TVD	Diameter	Hole Size	Name



Weatherford International Ltd.

WFT Plan Report - X & Y's



Company:	Devon Energy	Date:	4/5/2010	Time:	08:57.15	Page:	3
Field:	Eddy Co., NM (NAD 83)	Co-ordinate(NE) Reference:	Well: NPG 8 Fed #14H, Grid North				
Site:	North Pure Gold 8 Federal #14H	Vertical (TVD) Reference:	SITE 3350.0				
Well:	NPG 8 Fed #14H	Section (VS) Reference:	Well (0.00N,0.00E,0.23Azi)				
Wellpath:	1	Survey Calculation Method:	Minimum Curvature				Db: Sybase

Annotation

MD ft	TVD ft	
8077.04	8077.04	Kop
8977.04	8650.00	Lp
13217.68	8650.00	Pbhl

Formations

MD	TVD	Formations	Lithology	Dip Angle	Dip Direction

**Weatherford®****Weatherford Drilling Services**

GeoDec v5.03

Report Date: April 05, 2010
Job Number: _____
Customer: Devon Energy
Well Name: North Pure Gold 8 FED #14H
API Number: _____
Rig Name: _____
Location: Eddy Co., NM
Block: _____
Engineer: R joyner

US State Plane 1983	Geodetic Latitude / Longitude
System: New Mexico Eastern Zone	System: Latitude / Longitude
Projection: Transverse Mercator/Gauss Kruger	Projection: Geodetic Latitude and Longitude
Datum: North American Datum 1983	Datum: North American Datum 1983
Ellipsoid: GRS 1980	Ellipsoid: GRS 1980
North/South 477709.430 USFT	Latitude 32.3121558 DEG
East/West 707081.450 USFT	Longitude -103.7968326 DEG
Grid Convergence: .29°	
Total Correction: +7.52°	

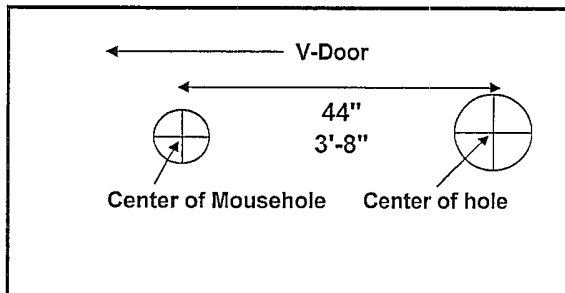
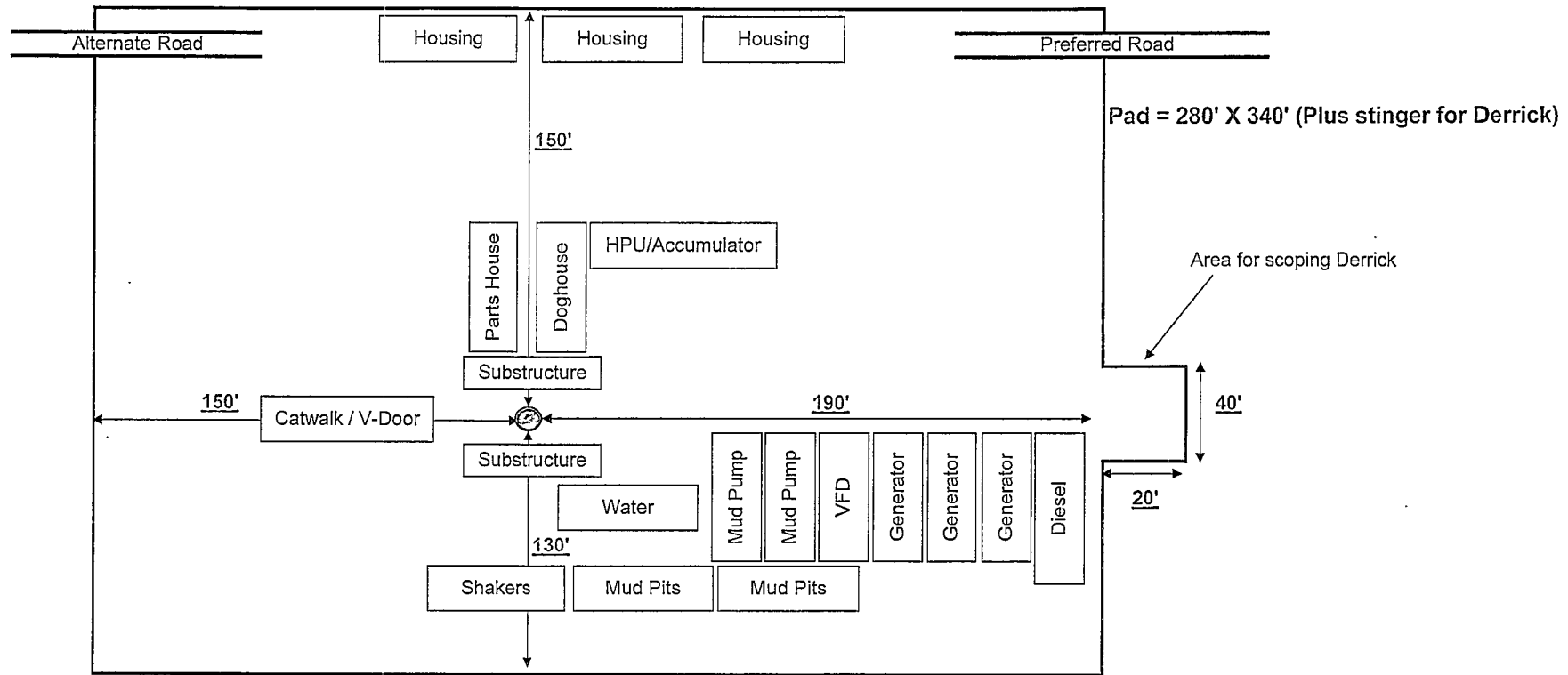
Geodetic Location WGS84	Elevation =	0.0 Meters
Latitude =	32.31216° N	32° 18 min 43.761 sec
Longitude =	103.79683° W	103° 47 min 48.597 sec

Magnetic Declination =	7.81°	[True North Offset]
Local Gravity =	.9988 g	Checksum = 6589
Local Field Strength =	48754 nT	Magnetic Vector X = 23967 nT
Magnetic Dip =	60.25°	Magnetic Vector Y = 3285 nT
Magnetic Model =	IGRF-2010g11	Magnetic Vector Z = 42329 nT
Spud Date =	Jul 30, 2010	Magnetic Vector H = 24192 nT

Signed: _____

Date: _____

H&P 214 & 232 Location Dimensions



Notes for Rotating Mouse hole for a FlexRig3 & 25' Substructure:

- 1) 70' of mouse hole below ground level
- 2) If conductor pipe is less than 85' below ground level, recommend cement mouse hole in place in order to prevent break thru & circulation / washout thru mouse hole.
- 3) Use 12" (mini. Nominal size) pipe. This can be spiral weld or low pressure pipe, 10 3/4" is used in some applications but due to inaccuracies in location of mouse hole & potential out of alignment or centered in hole, 12" pipe recommended.
- 4) Cement mouse hole in 13 1/2" or 14 3/4" hole.
- 5) Cellar will need to be oblong in order to accommodate mouse hole (I.e. 5' x 10', 6' x 10',)
.... Operator decision


**PHOENIX RUBBER
INDUSTRIAL LTD.**
QUALITY DOCUMENT

H-6728 Szeged, Budapesti út 10. Hungary • H-6701 Szeged, P. O. Box 152
Phone: (3662) 566-737 • Fax (3662) 566-738

SALES & MARKETING: H-1092 Budapest, Ráday u. 42-44. Hungary • H-1440 Budapest, P. O. Box 26
Phone: (361) 456-4200 • Fax: (361) 217-2972, 456-4273 • www.laurussmargo.hu

QUALITY CONTROL INSPECTION AND TEST CERTIFICATE		CERT. N°: 555	
PURCHASER: Phoenix Beattie Co.		P.O. N°: 1519FA-871	
PHOENIX RUBBER order N°: 170466	HOSE TYPE: 3" ID Choke and Kill Hose		
HOSE SERIAL N°: 34137	NOMINAL / ACTUAL LENGTH: 11,43 m		
W.P. 68,96 MPa 10000 psi	T.P. 103,4 MPa 15000 psi	Duration: 60 min.	
Pressure test with water at ambient temperature <p style="text-align: center;">See attachment. (1 page)</p>			
↑ 10 mm = 10 Min. → 10 mm = 16 MPa			
COUPLINGS			
Type	Serial N°	Quality	Heat N°
3" coupling with	714 715	AISI 4130	C7626
4 1/16" Flange end		AISI 4130	47357
API Spec 16 C Temperature rate: "B"			
All metal parts are flawless			
WE CERTIFY THAT THE ABOVE HOSE HAS BEEN MANUFACTURED IN ACCORDANCE WITH THE TERMS OF THE ORDER AND PRESSURE TESTED AS ABOVE WITH SATISFACTORY RESULT.			
Date: 30. April. 2002.	Inspector	Quality Control PHOENIX RUBBER Industrial Ltd. Hose Inspection and Pressure Testing Department	

NOTES REGARDING BLOWOUT PREVENTERS

Devon Energy Production Company, LP

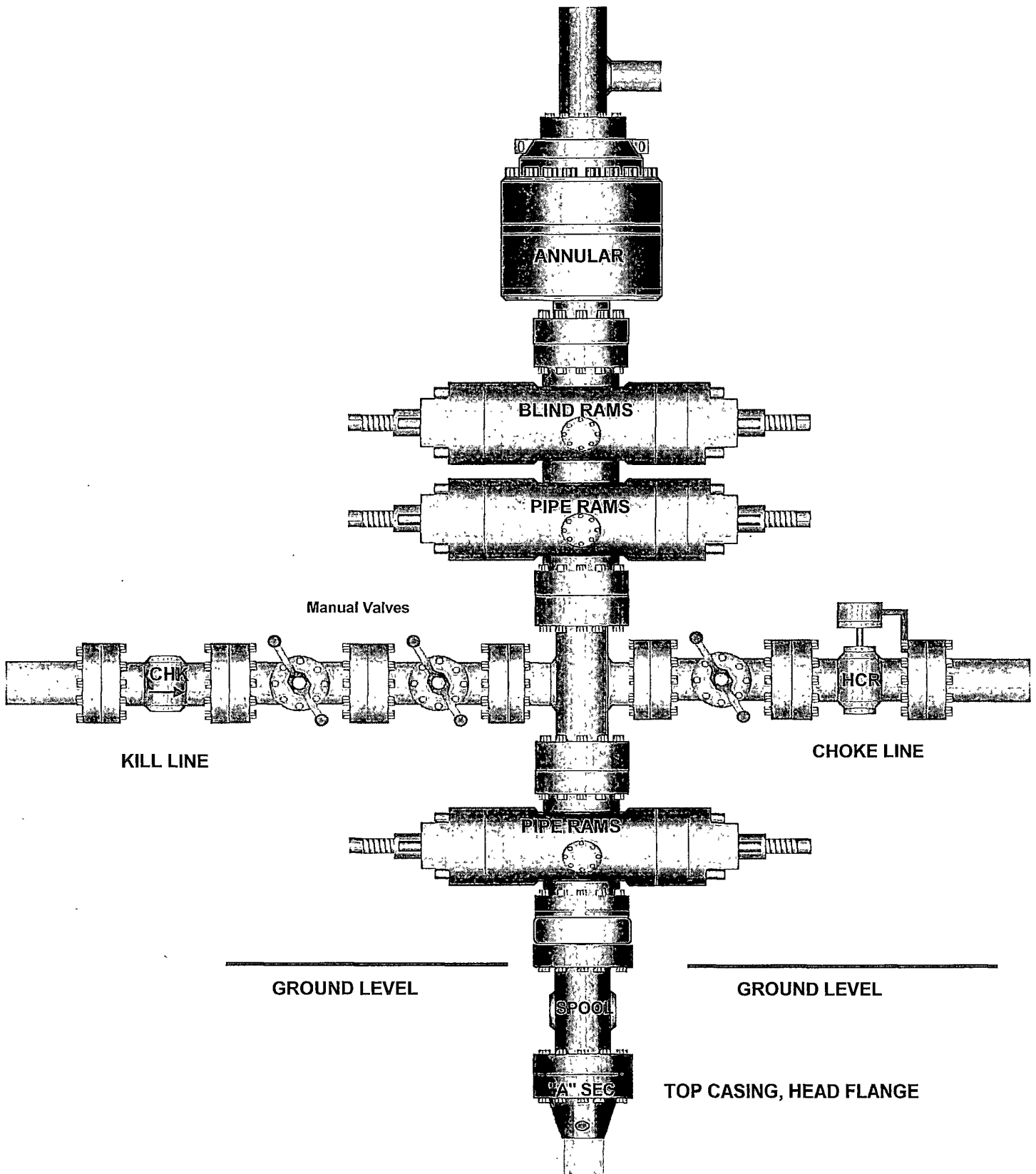
North Pure Gold 8 Federal 14

Surface Location: 150 FSL & 1700 FEL, Unit O, Sec 8 T23S R31E, Eddy, NM

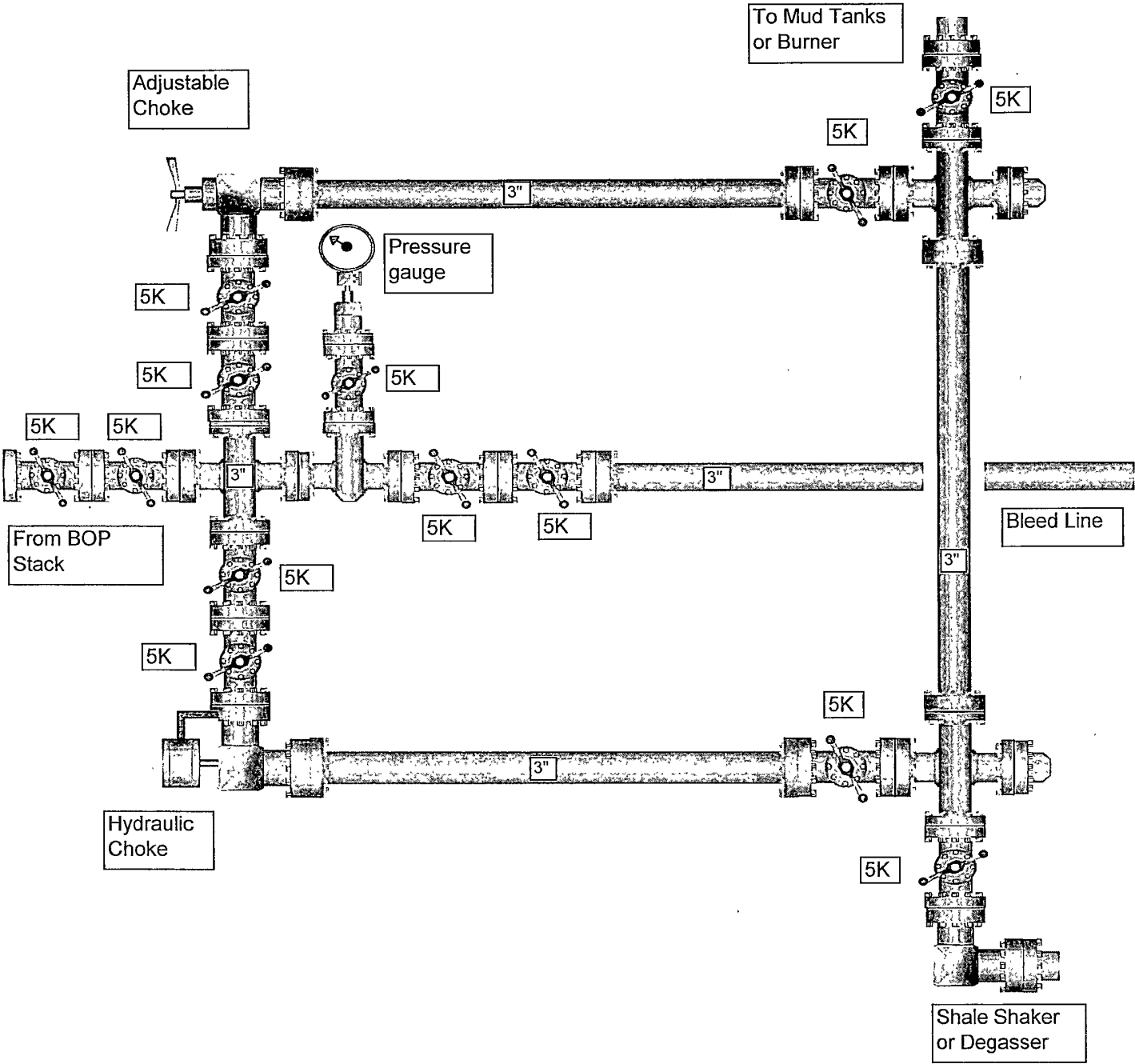
Bottom hole Location: 330 FNL & 1650 FEL, Unit B, Sec 8 T23S R31E, Eddy, NM

1. Drilling nipple will be constructed so it can be removed mechanically without the aid of a welder. The minimum internal diameter will equal BOP bore.
2. Wear ring will be properly installed in head.
3. Blowout preventer and all associated fittings will be in operable condition to withstand a minimum 5000 psi working pressure.
4. All fittings will be flanged.
5. A full bore safety valve tested to a minimum 5000 psi WP with proper thread connections will be available on the rotary rig floor at all times.
6. All choke lines will be anchored to prevent movement.
7. All BOP equipment will be equal to or larger in bore than the internal diameter of the last casing string.
8. Will maintain a kelly cock attached to the kelly.
9. Hand wheels and wrenches will be properly installed and tested for safe operation.
10. Hydraulic floor control for blowout preventer will be located as near in proximity to driller's controls as possible.
11. All BOP equipment will meet API standards and include a minimum 40 gallon accumulator having two independent means of power to initiate closing operation.

13-5/8" x 5,000 psi BOP Stack



5,000 PSI CHOKE MANIFOLD



SURFACE USE PLAN

Devon Energy Production Company, LP

North Pure Gold 8 Federal 14H

Surface Location: 150 FSL & 1700 FEL, Unit O, Sec 8 T23S R31E, Eddy, NM

Bottom hole Location: 330 FNL & 1650 FEL, Unit B, Sec 8 T23S R31E, Eddy, NM

1. Existing Roads:

- a. The well site and elevation plat for the proposed well are reflected on the well site layout; Form C-102. The well was staked by Basin Surveys.
- b. All roads into the location are depicted on Exhibit 3.
- c. Directions to Location: From the junction of Hwy 128 and Twin Wells go east on Twin Wells 0.1 miles to lease road, on lease road go north 1.2 miles to lease road, on lease road go west 220' to proposed road.

2. New or Reconstructed Access Roads:

- a. The well site layout, Form C-102 shows the existing County road. Approximately 344.5' of new access road will be constructed as follows.
- b. The maximum width of the road will be 14'. It will be crowned and made of 6" rolled and compacted caliche. Water will be deflected, as necessary, to avoid accumulation and prevent surface erosion.
- c. Surface material will be native caliche. This material will be obtained from a BLM approved pit nearest in proximity to the location. The average grade will be approximately 1%.
- d. No cattle guards, grates or fence cuts will be required. No turnouts are planned

3. Location of Existing Wells:

One Mile Radius Plat shows all existing and proposed wells within a one-mile radius of the proposed location. See attached plat.

4. Location of Existing and/or Proposed Production Facilities:

- a. In the event the well is found productive, the North Pure Gold 9 Federal 1 tank battery would be utilized and the necessary production equipment will be installed at the well site.
- b. If the well is productive, rehabilitation plans are as follows:
 - i. The original topsoil from the well site will be returned to the location. The drill site will then be contoured as close as possible to the original state.

5. Location and Types of Water Supply:

This location will be drilled using a combination of water mud systems (outlined in the Drilling Program). The water will be obtained from commercial water stations in the area and hauled to location by transport truck using the existing and proposed roads shown in the C-102. On occasion, water will be obtained from a pre-existing water well, running a pump directly to the drill rig. In these cases where a poly pipeline is used to transport water for drilling purposes, proper authorizations will be secured. If a poly pipeline is used, the size, distance, and map showing route will be provided to the BLM via sundry notice.

6. Construction Materials:

The caliche utilized for the drilling pad and proposed access road will be from minerals that are located onsite or will be used onsite. If minerals are not available onsite, then an established mineral pit will be used to build the location and stem road.

7. Methods of Handling Waste Material:

- a. Drill cuttings will be disposed.
- b. All trash, junk and other waste material will be contained in trash cages or trash bins to prevent scattering. When the job is completed all contents will be removed and disposed of in an approved sanitary landfill.
- c. The supplier, including broken sacks, will pick up salts remaining after completion of well.
- d. A Porto-john will be provided for the rig crews. This equipment will be properly maintained during the drilling and completion operations and will be removed when all operations are complete.
- e. Remaining drilling fluids will be sent to a closed loop system. Water produced during completion will be put into a closed loop system. Oil and condensate produced will be put into a storage tank and sold.
- f. Disposal of fluids to be transported by the following companies:
 - i. American Production Service Inc, Odessa TX
 - ii. Gandy Corporation, Lovington NM
 - iii. I & W Inc, Loco Hill NM
 - iv. Jims Water Service of Co Inc, Denver CO

8. Ancillary Facilities: No campsite or other facilities will be constructed as a result of this well.

9. Well Site Layout

- a. Exhibit D shows the proposed well site layout with dimensions of the pad layout.
- b. This exhibit indicated proposed location of sump pits and living facilities.
- c. A closed loop system will be utilized.
- d. If a pit or closed loop system is utilized, Devon will comply with the NMOCD requirements 19.15.17 and submit form C-144 to the appropriate NMOCD District Office. A copy to be provided to the BLM.

10. Plans for Surface Reclamation Include Both Final & Interim:

- a. After concluding the drilling and/or completion operations, if the well is found non-commercial, the caliche will be removed from the pad and transported to the original caliche pit or used for other drilling locations. The road will be reclaimed as directed by the BLM. The original top soil will again be returned to the pad and contoured, as close as possible, to the original topography.
- b. The location and road will be rehabilitated as recommended by the BLM.
- c. If the well is deemed commercially productive, caliche from areas of the pad site not required for operations will be reclaimed. The original top soil will be returned to the area of the drill pad not necessary to operate the well. These unused areas of the drill pad will be contoured, as close as possible, to match the original topography.
- d. All disturbed areas not needed for active support of production operations will undergo interim reclamation. The portions of the cleared well site not needed for operational and safety purposes will be recontoured to a final or intermediate contour that blends with the surrounding

topography as much as possible. Topsoil will be respread over areas not needed for all-weather operations.

11. Surface Ownership

- a. The surface is owned by the US Government and is administered by the Bureau of Land Management. The surface is multiple use with the primary uses of the region for the grazing of livestock and the production of oil and gas.
- b. The proposed road routes and the surface location will be restored as directed by the BLM.

12. Other Information:

- a. The area surrounding the well site is grassland. The topsoil is very sandy in nature. The vegetation is moderately sparse with native prairie grass, sage bush, yucca and miscellaneous weeds. No wildlife was observed but it is likely that deer, rabbits, coyotes, and rodents traverse the area.
- b. There is no permanent or live water in the general proximity of the location.
- c. There is one dwelling within 2 miles of location.
- d. A Cultural Resources Examination was completed by the Permian Basin Cultural Resource Mitigation Fund and submitted to the BLM office in Carlsbad, New Mexico.

13. Bond Coverage:

Bond Coverage is Nationwide; Bond # is CO-1104

Operators Representative:

The Devon Energy Production Company, L.P. representatives responsible for ensuring compliance of the surface use plan are listed below.

Jim Cromer - Operations Engineer Advisor
Devon Energy Production Company, L.P.
20 North Broadway, Suite 1500
Oklahoma City, OK 73102-8260
(405) 228-4464 (office)
(405) 694-7718 (Cellular)

Don Mayberry - Superintendent
Devon Energy Production Company, L.P.
Post Office Box 250
Artesia, NM 88211-0250
(575) 748-3371 (office)
(575) 746-4945 (home)

Certification

I hereby certify that I, or persons under my direct supervision, have inspected the proposed drill site and access road proposed herein; that I am familiar with the conditions that presently exist; that I have full knowledge of State and Federal laws applicable to this operation; that the statements made in this APD package are, to the best of my knowledge, true and correct; and that the work associated with the operations proposed herein will be performed in conformity with this APD package and the terms and conditions under which it is approved. I also certify that I, or Devon Energy Production Company, L.P. am responsible for the operations conducted under this application. These statements are subject to the provisions of 18 U.S.C. 1001 for the filing of false statements.

I hereby also certify that I, or Devon Energy Production Company, L.P. have made a good faith effort to provide the surface owner with a copy of the Surface Use Plan of Operations and any Conditions of Approval that are attached to the APD.

Executed this 16th ___ day of ___ April, 2010.

Printed Name: Judy A. Barnett

Signed Name: 

Position Title: Regulatory Analyst

Address: 20 North Broadway, OKC OK 73102

Telephone: (405)-228-8699

Field Representative (if not above signatory):

Address (if different from above):

Telephone (if different from above):

PECOS DISTRICT CONDITIONS OF APPROVAL

OPERATOR'S NAME:	DEVON ENERGY PRODUCTION COMPANY, L.P.
LEASE NO.:	NM77046
WELL NAME & NO.:	NORTH PURE GOLD 8 FEDERAL # 14H
SURFACE HOLE FOOTAGE:	0150' FSL & 1700' FEL
BOTTOM HOLE FOOTAGE:	0330' FNL & 1650' FEL
LOCATION:	Section 8, T. 23 S., R 31 E., NMPM
COUNTY:	Eddy County, New Mexico

TABLE OF CONTENTS

Standard Conditions of Approval (COA) apply to this APD. If any deviations to these standards exist or special COAs are required, the section with the deviation or requirement will be checked below.

- ☐ **General Provisions**
- ☐ **Permit Expiration**
- ☐ **Archaeology, Paleontology, and Historical Sites**
- ☐ **Noxious Weeds**
- ☒ **Special Requirements**
 - Lesser Prairie-Chicken Timing Stipulations
 - Ground-level Abandoned Well Marker
- ☐ **Construction**
 - Notification
 - V-Door Direction – Not Stipulated
 - Topsoil
 - Closed Loop System
 - Federal Mineral Material Pits
 - Well Pads
 - Roads
- ☐ **Road Section Diagram**
- ☒ **Drilling**
 - H2S Requirements-Onshore Order #6
 - Secretary's Potash
 - Logging Requirements
- ☒ **Production (Post Drilling)**
 - Well Structures & Facilities
 - Pipelines
 - Electric Lines
- ☐ **Interim Reclamation**
- ☐ **Final Abandonment & Reclamation**

I. GENERAL PROVISIONS

The approval of the Application For Permit To Drill (APD) is in compliance with all applicable laws and regulations: 43 Code of Federal Regulations 3160, the lease terms, Onshore Oil and Gas Orders, Notices To Lessees, New Mexico Oil Conservation Division (NMOCD) Rules, National Historical Preservation Act As Amended, and instructions and orders of the Authorized Officer. Any request for a variance shall be submitted to the Authorized Officer on Form 3160-5, Sundry Notices and Report on Wells.

II. PERMIT EXPIRATION

If the permit terminates prior to drilling and drilling cannot be commenced within 60 days after expiration, an operator is required to submit Form 3160-5, Sundry Notices and Reports on Wells, requesting surface reclamation requirements for any surface disturbance. However, if the operator will be able to initiate drilling within 60 days after the expiration of the permit, the operator must have set the conductor pipe in order to allow for an extension of 60 days beyond the expiration date of the APD. (Filing of a Sundry Notice is required for this 60 day extension.)

III. ARCHAEOLOGICAL, PALEONTOLOGY & HISTORICAL SITES

Any cultural and/or paleontological resource discovered by the operator or by any person working on the operator's behalf shall immediately report such findings to the Authorized Officer. The operator is fully accountable for the actions of their contractors and subcontractors. The operator shall suspend all operations in the immediate area of such discovery until written authorization to proceed is issued by the Authorized Officer. An evaluation of the discovery shall be made by the Authorized Officer to determine the appropriate actions that shall be required to prevent the loss of significant cultural or scientific values of the discovery. The operator shall be held responsible for the cost of the proper mitigation measures that the Authorized Officer assesses after consultation with the operator on the evaluation and decisions of the discovery. Any unauthorized collection or disturbance of cultural or paleontological resources may result in a shutdown order by the Authorized Officer.

IV. NOXIOUS WEEDS

The operator shall be held responsible if noxious weeds become established within the areas of operations. Weed control shall be required on the disturbed land where noxious weeds exist, which includes the roads, pads, associated pipeline corridor, and adjacent land affected by the establishment of weeds due to this action. The operator shall consult with the Authorized Officer for acceptable weed control methods, which include following EPA and BLM requirements and policies.

V. SPECIAL REQUIREMENT(S)

Timing Limitation Stipulation / Condition of Approval for lesser prairie-chicken: Oil and gas activities including 3-D geophysical exploration, and drilling will not be allowed in lesser prairie-chicken habitat during the period from March 1st through June 15th annually. During that period, other activities that produce noise or involve human activity, such as the maintenance of oil and gas facilities, pipeline, road, and well pad construction, will be allowed except between 3:00 am and 9:00 am. The 3:00 am to 9:00 am restriction will not apply to normal, around-the-clock operations, such as venting, flaring, or pumping, which do not require a human presence during this period. Additionally, no new drilling will be allowed within up to 200 meters of leks known at the time of permitting. Normal vehicle use on existing roads will not be restricted. Exhaust noise from pump jack engines must be muffled or otherwise controlled so as not to exceed 75 db measured at 30 feet from the source of the noise.

Ground-level Abandoned Well Marker to avoid raptor perching: Upon the plugging and subsequent abandonment of the well, the well marker will be installed at ground level on a plate containing the pertinent information for the plugged well. For more installation details, contact the Carlsbad Field Office at 575-234-5972.

Porto-johns and trash containers will be on-location during fracturing operations or any other crew-intensive operations.

VI. CONSTRUCTION

A. NOTIFICATION

The BLM shall administer compliance and monitor construction of the access road and well pad. Notify the Carlsbad Field Office at (575) 234-5972 at least 3 working days prior to commencing construction of the access road and/or well pad.

When construction operations are being conducted on this well, the operator shall have the approved APD and Conditions of Approval (COA) on the well site and they shall be made available upon request by the Authorized Officer.

B. V-DOOR DIRECTION: Not Stipulated

C. TOPSOIL

The operator shall stockpile the topsoil in a low profile manner in order to prevent wind/water erosion of the topsoil. The topsoil to be stripped is approximately 12 inches in depth. The topsoil will be used for interim and final reclamation.

Operator shall separate top-soil from any other materials placed on location as a result of "flipping" surface materials to expose and/or extract caliche from underneath the well-pad location.

D. CLOSED LOOP SYSTEM

Tanks are required for drilling operations: No Pits.

The operator shall properly dispose of drilling contents at an authorized disposal site.

E. FEDERAL MINERAL MATERIALS PIT

Payment shall be made to the BLM prior to removal of any federal mineral materials. Call the Carlsbad Field Office at (575) 234-5972.

F. WELL PAD SURFACING

Surfacing of the well pad is not required.

If the operator elects to surface the well pad, the surfacing material may be required to be removed at the time of reclamation.

The well pad shall be constructed in a manner which creates the smallest possible surface disturbance, consistent with safety and operational needs.

G. ON LEASE ACCESS ROADS

Road Width

The access road shall have a driving surface that creates the smallest possible surface disturbance and does not exceed fourteen (14) feet in width. The maximum width of surface disturbance, when constructing the access road, shall not exceed thirty (30) feet.

Surfacing

Surfacing material is not required on the new access road driving surface. If the operator elects to surface the new access road or pad, the surfacing material may be required to be removed at the time of reclamation.

Where possible, no improvements should be made on the unsurfaced access road other than to remove vegetation as necessary, road irregularities, safety issues, or to fill low areas that may sustain standing water.

The Authorized Officer reserves the right to require surfacing of any portion of the access road at any time deemed necessary. Surfacing may be required in the event the road deteriorates, erodes, road traffic increases, or it is determined to be beneficial for future field development. The surfacing depth and type of material will be determined at the time of notification.

Crowning

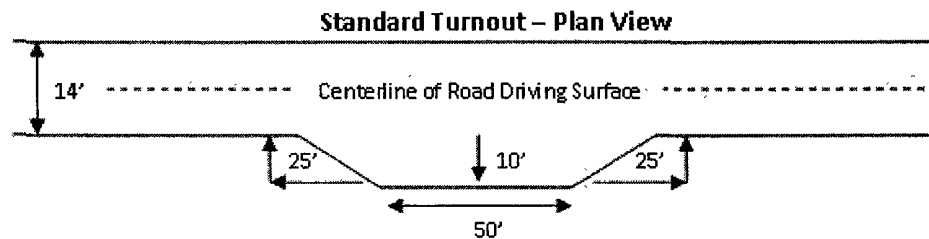
Crowning shall be done on the access road driving surface. The road crown shall have a grade of approximately 2% (i.e., a 1" crown on a 14' wide road). The road shall conform to Figure 1; cross section and plans for typical road construction.

Ditching

Ditching shall be required on both sides of the road.

Turnouts

Vehicle turnouts shall be constructed on the road. Turnouts shall be intervisible with interval spacing distance less than 1000 feet. Turnouts shall be constructed on all blind curves. Turnouts shall conform to the following diagram:

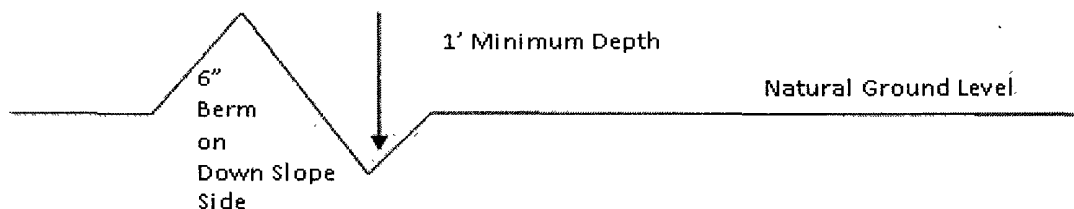


Drainage

Drainage control systems shall be constructed on the entire length of road (e.g. ditches, sidehill outsloping and insloping, lead-off ditches, culvert installation, and low water crossings).

A typical lead-off ditch has a minimum depth of 1 foot below and a berm of 6 inches above natural ground level. The berm shall be on the down-slope side of the lead-off ditch.

Cross Section of a Typical Lead-off Ditch



All lead-off ditches shall be graded to drain water with a 1 percent minimum to 3 percent maximum ditch slope. The spacing interval are variable for lead-off ditches and shall be determined according to the formula for spacing intervals of lead-off ditches, but may be amended depending upon existing soil types and centerline road slope (in %);

Formula for Spacing Interval of Lead-off Ditches

Example - On a 4% road slope that is 400 feet long, the water flow shall drain water into a lead-off ditch. Spacing interval shall be determined by the following formula:

$$400 \text{ foot road with } 4\% \text{ road slope: } \frac{400'}{4\%} + 100' = 200' \text{ lead-off ditch interval}$$

Culvert Installations

Appropriately sized culvert(s) shall be installed at the deep waterway channel flow crossing.

Cattleguards

An appropriately sized cattleguard(s) sufficient to carry out the project shall be installed and maintained at fence crossing(s).

Any existing cattleguard(s) on the access road shall be repaired or replaced if they are damaged or have deteriorated beyond practical use. The operator shall be responsible for the condition of the existing cattleguard(s) that are in place and are utilized during lease operations.

A gate shall be constructed and fastened securely to H-braces.

Fence Requirement

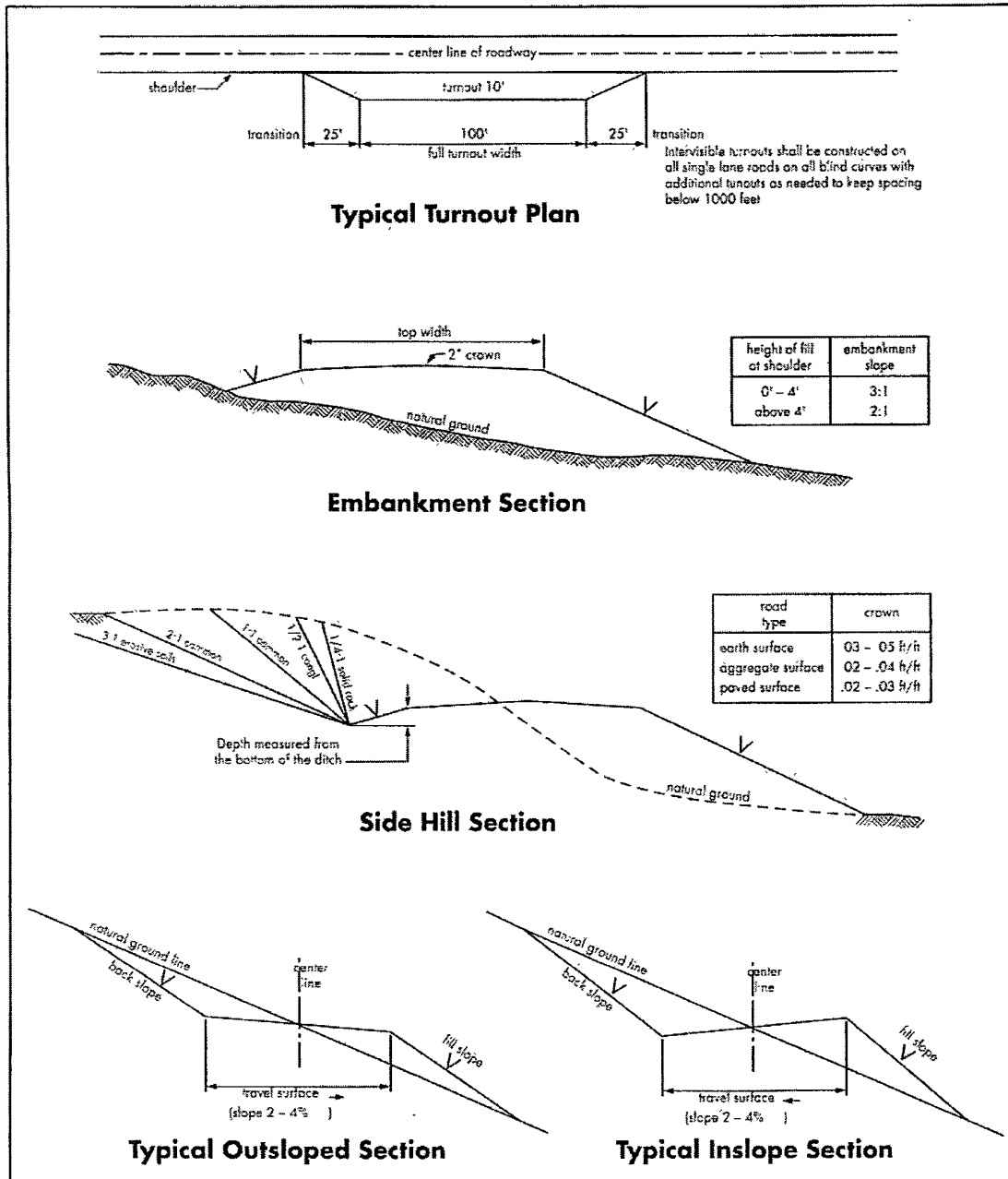
Where entry is required across a fence line, the fence shall be braced and tied off on both sides of the passageway prior to cutting.

The operator shall notify the private surface landowner or the grazing allotment holder prior to crossing any fence(s).

Public Access

Public access on this road shall not be restricted by the operator without specific written approval granted by the Authorized Officer.

Figure 1 – Cross Sections and Plans For Typical Road Sections



VII. DRILLING

A. DRILLING OPERATIONS REQUIREMENTS

The BLM is to be notified a minimum of 4 hours in advance for a representative to witness:

- a. Spudding well
- b. Setting and/or Cementing of all casing strings
- c. BOPE tests

☒ **Eddy County**

Call the Carlsbad Field Office, 620 East Greene St., Carlsbad, NM 88220,
(575) 361-2822

1. **Due to recent H2S encounters in the salt formation, it is recommended that monitoring equipment be onsite for potential Hydrogen Sulfide prior to drilling out the surface shoe. If Hydrogen Sulfide is encountered, please report measurements and formations to the BLM.**
2. Unless the production casing has been run and cemented or the well has been properly plugged, the drilling rig shall not be removed from over the hole without prior approval.
3. Floor controls are required for 3M or Greater systems. These controls will be on the rig floor, unobstructed, readily accessible to the driller and will be operational at all times during drilling and/or completion activities. Rig floor is defined as the area immediately around the rotary table; the area immediately above the substructure on which the draw works are located, this does not include the dog house or stairway area.
4. **The record of the drilling rate along with the CAL/GR/N well log run from TD to surface will be submitted to the BLM office as well as all other logs run on the borehole 30 days from completion. If available, a digital copy of the logs is to be submitted in addition to the paper copies. The Rustler top and top and bottom of Salt are to be recorded on the Completion Report.**

B. CASING

Changes to the approved APD casing and cement program require submitting a sundry and receiving approval prior to work. Failure to obtain approval prior to work will result in an Incident of Non-Compliance being issued.

Centralizers required on surface casing per Onshore Order 2.III.B.1.f.

Wait on cement (WOC) time for a primary cement job will be a minimum 18 hours for a water basin, 24 hours in the potash area, or 500 pounds compressive strength, whichever is greater for all casing strings. Provide compressive strengths including hours to reach required 500 pounds compressive strength prior to cementing each casing string. See individual casing strings for details regarding lead cement slurry requirements.

No pea gravel permitted for remedial or fall back remedial without prior authorization from the BLM engineer.

Secretary's Potash

Possible brine and water flows in the Salado, Castile, Delaware and Bone Spring.

Possible lost circulation in the Delaware and Bone Spring Groups.

1. The 13-3/8 inch surface casing shall be set at **approximately 425 feet (a minimum of 25 feet into the Rustler Anhydrite and above the salt)** and cemented to the surface.
 - a. If cement does not circulate to the surface, the appropriate BLM office shall be notified and a temperature survey utilizing an electronic type temperature survey with surface log readout will be used or a cement bond log shall be run to verify the top of the cement. Temperature survey will be run a minimum of six hours after pumping cement and ideally between 8-10 hours after completing the cement job.
 - b. **Wait on cement (WOC) time for a primary cement job is to include the lead cement slurry.**
 - c. Wait on cement (WOC) time for a remedial job will be a minimum of 4 hours after bringing cement to surface or 500 pounds compressive strength, whichever is greater.
 - d. If cement falls back, remedial cementing will be done prior to drilling out that string.
2. The minimum required fill of cement behind the 9-5/8 inch intermediate casing is:
 - ☒ Cement to surface. If cement does not circulate see B.1.a, c-d above.
Wait on cement (WOC) time for a primary cement job is to include the lead cement slurry due to potash. Set intermediate casing in the Lamar Limestone.

Formation below the 9-5/8" shoe to be tested according to Onshore Order 2.III.B.1.i. Test to be done as a mud equivalency test using the mud weight necessary for the pore pressure of the formation below the shoe (not the mud weight required to prevent dissolving the salt formation) and the mud weight for the bottom of the hole. Report results to BLM office.

Centralizers required on horizontal leg, must be type for horizontal service and minimum of one every other joint.

3. The minimum required fill of cement behind the 5-1/2 inch production casing is:
 - a. First stage to DV tool, cement shall:
 - ☒ Cement to circulate. If cement does not circulate, contact the appropriate BLM office before proceeding with second stage cement job.
 - b. Second stage above DV tool, cement shall:
 - ☒ Cement to circulate. If cement does not circulate, contact the appropriate BLM office before proceeding with Third stage cement job.
 - c. Third stage above DV tool, cement shall:
 - ☒ Cement to surface. If cement does not circulate, contact the appropriate BLM office. **Additional cement may be required as the excess cement calculates to be 23%.**
4. If hardband drill pipe is rotated inside casing, returns will be monitored for metal. If metal is found in samples, drill pipe will be pulled and rubber protectors which have a larger diameter than the tool joints of the drill pipe will be installed prior to continuing drilling operations.

C. PRESSURE CONTROL

1. All blowout preventer (BOP) and related equipment (BOPE) shall comply with well control requirements as described in Onshore Oil and Gas Order No. 2 and API RP 53 Sec. 17.
2. **Variance approved to use flex line with serial number 34137 from BOP to choke manifold. Check condition of 3" flexible line from BOP to choke manifold, replace if exterior is damaged or if line fails test. Line to be as straight as possible with no hard bends and is to be anchored according to Manufacturer's requirements. Anchor requirements to be onsite for review.**

3. Minimum working pressure of the blowout preventer (BOP) and related equipment (BOPE) required for drilling below the surface casing shoe shall be **3000 (3M) psi. Operator installing a 5M system and testing as a 3M.**
 - a. **For surface casing only:** If the BOP/BOPE is to be tested against casing, the wait on cement (WOC) time for that casing is to be met (see WOC statement at start of casing section). Independent service company required.
4. Minimum working pressure of the blowout preventer (BOP) and related equipment (BOPE) required for drilling below the **9-5/8** intermediate casing shoe shall be **5000 (5M) psi. 5M system requires an HCR valve, remote kill line and annular to match. The remote kill line is to be installed prior to testing the system and tested to stack pressure.**
5. The appropriate BLM office shall be notified a minimum of 4 hours in advance for a representative to witness the tests.
 - a. Casing cut-off and BOP installation will not be initiated until the cement has had a minimum of 8 hours setup time for a water basin. The casing shall remain stationary and under pressure for at least eight hours after the operator places the cement. In the potash area, the minimum time is 12 hours and the casing shall remain stationary and under pressure during this time period. Casing shall be under pressure if the operator uses some acceptable means of holding pressure or if the operator employs one or more float valves to hold the cement in place. Testing the BOP/BOPE against a plug can commence after meeting the above conditions plus the BOP installation time.
 - b. The tests shall be done by an independent service company utilizing a test plug.
 - c. The results of the test shall be reported to the appropriate BLM office.
 - d. All tests are required to be recorded on a calibrated test chart. **A copy of the BOP/BOPE test chart and a copy of independent service company test will be submitted to the appropriate BLM office.**
 - e. The BOP/BOPE test shall include a low pressure test from 250 to 300 psi. The test will be held for a minimum of 10 minutes if test is done with a test plug and 30 minutes without a test plug.

D. DRILL STEM TEST

If drill stem tests are performed, Onshore Order 2.III.D shall be followed.

CRW 051910

VIII. PRODUCTION (POST DRILLING)

A. WELL STRUCTURES & FACILITIES

Placement of Production Facilities

Production facilities should be placed on the well pad to allow for maximum interim recontouring and revegetation of the well location.

Containment Structures

The containment structure shall be constructed to hold the capacity of the entire contents of the largest tank, plus 24 hour production, unless more stringent protective requirements are deemed necessary by the Authorized Officer.

Painting Requirement

All above-ground structures including meter housing that are not subject to safety requirements shall be painted a flat non-reflective paint color
Shale Green, Munsell Soil Color Chart # 5Y 4/2

B. PIPELINES – Not requested in APD

C. ELECTRIC LINES – Not requested in APD

IX. INTERIM RECLAMATION

During the life of the development, all disturbed areas not needed for active support of production operations should undergo interim reclamation in order to minimize the environmental impacts of development on other resources and uses.

Within six (6) months of well completion, operators should work with BLM surface management specialists (Jim Amos: 575-234-5909) to devise the best strategies to reduce the size of the location. Interim reclamation should allow for remedial well operations, as well as safe and efficient removal of oil and gas.

During reclamation, the removal of caliche is important to increasing the success of revegetating the site. Removed caliche that is free of contaminants may be used for road repairs, fire walls or for building other roads and locations. In order to operate the well or complete workover operations, it may be necessary to drive, park and operate on restored interim vegetation within the previously disturbed area. Disturbing revegetated areas for production or workover operations will be allowed. If there is significant disturbance and loss of vegetation, the area will need to be revegetated. Communicate with the appropriate BLM office for any exceptions/exemptions if needed.

All disturbed areas after they have been satisfactorily prepared need to be reseeded with the seed mixture provided below.

Upon completion of interim reclamation, the operator shall submit a Sundry Notices and Reports on Wells, Subsequent Report of Reclamation (Form 3160-5).

X. FINAL ABANDONMENT & RECLAMATION

At final abandonment, well locations, production facilities, and access roads must undergo "final" reclamation so that the character and productivity of the land are restored.

Earthwork for final reclamation must be completed within six (6) months of well plugging. All pads, pits, facility locations and roads must be reclaimed to a satisfactory revegetated, safe, and stable condition, unless an agreement is made with the landowner or BLM to keep the road and/or pad intact.

After all disturbed areas have been satisfactorily prepared; these areas need to be revegetated with the seed mixture provided below. Seeding should be accomplished by drilling on the contour whenever practical or by other approved methods. Seeding may need to be repeated until revegetation is successful, as determined by the BLM.

Operators shall contact a BLM surface protection specialist prior to surface abandonment operations for site specific objectives (Jim Amos: 575-234-5909).

Ground-level Abandoned Well Marker to avoid raptor perching: Upon the plugging and subsequent abandonment of the well, the well marker will be installed at ground level on a plate containing the pertinent information for the plugged well.

Seed Mixture for LPC Sand/Shinnery Sites

The holder shall seed all disturbed areas with the seed mixture listed below. The seed mixture shall be planted in the amounts specified in pounds of pure live seed (PLS)* per acre. There shall be no primary or secondary noxious weeds in the seed mixture. Seed will be tested and the viability testing of seed will be done in accordance with State law(s) and within nine (9) months prior to purchase. Commercial seed will be either certified or registered seed. The seed container will be tagged in accordance with State law(s) and available for inspection by the authorized officer.

Seed will be planted using a drill equipped with a depth regulator to ensure proper depth of planting where drilling is possible. The seed mixture will be evenly and uniformly planted over the disturbed area (smaller/heavier seeds have a tendency to drop the bottom of the drill and are planted first). The holder shall take appropriate measures to ensure this does not occur. Where drilling is not possible, seed will be broadcast and the area shall be raked or chained to cover the seed. When broadcasting the seed, the pounds per acre are to be doubled. The seeding will be repeated until a satisfactory stand is established as determined by the authorized officer. Evaluation of growth will not be made before completion of at least one full growing season after seeding.

Species to be planted in pounds of pure live seed* per acre:

<u>Species</u>	<u>lb/acre</u>
Plains Bristlegrass	5lbs/A
Sand Bluestem	5lbs/A
Little Bluestem	3lbs/A
Big Bluestem	6lbs/A
Plains Coreopsis	2lbs/A
Sand Dropseed	1lbs/A

*Pounds of pure live seed:

Pounds of seed x percent purity x percent germination = pounds pure live seed