

District I
1625 N French Dr, Hobbs, NM 88240
District II
1301 W. Grand Avenue, Artesia, NM 88210
District III
1000 Rio Brazos Road, Aztec, NM 87410
District IV
1220 S St Francis Dr, Santa Fe, NM 87505

State of New Mexico
Energy Minerals and Natural Resources
Department
Oil Conservation Division
1220 South St. Francis Dr.
Santa Fe, NM 87505

Form C-144 CLEZ
July 21, 2008

For closed-loop systems that only use above ground steel tanks or haul-off bins and propose to implement waste removal for closure, submit to the appropriate NMOCD District Office

Closed-Loop System Permit or Closure Plan Application

(that only use above ground steel tanks or haul-off bins and propose to implement waste removal for closure)

Type of action: ☒ Permit ☐ Closure

Instructions: Please submit one application (Form C-144 CLEZ) per individual closed-loop system request. For any application request other than for a closed-loop system that only use above ground steel tanks or haul-off bins and propose to implement waste removal for closure, please submit a Form C-144.

Please be advised that approval of this request does not relieve the operator of liability should operations result in pollution of surface water, ground water or the environment. Nor does approval relieve the operator of its responsibility to comply with any other applicable governmental authority's rules, regulations or ordinances.

1
Operator: CHEVRON U.S.A. INC. OGRID #: 4323
Address: 15 SMITH ROAD, MIDLAND, TEXAS 79705
Facility or well name: SKELLY UNIT #945
API Number: 30-015-34327 32964 OCD Permit Number 210489
U/L or Qtr/Qtr: C Section 22 Township 17-S Range 31-E County: EDDY 330' FNL, & 2310' FWL
Center of Proposed Design: Latitude Longitude NAD: ☐ 1927 ☐ 1983
Surface Owner: ☒ Federal ☐ State ☐ Private ☐ Tribal Trust or Indian Allotment

2
☒ **Closed-loop System:** Subsection II of 19.15.17.11 NMAC
Operation: ☐ Drilling a new well ☒ Workover or Drilling (Applies to activities which require prior approval of a permit or notice of intent) ☐ P&A
☐ Above Ground Steel Tanks or ☒ Haul-off Bins

3
Signs: Subsection C of 19.15.17.11 NMAC
☐ 12"x 24", 2" lettering, providing Operator's name, site location, and emergency telephone numbers
☒ Signed in compliance with 19.15.3 103 NMAC

4
Closed-loop Systems Permit Application Attachment Checklist: Subsection B of 19.15.17.9 NMAC
Instructions: Each of the following items must be attached to the application. Please indicate, by a check mark in the box, that the documents are attached.
☒ Design Plan - based upon the appropriate requirements of 19.15.17.11 NMAC
☒ Operating and Maintenance Plan - based upon the appropriate requirements of 19.15.17.12 NMAC
☒ Closure Plan (Please complete Box 5) - based upon the appropriate requirements of Subsection C of 19.15.17.9 NMAC and 19.15.17.13 NMAC
☐ Previously Approved Design (attach copy of design) API Number: _____
☐ Previously Approved Operating and Maintenance Plan API Number: _____

5
Waste Removal Closure For Closed-loop Systems That Utilize Above Ground Steel Tanks or Haul-off Bins Only: (19.15.17.13.D NMAC)
Instructions: Please identify the facility or facilities for the disposal of liquids, drilling fluids and drill cuttings. Use attachment if more than two facilities are required.

Disposal Facility Name: CONTROLLED RECOVERY INC. Disposal Facility Permit Number: R9166-NM-01-0000
Disposal Facility Name: _____ Disposal Facility Permit Number: _____

Will any of the proposed closed-loop system operations and associated activities occur on or in areas that will not be used for future service and operations?
☐ Yes (If yes, please provide the information below) ☒ No

Required for impacted areas which will not be used for future service and operations:

- ☐ Soil Backfill and Cover Design Specifications - based upon the appropriate requirements of Subsection H of 19.15.17.13 NMAC
☐ Re-vegetation Plan - based upon the appropriate requirements of Subsection I of 19.15.17.13 NMAC
☐ Site Reclamation Plan - based upon the appropriate requirements of Subsection G of 19.15.17.13 NMAC

6
Operator Application Certification:

I hereby certify that the information submitted with this application is true, accurate and complete to the best of my knowledge and belief.

Name (Print): DENISE PINKERTON Title: REGULATORY SPECIALIST

Signature: _____ Date: 05-10-2010

e-mail address: laukejd@chevron.com Telephone: 432-687-7375

7 **OCD Approval:** ☒ Permit Application (including closure plan) ☐ Closure Plan (only)

OCD Representative Signature: _____

Approval Date: 06/30/2010

Title: _____

Geologist

OCD Permit Number: _____

210489

8 **Closure Report (required within 60 days of closure completion):** Subsection K of 19.15 17.13 NMAC

Instructions: Operators are required to obtain an approved closure plan prior to implementing any closure activities and submitting the closure report. The closure report is required to be submitted to the division within 60 days of the completion of the closure activities. Please do not complete this section of the form until an approved closure plan has been obtained and the closure activities have been completed.

☐ Closure Completion Date: _____

9 **Closure Report Regarding Waste Removal Closure For Closed-loop Systems That Utilize Above Ground Steel Tanks or Haul-off Bins Only:**

Instructions: Please indentify the facility or facilities for where the liquids, drilling fluids and drill cuttings were disposed. Use attachment if more than two facilities were utilized.

Disposal Facility Name: **CONTROLLED RECOVERY INC.**

Disposal Facility Permit Number: **R9166-NM-01-0000**

Disposal Facility Name: _____

Disposal Facility Permit Number: _____

Were the closed-loop system operations and associated activities performed on or in areas that *will not* be used for future service and operations?

☐ Yes (If yes, please demonstrate compliance to the items below) ☐ No

Required for impacted areas which will not be used for future service and operations

☐ Site Reclamation (Photo Documentation)

☐ Soil Backfilling and Cover Installation

☐ Re-vegetation Application Rates and Seeding Technique

10

Operator Closure Certification:

I hereby certify that the information and attachments submitted with this closure report is true, accurate and complete to the best of my knowledge and belief. I also certify that the closure complies with all applicable closure requirements and conditions specified in the approved closure plan.

Name (Print): _____ Title: _____

Signature: _____ Date: _____

e-mail address: _____ Telephone: _____

Closed Loop Operation & Maintenance Procedure

All drilling fluids are circulated over shakers and through steel work-over tanks.

Fines from shaker are dropped into stand by metal tank.

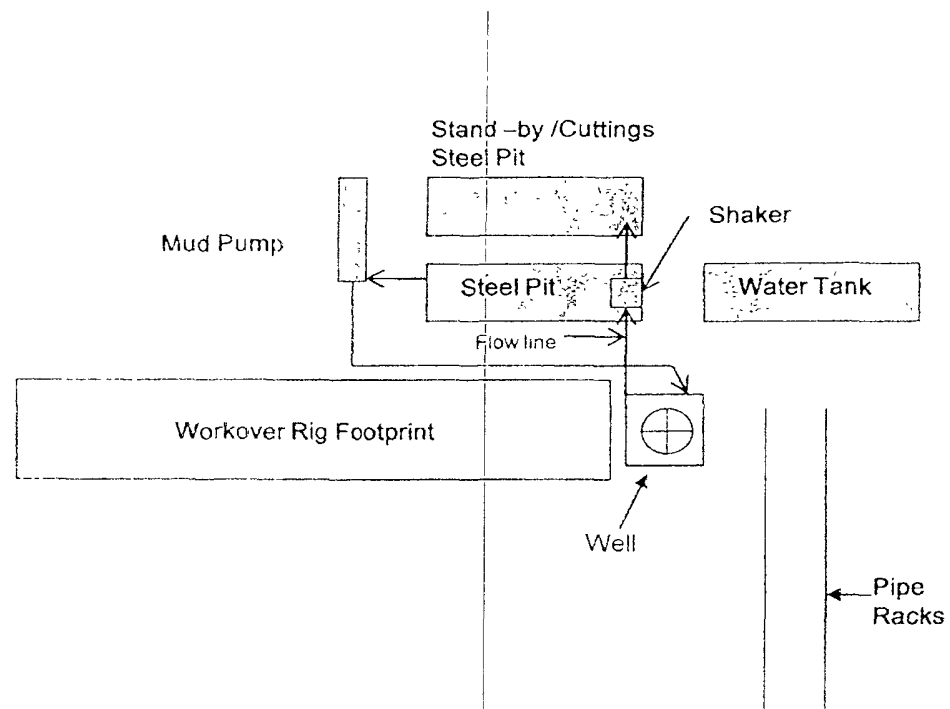
Additional tanks are used to capture unused drilling fluid or cement returns from casing jobs, as necessary.

At end of job, drilling fluid is disposed in a proper off location 3rd party injection well while fines are disposed of at a proper 3rd party waste disposal site.

This equipment will be maintained by rig crews that are on location.

COG Operating LLC

Closed Loop Equipment Diagram –
Yeso Deepenings



Skelly Unit 945
Chevron USA Inc.
30-015-32964
June 17, 2010
Conditions of Approval

1. Work to be complete within 1 year.
2. Surface disturbance beyond the existing pad requires prior approval.
3. Closed loop system to be used.
4. H2S monitoring equipment should be onsite for personnel protection from surrounding oil operations. Operator should not encounter H2S while deepening.
5. BOP to be tested to **1000 psi** based on BHP expected.
6. Variance for stand-off of less than 0.422" is approved due to NMOCD classifying the formations in this area as the Yeso group.
7. Variance approved for a minimum tie back of 150'. When plugged, cement plug will be required across this tie back and across squeezed perforations.
8. Variance for not testing seal also approved based on NMOCD classification of formations in this area as the Yeso group.
9. If cement does not circulate to DV tool, the appropriate BLM office is to be notified.
10. Test casing as per Onshore Order 2.III.B.1.h.
11. Subsequent sundry detailing work and current well test data are to be submitted when work is complete.

CRW 061710