

District I  
1625 N. French Dr., Hobbs, NM 88240

District II  
1301 W. Grand Avenue, Albuquerque, NM 87106

District III  
1000 Rio Brazos Rd., Aztec, NM 87410

District IV  
1220 S. St. Francis Dr., Santa Fe, NM 87505

State of New Mexico  
Energy, Minerals & Natural Resources Department  
OIL CONSERVATION DIVISION  
1220 South St. Francis Dr.  
Santa Fe, NM 87505

Form C-102  
Revised October 15, 2009  
Submit one copy to appropriate  
District Office

☐ AMENDED REPORT

AUG 10 2010

HOBBSON LOCATION AND ACREAGE DEDICATION PLAT

<sup>1</sup> API Number <b>30-005-64135</b>	<sup>2</sup> Pool Code <b>87320</b>	<sup>3</sup> Pool Name <b>WHITE RANCH; MISSISSIPPIAN (GAS)</b>
<sup>4</sup> Property Code <b>38281</b>	<sup>5</sup> Property Name <b>OPEN RANGE "34" FEE</b>	<sup>6</sup> Well Number <b>1H</b>
<sup>7</sup> OGRID No. <b>6137</b>	<sup>8</sup> Operator Name <b>DEVON ENERGY PRODUCTION COMPANY, L.P.</b>	<sup>9</sup> Elevation <b>3789.5</b>

<sup>10</sup> Surface Location

UL or lot no.	Section	Township	Range	Lot Idn	Feet from the	North/South line	Feet from the	East/West line	County
D	34	11 S	29 E		670	NORTH	670	WEST	CHAVES

<sup>11</sup> Bottom Hole Location If Different From Surface

UL or lot no.	Section	Township	Range	Lot Idn	Feet from the	North/South line	Feet from the	East/West line	County
A	34	11 S	29 E		670	NORTH	670	EAST	CHAVES

<sup>12</sup> Dedicated Acres <b>320</b>	<sup>13</sup> Joint or Infill	<sup>14</sup> Consolidation Code	<sup>15</sup> Order No.
---	-------------------------------	----------------------------------	-------------------------

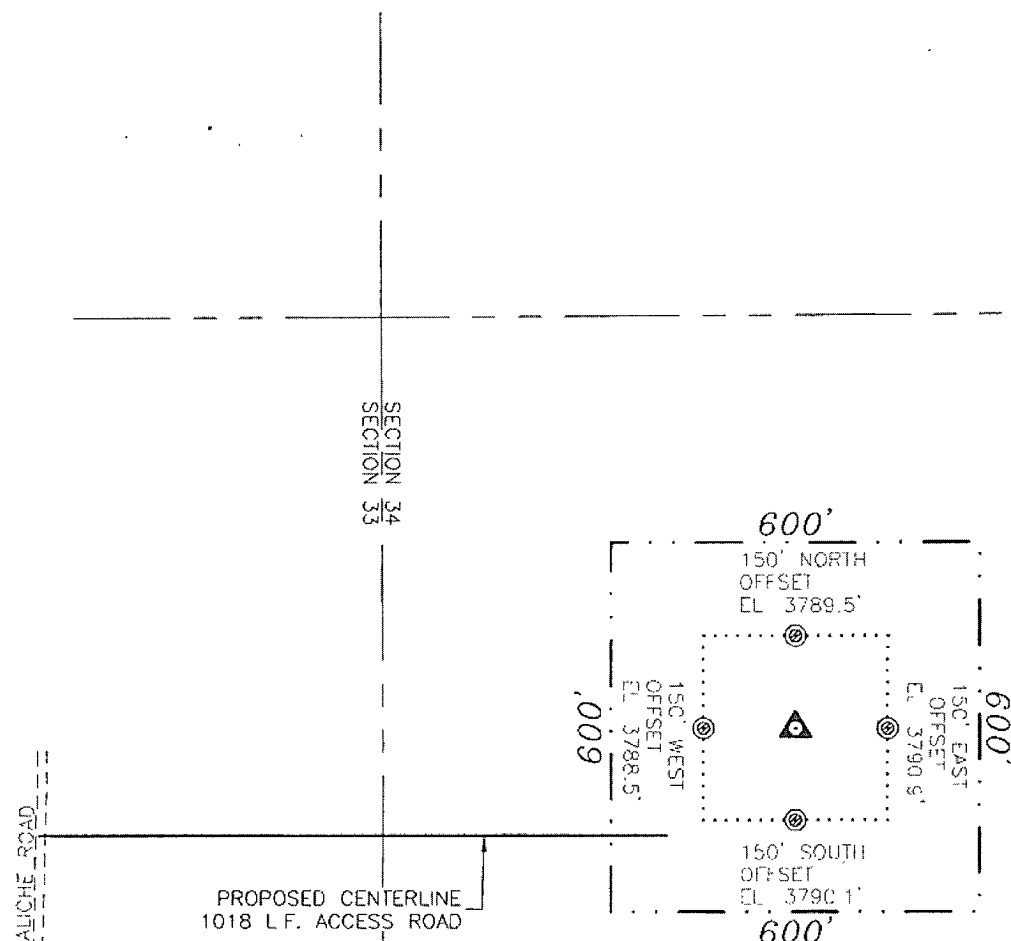
No allowable will be assigned to this completion until all interests have been consolidated or a non-standard unit has been approved by the division.

<b>SURFACE LOCATION</b> PP 670' 670'	<b>OPEN RANGE "34" FEE #1H</b> ELEV. = 3789.5' LAT. = 33°19'36.012"N (NAD83) LONG. = 104°01'28.864"W NMSP EAST (FT) N = 846530.09 E = 635611.99	<b>BOTTOM OF HOLE</b> 670' LAT. = 33°19'36.01"N LONG. = 104°00'42.41"W NMSP EAST (FT) N = 846542.13 E = 639553.49	<b>17 OPERATOR CERTIFICATION</b> I hereby certify that the information contained herein is true and complete to the best of my knowledge and belief, and that this organization either owns a working interest or undivided mineral interest in the land including the proposed bottom hole location or has a right to drill this well at this location pursuant to a contract with an owner of such a mineral or working interest, or to a voluntary pooling agreement or a compulsory pooling order heretofore entered by the division.  Signature: <i>[Signature]</i> Date: 07/27/10 Printed Name: STEPHANIE A. YSASAGA
NW CORNER SEC. 34 LAT. = 33°19'42.20"N LONG. = 104°01'36.61"W NMSP EAST (FT) N = 847198.04 E = 634939.81	SEC. 34 T.11S., R.29E.		<b>18 SURVEYOR CERTIFICATION</b> I hereby certify that the well location shown on this plat was plotted from field notes of actual surveys made by me or under my supervision and that the same is true and correct to the best of my belief. JUNE 30, 2010 Date of Survey: <i>[Signature]</i> Signature and Seal of Professional Surveyor: <i>[Signature]</i> Certificate Number: FILING OFFICE, ALBUQUERQUE, N.M. 87102 12797 SURVEY NO. 136R
SW CORNER SEC. 34 LAT. = 33°18'49.96"N LONG. = 104°01'36.59"W NMSP EAST (FT) N = 841917.81 E = 634957.01	SE CORNER SEC. 34 D.N.F.		

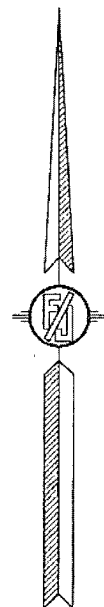
PENETRATION POINT: 670'FNL & 790' FWL; SEC 34

☐ PRODUCING AREA ☒ PROJECT AREA

SECTION 34, TOWNSHIP 11 SOUTH, RANGE 29 EAST, N.M.P.M.  
CHAVES COUNTY, STATE OF NEW MEXICO



OPEN RANGE "34" FEE #1H  
ELEV. = 3789.5'  
LAT. = 33°19'36.012"N (NAD83)  
LONG. = 104°01'28.864"W  
NMSP EAST (FT)  
N = 846530.09  
E = 635611.99



0 30 150 300 600  
SCALE 1" = 300'

**DIRECTIONS TO LOCATION**  
FROM HWY. 380 AND CR. #256 GO SOUTH ON CR #256  
(HAZEL RD.) 7.0 MILES TURN LEFT ON CALICHE ROAD AND  
GO NORTHEAST 0.4 MILES AND TURN LEFT AND GO NORTH  
0.2 MILES TO A PROPOSED ROAD SURVEY AND FOLLOW  
FLAGS EAST 783' TO THE SW. CORNER OF PROPOSED PAD  
FOR THIS LOCATION

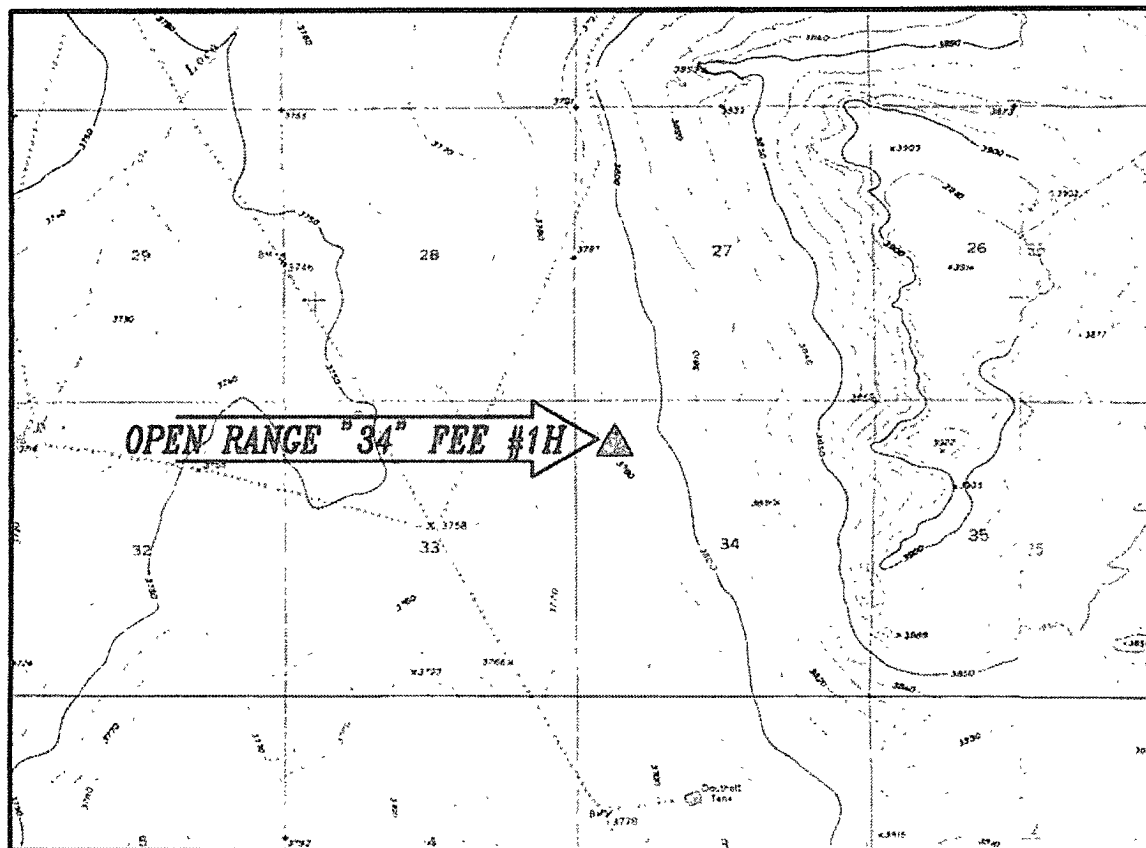
DEVON ENERGY PRODUCTION COMPANY, L.P.  
OPEN RANGE "34" FEE #1H  
LOCATED 670 FT. FROM THE NORTH LINE  
AND 670 FT. FROM THE WEST LINE OF  
SECTION 34, TOWNSHIP 11 SOUTH,  
RANGE 29 EAST, N.M.P.M.  
CHAVES COUNTY, STATE OF NEW MEXICO

SURVEY NO. 136-R1

JUNE 30, 2010

MADRON SURVEYING, INC. 301 SOUTH CANAL CARLSBAD, NEW MEXICO  
(575) 887-5850

SECTION 34, TOWNSHIP 11 SOUTH, RANGE 29 EAST, N.M.P.M.  
CHAVES COUNTY, STATE OF NEW MEXICO  
**LOCATION VERIFICATION MAP**



CONTOUR INTERVAL:  
MALSTROM RANCH

NOT TO SCALE

**DIRECTIONS TO LOCATION**

FROM HWY. 380 AND CR. #256 GO SOUTH ON  
CR #256 (HAZEL RD.) 7.0 MILES TURN LEFT ON  
CALICHE ROAD AND GO NORTHEAST 0.4 MILES  
AND TURN LEFT AND GO NORTH 0.2 MILES TO A  
PROPOSED ROAD SURVEY AND FOLLOW FLAGS  
EAST 783' TO THE SW. CORNER OF PROPOSED  
PAD FOR THIS LOCATION.

SEC. 34 TWP. 11-S RGE. 29-E  
SURVEY N.M.P.M.  
COUNTY CHAVES STATE NEW MEXICO  
DESCRIPTION 670' FNL & 670' FWL  
ELEVATION 3789.5'  
OPERATOR DEVON ENERGY PRODUCTION COMPANY, LP  
LEASE OPEN RANGE

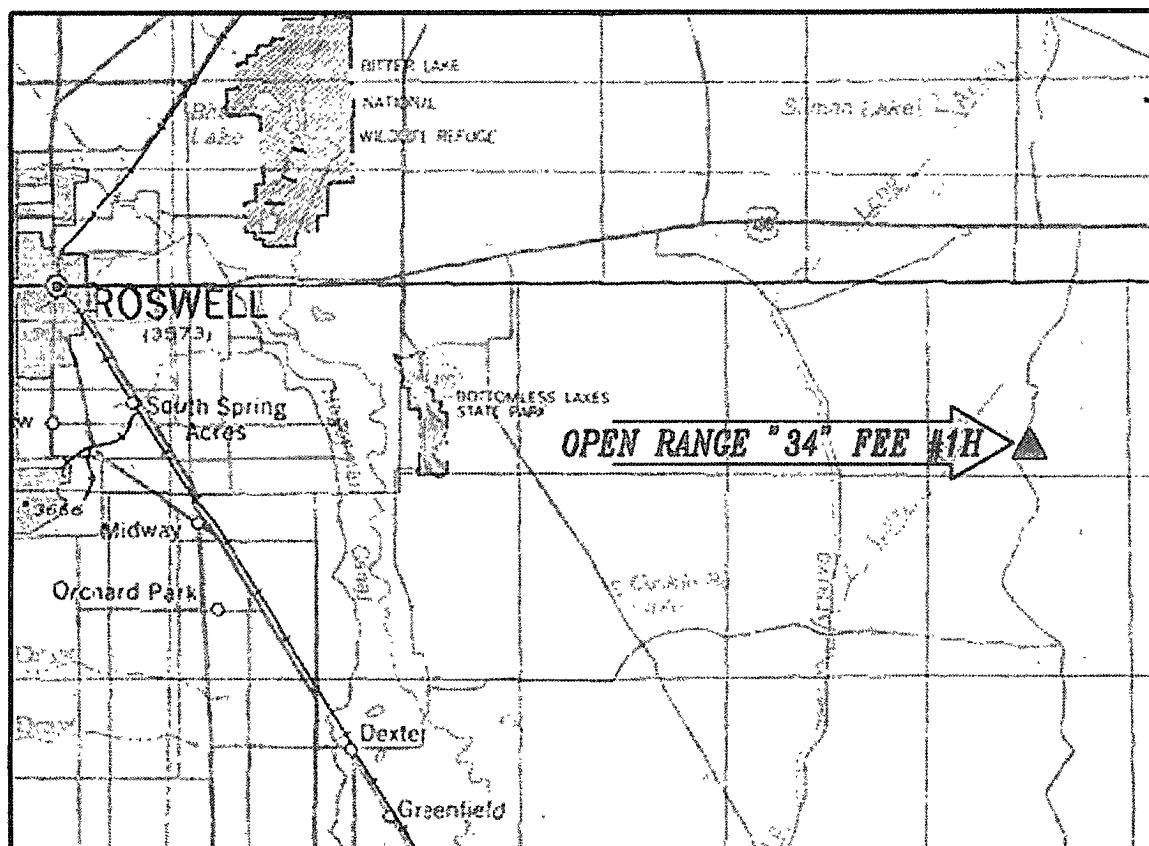
DEVON ENERGY PRODUCTION COMPANY, L.P.  
OPEN RANGE "34" FEE #1H  
LOCATED 670 FT. FROM THE NORTH LINE  
AND 670 FT. FROM THE WEST LINE OF  
SECTION 34, TOWNSHIP 11 SOUTH,  
RANGE 29 EAST, N.M.P.M.  
CHAVES COUNTY, STATE OF NEW MEXICO

JUNE 30, 2010

SURVEY NO. 136-R1

MADRON SURVEYING, INC. 401 SOUTH CANAL CARLSBAD, NEW MEXICO  
(575) 887-5430

SECTION 34, TOWNSHIP 11 SOUTH, RANGE 29 EAST, N.M.P.M.  
CHAVES COUNTY, STATE OF NEW MEXICO  
**VICINITY MAP**



**DIRECTIONS TO LOCATION**

FROM HWY. 380 AND CR. #256 GO SOUTH ON  
CR #256 (HAZEL RD.) 7.0 MILES TURN LEFT ON  
CALICHE ROAD AND GO NORTHEAST 0.4 MILES  
AND TURN LEFT AND GO NORTH 0.2 MILES TO A  
PROPOSED ROAD SURVEY AND FOLLOW FLAGS  
EAST 783' TO THE SW CORNER OF PROPOSED  
PAD FOR THIS LOCATION.

NOT TO SCALE

SEC. 34 TWP. 11-S RGE. 29-E  
SURVEY N.M.P.M.  
COUNTY CHAVES STATE NEW MEXICO  
DESCRIPTION 670' FNL & 670' FWL  
ELEVATION 3789.5'  
OPERATOR DEVON ENERGY PRODUCTION COMPANY, LP  
LEASE OPEN RANGE

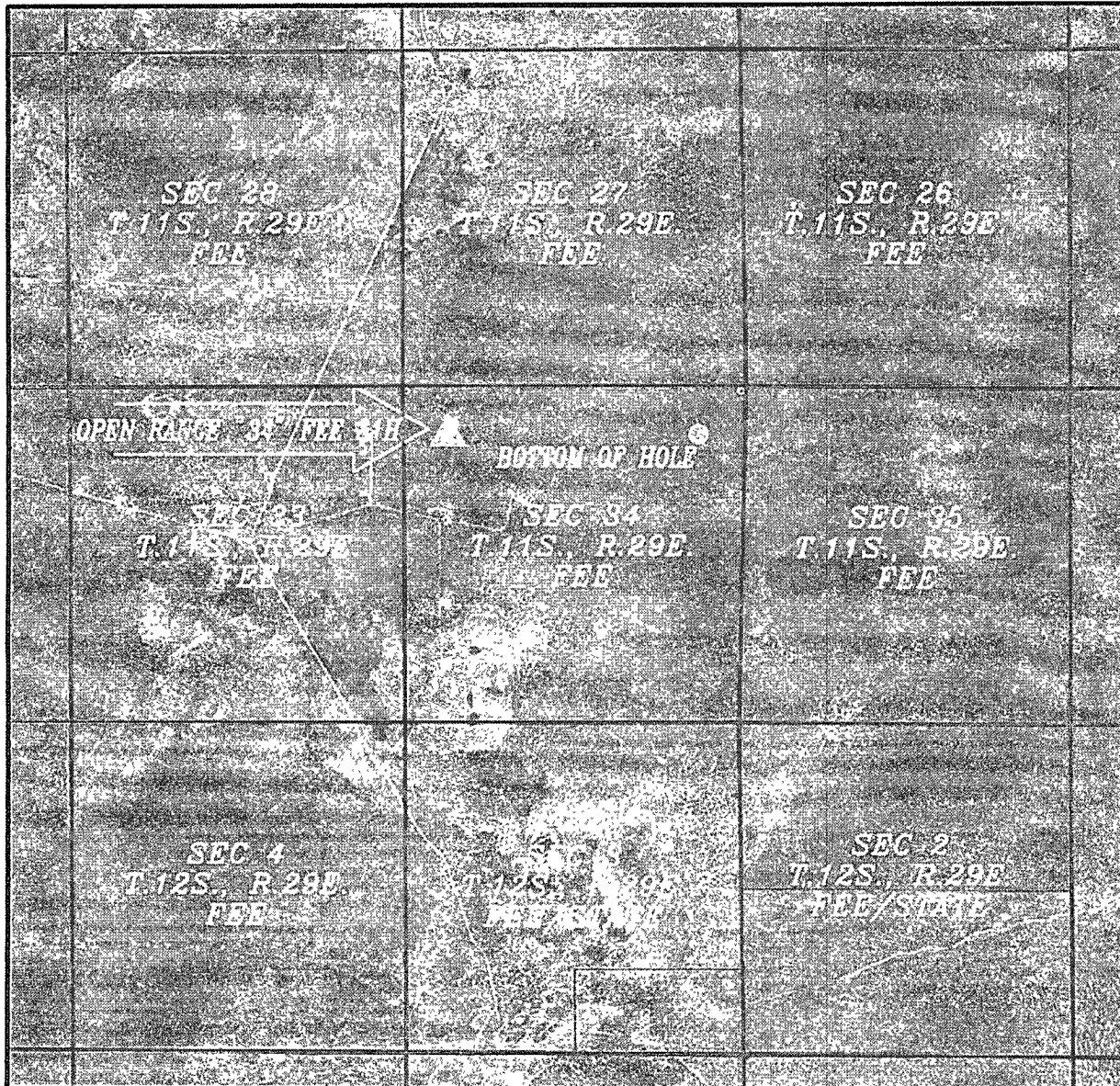
DEVON ENERGY PRODUCTION COMPANY, L.P.  
OPEN RANGE "34" FEE #1H  
LOCATED 670 FT. FROM THE NORTH LINE  
AND 670 FT. FROM THE WEST LINE OF  
SECTION 34, TOWNSHIP 11 SOUTH,  
RANGE 29 EAST, N.M.P.M.  
CHAVES COUNTY, STATE OF NEW MEXICO

JUNE 30, 2010

SURVEY NO. 136-R1

MADRON SURVEYING, INC. 701 SOUTH CANAL CARLSBAD, NEW MEXICO  
(575) 887-5830

SECTION 34, TOWNSHIP 11 SOUTH, RANGE 29 EAST, N.M.P.M.  
 CHAVES COUNTY, STATE OF NEW MEXICO  
**LAND OWNERSHIP MAP**  
**AERIAL PHOTO**



NOT TO SCALE  
 AERIAL PHOTO:  
 GOOGLE EARTH  
 USDA - AUG, 2009

DEVON ENERGY PRODUCTION COMPANY, L.P.  
 OPEN RANGE "34" FEE #1H  
 LOCATED 670 FT. FROM THE NORTH LINE  
 AND 670 FT. FROM THE WEST LINE OF  
 SECTION 34, TOWNSHIP 11 SOUTH,  
 RANGE 29 EAST, N.M.P.M.  
 CHAVES COUNTY, STATE OF NEW MEXICO

JUNE 30, 2010

SURVEY NO. 136-R1

MADRON SURVEYING, INC. 301 SOUTH CANAL CARLSBAD, NEW MEXICO  
 (575) 887-5830