

UNITED STATES  
DEPARTMENT OF THE INTERIOR  
BUREAU OF LAND MANAGEMENTFORM APPROVED  
OMB NO. 1004-0137  
Expires: January 31, 2004

## WELL COMPLETION OR RECOMPLETION REPORT AND LOG

669 Artesia

5 Lease Serial No.  
NM-047423

1a. Type of Well ☐ Oil Well ☒ Gas Well ☐ Dry Other  
b. Type of Completion: ☐ New Well ☐ Work Over ☐ Deepen ☐ Plug Back ☒ Diff. Resvr.  
Other \_\_\_\_\_

6. If Indian, Allottee or Tribe Name

7. Unit or CA Agreement Name and No.

2. Name of Operator

Mewbourne Oil Company 14744

8. Lease Name and Well No.

Hackberry Hills 1 Federal #1

3. Address

PO Box 5270 Hobbs, NM 88241

3a. Phone No. (include area code)

575-393-5905

9. API Well No.

30-015-36960

4. Location of Well (Report location clearly and in accordance with Federal requirements)

At surface 1650' FNL &amp; 990' FWL, Unit Letter E

At top prod. interval reported below

At total depth

10. Field and Pool, or Exploratory  
Wildcat11. Sec., T., R., M., on Block and Survey  
or Area Sec-1 -T22S-R25E12. County or Parish 13. State  
Eddy County NM

14. Date Spudded

03/27/09

15. Date T.D. Reached

04/30/09

16. Date Completed

08/22/10

☐ D & A☒ Ready to Prod.

17. Elevations (DF, RKB, RT, GL)\*

3671' GL

18. Total Depth MD 11450'  
TVD19. Plug Back T.D.: MD 10643'  
TVD20. Depth Bridge Plug Set: MD  
TVD

21. Type Electric &amp; Other Mechanical Logs Run (Submit copy of each)

22. Was well cored? ☒ No ☐ Yes (Submit analysis)  
Was DST run? ☒ No ☐ Yes (Submit report)  
Directional Survey? ☒ No ☐ Yes (Submit copy)

23. Casing and Liner Record (Report all strings set in well)

Hole Size	Size/Grade	Wt. (#/ft.)	Top (MD)	Bottom (MD)	Stage Cementer Depth	No. of Sk. & Type of Cement	Slurry Vol. (BBL)	Cement Top*	Amount Pulled

24. Tubing Record

Size	Depth Set (MD)	Packer Depth (MD)	Size	Depth Set (MD)	Packer Depth (MD)	Size	Depth Set (MD)	Packer Depth (MD)
N/A								

25. Producing Intervals

Formation	TOP	Bottom	Perforated Interval	Size	No. Holes	Perf. Status
A) Morrow	10620'	11375'	11207' - 11284'	0.38"	36	Closed
B) Morrow	10620'	11375'	10711' - 10721'	0.38"	40	Squeezed
C) Strawn	9798'	10215'	9821' - 10040'	0.38"	50	Open
D)						

26. Perforation Record

27. Acid, Fracture, Treatment, Cement Squeeze, Etc.

Depth Interval	Amount and Type of Material
11207' - 11284'	Frac w/1000 gals 7 1/2% NeFe HCl acid & 48000 gals 40# 70Q Binary foam carrying 40000 18/40 Versaprop
10711' - 10721'	Acidize w/5000 gals 20% HCl & ball sealers Squeezed 100 sks Class H.
9821' - 10040'	Frac w/1000 gals 7 1/2% NeFe HCl acid & 40000 gals 40# 70Q Binary foam carrying 40000 20/40 Terraprop Ultra

28. Production - Interval A

Date First Produced	Test Date	Hours Tested	Test Production	Oil BBL	Gas MCF	Water BBL	Oil Gravity Corr API	Gas Gravity	Production Method
06/26/09	07/15/09	24	→	1	504	2	49	0.603	Flowing
Choke Size	Tbg Press Flwg SI	Csg Press	24 Hr Rate	Oil BBL	Gas MCF	Water BBL	Gas Oil Ratio	Well Status	
48/64"	NA	435	→	1	504	2	504000	Closed	

ACCEPTED FOR RECORD

SEP 23 2010

Is/ Roger Hall

BUREAU OF LAND MANAGEMENT  
CARLSBAD FIELD OFFICE

28a Production - Interval B

Date First Produced	Test Date	Hours Tested	Test Production	Oil BBL	Gas MCF	Water BBL	Oil Gravity Corr API	Gas Gravity	Production Method
04/27/10	04/28/10	24	→	0	78	53	NA	0.622	Flowing
Choke Size	Tbg Press Flwg SI	Call Press	24 Hr Rate	Oil BBL	Gas MCF	Water BBL	Gas Oil Ratio	Well Status	
NA	345	0	→	0	78	53	78000	Squeezed	

(See instructions and spaces for additional data on next page)

## 28b Production - Interval C

Date First Produced 8/22/10	Test Date 08/25/10	Hours Tested 24	Test Production →	Oil BBL 0	Gas MCF 1813	Water BBL 26	Oil Gravity Corr. API NA	Gas Gravity 0.72	Production Method Flowing
Choke Size 19/64"	Tbg Press Flwg SI NA	Csg. Press 1100	24 Hr. Rate →	Oil BBL 0	Gas MCF 1813	Water BBL 26	Gas: Oil Ratio 1813000	Well Status Open	

## 28c Production - Interval D

Date First Produced	Test Date	Hours Tested	Test Production →	Oil BBL	Gas MCF	Water BBL	Oil Gravity Corr. API	Gas Gravity	Production Method
Choke Size	Tbg Press Flwg SI	Csg. Press	24 Hr. Rate →	Oil BBL	Gas MCF	Water BBL	Gas: Oil Ratio	Well Status	

## 29. Disposition of Gas (Sold used for fuel, vented, etc.)

SOLD

## 30. Summary of Porous Zones (Include Aquifers):

Show all important zones of porosity and contents thereof: Cored intervals and all drill-stem tests, including depth interval tested, cushion used, time tool open, flowing and shut-in pressures and recoveries.

## 31. Formation (Log) Markers

Formation	Top	Bottom	Descriptions, Contents, etc.	Name	Top Meas. Depth
Capitan	473				
Delaware	2405				
Bone Spring	4695				
Wolfcamp	8295				
Cisco	9441				
Canyon	9635				
Strawn	9798				
Atoka	10215				
Morrow	10620				
Barnett	11375				
TD	11450				
LTD	11446				

## 32. Additional remarks (include plugging procedure):

## 33. Circle enclosed attachments:

- 1 Electrical/Mechanical Logs (1 full set req'd.)      2 Geologic Report      3 DST Report      4 Directional Survey  
 5 Sundry Notice for plugging and cement verification      6 Core Analysis      ⑦ Other: Completion sundry, C-104, C-102, C-144 CLEZ Closure

## 34. I hereby certify that the foregoing and attached information is complete and correct as determined from all available records (see attached instructions)\*

Name (please print) Jackie Lathan

Title Hobbs Regulatory

Signature

Date 08/25/10

Title 18 U.S.C. Section 1001 and Title 43 U.S.C. Section 1212 make it a crime for any person knowingly and willfully to make to any department or agency of the United States any false fictitious or fraudulent statements or representations as to any matter within its jurisdiction.

DISTRICT I  
1625 N. French Dr., Hobbs, NM 88240

DISTRICT II  
1301 W. Grand Avenue, Artesia, NM 88210

DISTRICT III  
1000 Rio Brazos Rd., Aztec, NM 87410

DISTRICT IV  
1220 S. St. Francis Dr., Santa Fe, NM 87505

State of New Mexico  
Energy, Minerals and Natural Resources Department

Form C-102  
Revised October 12, 2005

Submit to Appropriate District Office  
State Lease - 4 Copies  
Fee Lease - 3 Copies

OIL CONSERVATION DIVISION  
1220 South St. Francis Dr.  
Santa Fe, New Mexico 87505

☐ AMENDED REPORT

WELL LOCATION AND ACREAGE DEDICATION PLAT

API Number <b>30-015-36960</b>	Pool Code	Pool Name <b>Wildcat</b>
Property Code <b>37606</b>	Property Name <b>HACKBERRY HILLS "1" FEDERAL</b>	Well Number <b>1</b>
OGRID No. <b>14744</b>	Operator Name <b>MEWBOURNE OIL COMPANY</b>	Elevation <b>3671'</b>

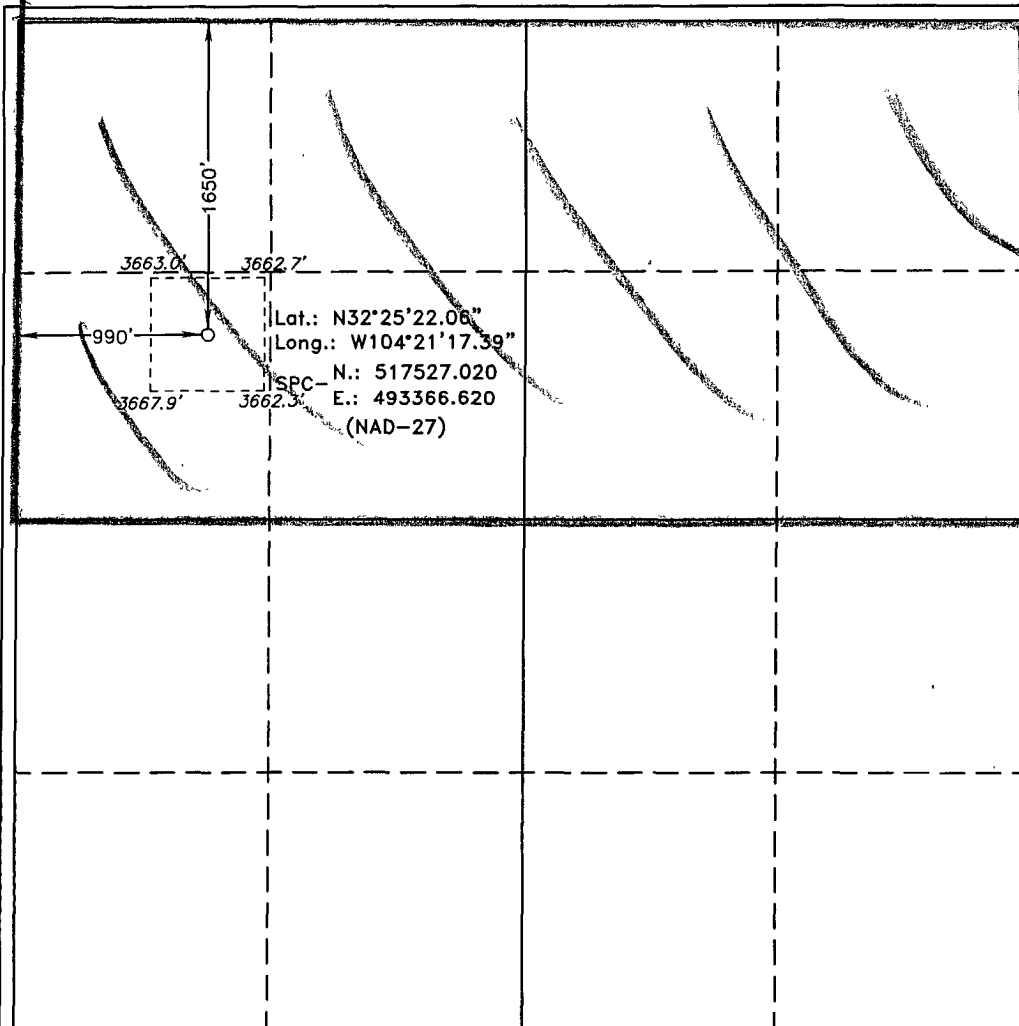
Surface Location

UL or lot No.	Section	Township	Range	Lot Idn	Feet from the	North/South line	Feet from the	East/West line	County
<b>E</b>	<b>1</b>	<b>22 S</b>	<b>25 E</b>		<b>1650</b>	<b>NORTH</b>	<b>990</b>	<b>WEST</b>	<b>EDDY</b>

Bottom Hole Location If Different From Surface

UL or lot No.	Section	Township	Range	Lot Idn	Feet from the	North/South line	Feet from the	East/West line	County
Dedicated Acres <b>320</b>	Joint or Infill	Consolidation Code	Order No.						

NO ALLOWABLE WILL BE ASSIGNED TO THIS COMPLETION UNTIL ALL INTERESTS HAVE BEEN CONSOLIDATED  
OR A NON-STANDARD UNIT HAS BEEN APPROVED BY THE DIVISION



OPERATOR CERTIFICATION

I hereby certify that the information contained herein is true and complete to the best of my knowledge and belief, and that this organization either owns a working interest or unleased mineral interest in the land including the proposed bottom hole location pursuant to a contract with an owner of such a mineral or working interest, or to a voluntary pooling agreement or a compulsory pooling order heretofore entered by the division.

*Jackie Lathan* 8/25/10  
Signature Date

*Jackie Lathan*  
Printed Name

SURVEYOR CERTIFICATION

I hereby certify that the well location shown on this plat was plotted from field notes of actual surveys made by me or under my supervision, and that the same is true and correct to the best of my belief.

AUG 25 2008

Date Surveyed  
Signature of Professional Surveyor

W.O. No. 28350

Certificate No. Gary L. Jones 7977

BASIN SURVEYS

District I  
1625 N. French Dr , Hobbs, NM 88240

District II  
1301 W. Grand Avenue, Artesia, NM 88210

District III  
1000 Rio Brazos Rd , Aztec, NM 87410

District IV  
1220 S. St Francis Dr , Santa Fe, NM 87505

State of New Mexico  
Energy, Minerals & Natural Resources

Oil Conservation Division  
1220 South St. Francis Dr.  
Santa Fe, NM 87505

Form C-104  
Revised Feb. 26, 2007

Submit to Appropriate District Office  
5 Copies

☐ AMENDED REPORT

**I. REQUEST FOR ALLOWABLE AND AUTHORIZATION TO TRANSPORT**

<sup>1</sup> Operator name and Address Mewbourne Oil Company PO Box 5270 Hobbs, NM 88241		<sup>2</sup> OGRID Number 14744
		<sup>3</sup> Reason for Filing Code/ Effective Date Diff Resvr / 08/22/10
<sup>4</sup> API Number 30 - 015 - 36960	<sup>5</sup> Pool Name Wilcat	<sup>6</sup> Pool Code
<sup>7</sup> Property Code 37606	<sup>8</sup> Property Name Hackberry Hills 1 Federal	<sup>9</sup> Well Number 1

**II. <sup>10</sup> Surface Location**

UI or lot no.	Section	Township	Range	Lot.Idn	Feet from the	North/South Line	Feet from the	East/West line	County
E	1	22S	25E		1650	N	990	W	Eddy

**<sup>11</sup> Bottom Hole Location**

UI or lot no.	Section	Township	Range	Lot.Idn	Feet from the	North/South Line	Feet from the	East/West line	County
<sup>12</sup> Lse Code F	<sup>13</sup> Producing Method Code Flowing	<sup>14</sup> Gas Connection Date 08/22/10	<sup>15</sup> C-129 Permit Number	<sup>16</sup> C-129 Effective Date	<sup>17</sup> C-129 Expiration Date				

**III. Oil and Gas Transporters**

<sup>18</sup> Transporter OGRID	<sup>19</sup> Transporter Name and Address	<sup>20</sup> O/G/W
34053	Plains Marketing  3514 Lovington Hwy Hobbs, NM 88240	O
025561	Yates Petroleum Corporation  105 S 4 <sup>th</sup> Street Artesia, NM 88210	G

**IV. Well Completion Data**

<sup>21</sup> Spud Date 03/27/09	<sup>22</sup> Ready Date 08/22/10	<sup>23</sup> TD 11450'	<sup>24</sup> PBT 10643'	<sup>25</sup> Perforations 9821'-10040	<sup>26</sup> DHC, MC
<sup>27</sup> Hole Size	<sup>28</sup> Casing & Tubing Size	<sup>29</sup> Depth Set	<sup>30</sup> Sacks Cement		

**V. Well Test Data**

<sup>31</sup> Date New Oil 08/22/10	<sup>32</sup> Gas Delivery Date 08/22/10	<sup>33</sup> Test Date 08/25/10	<sup>34</sup> Test Length 24	<sup>35</sup> Tbg. Pressure NA	<sup>36</sup> Csg. Pressure 1100
<sup>37</sup> Choke Size 10/64"	<sup>38</sup> Oil n	<sup>39</sup> Water 26	<sup>40</sup> Gas 1813	<sup>41</sup> Test Method Producing	