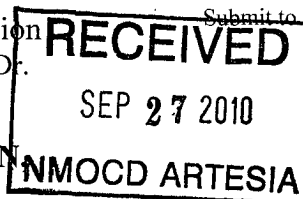


District I
1625 N. French Dr., Hobbs, NM 88240
District II
1301 W. Grand Avenue, Artesia, NM 88210
District III
1000 Rio Brazos Road, Aztec, NM 87410
District IV
1220 S. St. Francis Dr., Santa Fe, NM 87505

State of New Mexico
Energy Minerals and Natural Resources

Form C-101
June 16, 2001

Oil Conservation Division
1220 South St. Francis Dr.
Santa Fe, NM 87505



**APPLICATION FOR PERMIT TO DRILL, RE-ENTER, DEEPEN
PLUGBACK, OR ADD A ZONE**

¹ Operator Name and Address Lime Rock Resources A, L.P. 1111 Bagby St., Suite 4600 Houston, TX 77002		² OGRID Number 255333
³ Property Code 38085	⁵ Property Name Anthony	³ API Number 30-015-38234
⁹ Proposed Pool 1 Artesia, Glorieta-Yeso Northeast (96836)		¹⁰ Proposed Pool 2

Surface Location

UL or lot no.	Section	Township	Range	Lot Idn	Feet from the	North/South line	Feet from the	East/West line	County
P	30	17S	28E		430	SOUTH	800	EAST	EDDY

Proposed Bottom Hole Location If Different From Surface

UL or lot no.	Section	Township	Range	Lot Idn	Feet from the	North/South line	Feet from the	East/West line	County

Additional Well Information

¹¹ Work Type Code N	¹² Well Type Code O	¹³ Cable/Rotary R	¹⁴ Lease Type Code F S	¹⁵ Ground Level Elevation 3644'
¹⁶ Multiple N	¹⁷ Proposed Depth 4,800'	¹⁸ Formation Lower Yeso	¹⁹ Contractor United	²⁰ Spud Date 11/1/10

Proposed Casing and Cement Program

Hole Size	Casing Size	Casing weight/foot	Setting Depth	Sacks of Cement	Estimated TOC
12 1/4"	8 5/8"	24#	450'	375sx "C" + add.	Surface
7 7/8"	5 1/2"	15.5#	4,800'	450 sx 35/65 Poz/C	Lead
				550 sx C	Tail to surface

²² Describe the proposed program. If this application is to DEEPEN or PLUG BACK, give the data on the present productive zone and proposed new productive zone. Describe the blowout prevention program, if any. Use additional sheets if necessary.

Lime Rock Resources A, L.P. proposes to drill/test the Lower Yeso formation. Approximately 450 feet will be drilled with fresh water, then set and cement 8 5/8" surface casing to 450 feet.

Drill 7 7/8" hole to T.D. at approx. 4,800'. Run O/H logs. Set 5 1/2" casing to T.D. and cement will be circulated back to surface.

Will perforate the Yeso formation and stimulate, as necessary, for optimum production. Produce well by flowing or pumping

H2S levels are not expected to be high enough to require an H2S contingency program.

See exhibit "A" for BOP.

²³ I hereby certify that the information given above is true and complete to the best of my knowledge and belief.

Signature:

George R. Smith

Printed name:
George R. Smith

Title:
POA agent for Lime Rock Resources A, L.P.

E-mail Address
gr.smith1@hotmail.com

Date:
9/24/2010

Phone:
575-623-4940

OIL CONSERVATION DIVISION

Approved by:

LR Dade

Title:

Dist II Supervisor

Approval Date: OCT 18 2010

Expiration Date:

10/18/2012

Conditions of Approval Attached ☐

K26

DISTRICT I
1625 N. FRENCH DR., HOBBS, NM 88240

State of New Mexico
Energy, Minerals and Natural Resources Department

Form C-102

Revised October 12, 2005

DISTRICT II
1301 W. GRAND AVENUE, ARTESIA, NM 88210

OIL CONSERVATION DIVISION

Submit to Appropriate District Office

DISTRICT III
1000 RIO BRAZOS RD., AZTEC, NM 87410

11885 SOUTH ST. FRANCIS DR.
Santa Fe, New Mexico 87505

State Lease - 4 Copies
Fee Lease - 3 Copies

DISTRICT IV
11885 S. ST. FRANCIS DR., SANTA FE, NM 87505

WELL LOCATION AND ACREAGE DEDICATION PLAT

☐ AMENDED REPORT

API Number 30-015-38234	Pool Code 96836	Pool Name RED LAKE Artesia Gloreata-Yeso Northeast
Property Code 38085	Property Name ANTHONY STATE	Well Number 2
OGRID No. 255333	Operator Name LIME ROCK RESOURCES A, L.P.	Elevation 3644'

Surface Location

UL or lot No.	Section	Township	Range	Lot Idn	Feet from the	North/South line	Feet from the	East/West line	County
P	30	17-S	28-E		430	SOUTH	800	EAST	EDDY

Bottom Hole Location If Different From Surface

UL or lot No.	Section	Township	Range	Lot Idn	Feet from the	North/South line	Feet from the	East/West line	County

Dedicated Acres 40	Joint or Infill	Consolidation Code	Order No.
-----------------------	-----------------	--------------------	-----------

NO ALLOWABLE WILL BE ASSIGNED TO THIS COMPLETION UNTIL ALL INTERESTS HAVE BEEN CONSOLIDATED
OR A NON-STANDARD UNIT HAS BEEN APPROVED BY THE DIVISION

LOT 1			
LOT 2			
LOT 3			
LOT 4			

GEODETIC COORDINATES
NAD 27 NME
SURFACE LOCATION

Y=654378.7 N
X=538355.7 E

LAT.=32.798914° N
LONG.=104.208509° W

XXXXXXXXXXXXXXXXXXXX
XXXXXXXXXXXXXXXXXXXX
XXXXXXXXXXXXXXXXXXXX
XXXXXXXXXXXXXXXXXXXX

430'
800'

OPERATOR CERTIFICATION
I hereby certify that the information herein is true and complete to the best of my knowledge and belief, and that this organization either owns a working interest or unleased mineral interest in the land including the proposed bottom hole location or has a right to drill this well at this location pursuant to a contract with an owner of such mineral or working interest, or to a voluntary pooling agreement or a compulsory pooling order heretofore entered by the division.

Signature: *George R. Smith* Date: 9/24/10
Printed Name: George R. Smith, agent

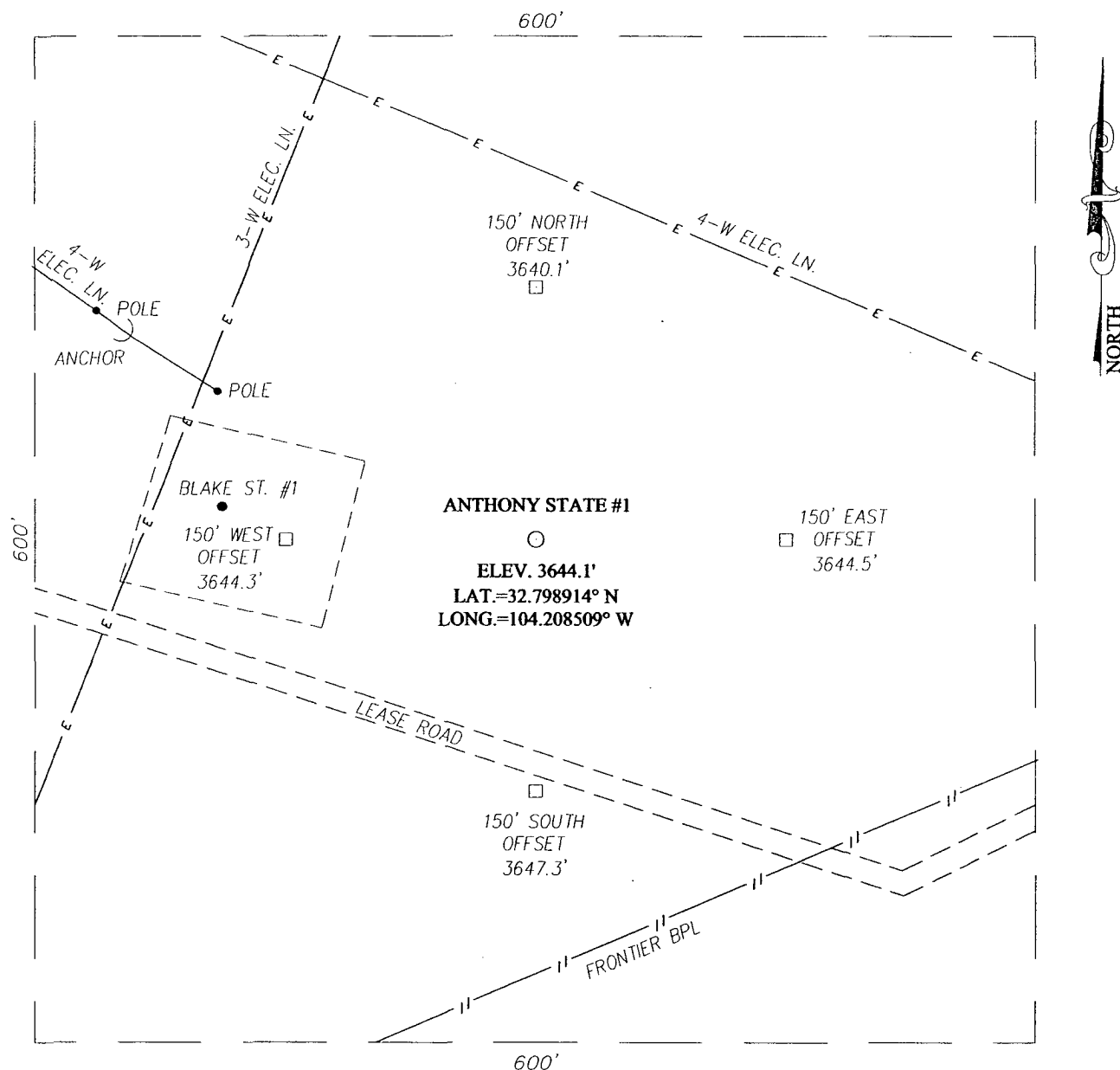
SURVEYOR CERTIFICATION
I hereby certify that the well location shown on this plat was plotted from field notes of actual surveys made by me or under my supervision, and that the same is true and correct to the best of my belief.

Date Surveyed: AUGUST 31, 2010
Signature & Seal of Professional Surveyor: *Ronald J. Eidson*
Certificate No. GARY G. EIDSON 12641
RONALD J. EIDSON 3239

SECTION 30, TOWNSHIP 17 SOUTH, RANGE 28 EAST, N.M.P.M.

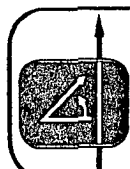
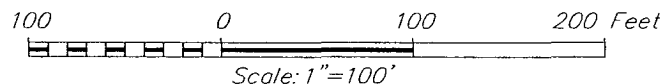
EDDY COUNTY

NEW MEXICO



DIRECTIONS TO LOCATION

FROM THE INTERSECTION OF U.S. HWY. #82 AND TV TOWER ROAD, GO SOUTH ON TV TOWER ROAD APPROX. 300 FEET. TURN RIGHT AND GO SOUTHWEST APPROX. 0.1 MILE. VEER RIGHT AND GO WEST-NORTHWEST APPROX. 300 FEET. THE LOCATION STAKE IS APPROX. 140 FEET NORTH OF ROAD.



PROVIDING SURVEYING SERVICES
SINCE 1946

JOHN WEST SURVEYING COMPANY

412 N. DAL PASO
HOBBS, N.M. 88240
(575) 393-3117

LIME ROCK RESOURCES A, L.P.

ANTHONY STATE #2

LOCATED 430 FEET FROM THE SOUTH LINE
AND 800 FEET FROM THE EAST LINE OF SECTION 30,
TOWNSHIP 17 SOUTH, RANGE 28 EAST, N.M.P.M.,
EDDY COUNTY, NEW MEXICO

Survey Date: 8/31/10	Sheet 1 of 1 Sheets		
W.O. Number: 10.11.1315	Dr By: LA	Rev 1: N/A	
Date: 9/15/10	10111315	Scale: 1"=100'	

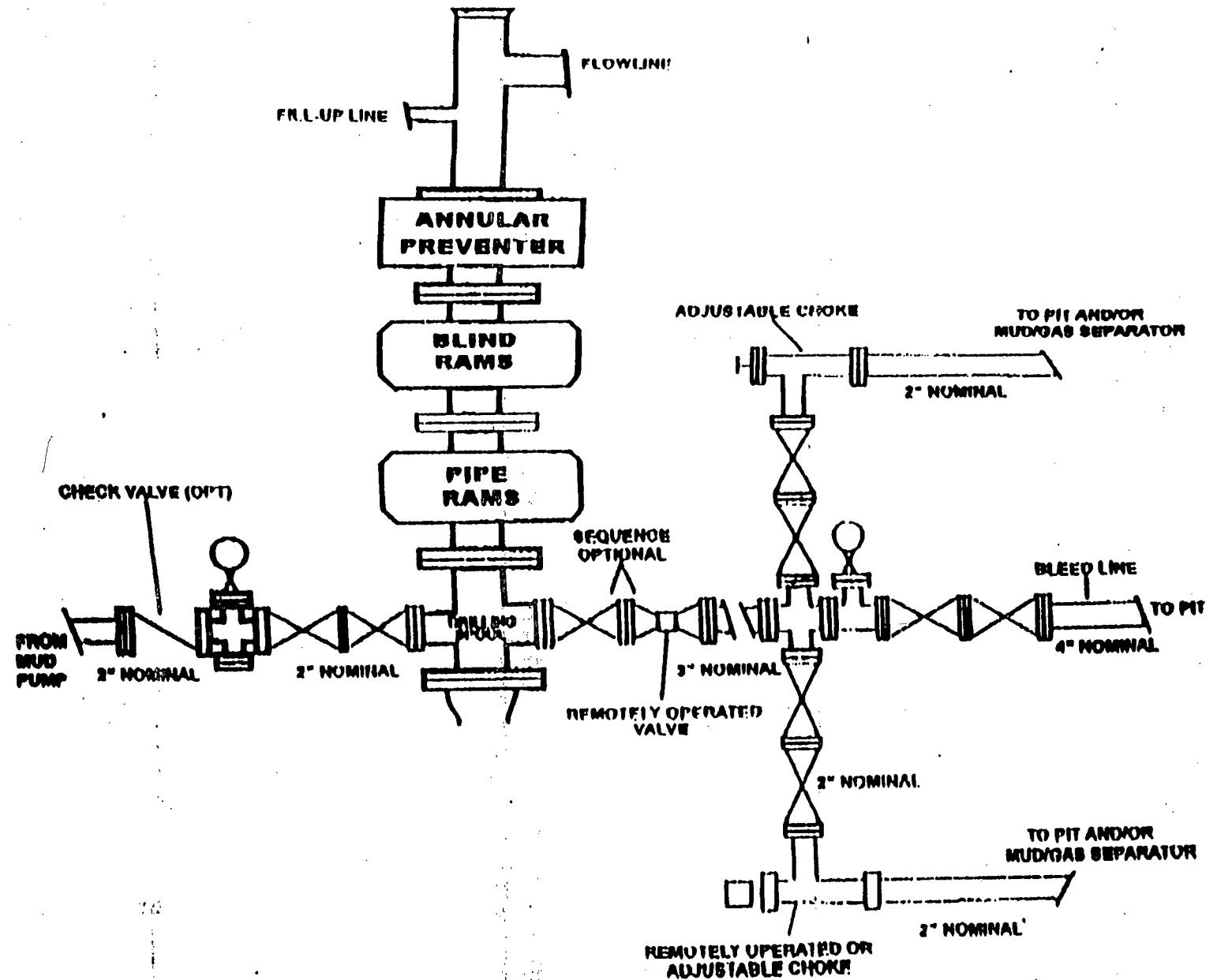
**BOP DIAGRAM
3000# SYSTEM**

EXHIBIT "A"
LIME ROCK RESOURCES A, L.P.
BOP Specifications