

OCD-ARTESIA

Form 3160-5
(February 2005)UNITED STATES
DEPARTMENT OF THE INTERIOR
BUREAU OF LAND MANAGEMENTFORM APPROVED
OMB No. 1004-0137
Expires: March 31, 2007**SUNDRY NOTICES AND REPORTS ON WELLS**
Do not use this form for proposals to drill or to re-enter an abandoned well. Use Form 3160-3 (APD) for such proposals.5. Lease Serial No.
NM 012121

6. If Indian, Allottee or Tribe Name

SUBMIT IN TRIPLICATE - Other instructions on page 2

1. Type of Well

☒ Oil Well ☐ Gas Well ☐ Other2. Name of Operator
Devon Energy Production Company, L.P.3a. Address
20 North Broadway, Oklahoma City, OK 731023b. Phone
405-235-36114. Location of Well (Footage, Sec., T., R., M., or Survey Description)
SL: 330 FNL & 660 FWL BHL: 330 FSL & 660 FWL SEC 26 T24S R31E

7. If Unit of CA/Agreement, Name and/or No.

8. Well Name and No.
Cotton Draw Unit 121H9. API Well No.
30-015-3740910. Field and Pool or Exploratory Area
Poker Lake South, Delaware11. Country or Parish, State
Eddy County, NM

12. CHECK THE APPROPRIATE BOX(ES) TO INDICATE NATURE OF NOTICE, REPORT OR OTHER DATA

TYPE OF SUBMISSION	TYPE OF ACTION			
<input checked="" type="checkbox"/> Notice of Intent	<input type="checkbox"/> Acidize	<input type="checkbox"/> Deepen	<input type="checkbox"/> Production (Start/Resume)	<input type="checkbox"/> Water Shut-Off
<input type="checkbox"/> Subsequent Report	<input type="checkbox"/> Alter Casing	<input type="checkbox"/> Fracture Treat	<input type="checkbox"/> Reclamation	<input type="checkbox"/> Well Integrity
<input type="checkbox"/> Final Abandonment Notice	<input type="checkbox"/> Casing Repair	<input type="checkbox"/> New Construction	<input type="checkbox"/> Recomplete	<input type="checkbox"/> Other
	<input checked="" type="checkbox"/> Change Plans	<input type="checkbox"/> Plug and Abandon	<input type="checkbox"/> Temporarily Abandon	
	<input type="checkbox"/> Convert to Injection	<input type="checkbox"/> Plug Back	<input type="checkbox"/> Water Disposal	

13. Describe Proposed or Completed Operation: Clearly state all pertinent details, including estimated starting date of any proposed work and approximate duration thereof. If the proposal is to deepen directionally or recompleat horizontally, give subsurface locations and measured and true vertical depths of all pertinent markers and zones. Attach the Bond under which the work will be performed or provide the Bond No. on file with BLM/BIA. Required subsequent reports must be filed within 30 days following completion of the involved operations. If the operation results in a multiple completion or recompleat in a new interval, a Form 3160-4 must be filed once testing has been completed. Final Abandonment Notices must be filed only after all requirements, including reclamation, have been completed and the operator has determined that the site is ready for final inspection.)

Devon Energy Production Company L. P. respectfully requests to change the production hole to 8 3/4" instead of 8 1/2". Please see attached sheet with the following changes: Pressure Control Equipment and Cementing Program.

(Attachments)

**SEE ATTACHED FOR
CONDITIONS OF APPROVAL**

14. I hereby certify that the foregoing is true and correct.

Name (Printed/Typed)
Judy A. Barnett

Title Regulatory Analyst

Signature

Date 09/03/2010

THIS SPACE FOR FEDERAL OR STATE OFFICIAL USE

Approved by

Title

Office

Conditions of approval, if any, are attached. Approval of this notice does not warrant or certify that the applicant holds legal or equitable title to those rights in the subject lease which would entitle the applicant to conduct operations thereon.

Title 18 U.S.C. Section 1001 and Title 43 U.S.C. Section 1212, make it a crime for any person knowingly and willfully to make any false statement or representation to any officer or employee of the United States any false, fictitious or fraudulent statements or representations as to any matter within its jurisdiction.

(Instructions on page 2)

APPROVED

SEP 21 2010

/s/ Dustin Winkler

BUREAU OF LAND MANAGEMENT
CARLSBAD FIELD OFFICE

DJS

COTTON DRAW UNIT 121H
API# 30-015-37409
SEC 26 T24S R31E
EDDY COUNTY, NM
DRILLING SUNDRY
9.3.10

The production hole will be 8-3/4" instead of 8-1/2".

Pressure Control Equipment:

The BOP system used to drill the intermediate hole will consist of a 13-5/8" 3M Annular preventer. The BOP system will be tested as a 2M system prior to drilling out the surface casing shoe.

The BOP system used to drill the production hole will consist of a 11" 5M Double Ram and Annular preventer. The BOP system will be tested as a 3M system prior to drilling out the intermediate casing shoe.

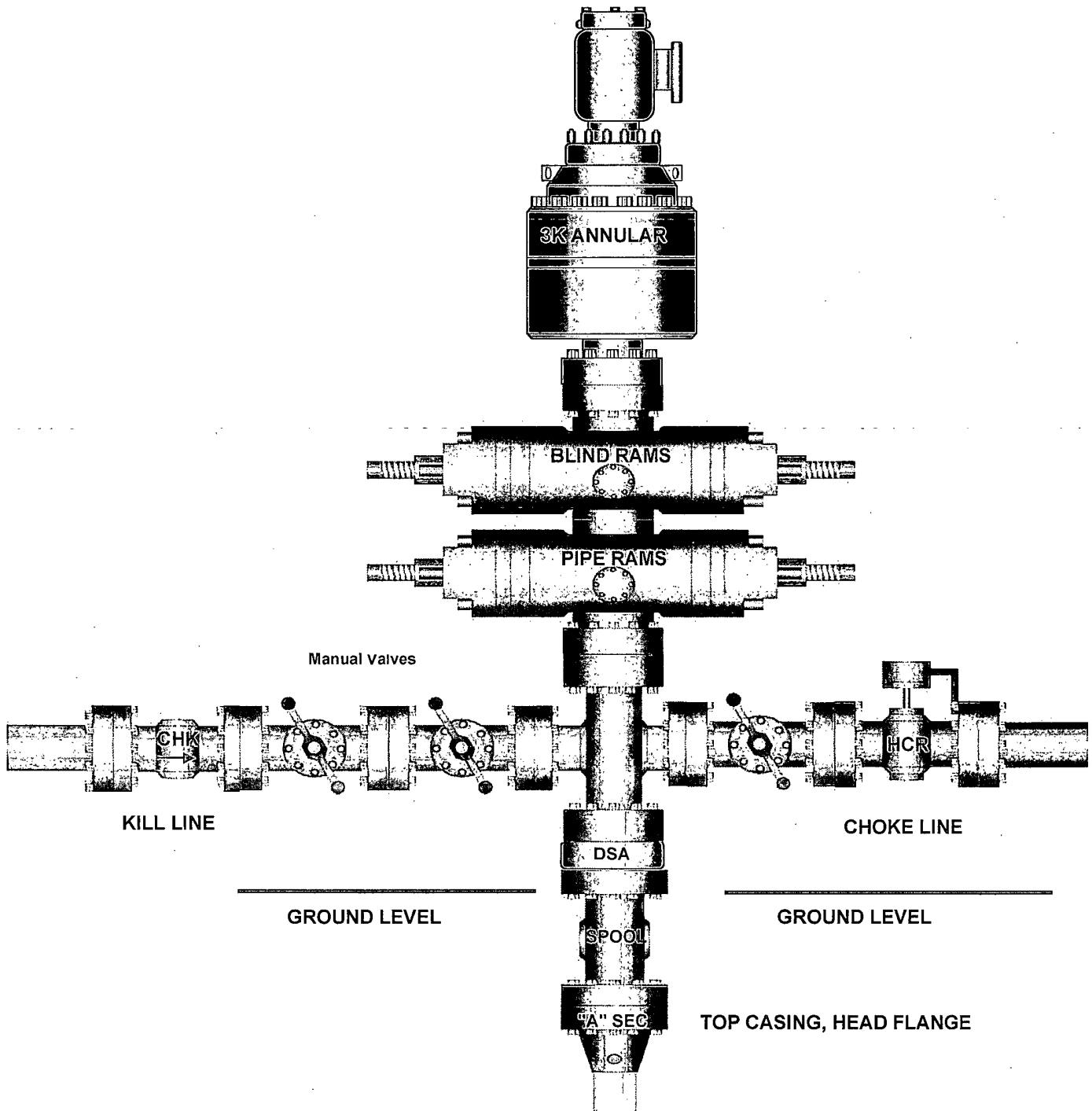
See attached BOP and choke manifold schematics.

Cementing Program

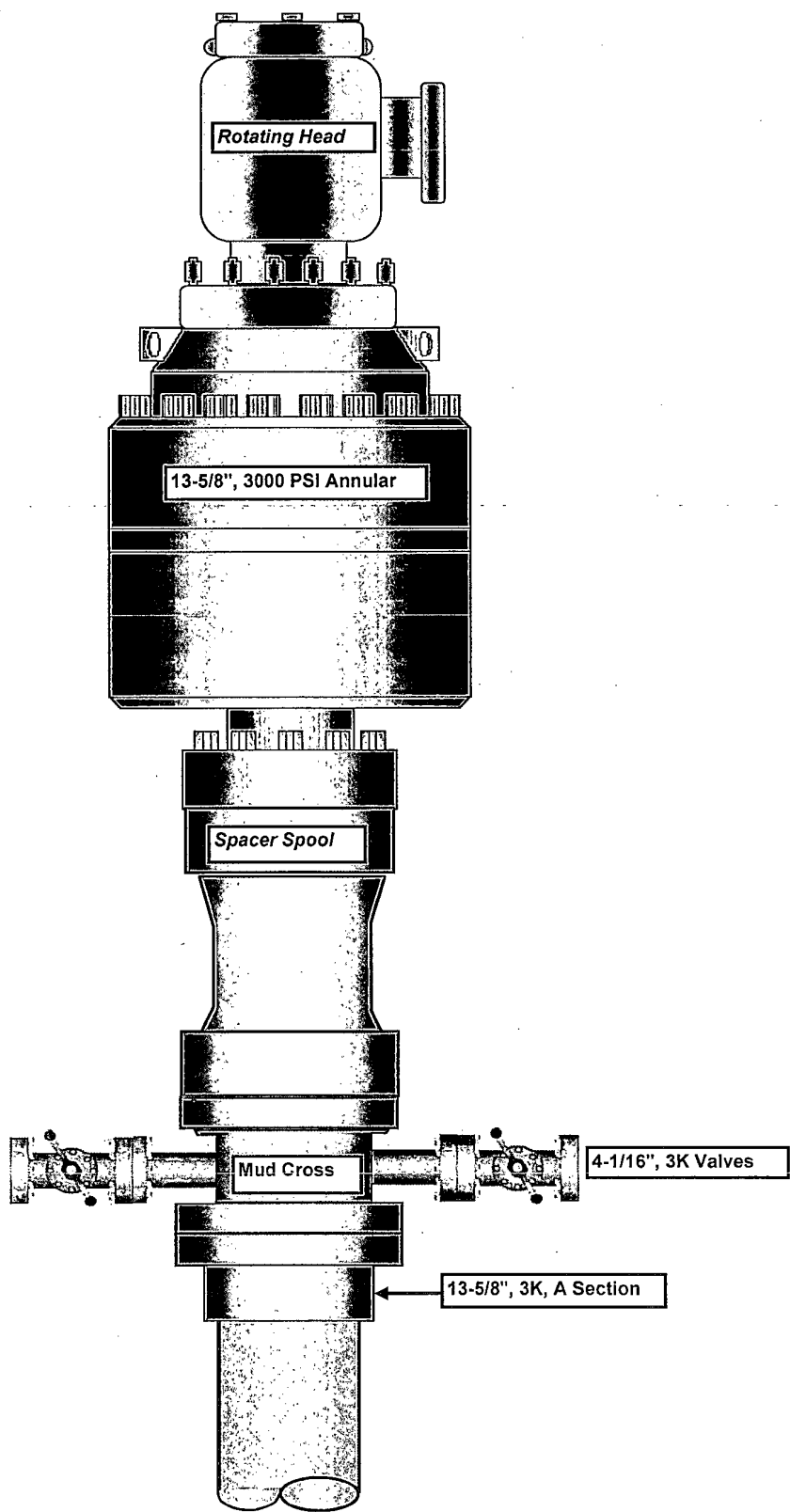
13-3/8" Surface	Lead: 485 sacks Class C Cement + 2% bwoc Calcium Chloride + 0.125 lbs/sack Cello Flake + 4% bwoc Bentonite + 81.4% Fresh Water, 13.5 ppg, Yield: 1.75 cf/sk TOC @ surface. Tail: 250 sacks Class C Cement + 2% bwoc Calcium Chloride + 0.125 lbs/sack Cello Flake + 56.3% Fresh Water, 14.8 ppg Yield: 1.35 cf/sk
9-5/8" Intermediate	Lead: 1,200 sacks (35:65) Poz (Fly Ash):Class C Cement + 5% bwow Sodium Chloride + 0.125 lbs/sack Cello Flake + 6% bwoc Bentonite + 107.8% Fresh Water, 12.5 ppg Yield: 2.04 cf/sk TOC @ surface Tail: 300 sacks (60:40) Poz (Fly Ash):Class C Cement + 5% bwow Sodium Chloride + 0.125 lbs/sack Cello Flake + 0.4% bwoc Sodium Metasilicate + 4% bwoc MPA-5 + 64.7% Water, 13.8 ppg Yield: 1.38 cf/sk.
5-1/2" Production	1st Stage Lead: 450 sacks (35:65) Poz (Fly Ash):Class H Cement + 5% bwow Sodium Chloride + 0.3% bwoc CD-32 + 0.5% bwoc FL-25 + 2% bwoc Bentonite + 0.6% bwoc Sodium Metasilicate + 0.5% bwoc FL-52A + 102.5% Fresh Water, 12.5 ppg Yield: 2.01 cf/sk Tail: 1,300 sacks (50:50) Poz (Fly Ash):Class H Cement + 1% bwow Sodium Chloride + 0.2% bwoc R-3 + 0.125 lbs/sack Cello Flake + 0.5% bwoc BA-10A + 4% bwoc MPA-5 + 58.3% Fresh Water, 14.2 ppg Yield: 1.28 cf/sk DV TOOL at ~6,000 ft 2nd Stage Lead: 350 sacks Class C Cement + 1% bwow Calcium Chloride + 0.125 lbs/sack Cello Flake + 157.8% Fresh Water, 11.4 ppg Yield: 2.89 cf/sk TOC @ 3,880 ft Tail: 100 sacks (60:40) Poz (Fly Ash):Class C Cement + 1% bwow Sodium Chloride + 0.2% bwoc R-3 + 0.125 lbs/sack Cello Flake + 0.5% bwoc BA-10A + 4% bwoc MPA-5 + 63.2% Fresh Water, 13.8 ppg Yield: 1.37 cf/sk

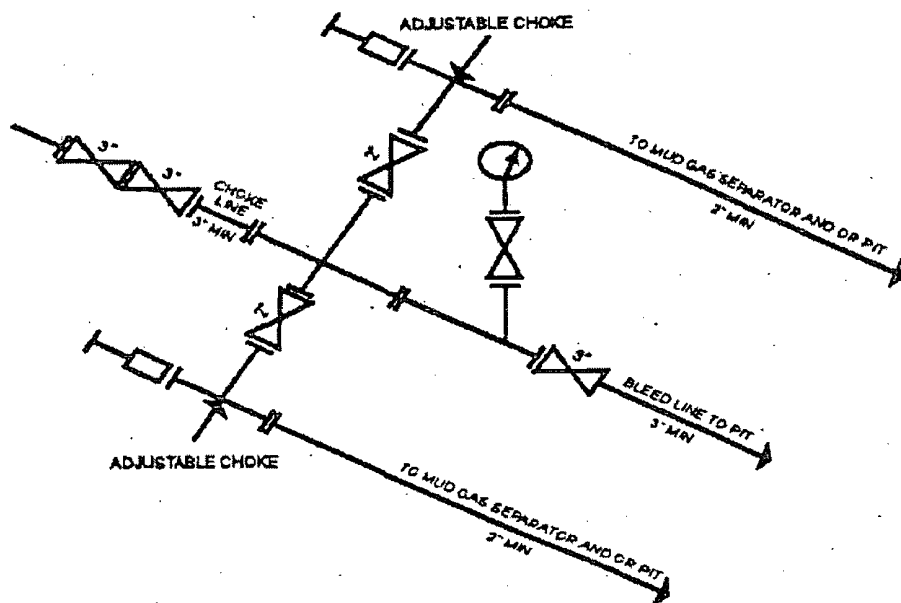
ACTUAL CEMENT VOLUMES WILL BE ADJUSTED BASED ON FLUID CALIPER AND CALIPER LOG DATA.

11" x 3,000 psi BOP Stack



13-5/8" 3K Annular





3M CHOKE MANIFOLD EQUIPMENT - CONFIGURATION OF CHOKES MAY VARY
 [54 FR 39528, Sept. 27, 1989]

Devon Energy Production Co., LP
NM-012121: Cotton Draw Unit #121H
API: 30-015-37409
Eddy County, New Mexico

RE: Changes to the APD – Conditions of Approval

Hole size change and cement program changes approved.

1. All blowout preventer (BOP) and related equipment (BOPE) shall comply with well control requirements as described in Onshore Oil and Gas Order No. 2 and API RP 53 Sec. 17.
2. Minimum working pressure of the blowout preventer (BOP) and related equipment (BOPE) required for drilling below the surface casing shoe shall be **2000 (2M)** psi.
 - a. **For surface casing only:** If the BOP/BOPE is to be tested against casing, the wait on cement (WOC) time for that casing is to be met (see WOC statement at start of casing section). Independent service company required.
3. Minimum working pressure of the blowout preventer (BOP) and related equipment (BOPE) required for drilling below the **9-5/8 inch** intermediate casing shoe shall be **3000 (3M)** psi. **5M system tested as a 3M.**
4. The appropriate BLM office shall be notified a minimum of 4 hours in advance for a representative to witness the tests.
 - a. In a water basin, for all casing strings utilizing slips, these are to be set as soon as the crew and rig are ready and any fallback cement remediation has been done. The casing cut-off and BOP installation can be initiated four hours after installing the slips, which will be approximately six hours after bumping the plug. For those casing strings not using slips or where the float does not hold, the minimum wait time before cut-off is eight hours after bumping the plug or when the cement reaches 500 psi compressive strength (including lead when specified), whichever is greater. BOP/BOPE testing can begin after the above conditions are satisfied.
 - b. The tests shall be done by an independent service company utilizing a test plug **not a cup or J-packer**. The operator also has the option of utilizing an independent tester to test without a plug (i.e. against the casing) pursuant to Onshore Order 2 with the pressure not to exceed 70% of the burst rating for the casing. Any test against the casing must meet the WOC time for water basin (18 hours) or potash (24 hours) prior to initiating the test.
 - c. The tests shall be done by an independent service company utilizing a test plug.
 - d. The results of the test shall be reported to the appropriate BLM office.

- e. All tests are required to be recorded on a calibrated test chart. **A copy of the BOP/BOPE test chart and a copy of independent service company test will be submitted to the appropriate BLM office.**
- f. The BOP/BOPE test shall include a low pressure test from 250 to 300 psi. The test will be held for a minimum of 10 minutes if test is done with a test plug and 30 minutes without a test plug.

DHW 091010