

Well: Shell State # 1

Field: Grayburg Jackson

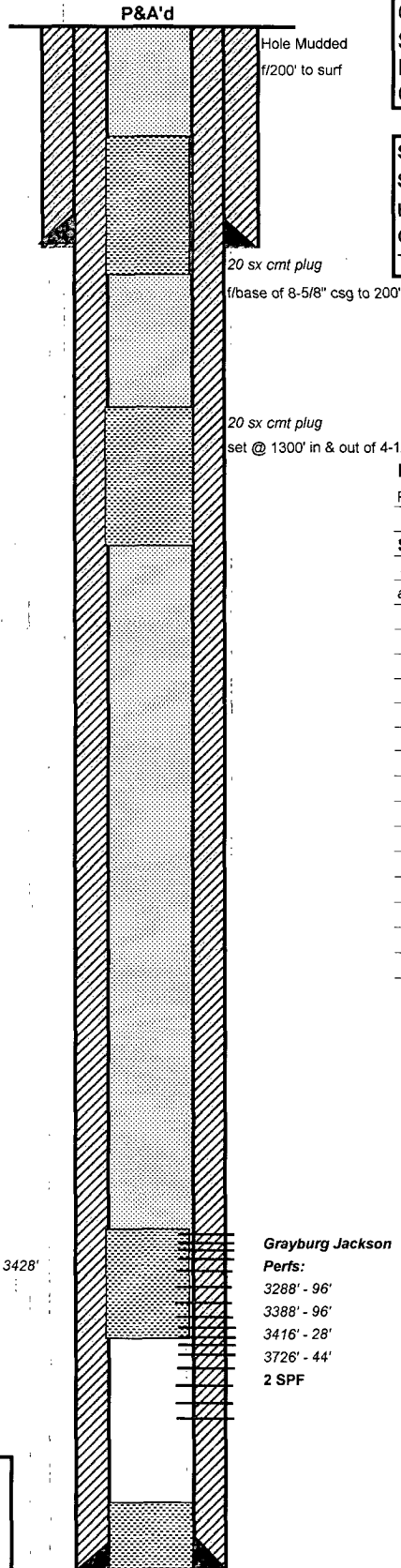
Reservoir: Grayburg -Jackson

Location:
 330' FNL & 330' FEL
 Section: 16
 Township: 17S
 Range: 31E Unit: A
 County: Eddy State: NM

Elevations:
 GL:
 KB:
 DF: 3876'

Log Formation Tops	
Base/Salt	
Yates	
Seven Rivers	2190'
Queen	2730'
Grayburg	3160'
San Andres	3500'
Glorieta	
Tubb	
Abo	
Wolfcamp	
Strawn	
Atoka	
Morrow	

Current Wellbore Diagram



Well ID Info:
 Chevno: FC5808
 API No: 30-015-05166
 Operator: Kersey & Company
 Spud Date: 7-15-60
 Rig Released:
 Compl. Date: 9-25-60

Surface Csg: 8-5/8", 28#
Set: @ 677' w/ 50 sx cmt
Hole Size: 10" to 677'
Circ: Yes **TOC:** Surface
TOC By: Circulation

Initial Completion:
 Perfs: 3726' - 44', 2 SPF, Trt w/ 380 bbis gelled oil, slick oil & 40,000# sd.

Subsequent Work
 5-25-65: P&A'd, as shown on diagram. Hole was mudded between all plugs and the marker set in cmt @ the surface.

Prod. Csg: 4-1/2", 9.5# csg
Set: @ 3775' w/325 sx cmt
Hole Size: 8" to 3778'
Circ: yes **TOC:** Surface
TOC By: Circulation

TD: 3778' PBD:

Updated: 1-5-11

By: Chay