

DISTRICT I
1625 N. FRENCH DR., HOBBS, NM 88240

DISTRICT II
1301 W. GRAND AVENUE, ARTESIA, NM 88210

DISTRICT III
1000 RIO BRAZOS RD., AZTEC, NM 87410

DISTRICT IV
11885 S. ST. FRANCIS DR., SANTA FE, NM 87505

State of New Mexico
Energy, Minerals and Natural Resources Department

OIL CONSERVATION DIVISION

11885 SOUTH ST. FRANCIS DR.
Santa Fe, New Mexico 87505

Form C-102

Revised October 12, 2005
Submit to Appropriate District Office
State Lease - 4 Copies
Fee Lease - 3 Copies

WELL LOCATION AND ACREAGE DEDICATION PLAT

☐ AMENDED REPORT

API Number 30-015-37863	Pool Code 97558	Pool Name GJ; 7Rvs-Qn-GB-Glorieta-Yeso
Property Code 302497	Property Name GJ WEST COOP UNIT	Well Number 308
OGRID No. 229137	Operator Name COG OPERATING, LLC	Elevation 3611'

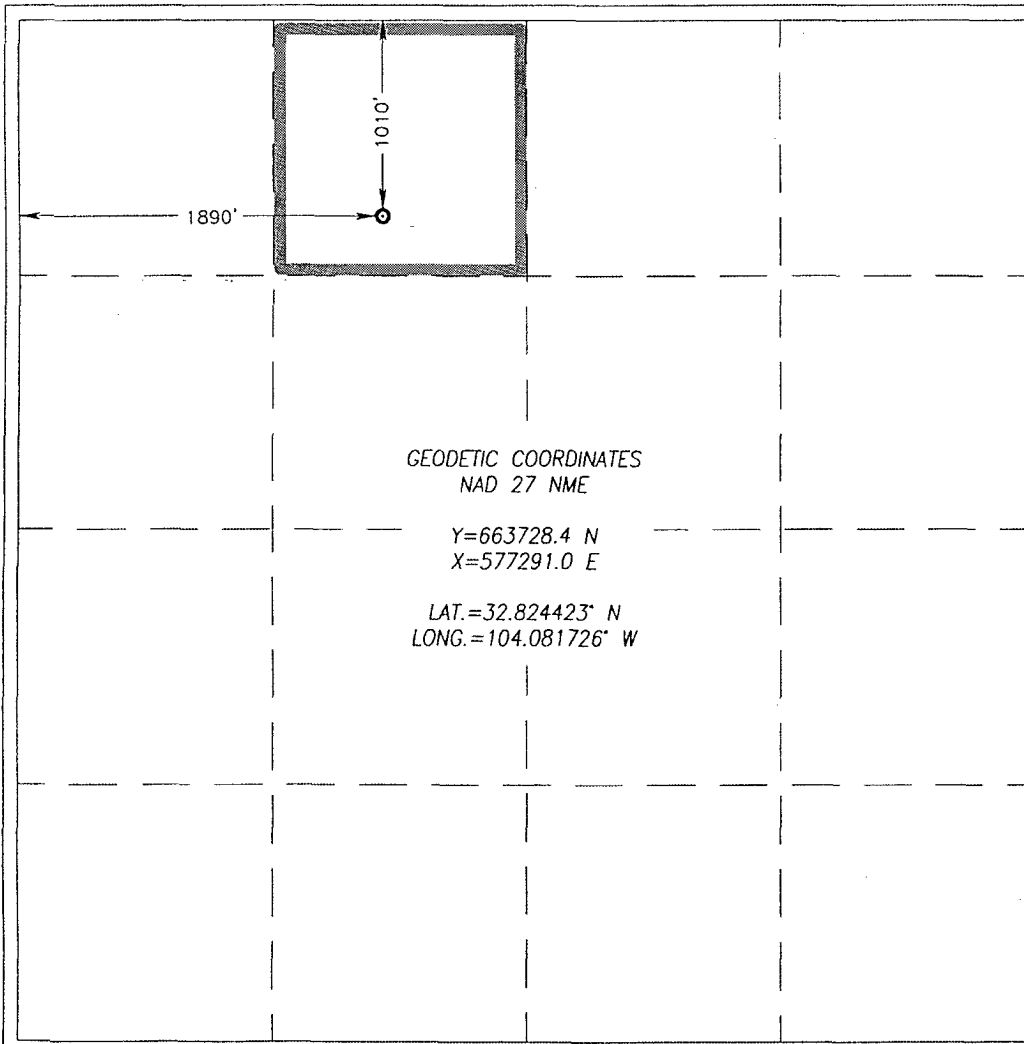
Surface Location

UL or lot No. C	Section 21	Township 17-S	Range 29-E	Lot Idn	Feet from the 1010	North/South line NORTH	Feet from the 1890	East/West line WEST	County EDDY
--------------------	---------------	------------------	---------------	---------	-----------------------	---------------------------	-----------------------	------------------------	----------------

Bottom Hole Location If Different From Surface

UL or lot No.	Section	Township	Range	Lot Idn	Feet from the	North/South line	Feet from the	East/West line	County	
Dedicated Acres 40					Joint or Infill					Consolidation Code
					Order No. NSL-6201					

NO ALLOWABLE WILL BE ASSIGNED TO THIS COMPLETION UNTIL ALL INTERESTS HAVE BEEN CONSOLIDATED
OR A NON-STANDARD UNIT HAS BEEN APPROVED BY THE DIVISION



OPERATOR CERTIFICATION

I hereby certify that the information herein is true and complete to the best of my knowledge and belief, and that this organization either owns a working interest or unleased mineral interest in the land including the proposed bottom hole location or has a right to drill this well at this location pursuant to a contract with an owner of such mineral or working interest, or to a voluntary pooling agreement or a compulsory pooling order heretofore entered by the division.

Natalie Krueger 10/22/2010
Signature Date
Natalie Krueger
Printed Name

SURVEYOR CERTIFICATION

I hereby certify that the well location shown on this plat was plotted from field notes of actual surveys made by me or under my supervision, and that the same is true and correct to the best of my belief.

GARY G. EIDSON APR 29 2010 DSS
Date Surveyed
Signature & Seal of Professional Surveyor
Gary G. Eidson 5/6/10
10.11.0617

Certificate No. GARY G. EIDSON 12641
RONALD J. EIDSON 3239