

UNITED STATES
DEPARTMENT OF THE INTERIOR
BUREAU OF LAND MANAGEMENT

FORM APPROVED
OMB NO. 1004-0137
Expires: July 31, 2010

WELL COMPLETION OR RECOMPLETION REPORT AND LOG

a. Type of Well: Oil Well Gas Well Dry Other
 b. Type of Completion: New Well Work Over Deepen Plug Back Diff. Resvr.,
 Other: _____

2. Name of Operator: **BOPCO, L.P.**

3. Address: **P O Box 2760 Midland Tx 79702**

3a. Phone No. (include area code): **(432)683-2277**

4. Location of Well (Report location clearly and in accordance with Federal requirements)*
 At surface **G; Sec. 28; T24S; R31S; 2200' FNL 2030' FEL N 32.189406 Long W 1033780289**

At top prod. interval reported below

At total depth **E; Sec. 21; T24S; R31E; 2150' N 964' W**

14. Date Spudded **07/20/2010** 15. Date T.D. Reached **08/28/2010**

16. Date Completed **10/31/2010**
 D & A Ready to Prod.

17. Elevations (DF, RKB, RT, GL)*
KB 3,507'; GR 3,488'

18. Total Depth: MD **13,767**
 TVD **8,147.65**

19. Plug Back T.D.: MD
 TVD

20. Depth Bridge Plug Set: MD
 TVD

21. Type Electric & Other Mechanical Logs Run (Submit copy of each)

22. Was well cored? No Yes (Submit analysis)
 Was DST run? No Yes (Submit report)
 Directional Survey? No Yes (Submit copy)

23. Casing and Liner Record (Report all strings set in well)

Hole Size	Size/Grade	Wt. (#/ft.)	Top (MD)	Bottom (MD)	Stage Cementer Depth	No. of Sks. & Type of Cement	Slurry Vol. (BBL)	Cement Top*	Amount Pulled
17 1/2	13 3/8 H40	48		967		900 CC	293	Surface	
12 1/4	9 5/8 J55	40		4,374		1,450 PozC	601.5	Surface	
8 3/4	7 N80	26		8,670	5,027	500 LiteCrete	173.2	5,027	1st Stage
8 3/4	7 N80	26		5,027		675 LiteCrete	238	Surface	2nd Stage
6 1/8	4 1/2 L&TC11.6		8,485	13,717					

24. Tubing Record

Size	Depth Set (MD)	Packer Depth (MD)	Size	Depth Set (MD)	Packer Depth (MD)	Size	Depth Set (MD)	Packer Depth (MD)
2 7/8	7,643	None						

25. Producing Intervals

Formation	Top	Bottom	Perforated Interval	Size	No. Holes	Perf. Status
A) Delaware Mountain Group	4,358'	8,147.65 TVD	8,745 - 13,708'			Producing
B)			Pre-Perfd			
C)						
D)						

27. Acid, Fracture, Treatment, Cement Squeeze, etc.

Depth Interval	Amount and Type of Material
8,745 - 13,708	18 Stages; 101,606 gals. 25 #Linear; 1,099,528 gals YF125ST; 2,325,232 # 16/30 Ottawa

28. Production - Interval A

Date First Produced	Test Date	Hours Tested	Test Production	Oil BBL	Gas MCF	Water BBL	Oil Gravity Corr. API	Gas Gravity	Production Method
11/5/10	11/14/10	24	→	780	641	1372	42.5	0.803	Pump; Global. 1750
Choke Size	Tbg. Press. Flwg. SI	Csg. Press.	24 Hr. Rate	Oil BBL	Gas MCF	Water BBL	Gas/Oil Ratio	Well Status	
48/64	440	350	→				822	Producing	

28a. Production - Interval B

Date First Produced	Test Date	Hours Tested	Test Production	Oil BBL	Gas MCF	Water BBL	Oil Gravity Corr. API	Gas Gravity	Production Method
			→						
Choke Size	Tbg. Press. Flwg. SI	Csg. Press.	24 Hr. Rate	Oil BBL	Gas MCF	Water BBL	Gas/Oil Ratio	Well Status	
			→						

RECEIVED
 DEC 22 2010
 ANIMOCO ARTESIA

ACCEPTED FOR RECORD
 DEC 19 2010
 J. [Signature]
 BUREAU OF LAND MANAGEMENT
 CARLSBAD FIELD OFFICE

*(See instructions and spaces for additional data on page 2)

dm

28b. Production - Interval C

Date First Produced	Test Date	Hours Tested	Test Production →	Oil BBL	Gas MCF	Water BBL	Oil Gravity Corr. API	Gas Gravity	Production Method
Choke Size	Tbg. Press. Flwg. SI	Csg. Press.	24 Hr. Rate →	Oil BBL	Gas MCF	Water BBL	Gas/Oil Ratio	Well Status	

28c. Production - Interval D

Date First Produced	Test Date	Hours Tested	Test Production →	Oil BBL	Gas MCF	Water BBL	Oil Gravity Corr. API	Gas Gravity	Production Method
Choke Size	Tbg. Press. Flwg. SI	Csg. Press.	24 Hr. Rate →	Oil BBL	Gas MCF	Water BBL	Gas/Oil Ratio	Well Status	

29. Disposition of Gas (Solid, used for fuel, vented, etc.)

Sold

30. Summary of Porous Zones (Include Aquifers):

Show all important zones of porosity and contents thereof: Cored intervals and all drill-stem tests, including depth interval tested, cushion used, time tool open, flowing and shut-in pressures and recoveries.

31. Formation (Log) Markers

Formation	Top	Bottom	Descriptions, Contents, etc.	Name	Top
					Meas. Depth
Bell Canyon	4406	5243	Sandstone	Rustler	590
Cherry Canyon	5244	6545	Sandstone	Salt	959
Brush Canyon	6546	N. Logged	Sandstone	Base/Salt	4140
				Lamar	4358
				Bell Canyon	4406
				Cherry Canyon	5244
				Lo Cherry Canyon	6482
				Brushy Canyon	6546

32. Additional remarks (include plugging procedure):

33. Indicate which items have been attached by placing a check in the appropriate boxes:

- Electrical/Mechanical Logs (1 full set req'd.)
 Geologic Report
 DST Report
 Directional Survey
 Sundry Notice for plugging and cement verification
 Core Analysis
 Other:

34. I hereby certify that the foregoing and attached information is complete and correct as determined from all available records (see attached instructions)*

Name (please print) Sandra J. Belt ext. 149 Title Sr. Regulatory Clerk
 Signature Sandra J. Belt Date 12/07/2010

Title 18 U.S.C. Section 1001 and Title 43 U.S.C. Section 1212, make it a crime for any person knowingly and willfully to make to any department or agency of the United States any false, fictitious or fraudulent statements or representations as to any matter within its jurisdiction.

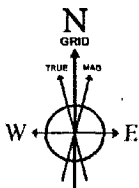
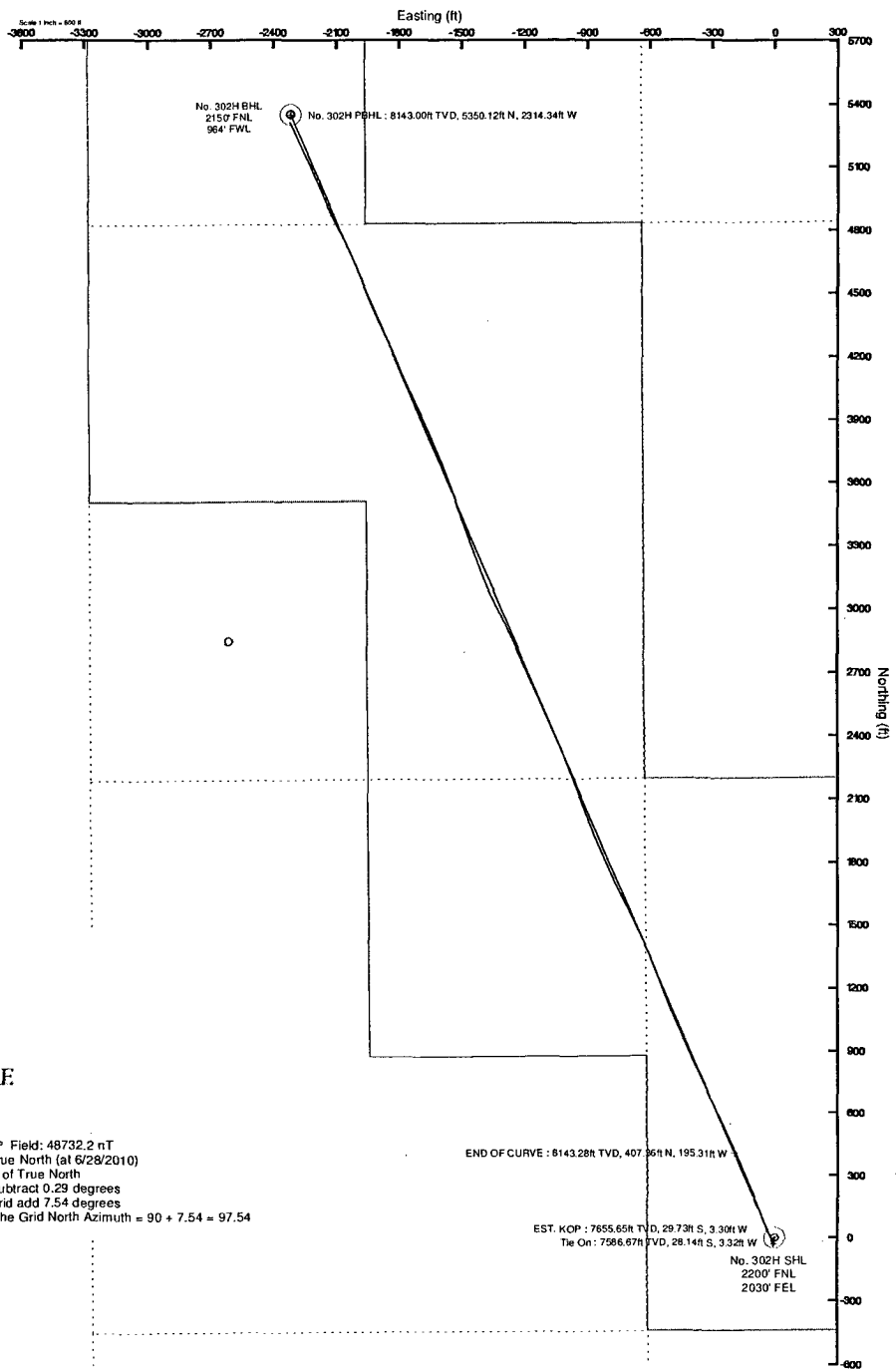
BOPCO, L.P.

Location: Eddy County, NM
 Field: Poker Lake Unit
 Facility: Poker Lake Unit No. 302H

Slot: No. 302H SHL
 Well: No. 302H
 Wellbore: No. 302H PWB

Well Profile Data

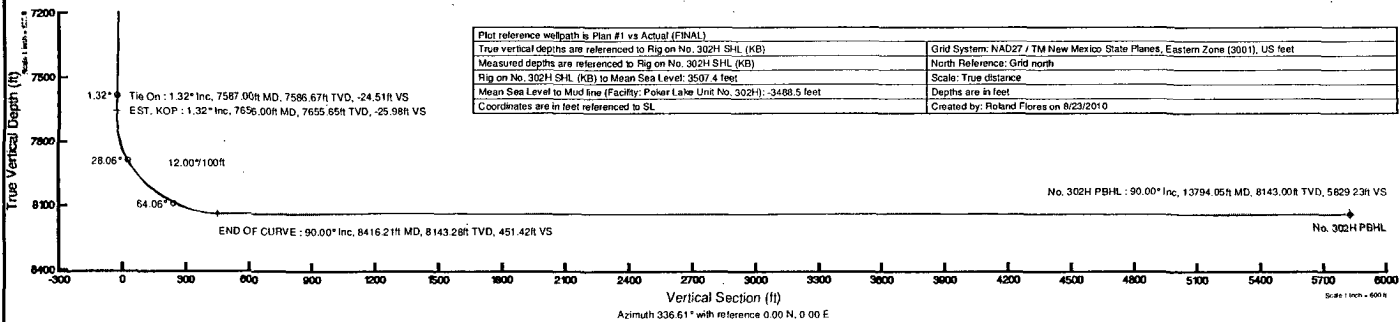
Design Comment	MD (ft)	Inc (°)	Az (°)	TVD (ft)	Local N (ft)	Local E (ft)	DLS (%/100ft)	VS (ft)
Tie On	7587.00	1.320	179.010	7586.67	-28.14	-3.32	0.00	-24.51
EST. KOP	7656.00	1.320	179.010	7655.65	-29.73	-3.30	0.00	-25.98
END OF CURVE	8416.21	90.003	336.794	8143.28	407.36	-195.31	12.00	451.42
No. 302H PBHL	13794.05	90.003	336.794	8143.00	5350.12	-2314.34	0.00	5829.23



BGGM (1945.0 to 2011.0) Dip: 60.15° Field: 48732.2 nT
 Magnetic North is 7.83 degrees East of True North (at 6/28/2010)
 Grid North is 0.29 degrees East of True North

To correct azimuth from True to Grid subtract 0.29 degrees
 To correct azimuth from Magnetic to Grid add 7.54 degrees

For example: if the Magnetic North Azimuth = 90 degs, then the Grid North Azimuth = 90 + 7.54 = 97.54





Actual Wellpath Report

No. 302H AWP

Page 1 of 7

30-045-37647



REFERENCE WELLPATH IDENTIFICATION

Operator	BOPCO, L.P.	Slot	No. 302H SHL
Area	Eddy County, NM	Well	No. 302H
Field	Poker Lake Unit	Wellbore	No. 302H AWB
Facility	Poker Lake Unit No. 302H		

REPORT SETUP INFORMATION

Projection System	NAD27 / TM New Mexico State Planes, Eastern Zone (3001), US feet	Software System	WellArchitect® 2.0
North Reference	Grid	User	Victor Hernandez
Scale	0.999943	Report Generated	8/23/2010 at 8:56:27 AM
Convergence at slot	0.29° East	Database/Source file	WA_Midland/No._302H_AWB.xml

WELLPATH LOCATION

	Local coordinates		Grid coordinates		Geographic coordinates	
	North[ft]	East[ft]	Easting[USft]	Northing[USft]	Latitude	Longitude
Slot Location	0.00	0.00	671088.73	433066.10	32°11'21.863"N	103°46'49.039"W
Facility Reference Pt			671088.73	433066.10	32°11'21.863"N	103°46'49.039"W
Field Reference Pt			630272.49	405347.85	32°06'49.387"N	103°54'45.266"W

WELLPATH DATUM

Calculation method	Minimum curvature	Rig on No. 302H SHL (KB) to GL	18.90ft
Horizontal Reference Pt	SL	Rig on No. 302H SHL (KB) to Mean Sea Level	3507.40ft
Vertical Reference Pt	Rig on No. 302H SHL (KB)	GL to Mud Line (Facility)	0.00ft
MD Reference Pt	Rig on No. 302H SHL (KB)	Section Origin	N 0.00, E 0.00 ft
Field Vertical Reference	Mean Sea Level	Section Azimuth	336.61°



Actual Wellpath Report

No. 302H AWP

Page 2 of 7



REFERENCE WELLPATH IDENTIFICATION

Operator	BOPCO, L.P.	Slot	No. 302H SHL
Area	Eddy County, NM	Well	No. 302H
Field	Poker Lake Unit	Wellbore	No. 302H AWP
Facility	Poker Lake Unit No. 302H		

WELLPATH DATA (163 stations)

MD [ft]	Inclination [°]	Azimuth [°]	TVD [ft]	Vert Sect [ft]	North [ft]	East [ft]	Grid East [srv ft]	Grid North [srv ft]	Latitude	Longitude	DLS [°/100ft]
0.00	0.000	329.790	0.00	0.00	0.00	0.00	671088.73	433066.10	32°11'21.863"N	103°46'49.039"W	0.00
100.00	0.170	329.790	100.00	0.15	0.13	-0.07	671088.66	433066.23	32°11'21.865"N	103°46'49.040"W	0.17
200.00	0.250	2.150	200.00	0.49	0.47	-0.14	671088.59	433066.57	32°11'21.868"N	103°46'49.041"W	0.14
300.00	0.320	357.380	300.00	0.95	0.97	-0.15	671088.58	433067.07	32°11'21.873"N	103°46'49.041"W	0.07
400.00	0.080	3.220	400.00	1.27	1.32	-0.15	671088.58	433067.42	32°11'21.877"N	103°46'49.041"W	0.24
500.00	0.550	105.390	500.00	1.03	1.26	0.31	671089.04	433067.36	32°11'21.876"N	103°46'49.035"W	0.57
600.00	0.410	123.610	599.99	0.43	0.94	1.07	671089.80	433067.04	32°11'21.873"N	103°46'49.026"W	0.21
700.00	0.280	166.890	699.99	-0.11	0.50	1.43	671090.16	433066.60	32°11'21.868"N	103°46'49.022"W	0.28
800.00	0.220	174.380	799.99	-0.53	0.07	1.50	671090.23	433066.17	32°11'21.864"N	103°46'49.022"W	0.07
900.00	0.450	244.970	899.99	-0.72	-0.29	1.16	671089.89	433065.81	32°11'21.861"N	103°46'49.025"W	0.43
1000.00	0.630	249.290	999.98	-0.71	-0.65	0.29	671089.02	433065.45	32°11'21.857"N	103°46'49.036"W	0.18
1100.00	0.710	242.620	1099.98	-0.73	-1.13	-0.77	671087.96	433064.97	32°11'21.852"N	103°46'49.048"W	0.11
1200.00	0.570	248.970	1199.97	-0.75	-1.59	-1.79	671086.94	433064.51	32°11'21.848"N	103°46'49.060"W	0.16
1300.00	0.560	251.530	1299.97	-0.69	-1.92	-2.71	671086.02	433064.18	32°11'21.845"N	103°46'49.071"W	0.03
1400.00	0.670	257.080	1399.96	-0.54	-2.21	-3.75	671084.98	433063.89	32°11'21.842"N	103°46'49.083"W	0.12
1500.00	0.440	252.030	1499.96	-0.40	-2.46	-4.68	671084.05	433063.64	32°11'21.839"N	103°46'49.094"W	0.23
1600.00	0.420	254.590	1599.95	-0.31	-2.67	-5.40	671083.33	433063.43	32°11'21.837"N	103°46'49.102"W	0.03
1700.00	0.190	267.250	1699.95	-0.20	-2.78	-5.92	671082.81	433063.32	32°11'21.836"N	103°46'49.108"W	0.24
1800.00	0.230	230.640	1799.95	-0.20	-2.91	-6.24	671082.49	433063.19	32°11'21.835"N	103°46'49.112"W	0.14
1900.00	0.180	196.050	1899.95	-0.37	-3.19	-6.44	671082.29	433062.91	32°11'21.832"N	103°46'49.114"W	0.13
2000.00	0.150	221.980	1999.95	-0.55	-3.44	-6.57	671082.16	433062.66	32°11'21.830"N	103°46'49.116"W	0.08
2100.00	0.040	356.330	2099.95	-0.57	-3.50	-6.66	671082.07	433062.60	32°11'21.829"N	103°46'49.117"W	0.18
2200.00	0.090	183.220	2199.95	-0.61	-3.55	-6.67	671082.06	433062.55	32°11'21.829"N	103°46'49.117"W	0.13
2300.00	0.080	269.650	2299.95	-0.65	-3.62	-6.74	671081.99	433062.48	32°11'21.828"N	103°46'49.118"W	0.12
2400.00	0.040	130.710	2399.95	-0.65	-3.65	-6.78	671081.95	433062.45	32°11'21.828"N	103°46'49.118"W	0.11
2500.00	0.110	238.560	2499.95	-0.70	-3.72	-6.84	671081.89	433062.38	32°11'21.827"N	103°46'49.119"W	0.13
2600.00	0.160	197.260	2599.95	-0.82	-3.90	-6.96	671081.77	433062.20	32°11'21.825"N	103°46'49.120"W	0.11
2700.00	0.130	223.140	2699.95	-0.97	-4.12	-7.08	671081.65	433061.98	32°11'21.823"N	103°46'49.122"W	0.07
2800.00	0.280	212.880	2799.95	-1.15	-4.41	-7.29	671081.44	433061.69	32°11'21.820"N	103°46'49.124"W	0.15
2900.00	0.460	219.600	2899.95	-1.47	-4.92	-7.68	671081.05	433061.18	32°11'21.815"N	103°46'49.129"W	0.18



Actual Wellpath Report

No. 302H AWP

Page 3 of 7



REFERENCE WELLPATH IDENTIFICATION

Operator	BOPCO, L.P.	Slot	No. 302H SHL
Area	Eddy County, NM	Well	No. 302H
Field	Poker Lake Unit	Wellbore	No. 302H AWB
Facility	Poker Lake Unit No. 302H		

WELLPATH DATA (163 stations)

MD [ft]	Inclination [°]	Azimuth [°]	TVD [ft]	Vert Sect [ft]	North [ft]	East [ft]	Grid East [srv ft]	Grid North [srv ft]	Latitude	Longitude	DLS [°/100ft]
3000.00	0.900	219.600	2999.94	-2.01	-5.84	-8.44	671080.29	433060.26	32°11'21.806"N	103°46'49.137"W	0.44
3100.00	0.720	207.940	3099.93	-2.76	-7.00	-9.23	671079.50	433059.10	32°11'21.795"N	103°46'49.147"W	0.24
3200.00	0.950	200.220	3199.92	-3.75	-8.33	-9.81	671078.92	433057.77	32°11'21.782"N	103°46'49.154"W	0.26
3300.00	0.690	187.980	3299.91	-4.86	-9.70	-10.18	671078.55	433056.40	32°11'21.768"N	103°46'49.158"W	0.31
3400.00	0.640	191.520	3399.90	-5.84	-10.85	-10.38	671078.35	433055.25	32°11'21.757"N	103°46'49.160"W	0.06
3500.00	0.230	70.940	3499.90	-6.31	-11.33	-10.30	671078.43	433054.77	32°11'21.752"N	103°46'49.160"W	0.78
3600.00	0.420	77.440	3599.90	-6.39	-11.18	-9.75	671078.98	433054.92	32°11'21.753"N	103°46'49.153"W	0.19
3700.00	0.640	87.260	3699.89	-6.66	-11.08	-8.84	671079.89	433055.02	32°11'21.754"N	103°46'49.142"W	0.24
3800.00	0.970	97.620	3799.88	-7.29	-11.16	-7.44	671081.29	433054.94	32°11'21.753"N	103°46'49.126"W	0.36
3900.00	0.930	103.610	3899.87	-8.22	-11.47	-5.81	671082.92	433054.63	32°11'21.750"N	103°46'49.107"W	0.11
4000.00	0.950	102.630	3999.86	-9.19	-11.84	-4.21	671084.52	433054.26	32°11'21.747"N	103°46'49.089"W	0.03
4100.00	0.420	83.950	4099.85	-9.79	-11.98	-3.04	671085.69	433054.12	32°11'21.745"N	103°46'49.075"W	0.57
4200.00	0.540	96.990	4199.84	-10.14	-12.00	-2.21	671086.52	433054.10	32°11'21.745"N	103°46'49.065"W	0.16
4300.00	0.610	105.020	4299.84	-10.71	-12.20	-1.23	671087.50	433053.91	32°11'21.743"N	103°46'49.054"W	0.11
4400.00	0.550	118.630	4399.83	-11.42	-12.56	-0.29	671088.44	433053.54	32°11'21.739"N	103°46'49.043"W	0.15
4500.00	0.670	105.990	4499.83	-12.16	-12.95	0.69	671089.42	433053.15	32°11'21.735"N	103°46'49.032"W	0.18
4600.00	0.490	106.440	4599.82	-12.81	-13.24	1.66	671090.39	433052.86	32°11'21.732"N	103°46'49.020"W	0.18
4700.00	0.600	99.140	4699.82	-13.36	-13.44	2.59	671091.32	433052.66	32°11'21.730"N	103°46'49.010"W	0.13
4800.00	0.460	108.800	4799.82	-13.92	-13.65	3.49	671092.22	433052.45	32°11'21.728"N	103°46'48.999"W	0.17
4900.00	0.530	103.020	4899.81	-14.46	-13.89	4.32	671093.05	433052.21	32°11'21.726"N	103°46'48.990"W	0.09
5000.00	0.290	103.580	4999.81	-14.89	-14.05	5.02	671093.74	433052.05	32°11'21.724"N	103°46'48.981"W	0.24
5100.00	0.220	138.640	5099.81	-15.22	-14.25	5.39	671094.12	433051.85	32°11'21.722"N	103°46'48.977"W	0.17
5200.00	0.130	177.450	5199.81	-15.51	-14.51	5.52	671094.25	433051.59	32°11'21.720"N	103°46'48.976"W	0.14
5300.00	0.050	326.400	5299.81	-15.57	-14.59	5.50	671094.23	433051.51	32°11'21.719"N	103°46'48.976"W	0.17
5400.00	0.180	333.730	5399.81	-15.37	-14.41	5.41	671094.14	433051.69	32°11'21.721"N	103°46'48.977"W	0.13
5500.00	0.210	320.850	5499.81	-15.04	-14.13	5.22	671093.95	433051.97	32°11'21.723"N	103°46'48.979"W	0.05
5600.00	0.310	321.410	5599.81	-14.60	-13.77	4.94	671093.67	433052.33	32°11'21.727"N	103°46'48.982"W	0.10
5700.00	0.300	323.570	5699.80	-14.09	-13.35	4.61	671093.34	433052.75	32°11'21.731"N	103°46'48.986"W	0.02
5800.00	0.220	344.360	5799.80	-13.64	-12.96	4.41	671093.14	433053.14	32°11'21.735"N	103°46'48.988"W	0.12
5900.00	0.250	19.280	5899.80	-13.29	-12.57	4.43	671093.16	433053.53	32°11'21.739"N	103°46'48.988"W	0.14



Actual Wellpath Report

No. 302H AWP

Page 4 of 7



REFERENCE WELLPATH IDENTIFICATION

Operator	BOPCO, L.P.	Slot	No. 302H SHL
Area	Eddy County, NM	Well	No. 302H
Field	Poker Lake Unit	Wellbore	No. 302H AWB
Facility	Poker Lake Unit No. 302H		

WELLPATH DATA (163 stations)

MD [ft]	Inclination [°]	Azimuth [°]	TVD [ft]	Vert Sect [ft]	North [ft]	East [ft]	Grid East [srv ft]	Grid North [srv ft]	Latitude	Longitude	DLS [°/100ft]
6000.00	0.250	252.160	5999.80	-13.11	-12.43	4.29	671093.02	433053.67	32°11'21.740"N	103°46'48.990"W	0.45
6100.00	0.270	252.740	6099.80	-13.06	-12.56	3.86	671092.59	433053.54	32°11'21.739"N	103°46'48.995"W	0.02
6200.00	0.350	244.360	6199.80	-13.05	-12.77	3.36	671092.09	433053.33	32°11'21.737"N	103°46'49.001"W	0.09
6300.00	0.340	234.010	6299.80	-13.13	-13.07	2.84	671091.57	433053.03	32°11'21.734"N	103°46'49.007"W	0.06
6400.00	0.370	242.370	6399.80	-13.22	-13.40	2.32	671091.05	433052.70	32°11'21.731"N	103°46'49.013"W	0.06
6500.00	0.480	235.150	6499.79	-13.32	-13.79	1.69	671090.42	433052.31	32°11'21.727"N	103°46'49.020"W	0.12
6600.00	0.560	237.300	6599.79	-13.48	-14.29	0.93	671089.66	433051.81	32°11'21.722"N	103°46'49.029"W	0.08
6700.00	0.840	231.970	6699.78	-13.75	-15.00	-0.06	671088.67	433051.10	32°11'21.715"N	103°46'49.041"W	0.29
6800.00	0.720	223.930	6799.77	-14.18	-15.91	-1.07	671087.66	433050.19	32°11'21.706"N	103°46'49.052"W	0.16
6900.00	0.770	200.700	6899.76	-14.90	-16.99	-1.74	671086.99	433049.11	32°11'21.695"N	103°46'49.060"W	0.30
7000.00	0.770	203.120	6999.75	-15.85	-18.24	-2.25	671086.48	433047.86	32°11'21.683"N	103°46'49.066"W	0.03
7100.00	0.810	200.400	7099.75	-16.82	-19.52	-2.76	671085.97	433046.58	32°11'21.670"N	103°46'49.072"W	0.05
7200.00	0.850	193.610	7199.73	-17.92	-20.90	-3.18	671085.55	433045.20	32°11'21.657"N	103°46'49.077"W	0.11
7300.00	0.920	187.450	7299.72	-19.20	-22.42	-3.46	671085.28	433043.68	32°11'21.642"N	103°46'49.081"W	0.12
7400.00	1.150	179.030	7399.71	-20.82	-24.22	-3.54	671085.19	433041.88	32°11'21.624"N	103°46'49.082"W	0.28
7500.00	1.180	174.550	7499.69	-22.73	-26.25	-3.43	671085.30	433039.86	32°11'21.604"N	103°46'49.080"W	0.10
7587.00	1.320	179.010	7586.67	-24.51	-28.14	-3.32	671085.41	433037.96	32°11'21.585"N	103°46'49.079"W	0.20
7617.00	1.300	181.800	7616.66	-25.13	-28.82	-3.33	671085.40	433037.28	32°11'21.578"N	103°46'49.079"W	0.22
7649.00	2.500	227.100	7648.64	-25.69	-29.66	-3.85	671084.88	433036.44	32°11'21.570"N	103°46'49.086"W	5.73
7681.00	1.100	297.300	7680.63	-25.69	-30.00	-4.64	671084.09	433036.11	32°11'21.567"N	103°46'49.095"W	7.39
7711.00	3.500	332.900	7710.60	-24.55	-29.05	-5.31	671083.42	433037.05	32°11'21.576"N	103°46'49.103"W	8.94
7742.00	6.800	337.000	7741.47	-21.77	-26.52	-6.46	671082.27	433039.58	32°11'21.601"N	103°46'49.116"W	10.70
7773.00	11.100	333.900	7772.09	-16.95	-22.15	-8.49	671080.24	433043.96	32°11'21.645"N	103°46'49.139"W	13.95
7804.00	15.700	333.500	7802.24	-9.78	-15.71	-11.68	671077.06	433050.39	32°11'21.709"N	103°46'49.176"W	14.84
7835.00	20.000	333.100	7831.74	-0.90	-7.22	-15.95	671072.78	433058.88	32°11'21.793"N	103°46'49.225"W	13.88
7867.00	24.700	333.400	7861.32	11.85	3.64	-21.42	671067.31	433069.74	32°11'21.901"N	103°46'49.288"W	14.69
7899.00	30.000	335.100	7889.74	26.53	16.89	-27.79	671060.95	433082.98	32°11'22.032"N	103°46'49.361"W	16.74
7930.00	33.200	335.400	7916.14	42.77	31.64	-34.58	671054.15	433097.73	32°11'22.178"N	103°46'49.440"W	10.33
7961.00	39.000	338.200	7941.18	61.02	48.43	-41.75	671046.99	433114.52	32°11'22.345"N	103°46'49.522"W	19.45
7993.00	42.600	338.900	7965.40	81.91	67.88	-49.39	671039.35	433133.98	32°11'22.538"N	103°46'49.610"W	11.34



Actual Wellpath Report

No. 302H AWP

Page 5 of 7



REFERENCE WELLPATH IDENTIFICATION

Operator	BOPCO, L.P.	Slot	No. 302H SHL
Area	Eddy County, NM	Well	No. 302H
Field	Poker Lake Unit	Wellbore	No. 302H AWP
Facility	Poker Lake Unit No. 302H		

WELLPATH DATA (163 stations)

MD [ft]	Inclination [°]	Azimuth [°]	TVD [ft]	Vert Sect [ft]	North [ft]	East [ft]	Grid East [srv ft]	Grid North [srv ft]	Latitude	Longitude	DLS [°/100ft]
8025.00	46.300	338.900	7988.24	104.30	88.79	-57.45	671031.28	433154.88	32°11'22.745"N	103°46'49.702"W	11.56
8056.00	49.100	339.000	8009.10	127.21	110.18	-65.69	671023.05	433176.28	32°11'22.957"N	103°46'49.797"W	9.04
8086.00	52.000	338.500	8028.16	150.35	131.77	-74.08	671014.65	433197.86	32°11'23.171"N	103°46'49.893"W	9.75
8118.00	55.600	338.000	8047.05	176.16	155.75	-83.65	671005.08	433221.84	32°11'23.409"N	103°46'50.003"W	11.32
8149.00	59.600	337.200	8063.66	202.33	179.94	-93.63	670995.11	433246.03	32°11'23.649"N	103°46'50.118"W	13.09
8180.00	62.200	337.400	8078.74	229.41	204.93	-104.08	670984.65	433271.02	32°11'23.897"N	103°46'50.238"W	8.41
8212.00	64.000	337.400	8093.21	257.94	231.27	-115.05	670973.69	433297.36	32°11'24.158"N	103°46'50.364"W	5.62
8243.00	66.100	337.300	8106.29	286.05	257.21	-125.87	670962.87	433323.30	32°11'24.415"N	103°46'50.488"W	6.78
8274.00	68.800	337.500	8118.18	314.67	283.64	-136.87	670951.87	433349.72	32°11'24.677"N	103°46'50.615"W	8.73
8305.00	73.300	337.300	8128.24	343.98	310.70	-148.14	670940.60	433376.78	32°11'24.946"N	103°46'50.744"W	14.53
8337.00	77.500	337.100	8136.31	374.94	339.24	-160.14	670928.60	433405.32	32°11'25.229"N	103°46'50.882"W	13.14
8368.00	83.000	336.900	8141.55	405.48	367.36	-172.07	670916.67	433433.43	32°11'25.507"N	103°46'51.019"W	17.75
8400.00	86.600	335.800	8144.45	437.34	396.54	-184.85	670903.89	433462.62	32°11'25.797"N	103°46'51.166"W	11.76
8431.00	90.400	336.400	8145.26	468.32	424.87	-197.40	670891.34	433490.94	32°11'26.078"N	103°46'51.311"W	12.41
8463.00	91.000	336.100	8144.87	500.32	454.16	-210.29	670878.45	433520.23	32°11'26.368"N	103°46'51.459"W	2.10
8494.00	92.000	335.800	8144.06	531.31	482.46	-222.92	670865.82	433548.53	32°11'26.649"N	103°46'51.604"W	3.37
8525.00	90.400	335.600	8143.41	562.29	510.70	-235.67	670853.07	433576.77	32°11'26.929"N	103°46'51.751"W	5.20
8557.00	88.600	335.500	8143.69	594.29	539.83	-248.92	670839.83	433605.90	32°11'27.218"N	103°46'51.903"W	5.63
8712.00	90.000	334.600	8145.59	749.21	680.35	-314.29	670774.46	433746.41	32°11'28.612"N	103°46'52.655"W	1.07
8807.00	90.400	336.400	8145.25	844.19	766.79	-353.69	670735.06	433832.85	32°11'29.469"N	103°46'53.109"W	1.94
8904.00	90.600	335.500	8144.41	941.18	855.37	-393.22	670695.54	433921.42	32°11'30.348"N	103°46'53.563"W	0.95
9000.00	90.400	336.300	8143.57	1037.17	942.99	-432.41	670656.34	434009.04	32°11'31.217"N	103°46'54.014"W	0.86
9095.00	90.500	335.900	8142.82	1132.16	1029.85	-470.90	670617.86	434095.88	32°11'32.078"N	103°46'54.457"W	0.43
9191.00	90.600	338.100	8141.90	1228.15	1118.20	-508.41	670580.35	434184.24	32°11'32.954"N	103°46'54.888"W	2.29
9286.00	90.400	339.100	8141.07	1323.08	1206.65	-543.07	670545.69	434272.68	32°11'33.831"N	103°46'55.286"W	1.07
9382.00	89.700	339.100	8140.99	1418.99	1296.33	-577.32	670511.45	434362.36	32°11'34.721"N	103°46'55.679"W	0.73
9476.00	89.600	335.300	8141.56	1512.97	1382.97	-613.73	670475.03	434448.99	32°11'35.580"N	103°46'56.098"W	4.04
9573.00	89.700	335.200	8142.16	1609.94	1471.06	-654.34	670434.43	434537.07	32°11'36.453"N	103°46'56.565"W	0.15
9670.00	89.500	334.000	8142.83	1706.88	1558.68	-695.95	670392.82	434624.69	32°11'37.323"N	103°46'57.044"W	1.25
9764.00	89.500	333.900	8143.65	1800.77	1643.13	-737.23	670351.55	434709.13	32°11'38.160"N	103°46'57.519"W	0.11



Actual Wellpath Report

No. 302H AWP

Page 6 of 7



REFERENCE WELLPATH IDENTIFICATION

Operator	BOPCO, L.P.	Slot	No. 302H SHL
Area	Eddy County, NM	Well	No. 302H
Field	Poker Lake Unit	Wellbore	No. 302H AWB
Facility	Poker Lake Unit No. 302H		

WELLPATH DATA (163 stations)

MD [ft]	Inclination [°]	Azimuth [°]	TVD [ft]	Vert Sect [ft]	North [ft]	East [ft]	Grid East [srv ft]	Grid North [srv ft]	Latitude	Longitude	DLS [°/100ft]
9858.00	89.600	335.700	8144.39	1894.72	1728.17	-777.25	670311.53	434794.17	32°11'39.004"N	103°46'57.980"W	1.92
9955.00	90.100	336.700	8144.65	1991.71	1816.92	-816.39	670272.39	434882.92	32°11'39.884"N	103°46'58.430"W	1.15
10052.00	90.100	336.900	8144.48	2088.71	1906.08	-854.60	670234.18	434972.07	32°11'40.768"N	103°46'58.870"W	0.21
10148.00	90.100	339.000	8144.31	2184.68	1995.05	-890.64	670198.14	435061.03	32°11'41.651"N	103°46'59.284"W	2.19
10243.00	90.100	338.900	8144.14	2279.60	2083.71	-924.76	670164.02	435149.69	32°11'42.530"N	103°46'59.675"W	0.11
10340.00	90.000	338.700	8144.06	2376.53	2174.15	-959.84	670128.95	435240.12	32°11'43.426"N	103°47'00.078"W	0.23
10436.00	90.000	338.900	8144.06	2472.46	2263.65	-994.56	670094.23	435329.62	32°11'44.314"N	103°47'00.477"W	0.21
10532.00	89.700	336.600	8144.31	2568.43	2352.50	-1030.90	670057.89	435418.46	32°11'45.195"N	103°47'00.895"W	2.42
10629.00	89.900	336.100	8144.65	2665.43	2441.35	-1069.82	670018.98	435507.30	32°11'46.076"N	103°47'01.342"W	0.56
10726.00	90.100	336.100	8144.65	2762.43	2530.03	-1109.11	669979.68	435595.98	32°11'46.955"N	103°47'01.794"W	0.21
10822.00	90.100	336.100	8144.48	2858.42	2617.80	-1148.01	669940.79	435683.74	32°11'47.826"N	103°47'02.241"W	0.00
10918.00	90.500	333.900	8143.98	2954.38	2704.80	-1188.58	669900.22	435770.74	32°11'48.689"N	103°47'02.708"W	2.33
11013.00	90.800	336.500	8142.90	3049.34	2791.02	-1228.42	669860.38	435856.96	32°11'49.544"N	103°47'03.167"W	2.75
11109.00	89.800	335.500	8142.40	3145.33	2878.72	-1267.46	669821.34	435944.65	32°11'50.414"N	103°47'03.616"W	1.47
11205.00	90.500	333.200	8142.15	3241.25	2965.25	-1309.02	669779.79	436031.18	32°11'51.272"N	103°47'04.094"W	2.50
11302.00	90.200	334.000	8141.55	3338.11	3052.14	-1352.14	669736.67	436118.05	32°11'52.134"N	103°47'04.591"W	0.88
11398.00	90.400	338.300	8141.05	3434.08	3139.92	-1390.95	669697.86	436205.83	32°11'53.005"N	103°47'05.038"W	4.48
11494.00	90.100	339.900	8140.63	3529.99	3229.60	-1425.20	669663.62	436295.50	32°11'53.894"N	103°47'05.431"W	1.70
11589.00	90.200	340.100	8140.38	3624.82	3318.87	-1457.69	669631.13	436384.77	32°11'54.779"N	103°47'05.804"W	0.24
11685.00	90.200	339.900	8140.05	3720.65	3409.08	-1490.52	669598.30	436474.97	32°11'55.673"N	103°47'06.180"W	0.21
11780.00	89.800	340.900	8140.05	3815.44	3498.57	-1522.39	669566.43	436564.46	32°11'56.560"N	103°47'06.546"W	1.13
11877.00	89.500	340.000	8140.64	3912.22	3589.98	-1554.85	669533.97	436655.86	32°11'57.466"N	103°47'06.918"W	0.98
11973.00	90.700	338.300	8140.47	4008.12	3679.68	-1589.01	669499.81	436745.57	32°11'58.356"N	103°47'07.310"W	2.17
12066.00	89.700	337.100	8140.15	4101.10	3765.73	-1624.30	669464.52	436831.60	32°11'59.209"N	103°47'07.716"W	1.68
12163.00	89.500	337.500	8140.83	4198.09	3855.21	-1661.73	669427.09	436921.08	32°12'00.096"N	103°47'08.146"W	0.46
12259.00	89.600	334.300	8141.58	4294.07	3942.83	-1700.93	669387.90	437008.69	32°12'00.965"N	103°47'08.597"W	3.33
12354.00	90.600	335.300	8141.41	4389.02	4028.78	-1741.38	669347.46	437094.64	32°12'01.818"N	103°47'09.063"W	1.49
12450.00	89.600	336.000	8141.25	4485.00	4116.24	-1780.96	669307.88	437182.10	32°12'02.685"N	103°47'09.518"W	1.27
12545.00	89.500	335.900	8141.99	4579.99	4202.99	-1819.67	669269.17	437268.84	32°12'03.546"N	103°47'09.964"W	0.15
12641.00	89.800	334.100	8142.58	4675.95	4289.99	-1860.24	669228.60	437355.84	32°12'04.409"N	103°47'10.431"W	1.90



Actual Wellpath Report

No. 302H AWP

Page 7 of 7



REFERENCE WELLPATH IDENTIFICATION

Operator	BOPCO, L.P.	Slot	No. 302H SHL
Area	Eddy County, NM	Well	No. 302H
Field	Poker Lake Unit	Wellbore	No. 302H AWB
Facility	Poker Lake Unit No. 302H		

WELLPATH DATA (163 stations)

MD [ft]	Inclination [°]	Azimuth [°]	TVD [ft]	Vert Sect [ft]	North [ft]	East [ft]	Grid East [srv ft]	Grid North [srv ft]	Latitude	Longitude	DLS [°/100ft]
12737.00	90.000	335.700	8142.75	4771.90	4376.92	-1900.96	669187.88	437442.76	32°12'05.271"N	103°47'10.899"W	1.68
12832.00	90.100	337.300	8142.66	4866.90	4464.04	-1938.84	669150.00	437529.88	32°12'06.135"N	103°47'11.335"W	1.69
12927.00	90.200	338.500	8142.42	4961.87	4552.06	-1974.58	669114.26	437617.89	32°12'07.008"N	103°47'11.746"W	1.27
13022.00	89.000	337.700	8143.08	5056.84	4640.20	-2010.01	669078.83	437706.02	32°12'07.882"N	103°47'12.153"W	1.52
13118.00	88.200	335.100	8145.42	5152.80	4728.14	-2048.43	669040.42	437793.96	32°12'08.754"N	103°47'12.595"W	2.83
13220.00	89.300	332.500	8147.65	5254.64	4819.63	-2093.45	668995.40	437885.44	32°12'09.661"N	103°47'13.113"W	2.77
13315.00	91.500	335.300	8146.99	5349.52	4904.92	-2135.24	668953.62	437970.73	32°12'10.508"N	103°47'13.594"W	3.75
13410.00	91.000	337.100	8144.91	5444.49	4991.82	-2173.56	668915.30	438057.62	32°12'11.369"N	103°47'14.035"W	1.97
13504.00	89.900	336.200	8144.18	5538.48	5078.12	-2210.82	668878.04	438143.91	32°12'12.225"N	103°47'14.464"W	1.51
13598.00	88.800	335.200	8145.24	5632.46	5163.78	-2249.50	668839.37	438229.57	32°12'13.075"N	103°47'14.909"W	1.58
13695.00	91.200	335.900	8145.24	5729.44	5252.07	-2289.64	668799.22	438317.86	32°12'13.951"N	103°47'15.371"W	2.58
13703.00	91.100	335.700	8145.08	5737.44	5259.37	-2292.92	668795.95	438325.16	32°12'14.023"N	103°47'15.409"W	2.79
13767.00	91.100	335.700	8143.85	5801.42	5317.69	-2319.25	668769.61	438383.47	32°12'14.601"N	103°47'15.712"W	0.00

TARGETS

Name	MD [ft]	TVD [ft]	North [ft]	East [ft]	Grid East [srv ft]	Grid North [srv ft]	Latitude	Longitude	Shape
No. 302H PBHL		8143.00	5350.12	-2314.34	668774.53	438415.90	32°12'14.922"N	103°47'15.652"W	point

WELLPATH COMPOSITION Ref Wellbore: No. 302H AWB Ref Wellpath: No. 302H AWP

Start MD [ft]	End MD [ft]	Positional Uncertainty Model	Log Name/Comment	Wellbore
0.00	7587.00	Gyrodata standard - Continuous gyro	Gyro <100-7587>	No. 302H AWB
7587.00	13703.00	NaviTrak (Standard)	MWD (7617 - 13703)	No. 302H AWB
13703.00	13767.00	Blind Drilling (std)	Projection to bit	No. 302H AWB