

RECEIVED

DISTRICT I
1625 N. French Dr., Hobbs, NM 88240

DISTRICT II
1901 W. Grand Avenue, Artesia, NM 88210

DISTRICT III
1000 Rio Brazos Rd., Aztec, NM 87410

DISTRICT IV
1220 S. St. Francis Dr., Santa Fe, NM 87505

SEP 29 2008 State of New Mexico
Energy, Minerals and Natural Resources Department

Form C-102
Revised October 12, 2005

Submit to Appropriate District Office
State Lease - 4 Copies
Fee Lease - 3 Copies

HOBBSON CONSERVATION DIVISION
1220 South St. Francis Dr.
Santa Fe, New Mexico 87505

☐ AMENDED REPORT

WELL LOCATION AND ACREAGE DEDICATION PLAT

API Number 30-019-36499	Pool Code 96415	Well Name Willow Lake
Property Code 37296	Property Name PERDOMO "BMP" STATE	Well Number 1H
OGRID No. 025575	Operator Name YATES PETROLEUM CORP.	Elevation 3149'

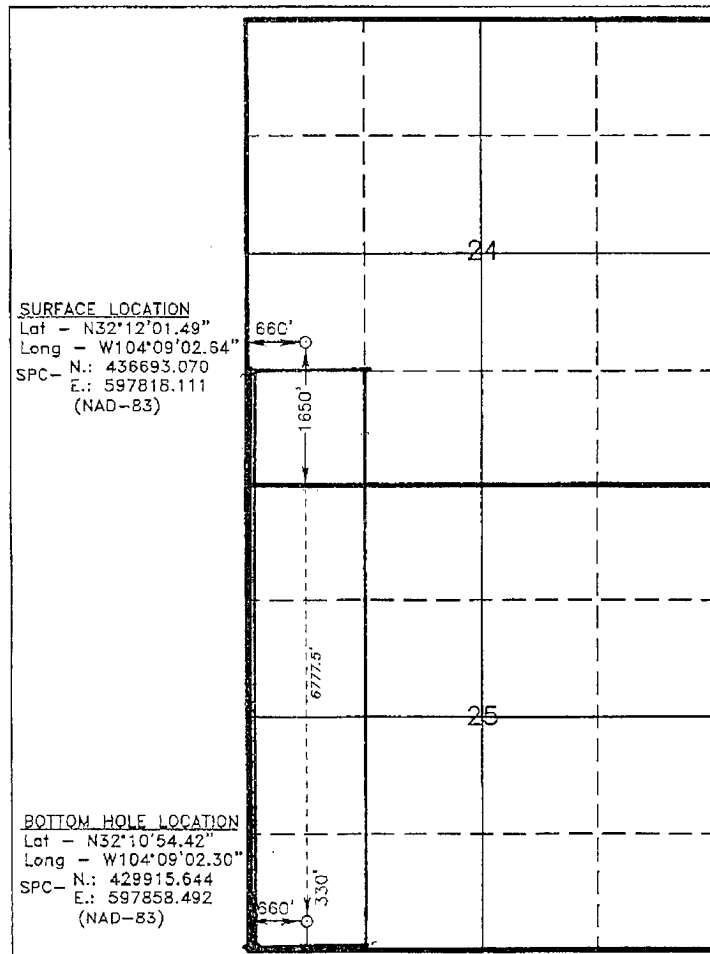
Surface Location

UL or lot No.	Section	Township	Range	Lot Idn	Feet from the	North/South line	Feet from the	East/West line	County
L	24	24 S	27 E		1650	SOUTH	660	WEST	EDDY

Bottom Hole Location If Different From Surface

UL or lot No.	Section	Township	Range	Lot Idn	Feet from the	North/South line	Feet from the	East/West line	County
M	25	24 S	27 E		5125	SOUTH	667	WEST	EDDY
Dedicated Acres 200	Joint or Infill	Consolidation Code	Order No.						

NO ALLOWABLE WILL BE ASSIGNED TO THIS COMPLETION UNTIL ALL INTERESTS HAVE BEEN CONSOLIDATED
OR A NON-STANDARD UNIT HAS BEEN APPROVED BY THE DIVISION



<p>OPERATOR CERTIFICATION</p> <p>I hereby certify that the information contained herein is true and complete to the best of my knowledge and belief, and that this organization either owns a working interest or undleased mineral interest in the land including the proposed bottom hole location pursuant to a contract with an owner of such a mineral or working interest, or to a voluntary pooling agreement or a compulsory pooling order heretofore entered by the division.</p> <p><i>Tina Huerta</i> 8-26-10 Signature Date</p> <p>TINA HUEKTA Printed Name</p>	
<p>SURVEYOR CERTIFICATION</p> <p>I hereby certify that the well location shown on this plat was plotted from field notes of actual surveys made by me or under my supervision and that the same is true and correct to the best of my belief.</p> <p>JULY 27, 2008 Date Surveyed</p> <p><i>Gary L. Jones</i> Signature Professional Surveyor</p> <p>W.O. [Signature]</p> <p>Certificate No. Gary L. Jones 7977</p> <p>BASIN SURVEYS</p>	