



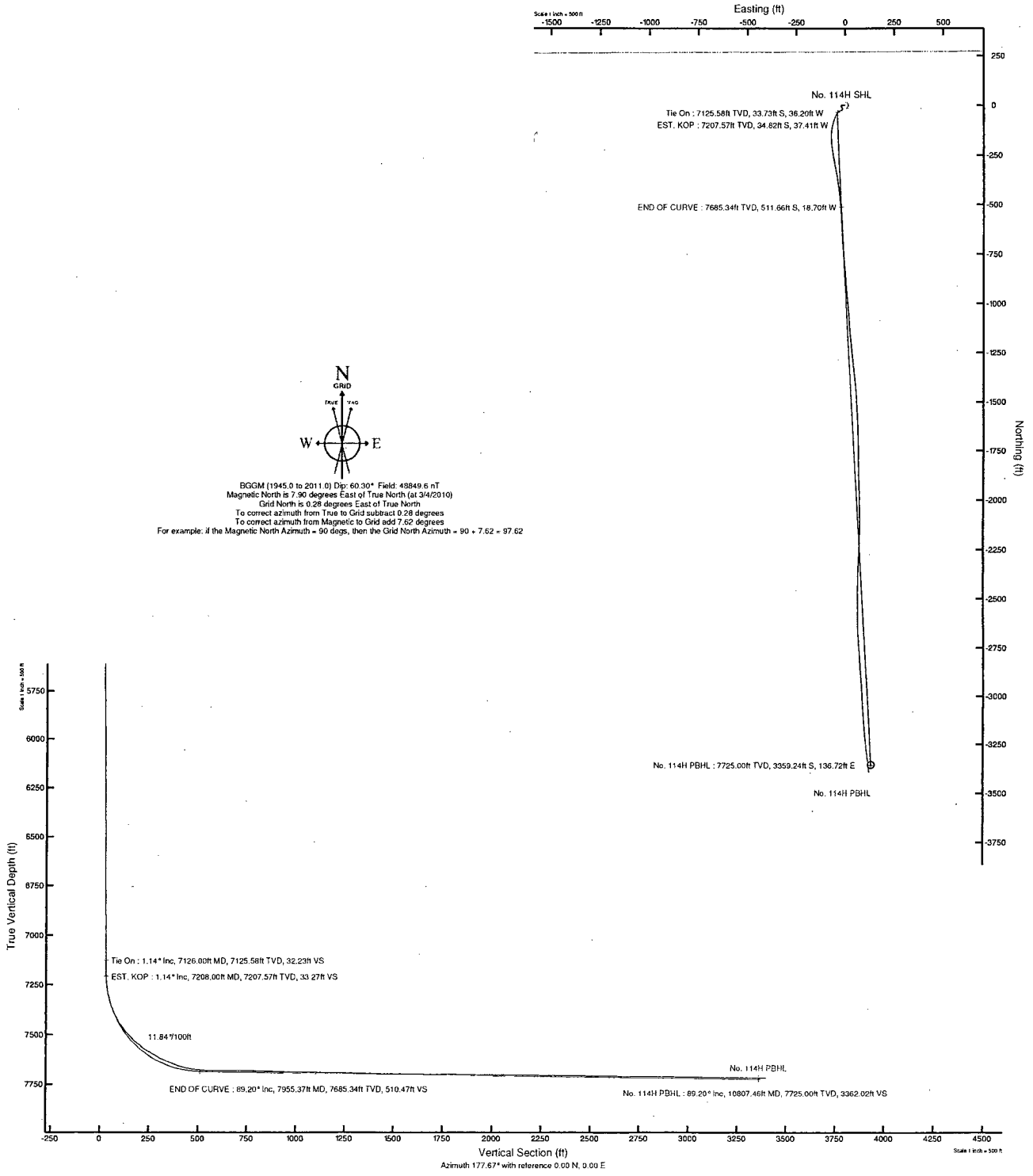
BOPCO, L.P.

Location: Eddy County, NM Slot: No. 114H SHL
 Field: JRU Project Well: No. 114H
 Facility: JRU No. 114H Wellbore: No. 114H PWB



Well Profile Data								
Design Comment	MD (ft)	Inc (°)	Az (°)	TVD (ft)	Local N (ft)	Local E (ft)	DLS (°/100ft)	VS (ft)
Tie On	7126.00	1.140	228.010	7125.58	-33.73	-36.20	0.00	32.23
EST. KOP	7208.00	1.140	228.010	7207.57	-34.82	-37.41	0.00	33.27
END OF CURVE	7955.37	89.203	176.876	7685.34	-511.66	-18.70	11.84	510.47
No. 114H PBHL	10807.46	89.203	176.876	7725.00	-3359.24	136.72	0.00	3362.02

Plot reference wellpath is Plan #1	
True vertical depths are referenced to Rig on No. 114H SHL (RT)	Grid System: NAD83 / TM New Mexico State Planes, Eastern Zone (3001), US feet
Measured depths are referenced to Rig on No. 114H SHL (RT)	North Reference: Grid north
Rig on No. 114H SHL (RT) to Mean Sea Level: 3345 feet	Scale: True distance
Mean Sea Level to Mud line (Facility: JRU No. 114H): -3236 feet	Depths are in feet
Coordinates are in feet referenced to Surface Location	Created by: gomeoscr on 11/17/2010





Actual Wellpath Report

No. 114H AWP

Page 1 of 5



INTEQ

REFERENCE WELLPATH IDENTIFICATION

Operator	BOPCO, L.P.	Slot	No. 114H SHL
Area	Eddy County, NM	Well	No. 114H
Field	JRU Project	Wellbore	No. 114H AWB
Facility	JRU No. 114H		

REPORT SETUP INFORMATION

Projection System	NAD83 / TM New Mexico State Planes, Eastern Zone (3001), US feet	Software System	WellArchitect® 2.0
North Reference	Grid	User	Gomeoscr
Scale	0.999939	Report Generated	11/29/2010 at 7:01:01 AM
Convergence at slot	0.28° East	Database/Source file	WA Midland/No. 114H_AWB.xml

WELLPATH LOCATION

	Local coordinates		Grid coordinates		Geographic coordinates	
	North[ft]	East[ft]	Easting[USft]	Northing[USft]	Latitude	Longitude
Slot Location	0.00	0.00	702728.80	487819.34	32°20'24.016"N	103°48'38.742"W
Facility Reference Pt			702728.80	487819.34	32°20'24.016"N	103°48'38.742"W
Field Reference Pt			697621.65	485218.03	32°19'58.517"N	103°49'38.415"W

WELLPATH DATA

Calculation method	Minimum curvature	Rig on No. 114H SHL (RT) to GL	19.00ft
Horizontal Reference Pt	Surface Location	Rig on No. 114H SHL (RT) to Mean Sea Level	3345.00ft
Vertical Reference Pt	Rig on No. 114H SHL (RT)	GL to Mud Line (Facility)	0.00ft
MD Reference Pt	Rig on No. 114H SHL (RT)	Section Origin	N 0.00, E 0.00 ft
Field Vertical Reference	Mean Sea Level	Section Azimuth	177.67°



Actual Wellpath Report

No. 114H AWP

Page 2 of 5



INTEQ

REFERENCE WELLPATH IDENTIFICATION

Operator	BOPCO, L.P.	Slot	No. 114H SHL
Area	Eddy County, NM	Well	No. 114H
Field	JRU Project	Wellbore	No. 114H AWB
Facility	JRU No. 114H		

WELLPATH DATA (137 stations)

MD [ft]	Inclination [°]	Azimuth [°]	TVD [ft]	Vert Sect [ft]	North [ft]	East [ft]	Grid East [srv ft]	Grid North [srv ft]	Latitude	Longitude	DLS [°/100ft]	Comments
0.00	0.000	9.360	0.00	0.00	0.00	0.00	702728.80	487819.34	32°20'24.016"N	103°48'38.742"W	0.00	
100.00	0.090	9.360	100.00	-0.08	0.08	0.01	702728.81	487819.41	32°20'24.017"N	103°48'38.742"W	0.09	
200.00	0.410	283.830	200.00	-0.25	0.24	-0.32	702728.47	487819.58	32°20'24.018"N	103°48'38.746"W	0.41	
300.00	0.650	265.690	299.99	-0.33	0.28	-1.23	702727.56	487819.62	32°20'24.019"N	103°48'38.757"W	0.29	
400.00	0.560	253.320	399.99	-0.19	-0.10	-2.27	702726.53	487819.44	32°20'24.017"N	103°48'38.769"W	0.16	
500.00	0.460	261.110	499.99	-0.03	-0.10	-3.13	702725.66	487819.23	32°20'24.015"N	103°48'38.779"W	0.12	
600.00	0.630	267.270	599.98	0.02	-0.19	-4.08	702724.72	487819.15	32°20'24.014"N	103°48'38.790"W	0.18	
700.00	0.730	261.630	699.97	0.09	-0.31	-5.26	702723.54	487819.03	32°20'24.013"N	103°48'38.804"W	0.12	
800.00	0.690	267.180	799.97	0.17	-0.43	-6.49	702722.31	487818.90	32°20'24.012"N	103°48'38.818"W	0.08	
900.00	0.680	273.420	899.96	0.11	-0.43	-7.68	702721.11	487818.91	32°20'24.012"N	103°48'38.832"W	0.08	
1000.00	0.650	271.180	999.95	0.02	-0.38	-8.84	702719.95	487818.96	32°20'24.013"N	103°48'38.845"W	0.04	
1100.00	0.600	282.400	1099.95	-0.15	-0.25	-9.92	702718.87	487819.08	32°20'24.014"N	103°48'38.858"W	0.13	
1200.00	0.590	275.460	1199.94	-0.35	-0.09	-10.95	702717.85	487819.24	32°20'24.016"N	103°48'38.870"W	0.07	
1300.00	0.620	281.570	1299.94	-0.55	0.06	-11.99	702716.81	487819.40	32°20'24.017"N	103°48'38.882"W	0.07	
1400.00	0.490	273.580	1399.93	-0.73	0.20	-12.95	702715.85	487819.54	32°20'24.019"N	103°48'38.893"W	0.15	
1500.00	0.470	277.130	1499.93	-0.84	0.28	-13.78	702715.02	487819.61	32°20'24.019"N	103°48'38.903"W	0.04	
1600.00	0.480	252.080	1599.92	-0.79	0.20	-14.58	702714.21	487819.54	32°20'24.019"N	103°48'38.912"W	0.21	
1700.00	0.410	261.340	1699.92	-0.64	0.02	-15.34	702713.46	487819.35	32°20'24.017"N	103°48'38.921"W	0.10	
1800.00	0.320	225.040	1799.92	-0.41	-0.23	-15.89	702712.91	487819.10	32°20'24.014"N	103°48'38.927"W	0.24	
1900.00	0.280	219.560	1899.92	-0.04	-0.62	-16.24	702712.55	487818.72	32°20'24.014"N	103°48'38.932"W	0.05	
2000.00	0.270	225.320	1999.92	0.30	-0.97	-16.56	702712.23	487818.36	32°20'24.007"N	103°48'38.935"W	0.03	
2100.00	0.280	209.080	2099.92	0.67	-1.35	-16.85	702711.95	487817.98	32°20'24.003"N	103°48'38.939"W	0.08	
2200.00	0.300	219.480	2199.91	1.07	-1.77	-17.14	702711.66	487817.57	32°20'23.999"N	103°48'38.942"W	0.06	
2300.00	0.320	212.180	2299.91	1.50	-2.21	-17.45	702711.35	487817.13	32°20'23.995"N	103°48'38.946"W	0.04	
2400.00	0.500	187.150	2399.91	2.16	-2.88	-17.65	702711.14	487816.46	32°20'23.988"N	103°48'38.948"W	0.25	
2500.00	0.380	193.830	2499.91	2.91	-3.63	-17.79	702711.01	487815.70	32°20'23.981"N	103°48'38.950"W	0.13	
2600.00	0.450	186.850	2599.90	3.61	-4.34	-17.91	702710.88	487814.99	32°20'23.974"N	103°48'38.951"W	0.09	
2700.00	0.410	191.290	2699.90	4.35	-5.08	-18.03	702710.77	487814.25	32°20'23.967"N	103°48'38.953"W	0.05	
2800.00	0.290	199.350	2799.90	4.93	-5.67	-18.18	702710.61	487813.66	32°20'23.961"N	103°48'38.954"W	0.13	
2900.00	0.270	209.540	2899.90	5.37	-6.12	-18.38	702710.41	487813.22	32°20'23.956"N	103°48'38.957"W	0.05	
3000.00	0.270	206.060	2999.90	5.77	-6.53	-18.60	702710.19	487812.80	32°20'23.952"N	103°48'38.959"W	0.02	
3100.00	0.240	204.060	3099.90	6.17	-6.94	-18.79	702710.00	487812.40	32°20'23.948"N	103°48'38.962"W	0.03	
3200.00	0.430	124.180	3199.90	6.58	-7.34	-18.57	702710.23	487812.00	32°20'23.944"N	103°48'38.959"W	0.45	
3300.00	0.690	121.990	3299.89	7.14	-7.87	-17.75	702711.05	487811.47	32°20'23.939"N	103°48'38.950"W	0.26	
3400.00	0.100	270.190	3399.89	7.48	-8.19	-17.32	702711.47	487811.15	32°20'23.936"N	103°48'38.945"W	0.78	
3500.00	0.190	275.990	3499.89	7.45	-8.17	-17.58	702711.22	487811.17	32°20'23.936"N	103°48'38.948"W	0.09	
3600.00	0.270	170.310	3599.89	7.66	-8.39	-17.70	702711.10	487810.95	32°20'23.934"N	103°48'38.949"W	0.37	
3700.00	0.610	151.530	3699.88	8.37	-9.09	-17.41	702711.39	487810.25	32°20'23.927"N	103°48'38.946"W	0.36	
3800.00	0.560	147.290	3799.88	9.27	-9.96	-16.89	702711.91	487809.37	32°20'23.918"N	103°48'38.940"W	0.07	
3900.00	0.540	154.290	3899.87	10.12	-10.80	-16.42	702712.37	487808.54	32°20'23.910"N	103°48'38.934"W	0.07	
4000.00	0.460	146.660	3999.87	10.90	-11.56	-16.00	702712.80	487807.78	32°20'23.902"N	103°48'38.929"W	0.10	
4100.00	0.480	142.700	4099.87	11.59	-12.23	-15.52	702713.27	487807.11	32°20'23.896"N	103°48'38.924"W	0.04	
4200.00	0.470	133.070	4199.86	12.22	-12.84	-14.97	702713.83	487806.49	32°20'23.890"N	103°48'38.917"W	0.08	
4300.00	0.460	130.600	4299.86	12.79	-13.38	-14.36	702714.43	487805.95	32°20'23.884"N	103°48'38.910"W	0.02	
4400.00	0.450	136.170	4399.86	13.36	-13.93	-13.79	702715.01	487805.41	32°20'23.879"N	103°48'38.904"W	0.05	



Actual Wellpath Report

No. 114H AWP

Page 3 of 5



INTEQ

REFERENCE WELL IDENTIFICATION

Operator	BOPCO, L.P.	Slot	No. 114H SHL
Area	Eddy County, NM	Well	No. 114H
Field	JRU Project	Wellbore	No. 114H AWB
Facility	JRU No. 114H		

WELLPATH DATA (137 stations)

MD [ft]	Inclination [°]	Azimuth [°]	TVD [ft]	Vert Sect [ft]	North [ft]	East [ft]	Grid East [srv ft]	Grid North [srv ft]	Latitude	Longitude	DLS [°/100ft]	Comments
4500.00	0.470	153.400	4499.85	14.02	-14.58	-13.33	702715.46	487804.76	32°20'23.872"N	103°48'38.898"W	0.14	
4600.00	0.450	164.540	4599.85	14.78	-15.32	-13.04	702715.75	487804.01	32°20'23.865"N	103°48'38.895"W	0.09	
4700.00	0.550	166.700	4699.85	15.63	-16.17	-12.83	702715.97	487803.17	32°20'23.857"N	103°48'38.893"W	0.10	
4800.00	0.580	172.080	4799.84	16.61	-17.14	-12.65	702716.15	487802.20	32°20'23.847"N	103°48'38.891"W	0.06	
4900.00	0.550	174.470	4899.84	17.59	-18.12	-12.53	702716.26	487801.22	32°20'23.837"N	103°48'38.889"W	0.04	
5000.00	0.540	184.160	4999.83	18.54	-19.06	-12.52	702716.28	487800.27	32°20'23.828"N	103°48'38.889"W	0.09	
5100.00	0.480	197.340	5099.83	19.40	-19.93	-12.68	702716.12	487799.40	32°20'23.819"N	103°48'38.891"W	0.13	
5200.00	0.420	184.610	5199.83	20.16	-20.70	-12.83	702715.96	487798.64	32°20'23.812"N	103°48'38.893"W	0.12	
5300.00	0.450	197.400	5299.82	20.89	-21.44	-12.98	702715.82	487797.90	32°20'23.804"N	103°48'38.895"W	0.10	
5400.00	0.450	203.430	5399.82	21.62	-22.17	-13.25	702715.54	487797.16	32°20'23.797"N	103°48'38.898"W	0.05	
5500.00	0.500	207.480	5499.82	22.35	-22.92	-13.61	702715.18	487796.42	32°20'23.790"N	103°48'38.902"W	0.06	
5600.00	0.430	222.590	5599.81	22.99	-23.58	-14.07	702714.73	487795.75	32°20'23.783"N	103°48'38.907"W	0.14	
5700.00	0.520	222.870	5699.81	23.58	-24.19	-14.63	702714.17	487795.14	32°20'23.777"N	103°48'38.914"W	0.09	
5800.00	0.500	222.120	5799.81	24.21	-24.85	-15.23	702713.57	487794.49	32°20'23.771"N	103°48'38.921"W	0.02	
5900.00	0.550	233.400	5899.80	24.79	-25.46	-15.91	702712.89	487793.88	32°20'23.765"N	103°48'38.929"W	0.11	
6000.00	0.500	227.460	5999.80	25.34	-26.04	-16.62	702712.18	487793.30	32°20'23.759"N	103°48'38.937"W	0.07	
6100.00	0.610	229.380	6099.79	25.96	-26.68	-17.34	702711.46	487792.66	32°20'23.753"N	103°48'38.946"W	0.11	
6200.00	0.700	237.820	6199.79	26.59	-27.35	-18.26	702710.53	487791.98	32°20'23.746"N	103°48'38.957"W	0.13	
6300.00	1.100	259.750	6299.77	27.03	-27.85	-19.72	702709.07	487791.49	32°20'23.741"N	103°48'38.974"W	0.52	
6400.00	1.280	256.670	6399.75	27.37	-28.28	-21.75	702707.04	487791.06	32°20'23.737"N	103°48'38.997"W	0.19	
6500.00	1.290	258.020	6499.73	27.77	-28.77	-23.94	702704.85	487790.57	32°20'23.732"N	103°48'39.023"W	0.03	
6600.00	1.340	257.130	6599.70	28.17	-29.26	-26.18	702702.61	487790.07	32°20'23.728"N	103°48'39.049"W	0.05	
6700.00	1.310	254.660	6699.67	28.65	-29.83	-28.43	702700.37	487789.51	32°20'23.722"N	103°48'39.075"W	0.06	
6800.00	1.220	248.380	6799.65	29.26	-30.52	-30.52	702698.28	487788.82	32°20'23.715"N	103°48'39.100"W	0.17	
6900.00	1.210	246.410	6899.63	29.99	-31.34	-32.48	702696.32	487788.00	32°20'23.707"N	103°48'39.123"W	0.04	
7000.00	1.070	233.630	6999.61	30.90	-32.31	-34.19	702694.60	487787.03	32°20'23.698"N	103°48'39.143"W	0.29	
7100.00	1.150	237.060	7099.59	31.93	-33.41	-35.79	702693.01	487785.93	32°20'23.687"N	103°48'39.161"W	0.10	
7126.00	1.140	228.010	7125.58	32.23	-33.73	-36.20	702692.60	487785.61	32°20'23.684"N	103°48'39.166"W	0.70	
7147.00	1.000	233.000	7146.58	32.46	-33.98	-36.50	702692.30	487785.36	32°20'23.682"N	103°48'39.170"W	0.80	
7178.00	1.100	238.100	7177.57	32.76	-34.30	-36.97	702691.83	487785.04	32°20'23.678"N	103°48'39.175"W	0.44	
7208.00	1.800	218.300	7207.57	33.26	-34.82	-37.51	702691.29	487784.52	32°20'23.673"N	103°48'39.181"W	2.84	
7240.00	4.800	202.500	7239.51	34.86	-36.45	-38.33	702690.47	487782.89	32°20'23.657"N	103°48'39.191"W	9.71	
7271.00	8.700	202.900	7270.29	38.16	-39.81	-39.74	702689.06	487779.53	32°20'23.624"N	103°48'39.208"W	12.58	
7303.00	13.100	203.900	7301.70	43.61	-45.36	-42.15	702686.65	487773.98	32°20'23.569"N	103°48'39.236"W	13.76	
7334.00	17.600	205.800	7331.59	50.89	-52.79	-45.62	702683.18	487766.55	32°20'23.496"N	103°48'39.277"W	14.60	
7365.00	21.800	204.600	7360.77	60.16	-62.25	-50.05	702678.74	487757.09	32°20'23.402"N	103°48'39.329"W	13.61	
7397.00	26.000	200.700	7390.02	71.92	-74.22	-55.01	702673.79	487745.12	32°20'23.284"N	103°48'39.388"W	14.02	
7427.00	29.700	196.200	7416.54	85.03	-87.51	-59.41	702669.39	487731.83	32°20'23.153"N	103°48'39.440"W	14.18	
7458.00	34.000	192.300	7442.87	100.70	-103.37	-63.40	702665.40	487715.98	32°20'22.996"N	103°48'39.487"W	15.37	
7489.00	37.700	188.400	7468.00	118.41	-121.22	-66.63	702662.17	487698.12	32°20'22.820"N	103°48'39.526"W	14.02	
7520.00	41.500	184.000	7491.89	137.94	-140.85	-68.74	702660.06	487678.49	32°20'22.626"N	103°48'39.551"W	15.23	
7551.00	44.800	179.300	7514.50	159.08	-162.03	-69.32	702659.48	487657.31	32°20'22.416"N	103°48'39.559"W	14.86	
7583.00	47.900	175.500	7536.59	182.22	-185.15	-68.25	702660.55	487634.20	32°20'22.187"N	103°48'39.548"W	12.95	
7614.00	51.900	172.700	7556.56	205.88	-208.73	-65.80	702663.00	487610.62	32°20'21.954"N	103°48'39.521"W	14.63	
7644.00	55.200	171.200	7574.38	229.88	-232.61	-62.41	702666.39	487586.74	32°20'21.717"N	103°48'39.483"W	11.71	



Actual Wellpath Report

No. 114H AWP

Page 4 of 5



INTEQ

REFERENCE WELLPATH IDENTIFICATION

Operator	BOPCO, L.P.	Slot	No. 114H SHL
Area	Eddy County, NM	Well	No. 114H
Field	JRU Project	Wellbore	No. 114H AWB
Facility	JRU No. 114H		

WELLPATH DATA (137 stations)

MD [ft]	Inclination [°]	Azimuth [°]	TVD [ft]	Vert Sect [ft]	North [ft]	East [ft]	Grid East [srv ft]	Grid North [srv ft]	Latitude	Longitude	DLS [°/100ft]	Comments
7676.00	58.900	170.300	7591.78	256.54	-259.11	-58.09	702670.71	487560.24	32°20'21.455"N	103°48'39.434"W	11.80	
7708.00	61.800	169.600	7607.61	284.09	-286.49	-53.24	702675.56	487532.86	32°20'21.184"N	103°48'39.379"W	9.26	
7739.00	63.500	169.500	7621.86	311.35	-313.57	-48.24	702680.56	487505.79	32°20'20.916"N	103°48'39.322"W	5.49	
7771.00	65.900	169.900	7635.53	340.00	-342.03	-43.07	702685.73	487477.33	32°20'20.634"N	103°48'39.264"W	7.58	
7803.00	69.600	170.400	7647.64	369.35	-371.21	-38.01	702690.79	487448.15	32°20'20.345"N	103°48'39.206"W	11.65	
7834.00	72.500	173.300	7657.71	398.52	-400.23	-33.86	702694.94	487419.14	32°20'20.057"N	103°48'39.160"W	12.88	
7865.00	76.000	173.100	7666.13	428.26	-429.85	-30.32	702698.47	487389.52	32°20'19.764"N	103°48'39.120"W	11.31	
7897.00	78.400	173.100	7673.21	459.36	-460.82	-26.58	702702.22	487358.54	32°20'19.458"N	103°48'39.078"W	7.50	
7928.00	81.800	174.700	7678.54	489.83	-491.18	-23.33	702705.46	487328.18	32°20'19.157"N	103°48'39.042"W	12.09	
7960.00	84.600	175.200	7682.33	521.56	-522.83	-20.54	702708.26	487296.54	32°20'18.844"N	103°48'39.011"W	8.89	
7992.00	87.900	177.500	7684.43	553.48	-554.69	-18.51	702710.29	487264.68	32°20'18.528"N	103°48'38.989"W	12.56	
8023.00	90.100	176.800	7684.97	584.47	-585.65	-16.97	702711.83	487233.73	32°20'18.222"N	103°48'38.973"W	7.45	
8054.00	91.600	176.500	7684.51	615.46	-616.59	-15.15	702713.64	487202.79	32°20'17.916"N	103°48'38.954"W	4.93	
8086.00	90.700	176.400	7683.86	647.45	-648.52	-13.17	702715.62	487170.86	32°20'17.600"N	103°48'38.933"W	2.83	
8118.00	90.500	176.300	7683.53	679.44	-680.45	-11.14	702717.66	487138.92	32°20'17.284"N	103°48'38.911"W	0.70	
8149.00	88.900	175.600	7683.69	710.42	-711.38	-8.95	702719.85	487108.01	32°20'16.977"N	103°48'38.887"W	5.63	
8181.00	88.300	175.100	7684.47	742.39	-743.26	-6.35	702722.44	487076.12	32°20'16.662"N	103°48'38.859"W	2.44	
8195.00	88.200	175.300	7684.90	756.37	-757.21	-5.18	702723.61	487062.18	32°20'16.524"N	103°48'38.846"W	1.60	
8264.00	87.800	174.500	7687.31	825.24	-825.89	0.95	702729.74	486993.50	32°20'15.844"N	103°48'38.778"W	1.30	
8359.00	88.900	175.500	7690.04	920.10	-920.49	9.22	702738.02	486898.91	32°20'14.907"N	103°48'38.687"W	1.56	
8454.00	89.000	174.700	7691.79	1014.99	-1015.12	17.34	702746.13	486804.28	32°20'13.971"N	103°48'38.598"W	0.85	
8550.00	88.900	175.600	7693.54	1110.88	-1110.76	25.45	702754.24	486708.64	32°20'13.024"N	103°48'38.509"W	0.94	
8646.00	88.900	174.200	7695.39	1206.75	-1206.36	33.98	702762.78	486613.05	32°20'12.078"N	103°48'38.415"W	1.46	
8742.00	88.900	173.500	7697.23	1302.51	-1301.79	44.27	702773.06	486517.63	32°20'11.133"N	103°48'38.300"W	0.73	
8838.00	88.900	174.200	7699.07	1398.28	-1397.22	54.55	702783.34	486422.20	32°20'10.188"N	103°48'38.186"W	0.73	
8933.00	89.400	176.200	7700.48	1493.18	-1491.87	62.50	702791.29	486327.56	32°20'09.251"N	103°48'38.099"W	2.17	
9027.00	89.500	177.400	7701.39	1587.16	-1585.72	67.74	702796.53	486233.72	32°20'08.322"N	103°48'38.043"W	1.28	
9124.00	89.500	178.700	7702.23	1684.15	-1682.66	71.04	702799.83	486136.79	32°20'07.363"N	103°48'38.010"W	1.34	
9220.00	89.400	179.700	7703.15	1780.11	-1778.64	72.38	702801.18	486040.81	32°20'06.413"N	103°48'38.000"W	1.05	
9316.00	89.400	178.500	7704.16	1876.08	-1874.62	73.89	702802.68	485944.83	32°20'05.463"N	103°48'37.988"W	1.25	
9411.00	89.400	179.000	7705.15	1971.05	-1969.59	75.96	702804.75	485849.87	32°20'04.523"N	103°48'37.969"W	0.53	
9506.00	89.500	178.900	7706.07	2066.03	-2064.57	77.71	702806.50	485754.89	32°20'03.584"N	103°48'37.954"W	0.15	
9601.00	89.500	181.300	7706.89	2160.93	-2159.56	77.54	702806.33	485659.91	32°20'02.644"N	103°48'37.961"W	2.53	
9697.00	89.400	182.600	7707.82	2256.66	-2255.50	74.27	702803.06	485563.98	32°20'01.695"N	103°48'38.005"W	1.36	
9794.00	89.500	182.500	7708.75	2353.30	-2352.40	69.96	702798.75	485467.08	32°20'00.736"N	103°48'38.061"W	0.15	
9890.00	89.400	179.900	7709.67	2449.11	-2448.37	67.95	702796.74	485371.12	32°19'59.786"N	103°48'38.090"W	2.71	
9984.00	89.000	181.200	7710.98	2542.97	-2542.35	67.05	702795.84	485277.14	32°19'58.857"N	103°48'38.105"W	1.45	
10080.00	89.000	178.600	7712.66	2638.88	-2638.33	67.21	702796.00	485181.17	32°19'57.907"N	103°48'38.109"W	2.71	
10176.00	89.400	175.700	7714.00	2734.86	-2734.19	71.99	702800.78	485085.32	32°19'56.958"N	103°48'38.059"W	3.05	
10273.00	89.400	176.400	7715.01	2831.81	-2830.95	78.67	702807.46	484988.56	32°19'56.000"N	103°48'37.986"W	0.72	
10367.00	89.400	176.000	7716.00	2925.77	-2924.74	84.90	702813.69	484894.78	32°19'55.072"N	103°48'37.919"W	0.43	
10463.00	88.600	176.900	7717.67	3021.74	-3020.54	90.84	702819.63	484798.99	32°19'54.124"N	103°48'37.855"W	1.25	
10558.00	88.800	175.800	7719.83	3116.69	-3115.32	96.89	702825.67	484704.21	32°19'53.186"N	103°48'37.790"W	1.18	
10652.00	90.300	174.600	7720.57	3210.59	-3208.99	104.75	702833.54	484610.55	32°19'52.259"N	103°48'37.704"W	2.04	
10747.00	88.400	172.200	7721.64	3305.31	-3303.34	115.67	702844.46	484516.21	32°19'51.324"N	103°48'37.582"W	3.22	



Actual Wellpath Report

No. 114H AWP

Page 5 of 5



INTEQ

REFERENCE WELLPATH IDENTIFICATION

Operator	BOPCO, L.P.	Slot	No. 114H SHL
Area	Eddy County, NM	Well	No. 114H
Field	JRU Project	Wellbore	No. 114H AWB
Facility	JRU No. 114H		

WELLPATH DATA (137 stations)

MD [ft]	Inclination [°]	Azimuth [°]	TVD [ft]	Vert Sect [ft]	North [ft]	East [ft]	Grid East [srv ft]	Grid North [srv ft]	Latitude	Longitude	DLS [°/100ft]	Comments
10768.00	88.600	173.000	7722.19	3326.22	-3324.16	118.37	702847.16	484495.39	32°19'51.118"N	103°48'37.552"W	3.93	
10842.00	88.600	173.000	7724.00	3399.95	-3397.58	127.39	702856.17	484421.97	32°19'50.391"N	103°48'37.451"W	0.00	Proj to Bit

TARGETS

Name	MD [ft]	TVD [ft]	North [ft]	East [ft]	Grid East [srv ft]	Grid North [srv ft]	Latitude	Longitude	Shape
No. 114H PBHL		7725.00	-3359.24	136.72	702865.51	484460.30	32°19'50.770"N	103°48'37.340"W	point

WELLPATH COMPOSITION Ref Wellbore: No. 114H AWB Ref Wellpath: No. 114H AWP

Start MD [ft]	End MD [ft]	Positional Uncertainty Model	Log Name/Comment	Wellbore
0.00	7126.00	Generic gyro - northseeking (Standard)	Gyro	No. 114H AWB
7126.00	10842.00	NaviTrak (Standard)	MWD2	No. 114H AWB