

DISTRICT I
1625 N. FRENCH DR., HOBBS, NM 88240

State of New Mexico
Energy, Minerals and Natural Resources Department

Form C-102

Revised October 12, 2005

Submit to Appropriate District Office

State Lease - 4 Copies

Fee Lease - 3 Copies

DISTRICT II
6601 W. GRAND AVENUE, ARTESIA, NM 88210

OIL CONSERVATION DIVISION

11885 SOUTH ST. FRANCIS DR.
Santa Fe, New Mexico 87505

DISTRICT III
1000 RIO BRAZOS RD., AZTEC, NM 87410

DISTRICT IV
11885 S. ST. FRANCIS DR., SANTA FE, NM 87505

WELL LOCATION AND ACREAGE DEDICATION PLAT

☐ AMENDED REPORT

API Number 30-015 - 38561 ✓	Pool Code 28509	Pool Name Grayburg Jackson; SR-Q-G-SA
Property Code 308086 ✓	Property Name BURCH KEELY UNIT	Well Number 623 ✓
OGRID No. 229137 ✓	Operator Name COG OPERATING, LLC	Elevation 3603'

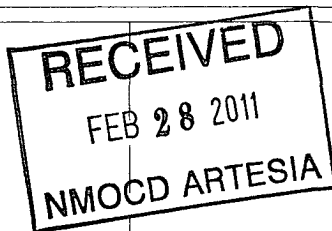
Surface Location

UL or lot No. K	Section 24	Township 17-S	Range 29-E	Lot Idn	Feet from the 2469	North/South line SOUTH	Feet from the 2010	East/West line WEST	County EDDY
--------------------	---------------	------------------	---------------	---------	-----------------------	---------------------------	-----------------------	------------------------	----------------

Bottom Hole Location If Different From Surface

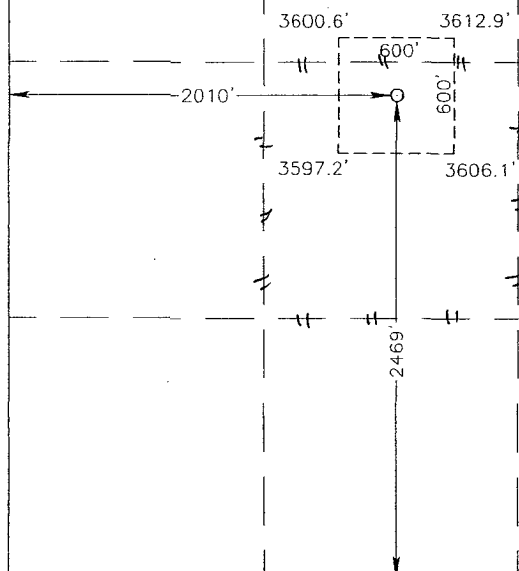
UL or lot No.	Section	Township	Range	Lot Idn	Feet from the	North/South line	Feet from the	East/West line	County
Dedicated Acres 40	Joint or Infill	Consolidation Code	Order No.						

NO ALLOWABLE WILL BE ASSIGNED TO THIS COMPLETION UNTIL ALL INTERESTS HAVE BEEN CONSOLIDATED
OR A NON-STANDARD UNIT HAS BEEN APPROVED BY THE DIVISION



GEODETIC COORDINATES
NAD 27 NME
SURFACE LOCATION
Y=661962.9 N
X=593244.3 E

LAT.=32.819456° N
LONG.=104.029810° W



OPERATOR CERTIFICATION

I hereby certify that the information herein is true and complete to the best of my knowledge and belief, and that this organization either owns a working interest or unleased mineral interest in the land including the proposed bottom hole location or has a right to drill this well at this location pursuant to a contract with an owner of such mineral or working interest, or to a voluntary pooling agreement or a compulsory pooling order heretofore entered by the division.

Signature Date
Kelly J. Holly
Printed Name

SURVEYOR CERTIFICATION

I hereby certify that the well location shown on this plat was plotted from field notes of actual surveys made by me or under my supervision, and that the same is true and correct to the best of my belief.

NOVEMBER 4, 2010
Date Surveyed
Signature & Seal of Professional Surveyor

Certificate No. 3239
RONALD J. EIDSON 12661 3239