

District I
1625 N. French Dr., Hobbs, NM 88240
District II
1301 W. Grand Avenue, Artesia, NM 88210
District III
1000 Rio Brazos Road, Aztec, NM 87410
District IV
1220 S. St. Francis Dr., Santa Fe, NM 87505

State of New Mexico
Energy Minerals and Natural Resources

Form C-101
June 16, 2008

Oil Conservation Division
1220 South St. Francis Dr.
Santa Fe, NM 87505

Submit to appropriate District Office

☐ AMENDED REPORT

APPLICATION FOR PERMIT TO DRILL, RE-ENTER, DEEPEN, PLUGBACK, OR ADD A ZONE

¹ Operator Name and Address Yates Petroleum Corporation 105 South Fourth Street Artesia, NM 88210		² OGRID Number 025575
³ Property Code 34689	⁴ Property Name NDDUP Unit	⁵ API Number 30-015-28424
⁹ Proposed Pool 1 N. Seven Rivers; Glorieta-Yeso		⁶ Well No. 23
¹⁰ Proposed Pool 2		

7 Surface Location

UL or lot no. K	Section 16	Township 19S	Range 25E	Lot Idn	Feet from the 1780	North/South line South	Feet from the 1980	East/West line West	County Eddy
--------------------	---------------	-----------------	--------------	---------	-----------------------	---------------------------	-----------------------	------------------------	----------------

8 Proposed Bottom Hole Location If Different From Surface

UL or lot no.	Section	Township	Range	Lot Idn	Feet from the	North/South line	Feet from the	East/West line	County
---------------	---------	----------	-------	---------	---------------	------------------	---------------	----------------	--------

Additional Well Information

¹¹ Work Type Code P	¹² Well Type Code O	¹³ Cable/Rotary N/A	¹⁴ Lease Type Code S	¹⁵ Ground Level Elevation 3484'GL
¹⁶ Multiple N	¹⁷ Proposed Depth N/A	¹⁸ Formation Canyon	¹⁹ Contractor N/A	²⁰ Spud Date N/A

21 Proposed Casing and Cement Program

Hole Size	Casing Size	Casing weight/foot	Setting Depth	Sacks of Cement	Estimated TOC
IN PLACE					

²² Describe the proposed program. If this application is to DEEPEN or PLUG BACK, give the data on the present productive zone and proposed new productive zone. Describe the blowout prevention program, if any. Use additional sheets if necessary.

Yates Petroleum Corporation plans to plugback and recompleat this well as follows: MIRU any safety equipment as needed. POOH with production equipment, visually inspect the tubing and replace any bad or worn joints. Run a GR/JB to 7695'. WL set a CIBP at 7638' with 35' cement on top. This will place a plug over open Canyon perforations. Spot a 90 sx Class "C" cement plug from 5554'-6090'. This will leave a plug across Wolfcamp top and open stage tool. WOC and tag, reset if necessary. Spot a 25 sx Class "C" cement plug from 3535'-3675'. This will leave a plug across Bone Spring top. WOC and test casing to 3400 psi. Perforate Yeso 2296'-2350' (55), 2354'-2368' (15), 2378'-2388' (11), 2412'-2418' (7) and 2430'-2438' (9). Stimulate as needed. Flow the well back and allow the well to clean up. TIH with bit to wash down to PBTD. TIH with pumping equipment and turn well to production.

RECEIVED

MAR 08 2011

NM OGD ARTESIA

²³ I hereby certify that the information given above is true and complete to the best of my knowledge and belief.

Signature:

Printed name: Tina Huerta

Title: Regulatory Compliance Supervisor

E-mail Address: tinah@yatespetroleum.com

Date: March 7, 2011

Phone: 575-748-4168

OIL CONSERVATION DIVISION

Approved by:

Title:

Approval Date:

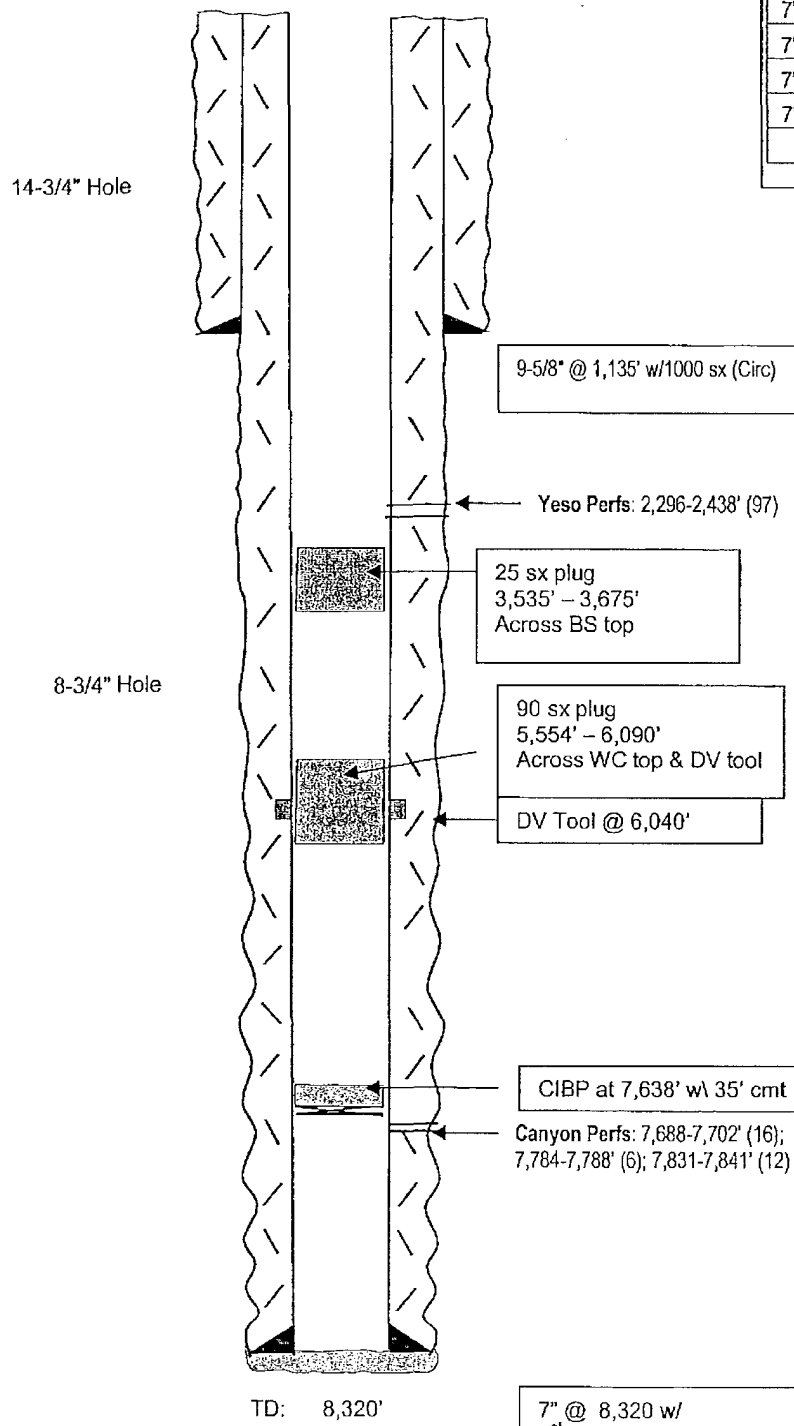
Expiration Date:

Conditions of Approval Attached ☐

WELL NAME: NDDUP #23 **FIELD:** Dagger Draw
LOCATION: 1,780' FSL & 1,980' FWL of Section 16-19S-25E Eddy Co., NM
GL: 3,484' **ZERO:** 18' **KB:** 3502'
SPUD DATE: 5/13/95 **COMPLETION DATE:** 6/12/95
COMMENTS: API No.: 30-015-28424
(Formerly Amole AMM State Com #2)

CASING PROGRAM

9-5/8" 36# J-55	1,135'
7" 26# N-80 (207')	
7" 26# J-55 (973')	
7" 23# J-55 (3,739')	
7" 26# J-55 (2,059')	
7" 26# N-80 (742')	8,320'



After

TOPS	
SA	740'
Glorieta	2,250'
BS	3,625'
WC	5,604'
Canyon	7,646'

7" @ 8,320 w/
 1st Stage: 500 sx (Circ)
 2nd Stage: 1000 (Circ)

Not to Scale
 10/12/10
 DC/Hill