

Hydrogen Sulfide Drilling Operations Plan

Oracle 21 Federal No. 4

Cimarex Energy Co. of Colorado

Unit C, Section 21

T25S-R26E, Eddy County, NM

30-015-38597

H₂S equipment will be rigged up at Surface. The plan should be implemented before drilling out from the surface.

1. Due to a one-time encounter on a previous well, an Intra-salt Pocket was charged with H₂S and a burnable amount of hydrocarbons.

First Potential Problem Zone:

Initial suspected problem zone	Salt Zone @ 1,333'
Potential Open Flow Capacity	1 mcf
Expected H ₂ S Concentration	11,000 ppm
100' ROE	6'
500' ROE	3'

Cimarex will have 24-hour H₂S Safety Supervisors on location while drilling the first 2,000' on this well.

2. Second Potential Problem Zone:

Initial suspected problem zone	Delaware Mountain Group @ 1,800'
Potential Open Flow Capacity	100 mcf
Expected H ₂ S Concentration	1,000 ppm
100' ROE	24'
500' ROE	11'

3. All Company and Contract personnel admitted on location must be trained by a qualified H₂S safety instructor to the following:

- A. Characteristics of H₂S
- B. Physical effects and hazards
- C. Proper use of safety equipment and life support systems.
- D. Principle and operation of H₂S detectors, warning system and briefing areas.
- E. Evacuation procedure, routes and first aid.
- F. Proper use of 30 minute pressure demand air pack.



4. H₂S Detection and Alarm Systems:

- A. H₂S detectors and audio alarm system to be located at bell nipple, end of flow line (mud pit) and on derrick floor or doghouse.

5. Windsock and/or wind streamers:

- A. Windsock at mudpit area should be high enough to be visible.
- B. Windsock at briefing area should be high enough to be visible.

6. Condition Flags and Signs:

- A. Warning sign on access road to location.
- B. Flags to be displayed on sign at entrance to location. Green flag indicates normal safe condition. Yellow flag indicates potential pressure and danger. Red flag indicates danger (H₂S present in dangerous concentration). Only emergency personnel admitted to location.

Hydrogen Sulfide Drilling Operations Plan

Oracle 21 Federal No. 4

Cimarex Energy Co. of Colorado

Unit C, Section 21

T25S-R26E, Eddy County, NM

7. Well control equipment:

- A. See exhibit "E"

8. Communication:

- A. While working under masks chalkboards will be used for communication.
- B. Hand signals will be used where chalk board is inappropriate.
- C. Two way radio will be used to communicate off location in case of emergency help is required. In most cases cellular telephones will be available at most drilling foreman's trailer or living quarters.

9. Drillstem Testing:

No DSTs or cores are planned at this time.

10. Drilling contractor supervisor will be required to be familiar with the effects H₂S has on tubular goods and other mechanical equipment.

11. If H₂S is encountered, mud system will be altered if necessary to maintain control of formation. A mud gas separator will be brought into service along with H₂S scavengers if necessary.

H₂S Contingency Plan
Oracle 21 Federal No. 4
Cimarex Energy Co. of Colorado
Unit C, Section 21
T25S-R26E, Eddy County, NM

Emergency Procedures

In the event of a release of gas containing H₂S, the first responder(s) must:

- ★ Isolate the area and prevent entry by other persons into the 100 ppm ROE.
- ★ Evacuate any public places encompassed by the 100 ppm ROE.
- ★ Be equipped with H₂S monitors and air packs in order to control the release.
- ★ Use the "buddy system" to ensure no injuries occur during the response.
- ★ Take precautions to avoid personal injury during this operation.
- ★ Contact operator and/or local officials to aid in operation. See list of phone numbers attached.
- ★ Have received training in the:
 - ◆ Detection of H₂S, and
 - ◆ Measures for protection against the gas,
 - ◆ Equipment used for protection and emergency response.

Ignition of Gas Source

Should control of the well be considered lost and ignition considered, take care to protect against exposure to Sulfur Dioxide (SO₂). Intentional ignition must be coordinated with the NMOC and local officials. Additionally, the NM State Police may become involved. NM State Police shall be the Incident Command on scene of any major release. Take care to protect downwind whenever there is an ignition of the gas.

Characteristics of H₂S and SO₂

Common Name	Chemical Formula	Specific Gravity	Threshold Limit	Hazardous Limit	Lethal Concentration
Hydrogen Sulfide	H ₂ S	1.189 Air=1	10 ppm	100 ppm/hr	600 ppm
Sulfur Dioxide	SO ₂	2.21 Air=1	2 ppm	N/A	1000 ppm

Contacting Authorities

Cimarex Energy Co. of Colorado's personnel must liaise with local and state agencies to ensure a proper response to a major release. Additionally, the OCD must be notified of the release as soon as possible but no later than 4 hours. Agencies will ask for information such as type and volume of release, wind direction, location of release, etc. Be prepared with all information available including directions to site. The following call list of essential and potential responders has been prepared for use during a release. Cimarex Energy Co. of Colorado's response must be in coordination with the State of New Mexico's "Hazardous Materials Emergency Response Plan" (HMER).

H₂S Contingency Plan Emergency Contacts

Oracle 21 Federal No. 4

Cimarex Energy Co. of Colorado

Unit C, Section 21

T25S-R26E, Eddy County, NM

Company Office

Cimarex Energy Co. of Colorado	800-969-4789
Co. Office and After-Hours Menu	

Key Personnel

Name	Title	Office	Mobile
Doug Park	Drilling Manager	432-620-1934	972-333-1407
Dee Smith	Drilling Super	432-620-1933	972-882-1010
Jim Evans	Drilling Super	432-620-1929	972-465-0564
Roy Shirley	Field Super		432-634-2136

Artesia

Ambulance	911
State Police	575-746-2703
City Police	575-746-2703
Sheriff's Office	575-746-9888
Fire Department	575-746-2701
Local Emergency Planning Committee	575-746-2122
New Mexico Oil Conservation Division	575-748-1283

Carlsbad

Ambulance	911
State Police	575-885-3137
City Police	575-885-2111
Sheriff's Office	575-887-7551
Fire Department	575-887-3798
Local Emergency Planning Committee	575-887-6544
US Bureau of Land Management	575-887-6544

Santa Fe

New Mexico Emergency Response Commission (Santa Fe)	505-476-9600
New Mexico Emergency Response Commission (Santa Fe) 24 Hrs	505-827-9126
New Mexico State Emergency Operations Center	505-476-9635

National

National Emergency Response Center (Washington, D.C.)	800-424-8802
---	--------------

Medical

Flight for Life - 4000 24th St.; Lubbock, TX	806-743-9911
Aerocare - R3, Box 49F; Lubbock, TX	806-747-8923
Med Flight Air Amb - 2301 Yale Blvd S.E., #D3; Albuquerque, NM	505-842-4433
SB Air Med Service - 2505 Clark Carr Loop S.E.; Albuquerque, NM	505-842-4949

Other

Boots & Coots IWC	800-256-9688	or	281-931-8884
Cudd Pressure Control	432-699-0139	or	432-563-3356
Halliburton	575-746-2757		
B.J. Services	575-746-3569		

Surface Use Plan
Oracle 21 Federal No. 4
Cimarex Energy Co. of Colorado
Unit C, Section 21
T25S-R26E, Eddy County, NM

1. Existing Roads: Area maps, Exhibit "A" shows the proposed well site as staked. Exhibit "B" is a reproduction of Eddy Co. General Highway Map. Exhibit "C" is a reproduction of a USGS Topographic Map, and Exhibit "C-1" is a well site layout map, showing proposed road to location.
 - A. The maximum width of the driving surface will be 30.' The road will be crowned and ditched with a 2% slope from the tip of the crown to the edge of the driving surface. The ditches will be 1' deep with 3:1 slopes. The driving surface will be made of 6" rolled and compacted caliche.
 - B. From the junction of Hwy 62-180 and Means Rd, go South on Means Rd for 6.6 miles to lease road. On lease road, go East winding North 1.6 miles to well pad and proposed lease road.
2. Planned Access Roads: 1089.2' of on-lease access road is proposed.
3. Location of Existing Wells in a One-Mile Radius - Exhibit A
 - A. Water wells - None known
 - B. Disposal wells - None known
 - C. Drilling wells - None known
 - D. Producing wells - As shown on Exhibit "A"
 - E. Abandoned wells - As shown on Exhibit "A"
4. Location of Proposed Production Facilities:

If on completion this well is a producer, a tank battery will be used and the necessary production equipment will be installed at the wellsite. See production facilities layout diagram. Any changes to the facilities or off-site facilities will be accompanied by a Sundry Notice.
5. Location and Type of Water Supply:

Water will be purchased locally from a commercial source and trucked over the access roads.
6. Source of Construction Material:

If possible, native caliche will be obtained from the excavation of drill site. Topsoil will be pushed back from the drill site and existing caliche will be ripped and compacted. Then topsoil will be stockpiled on location as depicted on Exhibit "D" (rig layout). If additional material is needed, it will be purchased from a BLM-approved pit as near as possible to the well
7. Methods of Handling Waste Material:
 - A. Drill cuttings will be separated by a series of solids removal equipment and stored in steel containment pits and then hauled to a state-approved disposal facility.
 - B. All trash, junk and other waste material will be contained in trash cages or bins to prevent scattering. When the job is completed all contents will be removed and disposed of in an approved sanitary land fill.
 - C. Salts remaining after completion of well will be picked up by supplier including broken sacks.
 - D. Sewage from living quarters will drain into holding tanks and be cleaned out periodically and hauled to a waste disposal facility. A Porta-John will be provided for the rig crews. This equipment will be properly maintained during the drilling operations and removed upon completion of the well.
 - E. Drilling fluids will be contained in steel pits in a closed circulating system. Fluids will be cleaned and reused. Water produced during testing will be contained in the steel pits and disposed of at a state approved disposal facility. Any oil or condensate produced will be stored in test tanks until sold and hauled from the site.

Surface Use Plan
Oracle 21 Federal No. 4
Cimarex Energy Co. of Colorado
Unit C, Section 21
T25S-R26E, Eddy County, NM

8. Ancillary Facilities:

- A. No camps or airstrips to be constructed.

9. Well Site Layout:

- A. Exhibit "D" shows location and rig layout.
- C. Mud pits in the closed circulating system will be steel pits and the cuttings will be stored in steel containment pits.
- D. Cuttings will be stored in steel pits until they are hauled to a state-approved disposal facility.
- E. If the well is a producer, those areas of the location not essential to production facilities will be reclaimed and seeded per BLM requirements.

10. Plans for Restoration of Surface:

Rehabilitation of the location will start in a timely manner after all drilling operations cease. The type of reclamation will depend on whether the well is a producer or a dry hole.

Drainage systems, if any, will be reshaped to the original configuration with provisions made to alleviate erosion. These may need to be modified in certain circumstances to prevent inundation of the location's pad and surface facilities. After the area has been shaped and contoured, topsoil from the spoil pile will be placed over the disturbed area to the extent possible. Revegetation procedures will comply with BLM standards.

If the well is a dry hole, the pad and road area will be recountoured to match the existing terrain. Topsoil will be spread to the extent possible. Revegetation will comply with BLM standards.

Should the well be a producer, those areas of the location not essential to production facilities and operations will be reclaimed and seeded per BLM requirements. Please see Production Facilities Layout Diagram, exhibit D-1.

11. Other Information

- A. Topography consists of a sloping plane with loose tan sands. Vegetation is mainly yucca, mesquite and shin oak.
- B. The wellsite is on surface owned by Department of the Interior, Bureau of Land Management. The land is used mainly for farming, cattle ranching, recreational use, and oil and gas production.
- C. An Archaeological survey will be conducted on the location and proposed roads, and this report will be filed with the Bureau of Land Management in the Carlsbad BLM office.
- D. There are no known dwellings within 1½ miles of this location.

Operator Certification Statement

Oracle 21 Federal No. 4

Cimarex Energy Co. of Colorado

Unit C, Section 21

T25S-R26E, Eddy County, NM

Operator's Representative

Cimarex Energy Co. of Colorado

600 N. Marienfeld St., Ste. 600

Midland, TX 79701

Office Phone: (432) 571-7800

Zeno Farris

CERTIFICATION: I hereby certify that I, or someone under my direct supervision, have inspected the drill site and access route proposed herein; that I am familiar with the conditions which currently exist; that I have full knowledge of state and Federal laws applicable to this operation; that the statements made in this APD package are, to the best of my knowledge, true and correct; and that the work associated with the operations proposed herein will be performed in conformity with this APD package and the terms and conditions under which it is approved. I also certify that I, or the company I represent, am responsible for the operations conducted under this application. These statements are subject to the provisions of 18 U.S.C. 1001 for the filing of false statements.

Executed this 9th day of November, 2010

NAME: Zeno Farris
Zeno Farris

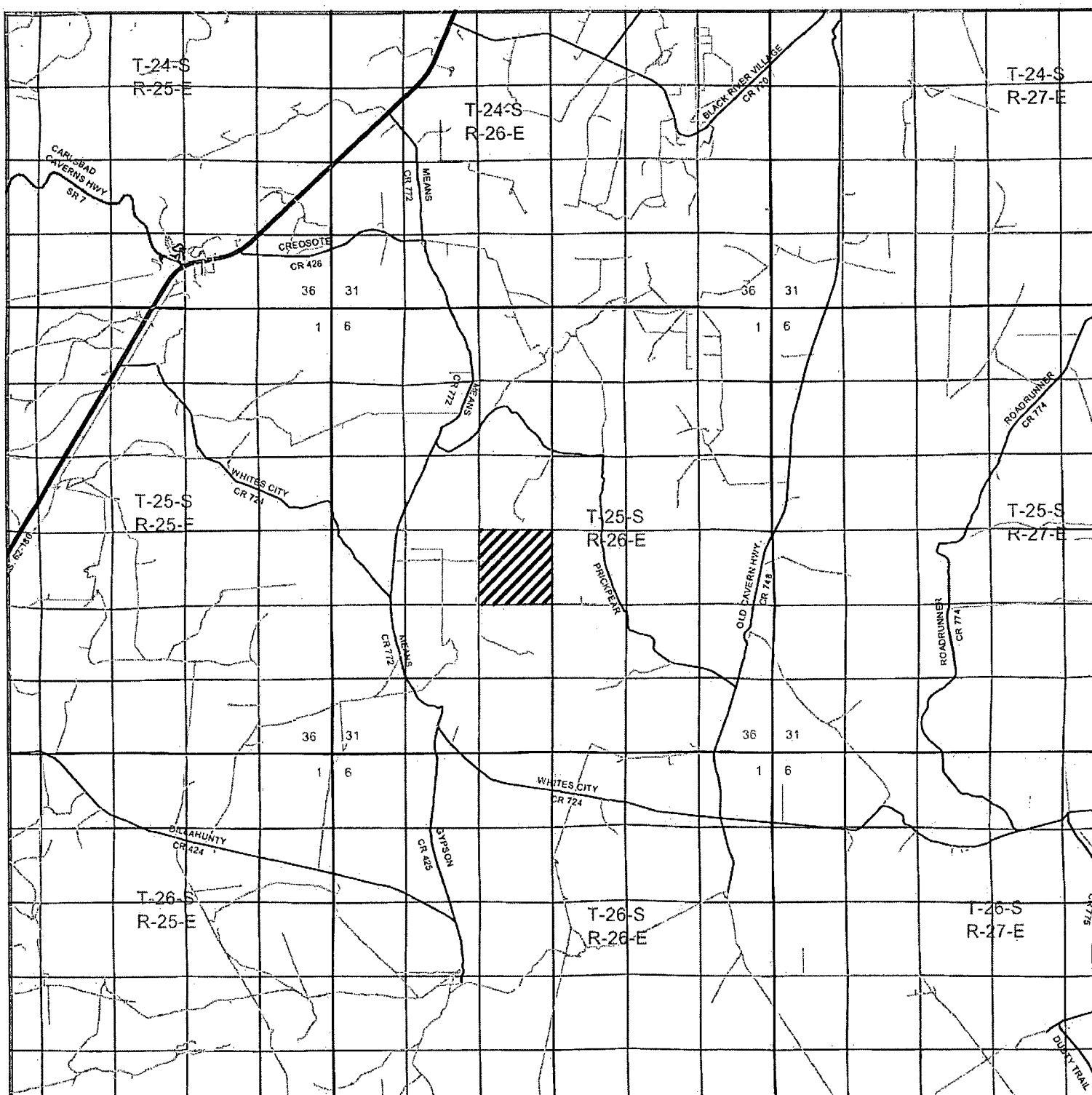
TITLE: Manager Operations Administration

ADDRESS: 600 N. Marienfeld St., Ste. 600
Midland, TX 79701

TELEPHONE: (432) 620-1938

EMAIL: zfarris@cimarex.com

Field Representative: Same as above



ORACLE "21" FEDERAL #4
 Located 400' FNL and 1980' FWL
 Section 21, Township 25 South, Range 26 East,
 N.M.P.M., Eddy County, New Mexico.

basin
surveys
 focused on excellence
 in the oilfield

P.O. Box 1786
 1120 N. West County Rd.
 Hobbs, New Mexico 88241
 (575) 393-7316 - Office
 (575) 392-2206 - Fax
 basin-surveys.com

W.O. Number: JMS 22720

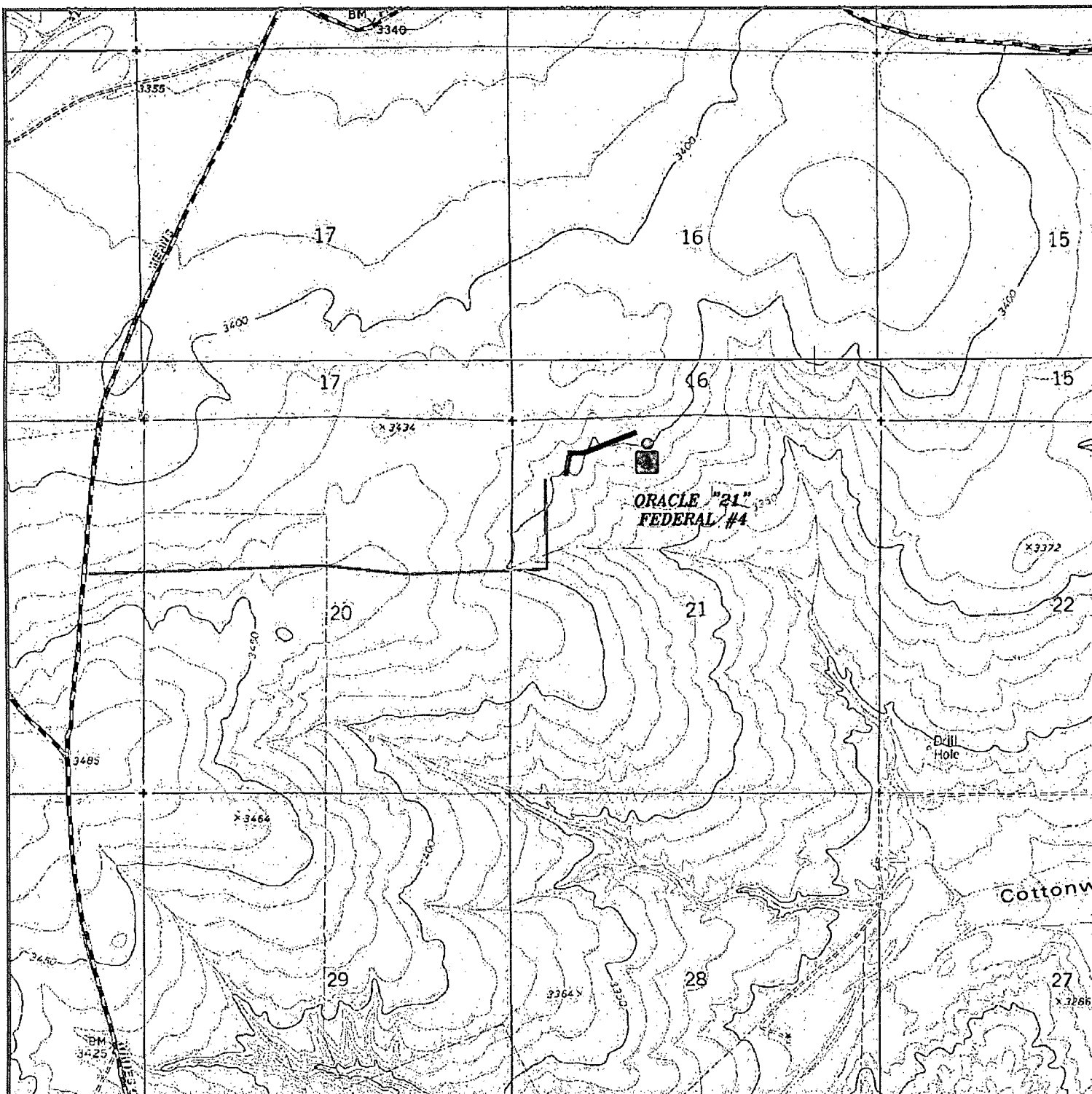
Survey Date: 08-27-2010

Scale: 1" = 2 Miles

Date: 09-15-2010

CIMAREX
ENERGY CO.
OF COLORADO

Exhibit B



ORACLE "21" FEDERAL #4

Located 400' FNL and 1980' FWL

Section 21, Township 25 South, Range 26 East,
N.M.P.M., Eddy County, New Mexico.

 Battery

basin
surveys
focused on excellence
in the oilfield

P.O. Box 1786
1120 N. West County Rd.
Hobbs, New Mexico 88241
(575) 393-7316 - Office
(575) 392-2206 - Fax
basinsurveys.com

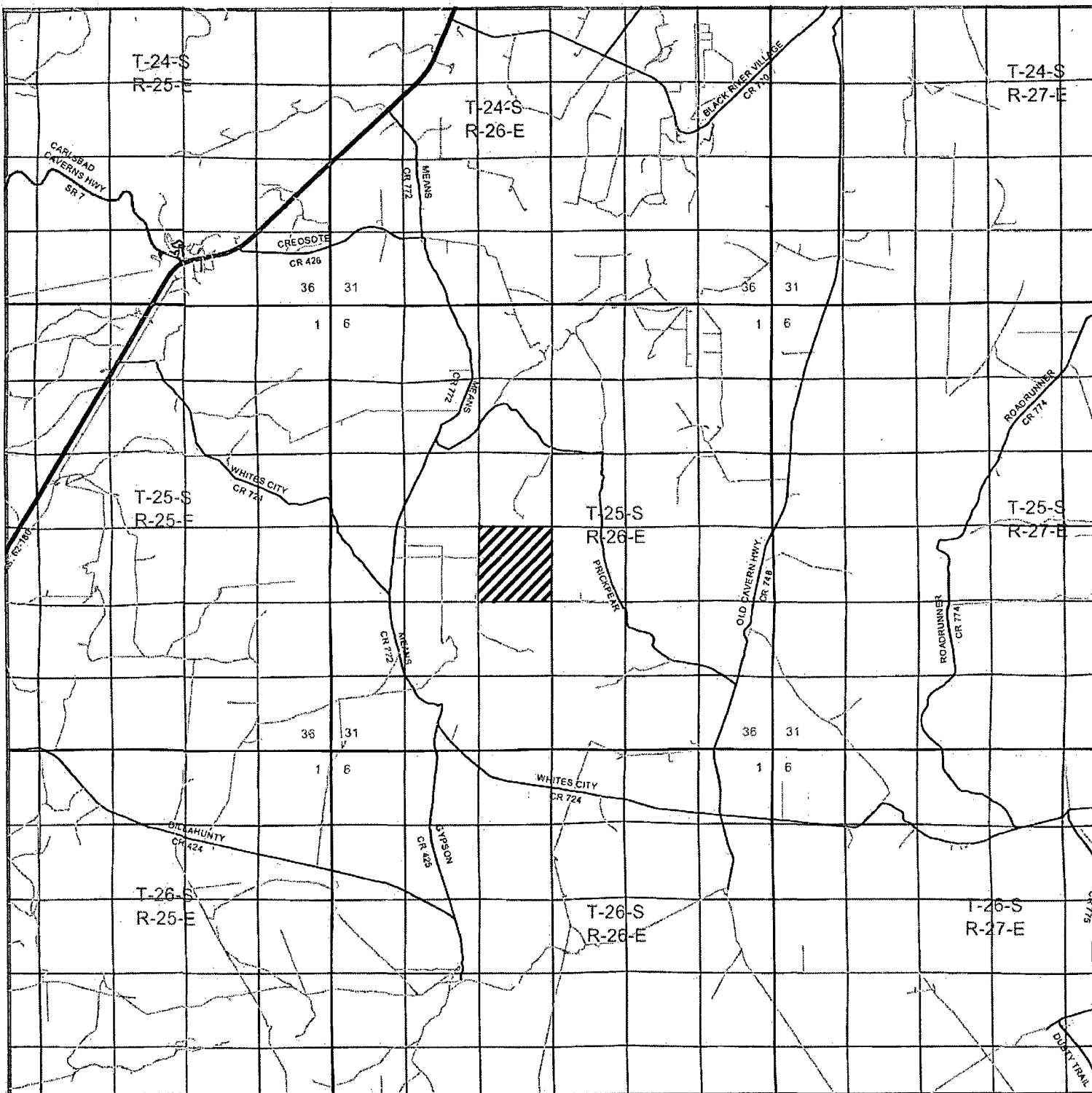
W.O. Number: JMS 22720

Survey Date: 08-27-2010

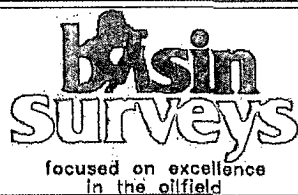
Scale: 1" = 2000'

Date: 09-15-2010

CIMAREX
ENERGY CO.
OF COLORADO



ORACLE "21" FEDERAL #4
 Located 400' FNL and 1980' FWL
 Section 21, Township 25 South, Range 26 East,
 N.M.P.M., Eddy County, New Mexico.



P.O. Box 1786
 1120 N. West County Rd.
 Hobbs, New Mexico 88241
 (575) 393-7316 - Office
 (575) 392-2206 - Fax
 basinsurveys.com

W.O. Number: JMS 22720

Survey Date: 08-27-2010

Scale: 1" = 2 Miles

Date: 09-15-2010

**CIMAREX
 ENERGY CO.
 OF COLORADO**

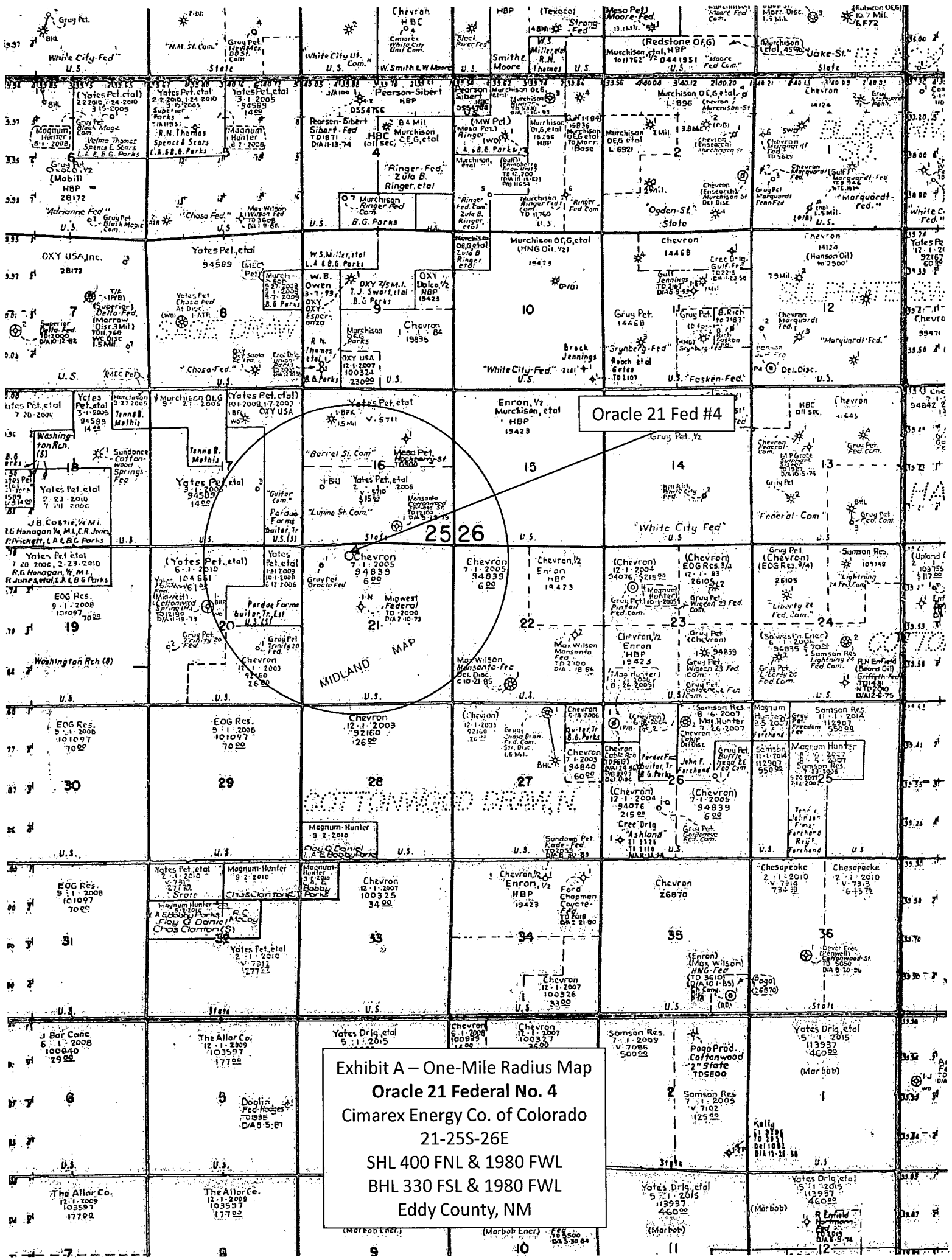
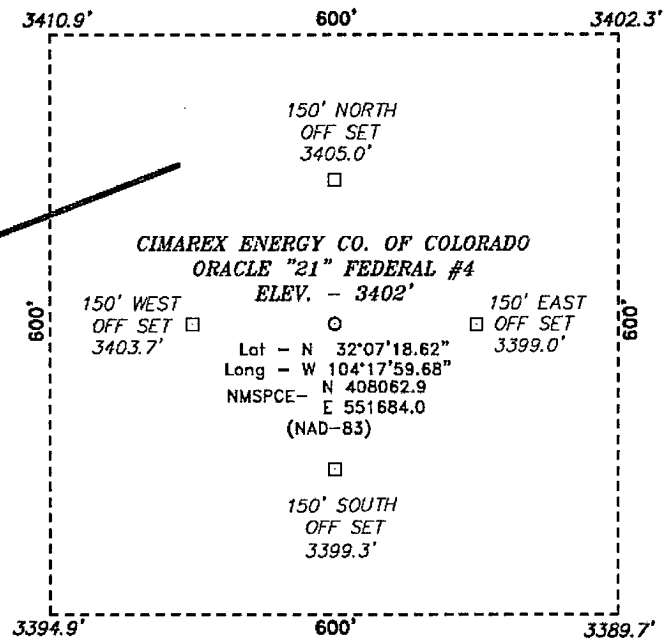
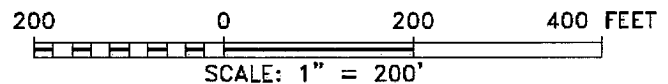


Exhibit A – One-Mile Radius Map
Oracle 21 Federal No. 4
Cimarex Energy Co. of Colorado
21-25S-26E
SHL 400 FNL & 1980 FWL
BHL 330 FSL & 1980 FWL
Eddy County, NM

NE

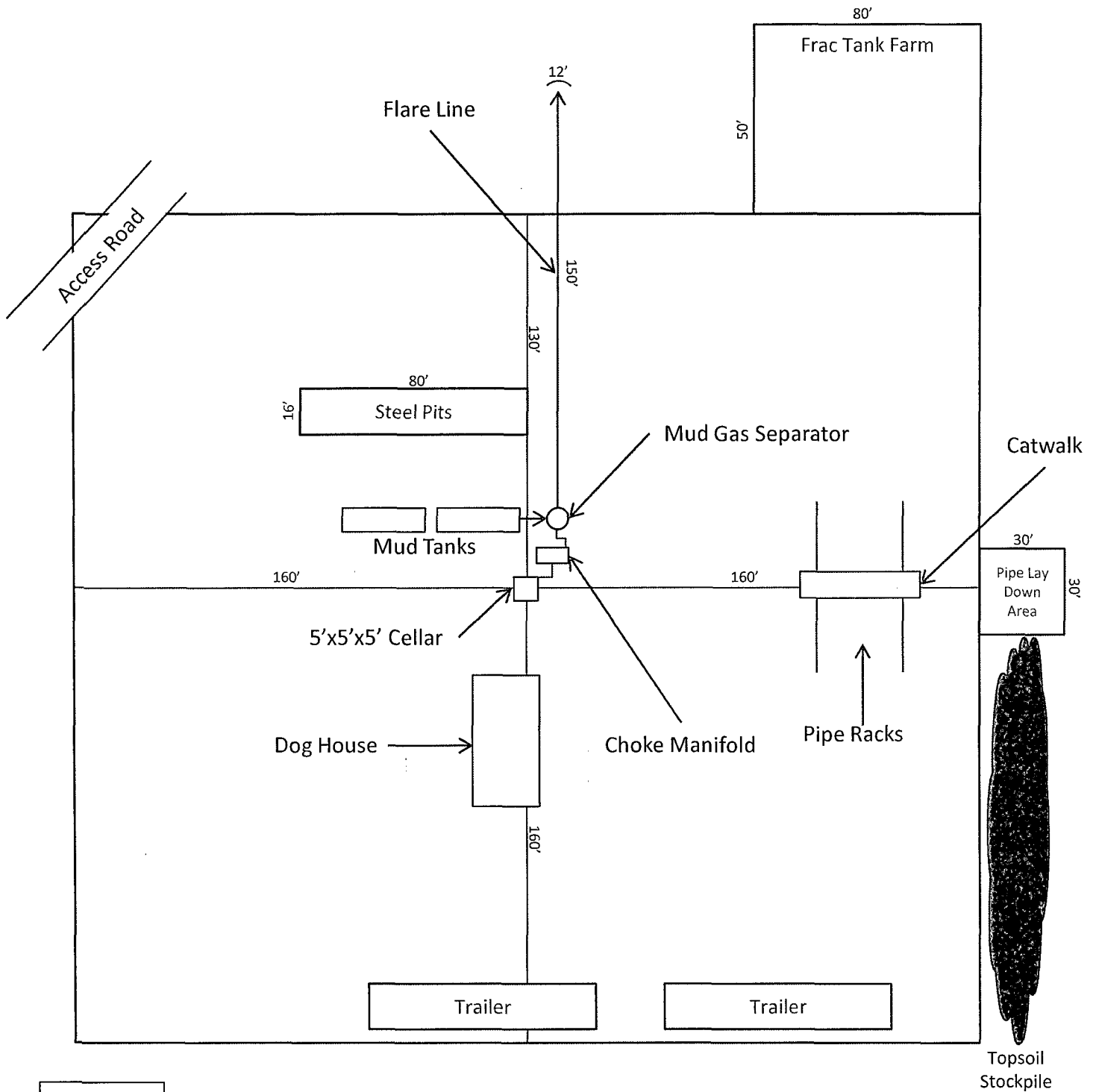


FROM THE JUNCTION OF HWY 62-180 AND MEANS ROAD, GO SOUTH ON MEANS FOR 6.6 MILES TO LEASE ROAD, ON LEASE ROAD GO EAST WINDING NORTH 1.6 MILES TO WELL PAD AND PROPOSED LEASE ROAD.



Survey Date: 08-27-2010	Sheet 1 of 1 Sheets
-------------------------	---------------------

Patriot 4



1"=50'



Exhibit D – Rig Diagram
Oracle 21 Federal No. 4
 Cimarex Energy Co. of Colorado
 21-25S-26E
 SHL 400 FNL & 1980 FWL
 BHL 330 FSL & 1980 FWL
 Eddy County, NM

Added 11-23-10

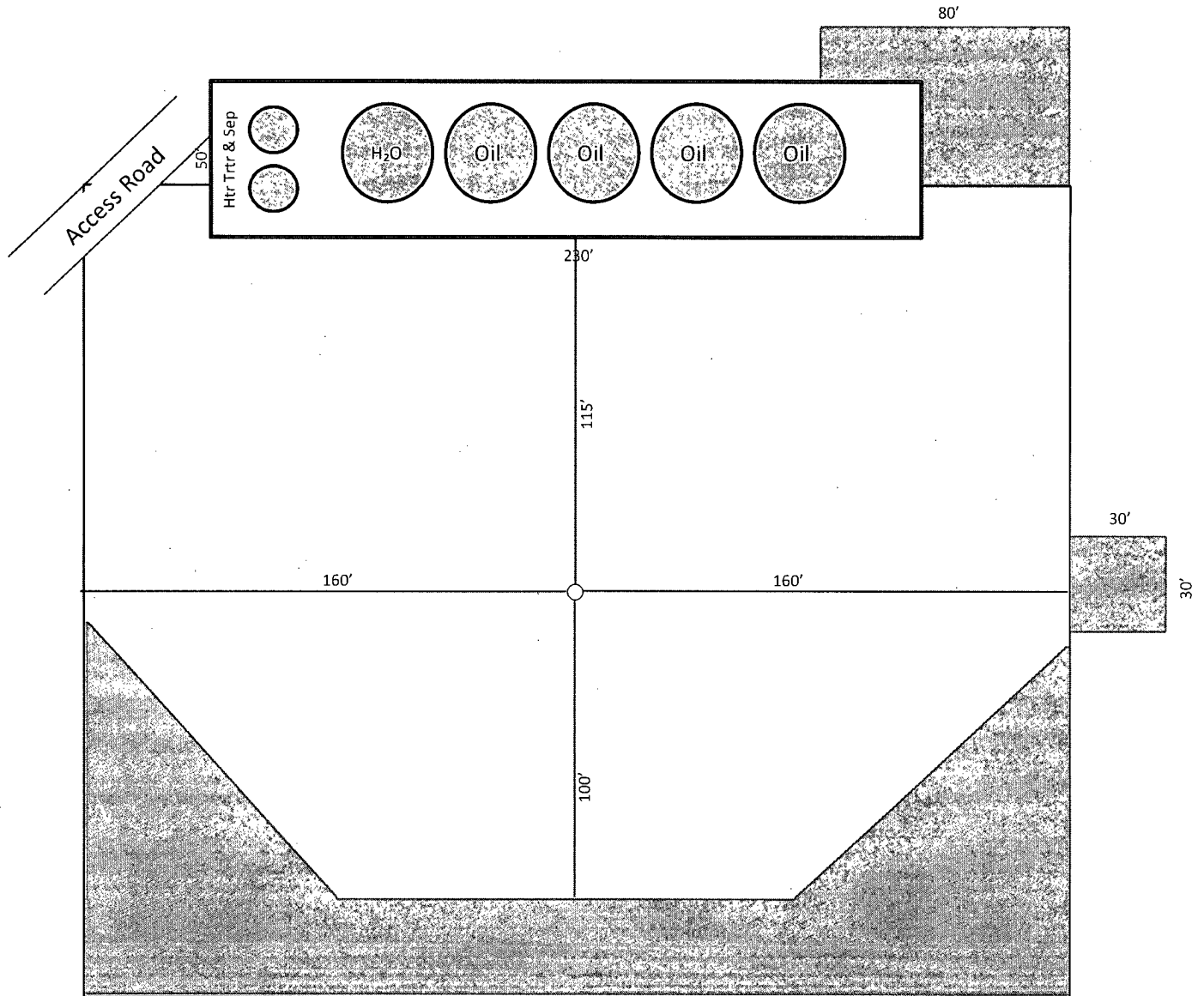


Exhibit D-1
Production Facilities Layout Diagram
Oracle 21 Federal No. 4
Cimarex Energy Co. of Colorado
21-25S-26E
SHL 400 FNL & 1980 FWL
BHL 330 FSL & 1980 FWL
Eddy County, NM

