

District I
1625 N. French Dr., Hobbs, NM 88240
District II
1301 W. Grand Avenue, Artesia, NM 88210
District III
1000 Rio Brazos Rd., Aztec, NM 87410
District IV
1220 S. St. Francis Dr., Santa Fe, NM 87505

State of New Mexico
Energy, Minerals & Natural Resources Department
OIL CONSERVATION DIVISION
1220 South St. Francis Dr.
Santa Fe, NM 87505

Form C-102
Revised October 15, 2009
Submit one copy to appropriate
District Office
☐ AMENDED REPORT

WELL LOCATION AND ACREAGE DEDICATION PLAT

¹ API Number 30-015-38605	² Pool Code 55510	³ Pool Name Scanlon Draw PARKWAY; BONE SPRING
⁴ Property Code 38432	⁵ Property Name AGATE PWU "21"	
⁷ OGRID No. 6137	⁸ Operator Name DEVON ENERGY PRODUCTION COMPANY, L.P.	⁶ Well Number 2H
		⁹ Elevation 3311.1

¹⁰ Surface Location

UL or lot no.	Section	Township	Range	Lot Idn	Feet from the	North/South line	Feet from the	East/West line	County
E	21	19 S	29 E		1800	NORTH	330	WEST	EDDY

¹¹ Bottom Hole Location If Different From Surface

UL or lot no.	Section	Township	Range	Lot Idn	Feet from the	North/South line	Feet from the	East/West line	County
H	21	19 S	29 E		1800	NORTH	330	EAST	EDDY

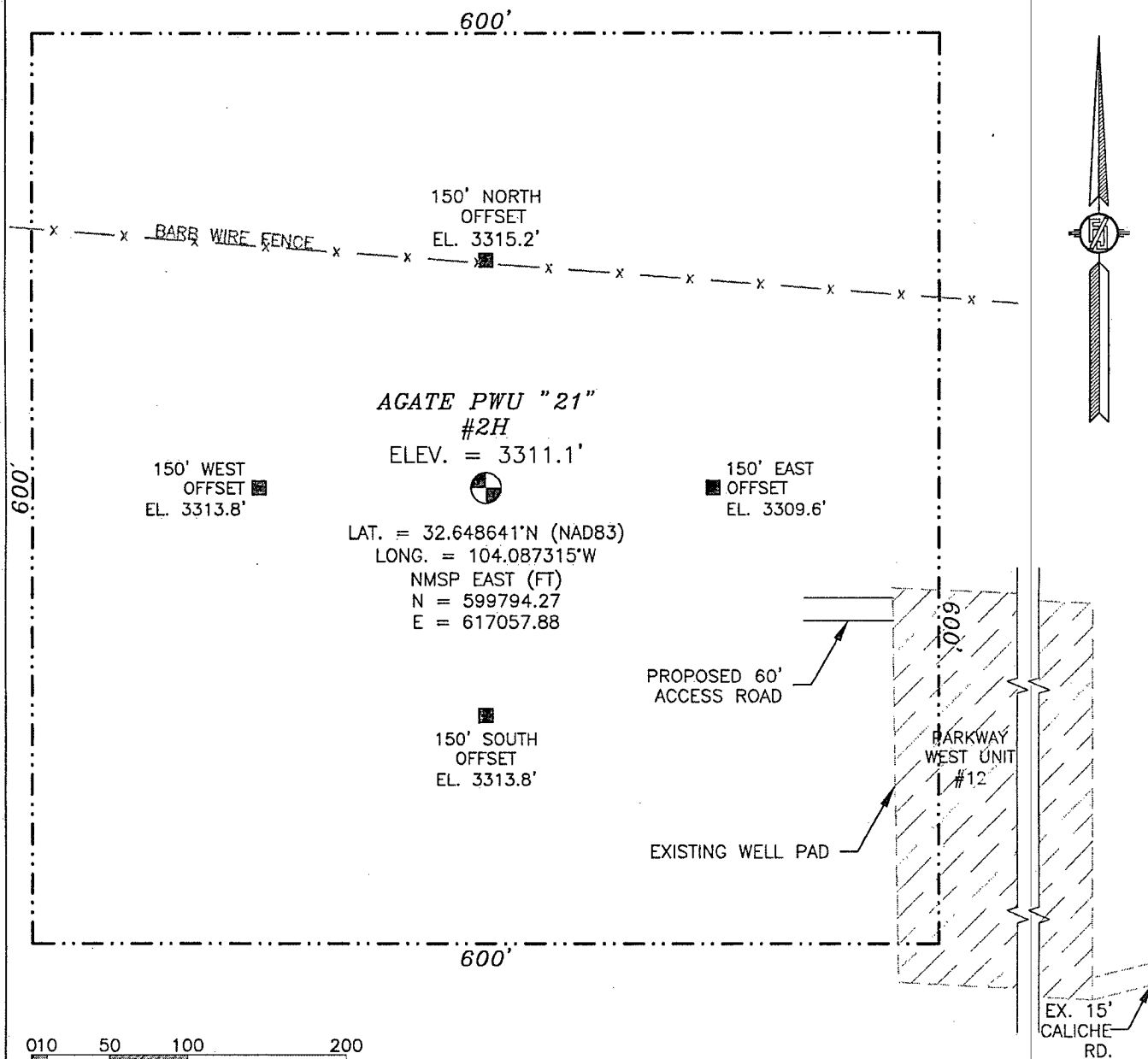
¹² Dedicated Acres 160	¹³ Joint or Infill	¹⁴ Consolidation Code	¹⁵ Order No.
---	-------------------------------	----------------------------------	-------------------------

No allowable will be assigned to this completion until all interests have been consolidated or a non-standard unit has been approved by the division.

<p>NW CORNER SEC. 21 LAT. = 32.653592°N (NAD 83) LONG. = 104.088366°W</p> <p>NMSP EAST (FT) N = 601595.30 E = 616730.14</p> <p>1800'</p> <p>SURFACE LOCATION</p> <p>330'</p> <p>AGATE PWU "21" #2H</p> <p>ELEV. = 3311.1'</p> <p>LAT. = 32.648641°N (NAD83) LONG. = 104.087315°W</p> <p>NMSP EAST (FT) N = 599794.27 E = 617057.88</p>	<p>NE CORNER SEC. 21 LAT. = 32.653546°N (NAD 83) LONG. = 104.071202°W</p> <p>NMSP EAST (FT) N = 601591.06 E = 622013.77</p> <p>1800'</p> <p>BOTTOM OF HOLE</p> <p>330'</p> <p>BOTTOM OF HOLE</p> <p>LAT. = 32.648601°N (NAD83) LONG. = 104.072322°W</p> <p>NMSP EAST (FT) N = 599790.89 E = 621673.57</p> <p>PENETRATION POINT: 1800' FNL & 330' FWL</p> <p>PRODUCING AREA</p> <p>PROJECT AREA</p> <p>SW CORNER SEC. 21 LAT. = 32.639070°N (NAD 83) LONG. = 104.088393°W</p> <p>NMSP EAST (FT) N = 596310.66 E = 616734.00</p> <p>SE CORNER SEC. 21 LAT. = 32.639037°N (NAD 83) LONG. = 104.071246°W</p> <p>NMSP (FT) N = 596311.23 E = 622013.28</p>	<p>¹⁷ OPERATOR CERTIFICATION</p> <p>I hereby certify that the information contained herein is true and complete to the best of my knowledge and belief, and that this organization either owns a working interest or unleased mineral interest in the land including the proposed bottom hole location or has a right to drill this well at this location pursuant to a contract with an owner of such a mineral or working interest, or to a voluntary pooling agreement or a compulsory pooling order heretofore entered by the division.</p> <p><i>[Signature]</i> 03/29/2011 Signature Date Printed Name: STEPHANIE A. YSASAGA</p> <p>¹⁸ SURVEYOR CERTIFICATION</p> <p>I hereby certify that the well location shown on this plat was plotted from field notes of actual surveys made by me or under my supervision, and that the same is true and correct to the best of my belief.</p> <p>DECEMBER 16, 2010 Date of Survey</p> <p><i>[Signature]</i> Signature and Seal of Professional Surveyor Certificate Number: 111000 F. JARAMILLO, PLS 12797 SURVEY NO. 347</p>
--	---	--

RECEIVED
MAR 31 2011

SECTION 21, TOWNSHIP 19 SOUTH, RANGE 29 EAST, N.M.P.M.
EDDY COUNTY, STATE OF NEW MEXICO



010 50 100 200
SCALE 1" = 100'

DIRECTIONS TO LOCATION

FROM CR 235 (CURRY COMB) & CR 210 (OLD LOCO), GO
SOUTHEAST ON CR 235 0.25 MILES, TURN RIGHT ON LEASE ROAD
AND GO 0.3 MILES TURN RIGHT AND GO WEST 0.5 MILES TO THE
EXIST. PARKWAY WEST UNIT #12 WELL AND FROM WELL THIS
LOCATION IS NORTHWEST 377'.

DEVON ENERGY PRODUCTION COMPANY, L.P.

AGATE PWU "21" #2H

LOCATED 1800 FT. FROM THE NORTH LINE
AND 330 FT. FROM THE WEST LINE OF
SECTION 21, TOWNSHIP 19 SOUTH,
RANGE 29 EAST, N.M.P.M.
EDDY COUNTY, STATE OF NEW MEXICO

DECEMBER 16, 2010

SURVEY NO. 347

MADRON SURVEYING, INC. 301 SOUTH CANAL (575) 867-5830 CARLSBAD, NEW MEXICO

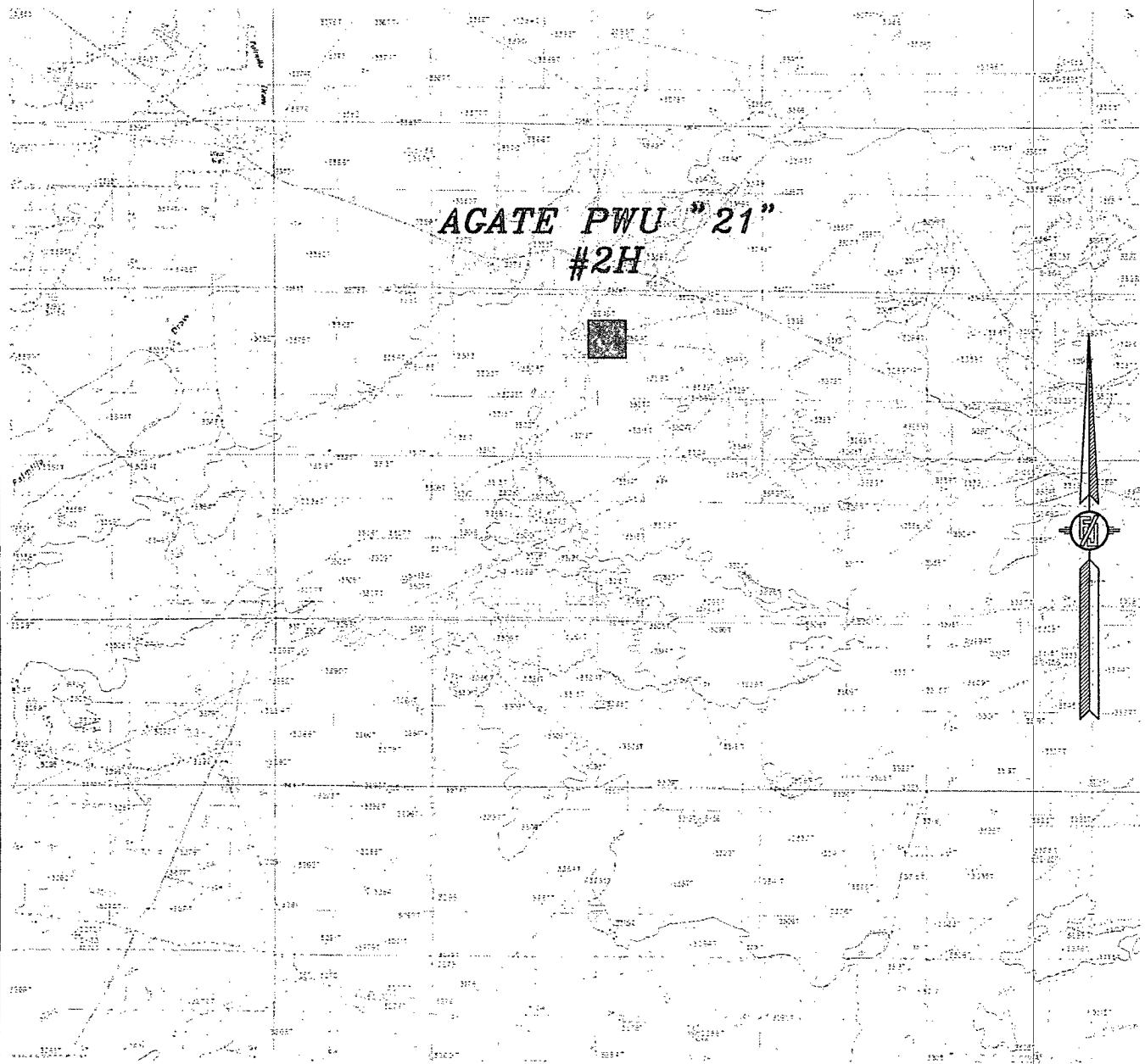
The map displays a topographic representation of the Agate PWU area. Key features include:

- Infrastructure:** A horizontal line labeled "AGATE PWU #2H" and "AGATE PWU #21" runs across the center. A dashed line labeled "PIPELINE 3" runs diagonally from the top right to the bottom right.
- Elevation and Contours:** Numerous elevation points are marked with numbers (e.g., 3370, 3365T, 3382T, 3348T, 3343T, 3337T, 3349, 3337T, 3369T, 3359T, 3366T, 3348T, 3328, 3344T, 3329T, 3329T, 3327T, 3318T, 3324T, 3346, 3354T, 3352T, 3337, 3308T, 3313T, 3305T, 3277T, 3288T, 3277T, 3300, 3313T, 3308T, 3312T, 3317, 3311T, 3302T, 3318T, 3323T, 3323T, 3308T, 3323T, 3333, 3304T, 3335T, 3345T, 3359T, 3362T, 3363T, 3375, 3359T, 3370, 3365T, 3382T, 3348T, 3343T, 3337T, 3349, 3337T, 3369T, 3359T, 3366T, 3348T, 3328, 3344T, 3329T, 3329T, 3327T, 3318T, 3324T, 3346, 3354T, 3352T, 3337, 3308T, 3313T, 3305T, 3277T, 3288T, 3277T, 3300, 3313T, 3308T, 3312T, 3317, 3311T, 3302T, 3318T, 3323T, 3323T, 3308T, 3323T, 3333, 3304T, 3335T, 3345T, 3359T, 3362T, 3363T, 3375, 3359T, 3370, 3365T, 3382T, 3348T, 3343T, 3337T, 3349, 3337T, 3369T, 3359T, 3366T, 3348T, 3328, 3344T, 3329T, 3329T, 3327T, 3318T, 3324T, 3346, 3354T, 3352T, 3337, 3308T, 3313T, 3305T, 3277T, 3288T, 3277T, 3300, 3313T, 3308T, 3312T, 3317, 3311T, 3302T, 3318T, 3323T, 3323T, 3308T, 3323T, 3333, 3304T, 3335T, 3345T, 3359T, 3362T, 3363T, 3375, 3359T, 3370, 3365T, 3382T, 3348T, 3343T, 3337T, 3349, 3337T, 3369T, 3359T, 3366T, 3348T, 3328, 3344T, 3329T, 3329T, 3327T, 3318T, 3324T, 3346, 3354T, 3352T, 3337, 3308T, 3313T, 3305T, 3277T, 3288T, 3277T, 3300, 3313T, 3308T, 3312T, 3317, 3311T, 3302T, 3318T, 3323T, 3323T, 3308T, 3323T, 3333, 3304T, 3335T, 3345T, 3359T, 3362T, 3363T, 3375, 3359T, 3370, 3365T, 3382T, 3348T, 3343T, 3337T, 3349, 3337T, 3369T, 3359T, 3366T, 3348T, 3328, 3344T, 3329T, 3329T, 3327T, 3318T, 3324T, 3346, 3354T, 3352T, 3337, 3308T, 3313T, 3305T, 3277T, 3288T, 3277T, 3300, 3313T, 3308T, 3312T, 3317, 3311T, 3302T, 3318T, 3323T, 3323T, 3308T, 3323T, 3333, 3304T, 3335T, 3345T, 3359T, 3362T, 3363T, 3375, 3359T, 3370, 3365T, 3382T, 3348T, 3343T, 3337T, 3349, 3337T, 3369T, 3359T, 3366T, 3348T, 3328, 3344T, 3329T, 3329T, 3327T, 3318T, 3324T, 3346, 3354T, 3352T, 3337, 3308T, 3313T, 3305T, 3277T, 3288T, 3277T, 3300, 3313T, 3308T, 3312T, 3317, 3311T, 3302T, 3318T, 3323T, 3323T, 3308T, 3323T, 3333, 3304T, 3335T, 3345T, 3359T, 3362T, 3363T, 3375, 3359T, 3370, 3365T, 3382T, 3348T, 3343T, 3337T, 3349, 3337T, 3369T, 3359T, 3366T, 3348T, 3328, 3344T, 3329T, 3329T, 3327T, 3318T, 3324T, 3346, 3354T, 3352T, 3337, 3308T, 3313T, 3305T, 3277T, 3288T, 3277T, 3300, 3313T, 3308T, 3312T, 3317, 3311T, 3302T, 3318T, 3323T, 3323T, 3308T, 3323T, 3333, 3304T, 3335T, 3345T, 3359T, 3362T, 3363T, 3375, 3359T, 3370, 3365T, 3382T, 3348T, 3343T, 3337T, 3349, 3337T, 3369T, 3359T, 3366T, 3348T, 3328, 3344T, 3329T, 3329T, 3327T, 3318T, 3324T, 3346, 3354T, 3352T, 3337, 3308T, 3313T, 3305T, 3277T, 3288T, 3277T, 3300, 3313T, 3308T, 3312T, 3317, 3311T, 3302T, 3318T, 3323T, 3323T, 3308T, 3323T, 3333, 3304T, 3335T, 3345T, 3359T, 3362T, 3363T, 3375, 3359T, 3370, 3365T, 3382T, 3348T, 3343T, 3337T, 3349, 3337T, 3369T, 3359T, 3366T, 3348T, 3328, 3344T, 3329T, 3329T, 3327T, 3318T, 3324T, 3346, 3354T, 3352T, 3337, 3308T, 3313T, 3305T, 3277T, 3288T, 3277T, 3300, 3313T, 3308T, 3312T, 3317, 3311T, 3302T, 3318T, 3323T, 3323T, 3308T, 3323T, 3333, 3304T, 3335T, 3345T, 3359T, 3362T, 3363T, 3375, 3359T, 3370, 3365T, 3382T, 3348T, 3343T, 3337T, 3349, 3337T, 3369T, 3359T, 3366T, 3348T, 3328, 3344T, 3329T, 3329T, 3327T, 3318T, 3324T, 3346, 3354T, 3352T, 3337, 3308T, 3313T, 3305T, 3277T, 3288T, 3277T, 3300, 3313T, 3308T, 3312T, 3317, 3311T, 3302T, 3318T, 3323T, 3323T, 3308T, 3323T, 3333, 3304T, 3335T, 3345T, 3359T, 3362T, 3363T, 3375, 3359T, 3370, 3365T, 3382T, 3348T, 3343T, 3337T, 3349, 3337T, 3369T, 3359T, 3366T, 3348T, 3328, 3344T, 3329T, 3329T, 3327T, 3318T, 3324T, 3346, 3354T, 3352T, 3337, 3308T, 3313T, 3305T, 3277T, 3288T, 3277T, 3300, 3313T, 3308T, 3312T, 3317, 3311T, 3302T, 3318T, 3323T, 3323T, 3308T, 3323T, 3333, 3304T, 3335T, 3345T, 3359T, 3362T, 3363T, 3375, 3359T, 3370, 3365T, 3382T, 3348T, 3343T, 3337T, 3349, 3337T, 3369T, 3359T, 3366T, 3348T, 3328, 3344T, 3329T, 3329T, 3327T, 3318T, 3324T, 3346, 3354T, 3352T, 3337, 3

MADRON SURVEYING, INC. 301 SOUTH CANAL
(575) 887-5830 **CARLSBAD, NEW MEXICO**

301 SOUTH CANAL
(575) 887-5830

SECTION 21, TOWNSHIP 19 SOUTH, RANGE 29 EAST, N.M.P.M.
EDDY COUNTY, STATE OF NEW MEXICO
VICINITY MAP



DEVON ENERGY PRODUCTION COMPANY, L.P.
AGATE PWU "21" #2H
LOCATED 1800 FT. FROM THE NORTH LINE
AND 330 FT. FROM THE WEST LINE OF
SECTION 21, TOWNSHIP 19 SOUTH,
RANGE 29 EAST, N.M.P.M.
EDDY COUNTY, STATE OF NEW MEXICO

NOT TO SCALE

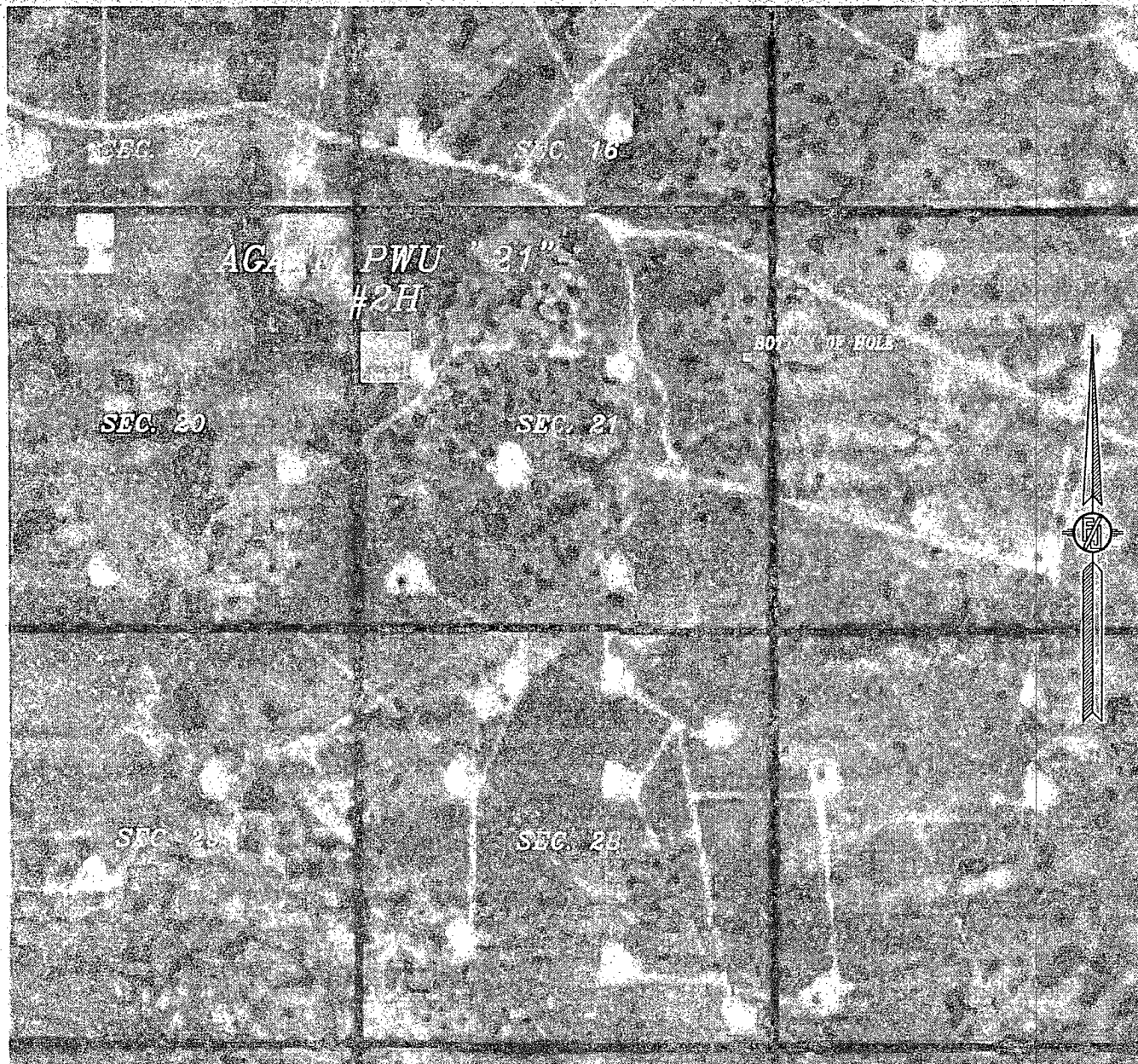
DECEMBER 16, 2010

SURVEY NO. 347

MADRON SURVEYING, INC. 301 SOUTH CANAL CARLSBAD, NEW MEXICO
(575) 887-5830

SECTION 21, TOWNSHIP 19 SOUTH, RANGE 29 EAST, N.M.P.M.
EDDY COUNTY, STATE OF NEW MEXICO

AERIAL MAP



NOT TO SCALE
AERIAL PHOTO:
GOOGLE EARTH
USDA - AUG, 2009

DEVON ENERGY PRODUCTION COMPANY, L.P.

AGATE PWU "21" #2H

LOCATED 1800 FT. FROM THE NORTH LINE
AND 330 FT. FROM THE WEST LINE OF
SECTION 21, TOWNSHIP 19 SOUTH,
RANGE 29 EAST, N.M.P.M.
EDDY COUNTY, STATE OF NEW MEXICO

DECEMBER 16, 2010

SURVEY NO. 347

MADRON SURVEYING, INC. 301 SOUTH CANAL CARLSBAD, NEW MEXICO
(575) 887-5830

SECTION LAND PLAT

County Eddy State New Mexico

Section 21 Township 19 S Range 29 E

Agate PWU 21 2 H

SHL: 1800' FNL, 330' FWL / BHL: 1800' FNL, 330' FEL

SHL			BHL
State NM K0 4251	State NM K0 3702	State NM L0 6520	