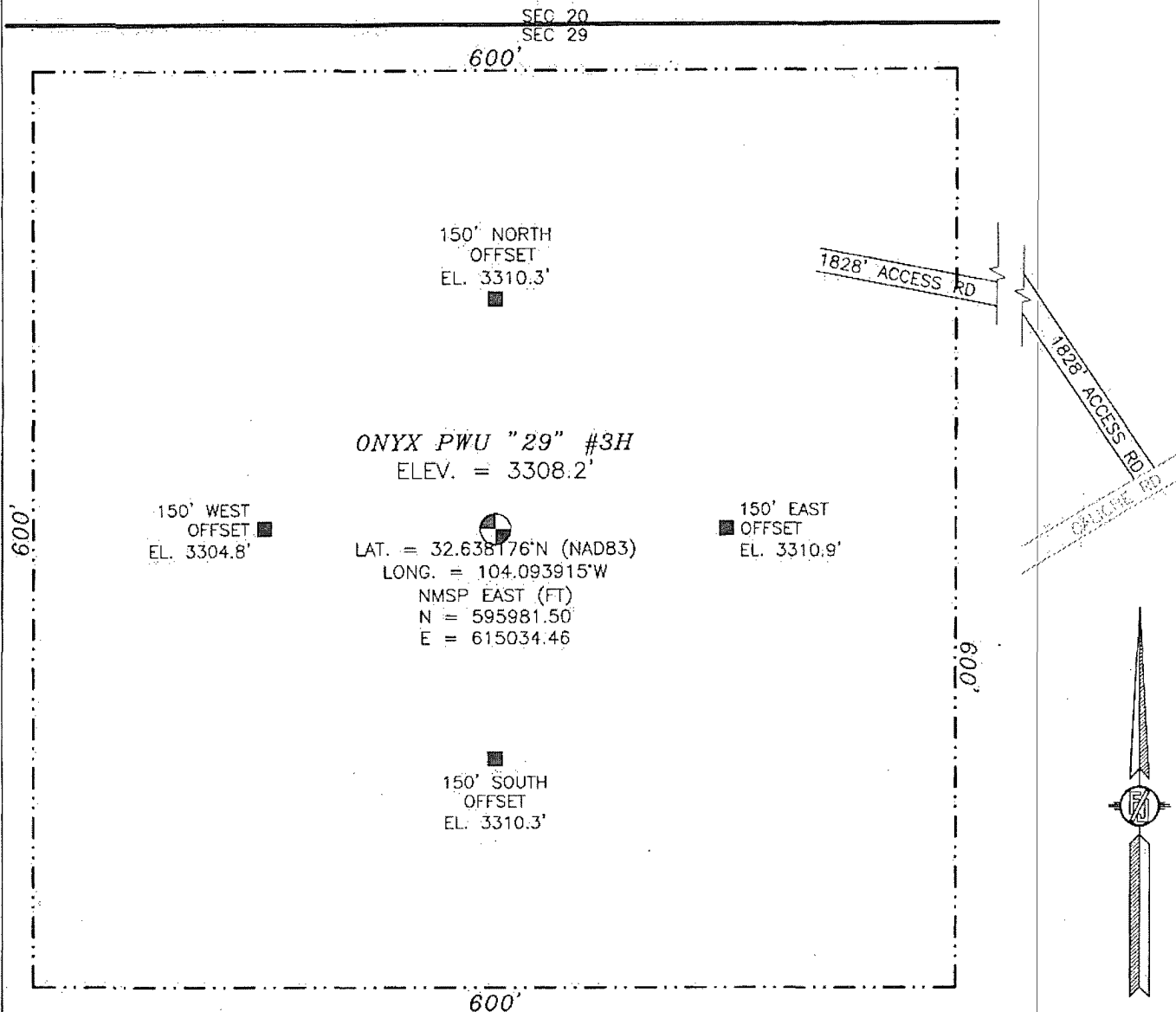




PROJECT AREA

SECTION 29, TOWNSHIP 19 SOUTH, RANGE 29 EAST, N.M.P.M.
EDDY COUNTY, STATE OF NEW MEXICO



0 10 50 100 200
SCALE 1" = 100'

DIRECTIONS TO LOCATION

FROM CR 235 (CURRY COMB) & CR 210 (OLD LOCO), GO
SOUTHEAST 0.25 MILES TURN RIGHT ON LEASE ROAD AND GO SOUTH
1.0 MILES BEND RIGHT AND GO WEST 0.45 MILES TO A PROPOSED
ROAD SURVEY AND FOLLOW FLAGS NORTHWEST 993' THEN
WEST-NORTHWEST 834' TO THE NORTHEAST CORNER OF PROPOSED
PAD FOR THIS LOCATION.

DEVON ENERGY PRODUCTION COMPANY, L.P.

ONYX PWU "29" #3H

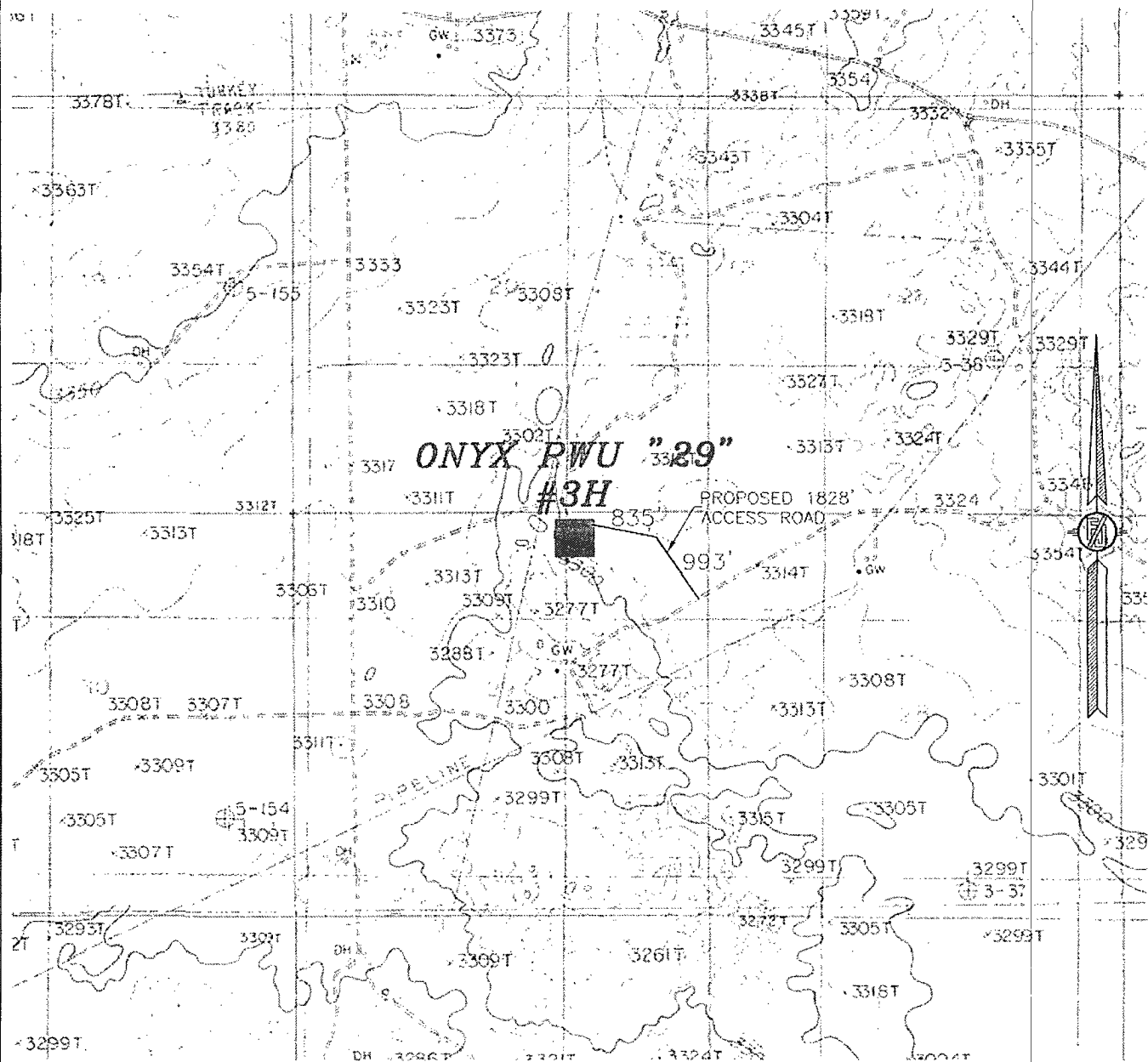
LOCATED 330 FT. FROM THE NORTH LINE
AND 1700 FT. FROM THE EAST LINE OF
SECTION 29, TOWNSHIP 19 SOUTH,
RANGE 29 EAST, N.M.P.M.
EDDY COUNTY, STATE OF NEW MEXICO

DECEMBER 16, 2010

SURVEY NO. 349

MADRON SURVEYING, INC. 301 SOUTH CANAL CARLSBAD, NEW MEXICO
(575) 687-5830

SECTION 29, TOWNSHIP 19 SOUTH, RANGE 29 EAST, N.M.P.M.
 EDDY COUNTY, STATE OF NEW MEXICO
LOCATION VERIFICATION MAP



CONTOUR INTERVAL
 ILLINOIS CAMP NE

DEVON ENERGY PRODUCTION COMPANY, L.P.

NOT TO SCALE

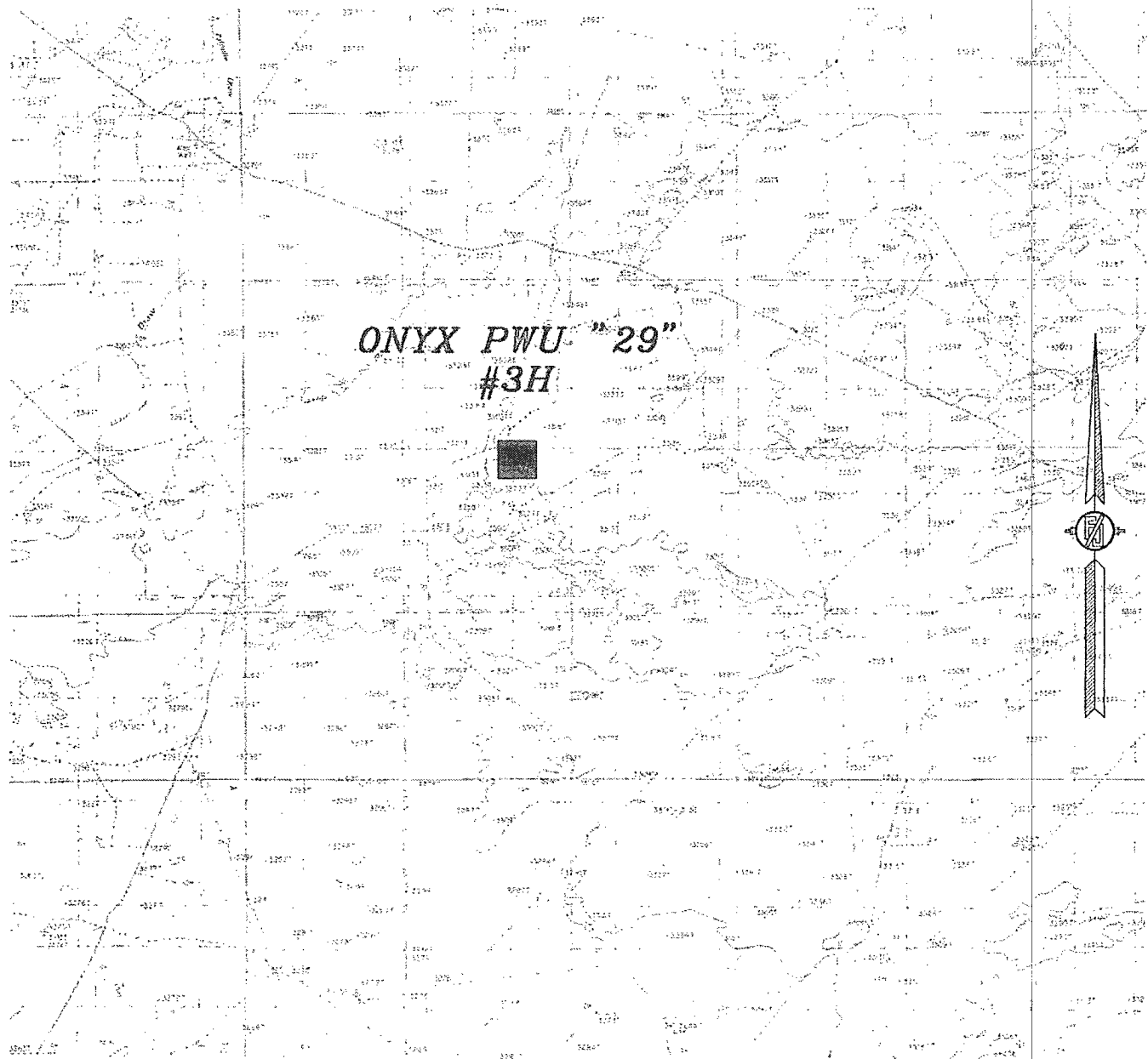
ONYX PWU "29" #3H
 LOCATED 330 FT. FROM THE NORTH LINE
 AND 1700 FT. FROM THE EAST LINE OF
 SECTION 29, TOWNSHIP 19 SOUTH,
 RANGE 29 EAST, N.M.P.M.
 EDDY COUNTY, STATE OF NEW MEXICO

DECEMBER 16, 2010

SURVEY NO. 349

MADRON SURVEYING, INC. 401 SOUTH CANAL CARLSBAD, NEW MEXICO
 (575) 887-5830

SECTION 29, TOWNSHIP 19 SOUTH, RANGE 29 EAST, N.M.P.M.
EDDY COUNTY, STATE OF NEW MEXICO
VICINITY MAP



DEVON ENERGY PRODUCTION COMPANY, L.P.

NOT TO SCALE

ONYX PWU "29" #3H

LOCATED 330 FT. FROM THE NORTH LINE
AND 1700 FT. FROM THE EAST LINE OF
SECTION 29, TOWNSHIP 19 SOUTH,
RANGE 29 EAST, N.M.P.M.
EDDY COUNTY, STATE OF NEW MEXICO

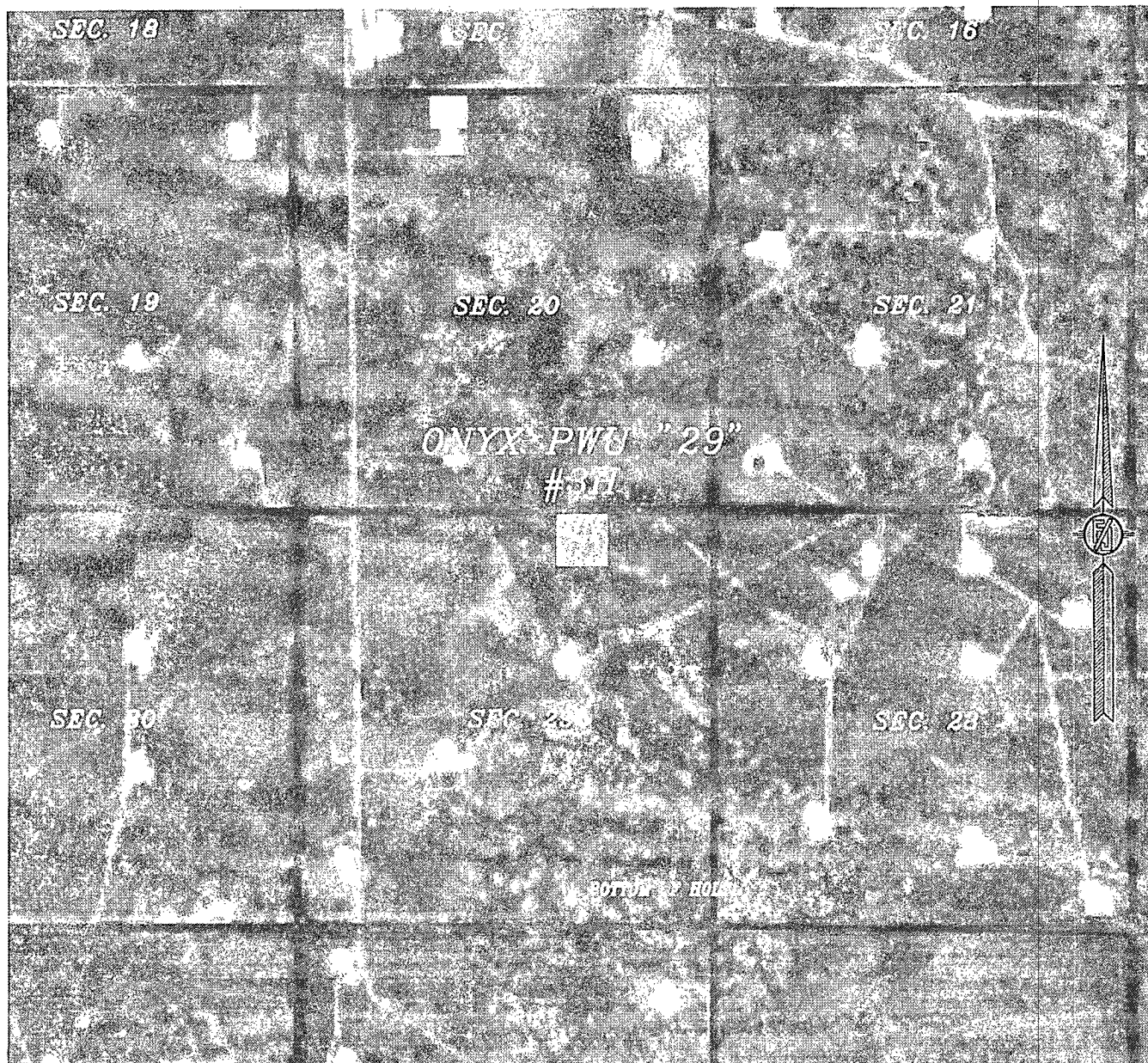
DECEMBER 16, 2010

SURVEY NO. 349

MADRON SURVEYING, INC. 301 SOUTH CANAL CARLSBAD, NEW MEXICO
(575) 887-5530

SECTION 29, TOWNSHIP 19 SOUTH, RANGE 29 EAST, N.M.P.M.
EDDY COUNTY, STATE OF NEW MEXICO

AERIAL MAP



NOT TO SCALE
AERIAL PHOTO:
GOOGLE EARTH
USDA - AUG, 2009

DEVON ENERGY PRODUCTION COMPANY, L.P.

ON YX PWU "29" #3H

LOCATED 330 FT. FROM THE NORTH LINE
AND 1700 FT. FROM THE EAST LINE OF
SECTION 29, TOWNSHIP 19 SOUTH,
RANGE 29 EAST, N.M.P.M.
EDDY COUNTY, STATE OF NEW MEXICO

DECEMBER 16, 2010

SURVEY NO. 349

MADRON SURVEYING, INC. 501 SOUTH CANAL (575) 837-5630 CARLSBAD, NEW MEXICO

SECTION LAND PLAT

Eddy County State of New Mexico
Section 29 Township 19 S Range 29 E

Onyx PWU 29 3H
SHL: 330' FNL, 1700' FEL
BHL: 330' FSL, 1700' FEL

