

District I
1625 N. French Dr., Hobbs, NM 88240
District II
1301 W. Grand Avenue, Artesia, NM 88210
District III
1000 Rio Brazos Rd., Aztec, NM 87410
District IV
1220 S. St. Francis Dr., Santa Fe, NM 87505

State of New Mexico
Energy, Minerals & Natural Resources Department
OIL CONSERVATION DIVISION
1220 South St. Francis Dr.
Santa Fe, NM 87505

Form C-102
Revised October 12, 2005
Submit to Appropriate District Office
State Lease - 4 Copies
Fee Lease - 3 Copies

AMENDED REPORT

WELL LOCATION AND ACREAGE DEDICATION PLAT

¹ API Number 30-015-38662	² Pool Code 24750	³ Pool Name FORTY NINE RIDGE, DELAWARE
⁴ Property Code 305116	⁵ Property Name Sandy FEDERAL	
⁶ OGRID No. 21712	⁸ Operator Name Strata Production Co.	⁷ Well Number 2 H ⁹ Elevation 3284

¹⁰ Surface Location

UL or lot no.	Section	Township	Range	Lot Idn	Feet from the	North/South line	Feet from the	East/West line	County
E	24	23 S	30 E		1979	NORTH	585	WEST	Eddy

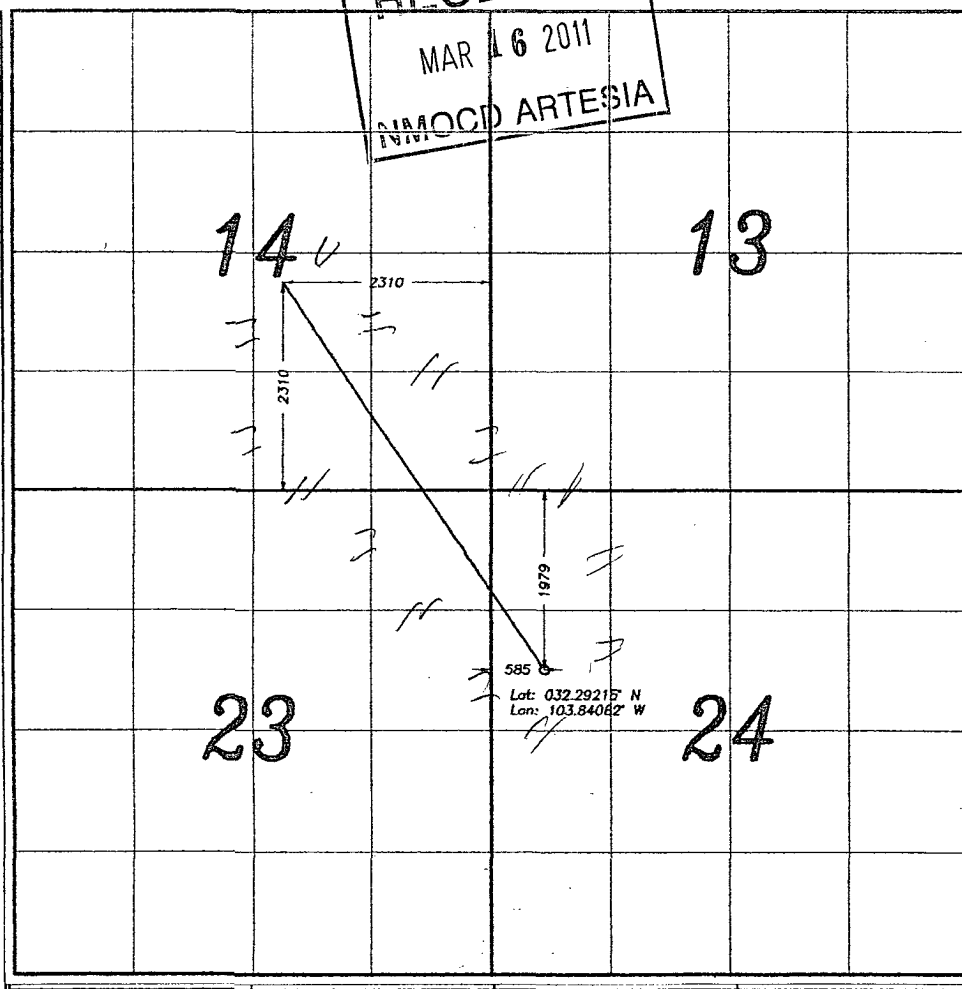
¹¹ Bottom Hole Location If Different From Surface

UL or lot no.	Section	Township	Range	Lot Idn	Feet from the	North/South line	Feet from the	East/West line	County
J	14	23 S	30 E		2310	SOUTH	2310	EAST	Eddy

¹² Dedicated Acres 240	¹³ Joint or Infill	¹⁴ Consolidation Code	¹⁵ Order No.
--------------------------------------	-------------------------------	----------------------------------	-------------------------

No allowable will be assigned to this completion until all interests have been consolidated or a non-standard unit has been approved by the division.

RECEIVED
MAR 16 2011
NMOCD ARTESIA



¹⁷ **OPERATOR CERTIFICATION**
I hereby certify that the information contained herein is true and complete to the best of my knowledge and belief, and that this organization either owns a working interest or unleased mineral interest in the land including the proposed bottom hole location or has a right to drill this well at this location pursuant to a contract with an owner of such a mineral or working interest, or to a voluntary pooling agreement or a compulsory pooling order heretofore entered by the division.

Signature: *Frank S. Morgan* Date: 11/19/2008
Printed Name: Frank S. Morgan

¹⁸ **SURVEYOR CERTIFICATION**
I hereby certify that the well location shown on this plat was plotted from field notes of actual surveys made by me or under my supervision, and that the same is true and correct to the best of my belief.

November 9, 2010
Date of Survey: _____
Signature and Seal of Professional Surveyor: *[Signature]*
Certificate Number: 8112

[Professional Seal: C. H. PATTON, PROFESSIONAL LAND SURVEYOR, STATE OF NEW MEXICO, 11/09/2010]