

DISTRICT I
1625 N. FRENCH DR., HOBBS, NM 88240

DISTRICT II
1301 W. GRAND AVENUE, ARTESIA, NM 88210

DISTRICT III
1000 RIO BRAZOS RD., AZTEC, NM 87410

DISTRICT IV
11885 S. ST. FRANCIS DR., SANTA FE, NM 87505

State of New Mexico
Energy, Minerals & Natural Resources Department
OIL CONSERVATION DIVISION
1220 South St. Francis Dr.
Santa Fe, New Mexico 87505

Form C-102
Revised July 16, 2010
Submit to Appropriate
District Office

☐ AMENDED REPORT

WELL LOCATION AND ACREAGE DEDICATION PLAT

API Number 30-015-39002	Pool Code 50270	Pool Name Penasco Draw; SA-Yeso (Assoc)
Property Code 38616	Property Name GLASS "7" D-A	Well Number 1H
OGRID No. 15742	Operator Name NEARBURG PRODUCING COMPANY	Elevation 3384'

Surface Location

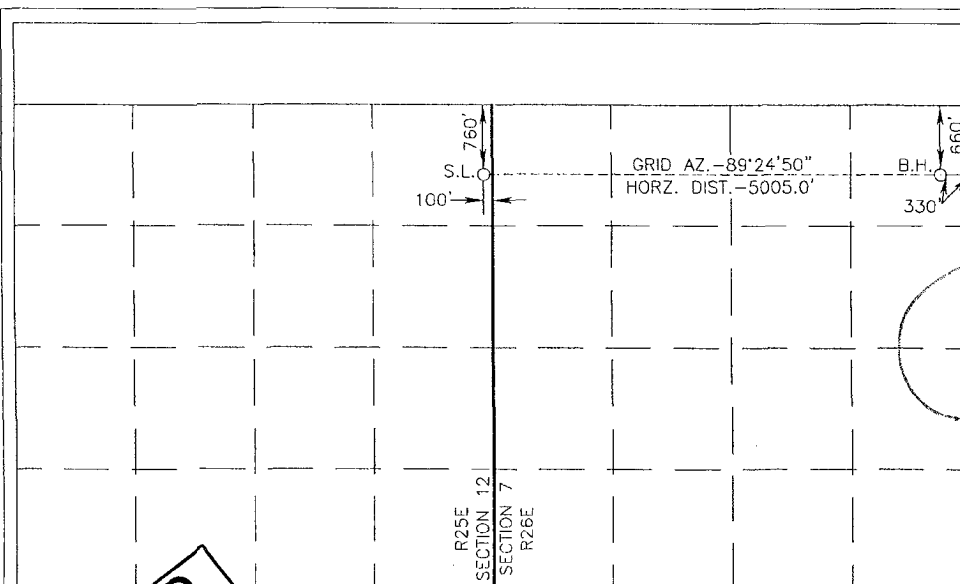
UL or lot No.	Section	Township	Range	Lot Idn	Feet from the	North/South line	Feet from the	East/West line	County
A	12	19-S	25-E		760	NORTH	100	EAST	EDDY

Bottom Hole Location If Different From Surface

UL or lot No.	Section	Township	Range	Lot Idn	Feet from the	North/South line	Feet from the	East/West line	County
A	7	19-S	26-E		760	NORTH	330	EAST	EDDY

Dedicated Acres	Joint or Infill	Consolidation Code	Order No.
159.31			

NO ALLOWABLE WILL BE ASSIGNED TO THIS COMPLETION UNTIL ALL INTERESTS HAVE BEEN CONSOLIDATED OR A NON-STANDARD UNIT HAS BEEN APPROVED BY THE DIVISION



OPERATOR CERTIFICATION

I hereby certify that the information herein is true and complete to the best of my knowledge and belief, and that this organization either owns a working interest or unleased mineral interest in the land including the proposed bottom hole location or has a right to drill this well at this location pursuant to a contract with an owner of such mineral or working interest, or to a voluntary pooling agreement or a compulsory pooling order heretofore entered by the Division.

Signature: *Terri Stathem* Date: **5/3/11**
Printed Name: **Terri Stathem**
E-mail Address: **tstathem@nearburg.com**

SURVEYOR CERTIFICATION

I hereby certify that the well location shown on this plat was plotted from field notes of actual surveys made by me or under my supervision, and that the same is true and correct to the best of my belief.

APRIL 12, 2011

Date of Survey
Signature & Seal of Professional Surveyor:

Ronald J. Eidson
Certificate Number: **3239** Gary G. Eidson 12641
Ronald J. Eidson 3239
LA-REV: 4/27/11 JWSC W.O.: 11.11.0816

RECEIVED
MAY 03 2011
NMOCD ARTESIA

GEODEIC COORDINATES
NAD 27 NME
SURFACE LOCATION
Y=611158.1 N
X=470417.6 E
LAT.=32.680136° N
LONG.=104.429479° W
BOTTOM HOLE LOCATION
Y=611209.3 N
X=475421.0 E

SCALE-1"=2000'