

DISTRICT I
1625 N. French Dr., Hobbs, NM 88240

DISTRICT II
1301 W. Grand Avenue, Artesia, NM 88210

DISTRICT III
1000 Rio Brazos Rd., Aztec, NM 87410

DISTRICT IV
1220 S. St. Francis Dr., Santa Fe, NM 87505

State of New Mexico
Energy, Minerals and Natural Resources Department

Form C-102
Revised July 16, 2010

Submit one copy to appropriate
District Office

OIL CONSERVATION DIVISION

1220 South St. Francis Dr.
Santa Fe, New Mexico 87505

WELL LOCATION AND ACREAGE DEDICATION PLAT

☐ AMENDED REPORT

API Number 30-015-39055	Pool Code 96210	Pool Name Empire; Glorieta-Yeso
Property Code 38581 ✓	Property Name PERE MARQUETTE 18 FEDERAL ✓	Well Number 9 4
OGRID No. 162683 ✓	Operator Name CIMAREX ENERGY CO. OF COLORADO ✓	Elevation 3696' ✓

Surface Location

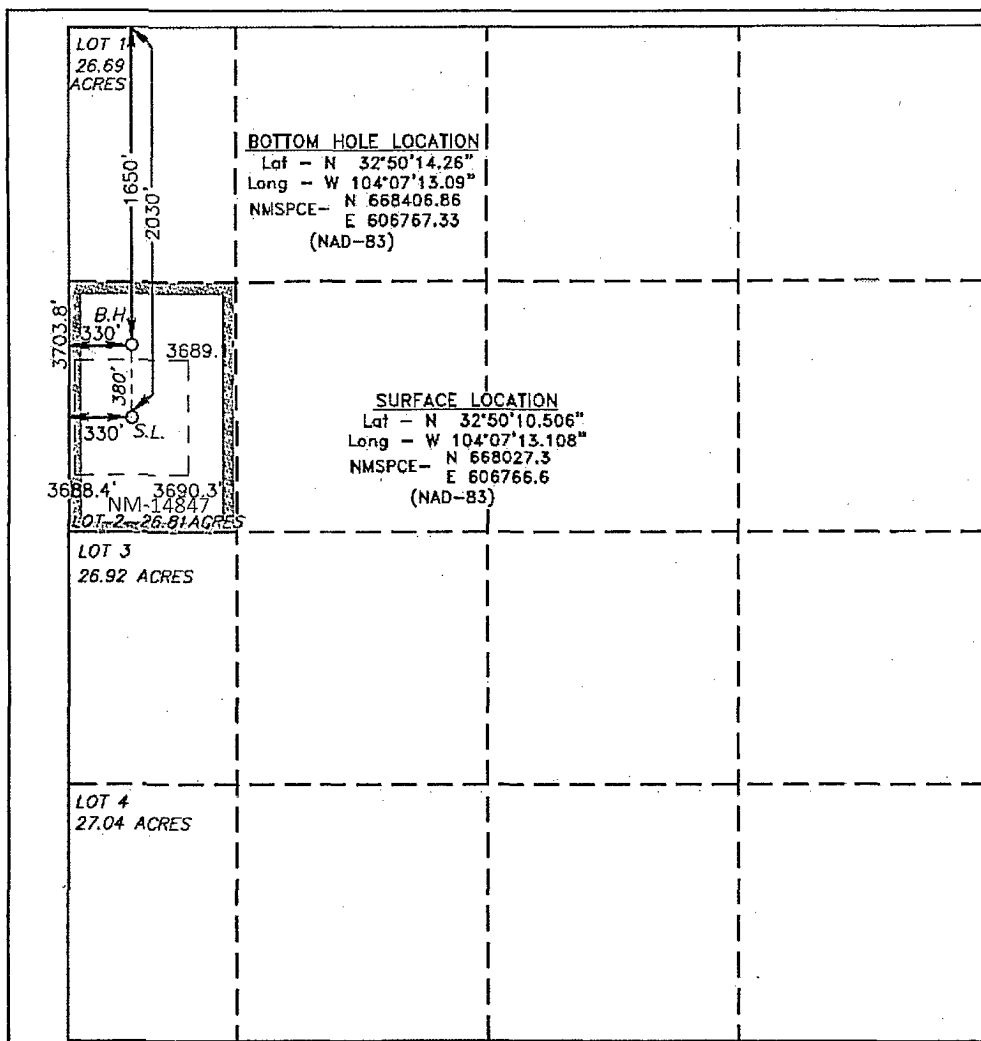
UL or lot No.	Section	Township	Range	Lot Idn	Feet from the	North/South line	Feet from the	East/West line	County
LOT 2	18	17 S	29 E		2030	NORTH	330	WEST	EDDY ✓

Bottom Hole Location If Different From Surface

UL or lot No.	Section	Township	Range	Lot Idn	Feet from the	North/South line	Feet from the	East/West line	County
LOT 2	18	17 S	29 E		1650	NORTH	330	WEST	EDDY ✓

Dedicated Acres	Joint or Infill	Consolidation Code	Order No.
26.81			NSP Pending

NO ALLOWABLE WILL BE ASSIGNED TO THIS COMPLETION UNTIL ALL INTERESTS HAVE BEEN CONSOLIDATED
OR A NON-STANDARD UNIT HAS BEEN APPROVED BY THE DIVISION



OPERATOR CERTIFICATION

I hereby certify that the information contained herein is true and complete to the best of my knowledge and belief, and that this organization either owns a working interest or unleased mineral interest in the land including the proposed bottom hole location or has a right to drill this well at this location pursuant to a contract with an owner of such a mineral or working interest, or to a voluntary pooling agreement or a compulsory pooling order heretofore entered by the division.

Zeno Farris 2/4/2011
Signature Date

Zeno Farris

Printed Name
zfarris@cimarex.com

Email Address

SURVEYOR CERTIFICATION

I hereby certify that the well location shown on this plat was plotted from field notes of actual surveys made by me or under my supervision and that the same is true and correct to the best of my belief.

Date Surveyed **2/4/2011**
Signature & Seal of Professional Surveyor
GARY L. JONES
Certificate No. **Gary L. Jones 7977**

BASIN SURVEYS 23853