

District I

1625 N. French Dr., Hobbs, NM 88240

District II

1301 W. Grand Avenue, Artesia, NM 88210

District III

1000 Rio Brazos Rd., Aztec, NM 87410

District IV

1220 S. St. Francis Dr., Santa Fe, NM 87505

State of New Mexico

Energy, Minerals & Natural Resources Department

OIL CONSERVATION DIVISION

1220 South St. Francis Dr.

Santa Fe, NM 87505

Form C-102

Revised October 15, 2009

Submit one copy to appropriate

District Office

☐ AMENDED REPORT

WELL LOCATION AND ACREAGE DEDICATION PLAT

| | | | |
|--|--|--|---|
| ¹ API Number 30-015-39071 | | ² Pool Code 96403 | ³ Pool Name WILDCAT; BONE SPRING |
| ⁴ Property Code 38600 | ⁵ Property Name SNAPPING 2 STATE | | ⁶ Well Number 4H |
| ⁷ OGRID No. 6137 | ⁸ Operator Name DEVON ENERGY PRODUCTION COMPANY, L.P. | | ⁹ Elevation 3267.1 |

¹⁰ Surface Location

| UL or lot no. | Section | Township | Range | Lot Idn | Feet from the | North/South line | Feet from the | East/West line | County |
|---------------|----------|-------------|-------------|---------|---------------|------------------|---------------|----------------|-------------|
| P | 2 | 26 S | 31 E | | 330 | SOUTH | 735 | EAST | EDDY |

¹¹ Bottom Hole Location If Different From Surface

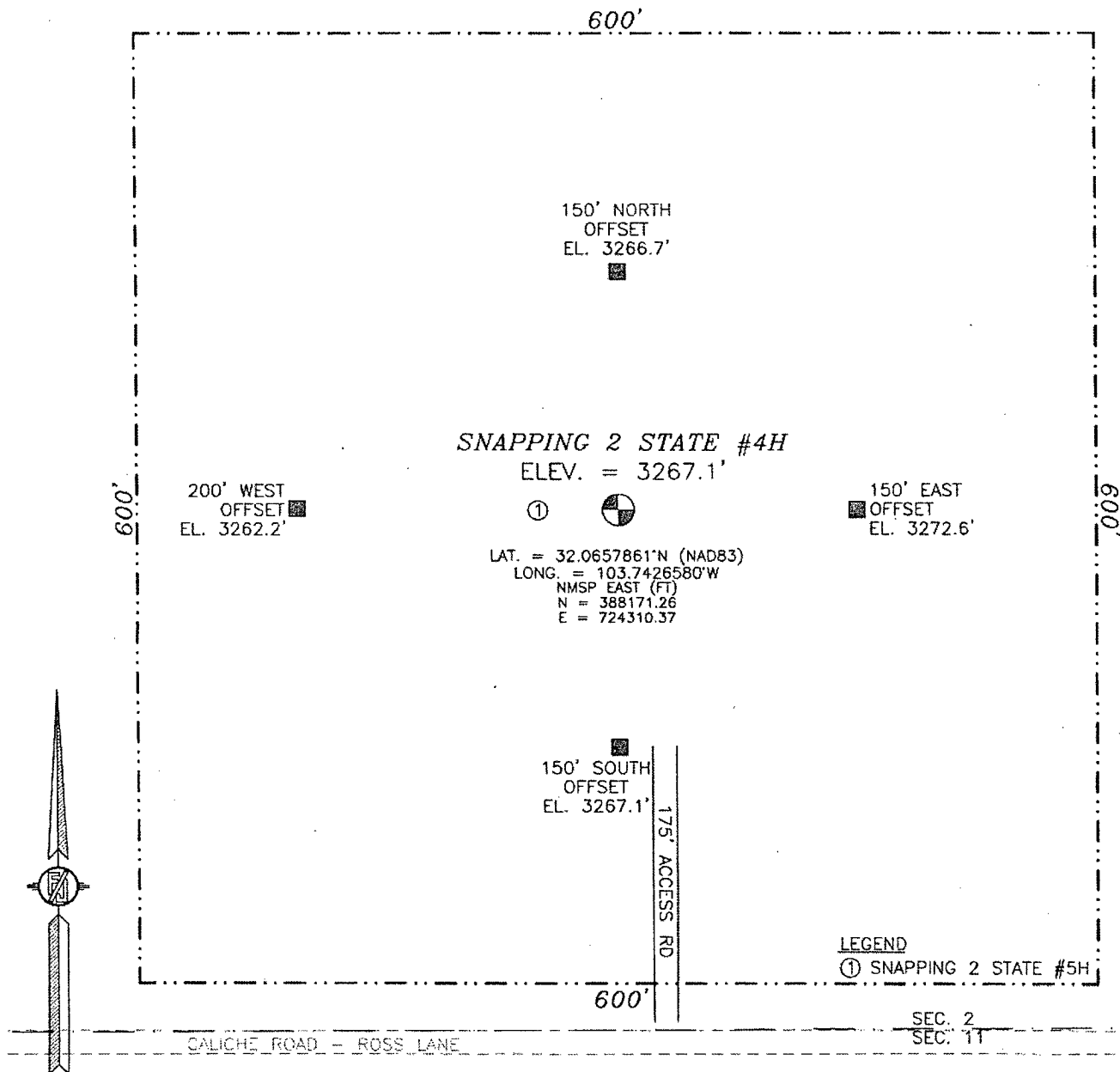
| UL or lot no. | Section | Township | Range | Lot Idn | Feet from the | North/South line | Feet from the | East/West line | County |
|---------------|----------|-------------|-------------|---------|---------------|------------------|---------------|----------------|-------------|
| A | 2 | 26 S | 31 E | | 330 | NORTH | 400 | EAST | EDDY |

| | | | |
|---|-------------------------------|----------------------------------|-------------------------|
| ¹² Dedicated Acres 160 | ¹³ Joint or Infill | ¹⁴ Consolidation Code | ¹⁵ Order No. |
|---|-------------------------------|----------------------------------|-------------------------|

No allowable will be assigned to this completion until all interests have been consolidated or a non-standard unit has been approved by the division.

| | | | | | | |
|--|--|---|--|--|--|---|
| NW CORNER SEC. 2 LAT. = 32.0794668°N LONG. = 103.7574356°W NMSP EAST (FT) N = 393123.30 E = 719706.10 | | BOTTOM OF HOLE LAT. = 32.0785918°N LONG. = 103.7415459°W NMSP EAST (FT) N = 392831.61 E = 724629.34 | | NE CORNER SEC. 2 LAT. = 32.0795016°N LONG. = 103.7402522°W NMSP EAST (FT) N = 393164.77 E = 725028.21 | | ¹⁷ OPERATOR CERTIFICATION I hereby certify that the information contained herein is true and complete to the best of my knowledge and belief, and that this organization either owns a working interest or undivided mineral interest in the land including the proposed bottom hole location or has a right to drill this well at this location pursuant to a contract with an owner of such a mineral or working interest, or to a voluntary pooling agreement or a compulsory pooling order heretofore entered by the division. Date: 5/25/11 Signature: _____ Printed Name: Judy A. Barnett Regulatory Specialist |
| SW CORNER SEC. 2 LAT. = 32.0648854°N LONG. = 103.7574141°W NMSP EAST (FT) N = 387818.91 E = 719741.07 | | SE CORNER SEC. 2 (CALC) LAT. = 32.0648778°N LONG. = 103.7402879°W NMSP EAST (FT) N = 387844.87 E = 725046.38 | | ¹⁸ SURVEYOR CERTIFICATION I hereby certify that the well location shown on this plat was plotted from field notes of actual surveys made by me or under my supervision and that the same is true and correct to the best of my belief. APRIL 7, 2011 Date of Survey: _____ Signature and Seal of Professional Surveyor: _____ Certificate Number: ELIUMON F. JARAMILLO, PLS 12797 SURVEY NO. 437-R1 | | |
| SNAPPING "2" STATE #4H ELEV. = 3267.1 LAT. = 32.0657861°N (NAD83) LONG. = 103.7426580°W NMSP EAST (FT) N = 388171.26 E = 724310.37 | | | | | | |
| SURFACE LOCATION | | | | | | |

SECTION 2, TOWNSHIP 26 SOUTH, RANGE 31 EAST, N.M.P.M.
EDDY COUNTY, STATE OF NEW MEXICO



010 50 100 200

SCALE 1" = 100'

DIRECTIONS TO LOCATION

FROM STATE HWY 128 AND CR #1 (ORLA RD) IN LEA CO. GO SOUTH
ON CR #1 (ORLA RD) 10.4 MILES TURN RIGHT ON CALICHE LEASE
RD (ROSS LANE) GO WEST 4.0 MILES WELL 300 FEET NORTH

DEVON ENERGY PRODUCTION COMPANY, L.P.
SNAPPING 2 STATE #4H

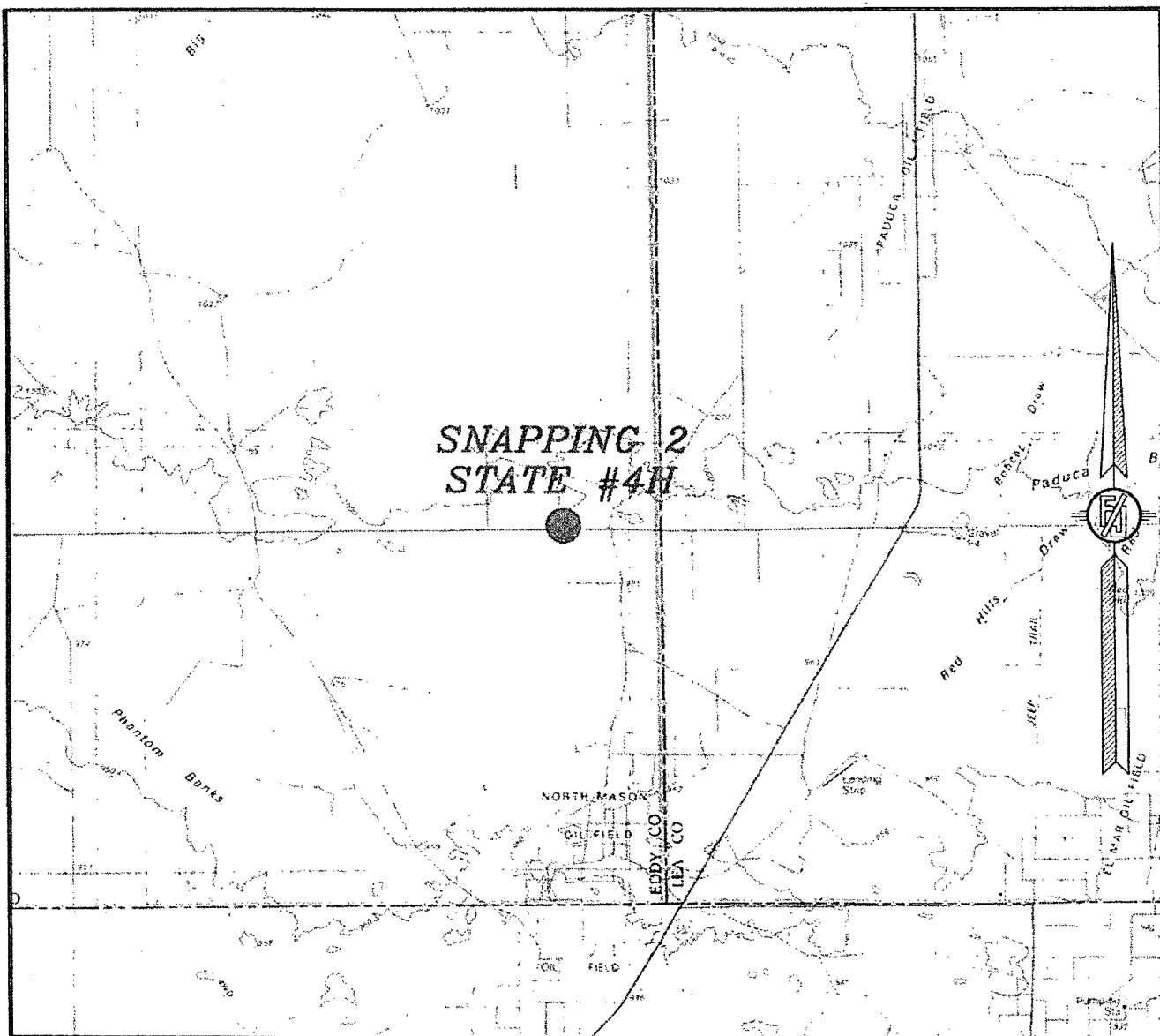
LOCATED 330 FT. FROM THE SOUTH LINE
AND 735 FT. FROM THE EAST LINE OF
SECTION 2, TOWNSHIP 26 SOUTH,
RANGE 31 EAST, N.M.P.M.
EDDY COUNTY, STATE OF NEW MEXICO

MAY 3, 2011

SURVEY NO. 437-R1

MADRON SURVEYING, INC. 301 SOUTH CANAL (575) 687-5830 CARLSBAD, NEW MEXICO

SECTION 2, TOWNSHIP 26 SOUTH, RANGE 31 EAST, N.M.P.M.
EDDY COUNTY, STATE OF NEW MEXICO
VICINITY MAP



NOT TO SCALE

DEVON ENERGY PRODUCTION COMPANY, L.P.
SNAPPING 2 STATE #4H

LOCATED 330 FT. FROM THE SOUTH LINE
AND 735 FT. FROM THE EAST LINE OF
SECTION 2, TOWNSHIP 26 SOUTH,
RANGE 31 EAST, N.M.P.M.
EDDY COUNTY, STATE OF NEW MEXICO

MAY 3, 2011

SURVEY NO. 437-R1

MADRON SURVEYING, INC. 301 SOUTH CANAL (575) 887-5830 CARLSBAD, NEW MEXICO

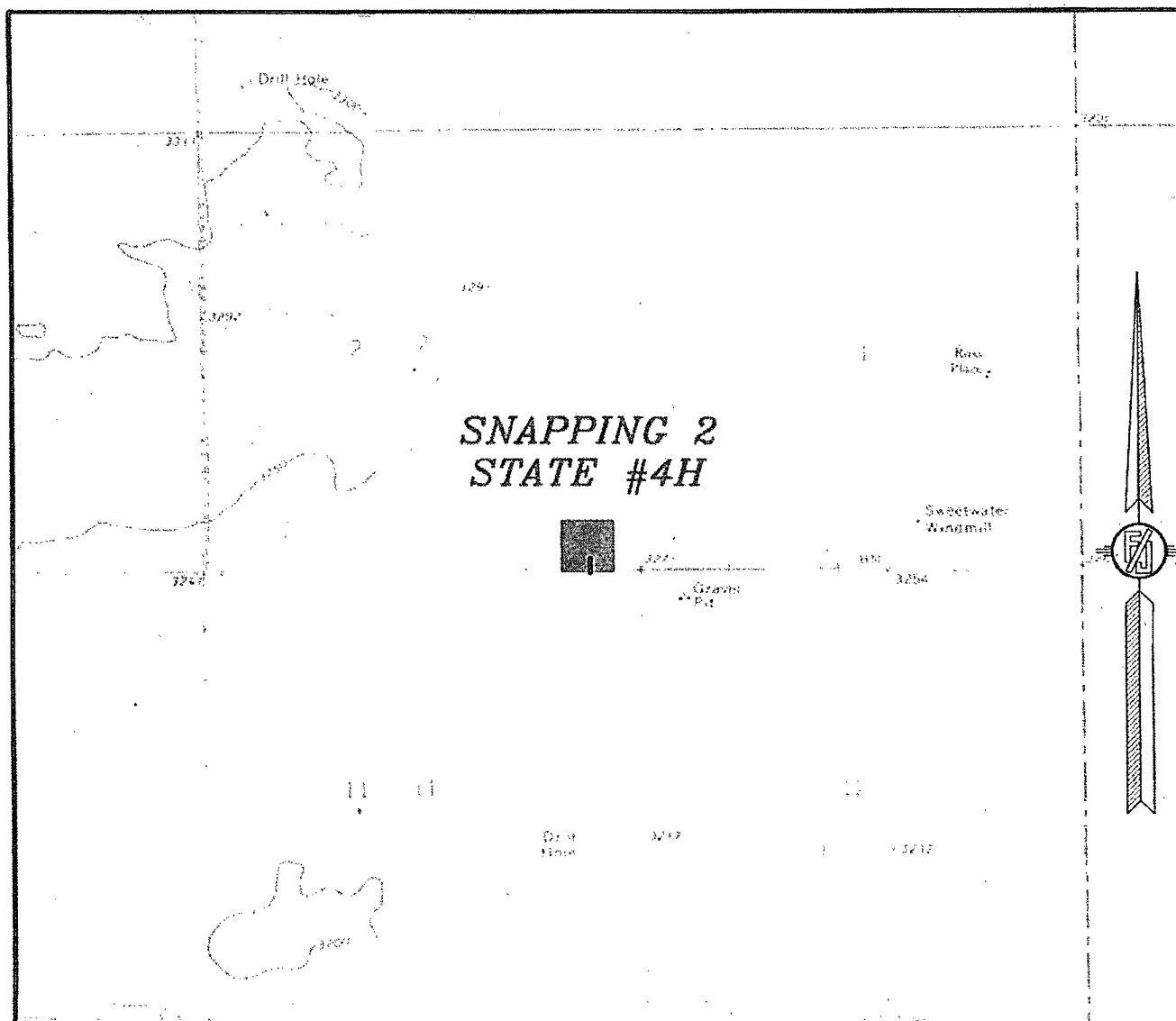
```

##                                     #      ###
#                                     #      #
# ###      #####      ## ###      ## ##      #####      #####      #      #
##      #      #      ##      ##      #      #      #      #      #      #
#      #      #####      #      #      #      #####      #      #
#      #      #      #      #      #      #      #      #      #      #
##      #      #      ##      #      #      #      #      #      #      #
## ###      ### ## #####      ### ##      #####      #      #
                                     #      #
                                     #####

```

Job : 59
 Date: 5/3/2011
 Time: 4:48:46 PM

SECTION 2, TOWNSHIP 26 SOUTH, RANGE 31 EAST, N.M.P.M.
 EDDY COUNTY, STATE OF NEW MEXICO
 LOCATION VERIFICATION MAP



CONTOUR INTERVAL:
 PHANTOM BANKS
 PADUCA BREAKS WEST

NOT TO SCALE

DEVON ENERGY PRODUCTION COMPANY, L.P.
 SNAPPING 2 STATE #4H

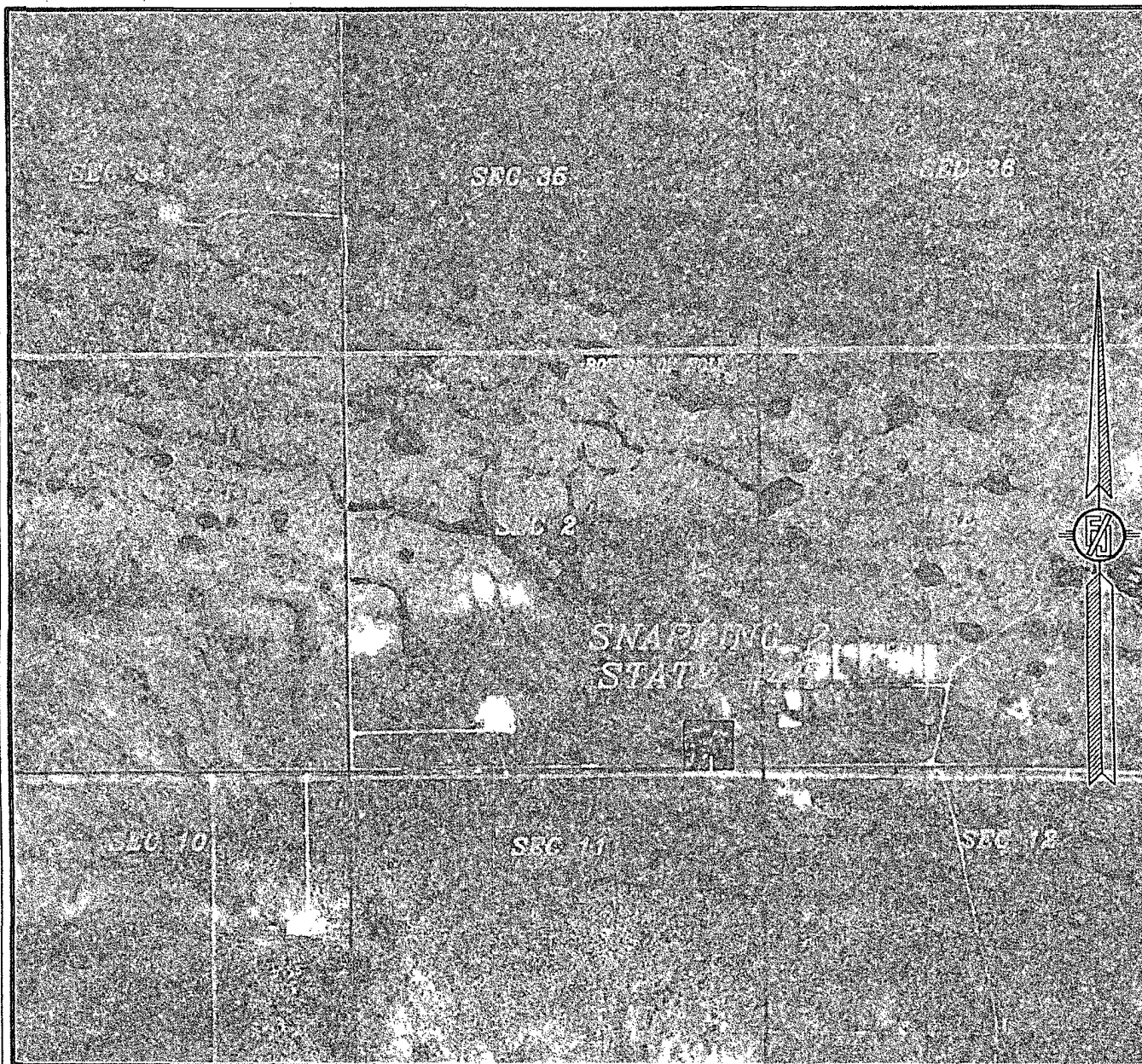
LOCATED 330 FT. FROM THE SOUTH LINE
 AND 735 FT. FROM THE EAST LINE OF
 SECTION 2, TOWNSHIP 26 SOUTH,
 RANGE 31 EAST, N.M.P.M.
 EDDY COUNTY, STATE OF NEW MEXICO

MAY 3, 2011

SURVEY NO. 437-R1

MADRON SURVEYING, INC. 301 SOUTH CANAL CARLSBAD, NEW MEXICO
 (575) 887-5830

SECTION 2, TOWNSHIP 26 SOUTH, RANGE 31 EAST, N.M.P.M.
EDDY COUNTY, STATE OF NEW MEXICO
AERIAL PHOTO



NOT TO SCALE
AERIAL PHOTO:
GOOGLE EARTH
USDA - AUG, 2009

DEVON ENERGY PRODUCTION COMPANY, L.P.
SNAPPING 2 STATE #4H

LOCATED 330 FT. FROM THE SOUTH LINE
AND 735 FT. FROM THE EAST LINE OF
SECTION 2, TOWNSHIP 26 SOUTH,
RANGE 31 EAST, N.M.P.M.
EDDY COUNTY, STATE OF NEW MEXICO

SURVEY NO. 437-R1

MAY 3, 2011

MADRON SURVEYING, INC. 301 SOUTH CANAL (575) 887-5830 CARLSBAD, NEW MEXICO