

District I
1625 N. French Dr., Hobbs, NM 88240
District II
1301 W. Grand Avenue, Artesia, NM 88210
District III
1000 Rio Brazos Rd., Aztec, NM 87410
District IV
1220 S. St. Francis Dr., Santa Fe, NM 87505

State of New Mexico
Energy, Minerals & Natural Resources Department
OIL CONSERVATION DIVISION
1220 South St. Francis Dr.
Santa Fe, NM 87505

Form C-102
Revised October 15, 2009
Submit one copy to appropriate
District Office
☐ AMENDED REPORT

WELL LOCATION AND ACREAGE DEDICATION PLAT

¹ API Number 30-015-38044	² Pool Code 53805	³ Pool Name Sand Dunes	⁴ Property Code 19396	⁵ Property Name TODD "36B" STATE	⁶ Well Number 20H
⁷ OGRID No. 6137	⁸ Operator Name DEVON ENERGY PRODUCTION COMPANY, L.P.			⁹ Elevation 3516.4	

¹⁰ Surface Location

UL or lot no.	Section	Township	Range	Lot Idn	Feet from the	North/South line	Feet from the	East/West line	County
B	36	23 S	31 E		10	NORTH	2385	EAST	EDDY

¹¹ Bottom Hole Location If Different From Surface

UL or lot no.	Section	Township	Range	Lot Idn	Feet from the	North/South line	Feet from the	East/West line	County
P	36	23 S	31 E		363	SOUTH	330	EAST	EDDY

¹² Dedicated Acres 240	¹³ Joint or Infill	¹⁴ Consolidation Code	¹⁵ Order No.
---	-------------------------------	----------------------------------	-------------------------

No allowable will be assigned to this completion until all interests have been consolidated or a non-standard unit has been approved by the division.

<p>NW CORNER SEC 36 LAT. = 32°16'05.93"N LONG. = 103°44'24.27"W NMSP EAST (FT) N = 461832.84 E = 729992.42</p>		<p>SURFACE LOCATION</p>		<p>TODD "36B" STATE #20H ELEV. = 3516.4' LAT. = 32°16'05.840" N LONG. = 103°43'50.577" W NMSP EAST (FT) (NAD83) N = 461808.60 E = 727607.43</p>		<p>NE CORNER SEC 36 LAT. = 32°16'05.95"N LONG. = 103°43'22.80"W NMSP EAST (FT) N = 461801.94 E = 724713.65</p>	
<p>RECEIVED APR 18 2011 NMCD ARTESIA</p>		<p>SW CORNER SEC 36 LAT. = 32°15'13.72"N LONG. = 103°44'24.29"W NMSP EAST (FT) N = 456524.08 E = 724740.90</p>		<p>SE CORNER SEC 36 LAT. = 32°15'13.72"N LONG. = 103°43'22.82"W NMSP EAST (FT) N = 456553.44 E = 730020.88</p>		<p>NMSP EAST (FT) N = 456881.72 E = 729689.05 (NAD83) LAT. = 32°15'16.982" N LONG. = 103°43'26.665" W</p>	
						<p>BOTTOM OF HOLE 330'</p>	

17 OPERATOR CERTIFICATION
I hereby certify that the information contained herein is true and complete to the best of my knowledge and belief, and that this organization either owns a working interest or unleased mineral interest in the land including the proposed bottom hole location or has a right to drill this well at this location pursuant to a contract with an owner of such a mineral or working interest, or to a voluntary pooling agreement or a compulsory pooling order heretofore entered by the division.

Signature: *Judy A. Barnett* Date: 4/14/11
Printed Name: Judy A. Barnett Regulatory Specialist

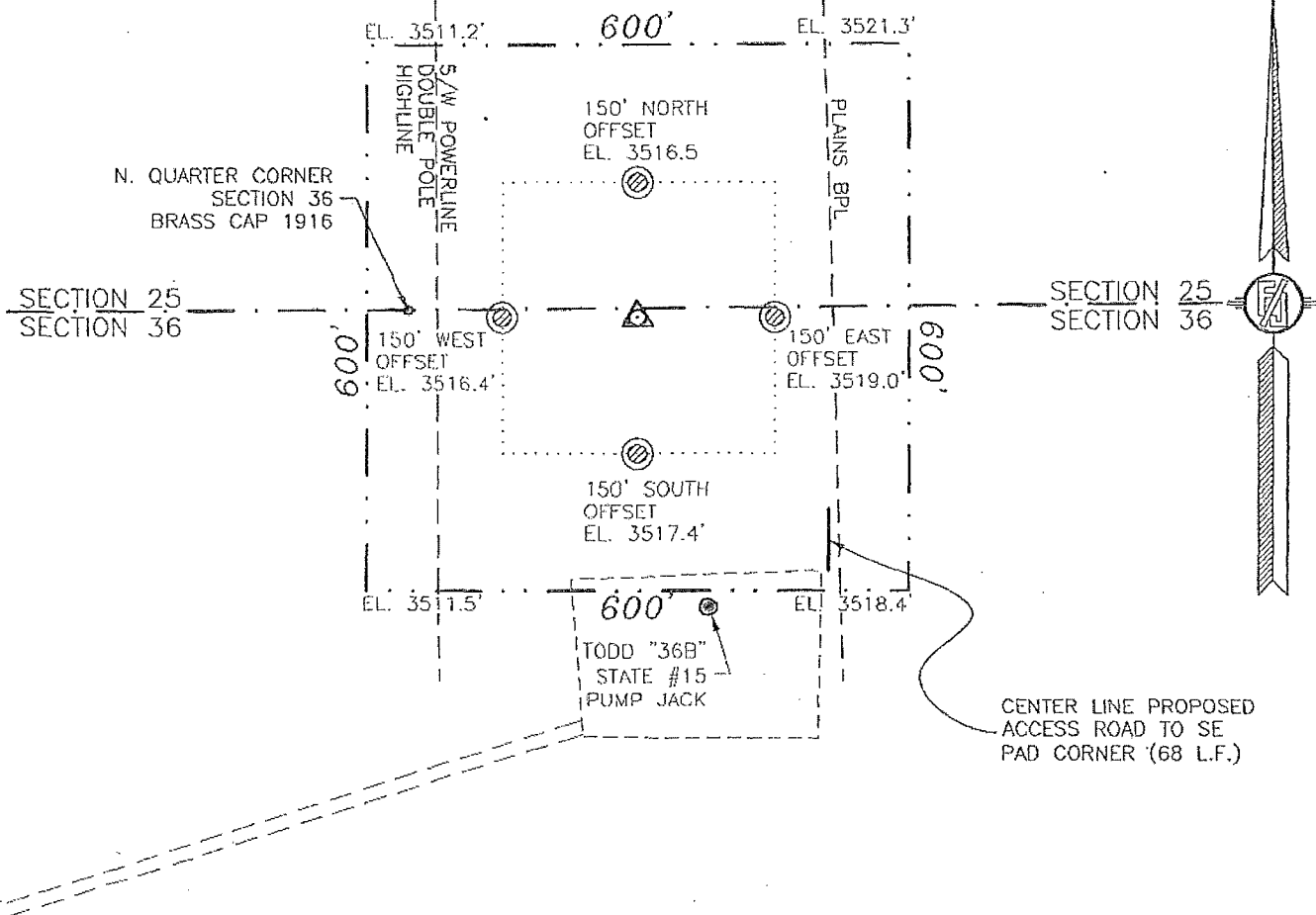
18 SURVEYOR CERTIFICATION
I hereby certify that the well location shown on this plat was plotted from field notes of actual surveys made by me or under my supervision, and that the same is true and correct to the best of my belief.

JUNE 14, 2011
Date of Survey

Signature of Professional Surveyor: *[Signature]*
Certificate Number: 12797
SURVEY NO. 128

SECTION 36, TOWNSHIP 23 SOUTH, RANGE 31 EAST, N.M.P.M.
EDDY COUNTY, STATE OF NEW MEXICO

TODD "36B" STATE #20H
ELEV. = 3516.4'
LAT. = 32°16'05.840" N
LONG. = 103°43'50.577" W



020 100 200 400
SCALE 1" = 200'

DIRECTIONS TO LOCATION

FROM HWY. #128 AND CO. RD. #798 (RED ROAD, PAVED)
GO NORTH ON RED ROAD 1.0 MILES AND TURN RIGHT ON
CALICHE LEASE ROAD AND GO EAST 0.6 MILES TO THE
EXISTING (DEVON) TODD "36B" STATE #15 WELL AND
LOCATION IS 327' NORTH-NORTHWEST.

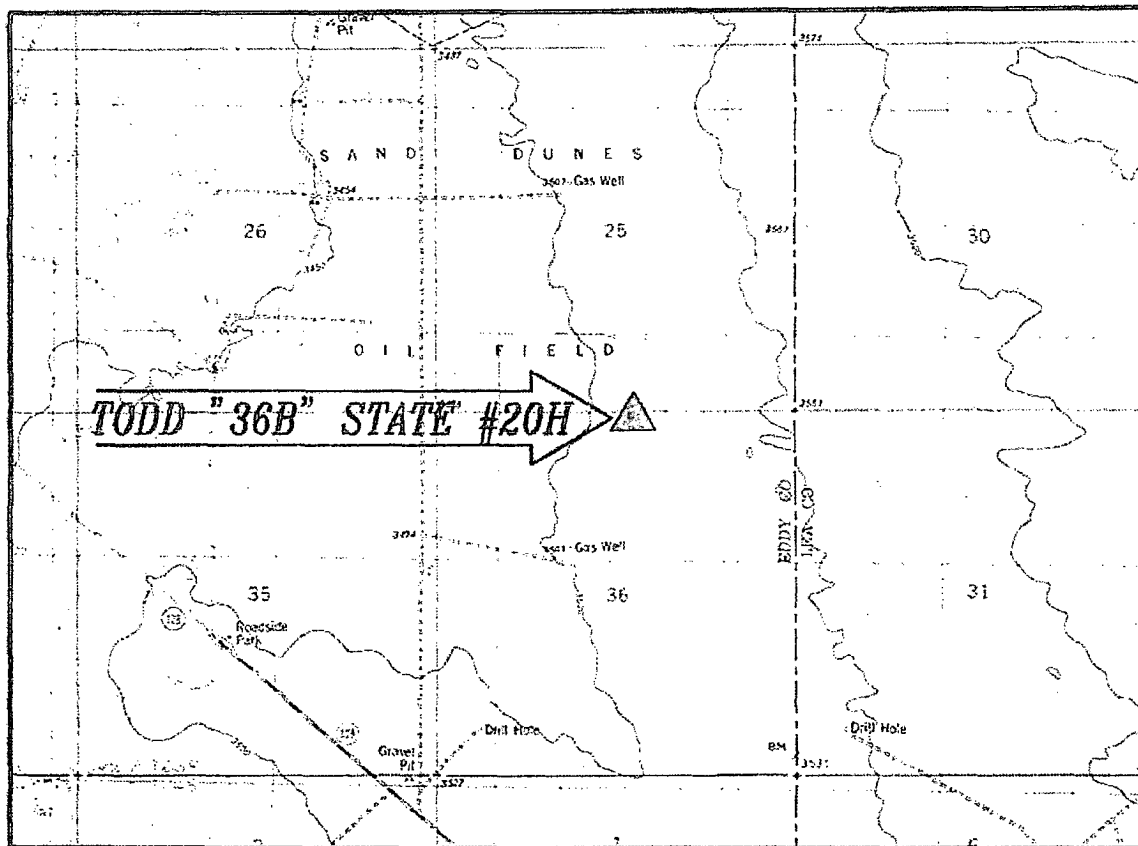
DEVON ENERGY PRODUCTION COMPANY, L.P.
TODD "36B" STATE #20H
LOCATED 10 FT. FROM THE NORTH LINE AND
2385 FT. FROM THE EAST LINE OF SECTION
36, TOWNSHIP 23 SOUTH,
RANGE 31 EAST, N.M.P.M.
EDDY COUNTY, STATE OF NEW MEXICO

JUNE 14, 2010

SURVEY NO. 128

MADRON SURVEYING, INC. 301 SOUTH CANAL CARLSBAD, NEW MEXICO
(575) 887-5830

SECTION 36, TOWNSHIP 23 SOUTH, RANGE 31 EAST, N.M.P.M.
 EDDY COUNTY, STATE OF NEW MEXICO
LOCATION VERIFICATION MAP



CONTOUR INTERVAL:
 BOOT LEG RIDGE

NOT TO SCALE

DIRECTIONS TO LOCATION

FROM HWY. #128 AND CO. RD. #798 (RED ROAD, PAVED) GO NORTH ON RED ROAD 1.0 MILES AND TURN RIGHT ON CALICHE LEASE ROAD AND GO EAST 0.6 MILES TO THE EXISTING (DEVON) TODD "36B" STATE #15 WELL AND LOCATION IS 327' NORTH-NORTHWEST.

SEC. 36 TWP. 23-S RGE. 31-E
 SURVEY N.M.P.M.
 COUNTY EDDY STATE NEW MEXICO
 DESCRIPTION 10' FNL & 2385' FEL
 ELEVATION 3516.4'
 OPERATOR DEVON ENERGY PRODUCTION COMPANY, LP
 LEASE TODD

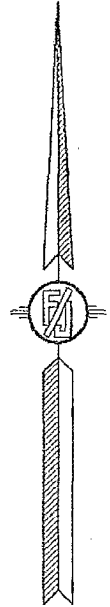
DEVON ENERGY PRODUCTION COMPANY, L.P.
 TODD "36B" STATE #20H
 LOCATED 10 FT. FROM THE NORTH LINE AND
 2385 FT. FROM THE EAST LINE OF SECTION
 36, TOWNSHIP 23 SOUTH,
 RANGE 31 EAST, N.M.P.M.
 EDDY COUNTY, STATE OF NEW MEXICO

JUNE 14, 2010

SURVEY NO. 128

MADRON SURVEYING, INC. 301 SOUTH CANAL (575) 887-5830 CARLSBAD, NEW MEXICO

VICINITY MAP



NOT TO SCALE

DEVON ENERGY PRODUCTION COMPANY, L.P.
TODD "36B" STATE #20H
LOCATED 10 FT. FROM THE NORTH LINE AND
2385 FT. FROM THE EAST LINE OF SECTION
36, TOWNSHIP 23 SOUTH,
RANGE 31 EAST, N.M.P.M.
EDDY COUNTY, STATE OF NEW MEXICO

SURVEY NO. 128

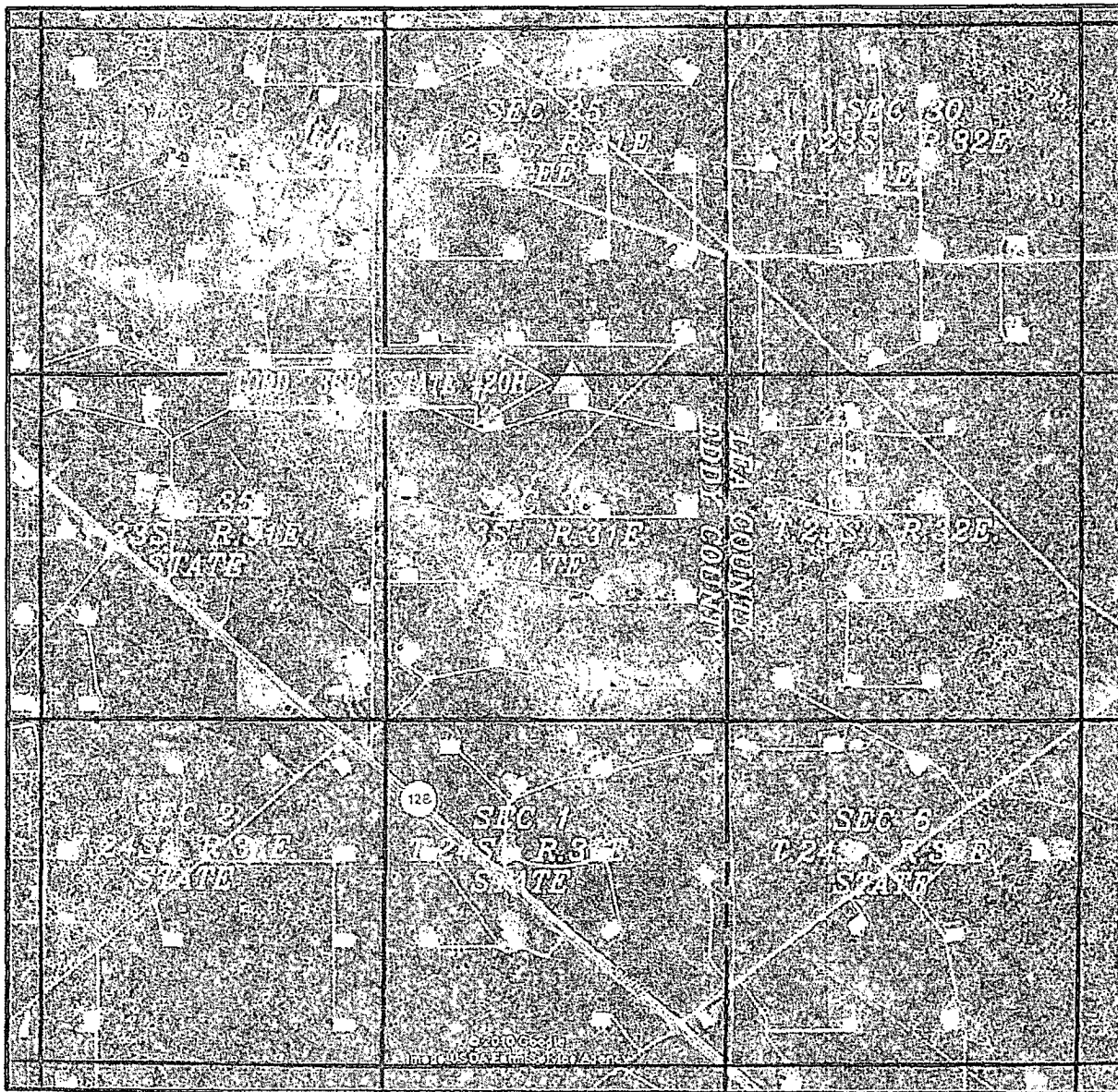
MADRON SURVEYING, INC. 301 SOUTH CANAL, CARLSBAD, NEW MEXICO
(575) 887-5830

301 SOUTH CANAL
(575) 887-5830

SECTION 36, TOWNSHIP 23 SOUTH, RANGE 31 EAST, N.M.P.M.

EDDY COUNTY, STATE OF NEW MEXICO

LAND OWNERSHIP MAP AERIAL PHOTO



NOT TO SCALE
AERIAL PHOTO:
GOOGLE EARTH
USDA - AUG, 2009

DEVON ENERGY PRODUCTION COMPANY, L.P.
TODD "36B" STATE #20H
LOCATED 10 FT. FROM THE NORTH LINE AND
2385 FT. FROM THE EAST LINE OF SECTION
36, TOWNSHIP 23 SOUTH,
RANGE 31 EAST, N.M.P.M.
EDDY COUNTY, STATE OF NEW MEXICO

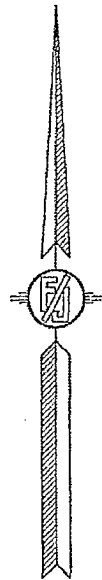
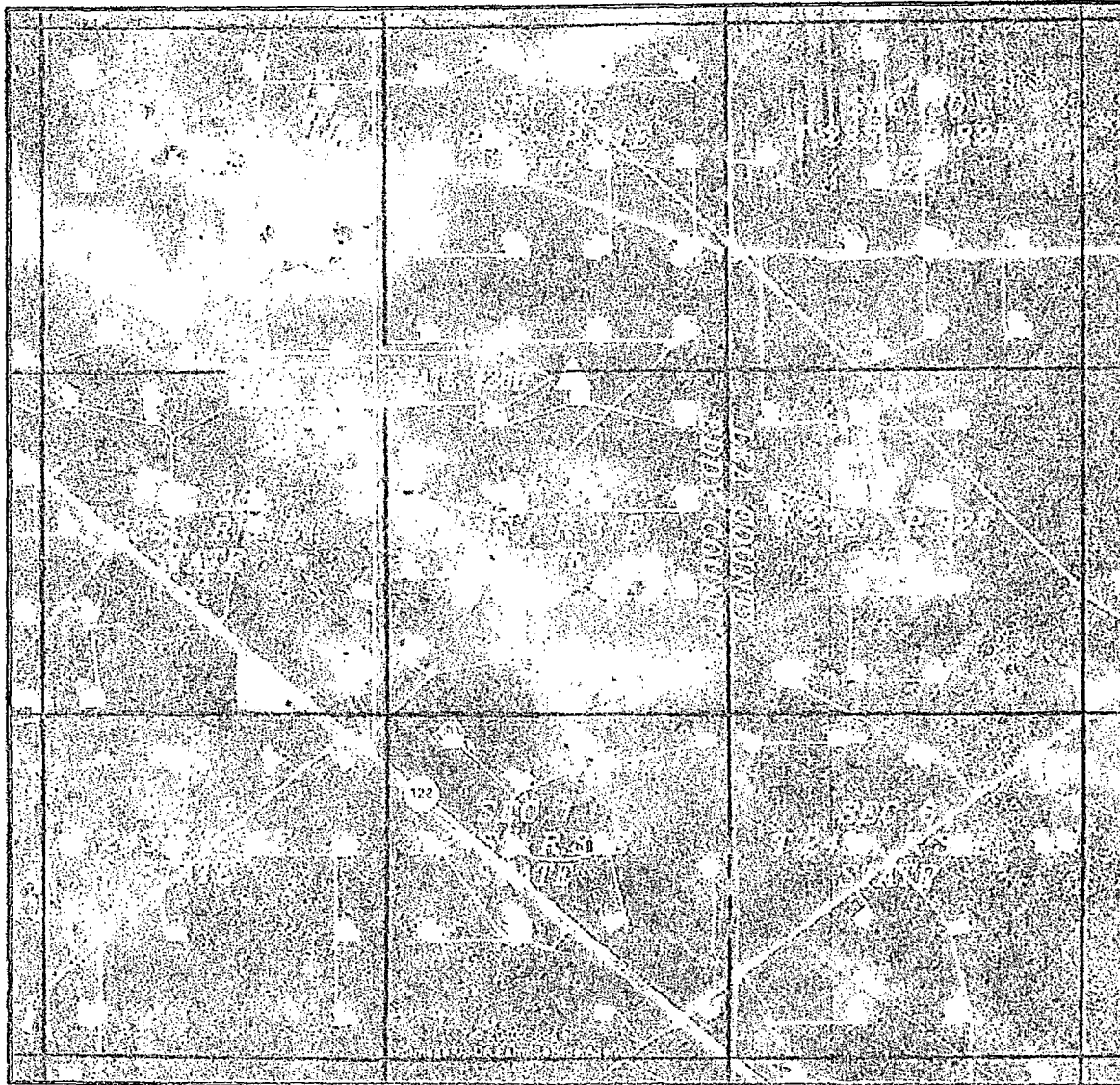
JUNE 14, 2010

SURVEY NO. 128

MADRON SURVEYING, INC. 301 SOUTH CANAL (575) 687-5830 CARLSBAD, NEW MEXICO

SECTION 36, TOWNSHIP 23 SOUTH, RANGE 31 EAST, N.M.P.M.
EDDY COUNTY, STATE OF NEW MEXICO

LAND OWNERSHIP MAP AERIAL PHOTO



NOT TO SCALE
AERIAL PHOTO:
GOOGLE EARTH
USDA - AUG, 2009

DEVON ENERGY PRODUCTION COMPANY, L.P.
TODD "36B" STATE #20H
LOCATED 10 FT FROM THE NORTH LINE AND
2385 FT FROM THE EAST LINE OF SECTION
36, TOWNSHIP 23 SOUTH,
RANGE 31 EAST, N M P M
EDDY COUNTY, STATE OF NEW MEXICO

JUNE 14, 2010

SURVEY NO. 128

MADRON SURVEYING, INC. 301 SOUTH CANAL CARLSBAD, NEW MEXICO
(575) 887-5830