

SEP 7 1982

**GEOLOGICAL SURVEY**

**APPLICATION FOR PERMIT TO DRILL, DEEPEN, OR PLUG BACK**

1a. TYPE OF WORK  
 DRILL  DEEPEN  PLUG BACK

b. TYPE OF WELL  
 OIL WELL  GAS WELL  OTHER   
 SINGLE ZONE  MULTIPLE ZONE

2. NAME OF OPERATOR  
 DEPCO, Inc. ✓

3. ADDRESS OF OPERATOR  
 800 Central, Odessa, TX 79761

4. LOCATION OF WELL (Report location clearly and in accordance with any State requirements.)\*  
 At surface A-660 FN & EL, Section 19, T-5-S, R-25-E  
 At proposed prod. zone

14. DISTANCE IN MILES AND DIRECTION FROM NEAREST TOWN OR POST OFFICE\*  
 43 miles NNE of Roswell, New Mexico

15. DISTANCE FROM PROPOSED\* LOCATION TO NEAREST PROPERTY OR LEASE LINE, FT. (Also to nearest drlg. unit line, if any)

16. NO. OF ACRES IN LEASE

17. NO. OF ACRES ASSIGNED TO THIS WELL  
 160

18. DISTANCE FROM PROPOSED LOCATION\* TO NEAREST WELL, DRILLING, COMPLETED, OR APPLIED FOR, ON THIS LEASE, FT.

19. PROPOSED DEPTH  
 4210

20. ROTARY OR CABLE TOOLS  
 Rotary

21. ELEVATIONS (Show whether DF, RT, GR, etc.)  
 3858 GR

22. APPROX. DATE WORK WILL START\*  
 On approval

23. PROPOSED CASING AND CEMENTING PROGRAM

SIZE OF HOLE	SIZE OF CASING	WEIGHT PER FOOT	SETTING DEPTH	QUANTITY OF CEMENT
14 3/4"	10 3/4"	40.50#	950'	Circl.
7 7/8"	4 1/2"	10.50#	4210'	675 sz. w/DV collar @ 1770'

Mud Program: See letter from Marrs Mud Company  
 BOP Program: See Exhibit "D"  
 Transwestern Pipeline Company will purchase gas.

**RECEIVED**

AUG 13 1982

OIL & GAS  
 MINERALS MGMT. SERVICE  
 ROSWELL, NEW MEXICO

Accord  
 101-115  
 ADV Books  
 9-9-82

IN ABOVE SPACE DESCRIBE PROPOSED PROGRAM: If proposal is to deepen or plug back, give data on present productive zone and proposed new productive zone. If proposal is to drill or deepen directionally, give pertinent data on subsurface locations and measured and true vertical depths. Give blowout preventer program, if any.

24. SIGNED R. L. Denney TITLE Chief Production Clerk DATE 8-12-82

(This space for Federal or State office use) GEORGE H. STAWART

PERMIT NO. \_\_\_\_\_ APPROVAL DATE \_\_\_\_\_

APPROVED BY \_\_\_\_\_ TITLE \_\_\_\_\_ DATE \_\_\_\_\_

CONDITIONS OF APPROVAL, IF ANY JAMES A. OLLMAN DISTRICT SUPERVISOR

\*See Instructions On Reverse Side

All distances must be from the outer boundaries of the 5 m.

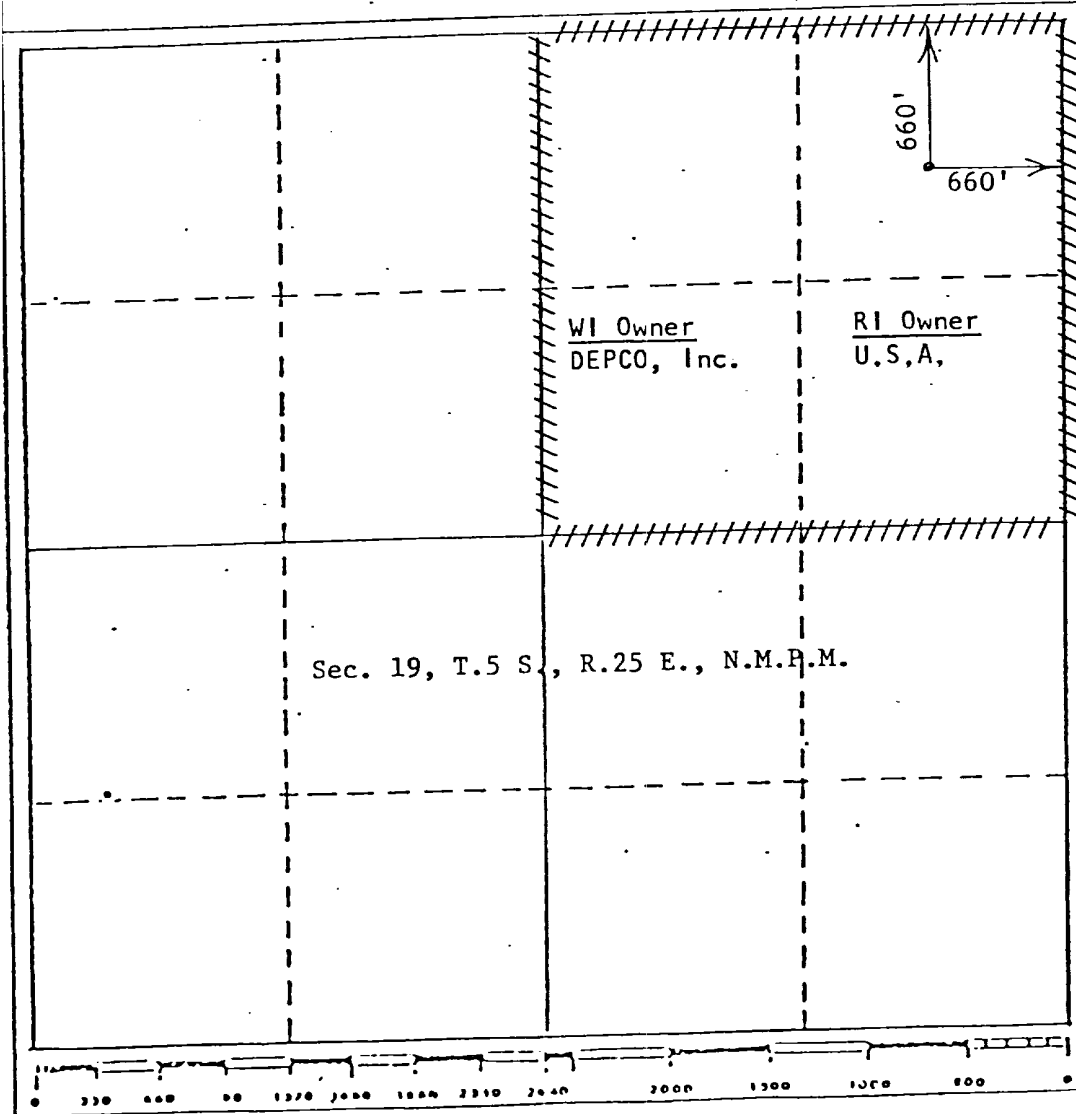
Operator <b>Depco</b>		Lease <b>Rose Federal</b>		Well No. <b>#3</b>
Unit Letter <b>A</b>	Section <b>19</b>	Township <b>5 South</b>	Range <b>25 East</b>	County <b>Chaves</b>
Actual Postage Location of Well: <b>660</b> feet from the <b>North</b> line and <b>660</b> feet from the <b>East</b> line				
Ground Level Elev. <b>3858</b>	Producing Formation <b>Abo</b>	Pool <b>Pecos Slopes Abo</b>	Dedicated Acreage: <b>160</b> Acres	

1. Outline the acreage dedicated to the subject well by colored pencil or hachure marks on the plat below.
2. If more than one lease is dedicated to the well, outline each and identify the ownership thereof (both as to working interest and royalty).
3. If more than one lease of different ownership is dedicated to the well, have the interests of all owners been consolidated by communitization, unitization, force-pooling, etc?

Yes  No If answer is "yes" type of consolidation \_\_\_\_\_

If answer is "no," list the owners and tract descriptions which have actually been consolidated. (Use reverse side of this form if necessary.) \_\_\_\_\_

No allowable will be assigned to the well until all interests have been consolidated (by communitization, unitization, force-pooling, or otherwise) or until a non-standard unit, eliminating such interests, has been approved by the Division.



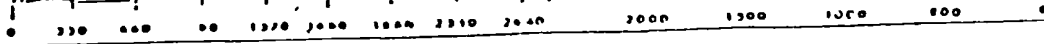
CERTIFICATION

I hereby certify that the information contained herein is true and complete to the best of my knowledge and belief.

*R.L. Denney*  
Name  
R.L. Denney  
Position  
Chief Production Clerk  
Company  
DEPCO, Inc.  
Date  
8-12-82

I hereby certify that the well location shown on this plat was plotted from field notes of actual surveys made by me or under my supervision, and that the same is true and correct to the best of my knowledge and belief.

Date Surveyed **July 30, 1982**  
Registered Professional Engineer and/or Land Surveyor **6290**  
*John D. Jacques*  
John D. Jacques, P.E., L.S.  
Certificate No. **6290**



DEPCO, Inc.  
800 CENTRAL  
ODESSA, TEXAS

APPLICATION FOR DRILLING

DEPCO, INC.  
No. 3 Rose Federal  
CHAVES COUNTY, NEW MEXICO

In conjunction with Form 9-331C, Application for permit to drill, DEPCO, INC. submits the following items of pertinent information in accordance with USGS requirements.

1. The estimated tops of geologic markers are as follows:

San Andres	570'
Glorieta	1570'
Tubb	3040'
Abo	3610'

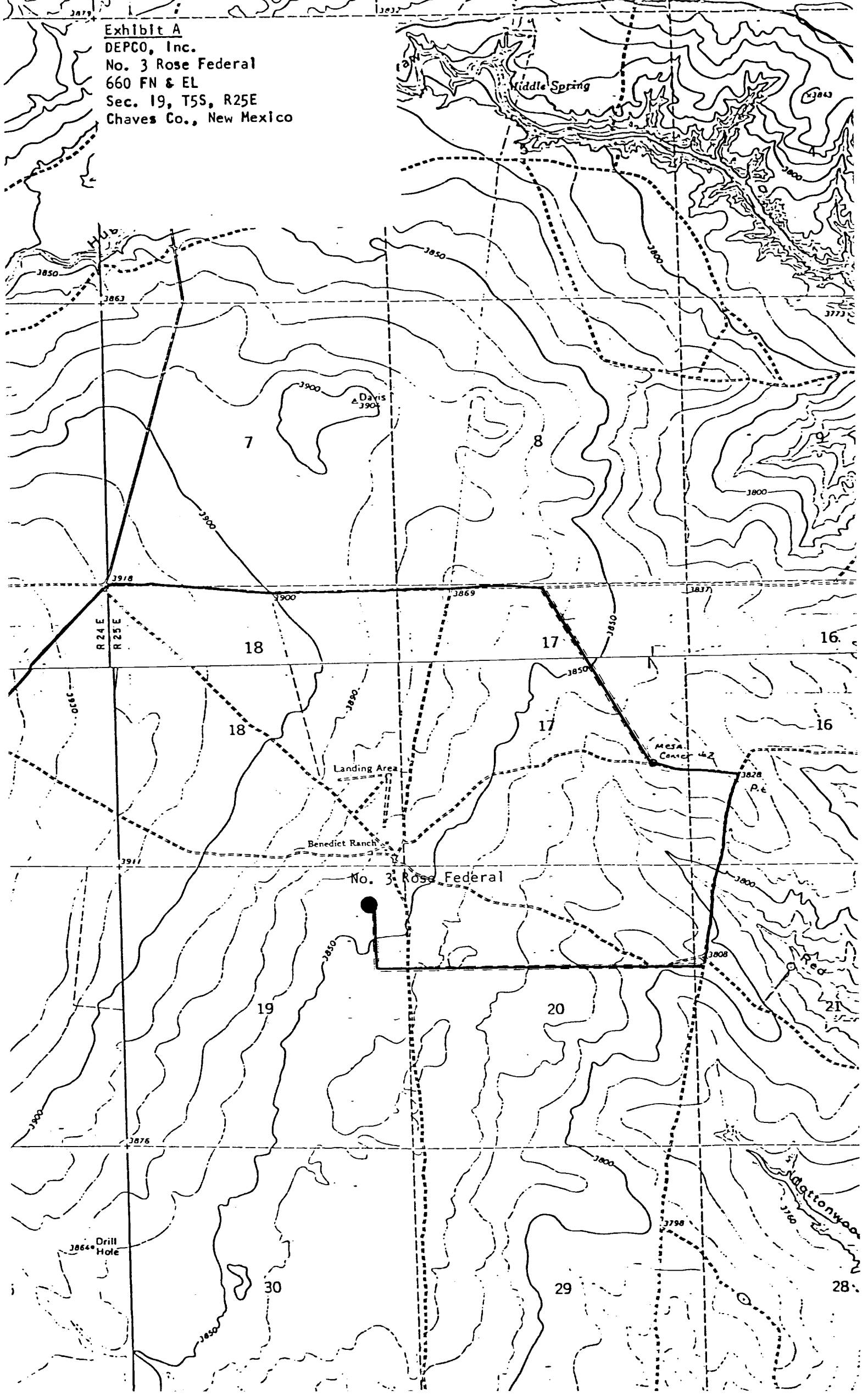
2. The depths at which anticipated water, oil or gas formations are expected to be encountered:

Water:	Approximately 950 feet or less
Gas:	Abo 3610'

3. Proposed casing program: See Form 9-331C.
4. Pressure Control Equipment: See Form 9-331C and Exhibit D.
5. Mud Program: See Form 9-331C and attached letter from Marrs Mud Company.
6. Auxiliary Equipment: Blowout Preventer, Inside Blowout Preventer, Kelley Cock.
7. Testing, Logging and Coring Program:  

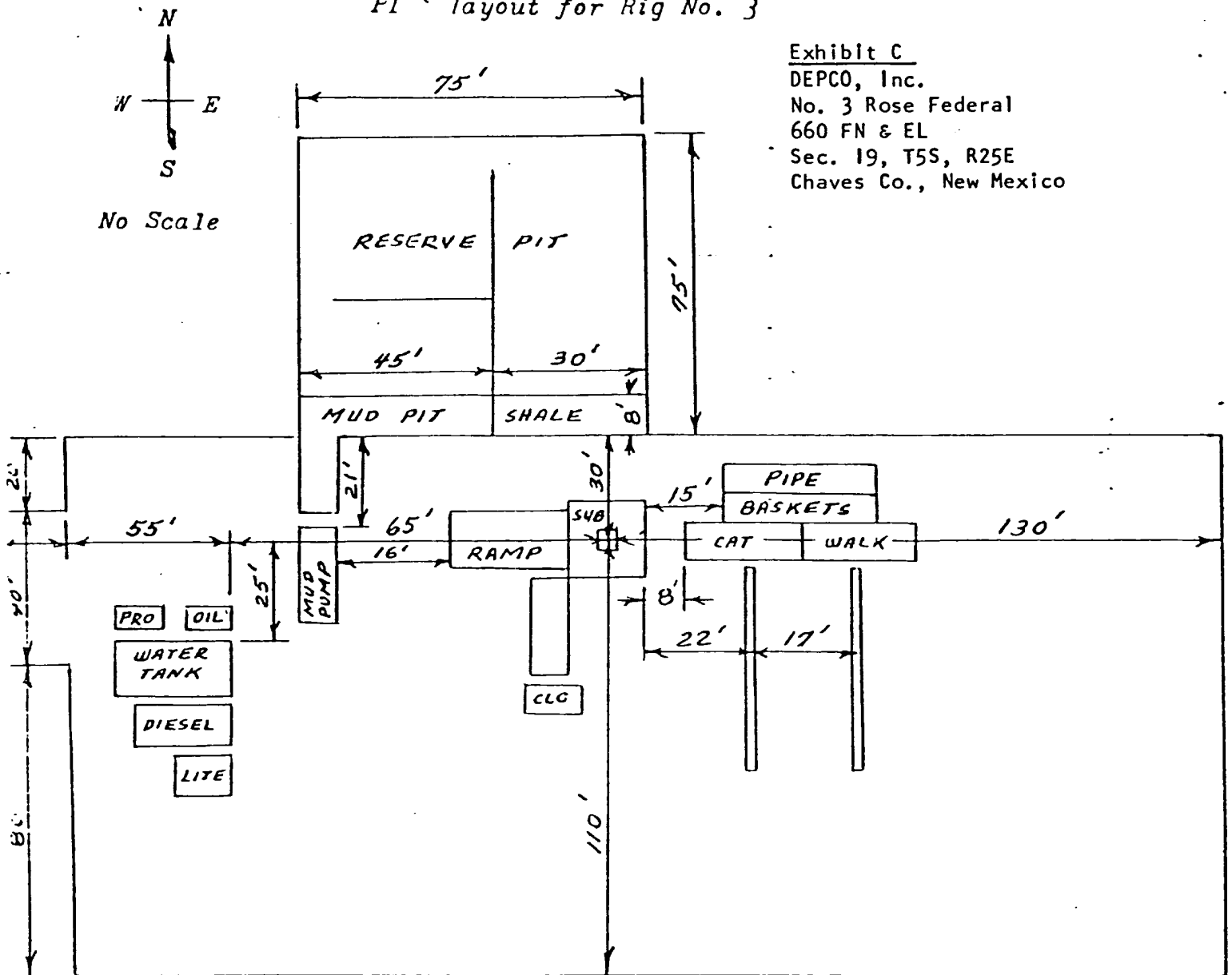
Drill Stem Test:	Abo
	10-foot samples from surface casing to TD
Logging:	Dual Laterolog and Compensated Neutron/Density With Gamma Ray and Caliper
8. No abnormal pressures or temperatures are anticipated.
9. Anticipated starting date: As soon as possible.

Exhibit A  
DEPCO, Inc.  
No. 3 Rose Federal  
660 FN & EL  
Sec. 19, T5S, R25E  
Chaves Co., New Mexico



W.E.K. DRILLING CO., INC.  
 Plan layout for Rig No. 3

Exhibit C  
 DEPCO, Inc.  
 No. 3 Rose Federal  
 660 FN & EL  
 Sec. 19, T5S, R25E  
 Chaves Co., New Mexico



Cellar - 5' x 5' x 5'

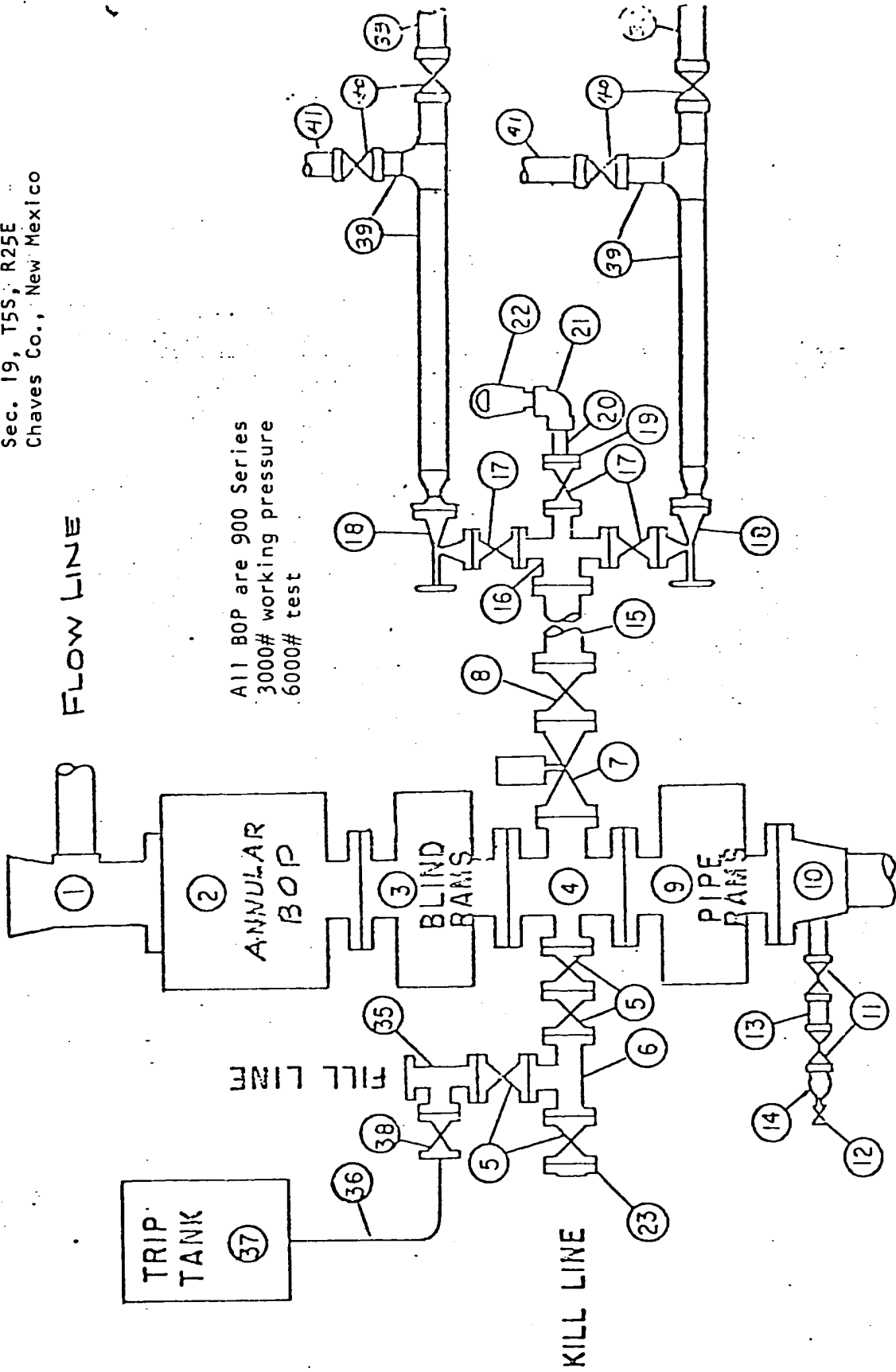
This Rig equipped with Schaffer type "E" 10" series 900 BOP with 4" blind rams, kill line and choke manifold. Koomey hydraulic controls and accumulator with remote controls.

Maintain six (6) foot spacing between oil tank, water tank, diesel tank and light plant.

Twenty (20) foot by Forty(40) foot stinger area at west end of location.

WEK DRILLING CO., INC.  
**BLOWOUT PREVENTER SPECIFICATION**

Exhibit D  
 DEPCO, Inc.  
 No. 3 Roşe Federal  
 660 FN & EL  
 Sec. 19, T5S, R25E  
 Chaves Co., New Mexico



All BOP are 900 Series  
 3000# working pressure  
 6000# test