

dsf
 Tim
 S&B
 Op

DISTRICT I
 1625 N. French Dr., Hobbs, NM 88240

State of New Mexico
 Energy, Minerals and Natural Resources Department

Form C-101
 Revised March 17, 1999
 Instructions on back
 Submit to appropriate District Office
 State Lease - 6 Copies
 Fee Lease - 5 Copies

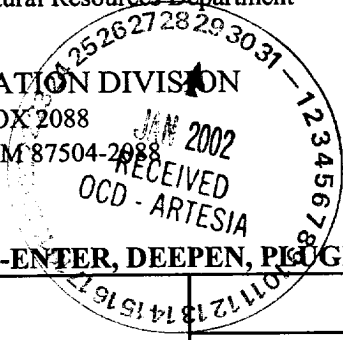
DISTRICT II
 811 South First, Artesia, NM 88210

OIL CONSERVATION DIVISION
 PO BOX 2088

Santa Fe, NM 87504-2088

DISTRICT III
 1000 Rio Brazos Rd., Aztec, NM 87410

DISTRICT IV
 2040 South Pacheco, Santa Re, NM 8750:



AMENDED REPORT

APPLICATION FOR PERMIT TO DRILL, RE-ENTER, DEEPEN, PLUGBACK, OR ADD A ZONE

Operator Name and Address Yates Petroleum Corporation 105 South Fourth Street Artesia, New Mexico 88210		OGRID Number 025575
Property Code 12356		API Number 30- 005-63447
Property Name Harvest "ABR" State		Well No. 4

7 Surface Location

UL or lot no.	Section	Township	Range	Lot Idn	Feet from the	North/South Line	Feet from the	East/West Line	County
P	36	9S	24E		660'	South	660'	East	Chaves

8 Proposed Bottom Hole Location If Different From Surface

UL or lot no.	Section	Township	Range	Lot Idn	Feet from the	North/South Line	Feet from the	East/West Line	County
Proposed Pool 1					Proposed Pool 2				
Pecos Slope; Abo									

Work Type Code N	Well Type Code G	Cable/Rotary Rotary	Lease Type Code S	Ground Level Elevation 3547'
Multiple No	Proposed Depth 4130'	Formation Basement	Contractor Not Determined	Spud Date ASAP

21 Proposed Casing and Cement Program

Hole Size	Casing Size	Casing weight/feet	Setting Depth	Sacks of Cement	Estimated TOC
12 1/4	8 5/8"	24#	900'	525 sx	Surface
7 7/8	4 1/2"	10.5#	4130'	300 sx	**

** Cement to cover all oil, gas and waterbearing zones.

NOTIFY SPUD & TIME TO WITNESS CEMENTING of 8-5/8" CASING

22 Describe the proposed program. If this application is to DEEPEN or PLUG BACK give Describe the blowout prevention program, if any. Use additional sheets if necessary.

Yates Petroleum Corporation proposes to drill and test the Basement and intermediate formations. Approximately 900' of surface casing will be set and cement circulated to shut off gravel and cavings. If commercial, production casing will be run and cemented, will perforate and stimulate as needed for production.

MUD PROGRAM: 0-900' FWGel/Paper/LCM; 900-3360' Brine; 3360-4130' Starch/Salt Gel

BOPE PROGRAM: A 2000# BOPE will be installed on the 8 5/8" casing and tested daily.

I hereby certify that the information given above is true and complete to the best of my knowledge and belief.		OIL CONSERVATION DIVISION	
Signature: Pat Perez	Approved by: ORIGINAL SIGNED BY TIM W. GUM		
Printed name: Pat Perez	Title: DISTRICT II SUPERVISOR		
Title: Regulatory Agent	Approval Date: JAN 30 2002	Expiration Date: JAN 30 2003	
Date: 01/29/02	Phone: (505) 748-1471	Conditions of Approval Attached <input type="checkbox"/>	

DISTRICT I
1005 N. French Dr., Hobbs, NM 88240

Energy, Minerals and Natural Resources Department

Revised March 17, 1990
Instruction on back
Submit to Appropriate District Office
State Lease - 4 Copies
Fee Lease - 3 Copies

DISTRICT II
811 South First, Artesia, NM 86210

DISTRICT III
1000 Rio Brazos Rd., Aztec, NM 87410

DISTRICT IV
2040 South Pacheco, Santa Fe, NM 87505

OIL CONSERVATION DIVISION
P.O. Box 2088
Santa Fe, New Mexico 87504-2088

AMENDED REPORT

WELL LOCATION AND ACREAGE DEDICATION PLAT

API Number	Pool Code	Pool Name Wildcat Basement
Property Code	Property Name HARVEST "ABR" STATE	Well Number 4
OGRID No. 025575	Operator Name YATES PETROLEUM CORPORATION	Elevation 3547

Surface Location

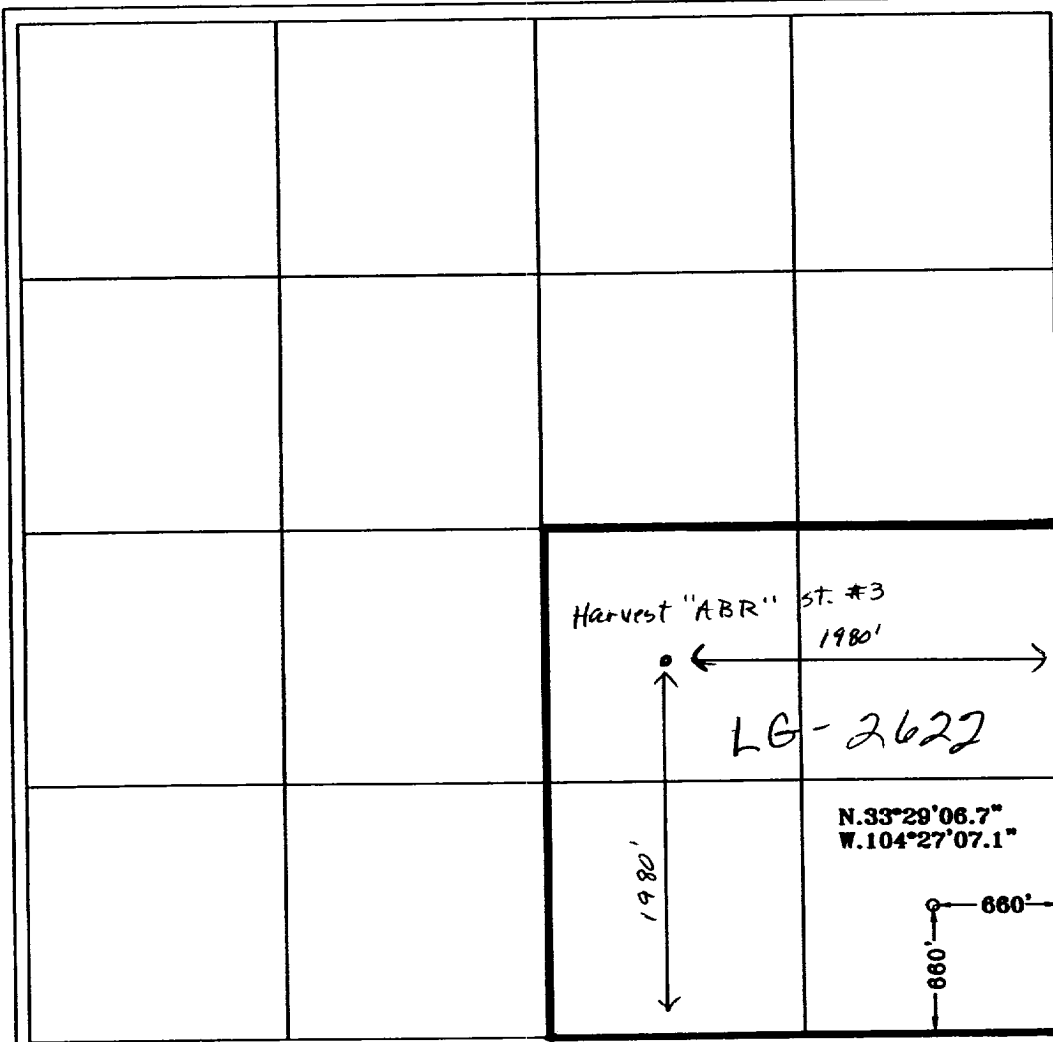
UL or lot No.	Section	Township	Range	Lot Idn	Feet from the	North/South line	Feet from the	East/West line	County
P	36	9S	24E		660	SOUTH	660	EAST	CHAVES

Bottom Hole Location If Different From Surface

UL or lot No.	Section	Township	Range	Lot Idn	Feet from the	North/South line	Feet from the	East/West line	County

Dedicated Acres 160	Joint or Infill	Consolidation Code	Order No.
------------------------	-----------------	--------------------	-----------

NO ALLOWABLE WILL BE ASSIGNED TO THIS COMPLETION UNTIL ALL INTERESTS HAVE BEEN CONSOLIDATED OR A NON-STANDARD UNIT HAS BEEN APPROVED BY THE DIVISION



OPERATOR CERTIFICATION

I hereby certify the the information contained herein is true and complete to the best of my knowledge and belief.

Pat Perez
Signature

Pat Perez
Printed Name

Regulatory Agent
Title

1/29/02
Date

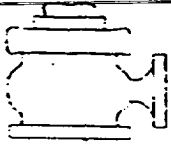
SURVEYOR CERTIFICATION

I hereby certify that the well location shown on this plat was plotted from field notes of actual surveys made by me or under my supervision, and that the same is true and correct to the best of my belief.

1/24/2002

Date Surveyed
Signature of [illegible]
Professional Surveyor

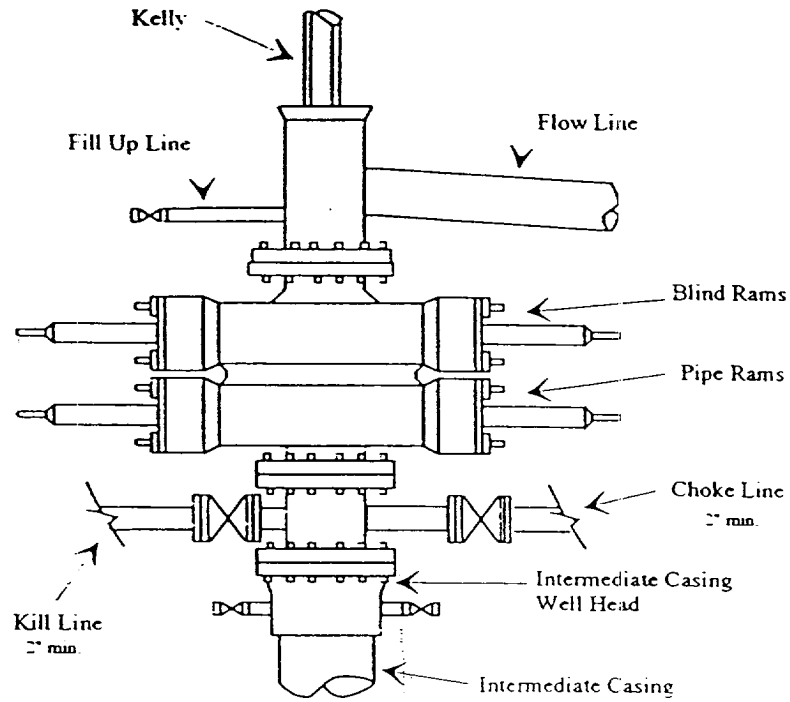
HERSCHEL JONES
NEW MEXICO
REGISTERED PROFESSIONAL SURVEYOR
3640
Certificate No. Herschel Jones RLS 3640
HARVEST
REGISTERED PROFESSIONAL LAND SURVEYOR
GENERAL SURVEYING COMPANY



Yates Petroleum Corporation

BOP-2

Typical 2,000 psi Pressure System Schematic Double Ram Preventer Stack



Typical 2,000 psi choke manifold assembly with at least these minimum features

