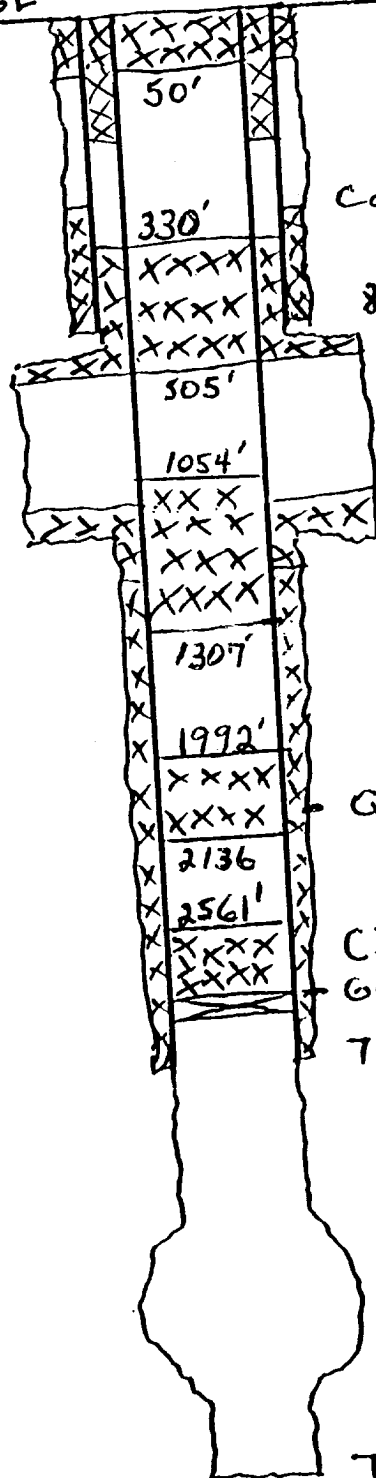




Loco Hills "M" Federal #3 8/24/94

Elev - 3559' GL

After P+A



Calculated cement top at 305'

8 5/8" casing to 455' (cemented with 50sx)

Top of salt section at 455'

Bottom of salt section at 1140'

Queen Formation top at 2086'

CIBP set at 2712'
Grayburg formation top at 2712'
7" casing to 2777' (cemented with 100sx)

Shot hole 2818' to 2862'

TO @ 3174'