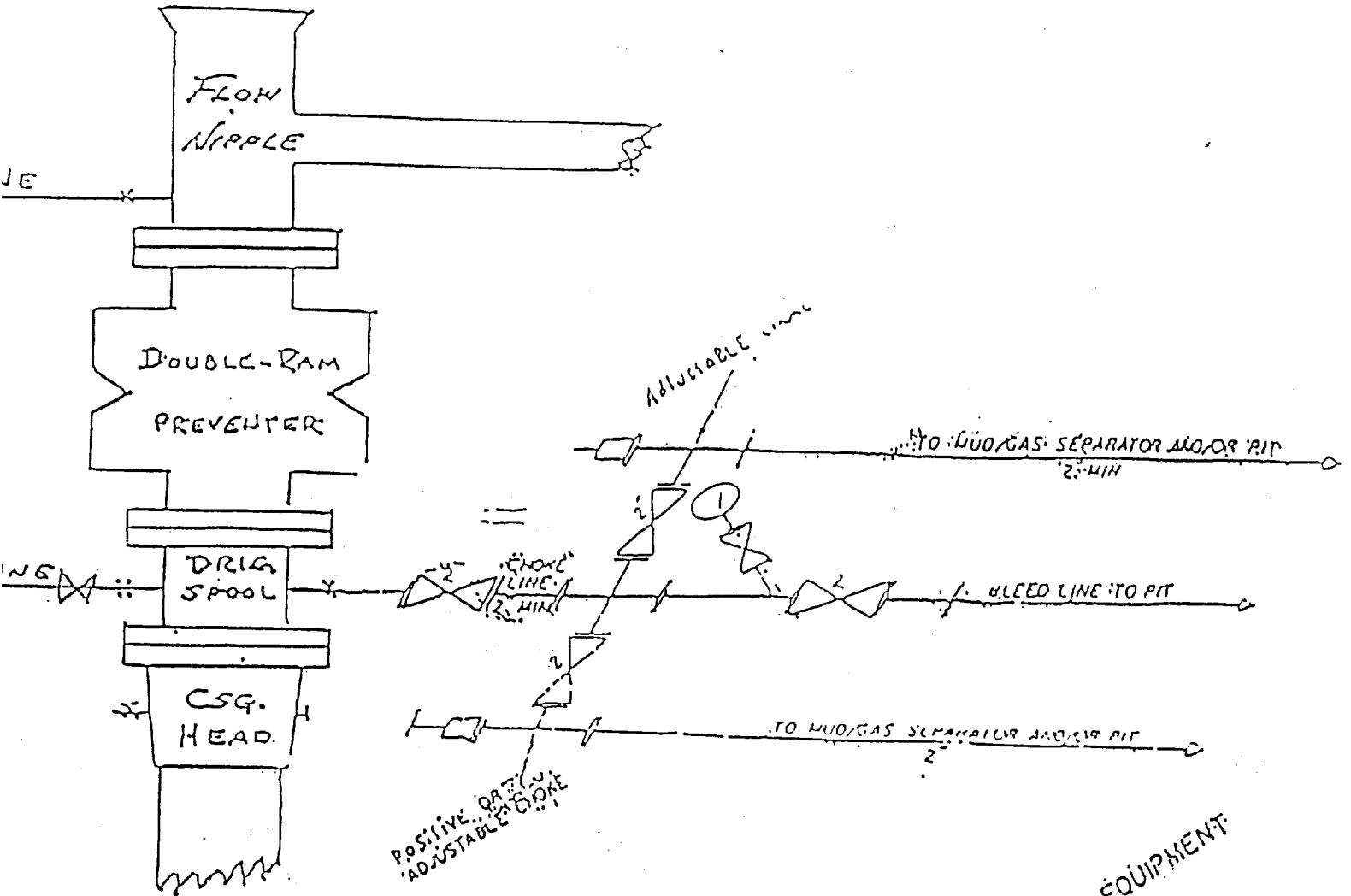


EXHIBIT #1

B O P & CHOKE MANIFOLD

10"/900 Cameron SS Space Saver
3000# Working Pressure
3,000# Working Pressure Choke Manifold



2 1/2" CHOKE MANIFOLD EQUIPMENT

MARBOB ENERGY CORPORATION

Loco Federal No. 3
2310' FNL and 2310' FEL
Section 21, T-17S, R-30E
Eddy County, New Mexico

Exhibit #1