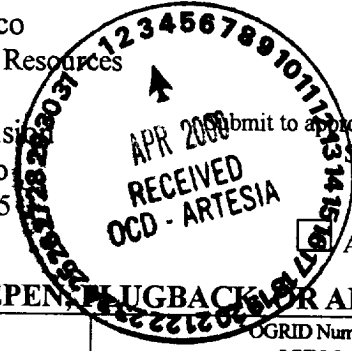


District I
1625 N. French Dr., Hobbs, NM 88240
District II
811 South First, Artesia, NM 88210
District III
1000 Rio Brazos Road, Aztec, NM 87410
District IV
2040 South Pacheco, Santa Fe, NM 87505

State of New Mexico
Energy Minerals and Natural Resources

Oil Conservation Division
2040 South Pacheco
Santa Fe, NM 87505

Form C-101
Revised March 17, 1999



Submit to appropriate District Office
State Lease - 6 Copies
Fee Lease - 5 Copies

AMENDED REPORT

APPLICATION FOR PERMIT TO DRILL, RE-ENTER, DEEPEN, PLUG BACK OR ADD A ZONE

¹ Operator Name and Address Clayton Williams Energy, Inc. Six Desta Drive, Suite 3000 Midland, TX 79705		² UGRID Number 25706
³ Property Code 25235		⁴ API Number 30 - 015-30919
⁵ Property Name STATE "20B"		⁶ Well No. 2

⁷ Surface Location

UL or lot no.	Section	Township	Range	Lot Idn	Feet from the	North/South line	Feet from the	East/West line	County
H	20	17 S	29 E		2285	north	330	east	Eddy

⁸ Proposed Bottom Hole Location If Different From Surface

UL or lot no.	Section	Township	Range	Lot Idn	Feet from the	North/South line	Feet from the	East/West line	County
⁹ Proposed Pool 1 Grayburg Jackson -7R's,QN,GB,SA (28509)					¹⁰ Proposed Pool 2				

¹¹ Work Type Code P	¹² Well Type Code O	¹³ Cable/Rotary R	¹⁴ Lease Type Code S	¹⁵ Ground Level Elevation 3602'
¹⁶ Multiple N	¹⁷ Proposed Depth 3790'	¹⁸ Formation Grayburg	¹⁹ Contractor Unknown	²⁰ Spud Date Upon approval

²¹ Proposed Casing and Cement Program

Hole Size	Casing Size	Casing weight/foot	Setting Depth	Sacks of Cement	Estimated TOC

²² Describe the proposed program. If this application is to DEEPEN or PLUG BACK, give the data on the present productive zone and proposed new productive zone. Describe the blowout prevention program, if any. Use additional sheets if necessary.

It is proposed to set a Retrievable Bridge Plug @ ±3790' and Temporarily Abandon the Yeso formation (existing perfs @ 3805'-4194', 35 holes).

Perforate and stimulate Grayburg-San Andres formation: Lower San Andres 3513' - 3768' (OA), 21 holes, and Upper San Andres 2263.5' - 3129' (OA), 33 holes, and Grayburg 2230' - 2269' (OA), 6 holes.

²³ I hereby certify that the information given above is true and complete to the best of my knowledge and belief.		OIL CONSERVATION DIVISION	
Signature: <i>Betsy Luna</i>		Approved by: <i>[Signature]</i> BGA	
Printed name: Betsy Luna		Title: <i>[Signature]</i>	
Title: Regulatory Analyst		Approval Date: 4-6-00	Expiration Date: 4-6-01
Date: 3/29/2000	Phone: (915) 682-6324	Conditions of Approval:	
		Attached <input type="checkbox"/>	

DISTRICT I
P.O. Box 1980, Hobbs, NM 88241-1980

State of New Mexico
Energy, Minerals and Natural Resources Department

Form C-102
Revised February 10, 1984
Submit to Appropriate District Office
State Lease - 4 Copies
Fee Lease - 3 Copies

DISTRICT II
P.O. Drawer DD, Artesia, NM 88211-0719

DISTRICT III
1000 Rio Brazos Rd., Aztec, NM 87410

OIL CONSERVATION DIVISION

P.O. Box 2088
Santa Fe, New Mexico 87504-2088

DISTRICT IV
P.O. BOX 2086, SANTA FE, N.M. 87504-2086

AMENDED REPORT

WELL LOCATION AND ACREAGE DEDICATION PLAT

API Number 30 - 015 - 30919	Pool Code 28509	Pool Name Grayburg Jackson-7R's, Qn,GB, SA
Property Code 25235	Property Name STATE '20B'	Well Number 2
OGRID No. 25706	Operator Name CLAYTON WILLIAMS ENERGY, INC.	Elevation 3602

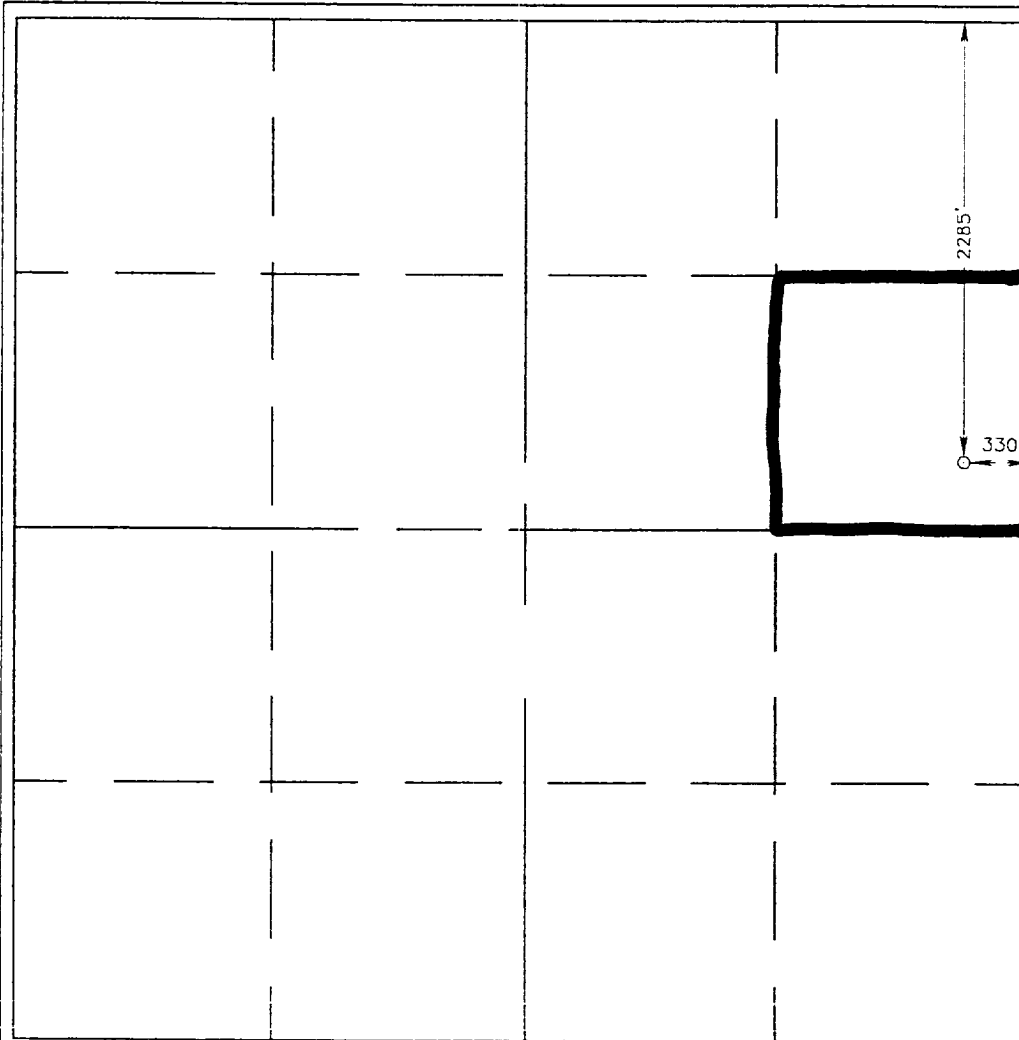
Surface Location

UL or lot No.	Section	Township	Range	Lot Idn	Feet from the	North/South line	Feet from the	East/West line	County
H	20	17 S	29 E		2285	NORTH	330	EAST	EDDY

Bottom Hole Location If Different From Surface

UL or lot No.	Section	Township	Range	Lot Idn	Feet from the	North/South line	Feet from the	East/West line	County
Dedicated Acres 40	Joint or Infill	Consolidation Code	Order No.						

NO ALLOWABLE WILL BE ASSIGNED TO THIS COMPLETION UNTIL ALL INTERESTS HAVE BEEN CONSOLIDATED OR A NON-STANDARD UNIT HAS BEEN APPROVED BY THE DIVISION



OPERATOR CERTIFICATION

I hereby certify the the information contained herein is true and complete to the best of my knowledge and belief.

Betsy Luna
Signature

Betsy Luna
Printed Name

Engr. Tech.
Title

3-29-00
Date

SURVEYOR CERTIFICATION

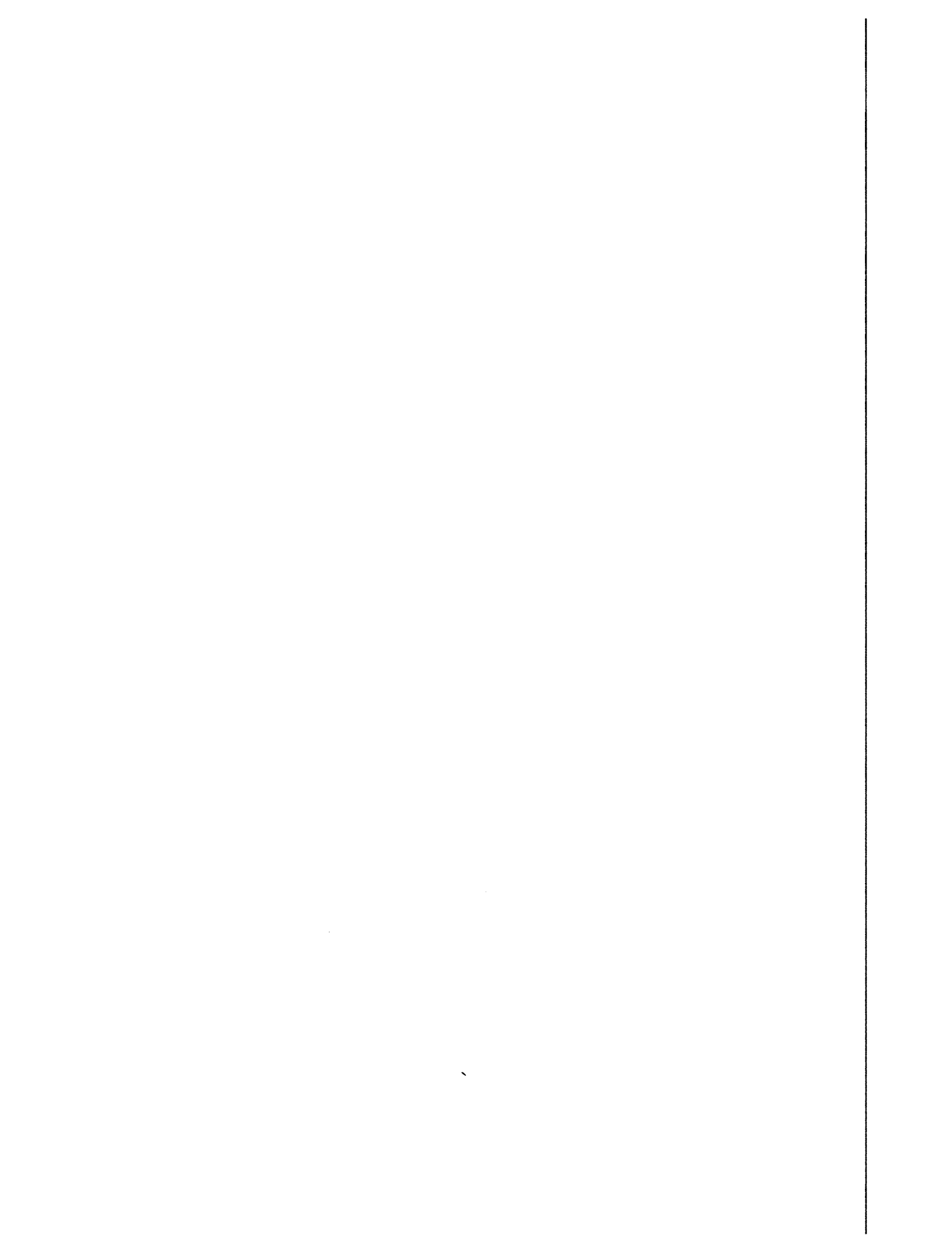
I hereby certify that the well location shown on this plat was plotted from field notes of actual surveys made by me or under my supervision, and that the same is true and correct to the best of my belief.

JANUARY 5th 2000
Date Surveyed

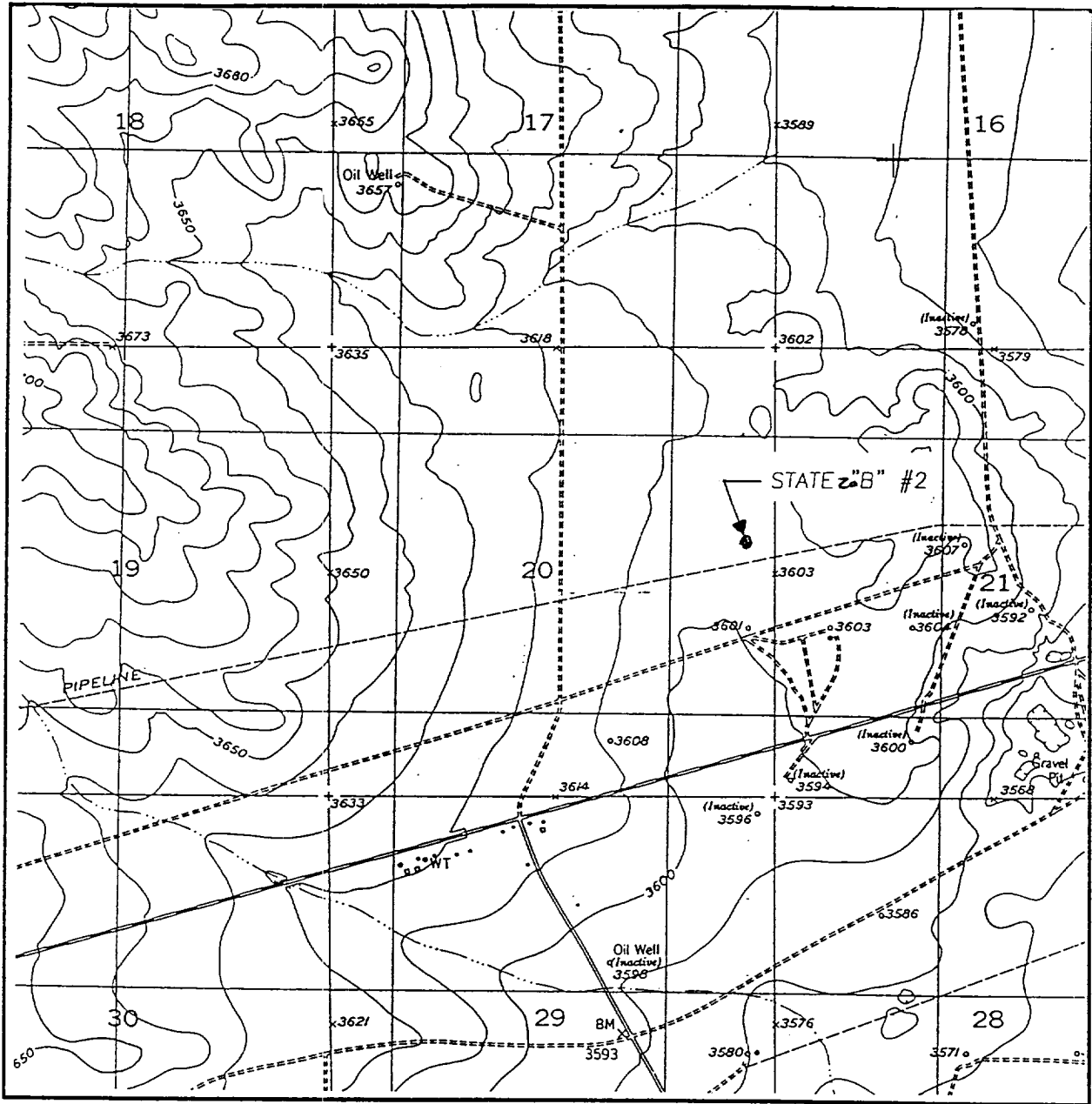
Signature & Seal of Professional Surveyor
Ronald J. Eidsen
01/05/2000

00-11-0006

Certificate No. RONALD J. EIDSON 3239
GARY EIDSON 12641
MACON McDONALD 12185



LOCATION VERIFICATION MAP



SCALE: 1" = 2000'

CONTOUR INTERVAL:
RED LAKE SE - 10'

SEC. 20 TWP. 17-S RGE. 29-E

SURVEY N.M.P.M.

COUNTY EDDY

DESCRIPTION 2285' FNL & 330' FEL

ELEVATION 3602

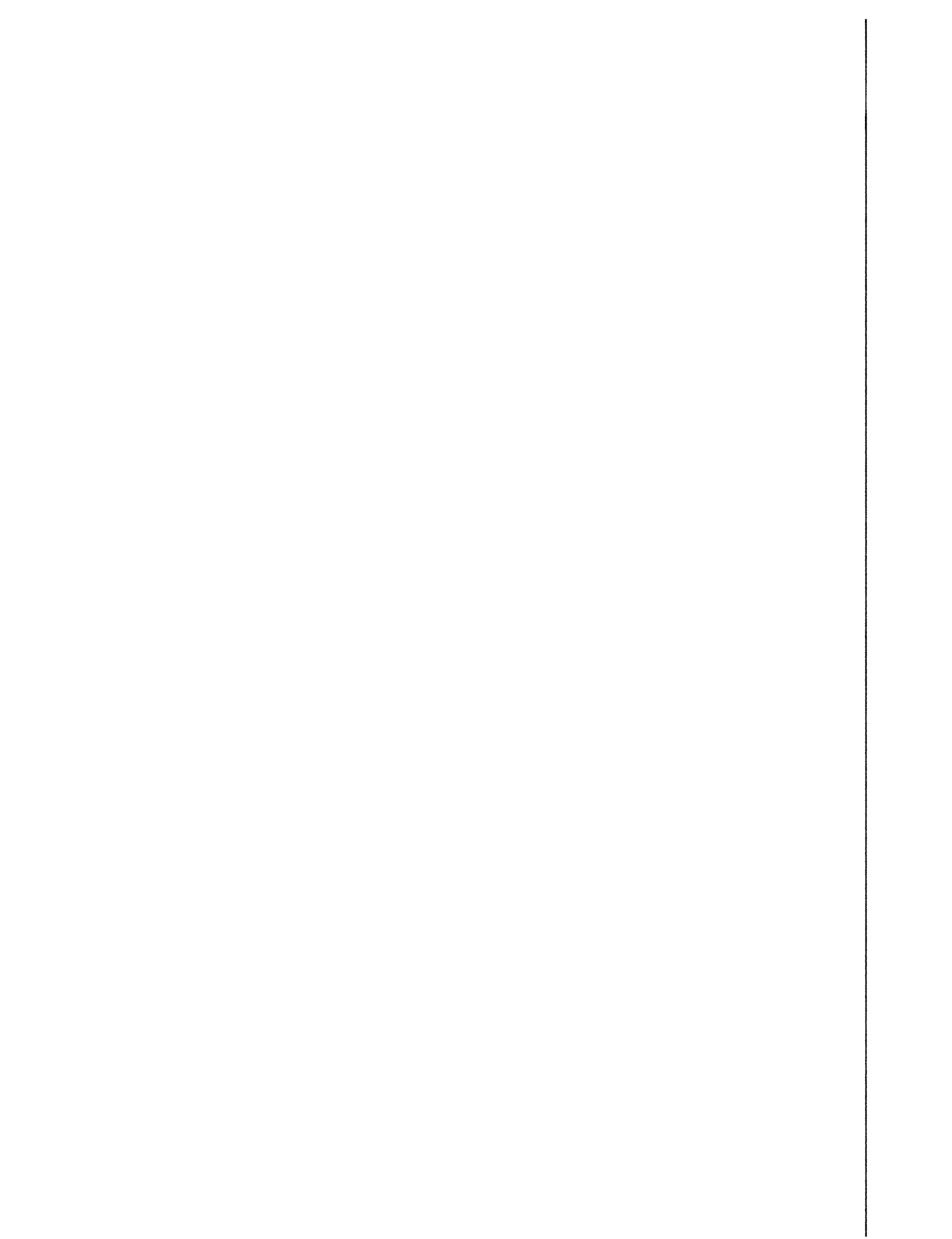
OPERATOR CLAYTON WILLIAMS ENERGY, INC.

LEASE STATE Z'B"

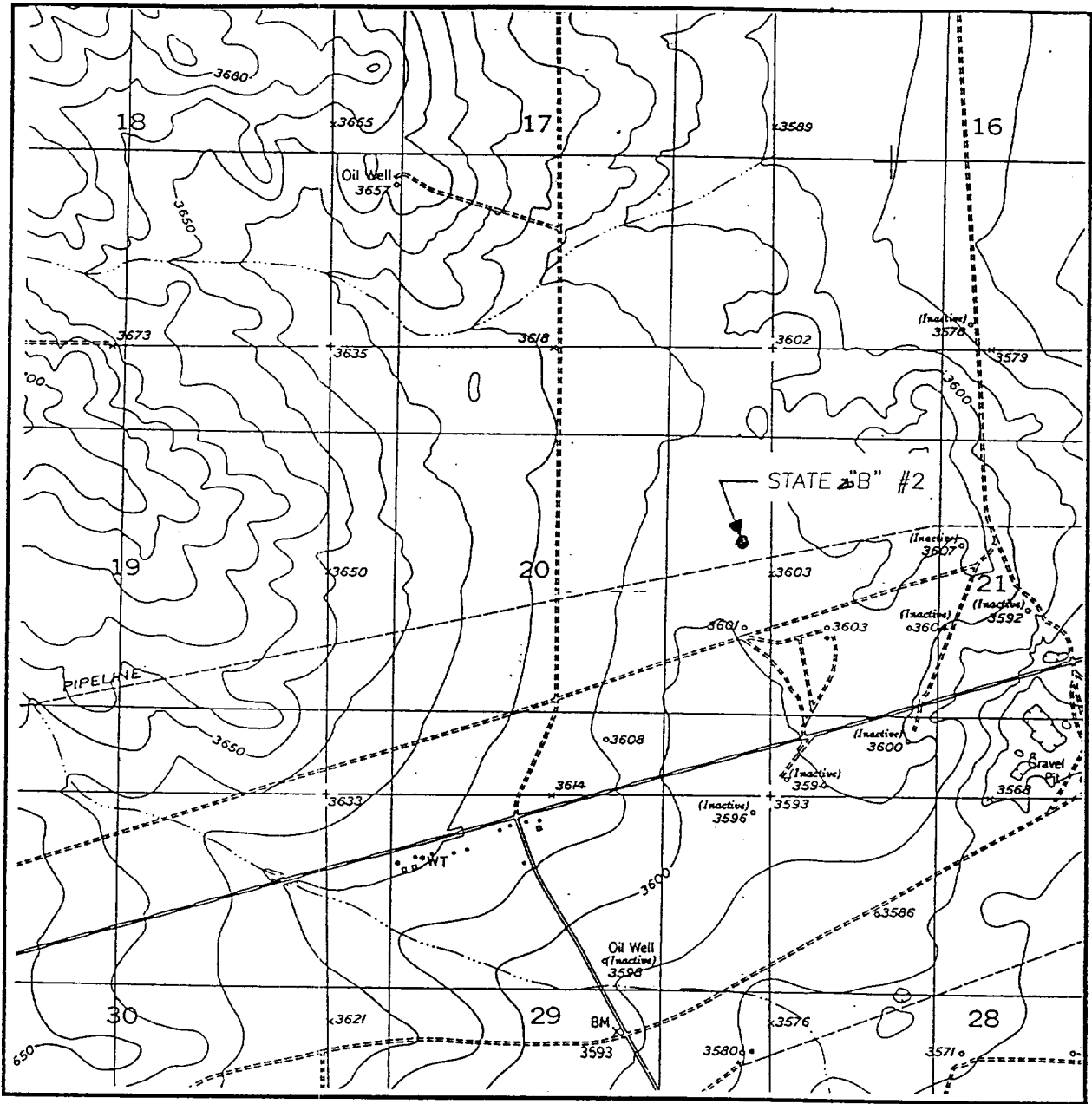
U.S.G.S. TOPOGRAPHIC MAP

RED LAKE SE, N.M.

JOHN WEST SURVEYING
HOBBS, NEW MEXICO
(505 393-3117)



LOCATION VERIFICATION MAP



SCALE: 1" = 2000'

CONTOUR INTERVAL:
RED LAKE SE - 10'

SEC. 20 TWP. 17-S RGE. 29-E

SURVEY _____ N.M.P.M.

COUNTY _____ EDDY

DESCRIPTION 2285' FNL & 330' FEL

ELEVATION _____ 3602

OPERATOR _____ CLAYTON WILLIAMS
ENERGY, INC.

LEASE _____ STATE 20B

U.S.G.S. TOPOGRAPHIC MAP

RED LAKE SE, N.M.

JOHN WEST SURVEYING
HOBBS, NEW MEXICO
(505 393-3117)

