

NEW MEXICO OIL CONSERVATION COMMISSION  
 WELL LOCATION AND ACREAGE DEDICATION PLAT

Form C-152  
 Supersedes C-128  
 Effective 1-1-65

RECEIVED

AMENDED

All distances must be from the OUTER boundaries of the Section.

MAY 16 1991

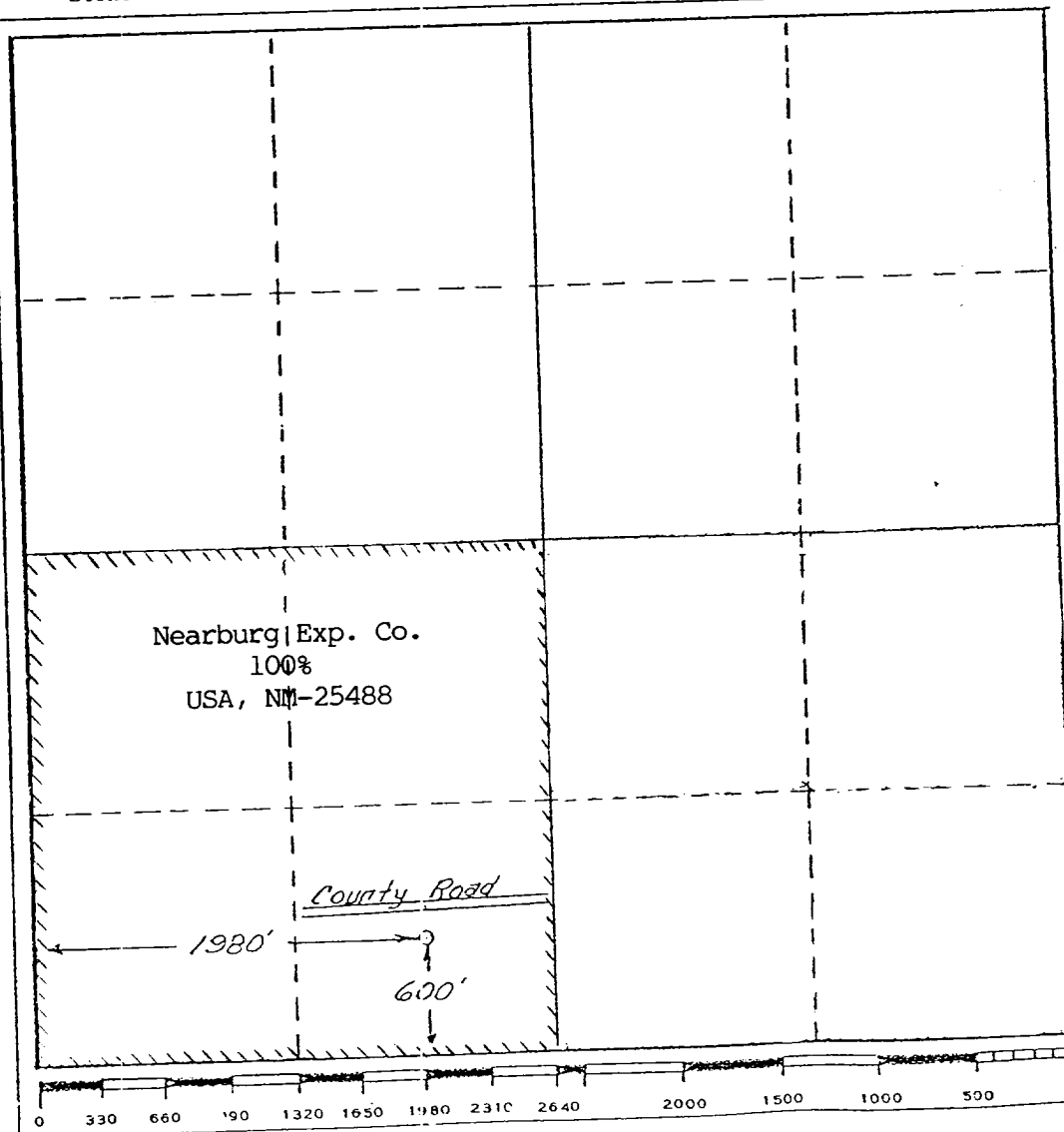
Operator Nearburg Producing Company		Lease FOSTER 31 FEDERAL		O. C. D. ARTESIA, OFFICE	
Unit Letter	Section 31	Township 19S	Range 25E	County Eddy	
Actual Footage Location of Well: 1980 feet from the West line and 600 feet from the South line					
Ground Level Elev. 3561	Producing Formation Cisco-Canyon	Pool Dagger Draw, Upper Pennsylvanian North		Dedicated Acreage: 160.00 Acres	

- Outline the acreage dedicated to the subject well by colored pencil or hachure marks on the plat below.
- If more than one lease is dedicated to the well, outline each and identify the ownership thereof (both as to working interest and royalty).
- If more than one lease of different ownership is dedicated to the well, have the interests of all owners been consolidated by communitization, unitization, force-pooling, etc?

Yes  No If answer is "yes," type of consolidation N/A

If answer is "no," list the owners and tract descriptions which have actually been consolidated. (Use reverse side of this form if necessary.)

No allowable will be assigned to the well until all interests have been consolidated (by communitization, unitization, forced-pooling, or otherwise) or until a non-standard unit, eliminating such interests, has been approved by the Commission.



CERTIFICATION

I hereby certify that the information contained herein is true and complete to the best of my knowledge and belief.

*Kathie Craft*

Kathie Craft

Position  
Land Administrator

Company  
Nearburg Producing Co.

Date  
May 13, 1991

I hereby certify that the well location shown on this plat was plotted from field notes of actual surveys made by me or under my supervision, and that the same is true and correct to the best of my knowledge and belief.

May 24, 1976

Date Surveyed  
Richard B. Duniven  
Registered Professional Engineer  
and/or Land Surveyor

*Richard B. Duniven*

Certificate No.

4832