

RECEIVED

NEW MEXICO OIL CONSERVATION COMMISSION  
WELL LOCATION AND ACREAGE DEDICATION PLAT

Form C-102  
Supersedes C-128  
Effective 1-1-65

MAR 7 1980

All distances must be from the outer boundaries of the Section.

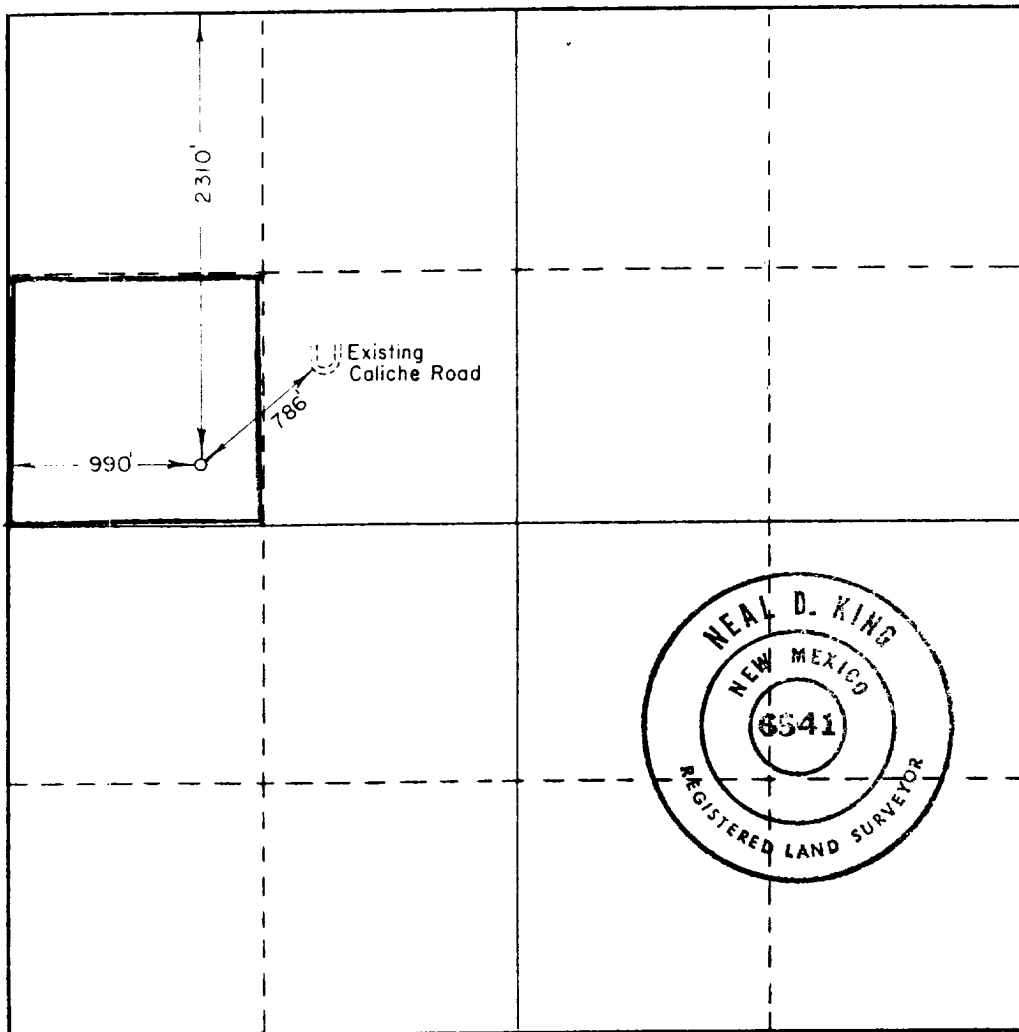
Operator <i>B. M. Keohane &amp; Westall</i>		Lease State B		O. C. D. ARTESIA, OFFICE 3		Well No. 3	
Unit Letter E	Section 2	Township 19S	Range 31E	County Eddy County			
Actual Footage Location of Well: 990 feet from the West line and 2310 feet from the North line							
Ground Level Elev. 3620.4	Producing Formation <i>Gates, Dawn, River Shugart</i>			Pool	Dedicated Acreage: 40 Acres		

1. Outline the acreage dedicated to the subject well by colored pencil or hachure marks on the plat below.
2. If more than one lease is dedicated to the well, outline each and identify the ownership thereof (both as to working interest and royalty).
3. If more than one lease of different ownership is dedicated to the well, have the interests of all owners been consolidated by communitization, unitization, force-pooling, etc?

Yes  No If answer is "yes," type of consolidation \_\_\_\_\_

If answer is "no," list the owners and tract descriptions which have actually been consolidated. (Use reverse side of this form if necessary.) \_\_\_\_\_

No allowable will be assigned to the well until all interests have been consolidated (by communitization, unitization, forced-pooling, or otherwise) or until a non-standard unit, eliminating such interests, has been approved by the Commission.



CERTIFICATION

I hereby certify that the information contained herein is true and complete to the best of my knowledge and belief.

*Garland R. Westall*  
Name

*Co-owner*  
Position

*Keohane & Westall*  
Company

Date  
*3-12-80*

I hereby certify that the well location shown on this plat was plotted from field notes of actual surveys made by me or under my supervision, and that the same is true and correct to the best of my knowledge and belief.

Date Surveyed  
January 19, 1980

Registered Professional Engineer and/or Land Surveyor

*Neal D. King* R.L.S.

Certificate No. 6541

50-015-23200

04/11/1944

1333

1000

2602110-0

2602120-0

2602130-0

2602140-0

U-010-23200

ORPIO 18862

PR50 16351

POO1 56439

2602110-0

2602130-6

2602150-W

2602180  
General Pay. Machine  
recovered from & evaluation  
2250-4/82