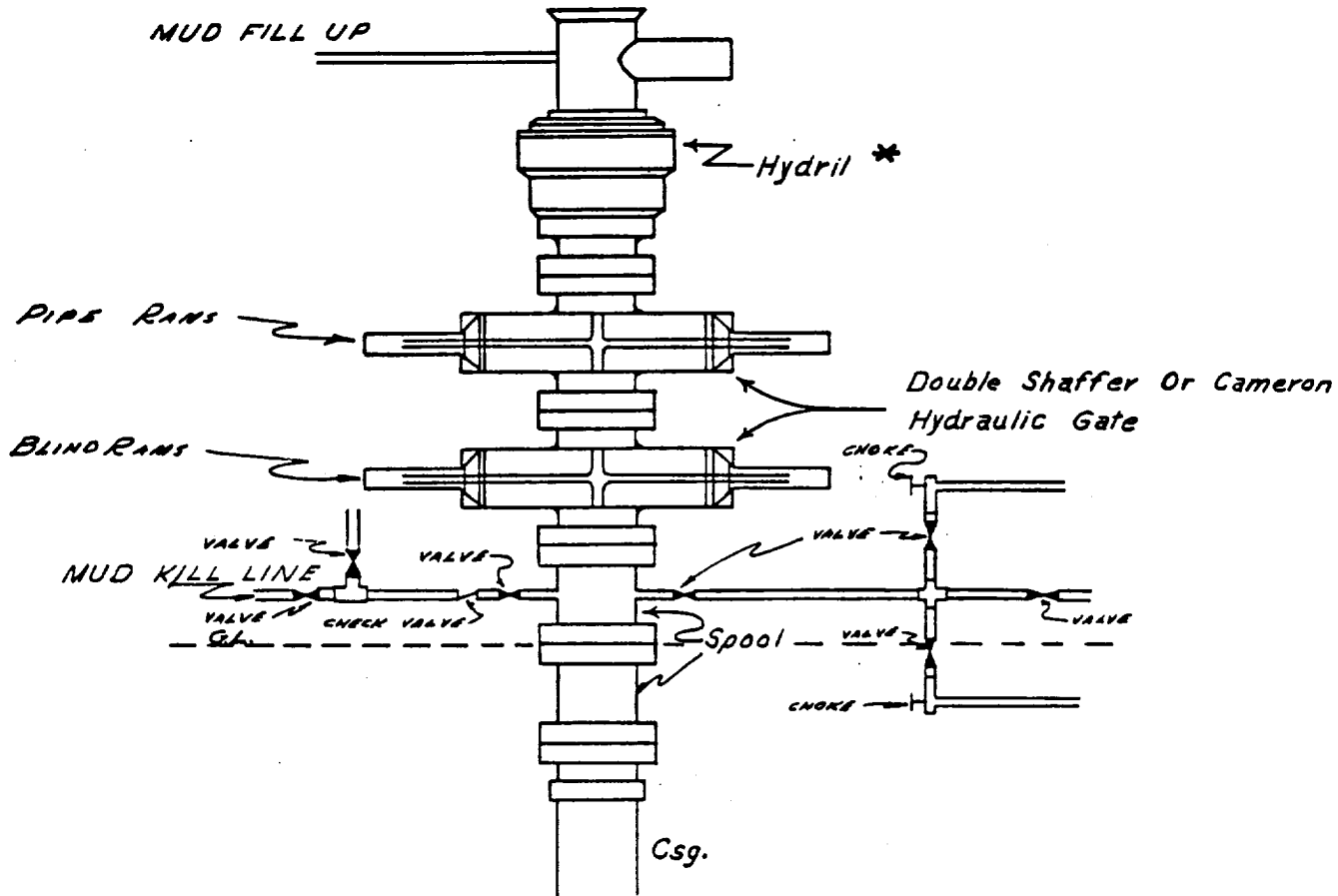


CONOCO INC.

Blow-out Preventer Specifications



NOTE:

Manual and Hydraulic controls with closing unit no less than 75' from well head.  
Remote controls on rig floor.

\*

DUE TO SUBSTRUCTURE CLEARANCE, HYDRIL  
MAY OR MAY NOT BE USED.

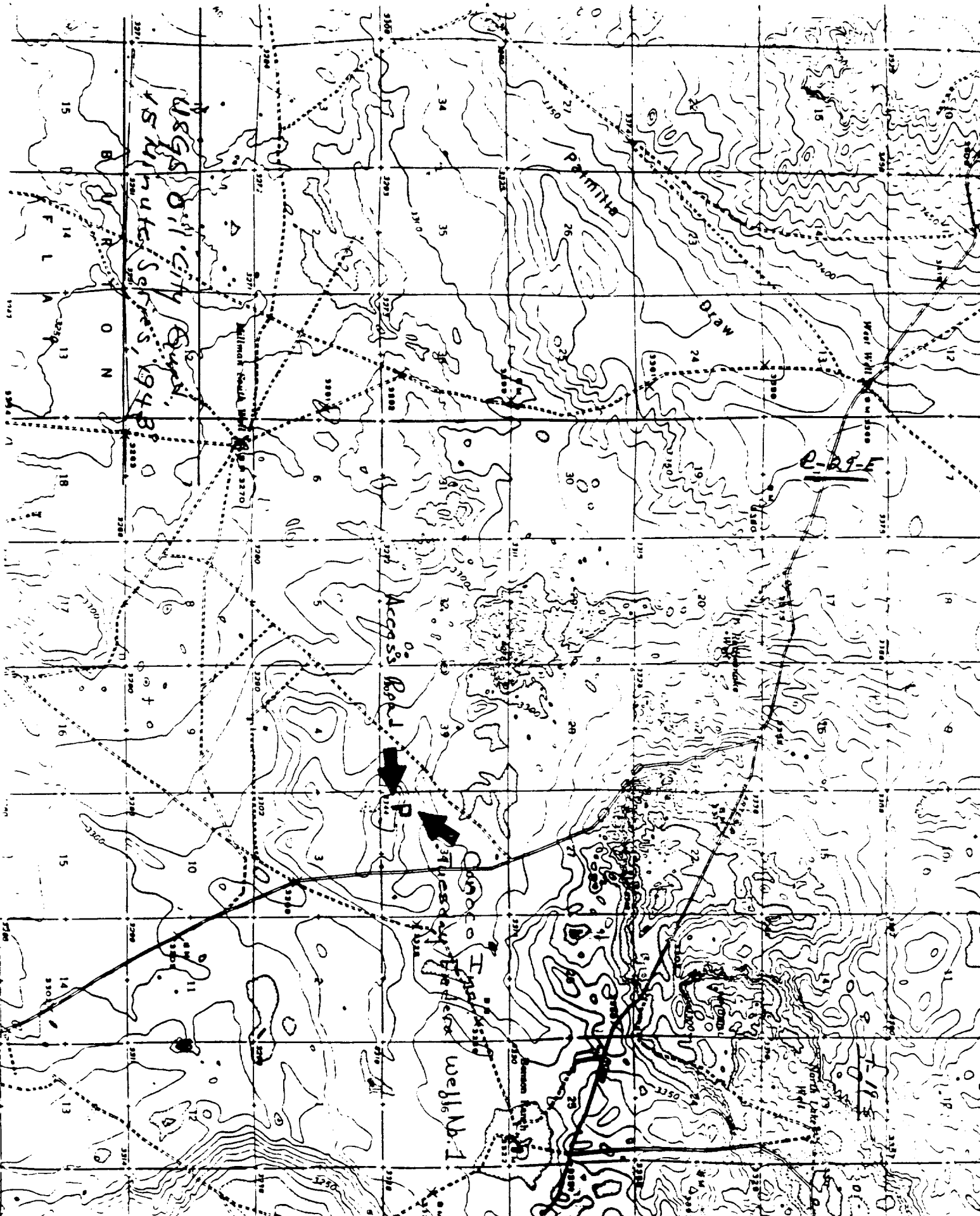
ATTACHMENT TO FORM 9-331 C  
APPLICATION FOR PERMIT TO DRILL

Conoco Inc.  
Tuesday Federal No. 2  
NM-24160

1. The estimated tops of important geologic markers are as follows:

<u>Zone</u>	<u>Top</u>	<u>Content</u>
Surface Water	0-330'	Water
Rustler Anhy.	337'	---
Salado Salt	437'	---
Tansill	987'	---
Yates	1249'	Oil
Seven Rivers	1535'	Oil

2. The estimated depths at which water, oil or gas will be encountered are shown above in No. 1.
3. A drawing of an API series 900 Blowout Preventer Specification is attached. Pipe rams and blinds will be checked to 1000 psi for 30 minutes when BOP is installed. BOP will be checked when casing string is set and operated daily for checks.
4. The proposed casing program is as follows:
- 0'-~~140~~': 13-3/8", 48#, H-40, ST&C  
0'-400': ~~8~~5-5/8", ~~34~~#, H-40, ST&C  
0'-1750': 5-1/2", 15.5#, J-55, ST&C
5. The proposed mud program is as follows:
- 0'-400': 8.3-8.5 Fresh water  
0'-1750': 9.0 Salt gel/Air
6. The proposed logging program is as follows:
- 0'-TD: GR-CAL  
700'-TD: DLL-MSFL  
700'-TD: CNL-FDC
7. Possible drilling problems that may be encountered are (1) gravel beds from 0'-100' (2) lost circulation throughout the drilling of the well.
8. The anticipated starting date is July 1, 1985, with a duration of approximately 4 days.



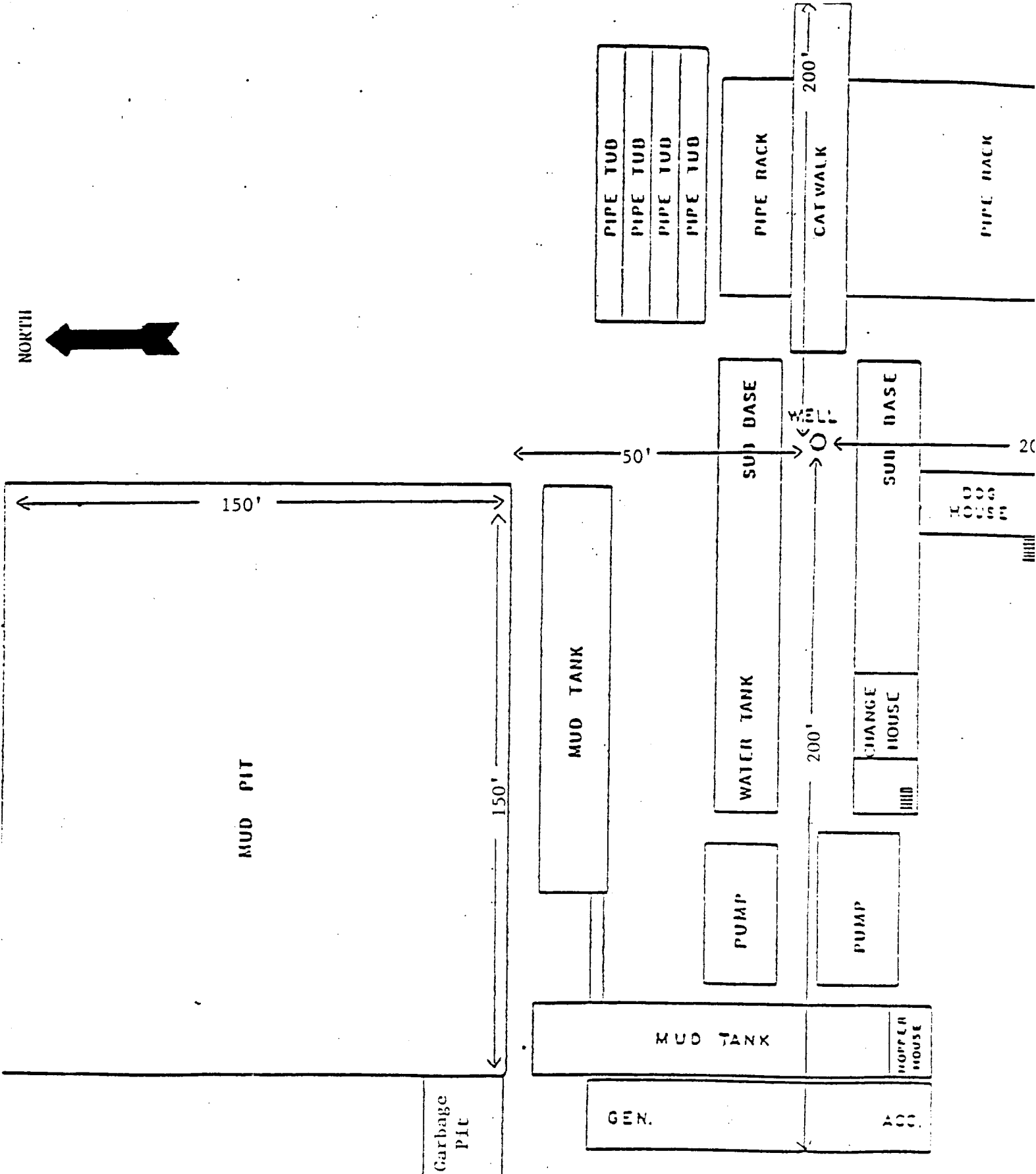
USGS 8 1/2 City Range  
15 minutes squares, 1948

Access Road

Well No. 1

P-29-E

T-19-S



CONOCO INC.  
PRODUCTION DEPARTMENT